



# Reduce Your Wildfire Risk

Hubbell Wildfire Risk Mitigation Solutions



# Discover wildfire mitigation solutions to fit your strategy

## Benefit from Hubbell's history of innovation and quality

Challenges posed by wildfires have increased in recent years. Don't just meet the challenges but overcome them by partnering with the solutions provider that gives you a strategic advantage.

Wildfires are caused by several factors, including public negligence, vegetation, and equipment failure. Wildlife incidents can also cause fires. And a drier future sets the stage for even more.

Hubbell innovation delivers proactive solutions. Mitigate your risk with CAL FIRE approved connectors, wildlife guards, switches and reclosers that feature solid dielectrics, and more.

We also improve your situation awareness, allowing you to deal with issues before they become problems. Our grid monitoring solutions and sensors help you create effective maintenance programs as well as respond faster to events.

Harness the power of insight and control. Reducing your risk ultimately saves you time and expense. More than just products, we help you protect, manage, and extend your network.

## Key benefits that reduce wildfire risk



CalFire approved products



Fool-proof/fail-proof



Solid dielectrics



Field-proven reliability

## HPS Fire Mitigation



### Sure-fit Automation Splices

Sure-fit automation splices are fool proof and fail proof. They prevent partial insertion to enhance reliable performance. These ANSI C119.4 Class A connectors offer the fastest method of splicing aluminum, aluminum alloy, and ACSR conductors.

- Color coded funnel guides for easy identification
- Funnel guides deploy after full insertion
- Factory inhibitor protected



### Distribution Post Insulators

The weathersheds on our reliable distribution line post insulators are molded with low-flammability silicone rubber. The enhanced strength and durability of Hubbell's proprietary compound allows insulators to withstand damaging effects of the environment and prolongs insulator service life. This material results from countless hours in the lab and over 40 years of successful field experience.





# CAL FIRE Approved Connectors

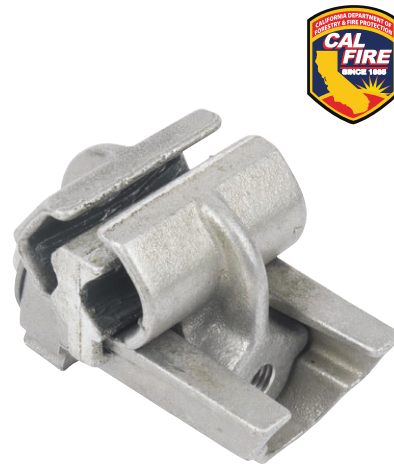
## GA9000 Connectors

Our vise-type, single bolt connectors are recommended for aluminum, or aluminum to copper distribution service or tap connections. The shear bolt makes proper torque simple. The head breaks off to provide positive indication of a correctly completed connection to the installer.

CAL FIRE Rated to ensure safety and approved at multiple utilities throughout the West. Optional snap-on cover also eliminates animal contact danger.

- Range taking
- Both shear bolt and standard bolt designs are approved
- Class AA temperature rated per ANSI C119.4

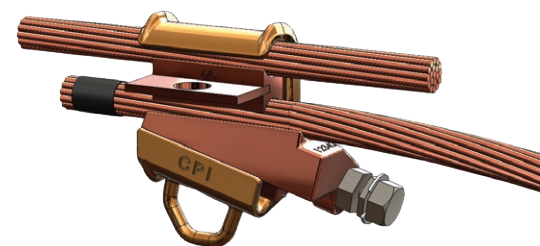
Call your Hubbell Territory Manager for more information and product support.



## CPI Connectors

Our aluminum wedge tap connectors combine a spring C body design with a shear bolt. The spring body flexes to maintain constant pressure as thermal cycling causes conductors to expand and contract. Installs faster than conventional crimp-type or molded joints and is easily adaptable to standard hot stick tools. Excellent option for emergency restoration.

- Low resistance
- Durable, remains locked through power surges
- Safe and easy installation without special tooling
- Easy to remove and reuse without damaging conductors





## Wildlife Mitigation

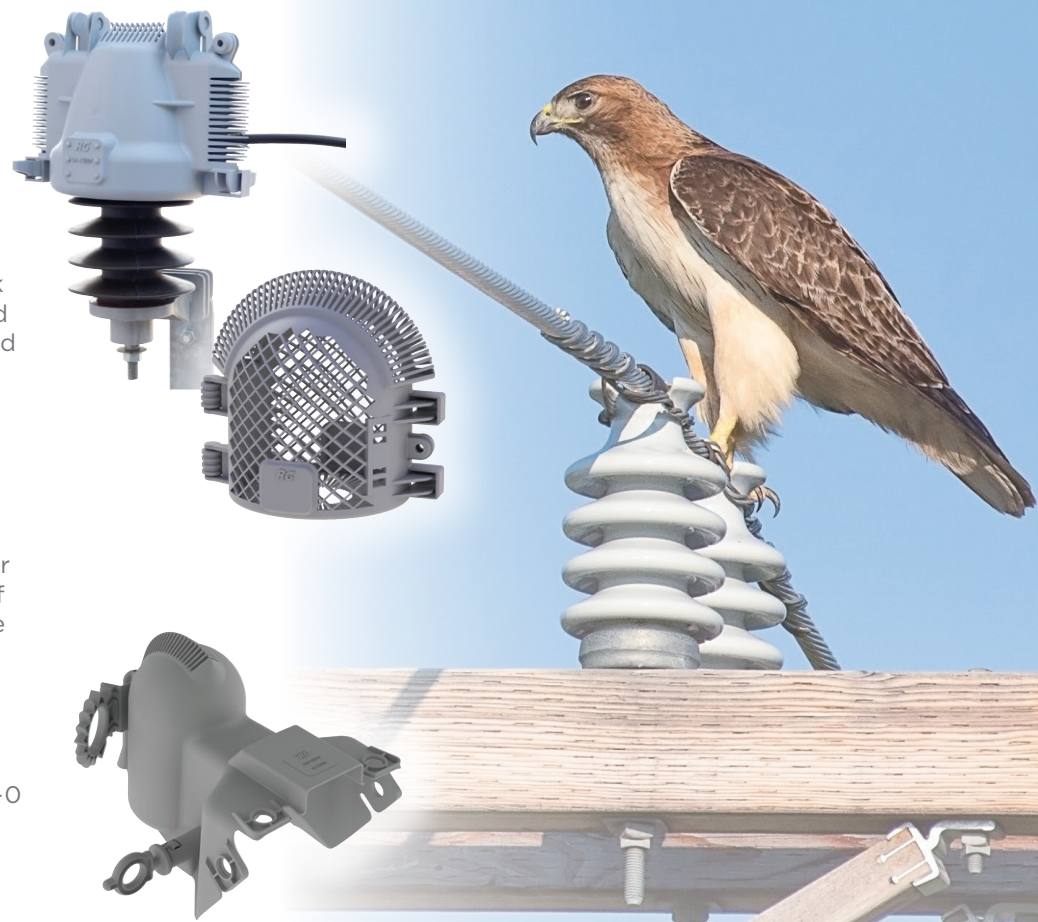
### Reliaguard® Wildlife Guards

Reduce power outages and wildfire ignitions caused by wildlife contact with energized risk points. Our wildlife guards, made of V-0 rated flame retardant materials, prevent contact and electrical arcs to avoid ignition and damage.

### Powerfuse HS Cutout Guards

Cutout guards provide wildlife and wildfire protection in one product. They offer superior coverage for energized components at risk of bird and animal contact by fully enclosing the bolted connection.

They install easily, adapt for a better fit and provide superior retention. Install them even on energized porcelain or polymer cutouts. Exclusive Reliatanium™ material achieves a V-0 flammability rating.



## Fire Protection Coating

### Preserve the Integrity of Poles

Passive fire protection solutions shield your infrastructure. Our latex-based fire protection coating (FPC) preserves the structure of your wooden poles, preventing further damage and costly power outages. Formulated with additional solids to achieve effective coverage with less material, it allows poles to breathe.

- Intumescent coating protects from fire
- Exceeds ASTM E119 fire test standards
- Prevents trapped moisture
- Non-toxic, no VOC, with long-lasting flat finish





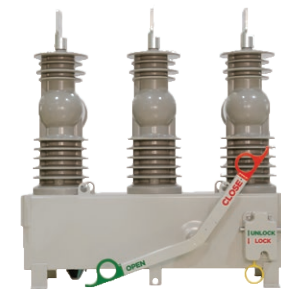
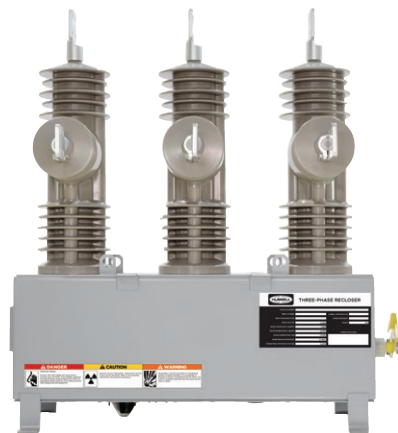


## Solid Dielectric Advantage

Our recloser, switch, and sectionalizer designs strategically reduce threats to the environment. They utilize HCEP solid dielectric insulation to deliver improved safety and better performance. These site-ready products simplify installation, offer long maintenance-free life, and minimize downtime.

### Liberty 3-Phase Recloser

- Adaptive reclosing
- Downed conductor detection via Beckwith M-7679
- SCADA capabilities allow remote operation and provide crucial status visibility
- Integrated capacitor with PWM closing technology enables fast operation for red flag days
- Highly accurate telemetry via Integrated voltage and current sensing on all three phases



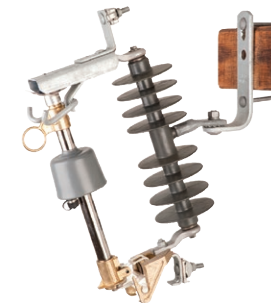
### Liberty 3-Phase Load Break Switch

- Dead tank design
- No exposed energized parts, eliminating wildlife contact
- Advanced switching schemes allow remote operation via SCADA
- Integrated sensing offers system awareness during a wildfire event
- Program as a sectionalizer or switch to extend overcurrent protection down the feeder
- Quickly and remotely implement Public Safety Power ShutOffs during a wildfire event



### Versa-Tech Single Phase Recloser

- HLT functionality allows for fast operations on Red Flag Days
- Up to 54 curves introduce flexibility to system coordination
- SCADA-capable for remote visibility and operation
- Sequence coordination with lock-out feature prevents unnecessary tripping and reduces wildfire ignition risk from faulty downstream reclosers



### Programmable Resettable Sectionalizers

- Only operates in deadline conditions
- Programmable to fit coordination schemes
- No expulsive components to ignite fires
- Reset ability reduces total cost of ownership
- No TCC curves, eliminating coordination concerns with upstream reclosers

# Grid Monitoring

## Sensors and Analytics

Monitor lines continuously for abnormal events that may cause a variety of problems. The Aclara Grid Monitoring solution detects patterns of transients that are often precursors of more severe issues. When the sensor system detects recurring events, you can dispatch inspectors to investigate.

Gain situational awareness of dangerous conditions and resolve problems before a fire starts.

- Alert crews to line disturbances which may indicate potential fire risks
- Identify vegetation or obstructions that could cause sparks, leading to fires

Grid monitoring solution features:

- Predictive grid analytics improve data accuracy and effectiveness
- Sensor Management System classifies events and visualizes actionable intelligence, allowing you to respond to real-time conditions
- Back-office systems integrate quickly via an intuitive DNP3 interface
- Critical measurements and event waveforms from line sensors are captured, time stamped, and communicated as they happen



## ExactaGuard Sensor Solution for Poles and Conductors

Obtain rapid notification of difficult to detect hazardous events. Downed wires and poles, pole collisions, and pole fire conditions are common causes of wildfires attributed to utility infrastructure. Every minute counts in finding and responding to potential problems.

Under the best conditions, it takes an estimated 47 minutes or more for incident reporting. ExactaGuard Sensors provide the exact location of an event in 2:30 minutes or less.

Our Conductor Sensor includes a 3-axis accelerometer and fault detection sensor. When a line down conduction occurs, the Sensor immediately sends an alert.

The Pole Sensor includes an integrated temperature sensor to immediately alert utilities to fire conditions for either:

- Rapid temperature rise
- Exceeding max temperature

Use the Aclara communications network and AclaraONE® software to respond immediately, monitor pole health, and maintain your infrastructure.



## Contact Us

Our quality, innovative, cost-effective products, software, and services help you plan for a safer future. Make Hubbell solutions part of your overall wildfire risk mitigation strategy.

### Aclara

77 West Port Plaza Drive, Suite 500  
St. Louis, MO 63146-3126  
Phone: 800.297.2728 | Email: [AclaraInfo@hubbell.com](mailto:AclaraInfo@hubbell.com)

### Reliaguard

27151 Burbank Street  
Foothill Ranch, CA 92610  
Office: 949.305.3311 | Email: [reliaguardsales@hubbell.com](mailto:reliaguardsales@hubbell.com)

### Hubbell Power Systems

210 N. Allen  
Centralia, MO 65240 USA  
Phone: (573) 682-5521 | Fax: (573) 682-8475 | Email: [hpscscs@hubbell.com](mailto:hpscscs@hubbell.com)



©2022 Hubbell Incorporated. All rights reserved.  
Hubbell and the Hubbell logo are registered trademarks or trademarks of Hubbell Incorporated.  
All other trademarks are the property of their respective owners. Printed in U.S.A.  
AIK\_WM\_BR\_EN\_00059

