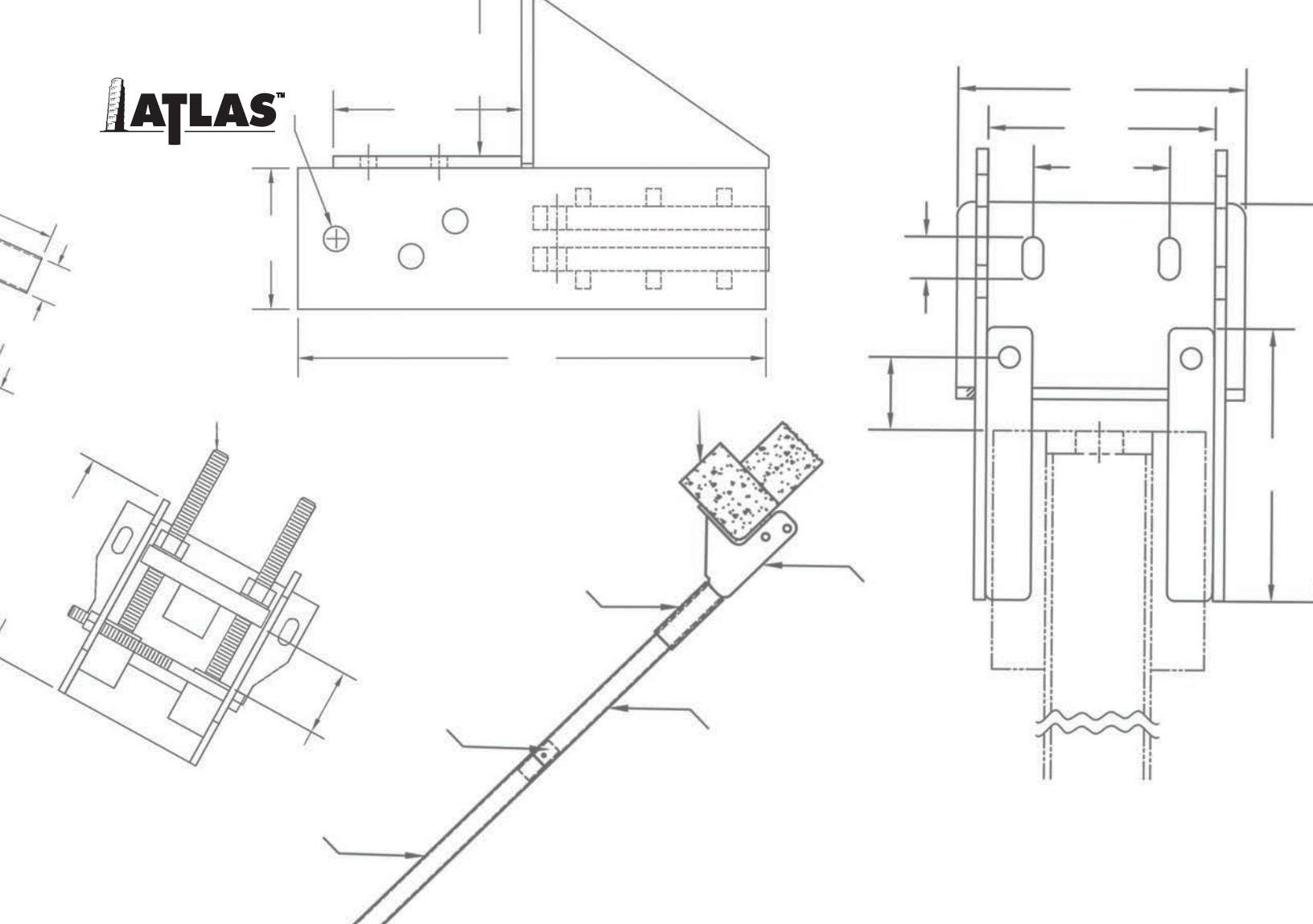
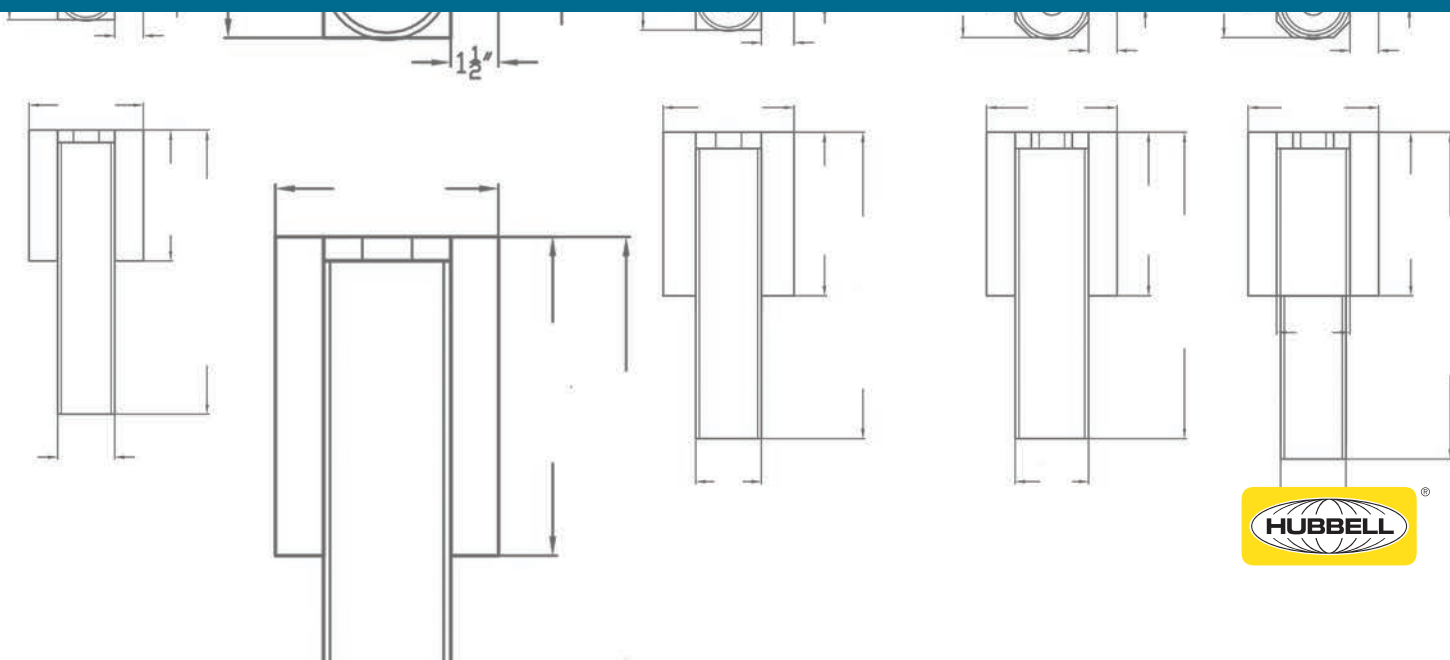


**ATLAS™**



# ATLAS RESISTANCE® SOLUTIONS

## PRODUCT CATALOG





## DISCLAIMER

**Disclaimer:** This catalog is provided as a guide to assist in product identification only. The information contained is for general information purposes only. The information is provided by Hubbell Power Systems, Inc. ("HPS"), and while we endeavor to keep the information up to date and correct, we make no representations or warranties of any kind, express or implied, about the completeness, accuracy, reliability, suitability or availability with respect to the catalog or the information, products, services, or related graphics contained in the catalog for any purpose. Any reliance you place on such information is therefore strictly at your own risk and HPS shall not be responsible for the adoption, revision, implementation, use or misuse of this information or its products herein. HPS recommends an independent engineering analysis of the installation (including soil and structure) conditions to determine the appropriate product for the intended use.

### Contact us:

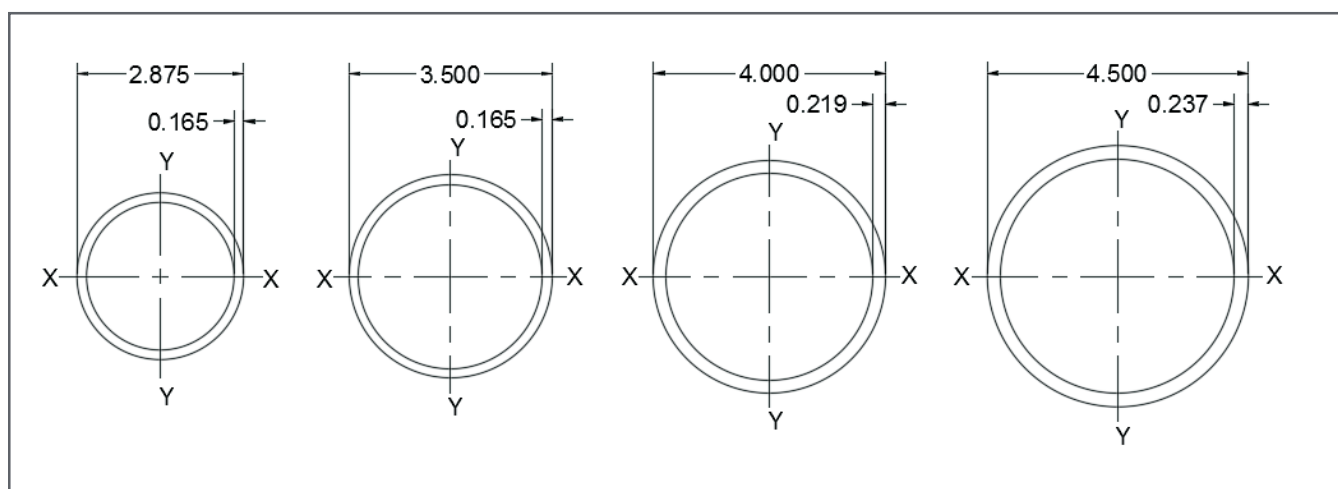
Hubbell Power Systems, Inc.  
210 North Allen Street  
Centralia, MO 65240  
Ph: 855.477.2121  
Email: [civilconstruction@hubbell.com](mailto:civilconstruction@hubbell.com)  
[chancefoundationsolutions.com](http://chancefoundationsolutions.com)

## Introduction

The ATLAS Resistance® pier is an assembly of structural steel components that includes a steel bracket assembly attached to the foundation or slab, which is then mounted on a steel pier that is installed to bedrock or firm bearing stratum. The lead pier starter section includes a unique friction reduction collar that tends to reduce skin friction on the pier pipe during installation.

Hubbell Power Systems, Inc. offers a broad range of pier pipe sizes and remedial repair brackets for both foundation underpinning and slab underpinning applications.

### PIER PIPE SHAFTS Cross Section Drawings

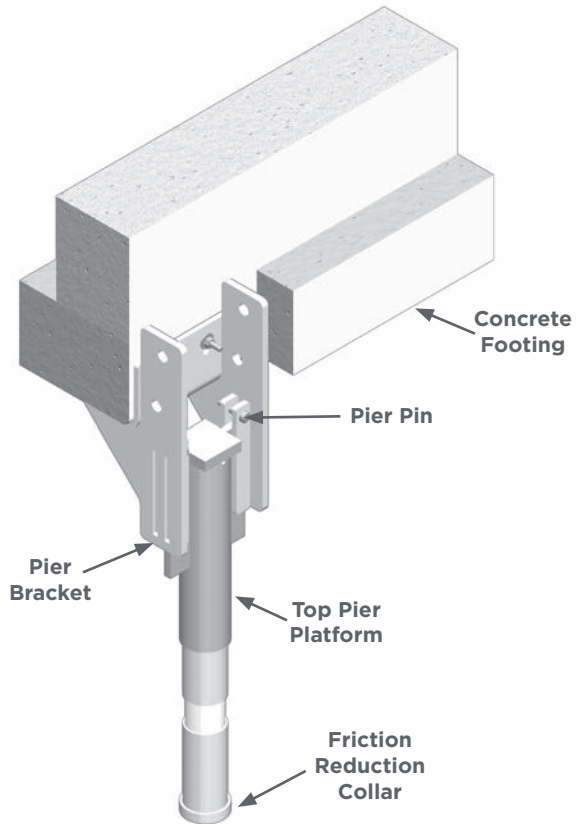


**PIER SECTION PROPERTIES**  
**TABLE 1**

Product Series	Shaft Size in (mm)	Wall Thickness in (mm)	Metal Area In <sup>2</sup> (cm <sup>2</sup> )	Perimeter in (cm)	Moment of Inertia in <sup>4</sup> (cm <sup>4</sup> ) <i>I<sub>x-x</sub></i> , <i>I<sub>y-y</sub></i> , <i>I<sub>x-y</sub></i>	Section Modulus In <sup>3</sup> (cm <sup>3</sup> )	
						<i>S<sub>x-x</sub></i> , <i>S<sub>y-y</sub></i>	<i>S<sub>x-y</sub></i>
RS2875.165	2.875 (73)	0.165 (4.2)	1.4 (9.0)	9.0 (22.9)	1.29 (53.7)	0.90 (14.7)	0.90 (14.7)
RS3500.165	3.5 (89)	0.165 (4.2)	1.7 (11.0)	11.0 (27.9)	2.41 (100.3)	1.38 (22.6)	1.38 (22.6)
RS4000.219	4.0 (101)	0.219 (5.6)	2.6 (16.8)	12.6 (32.0)	4.66 (194.0)	2.33 (38.2)	2.33 (38.2)
RS4500.237	4.5 (114)	0.237 (6.0)	3.2 (20.6)	14.1 (35.9)	7.23 (301.0)	3.21 (52.6)	3.21 (52.6)

*Because Hubbell has a policy of continuous product improvement, we reserve the right to change design and specifications without notice.*

## Standard and Modified 2-Piece Systems



### ATLAS Resistance® Piers 2-Piece Under Footing Pier System

- Use for lifts up to 4"
- All 2-piece pier systems include:
  - Pier bracket
  - Top pier platform
  - Kit provides 14 linear feet of pier pipe (including the starter section)
- Order Separately: Two pier pins (two Grade 8 bolts for 4-1/2" pier) and pier shims. Each pier requires a minimum of four anchor bolts. **NOTE:** Anchor bolts are not supplied by HPS.
- Standard finish is all mill steel (except the 3-1/2" series, which has "smooth coat" corrosion protection on the pier pipe, standard). Specify finish within brackets when ordering.

**2-7/8" STANDARD AND MODIFIED 2-PIECE ATLAS RESISTANCE® PIER KITS**  
**TABLE 2**

	Catalog No.	PSA1847	PSA3936	PSA4799
	Coating <sup>3</sup>	P-SC	G-SC	G
	Pier Dia. (in)	2-7/8	2-7/8	2-7/8
	Ultimate Capacity <sup>1</sup> (kips)	60	60	70
	Max Working Capacity <sup>1</sup> (kips)	30	30	35
PSA1034N	UF Bracket - Plain	1		
PSA1035	TPP - Plain	1		
PSA1341	Pier Section - SC	3	3	
PSA7369	Starter Section - SC	1	1	
PSA1055N	UF Bracket - Galv		1	1
PSA1056	TPP - Galv		1	
PSA1057	Pier Section - Galv			3
PAS4840	Modified TPP - Galv			1
PSA4461	Modified Sleeve - Galv			1
PSA1058	Starter Section - Galv			1

Because Hubbell has a policy of continuous product improvement, we reserve the right to change design and specifications without notice.

### 3-1/2" STANDARD AND MODIFIED 2-PIECE ATLAS RESISTANCE® PIER KITS

TABLE 3

	Catalog No.	PSA1000N	PSA1051N	PSA1104N
	Coating <sup>3</sup>	P-SC	G-SC	G-SC
	Pier Dia. (in)	3-1/2	3-1/2	3-1/2
	Ultimate Capacity <sup>1</sup> (kips)	85	85	91
	Max Working Capacity <sup>1</sup> (kips)	42.5	42.5	45.5
PSA1052N	UF Bracket - Galv		1	1
PSA1053N	TPP - Galv		1	
PSA1003	Pier Section -SC	3	3	3
PSA1004	Starter Section -SC	1	1	1
PSA1001N	UF Bracket - Plain	1		
PSA1002N	TPP - Plain	1		
PSA1106	Sleeve Section - Galv			1
PSA1105	Modified TPP - Galv			1

### 4" & 4-1/2" STANDARD AND MODIFIED 2-PIECE ATLAS RESISTANCE® PIER KITS

TABLE 4

	Catalog No.	PSA2977N	PSA2978
	Coating <sup>3</sup>	G	G
	Pier Dia. (in)	4	4-1/2
	Ultimate Capacity <sup>1</sup> (kips)	98	141
	Max Working Capacity <sup>1</sup> (kips)	49	71.5
PSA1152	Pier Section - Galv	3	
PSA1153	Starter Section - Galv	1	
PSA1105	TPP	1	
PSA7037	UF Bracket - Galv	1	
PSA2980	TPP - Galv		1
PSA2982	Starter Section - Galv		1
PSA2981	Pier Section - Galv		3
PSA2979	Bracket - Galv		1

Notes:

- Design used in ICC Legacy Report NER-579. Capacities based upon maximum pipe exposure of 2 feet and soil strength having a minimum Standard Penetration Test (SPT) Blow Count "N" of 4. The capacities are based on a pier depth to fixity of 5'-6"
- Complies with the structural provisions of the most recent editions of BOCA National Code, ICBO Uniform Code, SBCCI Standard Code and 2000 International Building and Residential Code (2002 Accumulative Supplement). (See Appendix C.)
- Specified letter for available finishes: P = Entire product supplied mill finish steel. G = Entire product supplied galvanized. P-SC= Plain steel bracket assembly; "smooth coat"corrosion protection on pier pipe. G-SC = Hot Dip Galvanized (HDG) bracket assembly; "smooth coat"corrosion protection on pier pipe.

Because Hubbell has a policy of continuous product improvement, we reserve the right to change design and specifications without notice.



# Accessories for ATLAS Resistance® Piers



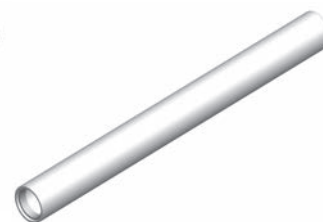
**Starter**



**Extension**



**Plain**



**Modified**

(Section length 3'-6")

**STARTER SECTION  
TABLE 5**

Catalog No.			Pier Dia. (in)	Weight (lbs)
Plain (P)	Smooth Coat (SC)	Galv. (G)		
N/A	PSA7369	PSA1058	2-7/8	19
N/A	PSA1004	N/A	3-1/2	24
PSA1110	N/A	PSA1153	4	35
PSA1261	N/A	PSA2982	4-1/2	45

(Section length 3'-6")

**PLAIN PIER SLEEVE  
TABLE 7**

Catalog No.		Pier Dia. (in)	Weight (lbs)
Plain (P)	Galv. (G)		
PSA4843	PSA4844	2-7/8	28
PSA1821	PSA1216	3-1/2	31
PSA1353	PSA3592	4	39

## Pier Pins

### PSA1030

- Tapered pier pin 5/8" diameter by 3" long - galvanized
- Pier pin fits all ATLAS 2-piece piers except 4-1/2" diameter pier systems.

### PSA5281

- Hex Bolt, 3/4" x 4" long
- For 4-1/2" dia., 2-piece piers only

(Includes coupling — Section length 3'-6")

**EXTENSION SECTION  
TABLE 6**

Catalog No.			Pier Dia. (in)	Weight (lbs)
Plain (P)	Smooth Coat (SC)	Galv. (G)		
N/A	PSA1341	PSA1057	2-7/8	19
N/A	PSA1003	N/A	3-1/2	24
PSA1107	N/A	PSA1152	4	37
PSA1260	N/A	PSA2981	4-1/2	45

## Modified Top Pier Sleeve:

Standard 3-1/2" OD x 0.216" wall x 42" long with internal ring. Fits under top pier platform – 2-7/8" diameter pier system (modified piers).

PLAIN = PSA2700

GALV = PSA4461

Standard 4" diameter x 0.219" wall x 42" long with internal ring. Fits under top pier platform — 3-1/2" diameter pier system (modified piers).

PLAIN = PSA1096

GALV = PSA1106

NOTE: This item included as part of the modified pier systems. (Designation "SC" [smooth coat] corrosion finish not available on pier sleeves).

## Shims

### PSA1031

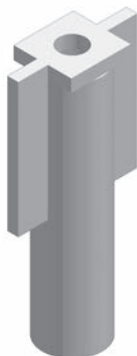
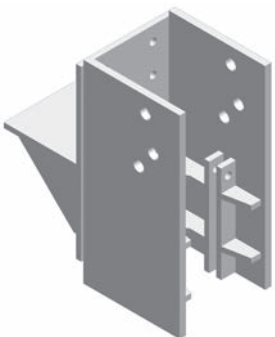
- 3/16" (nominal) thick pier shim (thick shim) – galvanized.

### PSA1032

- 1/16" (nominal) thick pier shim (thin shim) – galvanized.

NOTE: Shims are for all piers except continuous lift piers and slab piers.

Because Hubbell has a policy of continuous product improvement, we reserve the right to change design and specifications without notice.



## PUSH CAP FRICTION COLLAR

TABLE 8

Catalog No.	Description	Pier Dia. (in)	Weight (lbs)
PSA7362P	Displacement Ring	2-7/8	0.24
PSA7363P	Displacement Ring	3-1/2	0.27
PSA7364P	Displacement Ring	4	1.62
PSA7365P	Displacement Ring	4-1/2	1.80

## BRACKET ASSEMBLIES

TABLE 9

Catalog No.		Description	Fits Pier Size (in)	Weight (lbs)
Plain (P)	Galv. (G)			
PSA1034N	PSA1055N	2-Piece Bracket	2-7/8	57
PSA1001N	PSA1052N	2-Piece Bracket	3-1/2 / 4	72

Pier bracket (only) is designed to accept a 2-7/8", 3-1/2", and 4-1/2" OD pier shaft. Specify finish (similar to illustration).

## PLATE PIER BRACKET ASSEMBLIES

TABLE 10

Catalog No.	Description	Fits Pier Size (in)	Weight (lbs)
PSA4483	Plate Pier Bracket	2-7/8	63
PSA4477	Plate Pier Bracket	3-1/2 / 4	100

\* For non-galvanized, contact your distributor.

## PRE-DRILL BRACKET ASSEMBLIES

TABLE 11

Catalog No.	Description	Fits Pier Size (in)	Weight (lbs)
PSA4838	Pre-Drill Bracket	2-7/8	84
PSA3925	Pre-Drill Bracket	3-1/2 / 4	134

\* For non-galvanized, contact your distributor.

Use with 2-piece, plate pier and pre-drilled brackets.

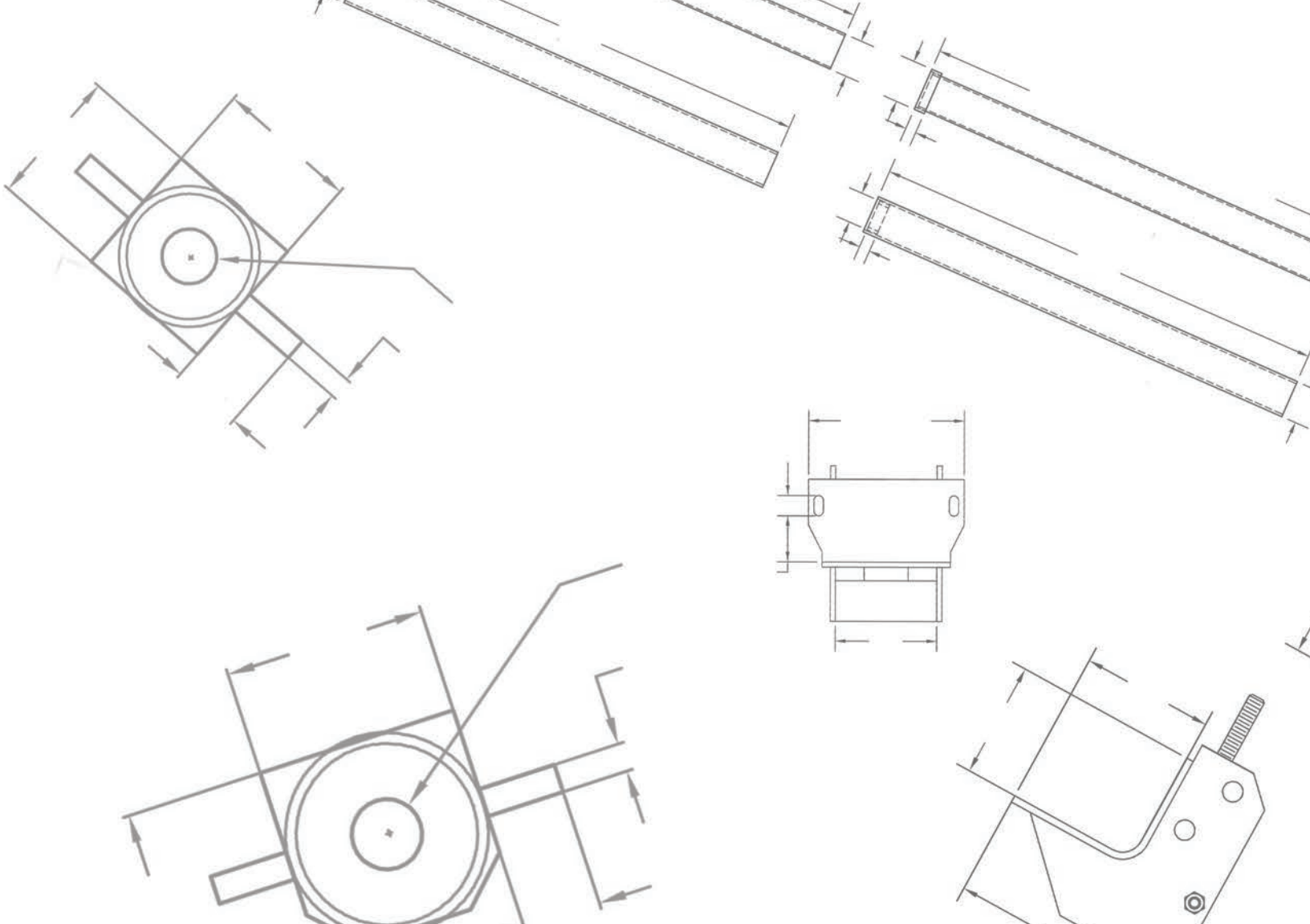
Top pier platform is designed to accept a 2-7/8", 3-1/2", 4", and 4-1/2" OD pier shaft (16-5/8" and 17-3/4" long sleeve).

## TOP PIER PLATFORMS

TABLE 12

Catalog No.		Fits Pier Size (in)	Length (in)	Weight (lbs)
Plain (P)	Galv. (G)			
PSA1035	PSA1056	2-7/8 Std.	16-5/8	19
PSA1002N	PSA1053N	3-1/2 Std.	17-3/4	26
PSA1095N	PSA1105N	3-1/2 Mod.		28
PSA2210	PSA2980	4-1/2 Std.	17-3/4	37

Because Hubbell has a policy of continuous product improvement, we reserve the right to change design and specifications without notice.



Never Compromise™



CHANCE Civil Construction | 210 North Allen Street | Centralia, MO 65240 | United States of America

©Copyright 2017 Hubbell Incorporated. Because Hubbell has a policy of continuous product improvement, we reserve the right to change design and specifications without notice.

Printed in the U.S.A. | CA\_04\_142\_E

