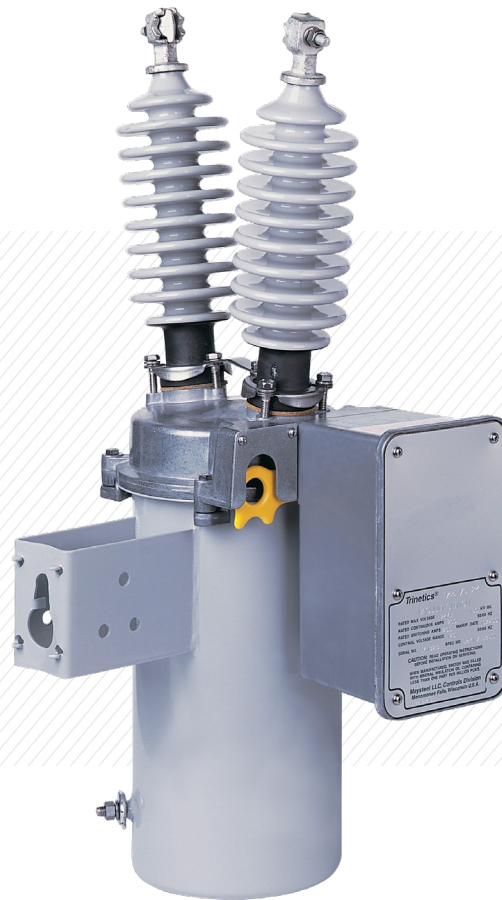


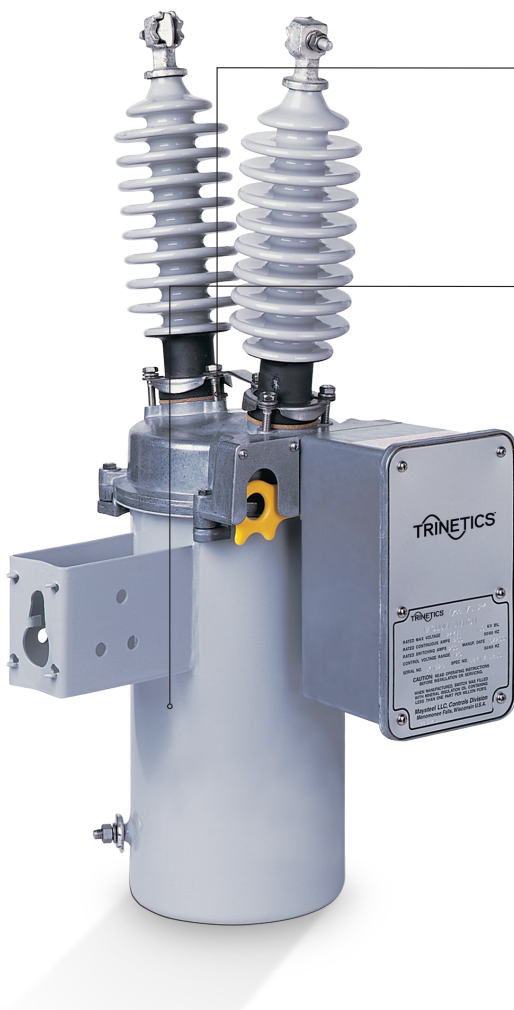
Reliable, Cost-Effective  
Capacitor switching



## Vacuum-type Capacitor Switches

Hubbell Power Systems, Inc (HPS) TRINETICS® high-performance 200A vacuum switches, available for system applications up to 34.5kV grounded wye, are field proven in thousands of applications. They feature the highest voltage ratings on the market in single-phase switches at 24kV, including a range of BIL levels for added capacity and protection.

Use Trinetics® vacuum switches in combination with voltage, temperature, time, and VAR controls on a pole- or pad-mounted SmartBank™ station for a one-stop total capacitor solution.



**Center lifting point**

**Porcelain bushings** Porcelain bushings designed for low radio interference available in 11", 17", 24" versions

**Weather shield** covers the manual operation lever

**Five-pin receptacle** with integrated NEMA hanger for quick and easy installation. Pole, wall, or frame mounting possible without additional wiring or hardware. Kits available for cross-arm mounting.

**Motor draws 3 amps** versus 9-12 amps for equivalent solenoid-operated switches, allowing operation in low voltage conditions.

**Switch-rating data** is permanently engraved on a heavy-duty aluminum nameplate; all exterior hardware is stainless steel, aluminum, or plated brass.

Can be operated manually or automatically with micro-processor controls. An external power source is not required to close the switch manually.

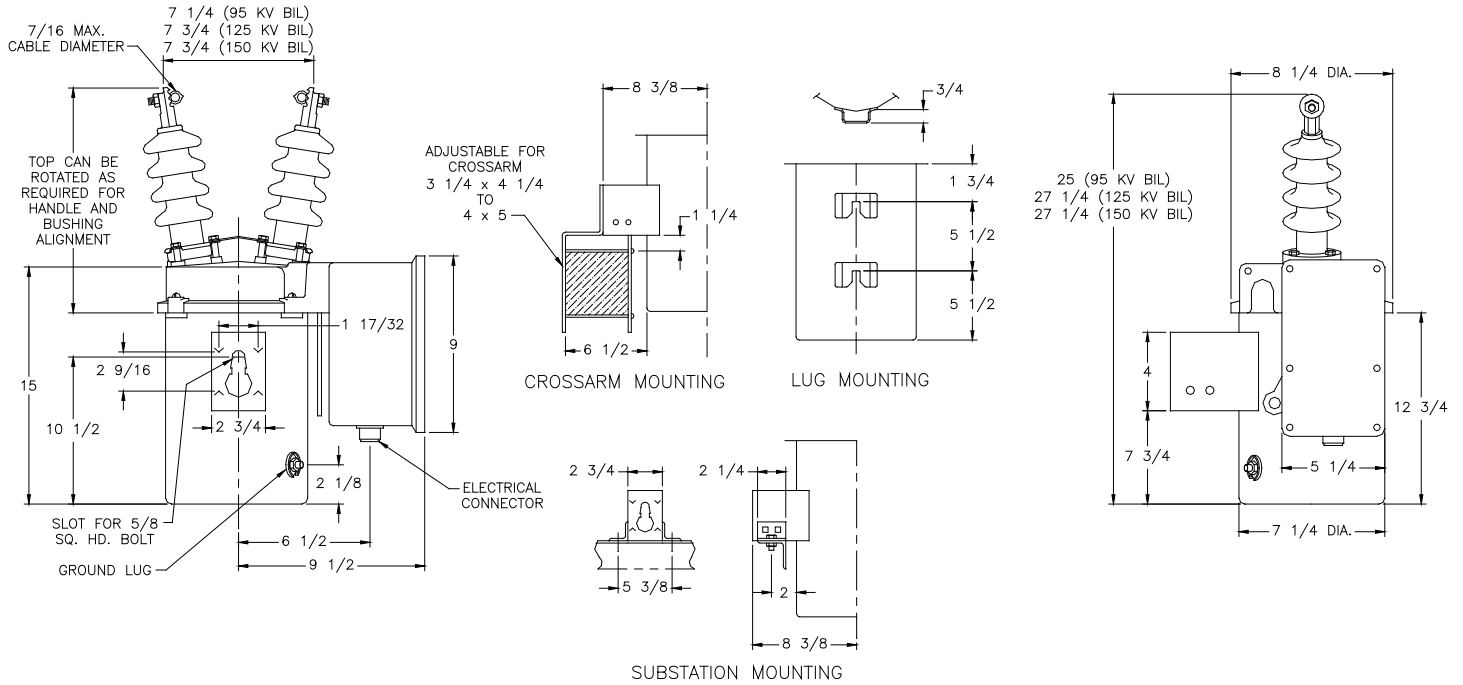
15kV and 24kV designs, both fully conformed to ANSI Standard C37.66 for safety and performance.

Extended vacuum bottle gap provides the distance needed for BIL levels higher than 95kV.

## VACUUM SWITCHES | VACUUM UNDER OIL CAPACITOR SWITCHES

Specifications	VS 15		VS 20	
Rated Maximum Voltage, kV RMS	15.0		24.0	
Nominal Voltage Class, kV RMS	14.4		22.9	
Impulse Withstand Voltage, kV BIL	95/125		125/150	
Low Frequency Insulation Level Withstand Test, 60 Hz: 1 Minute Dry, kV 10 Seconds Wet, kV	35/45 30/40		45 40	
Continuous Current, Amps	200		200	
Capacitive Switching Current, Amps	200		200	
Momentary Current Rating, Amps Asymmetrical	9000		9000	
Short Time Current Ratings: 1/2 Second, Amps Symmetrical 1 Second, Amps Symmetrical	6000 4500		6000 4500	
High Frequency Transient Making Current, Amps Peak	12000		12000	
Nominal Operating Voltage, VAC 50/60 Hz Operating Voltage Range, VAC 50/60 Hz	120 100 to 130	240 210 to 250	120 100 to 130	240 210 to 250
Motor Current Rating, Amps	2.8	1.4	2.8	1.4
Switch Operating Time, Seconds (Average/Max.)	2.5/4.0		2.5/4.0	
Weight with Oil, Pounds	45		45	
Oil Volume, Gallons	1.6		1.6	

## Product Dimensions



## VS Capacitor Switch Selection

Bushing Creep Distance	Load Rating	Product Description	kV		Spec #	Part #
			L-G	BIL		
11"	200A	VS15-95	15	95	6814	33184401
17"	200A	VS15-125	15	125	6815	33183501
17"	200A	VS24-125	24	125	6869	33195601
17"	200A	VS24-150	24	150	6870	33195701
24"	200A	VS24-150	24	150	6871	33195801

Switch Auxiliary Options - Substitute for the last 2 digits in the switch part numbers above.

- 02 - Form C Aux Switch (A & B contacts with LV supply common neutral), 5-pin receptacle
- 04 - Form A (N.O.) Dry Aux switch, 5-pin receptacle
- 07 - Form C - Dry Aux Switch; 6-pin receptacle
- 15 - Form B (N.C.) Dry Aux Switch, 5-pin receptacle



[hubbelpowersystems.com](http://hubbelpowersystems.com)

©2018 Hubbell Power Systems. All rights reserved.  
Please contact [Trinetics-Marketing@hubbell.com](mailto:Trinetics-Marketing@hubbell.com) or your Hubbell Sales Representative or Customer Service for additional information.

Hubbell, the Hubbell logo are registered trademarks or trademarks of Hubbell Power Systems.  
All other trademarks are the property of their respective owners.  
Printed in U.S.A. BR\_10\_206\_E