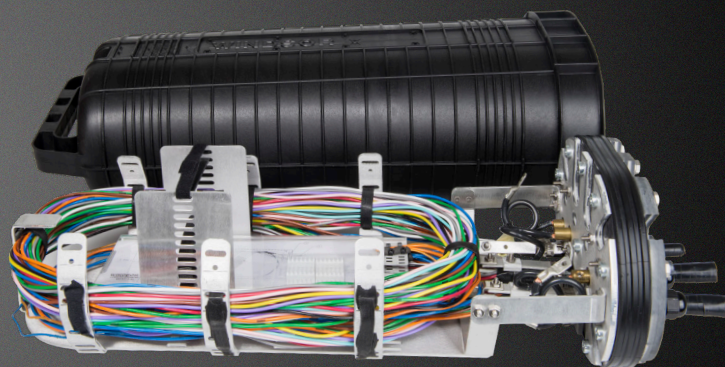
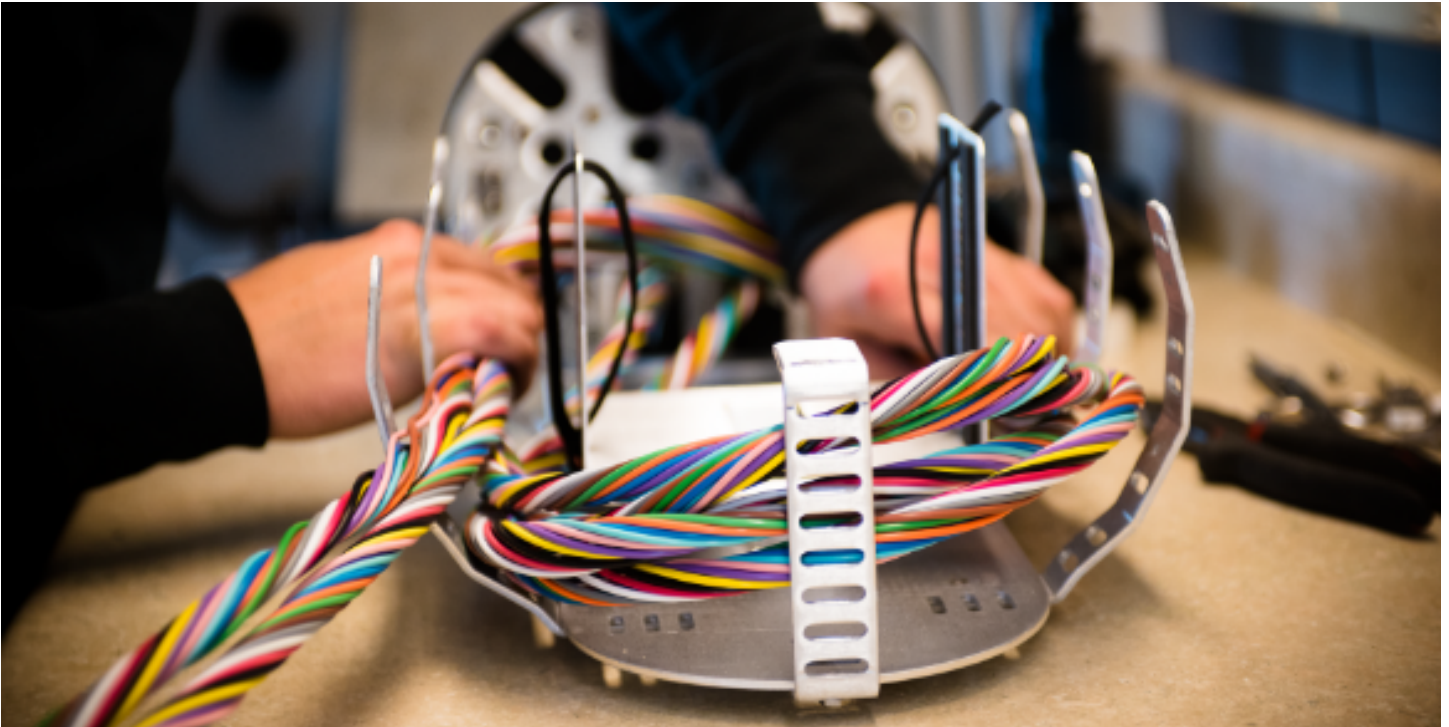


Fiber Splice Closures

FOR DIELECTRIC, ARMORED, AND OPGW CABLES
REV. - 05/2019



Hubbell Fiber Splice Closures



Hubbell fiber splice closures are designed by former splice technicians with flexibility and ease of workmanship in mind. All splice closures are sold fully assembled to reduce labor costs, splicing time, and chances of craft error. With over 30 years of splicing product design and manufacturing experience, and proven field performance, Hubbell closures are the ideal choice for your fiber networks.

KEY FEATURES:

- Shipped Fully Assembled
- For Dielectric, Armored, and OPGW Cables
- EPDM rubber compression seal for 570 and 790 Closures
 - Waterproof
 - Peel out concentric rings to quickly and accurately size seal to cable
 - Split to provide access to all ports without service interruption
- Urethane compression seal with grommets for 350 and 570G closures
- All ports are slotted to eliminate trapped cables allowing easy cable additions and mid-sheath splicing
- Flat drop grommets available for 350, 570, 570G and 790 closures
- Unsurpassed buffer tube storage capacity
- Convenient carrying/lifting handle for 570, 570G and 790 and lifting eye for 350
- IG closures facilitate toning of individual cables without needing to reenter the closure
- Assembled in the USA

THREE END PLATE OPTIONS:

- Dielectric
- Isolated Ground
- OPGW (570 and 790 only)

MODEL	SPLICE CAPACITY		DOME DIMENSIONS		CABLE PORTS
	SINGLE	RIBBON	OPENING	LENGTH	
350	96	288	4.5" X 5.8"	21"	4
570 & 570G	192	576	5.5" X 8"	22"	6
790	648	1728	7.5" X 10"	24"	8

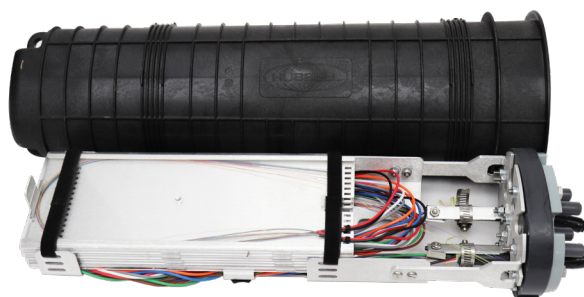
HPS has a policy of continuous product improvement. For current product design specifications and terms and conditions, please visit hubbellpowersystems.com.



350 SERIES

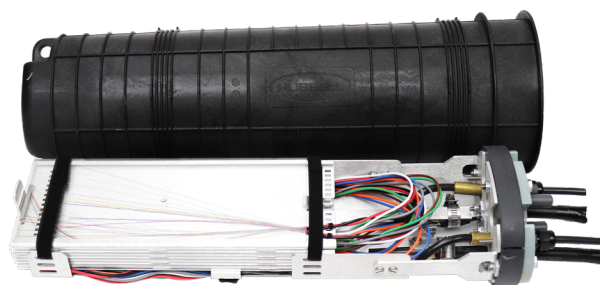
350 DIELECTRIC END PLATE:

- 4 Cable Entry Ports
 - 2 Backbone ports accept cable up to 0.625" OD
 - 2 Lateral ports accept up to 0.625" OD
- 2 Grommet bags and stand offs for butt splice included
- Peel out grommets available for an additional charge
- Additional cables can be added with cable build out kit on page 9. (mounting options and accessories).



350 ISOLATED GROUND END PLATE:

- 4 Isolated Ground Ports
 - 2 Backbone ports accept cable up to 0.625" OD
 - 2 Lateral ports accept up to 0.625" OD
- Connect or disconnect armor grounds on outside of the closure
- Water Tight compression connector seals around ground wires
- 2 Grommet bags and stand offs for butt splice included
- Peel out grommets available for an additional charge
- 2 Grommet bags, ground rod assemblies and stand offs for butt splice included
- Additional cables can be added with cable build out kit on page 9. (mounting options and accessories)



HPS has a policy of continuous product improvement. For current product design specifications and terms and conditions, please visit hubbellpowersystems.com.

570 GROMMET “G” SERIES

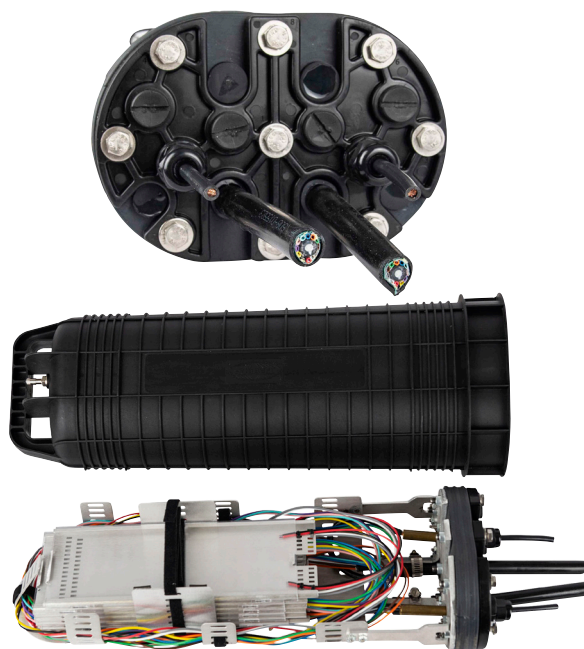
570G DIELECTRIC END PLATE:

- 6 Cable Entry Ports
 - 4 Backbone ports accept cable up to 0.875" OD
 - 2 Lateral ports accept up to 0.750" OD
- 2 Grommet bags and stand offs for butt splice included
- Additional cables can be added with cable build out kit on page 9 (mounting options and accessories)
- Peel out grommets available for an additional charge



570G ISOLATED GROUND END PLATE:

- 6 Isolated Ground Ports
 - 4 Backbone ports accept cable up to 0.875" OD
 - 2 Lateral ports accept up to 0.750" OD
- 2 Grommet bags and stand offs for butt splice included
- Additional cables can be added with cable build out kit on page 9 (mounting options and accessories)
- Connect or disconnect armor grounds on outside of the closure
- Water Tight compression connector seals around ground wires
- Peel out grommets available for an additional charge



HPS has a policy of continuous product improvement. For current product design specifications and terms and conditions, please visit hubbellpowersystems.com.



570 SERIES

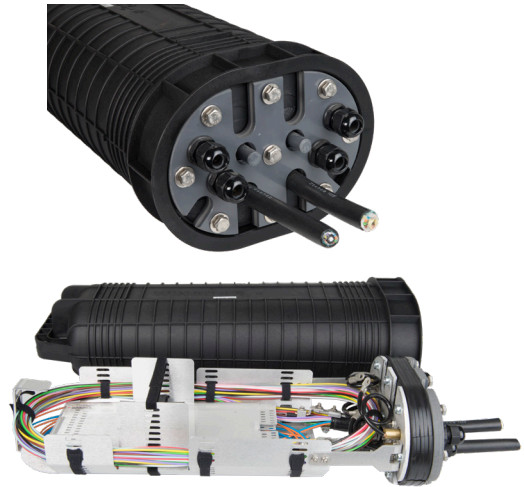
570 DIELECTRIC END PLATE:

- 6 Cable Entry Ports
 - 4 Backbone ports accept cable up to 0.875" OD
 - 2 Lateral ports accept up to 0.750" OD



570 ISOLATED GROUND END PLATE:

- 6 Isolated Ground Ports
 - 4 Backbone ports accept cable up to 0.875" OD
 - 2 Lateral ports accept up to 0.750" OD
- Connect or disconnect armor grounds on outside of the closure
- Water tight compression connector seals around ground wires



570 OPGW END PLATE:

- 6 Cable Entry Ports
 - 4 OPGW ports accept up to 0.687" OD
 - 2 ADSS or buried lateral cable ports accept up to 0.750" OD
- OPGW clamping system has substantial torque resistance and 1000 lbs pull out strength



HPS has a policy of continuous product improvement. For current product design specifications and terms and conditions, please visit hubbellpowersystems.com.

790 SERIES

790 DIELECTRIC END PLATE:

- 8 Cable Entry Ports
 - 4 Backbone ports accept cable up to 1.250" OD
 - 4 Lateral ports accept up to 0.875" OD

Image shown with optional Express Bracket



790 ISOLATED GROUND END PLATE:

- 8 Isolated Ground Ports
 - 4 Backbone ports accept cable up to 1.250" OD
 - 4 Lateral ports accept up to 0.875" OD
- Connect or disconnect armor grounds on outside of the closure
- Water tight compression connector seals around ground wires

Image shown with optional Express Bracket



790 OPGW END PLATE:

- 8 Cable Entry Ports
 - 4 OPGW ports accept up to 1.125" OD
 - 4 ADSS or buried lateral cable ports accept up to 0.875" OD
- OPGW clamping system has substantial torque resistance and 1000 lbs pull out strength



HPS has a policy of continuous product improvement. For current product design specifications and terms and conditions, please visit hubbellpowersystems.com.



CLOSURE ORDERING INFORMATION

ADSS OR ISOLATED GROUND END CAP

Example Part Number: PSCA790WEB

Hubbell Prefix	PSC	---	---	---	---
Closure Type					
A - ADSS						
I - Isolated Grounds						
Closure Size					
350						
570						
790						
Tray Capacity					
S - Standard for 12, 18, 24						
SG - Standard 570G series for 12, 18, 24						
W - Wide for 36, 48, 54 (790 only)						
Express Bracket (790 only)					
EB - Optional						

OPGW END CAP

Example Part Number: PSCO7904300000WEB

Hubbell OPGW Prefix	PSCO	---	---	---	---	---
Closure Size						
570							
790							
Number of OPGW Ports						
4 Maximum							
Outer Diameter of OPGW						
Decimal Inches							
Diameter of Al Tube						
Decimal Inches (if SS Tubes, "000")							
Tray Capacity						
S - Standard for 12, 18, 24							
W - Wide for 36, 48, 54 (790 only)							
Express Bracket (790 only)						
EB - Optional							

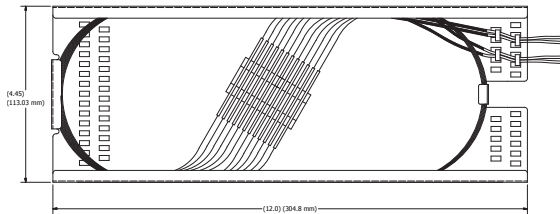
HPS has a policy of continuous product improvement. For current product design specifications and terms and conditions, please visit hubbellpowersystems.com.



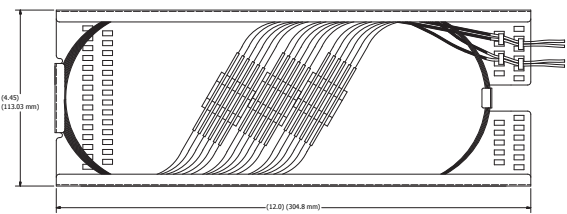
SPLICE TRAYS

OPTION

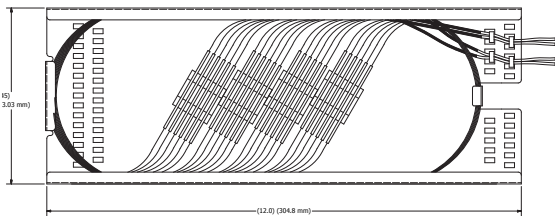
1	PSC20512	12 FIBER STANDARD SPLICE TRAY SINGLE FIBER SPLICE
2	PSC20518	18 FIBER STANDARD SPLICE TRAY SINGLE FIBER SPLICE
3	PSC20524	24 FIBER STANDARD SPLICE TRAY SINGLE FIBER SPLICE
4	PSC20536	36 FIBER WIDE SPLICE TRAY FOR 790 ONLY
4	PSC20548	48 FIBER WIDE SPLICE TRAY FOR 790 ONLY
4	PSC20554	54 FIBER WIDE SPLICE TRAY FOR 790 ONLY
5	PSC205144	SPLICE TRAY 144 RIBBON FIBER
6	PSC20514TT	TRANSITION TRAY FOR SEPARATING FIBERS (SINGLE OR RIBBON)
1, 2, 3, 4	PSC10002P50	HEAT SHRINK SLEEVE SINGLE FUSION 2.375" (60 mm) LENGTH (qty 50)
7	PSC205288	SPLICE TRAY 288 RIBBON FIBER
5,7	PSC10002FP50	HEAT SHRINK SLEEVE MASS FUSION 1.575" (40 mm) LENGTH (qty 50)



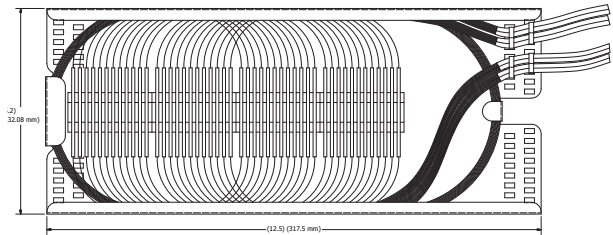
OPTION 1



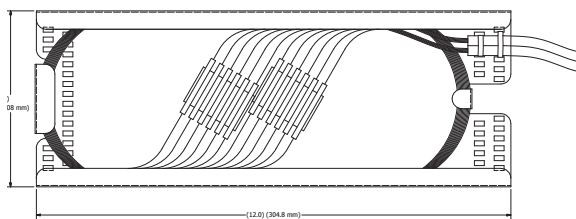
OPTION 2



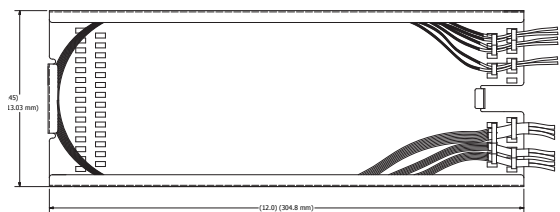
OPTION 3



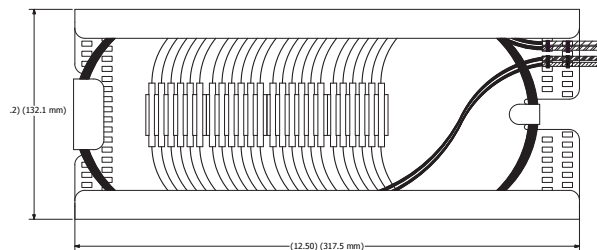
OPTION 4



OPTION 5



OPTION 6



OPTION 7

HPS has a policy of continuous product improvement. For current product design specifications and terms and conditions, please visit hubbelpowersystems.com.



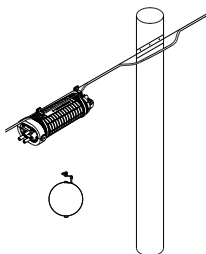
MOUNTING OPTIONS AND ACCESSORIES

OPTION

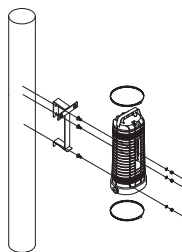
1	PSC570AB UBKTMK	350, 570 AND 790 AERIAL HANGING BRACKET ADJUSTABLE 350, 570 AND 790 AERIAL HANGING BRACKET NON-ADJUSTABLE
2	PSC700VCB	VERTICAL CLOSURE BRACKET FOR POLE OR WALL MOUNT
3A	PSC730CB	GALVANIZED STEEL COIL STORAGE BRACKET 60" FOR OPGW USED WITH VERTICAL CLOSURE BRACKET
3B	PSC730CB3	GALVANIZED STEEL COIL STORAGE BRACKET 30" FOR ADSS USED WITH VERTICAL CLOSURE BRACKET
3C	PSC4040198	ALUMINUM COIL STORAGE BRACKET 60" FOR OPGW USED WITH VERTICAL CLOSURE BRACKET
4	PSC4040132	UNIVERSAL ALUMINUM COIL STORAGE BRACKET 60" WITH STANDOFFS FOR OPGW
5A	PSC570BRC	570 14GA STAINLESS STEEL BULLET RESISTANT CANNISTER
5B	PSC790BRC	790 14GA STAINLESS STEEL BULLET RESISTANT CANNISTER
6	PSC730TPMB	TOWER POST MOUNTING BRACKET

ADD ONS AND ACCESSORIES

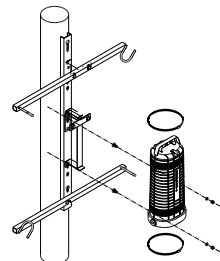
PSC350IGCBO	350 CABLE BUILD OUT KIT FOR 2 ADDITIONAL ARMORED CABLES W/ GROUNDS
PSC350ADCBO	350 CABLE BUILD OUT KIT FOR 2 ADDITIONAL DIELECTRIC CABLES
PSC570GADCBO	570G CABLE BUILD OUT KIT FOR 2 ADDITIONAL DIELECTRIC CABLES
PSC570GIGCBO	570G CABLE BUILD OUT KIT FOR 2 ADDITIONAL ARMORED CABLES W/ GROUNDS
PSC570IGCBO	570 CABLE BUILD OUT KIT FOR 2 ADDITIONAL ARMORED CABLES W/ GROUNDS
PSC570ADCBO	570 CABLE BUILD OUT KIT FOR 2 ADDITIONAL DIELECTRIC CABLES
PSC790IGCBO	790 CABLE BUILD OUT KIT FOR 4 ADDITIONAL ARMORED CABLES W/ GROUNDS
PSC790ADCBO	790 CABLE BUILD OUT KIT FOR 4 ADDITIONAL DIELECTRIC CABLES
PSC0570CBOXXXXYY	570 SET OF OPGW CLAMPS (REPLACE XXX WITH OD OF OPGW AND YYY WITH OD OF CENTRAL TUBE (IF SS TUBES, "000"))
PSC0790CBOXXXXYY	790 SET OF OPGW CLAMPS (REPLACE XXX WITH OD OF OPGW AND YYY WITH OD OF CENTRAL TUBE (IF SS TUBES, "000"))
PSC57010CK	570 CONDUIT KIT
PSC79010CK	790 CONDUIT KIT
PSC730PKS4	OPGW POTTING KIT FOR UP TO 4 TRAYS (2-LARGE POTTING KIT MOLDS (>0.750"), 2-SMALL POTTING KIT MOLDS (<0.750"), 8-48" NYLON TUBES, 6-8" POLY TUBES)
PSC730PKS8	OPGW POTTING KIT FOR UP TO 8 TRAYS (2-LARGE POTTING KIT MOLDS (>0.750"), 2-SMALL POTTING KIT MOLDS (<0.750"), 16-48" NYLON TUBES, 6-8" POLY TUBES)



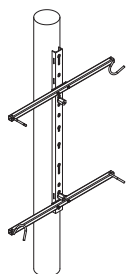
OPTION 1



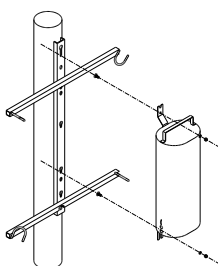
OPTION 2



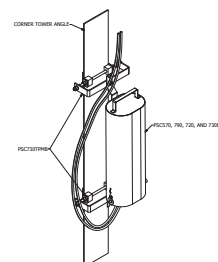
OPTION 3A, 3B & 3C



OPTION 4



OPTION 5A & B



OPTION 6

HPS has a policy of continuous product improvement. For current product design specifications and terms and conditions, please visit hubbelpowersystems.com.

URETHANE DOWNLEAD CLAMPS

FEATURES AND APPLICATIONS

- Downlead clamp with urethane rubber halves secures cables to structure without damaging fibers
- Designed for curved or flat surfaces and accepts up to 5/8" bolt
- Clamps available for cable diameters from 0.375"(9.5mm) up to 1.20" (30.5mm)
- Available as clamp blocks only, clamp blocks with mounting hardware or mounting hardware only
- Available in order increments of 10 clamps

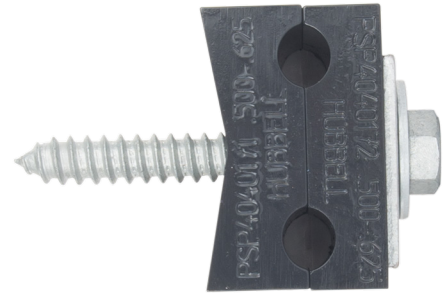
Clamp Body Only

PSCDLCU375500	DOWNLEAD CLAMP URETHANE .375-.500
PSCDLCU500625	DOWNLEAD CLAMP URETHANE .500-.625
PSCDLCU625750	DOWNLEAD CLAMP URETHANE .625-.750
PSCDLCU750875	DOWNLEAD CLAMP URETHANE .750-.875
PSCDLCU875100	DOWNLEAD CLAMP URETHANE .875-1.00
PSCDLCU100120	DOWNLEAD CLAMP URETHANE 1.00-1.20



Clamps with Lag Bolt

PSCDLCU375500L	DOWNLEAD CLAMP URETHANE .375-.500 LAG KIT
PSCDLCU500625L	DOWNLEAD CLAMP URETHANE .500-.625 LAG KIT
PSCDLCU625750L	DOWNLEAD CLAMP URETHANE .625-.750 LAG KIT
PSCDLCU750875L	DOWNLEAD CLAMP URETHANE .750-.875 LAG KIT
PSCDLCU875100L	DOWNLEAD CLAMP URETHANE .875-1.00 LAG KIT
PSCDLCU100120L	DOWNLEAD CLAMP URETHANE 1.00-1.20 LAG KIT



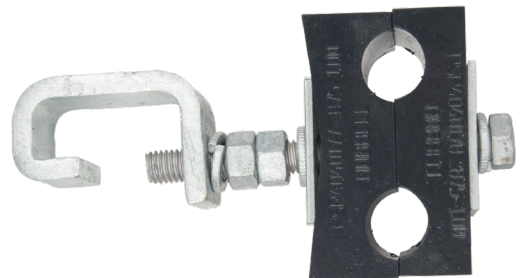
Clamps with Stainless Steel Banding Mount

PSCDLCU375500S	DOWNLEAD CLAMP URETHANE .375-.500 SSB KIT
PSCDLCU500625S	DOWNLEAD CLAMP URETHANE .500-.625 SSB KIT
PSCDLCU625750S	DOWNLEAD CLAMP URETHANE .625-.750 SSB KIT
PSCDLCU750875S	DOWNLEAD CLAMP URETHANE .750-.875 SSB KIT
PSCDLCU875100S	DOWNLEAD CLAMP URETHANE .875-1.00 SSB KIT
PSCDLCU100120S	DOWNLEAD CLAMP URETHANE 1.00-1.20 SSB KIT



Clamps with Tower Angle Mount Kit

PSCDLCU375500T	DOWNLEAD CLAMP URETHANE .375-.500 TOWER KIT
PSCDLCU500625T	DOWNLEAD CLAMP URETHANE .500-.625 TOWER KIT
PSCDLCU625750T	DOWNLEAD CLAMP URETHANE .625-.750 TOWER KIT
PSCDLCU750875T	DOWNLEAD CLAMP URETHANE .750-.875 TOWER KIT
PSCDLCU875100T	DOWNLEAD CLAMP URETHANE .875-1.00 TOWER KIT
PSCDLCU100120T	DOWNLEAD CLAMP URETHANE 1.00-1.20 TOWER KIT



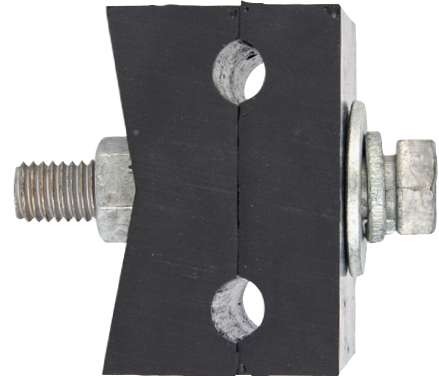
HPS has a policy of continuous product improvement. For current product design specifications and terms and conditions, please visit hubbelpowersystems.com.



URETHANE DOWNLEAD CLAMPS

Clamps with Bolt Kit

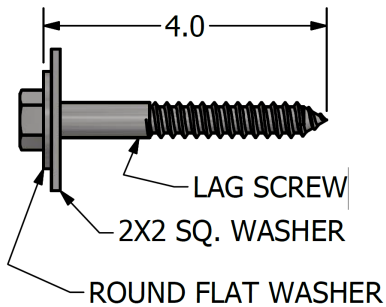
PSCDLCU375500B	DOWNLEAD CLAMP URETHANE .375-.500 BOLT KIT
PSCDLCU500625B	DOWNLEAD CLAMP URETHANE .500-.625 BOLT KIT
PSCDLCU625750B	DOWNLEAD CLAMP URETHANE .625-.750 BOLT KIT
PSCDLCU750875B	DOWNLEAD CLAMP URETHANE .750-.875 BOLT KIT
PSCDLCU875100B	DOWNLEAD CLAMP URETHANE .875-1.00 BOLT KIT
PSCDLCU100120B	DOWNLEAD CLAMP URETHANE 1.00-1.20 BOLT KIT



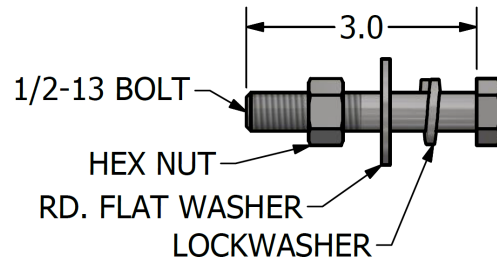
Hardware Kits (No blocks included)

PSE4040212P	L - LAG SCREW KIT
PSE4040213P	S - STAINLESS STEEL BANDING
PSE4040214P	T - TOWER MOUNTING KIT
PSE4040215P	B - BOLT KIT

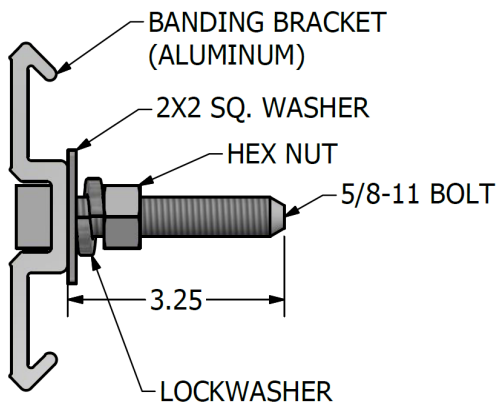
*NOTE: Dimensions below are in Inches



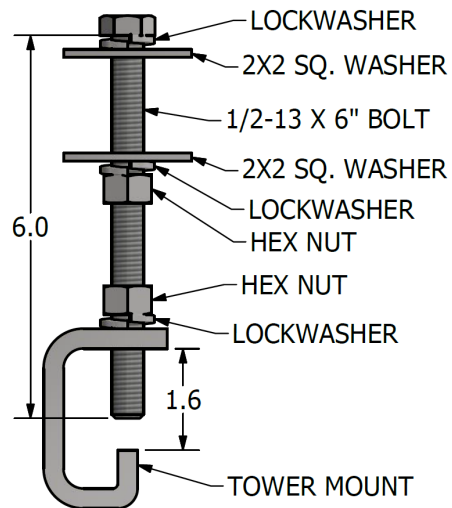
L - LAG SCREW



B - BOLT



S - STAINLESS STEEL BANDING



T - LATTICE TOWER

HPS has a policy of continuous product improvement. For current product design specifications and terms and conditions, please visit hubbelpowersystems.com.

FLAT DROP GROMMETS

FEATURES AND APPLICATIONS

- 4 flat drop ports per grommet for 350 closures
 - 350 – 8 total drops plus through cables
- Choice of 3 or 4 ports per grommet for 570 and 790 closures
 - 570 – 16 total drops plus through cables
 - 790 – 24 total drops plus through cables
- Soft urethane material
- Include plugs for ports not in use
- FTTx applications
- Can be kitted with closures



Flat Top Grommets		
PSC4040351	4 PORT FLAT DROP GROMMET, 350 CLOSURE	0.53 oz. (15 g)
PSC4040352	3 PORT FLAT DROP GROMMET, 570 & 790 CLOSURE	0.53 oz. (15 g)
PSC4040353	4 PORT FLAT DROP GROMMET, 570 & 790 CLOSURE	0.70 oz. (20 g)

HPS has a policy of continuous product improvement. For current product design specifications and terms and conditions, please visit hubbellpowersystems.com.



[illegible]

This image shows a single page of white paper with horizontal ruling lines. The lines are evenly spaced and extend across the width of the page, leaving small margins at the top and bottom. There is no handwriting or other markings on the paper.



14

[illegible]

©2019 Hubbell Incorporated | Spliced Closures | hubbelpowersystems.com



NOTE: Because Hubbell has a policy of continuous product improvement, we reserve the right to change design and specifications without notice.

©Copyright 2019 Hubbell Incorporated

Never Compromise™
www.hubbellpowersystems.com

Printed in USA



CA12027E