



PROTECTA MOUNTING OPTIONS

..... *Mounting Accessories for Protecta III Luminaires*





Follow us



Versatile Mounting Options Protecta Luminaire



The Protecta Mounting Accessories range is a complete solution consisting of everything required for mounting and installing our Protecta Luminaires.

From pole mounting to ceiling mounting and flush mounting all our accessories are made with marine grade 316L Stainless Steel materials, providing both quality and durability for the harshest environments.

Our reliable mounting accessories have been used worldwide since 1989 with our legacy Protecta products, and we continue to supply versatile mounting options suitable for our entire range of LED Protectas.

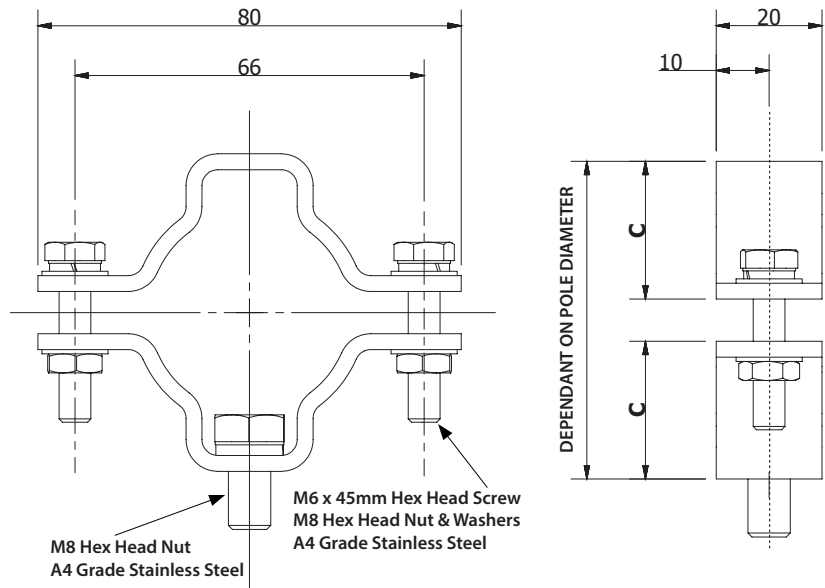
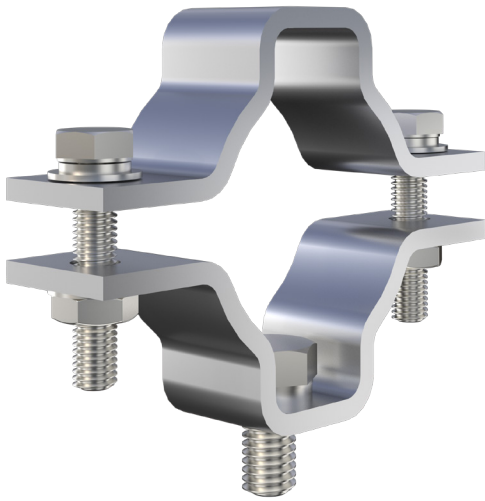
For all order enquiries contact our Sales Team

UK / Europe / Africa / North America **T:** +44 (0)141 810 9644 **E:** hhsales1@hubbell.com

Asia / Middle East / South America **T:** +44 (0)141 810 9666 **E:** hhsales2@hubbell.com

POLE MOUNTING

Bracket Assembly

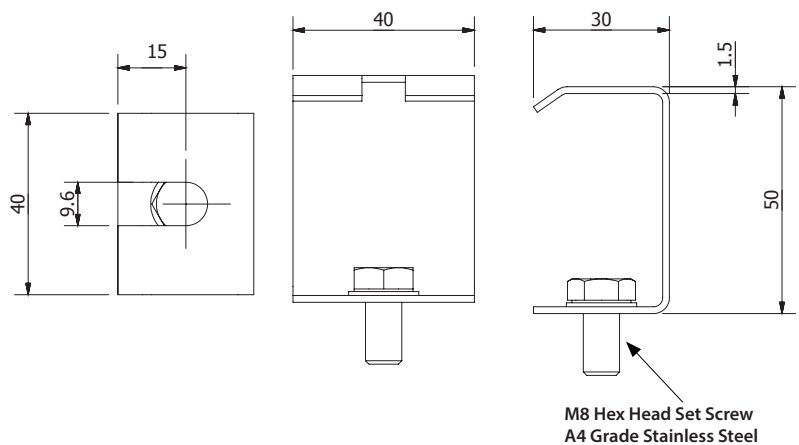


Part Code	Part Description	Material	A	B	C
SPOL4-100001	PROTECTA 38-42 P/M ASSY	316L STAINLESS STEEL	80mm	66mm	26mm
SPOL4-100002	PROTECTA 48-52 P/M ASSY	316L STAINLESS STEEL	90mm	76mm	32mm
SPOL4-100003	PROTECTA 58-62 P/M ASSY	316L STAINLESS STEEL	96mm	80mm	38mm

2 Sets of Assemblies per Part Code

HOOK TYPE - CEILING

Bracket Assembly

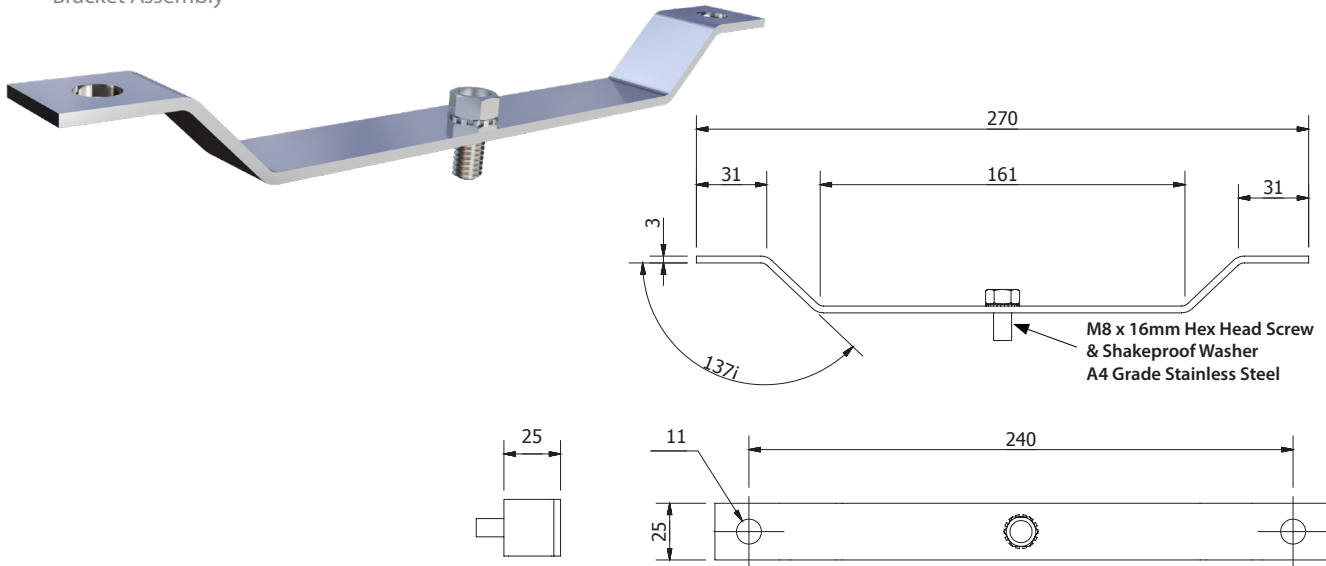


Part Code	Part Description	Material
SPRO4-0005	PROTECTA HOOK CEILING MOUNTING BRACKET ASSEMBLY	316L STAINLESS STEEL

2 Sets of Assemblies per Part Code

CEILING MOUNTING

Bracket Assembly

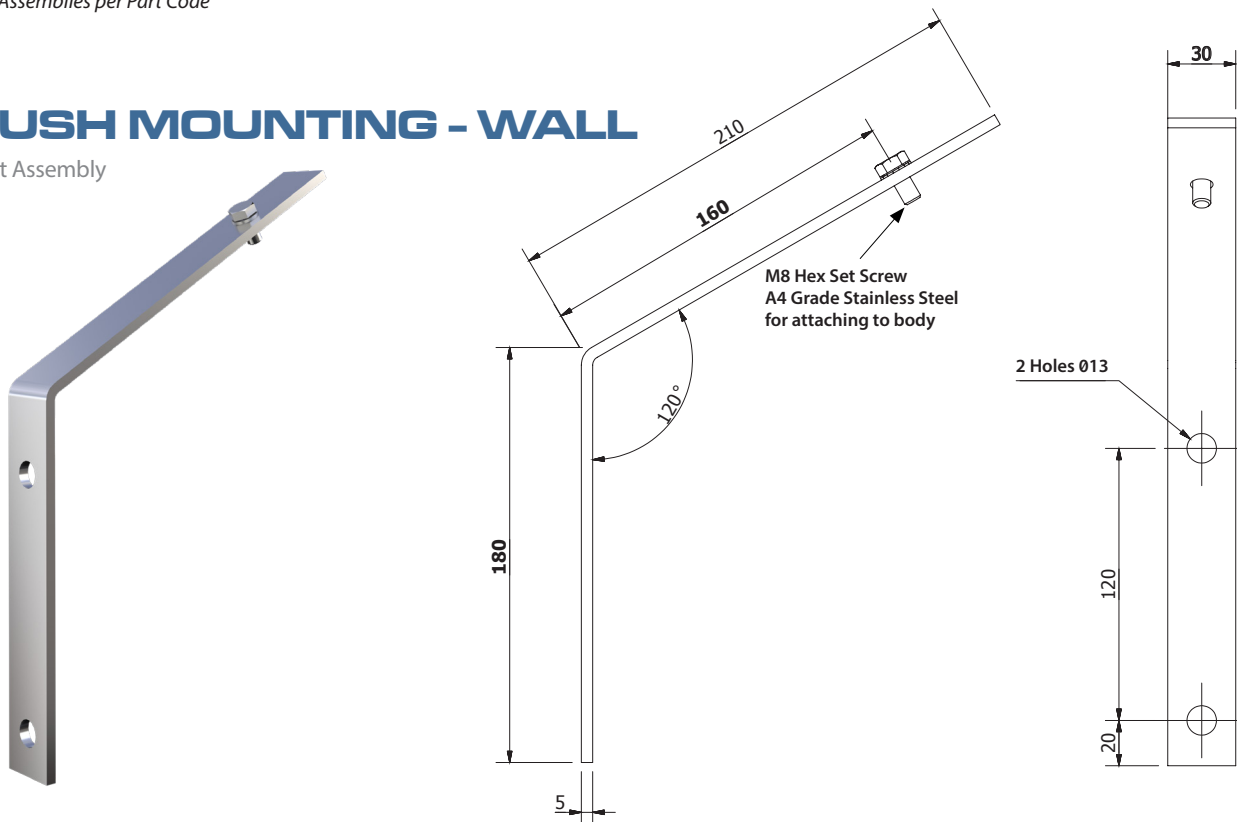


Part Code	Part Description	Material
SPRO4-0002	PROTECTA CEILING MOUNTING BRACKET ASSEMBLY	316L STAINLESS STEEL

2 Sets of Assemblies per Part Code

FLUSH MOUNTING - WALL

Bracket Assembly

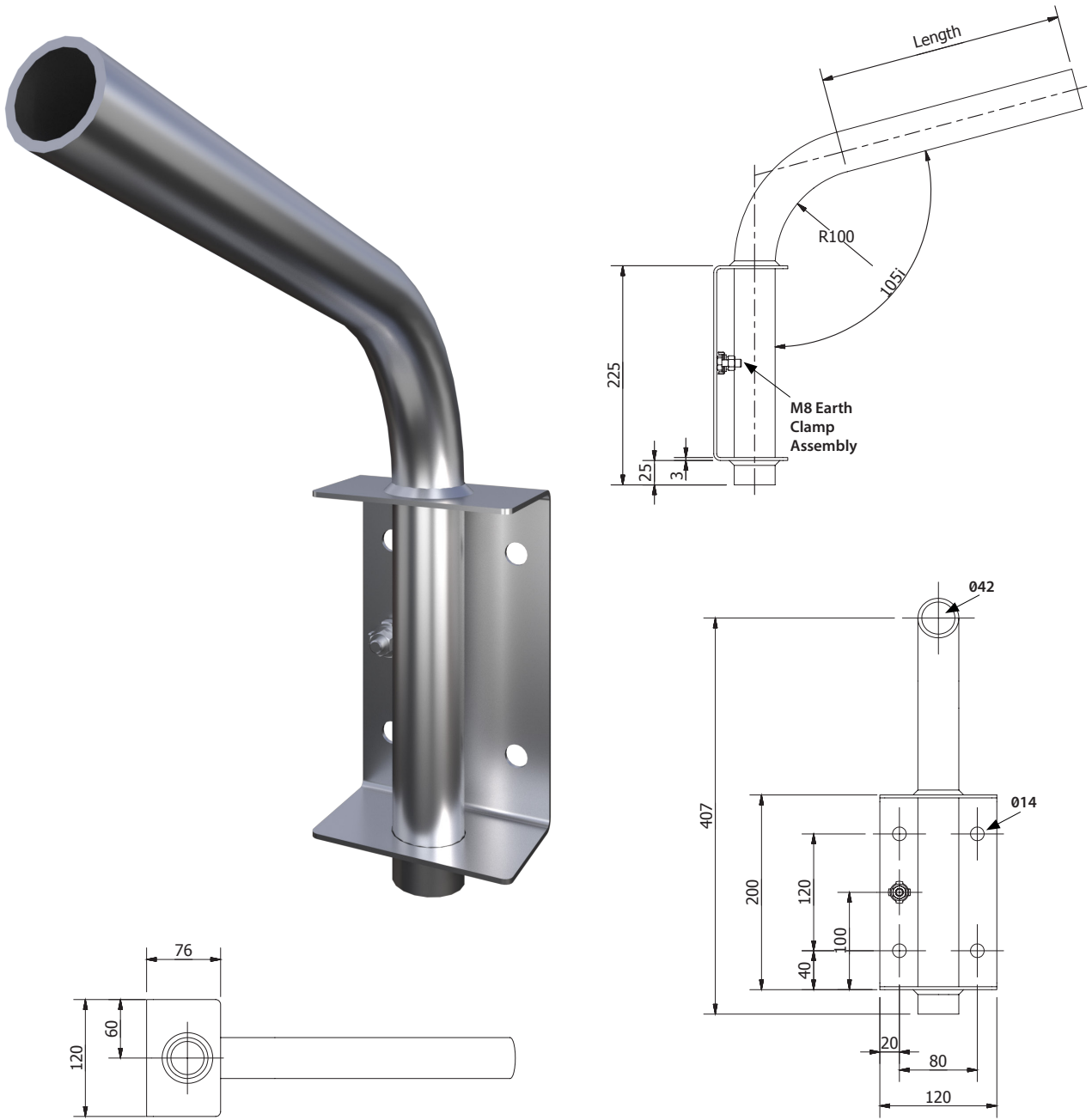


Part Code	Part Description	Material
SPRO4-0006	PROTECTA FLUSH 120i MOUNTING BRACKET ASSEMBLY	316L STAINLESS STEEL

2 Sets of Assemblies per Part Code

WALL MOUNTING OUTREACH

Bracket Assembly

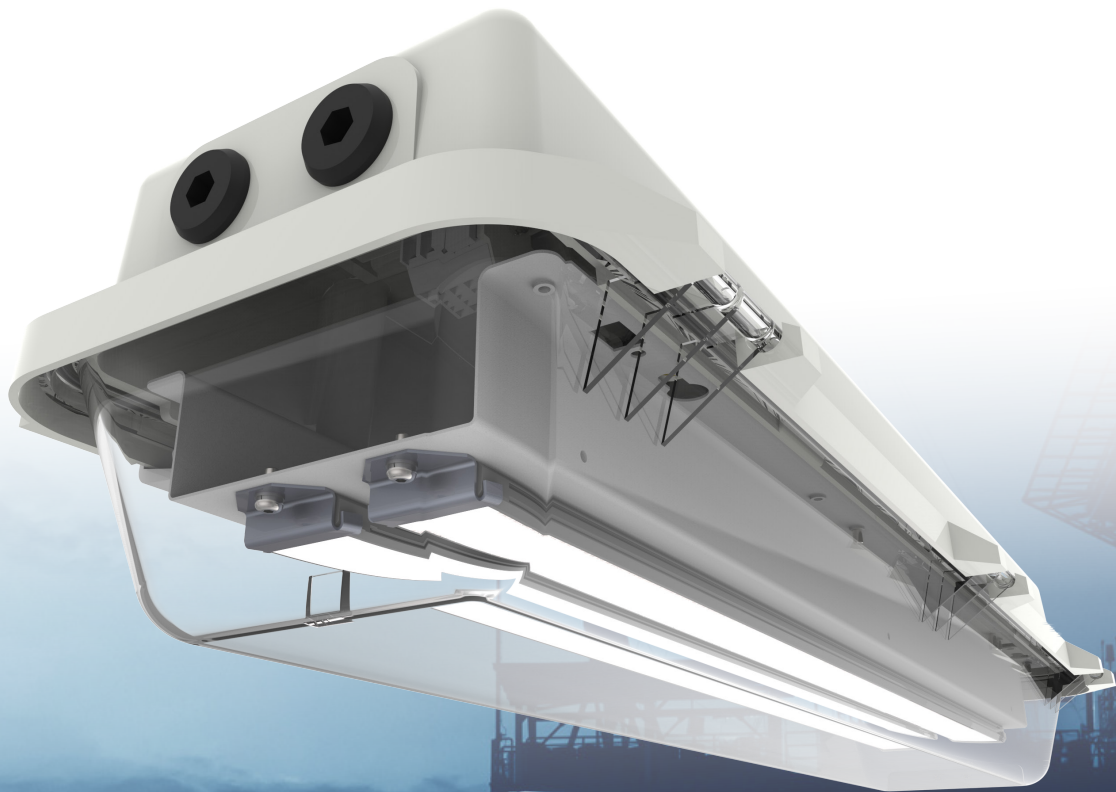


Part Code	Part Description	Material	Outreach Length
NPRO4-0007	PROTECTA OUTREACH BRACKET FOR SPIGOT ENTRY	316L STAINLESS STEEL	250mm
NPRO4-0008	PROTECTA OUTREACH BRACKET 18W BODY FOR USE WITH SPOL4-100001	316L STAINLESS STEEL	650mm
NPRO4-0012	PROTECTA OUTREACH BRACKET 36W BODY FOR USE WITH SPOL4-100001	316L STAINLESS STEEL	1250mm



PROTECTA III

Ex e LED LUMINAIRE



- Highly energy efficient
- Full length, easy access diffuser clamp
- Screwless mains terminals
- 120,000 maintenance free hours @ 25°C
- DTS-01 deluge tested
- Retrofit geartray available

Market leading product design
incorporating the latest LED technology.



Follow us

www.chalmit.com



United Kingdom

Chalmit 388 Hillington Road Glasgow G52 4BL UK
Tel: +44 (0) 141 810 9644 Email: hhsales1@hubbell.com
Tel: +44 (0) 141 810 9666 Email: hhsales2@hubbell.com

Americas

Killark Electric, 2112 Fenton Logistics Park Blvd
Fenton, MO 63026
Tel: +1 (314) 531 0460 Email: killarkinfo@hubbell.com

Middle East

Building No. 5EA Office No. G03
Dubai Airport Free Zone (DAFZ) PO Box 23529 Dubai UAE
Tel: +971 (0)4 609 1222 Email: middle-east@chalmit.com

Asia Pacific

130 Joo Seng Road #03-02 Olivine Building Singapore 368357
Tel: +65 6282 2242 Email: asia-pacific@chalmit.com

Korea

512 Hyosung Intellian 681-3 Deungchon Dong
Kangseo-Ku Seoul 157-030 Korea
Tel: +82 2 2063 3719 Email: korea@chalmit.com

China

Room H/I 18F No. 728 Pudong Avenue
Shanghai International Ocean and Finance Building
Shanghai 200120 P.R. China
Tel: (86 21) 3392 6550 ext. 318 Email: china@chalmit.com



A proud member of the Hubbell family.

©2022 Hubbell Incorporated. Because Hubbell has a policy of continuous product improvement, we reserve the right to change design and specifications without notice.

HHI-CHL-Mult-PROTECTA-LUMINAIRE-MOUNTING-ACCESSORIES-BR-UK-2022

Chalmit®