

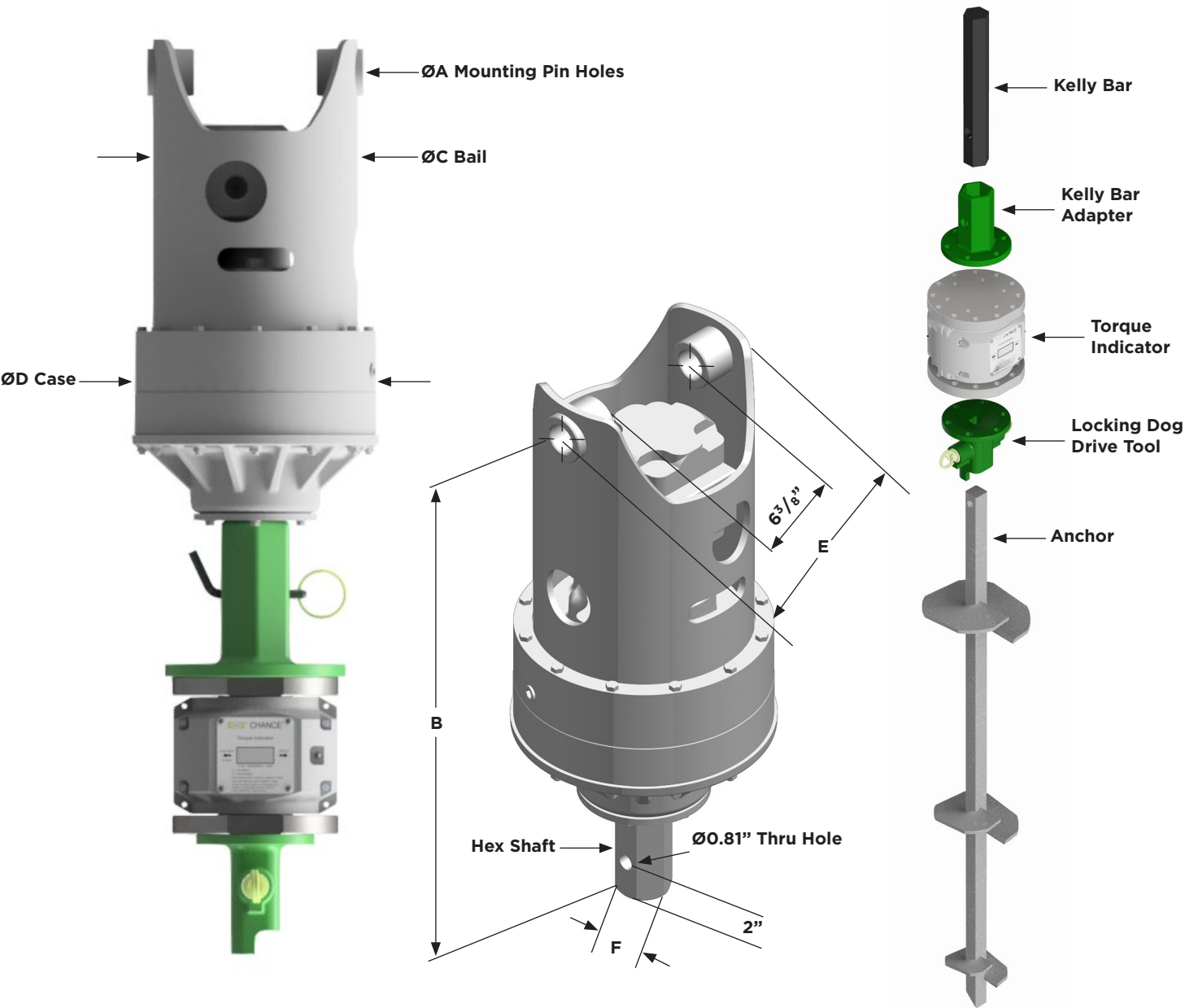
# INSTALLING TOOLS CATALOG

FOR CHANCE®  
HELICAL PILES





# TYPICAL TOOL-STRINGS



## PRODUCT DATA - DRIVE HEADS

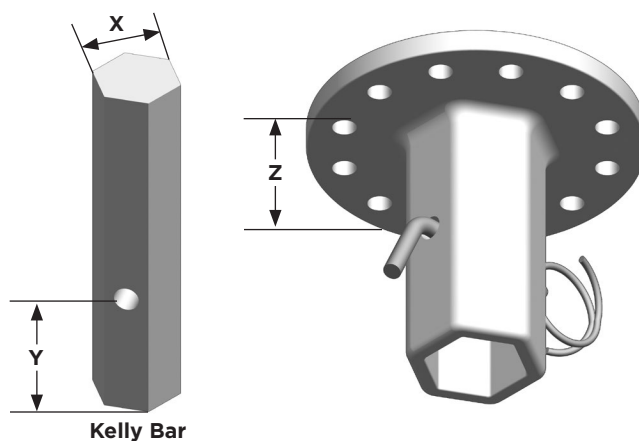
Catalog No.	Running Torque		Flow gpm	Speed rpm	Weight lb (kg)	Dimensions inches (cm)					
	ft-lb	N-m				A	B	C	D	E	F
C3030927	6,500 @ 2,400 psi	8,100 @ 165 BARS	40	36	246 (112)	1.5 (3.8)	29.5 (74.9)	10.7 (27.2)	13.0 (33.0)	11.4 (28.9)	2.5 (6.4)
C3030928	12,000 @ 2,400 psi	15,600 @ 165 BARS	40	19	246 (112)	1.5 (3.8)	29.5 (74.9)	10.7 (27.2)	13.0 (33.0)	11.4 (28.9)	2.5 (6.4)
C3031577 (low)	20,000 @ 2,750 psi	27,000 @ 190 BARS	40	13	510 (230)	1.5 (3.8)	38.5 (97.9)	14.0 (35.6)	14.0 (35.6)	11.4 (28.9)	2.625 (6.7)
C3031577 (high)	8,200 @ 2,750 psi	11,000 @ 190 BARS	40	25	510 (230)	1.5 (3.8)	38.5 (97.9)	14.0 (35.6)	14.0 (35.6)	11.4 (28.9)	2.625 (6.7)

## KELLY BAR ADAPTERS

Selecting the correct Kelly bar adapter is key to building a proper drive string.

### Follow these two easy steps:

1. Remove the auger from the driver and carefully measure the X and Y dimensions of the Kelly bar.
2. Match the shape of the Kelly bar and the X and Y dimensions with the Kelly bar adapter charts below. The Y dimension on the Kelly bar adapter must be equal to or greater than the Y dimension on the intended Kelly bar.



### A Note about Bolt Circles

Chance® anchor installing tools are provided with appropriate bolt circles for the expected service. Torque limitations for the two standard bolt circles are given in the chart. **Never exceed the rated torque of any Chance installing tool.**

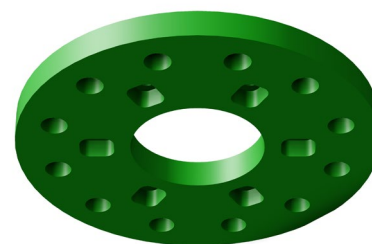
KELLY BAR ADAPTER								
Catalog No.	Bolt Circle Diameter (No. of holes)	Max. Installing Torque ft-lb (Nm)	Kelly Bar Shape	Dimensions			Weight lb (kg)	Bolts
				X	Y	Z		
630013	5-1/4" (6)	10,000 (13 558)	Hex	2"	5"	6-1/8"	10 (4.5)	(6) 1/2" Grade 5 bolts*
630013A	5-1/4" (6)	10,000 (13 558)	Hex	2"	3-1/4"	6-1/8"	10 (4.5)	(6) 1/2" Grade 5 bolts*
630011HD	5-1/4" (6)	10,000 (13 558)	Hex	2-1/2"	4-1/4"	8-1/8"	12 (5.4)	(6) 1/2" Grade 5 bolts*
630012HD	5-1/4" (6)	10,000 (13 558)	Hex	2-5/8"	4-1/4"	8-1/8"	12 (5.4)	(6) 1/2" Grade 5 bolts*
C3030936	7-5/8" (12)	12,000 (16 270)	Hex	2-1/2"	4-3/8"	8-1/4"	23 (10.4)	(12) 5/8" Grade 5 bolts*
C3030937	7-5/8" (12)	15,000 (20 337)	Hex	2-5/8"	4-3/8"	8-1/4"	23 (10.4)	(12) 5/8" Grade 5 bolts*
C3030940	7-5/8" (12)	25,000 (33 895)	Hex	3"	3-1/2"	8"	27 (12.2)	(12) 5/8" Grade 5 bolts*
C3030955	7-5/8" (12)	17,000 (23 049)	Square	2-1/2"	2-1/4"	7"	22 (9.9)	(12) 5/8" Grade 5 bolts*
C3030958	7-5/8" (12)	20,000 (27 116)	Square	3"	3-1/2" & 2-1/16"	7"	23 (10.4)	(12) 5/8" Grade 5 bolts*

\*Hardware package also includes nuts, lockwashers, bent-arm pin with coil lock

## BOLT CIRCLE ADAPTER

The T3030166N is for use between a tool having a 5-1/4" bolt circle and one having a 7-5/8" bolt circle.

BOLT CIRCLE ADAPTER			
Catalog No.	Description	Max. Installing Torque ft-lb (Nm)	Weight lb (kg)
T3030166N	Bolt circle adapter with one 1/2" x 5-1/4" bolt circle and one 5/8" x 7-5/8" bolt circle	10,000 (13 558)	11 (4.9)



T3030166N

# TORQUE INDICATORS

## DIGITAL TORQUE INDICATOR

Measuring torque is the most accurate way to determine the capacity of helical piles and anchors and avoid excessive torsional loading. Using the Chance® Digital Torque Indicator, you can install helical piles and anchors to a pre-determined torque value, which gives a positive indication of pile holding capacity in any soil type.

The Torque Indicator mounts between the Kelly bar adapter and drive tool (or locking dog assembly). Torque can be easily read on the indicator's LCD display and remotely via the app.

- Provides “real time” installation capacity
- Torque displayed on LCD display and transmitted via Bluetooth® to Android and iOS smart devices
- Multiple Bluetooth display devices can be linked to torque indicator
- Torque Indicator Remote Pro app allows torque readings to be sent via email to be downloaded
- Toggle between foot-pounds and Newton-meters at the push of a button
- Accuracy: ±500ft-lb at any reading
- No shear pins to replace
- Powered by two standard 9V batteries
- Solid one-piece spool design to withstand bending loads.
- Top and bottom flange each provide six holes tapped ½”- 13 on a 5-¼” bolt circles and twelve holes tapped ⅝”- 11 on a 7-⅝” bolt circles for mounting options with various Kelly bar adapter and drive tool sizes
- Certificate of Calibration supplied with each new unit in case
- Supplied with Twelve (12) 1/2 - 13 UNC - 2A bolts, 1 3/4” long, grade 5, with lock washers and Twenty-four (24) 5/8 - 11 UNC - 2A bolts, 2” long, grade 5, with lock washers.
- No cell signal or wi-fi required to operate, as long as app is installed on mobile device at the jobsite.



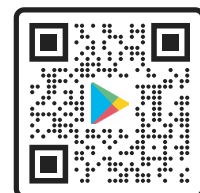
## DIGITAL TORQUE INDICATOR

Catalog No.	Torque Rating ft-lb (Nm)	Operational Temperature
C3031836	30,000 (40 675)	-22° to 158° F (-30° to 70°C)



Download free Torque Indicator Remote Pro App

[Apple App Store](#) or [Google Play Store](#)



### SHEAR PIN TORQUE LIMITER

Catalog Number C3030044 for installing torques up to 10,000 ft-lb

#### Advantages

- Protection for anchors and installing tools by disconnecting the power when the installing torque reaches a preselected level
- Usable in very rocky soil
- Durable-does not require special storage or handling

SHEAR PIN TORQUE LIMITER		
Catalog No.	Description	Weight lb (kg)
C3030044	Shear Pin Torque Limiter	54 (24.5)
*C3030045	Carton of Shear Pins (Approx. 1700 pins)	50 (22.7)
*T3031420	Box of Shear Pins (Approx. 510 pins)	15 (6.8)

*\*Each shear pin provides 500 ft-lb of torque.*



**Top and bottom each have six holes  
tapped ½" - 13 on a 5-¼" bolt circle.**

# DRIVE TOOLS

## SQUARE SHAFT (SS) DRIVE TOOLS

These tools include our proprietary alignment window that helps reduce chance of finger pinch when anchor is inserted into tool. Alignment window also makes it faster and easier to line up the anchor and anchor tool.

These drive tools require the appropriate Kelly bar adapter (page 3). Each comes with bolts, nuts and lock washers.

SS DRIVE TOOLS					
Catalog No.	SS Pile Series Tool	Max. Installing Torque ft-lb (Nm)	Bolt Circle, Holes	Pile Attachment Method	Weight lb (kg)
C3031502	SS125	10,000 (13 558)	5-1/4", (6) 1/2" holes	Bent Arm Pin with Coil Lock (Provided)	10 (4.5)
639001	SS5/SS150	10,000 (13 558)	5-1/4", (6) 1/2" holes	Bent Arm Pin with Coil Lock (Provided)	8 (3.6)
C3031650	SS5, SS150	10,000 (13 558)	5-1/4", (6) 1/2" holes	Integral Locking Dogs	10 (4.5)
C3031645	SS175	10,500 (13 558)	7-5/8", (12) 5/8" holes	Integral Locking Dogs	21 (9.5)
C3030195*	SS175	10,500 (13 558)	7-5/8", (12) 5/8" holes	Bent Arm Pin with Coil Lock (Provided)	18 (8.2)
C3030201*	SS200	16,000 (13 558)	7-5/8", (12) 5/8" holes	Bent Arm Pin with Coil Lock (Provided)	30 (13.6)
C3030202*	SS225	21,000 (13 558)	7-5/8", (12) 5/8" holes	Bent Arm Pin with Coil Lock (Provided)	30 (13.6)

\*Coupling to a Kelly bar adapter with a 5-1/4" bolt circle requires use of T3030166N adapter and limits tool's maximum torque rating to 10,000 ft-lb.

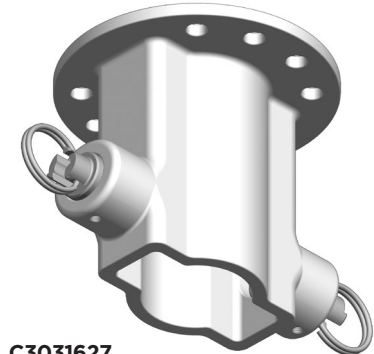


### ROUND SHAFT (RS) DRIVE TOOLS

Each drive tool comes with one set of pins, bolts, nuts, and lock washers.

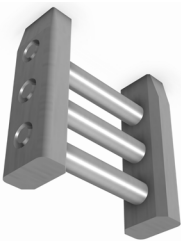
ROUND SHAFT (RS) DRIVE TOOLS				
Catalog No.	RS Pile Series Tool	Max. Installing Torque ft-lb (Nm)	Bolt Circle, Holes	Weight lb (kg)
C3031626	RS2875	13,000 (17,626)	7-5/8", (8) 5/8" holes; with pin assembly	44 (19.9)
C3031624	RS2875	N/A	RS2875 pin assembly only for C3031626	8 (3.6)
C3031754	RS2875	10,000 (13 558)	5-1/4", (4) 1/2" holes; with pin assembly	23 (10.4)
C3031753	RS2875	N/A	RS2875 pin assembly only for C3031754	4 (1.8)
C3031627	RS3500	13,000 (17 626)	7-5/8", (8) 5/8" holes with pin assembly	46 (20.8)
C3031620	RS3500	N/A	RS3500 pin assembly only	6 (2.7)
C3031605	RS4500	25,000 (33 895)	7-5/8", (8) 5/8" holes; with pin assembly	58 (26.3)
C3031606	RS4500	N/A	RS4500 two-pin set only	8 (3.6)

Drive Tool

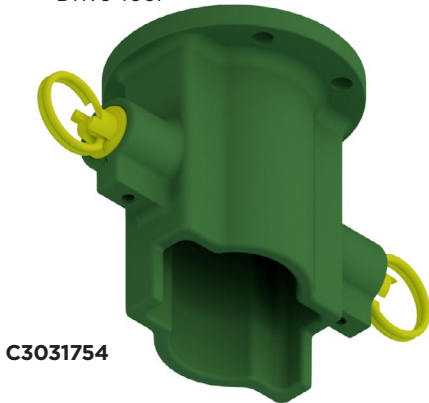


C3031627

Pin Assembly

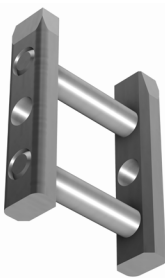


Drive Tool



C3031754

Pin Assembly



C3031605

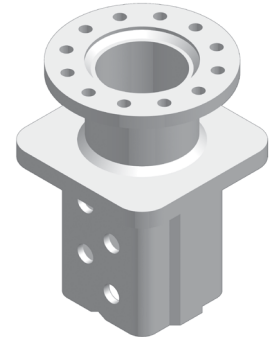


## LARGE DIAMETER ROUND SHAFT (RS) DRIVE TOOLS

Each drive tool comes with one set of pins, bolts, nuts, and lock washers.

### RS6625 AND RS8625 DRIVE TOOLS

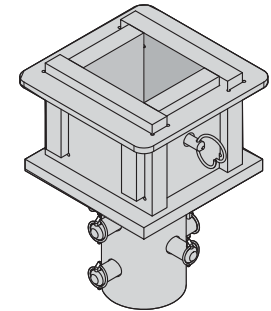
Catalog No.	RS Pile Series Tool	Max. Installing Torque ft-lb (Nm)	Bolt Circle, Holes	Coupling	Weight lb (kg)
C3031521	RS6625	30,000 (40 675)	7-5/8", (12) 5/8" holes	Box	90 (40.8)
C3031508	RS8625	30,000 (40 675)	7-5/8", (12) 5/8" holes	Box	96 (43.5)
C3031720	RS6625	30,000 (40 675)	8-5/8", (12) 5/8" holes	Plate	95 (43.1)
C3031819	RS6625	30,000 (40 675)	7-5/8", (12) 5/8" holes	Plate	69 (31.3)
C3031636	RS8625	30,000 (40 675)	8-5/8", (12) 5/8" holes	Plate	95 (43.1)
C3031800	RS8625	30,000 (40 675)	7-5/8", (12) 5/8" holes	Plate	303 (137.4)



C3031521

### RS5500 AND RS7000 DRIVE TOOLS

Catalog No.	RS Pile Series Tool	Max. Installing Torque ft-lb (Nm)	Kelly Bar Size	Weight lb (kg)
C3031920	RS5500	90,000 (122 024)	4 inch (100 mm) SQUARE	128.3 (58.2)
C3031921	RS5500	90,000 (122 024)	5.1 inch (130 mm) SQUARE	140.6 (63.8)
C3031922	RS7000	90,000 (122 024)	4 inch (100 mm) SQUARE	128.5 (58.3)
C3031923	RS7000	90,000 (122 024)	5.1 inch (130 mm) SQUARE	140.9 (63.9)
C3031924	RS7000	200,000 (271164)	6 inch (150 mm) SQUARE	197.4 (89.5)



C3031920

## BUMPER POST INSTALLATION TOOLS

Tools are available which bolt directly to Chance Kelly bar adapters or which can be used with Chance locking dog assembly.

Order C3030737 for Kelly bar attachment or C3030739 for use with locking dog assembly. Bumper Post is inserted into drive tool and held by the provided bent-arm pin. 8,000 ft-lb (10 847 Nm) typical working torque.



C3030737



C3030739

### BUMPER POST INSTALLATION TOOLS

Catalog No.	Description
C3030737	Installation Tool, Kelly Bar Attachment
C3030739	Installation Tool, Locking Dog Assembly Attachment



UNIVERSAL TOOLS - BASE PLATE FOUNDATIONS

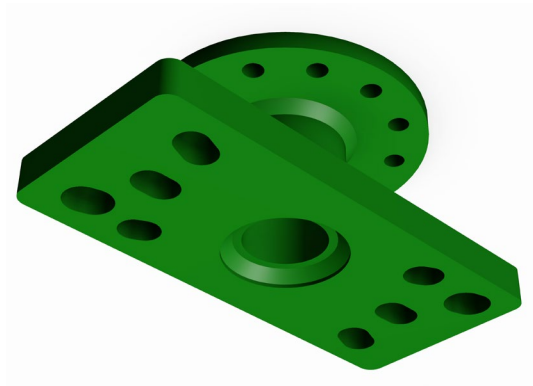
These tools fit foundation anchors with 9" thru 13-1/2" bolt circles.  
C3030139 connects direct to a Kelly bar adapter with (6) 1/2" furnished bolts.  
C3030684 includes (12) 5/8" bolts.

UNIVERSAL TOOLS			
Catalog No.	Bolt Circle, Holes	Max. Installing Torque ft-lb (Nm)	Weight lb (kg)
C3030139	5-1/4", (6) tapped holes	10,000 (13 558)	18 (8.2)
C3030684*	7-5/8", (12) drilled holes	20,000 (27 116)	49 (22.2)

*\* Coupling C3030684 to a Kelly bar adapter with a 5-1/4" bolt circle requires use of T303166N adapter and limits tool's maximum torque rating to 10,000 ft-lb.*



C3030139\*

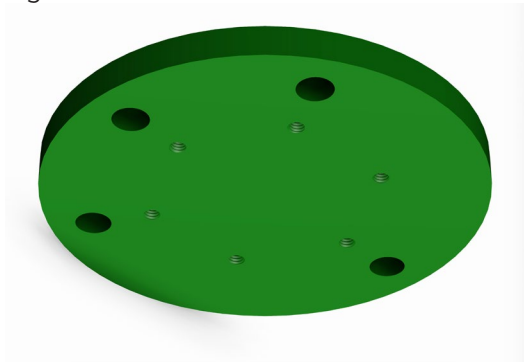


C3030684\*\*

DECORATIVE LIGHTING FOUNDATION DRIVE TOOL

This 10" diameter drive plate fits the 8" bolt circle of decorative lighting foundations.  
Connects direct to a Kelly bar adapter with (6) 1/2" furnished bolts.

DECORATIVE LIGHTING FOUNDATION TOOL		
Catalog No.	Bolt Circle, Holes	Weight lb (kg)
T3030247	5-1/4", (6) 1/2" tapped holes	16 (7.3)



T3030247

*\*Maximum torque rating 10,000 ft-lb*

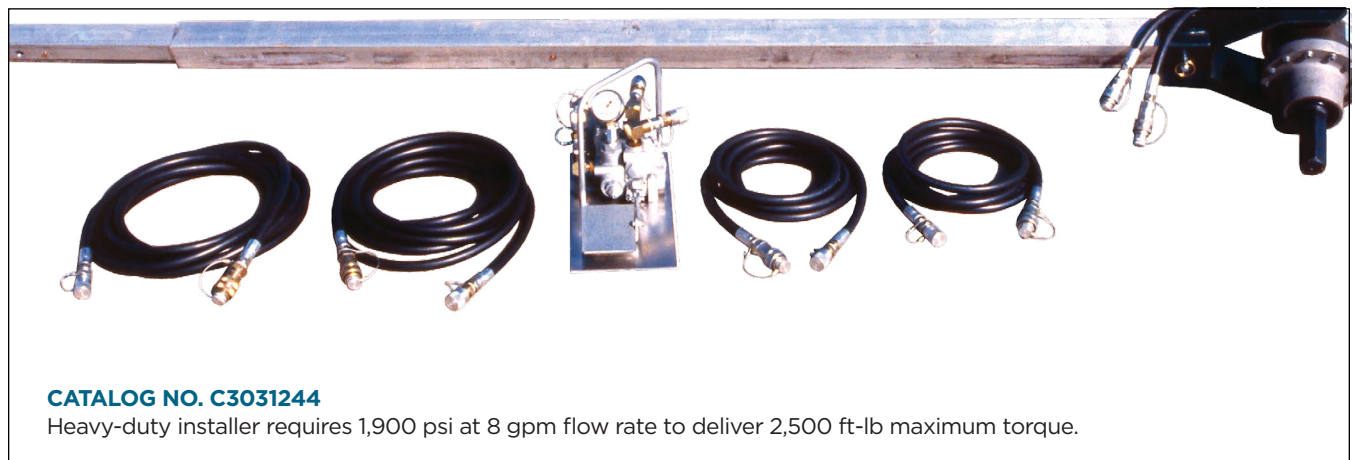
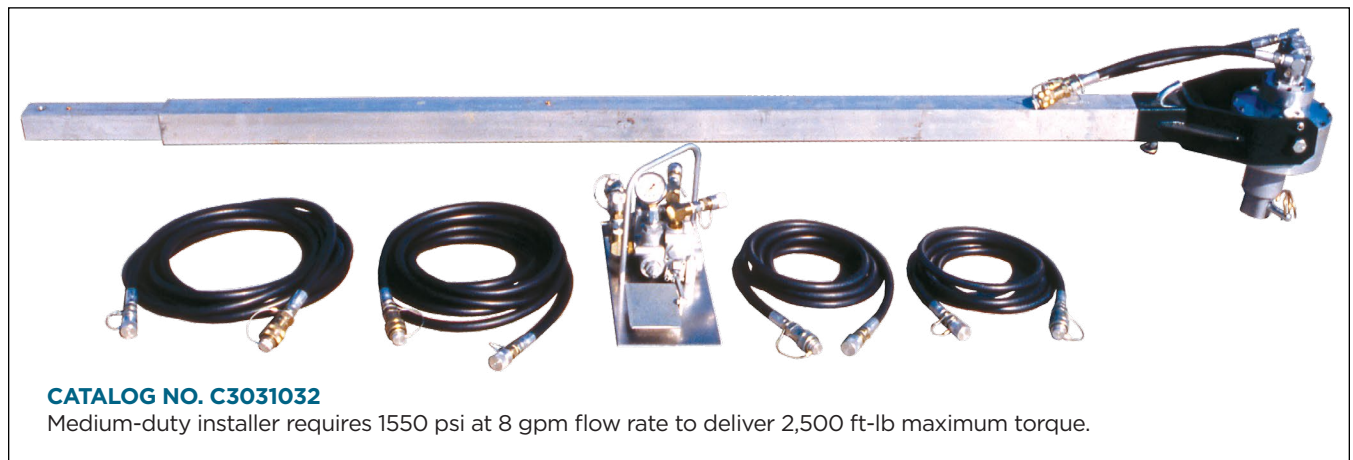
## PORTABLE ANCHOR INSTALLERS

### 2,500 FT-LB TORQUE CAPACITY HYDRAULIC POWER DRIVE FOR SMALL FOUNDATIONS

#### Economical manual operation and portability for remote sites (common anchor installations)

For most shaft-driven guy anchors and smaller screw foundations, these compact drivers get into areas where large equipment cannot go or is impractical. Operator does not need to resist the torque generated by anchor installation. Counter-torque transmits through a torque bar from the drive head to the earth or other restraint. This frees the operator for the task of guiding the anchor path.

Built-in bypass valve limits output to 2,500 ft-lb maximum. Two-way foot pedal gives operator direct control over drive and reverse directions, and hoses (two 12 ft and two 25 ft) come with quick couplers for all connections from power supply to foot control to drive head. Pivoting drive-head yoke connects with bent-arm pin to square-tubular torque bar which telescopes from 8 feet to 10 feet as needed.



## PORTABLE ANCHOR INSTALLERS

		MEDIUM DUTY †	HEAVY DUTY ‡
GEAR CASE (INCLUDES ALL ITEMS)		C3031032	C3031244
REPLACEMENT PARTS	*Hydraulic Control Valve	C3031031	C3031247
	Two 25-ft Hydraulic Hoses	C4176121 (each)	
	*Hydraulic Drive Head	C3031180	C3031233
	Yoke Assembly	E3030680	
	*Two 12-ft Hydraulic Hoses	E3030876 (pair)	E3031253 (pair)
	Square Torque Bar Assembly	E3031041	

\*Note hydraulic components are not interchangeable between C3031032 and C3031244.

### † MEDIUM DUTY

Grease filled gear case. Catalog number C3031032 includes all items/parts. Each item also may be ordered by separate number found on chart.

Output shaft is 1-1/2" square socket. Requires C3031230 and flanged drive tool (order separately) to install anchors other than 1-1/2" square or 1-1/4" round shaft.

Medium-duty installer requires 1550 psi at 8 gpm flow rate to deliver 2,500 ft-lb maximum torque.

### ‡ HEAVY DUTY

Sealed oil-filled gear case. Catalog C3031244 above includes all items/parts. Each item also may be ordered by separate number found on chart.

Output shaft is 2" Hex. - requires Kelly bar adapter 630013 and flanged drive tool (order separately) to install all anchors.

Heavy-duty installer requires 1,900 psi at 8 gpm flow rate to deliver 2,500 ft-lb maximum torque.

## OPTIONAL HYDRAULIC POWER UNIT C3031201

For easy wheeling to worksite, hydraulic drive head and foot control secure by rubber strap included to angle braces atop the cart frame and hoses ride on handles.

### Features:

- Cart-mounted on 5/8" diameter axle with two 4.8 x 8 inflatable (30 psi) tires
- 27.25" wide x 34.5" high x 36" long
- Shipping weight with oil: 275 lb

### Hydraulic Pump with Fan Cooling System:

- Typical output pressure: 2250 psi
- Pump displacement: 8 gpm @ 3400 rpm
- Reservoir capacity: 5 gallons US (shipping cap and vented fill cap provided)

### Gasoline Engine System:

- 16 hp Briggs & Stratton
- Industrial/Commercial Model 326437, Type 2527
- 12-Volt pushbutton start, 3600 rpm (maximum)

Operating instructions are included with anchor installer and hydraulic power unit.



C3031201





**[www.chancefoundationsolutions.com](http://www.chancefoundationsolutions.com)**

**©2024 Hubbell Incorporated. All rights reserved.**

Hubbell, the Hubbell logo and its affiliate logos are registered trademarks owned by Hubbell Incorporated. All third-party trademarks are property of their respective owners. Because Hubbell has a policy of continuous product improvement, we reserve the right to change design and specifications without notice.

Printed in the U.S.A. | CA04124E