

CABINET OPTIONS AND DESIGNATORS

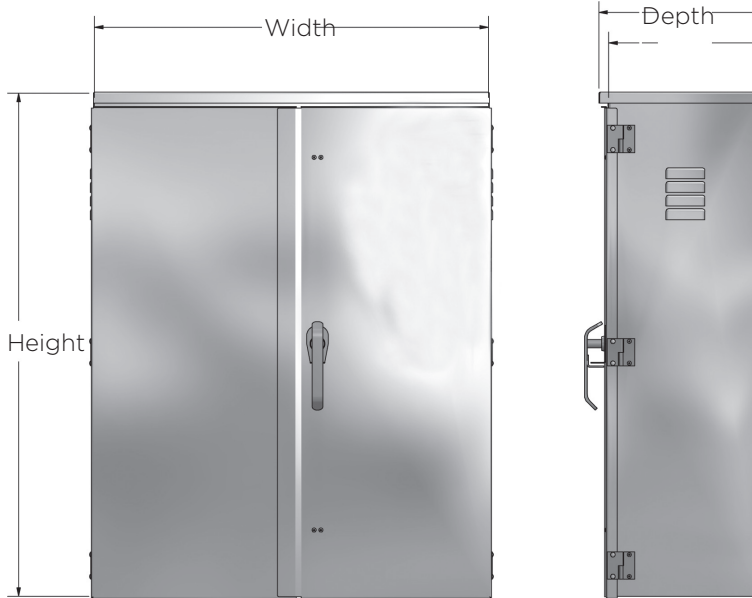
<u>Hinges:</u>	~Stainless steel lift off
<u>Nuts and Bolts:</u>	~ Stainless steel
<u>Hardware:</u>	~ Handles and Corbin locks are stainless steel or zinc plated
<u>Windows:</u>	~ Lexan ©
<u>Backboards:</u>	~ 3/4" exterior grade plywood (Treated) ~ Can be easily removed for shop wiring
<u>Ground Lug:</u> (standard)	~AL-CU lug furnished ~ will accommodate 2-12 conductors
<u>Hub Opening:</u>	~Standard sizes from 1 to 1.25 inches available

Specifications subject to change without notice.

CODE LETTERS

A	Aluminum
B	Barfield
CT	Current Transformer
DD	Double Door
DH	Drop Hinge
F	Fan
FB	Front and back door with 3-point locking for seal or padlocking with stainless steel lift-off hinges
FSC	Flush Cover
SC	Gasket Screw Cover
LAGSC	Lag Screw
LW	Lexan© Windows in demand reset cover (additional cost)
RC	Removable Cover
SC	Screw Cover
SD	Single swinging door with heavy-duty pull-down catches for seal or padlocking or on request a 3-point locking handle for seal or padlocking with stainless steel lift-off hinges
SP	Single Phase
TB	Terminal Box
TBB	Test Block Bridge (BA413TBB) for Meter Test Switch
THB	Tru-Bolt
TP	Three Phase
VT	Voltage Transformer

OUTDOOR METER, INSTRUMENT TRANSFER & SUBSTATION EQUIPMENT ENCLOSURES, NEMA 3R



MOUNTING BOARD

3/4" exterior grade treated plywood, standard. Add "-AP" for aluminum back-plate at extra charge.

DOORS

Standard double swinging doors with stainless steel lift-off hinges, 3-point locking handle. Doors have brackets, which hold them in the open position.

MATERIAL

.090 aluminum, .125 on request (add "-H").

HUBS

When requested at extra charge.

HUB1 - 1 inch Diameter

HUB125 - 1.25 inch diameter

HUB15 - 1.5 inch diameter

HUB2 - 2 inch diameter

LOUVER

4" louvers with screens (standard).

GROUND LUG

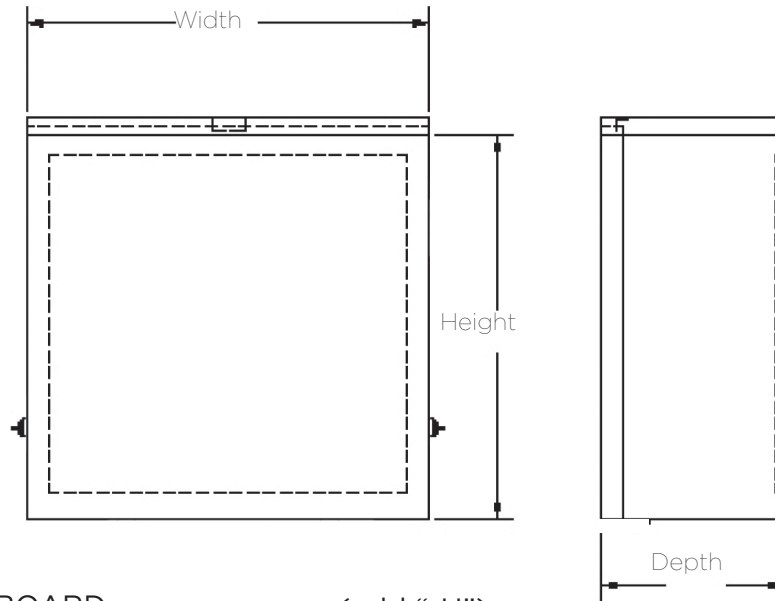
Al-Cu lug furnished (standard).

Special sizes and modifications available upon request.

Catalog Number	Pkg	Depth	Width	Height	Board Size (W x H)
BA123024DD	1	12"	30"	24"	27" x 21"
BA123036DD	1	12"	30"	36"	27" x 33"
BA123238DD	1	12"	32"	38"	29" x 35"
BA123036SD	1	13"	20"	36"	17" x 33"
BA133240DD	1	13"	32"	40"	29" x 37"
BA133636DD	1	13"	36"	36"	32" x 32"

Standard 3/4" plywood backboards. Add "AP for aluminum plate.

CT ENCLOSURE, NEMA 3R



MOUNTING BOARD

3/4" exterior grade treated plywood, standard. Add "-AP" for aluminum back-plate at extra charge.

COVER

The cover is removable and has provisions for sealing and locking. Swinging doors have stainless steel lift-off handle. Penta-head stainless steel bolts for security.

CUSTOM BUILT CT ENCLOSURES

MATERIAL

.090 aluminum, .125 on request

(add "-H").

HUBS

When requested at extra charge.

HUB1 - 1 inch diameter

HUB125 - 1.25 inch diameter

HUB15 - 1.5 inch diameter

HUB2 - 2 inch diameter

GROUND LUG

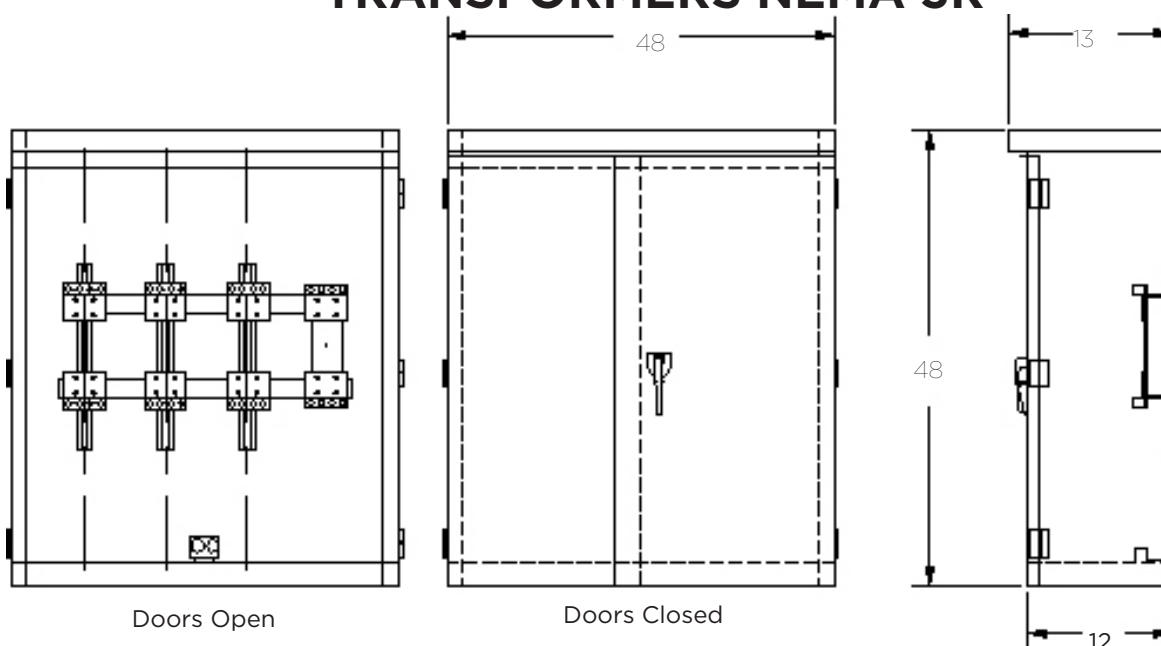
Al-Cu lug furnished. Will accommodate #2-12 conductors.

Vents are designed to meet ANSI C57.12.28-1988 for pad mounted equipment enclosure integrity.

Special sizes and modifications available upon request.

Catalog Number	Pkg	Depth	Width	Height	Board Size (W x H)
BACT102424RC	1	10"	24"	24"	21" x 21"
BACT122424RC	1	12"	24"	24"	21" x 21"
BACT123636RC	1	12"	36"	36"	32" x 32"
BACT133232RC	1	13"	32"	32"	29" x 29"
BACT133636RC	1	13"	36"	36"	32" x 32"

CURRENT TRANSFORMER ENCLOSURES FOR BAR TYPE CURRENT TRANSFORMERS NEMA 3R



MOUNTING DEVICE

6 500MCM-4 hole connectors mounted on fiberglass reinforced thermoset polyester. The fiberglass is mounted on H-BAR EXTRUSION and is adjustable.

DOOR

Standard swinging door with stainless steel lift off hinges and stainless steel 3-point locking handle. Doors have brackets, which hold them in the open position.

MATERIAL

.090 aluminum, unpainted (standard). Optional powder coat at extra charge (contact your rep). .125 material upon request add "-H".

GROUND LUG

I-DLA-250

(standard)

LOUVER (optional)

3 sets of 4" louvers with screens not shown on picture.

HUB

When requested at extra charge.

HUB1 - 1 inch diameter

HUB125 - 1.25 inch diameter

HUB15 - 1.5 inch diameter

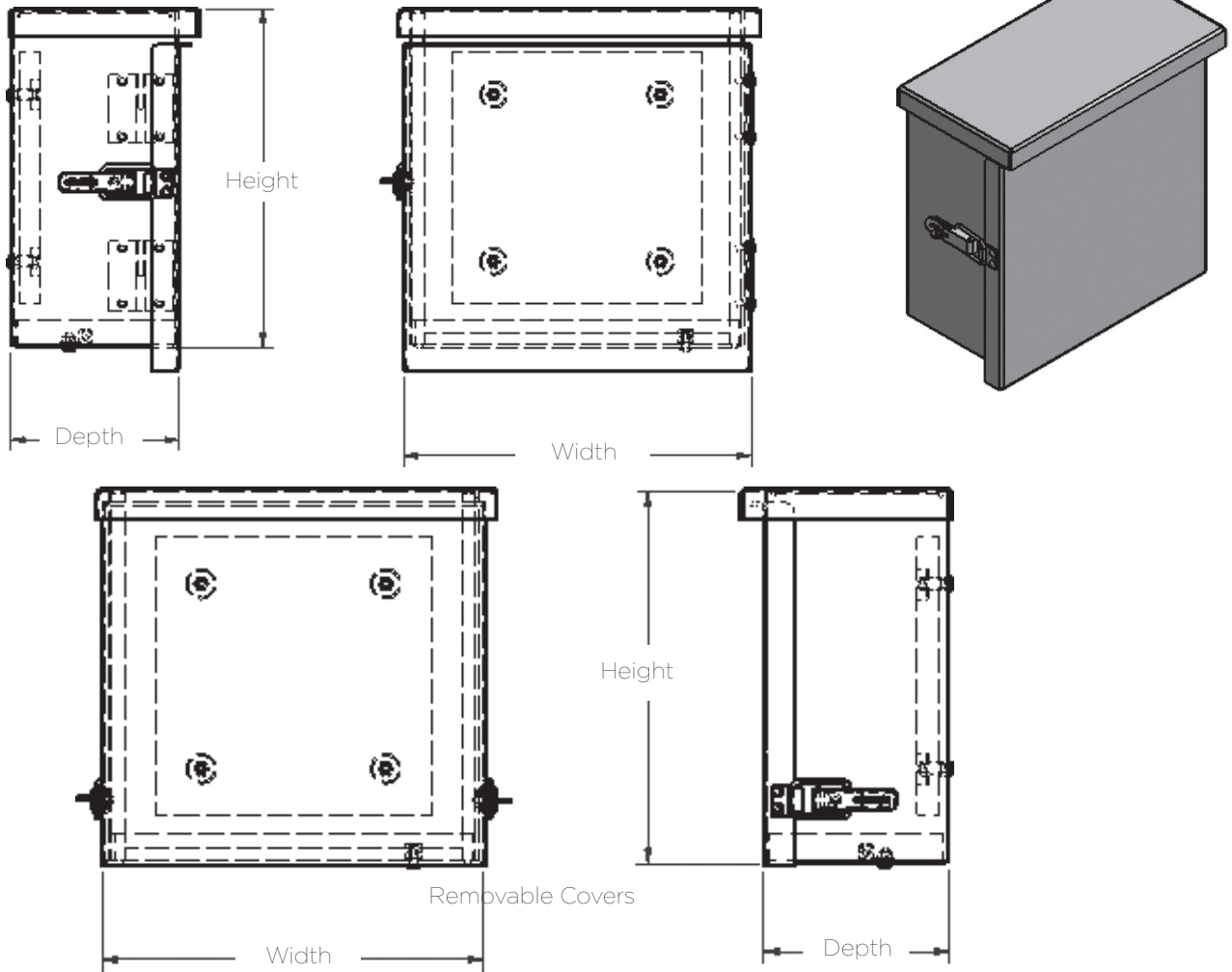
HUB2 - 2 inch diameter

Special sizes and modifications available upon request.

Catalog Number	Depth	Width	Height	No. of Conductors per Phase
BACT124848-4LUG	12"	48"	48"	4 (500MCM - 10)
BACT123636DD-4LUG	12"	36"	36"	4 (500MCM - 10)
BACT133636DD-4LUG	13"	36"	36"	4 (500MCM - 10)
BACT174848DD-6LUG	17"	48"	48"	6 (500MCM - 10)
BACT206060DD-4LUG	20"	60"	60"	4 (500MCM - 10)

TERMINAL AND JUNCTION BOXES NEMA 3R

Drop Hinge



Standard size or special size available upon request

Catalog Number	Depth	Width	Height
BAT488RC	4"	8"	8"
BAT4812RC	4"	8"	12"
BAT41212RC	4"	12"	12"
BAT61212RC	6"	12"	12"
BAT61818RC	6"	18"	18"
BAT4812DH	4"	8"	12"
BAT41212DH	4"	12"	12"
BAT61212DH	6"	12"	12"
BAT61818DH	6"	18"	18"

GROUND LUG

Al-Cu lug furnished (standard).
Will accommodate #2-12
conductors.

MOUNTING BOARD

3/4" exterior grade treated plywood, standard. Add "-AP" for aluminum back-plate at extra charge.

MATERIAL

3/4" exterior grade plywood.
.125 material upon request add
"-H".

COVERS

(RC) Removable or (DH) drop hinges with latch for sealing.

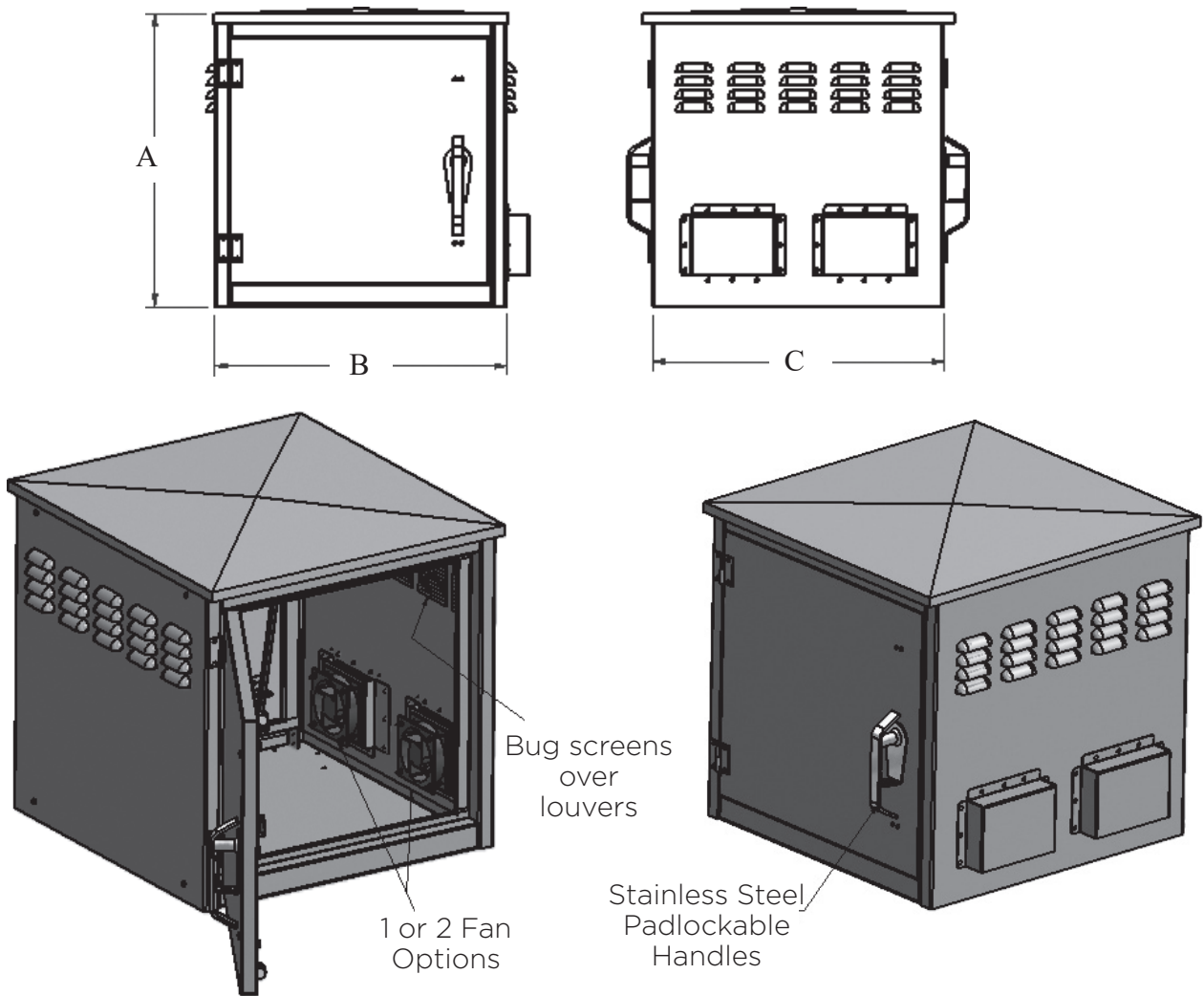
ALUMINUM TURTLE SYSTEM ENCLOSURE

- Cabinet constructed from .090 aluminum.
- Louvers with screens on top of each side for ventilation.
- Perforations at bottom center of outside with cover and fan mount.
- 3-point stainless steel latching mechanism will accept padlock on each door.
- Stainless steel hinges.
- Ground lug provided in cabinet bottom, (standard).
- Four 0.50/0.75 and two 01.125 knockouts provided in cabinet bottom.
- Vent fan with power cord and air filter included, optional second fan available add “- 2F”.

Catalog Numbers
BATS282828FBSD-1F
BATS282828FBSD-1F-F
BATS282828FBSD-1F-L12
BATS282828FBSD-1F-L30
BATS282828FBSD-1F-L36
BATS282828FBSD-1F-P
BATS282828FBSD-2F
BATS282828FBSD-2F-F
BATS282828FBSD-2F-L12
BATS282828FBSD-2F-P
BATS313128FBSD-1F
BATS313128FBSD-1F-F
BATS313128FBSD-1F-L12
BATS313128FBSD-1F-P
BATS313128FBSD-2F
BATS313128FBSD-2F-F
BATS313128FBSD-2F-L36
BATS313128FBSD-2F-P



TURTLE CABINET BASE CABINET

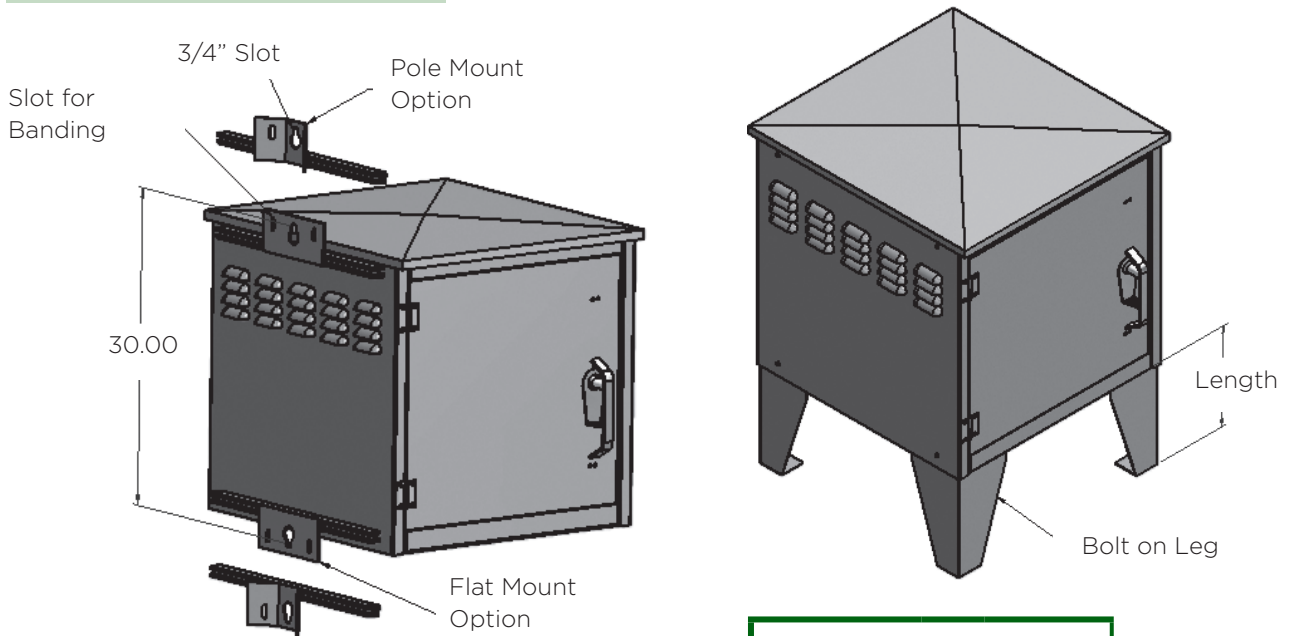


Catalog Number			Dimensions		
Base Cabinet	1 or 2 Fans	-	A	B	C
BATS282828FBSD	-1F	-	28	28	28
BATS313128FBSD	-2F	-	31	31	28
BATS282828FBSD	-1F	-	28	28	28
BATS313128FBSD	-2F	-	31	31	28

Example: BATS313128SDFB-2F
(31 x 31 x 28 Cabinet with 2 Fans)

TURTLE CABINET MOUNTING KITS

Ordered with cabinet



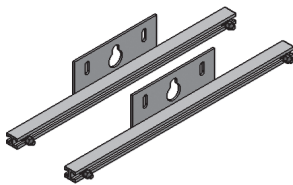
Turtle Cabinet Mount		
Suffix	-	Style
F	-	Flat
P	-	Pole

Example:
BATS313128SDFB-2F -P
(31 x 31 x 28 Cabinet with 2 Fans and Pole Mount)

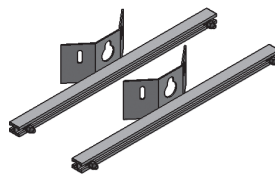
Turtle Cabinet Legs		
Suffix	-	Length
L12	-	12
L24	-	24
L30	-	30
L36	-	36

Example:
BATS313128SDFB-2F -L24
(31 x 31 x 28 Cabinet with 2 Fans and 12" Legs)

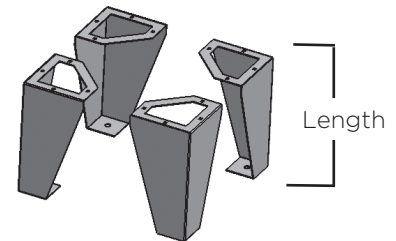
Ordered seperately



Flat Mount Kit
BA3FMBH-22

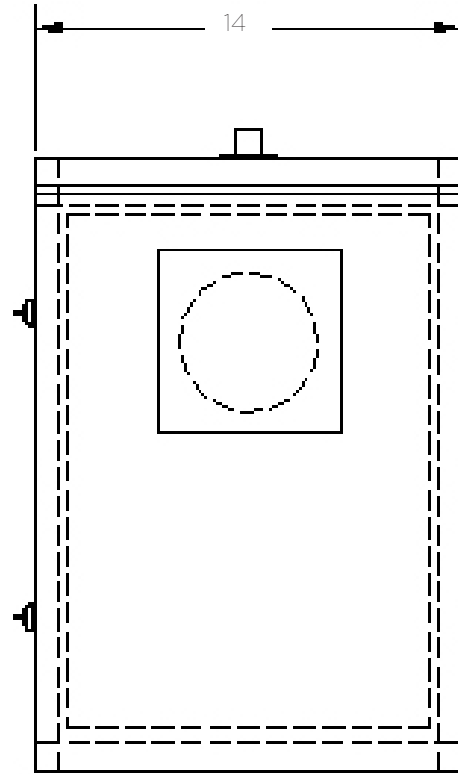


Pole Mount Kit
BA3PMBH-22

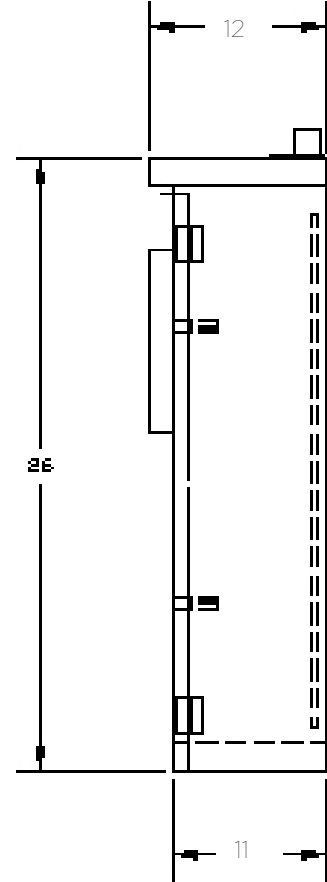


Turtle Cabinet Leg Kits		
Catalog Number	-	Length
BATS LEG 12 SET	-	12
BATS LEG 24 SET	-	24
BATS LEG 30 SET	-	30
BATS LEG 36 SET	-	36

SINGLE POSITION "A" BASE METER ENCLOSURE



NEMA 3R



MOUNTING BOARD

3/4" exterior grade plywood (standard) or aluminum, add "-AP".

POLE HANGER

3 aluminum brackets furnished, BA-103 (standard).

HUB

When requested at extra charge.

HUB1 - 1 inch diameter

HUB125 - 1.25 inch diameter

HUB15 - 1.5 inch diameter

HUB2 - 2 inch diameter

MATERIAL

.063 thickness

Aluminum, unpainted (standard).

GROUND LUG

AL-CU lug furnished, #2-12 conductors (standard).

WINDOW ACCESSORIES

7 1/2" round opening with aluminum demand reset cover.

Catalog Number	PKG	Depth	Width	Height	Board Size (W X H)
BA111426DWSD	1	11"	14"	26"	11" x 21"

FIBER OPTIC ENCLOSURE

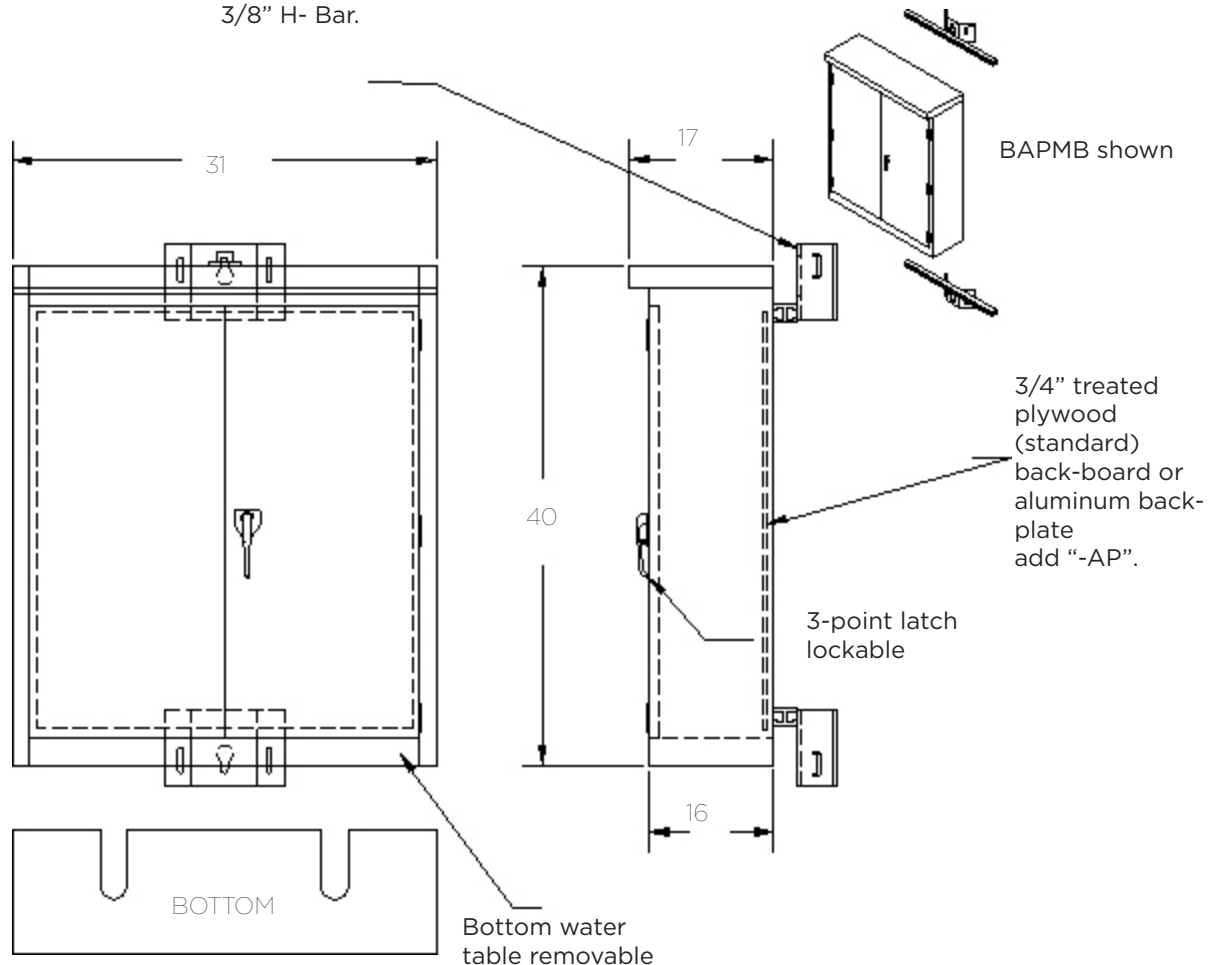
.090 aluminum cabinet.
Lifting eyes provided.
Stainless steel hinges.
Stainless steel padlock handle.
Double doors.
Unpainted (standard).

Mounting brackets sold separately.

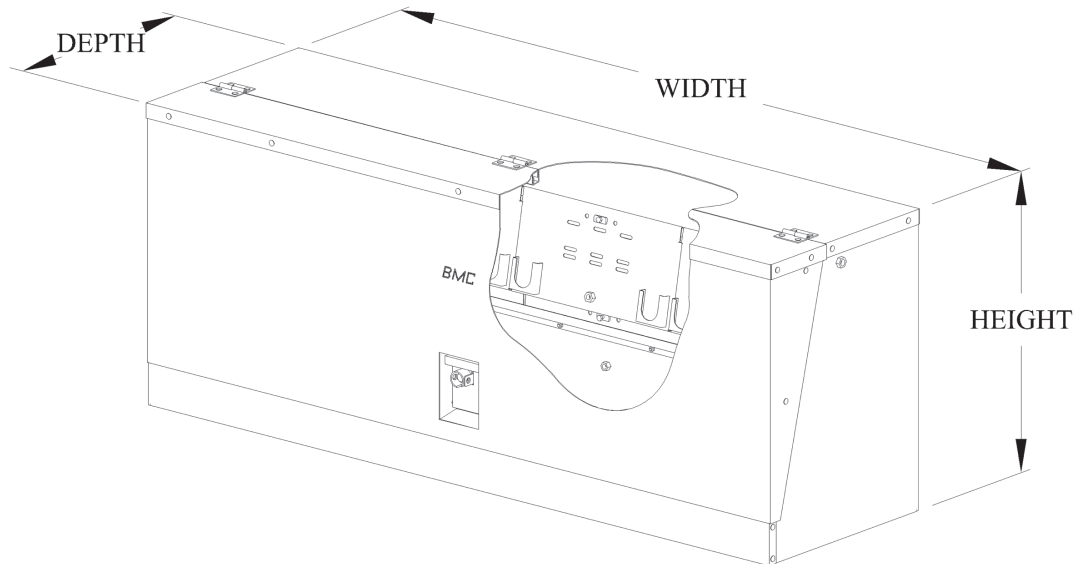
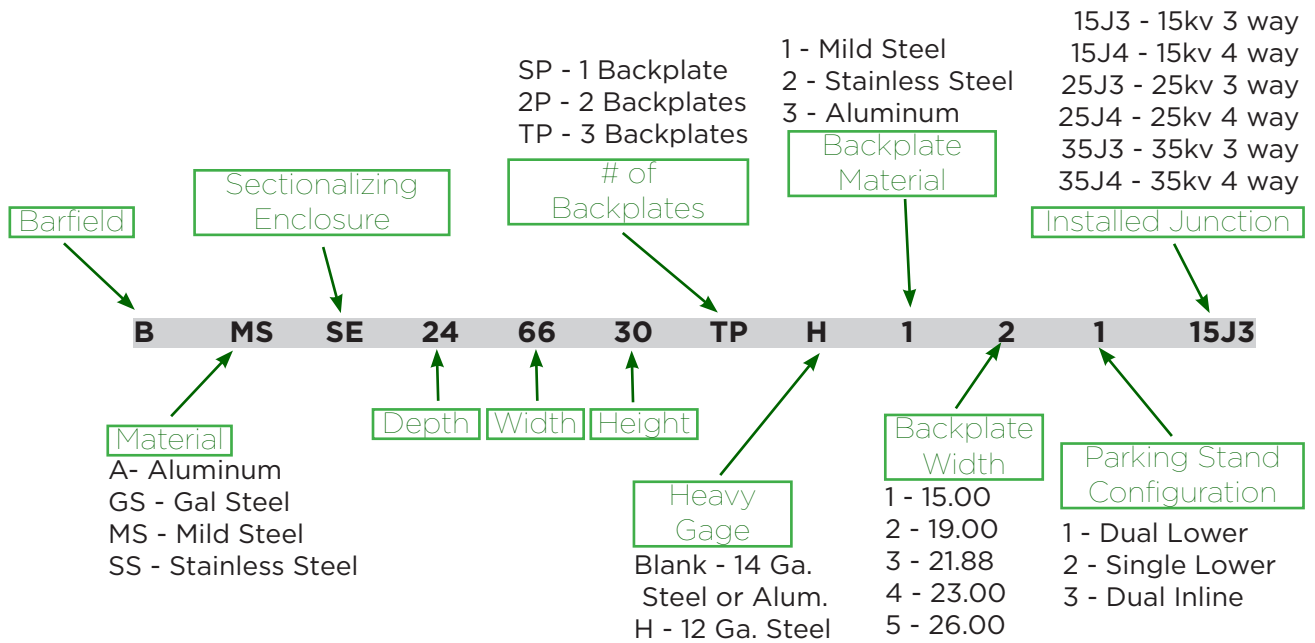


Catalog Number	Depth	Width	Height
BA163148FMDD	16"	31"	48"

BAPMBH or BAFMBH with
3/8" H- Bar.



SECTIONALIZING ENCLOSURES



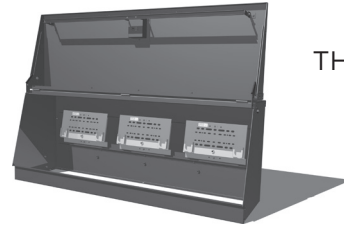
SECTIONALIZING ENCLOSURES

Rated 200A or 600A

SINGLE PHASE



THREE PHASE



- Heavy-Duty channelized construction.
- Standard cabinet is fabricated from 14 or 12 gauge mild steel.
Also available in galvanized steel (replace the “M” with “G”)
- Also available in stainless steel or aluminum (contact rep).
- Heavy duty wind locks are standard on all models.
- Custom sizes and special junction mounting brackets available.
- Stainless steel hinge barrels, pins, padlock hasp, and exterior hardware.
- Ground nut provision for each phase. Units shipped completely assembled (except junctions).
- Oven cured green powder coat polyester finish exceeds ANSI standard C57.12.28.
- Standard paint color: Munsell dark green. Other colors available.

Provides a safe and convenient primary cable terminating, sectionalizing, tapping, and switching point for underground distribution systems.

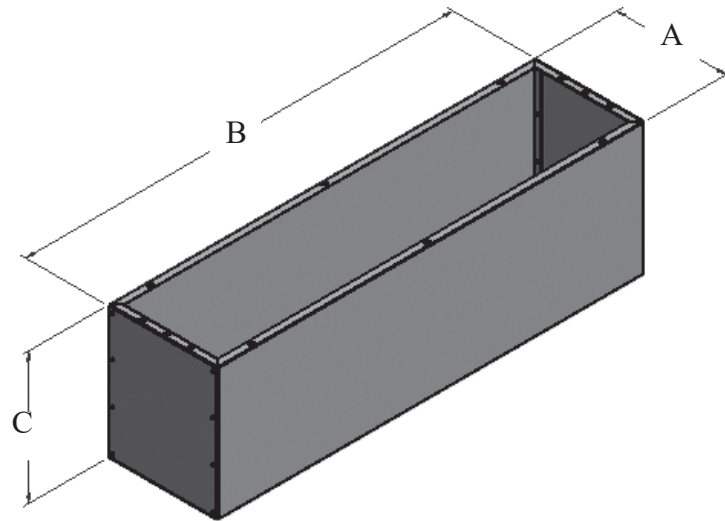
SINGLE PHASE

Catalog Number	Depth	Width	Height	Usable Junctions	Gauge
BMSSE182630SP-121	18"	26"	30"	3 or 4 - WAY	14
BMSSE183030SP-121	18"	30"	30"	3 or 4 - WAY	14
BMSSE223030SP-121	22"	30"	30"	3 or 4 - WAY	14
BMSSE223030SP-H-121	22"	30"	30"	3 or 4 - WAY	12
BMSSE223630SP-H-121	22"	36"	30"	3 or 4 - WAY	12

THREE PHASE

Catalog Number	Depth	Width	Height	Usable Junctions	Gauge
BMSSE184830TP-112	18"	48"	30"	3 or 4 - WAY	14
BMSSE186030TP-H-121	18"	60"	30"	3 or 4 - WAY	12
BMSSE224830TP-H-121	22"	48"	30"	3 or 4 - WAY	12
BMSSE226030TP-H-121	22"	60"	30"	3 or 4 - WAY	12
BMSSE226630TP-H-121	22"	66"	30"	3 or 4 - WAY	12
BMSSE228430TP-H-152	22"	84"	30"	3 or 4 - WAY	12

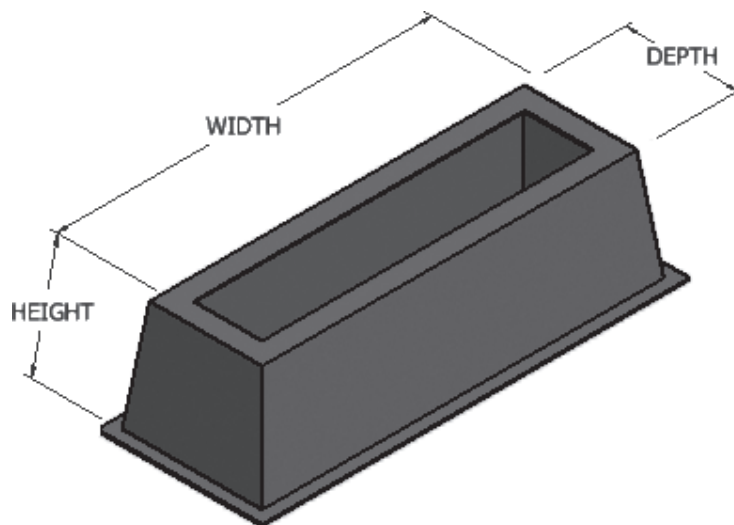
PRIMARY SECTIONALIZING ENCLOSURE BURIAL SLEEVE



Catalog Number	Fits Cabinet Number	Depth A	Width B	Height C
BGSRs182620	BMSSE182630SP	16.50	26	20
BGSRs183020	BMSSE183030SP	16.50	30	20
BGSRs186020	BMSSE186030TP	16.50	60	20
BGSRs223020	BMSSE223030SP	20.50	30	20
BGSRs223620	BMSSE223630SP	20.50	36	20
BGSRs184820	BMSSE184830TP	16.50	48	20
BGSRs226020	BMSSE226030TP	20.50	60	20
BGSRs226620	BMSSE226630TP	20.50	66	20
BGSRs227820	BMSSE227830TP	20.50	78	20
BGSRs228420	BMSSE228430TP	20.50	84	20

- All steel burial sleeves are fabricated from 14-gauge galvanized steel and have an oven cured powder coat polyester finish. (Also available in aluminum as “BA” catalog number, e.g.: BABS228420).
- 12 gauge galvanized steel available upon request (add suffix “-H”)
- 304 stainless steel carriage bolts supplied for assembly.

FIBERGLASS CABINET BASES/FOUNDATIONS

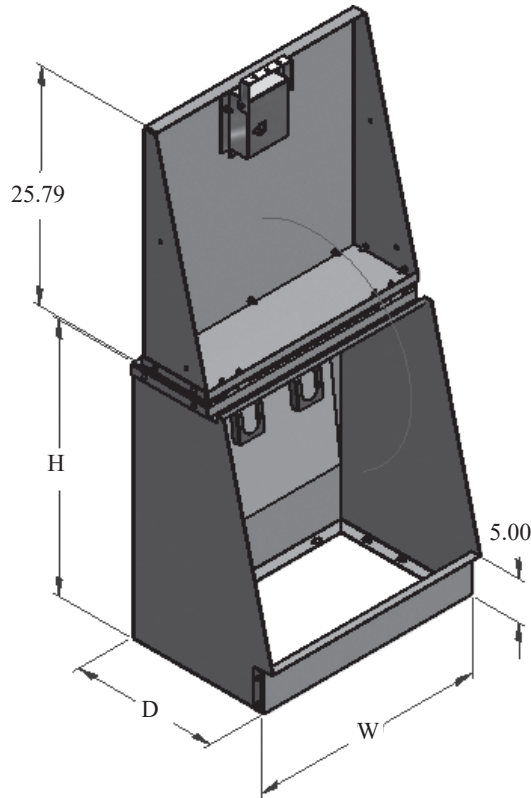


Catalog Number	Depth	Width	Height	Fits Cabinet No.
BFGBS182618	16.5"	26"	18"	BMSSE182630SP
BFGBS183018	16.5"	30"	18"	BMSSE183030SP
BFGBS184818	16.5"	48"	18"	BMSSE184830TP
BFGBS223018	20.5"	30"	18"	BMSSE223030SP
BFGBS223618	20.5"	36"	18"	BMSSE223630SP
BFGBS184818	16.5"	48"	18"	BMSSE184830TP
BFGBS186018	16.5"	60"	18"	BMSSE186030TP
BFGBS224818	20.5"	48"	18"	BMSSE224830TP
BFGBS226018	20.5"	60"	18"	BMSSE226030TP
BFGBS226618	20.5"	66"	18"	BMSSE226630TP
BFGBS227818	20.5"	78"	18"	BMSSE227830TP
BFGBS228418	20.5"	84"	18"	BMSSE228430TP

Non-corrosive and non-conducting base/foundation for mounting sectionalizing cabinets, fusing cabinets or similar applications. Allows ample space for training cables. Easily drilled to accept mounting hardware. Eliminates any concern with corrosion degradation common with metal foundations.

The base is manufactured from durable, non-corrosive, thermoset polyester resin reinforced with fiberglass. The base is maintenance free. Internal or external ribs provide structural integrity and uniform nesting. The bases can be re-stacked and transported without binding. Other sizes available upon request.

ALUMINUM PRIMARY SECTIONALIZING ENCLOSURES SINGLE AND THREE-PHASE 15, 25 & 35KV



PRIMARY SECTIONALIZING ENCLOSURES

Provide a safe and convenient primary cable terminating, sectionalizing, tapping, and switching point for underground distribution systems. Available in sizes for use on single and three phase.

FINISH

Green powder coated finish exceeds ANSI standards and will blend in with the surroundings.

All units are designed to meet ANSI C57.12.28-1988 for pad mounted equipment enclosure integrity.

Catalog Number	Depth	Width	Height	Material
BASE183030SP-H-121	18"	30"	30"	.125 Aluminum
BASE223030SP-H-121	22"	30"	30"	.125 Aluminum
BASE224830TP-H-112	22"	48"	30"	.125 Aluminum
BASE186030TP-H-121	18"	60"	30"	.125 Aluminum
BASE226630TP-H-123	22"	66"	30"	.125 Aluminum

FEATURES:

- When constructed of .090 aluminum as standard, .125 available upon request add suffix "-H".
- Single or three phase.
- Stainless steel Penta-head bolt and stainless steel padlocking handle.
- All 304 stainless steel hardware.
- Ground lugs located on mounting plate and on the enclosure for concentric neutral.
- Mounting plates are available to fit 2, 3, or 4 way multi-taps with parking stand.
- Aluminum, steel or fiberglass burial sleeves available.
- A wind stop is included on all top hinged units for operating safety.

ALL IN ONE

Sectionalizing Enclosures Single and Three-Phase 15 & 25 KV

PRIMARY SECTIONALIZING ENCLOSURE

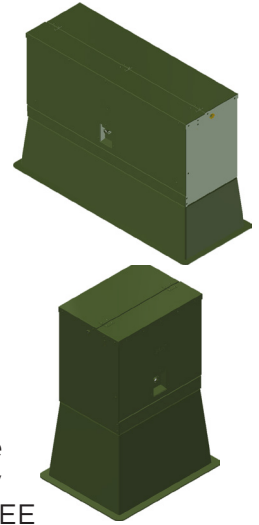
Provide a safe and convenient primary cable terminating, sectionalizing, tapping, and switching point for underground distribution systems. Available in sizes for use on single and three phase.

FIBERGLASS CABINET BASE/FOUNDATION

A non-corrosive and non-conductive base/foundation is designed for mounting sectionalizing cabinets. It provides ample space for training cables and can be easily drilled to accommodate mounting hardware. This foundation eliminates concerns of corrosion degradation commonly associated with metal bases, ensuring long-lasting durability and reliability.

JUNCTION

Used as feed-thrus or for lateral taps. Yellow indicator ring provides positive indication that the mating part is fully seated on the junction interface. Fully shielded, insulated, and submersible. Meets or exceeds IEEE Std. 386 and IEEE Std. 592 requirements. 15KV class adjacent tap interface is 3.24 inches center to center and 25KV class adjacent tap interface is 4.0 inches center to center.



Catalog Number	Description	Depth	Width	Height	Material
BMSSE226630TP-H-121-15J4-WGS BMSSE226630TP-H-121-15J4 BFGBS226618-PD 215J4U	3-phase Cabinet Ground Sleeve 15 KV 200A 4-way Junction	22" 20.5" --	66" 66" --	48" 18" --	Mild Steel Fiberglass
BMSSE226630TP-H-121-25J4-WGS BMSSE226630TP-H-121-25J4 BFGBS226618-PD 228J4U	3-phase Cabinet Ground Sleeve 25 KV 200A 4-way Junction	22" 20.5" --	66" 66" --	30" 18" --	Mild Steel Fiberglass
BMSSE223030SP-H-121-15J4-WGS BMSSE223030TP-H-121-15J4 BFGBS223024-PD 215J4U	Single-phase Cabinet Ground Sleeve 15 KV 200A 4-way Junction	22" 23.8" --	30" 31.8" --	30" 24" --	Mild Steel Fiberglass
BMSSE223030SP-H-121-25J4-WGS BMSSE223030TP-H-121-25J4 BFGBS223024-PD 228J4U	Single-phase Cabinet Ground Sleeve 25 KV 200A 4-way Junction	22" 23.8" --	30" 31.8" --	30" 24" --	Mild Steel Fiberglass
BASE226630TP-H-121-15J4-WGS BASE226630TP-H-121-15J4 BFGBS226618-PD 215J4U	3-phase Cabinet Ground Sleeve 15 KV 200A 4-way Junction	22" 20.5" --	66" 66" --	30" 18" --	Aluminum Fiberglass
BASE226630TP-H-121-25J4-WGS BASE226630TP-H-121-25J4 BFGBS226618-PD 228J4U	3-phase Cabinet Ground Sleeve 25 KV 200A 4-way Junction	22" 20.5" --	66" 66" --	30" 18" --	Aluminum Fiberglass
BASE223030SP-H-121-15J4-WGS BMSSE223030TP-H-121-15J4 BFGBS223024-PD 215J4U	Single-phase Cabinet Ground Sleeve 15 KV 200A 4-way Junction	22" 23.8" --	30" 31.8" --	30" 24" --	Aluminum Fiberglass
BASE223030SP-H-121-25J4-WGS BMSSE223030TP-H-121-25J4 BFGBS223024-PD 228J4U	Single-phase Cabinet Ground Sleeve 25 KV 200A 4-way Junction	22" 23.8" --	30" 31.8" --	30" 24" --	Aluminum Fiberglass

TAP BOX

CMC's tap box allows for versatile connections of multiple electrical circuits in a single enclosure.

A completely customizable solution to meet your specific application needs!

Key Options available but not limited to:

- Common configurations available for tight deadlines
- Available with CMC's unique lay-in feature mechanical bars. Each lay-in connection has a removable "keeper" that allows conductors to be laid into the outlet, solving the problem of trying to bend large conductors in confined areas.
- Connectors included are fabricated from 6061-T6 aluminum alloy for conductivity and strength, fully tested to ANSI C119.4 for Class "A" connectors
- Cabinets available in aluminum, mild steel, and stainless steel
- Aluminum and stainless steel cabinets are available with oven cured powder coat polyester or can be ordered bare
- Available wall or pad mounted, all mounting hardware is 18-8 stainless steel
- Offered with removable swinging doors with stainless steel lift off hinges.
- Separate pad lockable hasp for added security. Additional Penta bolt locking mechanism also available to further protect against power theft.
- Available in single and double door configurations
- NEMA 3R Rated
- Lightweight

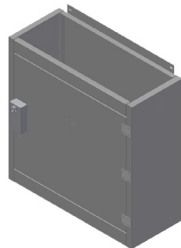
Key Features available but not limited to:

- Available in single or three-phase options up to 6000A depending upon the required configuration
- Range taking mechanical connections
- Utilized for both overhead and underground services
- Knockout locations available for both top and bottom feeds but can accommodate side entry as well

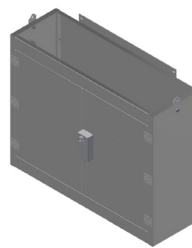
Catalog Number	Depth	Width	Height	Material
BMSTP6-350	6.5	16	60.75	16 GA Mild Steel
LWTR22-750GSS	18	44	44	12 GA 316 SS
LWTR30-750GSS	18	56	44	12 GA 316 SS
LWTE10-750GSS	14	20.75	38	12 GA 316 SS
LWTE24-350-ON	14	30	42	12 GA Mild Steel
LWTE30-350-ON	24	44	54	12 GA Mild Steel
LWTE6-350-ON	6.5	16	24.75	16GA Mild Steel



BMSTP6-350



LWTR22-750GSS



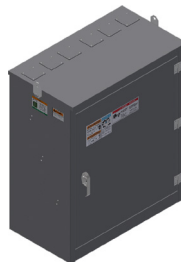
LWTR30-750GSS



LWTE10-750GSS



LWTE24-350-ON



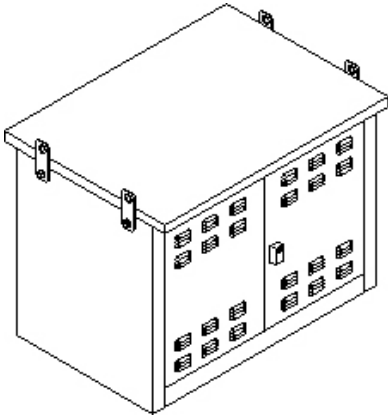
LWTE30-350-ON



LWTE6-350-ON

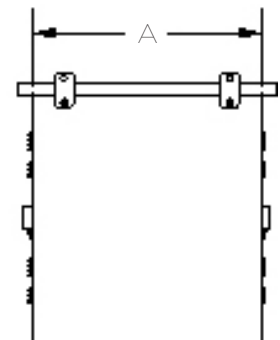
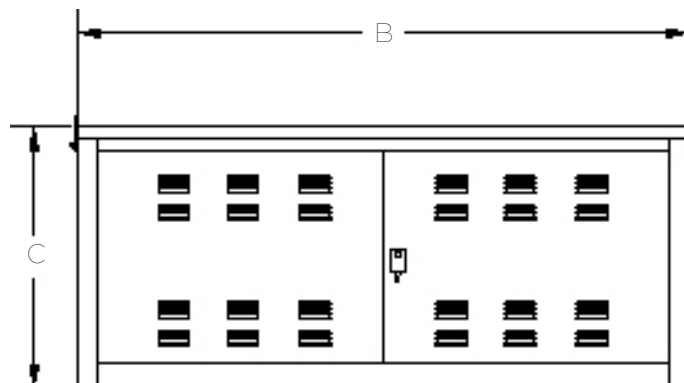
PRIMARY METER ENCLOSURES

Cabinet Technical Data



- Designed to conform to ANSI C57.1228.
- Fabricated from .125 aluminum (unpainted standard), or 12 gauge galvanized steel (painted standard).
- If painted, will be Powder Coated Pad Mount Green.
- Unit will be supplied with 3-point stainless steel latch with penta-head bolt.
- Unit will be supplied with isolating barriers between phases in the transformer compartment.
- Unit shall be supplied with .250" clear polycarbonate barriers in the transformer department.
- Unit will be supplied with lift provisions adequate to withstand handling with normal utility equipment after the instrument transformers have been installed.

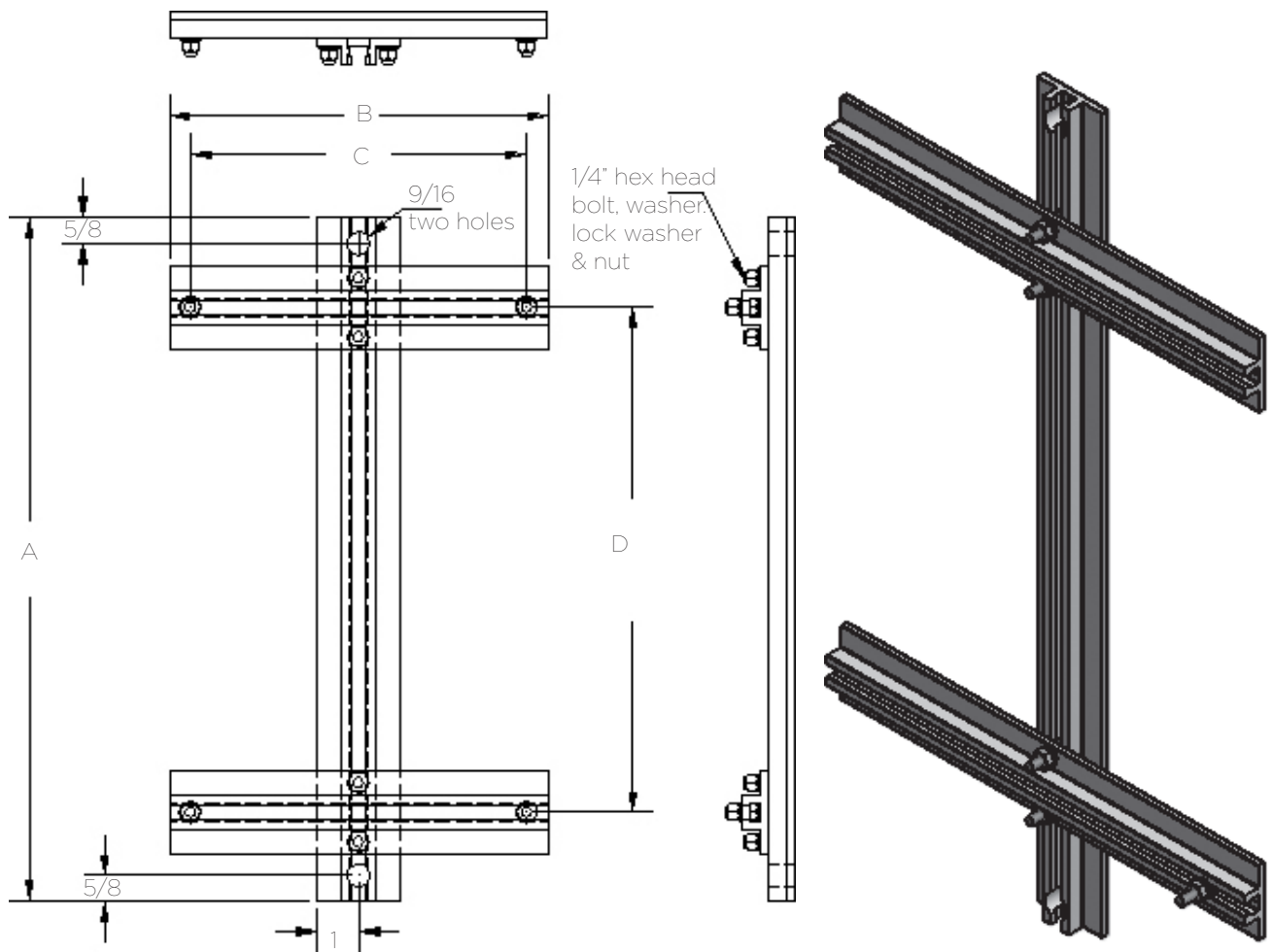
Catalog Number	Doors	Depth A	Width B	Height C
BA424245FBD	4	42"	42"	45"
BA424254FBD	4	42"	42"	54"
BA424263FBD	4	42"	42"	63"
BA428542FBD	6	42"	85"	45"
BA428553FBD	6	42"	85"	53"
BA428563FBD	6	42"	85"	63"
BA4212845FBD	6	42"	128"	45"
BA4212853FBD	6	42"	128"	53"
BA4212863FBD	6	42"	128"	63"
BA545463FBD	4	54"	54"	63"
BA5410963FBD	6	54"	109"	63"
BA5416463FBD	6	54"	164"	63"



MULTI PURPOSE CABINET MOUNTING BRACKETS

T-Slot adjustable multi-purpose mounting bracket for cabinets or other light duty enclosures.

Bracket is designed for attaching to poles or walls.



Catalog Number	A	B	C	D
BCB-1218	22.25	13.0	1.0 to 12.0	2.0 to 18.0
BCB-1624	28.25	17.0	1.0 to 16.0	2.0 to 24.0
BCB-1830	34.25	19.0	1.0 to 18.0	2.0 to 30.0

SOLAR CABINET

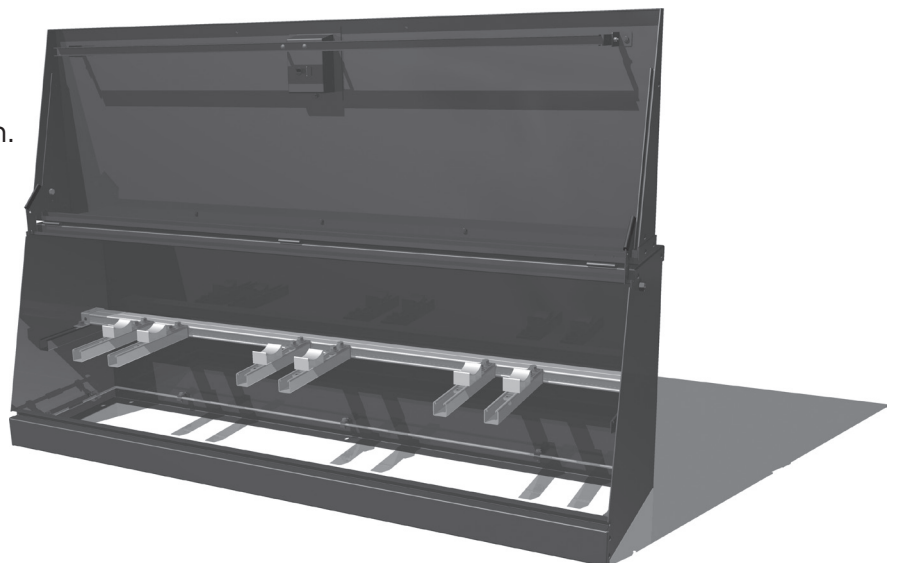
BGSSE228430TP-H-US1

- Strut design utilized for easy junction hanging
- Heavy-Duty channelized construction.
- Fabricated from 12 gauge galvaneel steel.
- Also available in mild steel, aluminum, or stainless steel (contact rep).
- Heavy duty wind locks are standard.
- Stainless steel hinge barrels, pins, padlock hasp, and exterior hardware.
- Full 3/8" diameter solid copper ground loop standard
- Oven cured green powder coat polyester finish exceeds ANSI standard C57.12.28.
- Standard paint color: Munsell dark green. Provides a safe and convenient primary cable terminating, sectionalizing, tapping, and switching point for underground solar distribution systems.



Exterior dimensions:
22" deep x 84" wide x 30" high.

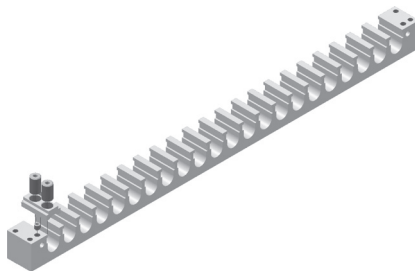
Optional predrilled 18" mating
fiberglass sleeve
(BFGBS228418-PD)
available, "sold separately".



TERMINATION ENCLOSURE OPTIONS

Add suffix:

- R - Reverse Stagger the Bus Bars (to run cable in from the top)
- CU - Copper NEMA Mount Bus Bars
- C - Plastisol Covers for Bus Bars
- DF - Dead Fronts
- T - Tin Plated Bus bars
- SS - Stainless Steel Cabinets
- G - Grounding Strap
- LI - Lay-In Bus Bar
 - Unique lay-in feature reduces frustration of feeding multiple conductors through standard connectors.
 - Each outlet has a removable “keeper” that allows conductors to be laid into the outlet, solving the problem of trying to bend large conductors in confined areas. The “keeper” is then slid over the conductor and the set-screws are tightened. It is fast and easy at initial installations and for later service additions.
 - Connectors are fabricated from 6061-T6 aluminum alloy for conductivity and strength.
 - Fully tested to ANSI C119.4 for Class “A” connectors.



WALL-MOUNTED TERMINATION ENCLOSURES

TYPE LWTE

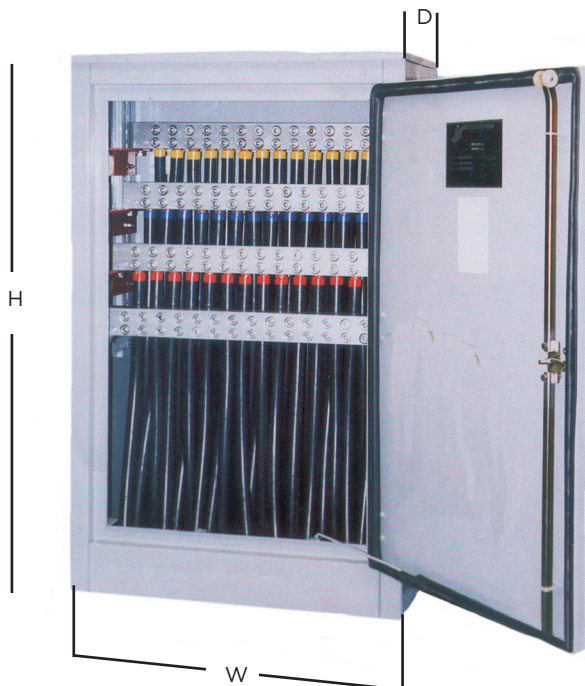
Three-Phase, NEMA 3R (rain-proof), 600 Volt Rated

- Aluminum mechanical bar connector eliminates compression tools, lugs and bolt assemblies.
- Aluminum enclosure is lightweight, low maintenance and has excellent corrosion resistance.
- Ample working space, allowing for easier termination with a removable swinging door.
- All-welded construction: welds and seams are ground smooth.
- Manufactured to meet or exceed ANSI C57-12.28 for wall-mount equipment enclosure integrity.
- Three-point positive latch mechanism (secured with a captive and recessed penta-head bolt) and shielded padlock shackle.
- Finish meets or exceeds proposed EEI paint specification.
- Finish is gray, oven cured powder coat.
- All mounting hardware is 18-8 stainless steel.



Catalog Number	Cond. Range AWG	No. of Cond. Per Phase	Cover	W	D	H	U.L. Listed Amp Rating	
				Dimensions - Inches			Copper	Alumi- num
LWTE21-500	500-10	21		32	16	51	3800	3100
LWTE14-750	750-2	14		32	16	51	3325	2695

- Consult factory for special applications or conductor sizes.
- Add suffix "C" to the end of the catalog number to include 4-phase covers.
- Grounding strap not included. Add suffix "G".
- Add Suffix LI for Lay-in BUS Bar



Cover available - not U.L. listed
TEC-30

PAD-MOUNTED TERMINATION ENCLOSURES

TYPE **LPTE/LPLE**

Three-Phase, NEMA 3R (rain-proof), 600 Volt Rated

- Aluminum mechanical bar connector eliminates compression tools, lugs and bolt assemblies.
- Aluminum enclosure is lightweight, low maintenance and has excellent corrosion resistance.
- All-welded construction: Welds and seams are ground smooth.
- Manufactured to meet or exceed ANSI C57-12.28 for pad-mount equipment enclosure integrity.
- Removable swinging doors - Doors have stainless steel lift off hinges with stainless steel three-point locking handles and recessed stainless steel penta-head bolts for security.
- Finish is Munsell green, oven cured powder coat.
- All mounting hardware is 18-8 stainless steel.



ANSI C119.4
14KL

**Any pad mount enclosure can be made with a lift-off (removable) top.
To order this way, use "LPLE" (instead of "LPTE").**

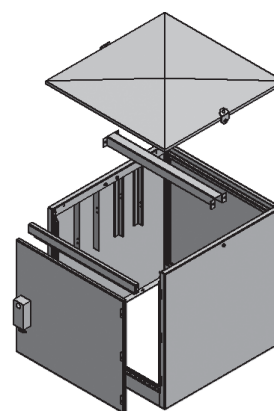
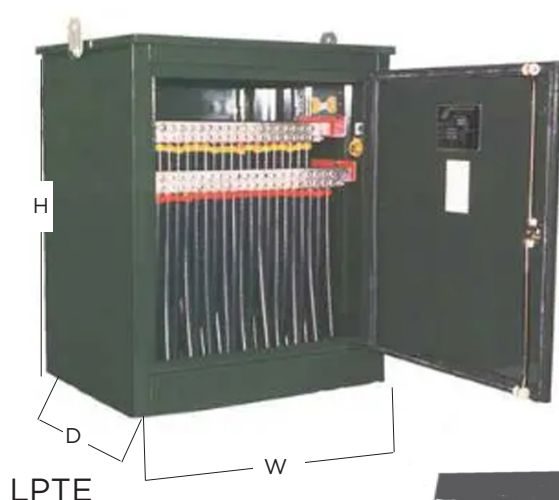
Catalog Number	Cond. Range AWG	No. of Cond. Per Phase	Cover	W	D	H	U.L. Listed Amp Rating	
				Dimensions - Inches			Copper	Aluminum
LPTE14-750	750-2	14		25	24	44	3325	2695
LPTE22-750	750-2	22		36	30	44	5225	4235
LPTE24-750	750-2	24		48	54	44	4560	3720
LPTE30-750	750-2	30		48	30	44	4905	4005

--Consult factory for special applications or conductor sizes.

--Add suffix "C" to the end of the catalog number to include 4-phase covers.

--Grounding strap not included. Add suffix "G".

--Add Suffix LI for Lay-in BUS Bar



Cover available not - U.L. listed
TEC-34

ALUMINUM PAD-MOUNTED TERMINATION ENCLOSURES

TYPE LWTE-CU

- CMC's new line of aluminum enclosures is lightweight, low maintenance and has excellent corrosion resistance.
- Cabinets provide ample working space, allowing for easier termination with a removable swinging door.
- All-welded construction: welds and seams are ground smooth.
- Cabinets are manufactured to meet or exceed
- ANSI C57-12.28 for wall-mount equipment enclosure integrity.
- Three-point positive latch mechanism (secured with a captive and recessed penta-head bolt), and shielded padlock shackle.
- Finish meets or exceeds proposed EEI paint specification.
- Pad Mount finish is Munsell Green.
- Cabinets are made to order with custom configurations for amperage etc.
- All mounting hardware is 18-8 stainless steel.
- Solid CDA110, NEMA spaced copper bus
- CU only
- Designed for easy connection to copper NEMA spaced compression terminations.
- CMC recommends the use of CHL copper, NEMA spaced compression lugs and SBAXX-HD bolt assemblies for your best connection option.

As with our entire cabinet line, custom configurations and amperage requirements available upon request. Contact your local rep.

Catalog Number	No. of Cond. Per Phase	W	D	H	Amperage Rating
		Dimensions - Inches			Copper
LPTE14-50-CU	14	36	30	40	2000
LPTE22-50-CU	22	50	30	44	2000
LPTE32-50-CU	32	64	30	44	2000
LPTE14-10-CU	14	36	30	40	4000
LPTE22-10-CU	22	50	30	44	4000
LPTE32-10-CU	32	64	30	44	4000



ALUMINUM WALL-MOUNTED TERMINATION ENCLOSURES

TYPE LWTE12-50-CU

- CMC's new line of aluminum enclosures is lightweight, low maintenance and has excellent corrosion resistance.
- Cabinets provide ample working space, allowing for easier termination with a removable swinging door.
- All-welded construction: welds and seams are ground smooth.
- Cabinets are manufactured to meet or exceed ANSI C57-12.28 for wall-mount equipment enclosure integrity.
- Three-point positive latch mechanism (secured with a captive and recessed penta-head bolt) and shielded padlock shackle.
- Finish meets or exceeds proposed EEI paint specification.
- Wall Mount finish is ANSI Gray.
- Cabinets are made to order with custom configurations for amperage etc.
- All mounting hardware is 18-8 stainless steel.
- Solid CDA110, NEMA spaced copper bus
- CU only
- Designed for easy connection to copper NEMA spaced compression terminations.
- CMC recommends the use of CHL copper, NEMA spaced compression lugs and SBAXX-HD bolt assemblies for your best connection option.

As with our entire cabinet line, custom configurations and amperage requirements available upon request. Contact your local rep.

Catalog Number	No. of Cond. Per Phase	W	D	H	Amperage Rating
		Dimensions - Inches			Copper
LWTE12-50-CU	12	32	16	51	2000
LWTE12-10-CU	12	32	16	51	4000



CABLE SPLICING ENCLOSURE FOR WIND TURBINES

TYPE LWS

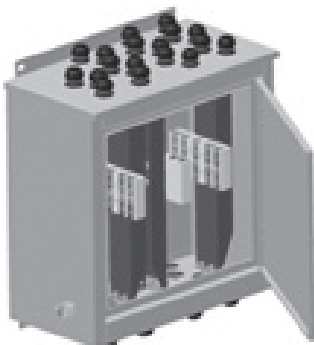
- Lay-in bus bars for easy installation
- Lightweight
- Fast and easy to install - Saves time
- Aluminum mechanical bar connector eliminates compression tools, lugs and bolt assemblies.
- Aluminum enclosure is lightweight, low maintenance and has excellent corrosion resistance.
- All-welded construction: Welds and seams are ground smooth.
- Manufactured to meet or exceed ANSI C57-12.28 for pad-mount equipment enclosure integrity.
- Removable swinging doors - Doors have stainless steel lift off hinges with stainless steel three point locking handles and recessed stainless steel penta-head bolts for security.
- All mounting hardware is 18-8 stainless steel.
- Serviceable
- Customize to Meet Your Needs
- Versatile
- DLO Cable Compatible



PATENTED

Catalog Number	Cond. Range AWG	No. of Cond. Per Phase	W	D	H	U.L. Listed Amp Rating	
			Dimensions - Inches			Copper	Aluminum
LWSA-4B	750-2	5	32.00	16.00	32.00	3000	3000
LWSC-6NCO	600-10	4	40.00	16.00	38.00	3000	3000

--Consult factory for special applications or conductor sizes.



LWSC-6NCO

