

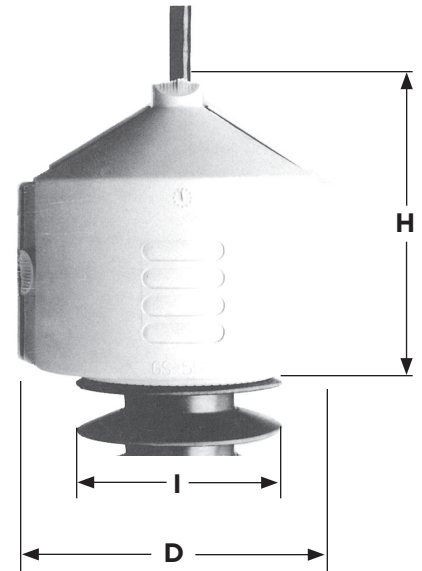
# OTHER DISTRIBUTION ONE PIECE WILDLIFE PROTECTOR

POLYPROPYLENE  
GS Series

- Designed to provide protection for equipment bushing from accidental contact by squirrels, birds or other wildlife.
- Hinged construction for easy installation or retrofit on a variety of bushing insulators. Equipment tap wire does not have to be disconnected during installation.
- Flexible “fingers” on cable entry ports close around tap conductor and cover unused ports.
- Flexible “fingers” at base of protector provide a snug fit on various size bushings.

**Material:** Track resistant polypropylene stabilized with UV inhibitors for long term performance. Munsell gray color.

**Note:** GS565 is polyethylene with UV inhibitors. Munsell gray color.



GS555 Series

Figure 1



GS560 Series

Figure 2



GS565 Series Δ

Figure 3

## Ordering Information

CATALOG NUMBER	FIGURE NO.	BUSHING ACCOMMODATED	LATCH TYPE	DIMENSIONS INCHES (MM)			WT. LB. (KG)
				D	H	NOMINAL INSULATOR SKIRT DIAMETER	
GS555H	1	Distribution and Transformer Bushings	2 Washboard-Peg	5.38 (136.92)	6.18 (156.97)	3.75" to 5.25" (95.44 to 133.61)	.28 (.13)
GS560H	2	Distribution and Transformer Bushings	2 Pinch Latches, One Top Clasp	4.88 (124.20)	10.59 (268.99)	3.75" to 4.75" (95.44 to 120.59)	.48 (.21)
GS565	3	Transformer Bushings	1 Piece Slot Design-Snap Joint	4.25 (108.16)	9.75 (248.14)	3.25" to 4.25" (82.71 to 108.16)	.40 (.18)

DI  
1



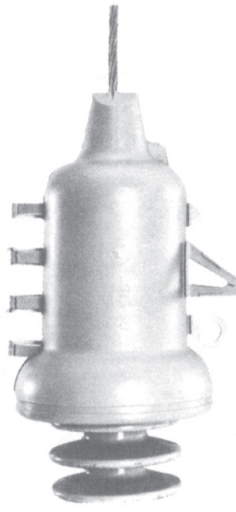
# OTHER DISTRIBUTION ONE PIECE WILDLIFE PROTECTOR

POLYPROPYLENE  
GS



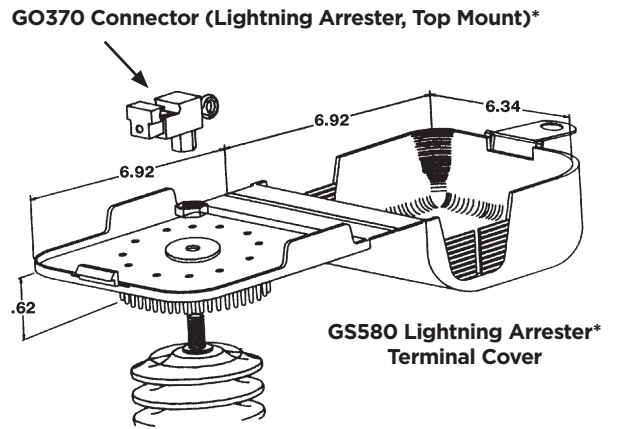
**GS567**

**Figure 1**



**GS570**

**Figure 2**



**\*Figure 3**

## Ordering Information

CATALOG NUMBER	FIGURE NO.	BUSHING ACCOMMODATED	DIMENSIONS INCHES (MM)			WT. LB. (KG)
			D	H	NOMINAL INSULATOR SKIRT DIAMETER	
GS567	1	Recloser, Regulator and Pot Head Bushings	6.38 (162.37)	10.50 (267.23)	5.00" to 6.25" (127.25 to 159.06)	.80 (.36)
GS570	2	Larger diameter bushings such as substation transformer & circuit breakers	8.12 (206.65)	13.75 (349.94)	6.75" to 8.00" (171.79 to 203.60)	1.21 (.55)
GS580	3	Covers Arrester to Line Connection (Lightning Arrester)	6.34 X 6.92 (161.35 X 176.11)	5.00 (127.25)	Fits up to 6" Diameter Arrester (153.70)	.40 (.18)

\* See also GC207LA or LAT Lightning Arrester Terminals for bottom side of lightning arresters.

DI  
2



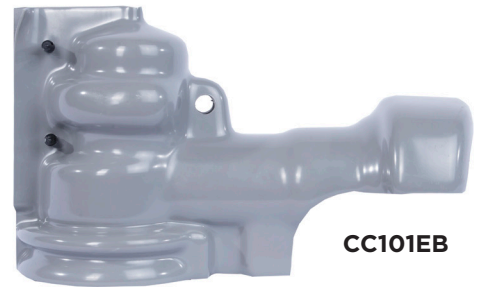
# OTHER DISTRIBUTION ONE PIECE WILDLIFE PROTECTOR

VINYL  
CC101/CC170

- Designed to provide protection of cutouts from accidental contact by squirrels, birds or other wildlife.
- Universal one-piece design for easy installation or retrofit.
- Fits Chance® and other major manufacturer's cutouts. See sizes below.
- Fits both Polymer and Porcelain type cutouts.
- Has hot stick eye .
- Gray color

**Material:** Proprietary low track PVC that is UV stabilized for long-term performance.

**NOT INTENDED FOR USE AS A SAFETY DEVICE.**



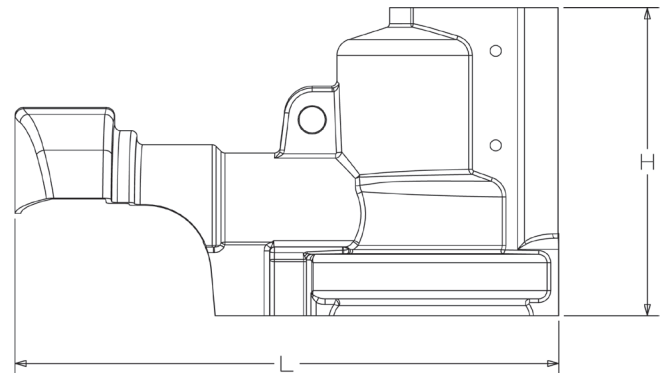
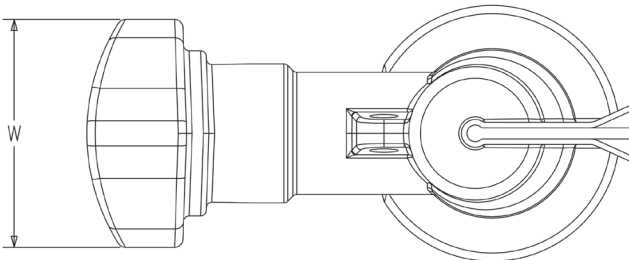
CC101EB



CC101



CC170



## Ordering Information

CATALOG NUMBER	FITS CUTOUT SIZES (KV)	BIL RATING	HOT-STICK EYE (Y/N)	DIMENSIONS INCHES (MM)			GROSS WEIGHT LBS (KG)
				LENGTH	WIDTH	HEIGHT	
CC101*	15, 27	150	Y	11 (279.4)	5 (127)	7 (177.8)	1.31 (.59)
CC170	15, 27, 36	170	Y	12 (304.8)	5 (127)	7 (177.8)	1.48 (.67)

\* For Eyebolt version add "EB" suffix

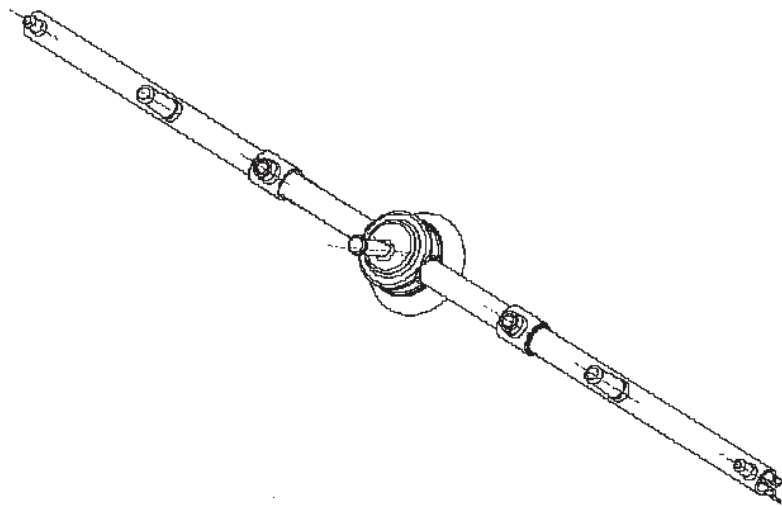
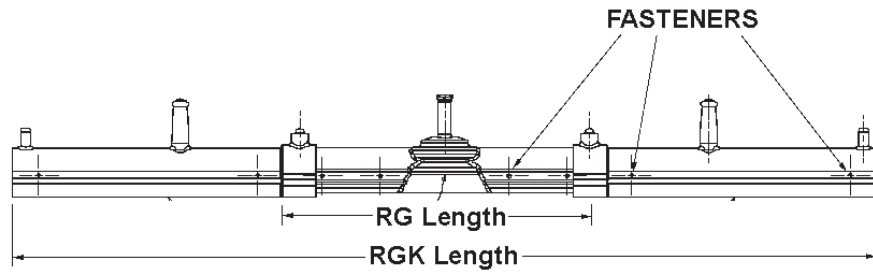


# OTHER DISTRIBUTION WILDLIFE PROTECT

VINYL  
RG100 series

- For use as raptor guard on insulators.
- For wildlife protection only.
- Each piece includes non-metallic fasteners for additional mechanical strength.

**Material:** **Body** - Proprietary, UV stabilized low track vinyl kits come pre-packaged in plastic bags.



## Ordering Information

CATALOG NUMBER	INSULATOR SIZE	LENGTH INCHES (MM)	WEIGHT EA. LBS (KG)
RG101C	C-neck	24 (609)	1.1 (.50)
RG102F	F-neck	24 (609)	1.5 (.68)
RG103J	J-neck	26 (660)	5.5 (2.48)
RG101CK	C-neck	66 (1676)	4.1 (1.85)
RG102FK	F-neck	66 (1676)	4.5 (2.03)
RG103JK	J-neck	68 (1739)	8.5 (3.83)
RGE100	extension	23 (584)	1.5 (.68)

"K" suffix - Kit consists of insulator cover, two RGE100 extensions and fasteners

DI  
4



# DISTRIBUTION/TRANSMISSION/SUBSTATION ELECTRICAL JOINT COMPOUND/INHIBITOR

DESCRIPTION  
INHIBITORS

HTJC

Anderson Versa-Seal® High Temperature Joint Compound (HTJC) is a synthetic-based, gritted, high-temperature compound developed for use on two-piece compression fittings on ACSS conductors rated 250° C.

**HTJC** employs conductive grit and thermally conductive filler to reduce connection resistance and allows connectors to operate at cooler temperatures.

This electrically and thermally conductive compound is also ideal for use on standard aluminum conductor (AAC and ACSR) fittings including Fargo Uni-Grip® deadends, splices and terminals.

**HTJC** fills internal voids in compression and bolted joints, sealing out moisture. HTJC is also an excellent choice for pad-to-pad applications as the grit is very fine and conductive.

See table labeled “Joint Compound Required” for Fargo transmission fittings.



## HTJC Inhibitor

CAT. NUMBER	TRADE NAME	DESC/SIZE	SERVICE TEMP.	TO BE USED ON:			COLOR
				COMPRESSION	GROOVE/BOLTED	PAD	
VS8HTJC	ANDERSON	8 OZ. PLASTIC BOTTLE	-40°F to +480°F (-40°C to 250°C)	●	●	●	GRAY
HTJC16	ANDERSON	CAULK TUBE	-40°F to +480°F (-40°C to 250°C)	●	●	●	GRAY

HTJCNG

HTJCNG utilizes the same synthetic base of HTJC without the grit.

- HTJCNG is recommended for flat-to-flat and grooved/bolted connections
- Helps prevent corrosion and oxidation by sealing out air and water
- Amber in color

## HTJCNG Inhibitor

CAT. NUMBER	DESC/SIZE	SERVICE TEMP.	TO BE USED ON:			COLOR
			COMPRESSION	GROOVE/BOLTED	PAD	
HTJCNG4B	4 oz Bottle	-40 to 400 F		●	●	AMBER
HTJCNG8B	8 oz Bottle	-40 to 400 F		●	●	AMBER
HTJCNGQC	Quart can	-40 to 400 F		●	●	AMBER

DI 5



# DISTRIBUTION/TRANSMISSION/SUBSTATION ELECTRICAL JOINT COMPOUND/INHIBITOR

DESCRIPTION  
INHIBITORS

VERSA-SEAL®  
VS/VG



**VS** type Anderson VERSA-SEAL®, non-gritted electrical joint compound is UL listed for all aluminum and copper applications, such as pad-to-pad surfaces.

**VSG** type Anderson Versa-Seal®, gritted electrical joint compound is UL listed for all aluminum and copper compression connections. It is not recommended for use as a lubricant on threaded fittings as improper torque values or thread galling may occur.

- **VS** is a non-petroleum, non-toxic, non-gritted compound for use where EPDM, natural rubber, as well as polyethylene insulating products, may come in contact with the sealant.
- **VSG** is a non-petroleum, non-toxic gritted compound for use where EPDM, natural rubber, as well as polyethylene insulating products, may come in contact with the sealant.
- **VS** is recommended for bolted joints, flat-to-flat contact surfaces, terminal and lug tongues, grooves of bolted parallel connectors or hot-line clamps, lubricating insulating sleeves and caps, and for improving electrical conductivity on all metallic conduit threads.
- **VSG** is recommended for NEMA minimum tension compression terminals. VSG helps break oxide films on contact surfaces while enhancing conductivity between conductor strands with its conductive grit. Also for two-piece full tension dead-ends and sleeves.
- Yellow tint for **VS** identification.
- Blue tint for **VSG** identification.

## VS/VSG Inhibitor

CAT. NUMBER	TRADE NAME	DESC/ SIZE	SERVICE TEMP.	TO BE USED ON:			BASE OIL		GRIT TYPE			COLOR
				COMP- RESSION	GROOVE/ BOLTED	PAD	SYNTH./ VEG.	PET- ROL.	FINE CON- DUCT	GRITTED	NON GRIT- TED	
VS8B	ANDERSON VERSA-SEAL	8 OZ. PLASTIC BOTTLE	-40°F to +300°F (-40°C to 149°C)		•	•	•				•	YELLOW
VSG8B	ANDERSON VERSA-SEAL	8 OZ. PLASTIC BOTTLE	-40°F to +300°F (-40°C to 149°C)	•			•			•		BLUE

DI  
6

# TAMPERPROOF EQUIPMENT LOCKS

LOCKS
<b>GM300</b>

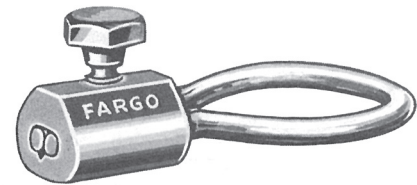
Designed for semi-permanent single-use locking of power pedestals, equipment housings, truck/trailer doors, etc.

Locks available in torque screw and pressed pin design.

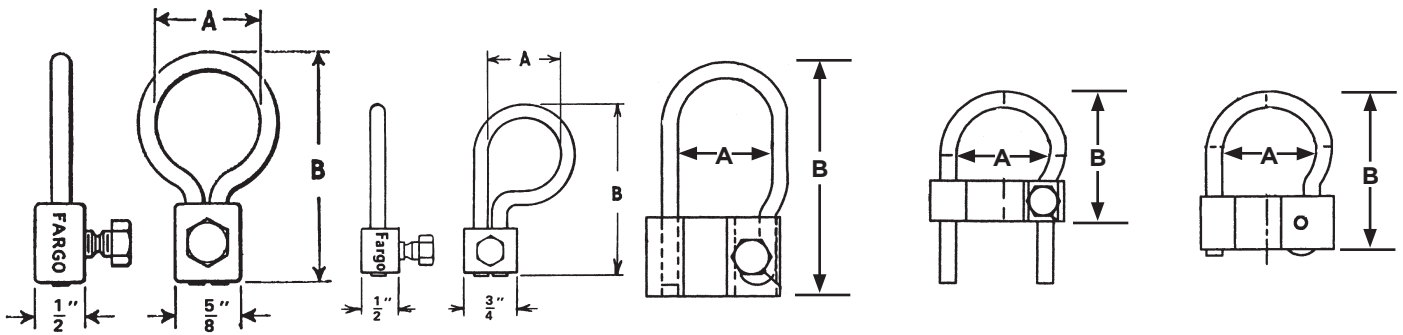
Locks provide over 600 lb (272 Kg) pull strength.

Locks may be removed with bolt cutters or hacksaw.

**Material:** **Body** - Extruded alluminum alloy  
**Ring** - Alumoweld®  
**Bolt** - Aluminum - (shears @ 60 in-lb torque)  
**Pin** - Spring Steel



**GM305**



**Figure 1**

**Figure 2**

**Figure 3**

**Figure 4**

**Figure 5**

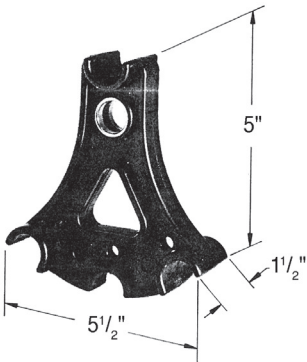
## Ordering Information

CATALOG NUMBER	FIGURE NO.	A (MM)	B (MM)	C (MM)	RING WIRE SIZE (MM)	FASTENER TYPE	WT LB (KG)
<b>GM305</b>	1	1" (25.45)	2 1/4" (57.26)	1/2 (12.73)	#6 (.162) (4.12)	Torque Screw	.06 (.03)
<b>GM306</b>	1	2" (50.90)	3 1/4" (82.71)	1/2 (12.73)	#6 (.162) (4.12)	Torque Screw	.07 (.03)
<b>GM307</b>	2	1" (25.45)	2 1/4" (57.26)	1/2 (12.73)	#6 (.162) (4.12)	Torque Screw	.06 (.03)
<b>GM320</b>	3	1" (25.45)	2 1/2" (63.63)	3/4 (19.09)	#4 (.204) (5.19)	Torque Screw	.12 (.03)
<b>GM3203</b>	3	1" (25.45)	3 1/4" (82.71)	3/4 (19.09)	#4 (.204) (5.19)	Torque Screw	.12 (.03)
<b>GM321</b>	4	1" (25.45)	2 1/2" (63.63)	3/4 (19.09)	#4 (.204) (5.19)	Torque Screw	.07 (.03)
<b>GM322</b>	5	1" (25.45)	2 1/2" (63.63)	3/4 (19.09)	#4 (.204) (5.19)	Pressed Pin	.11 (.05)
<b>GM3223</b>	5	1" (25.45)	3 1/4" (82.71)	3/4 (19.09)	#4 (.204) (5.19)	Pressed Pin	.12 (.03)

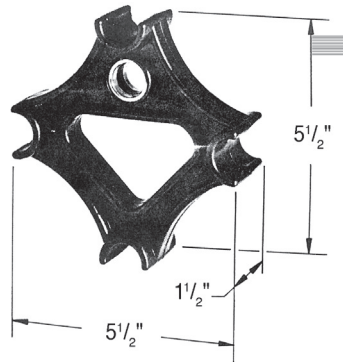


# OTHER DISTRIBUTION LINE SPACERS

POLYETHYLENE  
LINE SPACER



**GO53**



**GO54**

For Triplex and Quadruplex Conductors

- Provides simple and permanent spacing of secondary triplex or quadruplex conductor to ease installation of connectors or taps.
- Molded from high density polyethylene and stabilized with ultra violet inhibitors for superior long term performance.
- Wide radius conductor positions accommodate a range of triplex and quadruplex conductors. Diameter 0.75" each (both styles).
- Eyelet provides convenient attachment for service drop dead ends.

## Ordering Information

CATALOG NUMBER	NO. CONDUCTORS	DIMENSIONS INCHES (MM)			WT LB (KG)
		L	W	H	
GO53	3	5-1/2 (139.98)	1-1/2 (38.18)	5 (127.25)	.27 (.12)
GO54	4	5-1/2 (139.98)	1-1/2 (38.18)	5 1/2 (139.98)	.28 (.13)





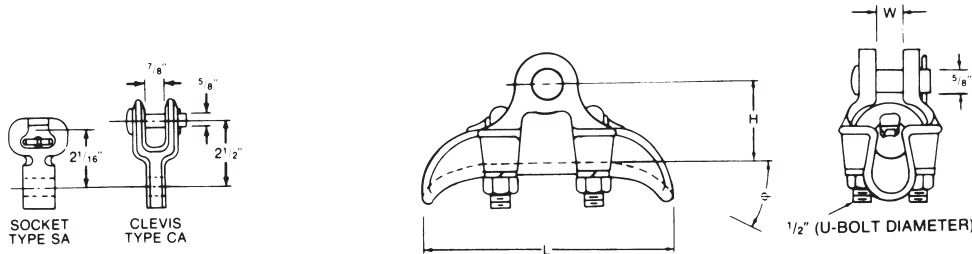
# SUSPENSION BRONZE CLAMP

BRONZE
BRS

For use with copper or Copperweld® cable.

Through the use of these clamps hysteresis and eddy current power losses are reduced to a minimum. Liners are not required.

- Material:**
- Body** - High Tensile Bronze Alloy
  - Keeper** - Electrical Bronze
  - \*Hardware** - Galvanized Steel
  - Socket and Clevis** - Ductile Iron, Galvanized
  - Cotter Pin** - #302 Stainless Steel



## Product Data & Conductor Size

CATALOG NUMBER	FITTING		CLAMPING RANGE INCHES (MM)	ULTIMATE BODY STRENGTH LBS. (KN)	MAX. TAKE-OFF ANGLE	DIMENSIONS INCHES (MM)			APPROX. WT. EACH LBS. (KG)
	TYPE	CAT. NO.				L	W	H	
BRS60N	None	—	.20-.60	16,000	15°	6-1/2 (165.10)	3/4 (19.05)	2-1/4 (57.15)	2.9 (1.32)
BRS60S	Socket	SA04	(5.08-15.24)	(71)					4.4 (1.90)
BRS60C	Clevis	CA04							4.5 (2.04)
BRS83N	None	—	.40-.83	18,000	15°	7-1/4 (184.15)	31/32 (24.6)	2-3/8 (60.33)	3.7 (1.68)
BRS83S	Socket	SA06	(10.16-21.08)	(80)					5.0 (2.27)
BRS83C	Clevis	CA06							5.4 (2.45)
BRS100N	None	—	.625-1.00	22,000	15°	8 (203.20)	1-1/8 (28.58)	2-1/2 (63.50)	4.5 (2.04)
BRS100S	Socket	SA07	(15.88-25.40)	(98)					5.9 (2.68)
BRS100C	Clevis	CA101							6.3 (2.81)
BRS118N	None	—	.70-1.18	25,000	20°	8 (203.20)	1-9/32 (32.55)	2-1/2 (63.50)	4.9 (2.22)
BRS118S	Socket	SA11	(17.78-29.97)	(111)					
BRS118C	Clevis	CA101							

NOTE: Recommended torque on U-bolts; 1/2"—480 in. lbs.

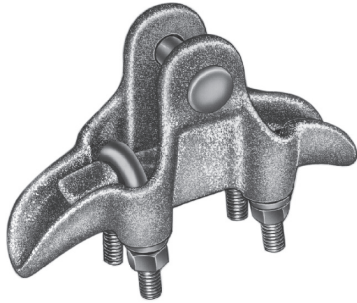
\* Bronze U-bolts, nuts and washers can be furnished by adding suffix "ED" to catalog number. Example, BRS60NED.

DI  
9



# SUSPENSION DUCTILE IRON CLAMP

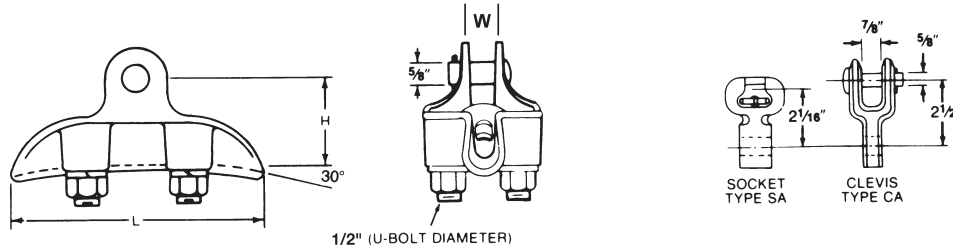
DUCTILE IRON  
MS



For ground wire application with galvanized steel cable with or without armor rods.

Type MS may also be used to suspend copper or Copperweld® cable. Magnetic induction heating will occur.

**Material:** **Body and Keeper** - Ductile Iron, Galvanized  
**Hardware** - Galvanized Steel  
**Cotter Pin** - #302 Stainless Steel



## CLAMP RECOMMENDATIONS FOR GALVANIZED OVERHEAD GROUND WIRE

STEEL CABLE SIZE	BARE CONDUCTOR		FORMED ARMOR RODS	
	CLAMP CAT. NO.	DIAMETER INCHES (MM)	CLAMP CAT. NO.	DIAMETER INCHES (MM)
1/4"-7 Str.	MS46	.240 (6.10)	MS46	.412 (10.46)
5/16"-7 Str.	MS46	.312 (7.92)	MS60	.512 (13.00)
3/8"-7 Str.	MS46	.360 (9.14)	MS60	.560 (14.22)
7/16"-7 Str.	MS46	.435 (11.05)	MS82	.673 (17.09)
1/2"-7 Str.	MS60	.495 (12.57)	MS82	.771 (19.58)
5/8"-7 Str.	MS70	.621 (15.77)	—	—

### Product Data & Conductor Size

CATALOG NUMBER	FITTING		CLAMPING RANGE INCHES (MM)	ULTIMATE BODY STRENGTH LBS. (KN)	DIMENSIONS INCHES (MM)			APPROX. WT. EACH LBS. (KG)
	TYPE	CAT. NO.			L	H	W	
MS46N	None	—	.20-.46	16,000	5-5/8	2	7/8	2.15 (.98)
MS46S	Socket	SA04	(5.08-11.68)	(71)	(142.88)	(50.8)	(22.2)	3.4 (1.54)
MS46C	Clevis	CA04						3.8 (1.73)
MS60N	None	—	.20-.60	16,000	6-7/16	2	7/8	2.65 (1.20)
MS60S	Socket	SA04	(5.08-15.24)	(71)	(163.51)	(50.8)	(22.2)	3.9 (1.77)
MS60C	Clevis	CA04						4.3 (1.95)
MS70N	None	—	.30-.70	18,000	6-3/8	2	15/16	2.90 (1.32)
MS70S	Socket	SA05	(7.62-17.78)	(80)	(161.93)	(50.8)	(23.8)	4.2 (1.91)
MS70C	Clevis	CA05						4.6 (2.09)
MS82N	None	—	.40-.82	18,000	7-1/2	2-3/8	15/16	3.25 (1.47)
MS82S	Socket	SA06	(10.16-20.83)	(80)	(190.50)	(60.33)	(23.8)	4.7 (2.13)
MS82C	Clevis	CA06						5.0 (2.27)
MS104N	None	—	.50-1.04	25,000	8	2-3/4	1-1/8	5.70 (2.59)
MS104S	Socket	SA07	(12.70-26.42)	(111)	(203.2)	(69.9)	(28.6)	7.1 (3.22)
MS104C	Clevis	CA06						7.4 (3.36)

NOTE: Recommended torque on U-bolts; 1/2"—480 in. lbs.

\* Bronze U-bolts, nuts and washers can be furnished by adding suffix "ED" to catalog number. Example, BRS60NED.

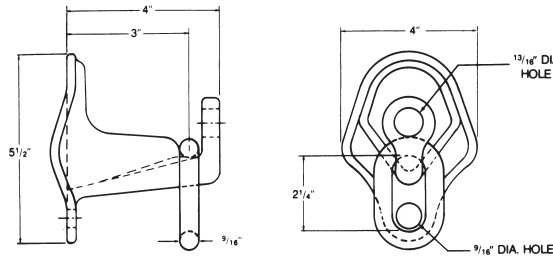
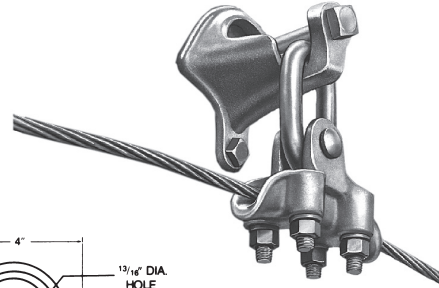


# SUSPENSION DUCTILE IRON GROUND WIRE SUPPORT BRACKET

DUCTILE IRON  
GWB1S

Designed to be used with most types of suspension clamps (aluminum or ferrous). May be mounted with through bolt and lag screw.

**Material:** **Body, Keeper, and Eyebolt** - Bronze Alloy  
**Eyestem** - Bronze Alloy, Forged



## Product Data & Conductor Size

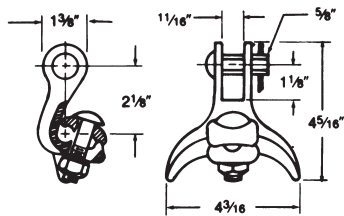
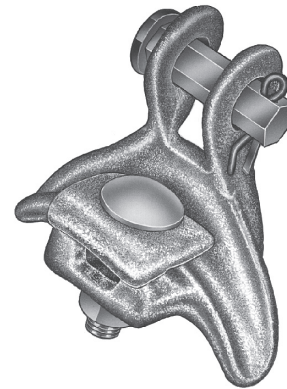
CATALOG NUMBER	MOUNTING HARDWARE MAX. DIA. INCHES (MM)		MOUNTING BOLT SPACING INCHES (MM)	ULTIMATE STRENGTH VERTICAL LBS. (KN)	APPROX. WT. EACH LBS. (KG)
	BOLT	LAG SCREWS			
GWB1S	3/4 (19.05)	1/2 (12.70)	3-5/16 (84.14)	5,000 (22)	2.6 (1.18)

# SUSPENSION DUCTILE IRON ANGLE CLAMP

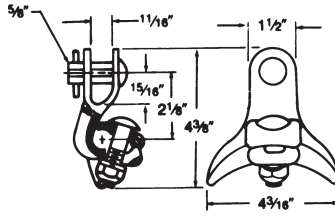
DUCTILE IRON

Intended for use in angle construction with galvanized steel overhead ground wire or copper and Copperweld® phase wire. Magnetic induction heating will occur.

**Material:** **Body and Keeper** - Ductile Iron, Galvanized  
**Hardware** - Hot Dip Galvanized Steel  
**Cotter Pin** - #302 Stainless Steel  
**Grommet** - Neoprene



Catalog Number 82860



Catalog Number 81460

## Product Data & Conductor Size

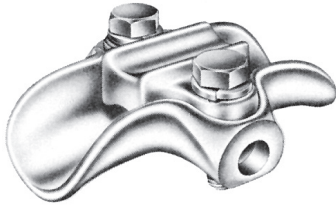
CATALOG NUMBER	CLAMPING RANGE INCHES (MM)		ULTIMATE BODY STRENGTH LBS. (KN)	MAX. TAKE-OFF ANGLE	APPROX. WT. EACH LBS. (KG)
	SMALL GROOVE	LARGE GROOVE			
814602000	.162-.25	.25-.60	7,000	0	1.5
828602000	(4.11-6.35)	(6.35-15.24)	(31)	60°	(.68)

NOTE: Recommended torque on 1/2" bolt—480 in. lbs.



DUCTILE IRON

# SUSPENSION DUCTILE IRON TRUNNION SUSPENSION CLAMP

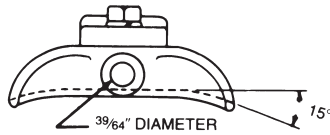
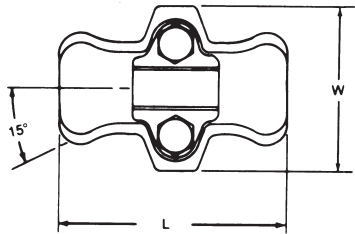


For ground wire applications with galvanized steel cable.

Designed for use on tangent suspension spans with horizontal or vertical post insulators.

Keeper is reversible for proper fit on different size conductors.

**Material:** **Body and Keeper** - Ductile Iron, Galvanized  
**Hardware** - Galvanized Steel  
**Anti-static spring** - #302 Stainless Steel (See Note 2)



## Product Data & Conductor Size

CATALOG NUMBER	CLAMPING RANGE INCHES (MM)	ULTIMATE BODY STRENGTH LBS. (KN)	DIMENSIONS INCHES (MM)			APPROX. WT. EACH LBS. (KG)
			L	W	J	
2706503001	.25-.56 (6.13-14.2)	2,800 (12)	5-1/4 (133.3)	3-7/8 (98.4)	1/2 (12.7)	2.50 (1.13)
2706513001	.50-1.06 (12.7-26.9)	2,800 (12)	5-1/4 (133.3)	3-7/8 (98.4)	1/2 (12.7)	2.75 (1.24)
2706523001	1.06-1.50 (26.9-38.1)	2,800 (12)	5-1/4 (133.3)	3-7/8 (98.4)	1/2 (12.7)	3.00 (1.36)

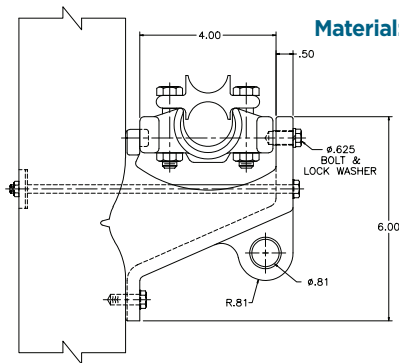
NOTES: (1) Recommended torque on bolts; 1/2"—480 in. lbs.  
 (2) Anti-static spring can be supplied by adding "ARIV" to catalog number. Example, TSCHT150ARIV.

# SUSPENSION DUCTILE IRON GROUND WIRE SUPPORT BRACKET

DUCTILE IRON  
GWB1R

Designed to accommodate most (aluminum or ferrous) trunnion type clamps. May be mounted with one bolt and lag screw or two bolts.

**Material:** Ductile Iron, Galvanized



## Product Data & Conductor Size

CATALOG NUMBER	MOUNTING HARDWARE MAX. DIA. INCHES (MM)		MOUNTING BOLT SPACING INCHES (MM)	ULTIMATE STRENGTH VERTICAL LBS. (KN)	APPROX. WT. EACH LBS. (KG)
	BOLT	LAG SCREW			
GWB1R	5/8 (15.88)	1/2 (12.70)	3-1/4 (82.55)	5,000 (22)	3.1 (1.40)

NOTE: Mounting hardware by others.