



Hubbell Enclosures – *Quality Performance*

Recognized around the globe for optimizing product design and value, Hubbell Enclosures are time-tested and continue to set the standard for outstanding performance and durability.

The Hubbell Enclosure product offering includes a full range of polymer concrete and fiberglass-reinforced polymer (FRP) underground enclosures, as well as a variety of fiberglass and composite above ground pads and enclosures.

Leading the way with the distinguished Quazite® brand, Hubbell Enclosures are built to protect and built to last.

Hubbell Power Systems – *Never Compromise*

With a global vision rooted in 115 years of innovation and the highest quality standards, Hubbell Power Systems leads the industry in its commitment to quality, safety, and convenience.

The premier manufacturer of a wide range of commercial & industrial products, Hubbell Power Systems has grown into a global enterprise. Strong leadership, technical expertise, and a commitment to unwavering quality have positioned us at the forefront of innovation in the design and manufacturing of enclosure products.



Commercial & Industrial Enclosures

Built to Protect

Hubbell Enclosures
3621 Industrial Park Drive • Lenoir City, TN 37771
Phone: 800-346-3062 or 865-986-9726 • Fax: 865-986-0585 • hubbellenclosures@hubbell.com

NOTE: Because Hubbell has a policy of continuous product improvement, we reserve the right to change design and specifications without notice.
©Copyright 2011 Hubbell Incorporated



Quazite® Underground Enclosures

Quazite® provides safe, rugged, and cost-effective protection for potentially dangerous equipment while providing peace of mind for utilities, contractors, and engineers around the world. The industry leader for applications in non-deliberate traffic areas, Quazite® precast polymer concrete and fiberglass-reinforced polymer (FRP) products have revolutionized the utility and construction industries.



PG Style Polymer Concrete Assembly

For any application requiring easy access to an underground service, this assembly can be used for a variety of purposes such as a splice box, pull box, or equipment enclosure, and they are stackable for increased depth. Should the grade level change, straight sides allow for easy adjustment.



PG Style Polymer Concrete Assembly

Versatile as splice box, pull box, equipment enclosure or any application. Available in a large range of sizes, these enclosures provide easy access to underground services.



PC Style Polymer Concrete Assembly

Straight sides allow for easy adjustment of box should the grade level change. All PC boxes are stackable and are available with gasketing.



Adjust-to-Grade FRP & Polymer Concrete Assembly

Hubbell offers several box styles featuring easy box adjustment, should the grade level change. Corrugated, PX, and PC box styles all feature adjust-to-grade options.



Corrugated Wall Style Assembly

A special combination of polymer concrete and fiber-reinforced polymer, along with the corrugated walls, give this style added strength and durability. Adjust-to-grade option is also available.



Round FRP & Polymer Concrete Assembly

This round enclosure features a special combination of polymer concrete and fiber-reinforced polymer. The shape also prevents a cover from falling into the box.

Quazite® Vaults

Providing the protection you depend on for transformers and power cables, Quazite® Underground Enclosures can be buried flush with the ground where they're literally out of sight. Dramatically improving the appearance of the surrounding landscape, Quazite® Enclosures are conveniently lightweight, but are strong enough to meet ANSI TIER rating requirements.



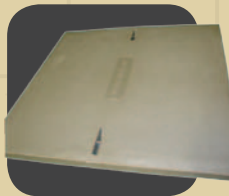
Switchgear Vault

Quazite® Underground Enclosures utilize both Polymer Concrete and FRP construction to guarantee a simple, lightweight, and lower-cost alternative to the heavy, expensive concrete vaults used for underground distribution switchgear. Hubbell's design ensures freedom from rust and corrosion in all environments.

Quazite®

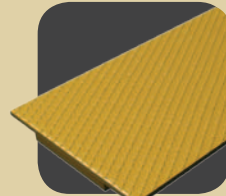
Hubbell Trench Covers

Hubbell Trench Covers offer premium versatility, with a unique blend of strength and maneuverability. Whether you go with a Hubbell Polymer Concrete Trench Cover or move up to a Lightweight Polymer Trench Cover, these Hubbell products offer convenience and dependability.



Polymer Concrete Trench Cover

Polymer Concrete Trench Covers, designed to fit most standard trench systems, are reinforced with a woven fiberglass mat and are rated for 300 lbs per square foot. They have all the features and material benefits of Hubbell enclosures.

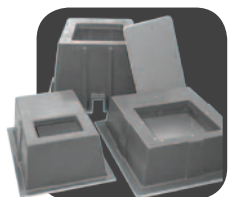


Lightweight Trench Cover

The reduced weight of Hubbell Trench Covers, combined with their tremendous strength, translates into speed, productivity, and increased system reliability.

Hubbell Pad-Mounted Equipment Solutions

As the premier American manufacturer of RUS-accepted box pads, ground sleeves, flat pads, pad vaults, and hill holders for the commercial and industrial market, Hubbell has a pad-mounted equipment solution for virtually any situation.



Box Pads

Hubbell box pads are designed to work with an array of pad-mounted electrical equipment. The large, open interior of a Hubbell box pad allows the installer to loop extra underground cable around the box interior.



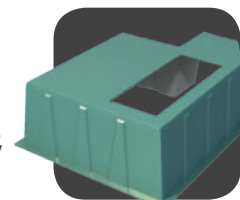
Box Pad

Box pads can be used as a base for a variety of situations, including traffic signal cabinets and transformer. The large, open interiors of Hubbell Box Pads allow the installer to loop extra underground cable around the box interior.



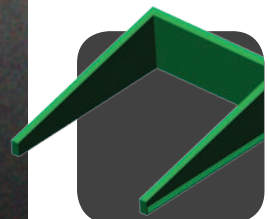
Ground Sleeves

Hubbell ground sleeves are engineered to be a high-strength, lightweight alternative to heavy poured-in-place concrete pad mounting systems. Constructed from either polymer concrete, or FRP, Hubbell's Ground Sleeves can meet challenge.



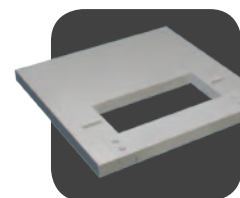
Chuted Wind Power Box Pad

Designed with wind power projects in mind, these box pads feature an integral tower tunnel to provide protection and easy installation of conduit and cable from the box pad to the tower foundation.



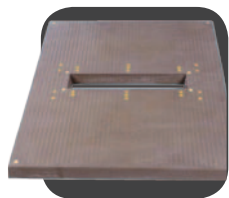
Hill Holders

Hill Holders are heavy-duty products designed to hold back dirt when installing a transformer on a hill, protecting equipment from potential washout.



Flat Pads

Hubbell-produced flat pads can support equipment weight without cracking or breaking. Unlike precast and poured-in-place pads, Hubbell Flat Pads are stable under loading during cold temperatures, aren't susceptible to damage caused by freeze and thaw cycles, and they are resistant to corrosion caused by weathering, road chemicals, and equipment lubricants.



Splitt-Pad®

The optional Splitt-Pad® design makes retrofit installations easy, and eliminates the need to disconnect service during installation.

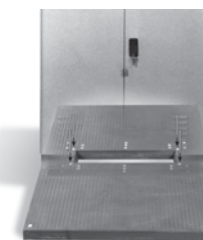
Hubbell Traffic Signal Cabinet Bases

Hubbell traffic signal cabinet bases and pads are constructed of strong polymer concrete. Hubbell's polymer concrete products are lighter and stronger than traditional concrete, while offering excellent weathering resistance.



Traffic Signal Cabinet Bases

Hubbell traffic signal cabinet bases are designed to work with an array of sizes and manufacturers of traffic signal cabinets. The base elevates the traffic signal cabinet to minimize damage and provide a convenient working height.



Equipment Pads

Hubbell flat pads and equipment pads are used to locate and support equipment weight without cracking or breaking. Unlike precast concrete, or poured-in-place concrete, Hubbell pads are stable under loading during cold temperatures, aren't susceptible to damage caused by freeze and thaw cycles, and are resistant to corrosion caused by weathering and road chemicals.



Hubbell Shelters

Hubbell Equipment Shelters aren't just easy to install, they're also durable, secure, and flexible. Hubbell offers a wide variety of protective housings for all types of equipment, including primary switchgear, transformers, metering, auxiliary generators, and pumps.



Pad-Mounted

Designed as a protective housing for all types of equipment, including primary switchgear, transformers, metering, auxiliary generators, and pumps, Hubbell Pad-Mounted Enclosures are available in 26 sizes, with six different door-opening configurations for easy access to the valuable equipment that you want and need protected.

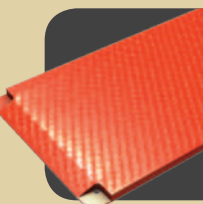


Walk-In

Similar to smaller Pad-Mounted Enclosures, these larger walk-in style enclosures can be used for a multitude of housing applications, such as Substation Control or Relay/Control Panel houses. They are designed to withstand 120 mph winds, as well as heavy ice and snow loadings, without the need for additional reinforcements.

Comcore® RoadPlate & Shoring System

Comcore® RoadPlate is a lightweight modular system that possesses the ability to provide both covering for holes and trenches while also doubling as shoring when needed. Comcore® RoadPlate is an engineer-certified replacement for heavy one-inch steel plates.



RoadPlate

Comcore® RoadPlate offers a lightweight modular system that provides flexibility, expandability, and brawn. These versatile RoadPlates can also be used as a two-sided trench shield, a four-sided pit shield, a shield for crossing utility services, an extra-light shield for backyard use, and as shoring with both mechanical and hydraulic jacks.



Shoring System

The Comcore® Shoring System is composed of Hubbell RoadPlate, and consists of modular components that offer multiple shoring capabilities in a single system. This system utilizes new lightweight materials that provide safety, flexibility, increased installation speed, and can be quickly modified as time and job requirements dictate.