



# NEO X LED LUMINAIRE

..... *The Next Generation in Hazardous Area LED Lighting* .....





# NEO X

NEO X



Follow us



# The **NEO X** Bulkhead

## One Range, Two Locations



**Use the NEO X Bulkhead for both localised and emergency illumination.**

The Chalmers NEO X bulkhead represents the latest addition to the groundbreaking X Series of LED lighting. Boasting an impressive output, the NEO X can be utilised across any Zone 1/21 application for localised illumination (O2L and O4L versions), and for emergency egress lighting (O1L and O2L versions).

The optional hot swap battery allows the maintainable components to be easily accessible and ensures that the ground breaking NEO X is suitable for global use in any harsh or hazardous environment.







# Compact, Mighty & Flexible

Where space is at a premium this universal bulkhead design can be added to outdoor or indoor spaces as an alternative to linear fittings. With a certified temperature range from  $-55^{\circ}\text{C}$  up to  $+55^{\circ}\text{C}$  the NEO X is the bulkhead for every environment and application. A range of outputs from 1500lm up to 4300lm and a variety of optic choices mean the perfect illumination solution can be found using only the NEO X range.

- **$-55^{\circ}\text{C}$  to  $+55^{\circ}\text{C}$  full ambient range**
- **Range of outputs from 1500lm up to 4300lm**
- **Effective and compact** alternative to a linear luminaire
- **RCG entries and hot swap battery** options available
- **Exit sign kit** option available

# NEO X





# Innovation & Product Development

We have been proudly manufacturing our extensive range of Chalmit lighting products in the UK since 1910.

Originally born from the demand for lighting and electrical products to the burgeoning shipbuilding industry on the River Clyde. Chalmit now offers market leading luminaires to the global market, and remains at the forefront of technological innovation.



At our state of the art facility we constantly strive to develop new products to meet the demands of our customers and markets. However, we also know that within our core product range lie many exceptional products. We develop replacements for these to offer the latest technology that remains robust and reliable.

The **NEO X** has been developed to be an exciting successor to our trusted NexLED and Nevis ranges of bulkhead luminaires.



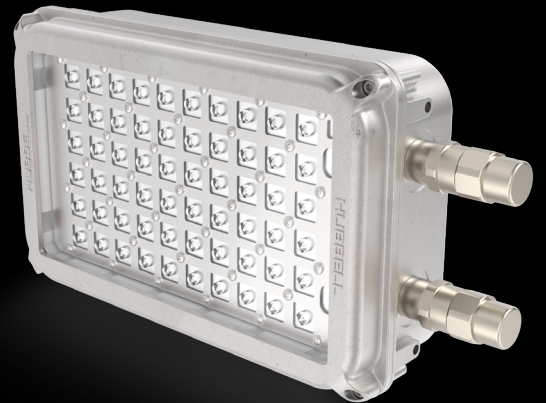
# RCG Compatibility

## The Perfect Pairing

Hubbell strives to make our ranges as convenient and as user-friendly as possible. Autonomy with other products across our family of brands helps you maximise their potential whilst making purchasing and support seamless. Our industry experts are always on hand when you need them.

The perfect pairing for the NEO X is the Hawke International RCG Gland. The NEO X has a built in entry which, used with the RCG, allows a cable to be extended without the need for a junction box.

Reduce Downtime  
Reduce Expenses  
Easy Maintenance



### Hawke RCG

The 501/RCG Cable Gland was developed to combine the features of our marketing leading Cable Gland range with the Plug and Play benefits of a connector. The RCG Coupler allows an installer to extend an existing piece of cable without the need to use a junction box.

Visit [www.hubbell.com/hawke](http://www.hubbell.com/hawke) for more information







## A Space Saving Alternative to Linear Lighting

Where space is at a premium, this universal bulkhead design can be added to outdoor or indoor spaces as an alternative to linear fittings.





# NEO X

## A Brighter Path

With a certified temperature range from -55°C up to +55°C the NEO X is the bulkhead for every environment and application.

A range of outputs from 1500lm up to 4300lm and a variety of optic choices mean the perfect illumination solution can be found using only the NEO X range. The addition of an exit sign decal, affixed directly onto the diffuser, provides effective egress illumination. Mounted above doorways, the NEO X will safely and effectively mark exit routes.



*The NEO X is available in a choice of two finishes, marine grade aluminium or epoxy painted black option, to compliment any location.*



# NEO X

Ex db eb Bulkhead

The latest Zone 1 LED X Series luminaire, the NEO X bulkhead focuses on the needs of the user by combining multiple lumen outputs with long term maintenance benefits. Providing a market leading range of photometric outputs using our X-series optics to efficiently illuminate any Zone 1/21 application, the NEO X is a true successor to the NexLED and Nevis ranges of bulkhead luminaires.

With a certified temperature range from -55°C up to +55°C the NEO X is the bulkhead for every environment and application. The optional benefit of a hot swap battery with excellent IP allows the maintainable components to be easily accessible, and ensures that the ground breaking NEO X is suitable for global use in any harsh or hazardous environment.



**Mounting Options**  
Bulkhead, Handrail

## Standard Specification

NEO X Ex db eb LED Bulkhead

Type of Protection	Ex db eb (Flameproof, Increased Safety) Ex tb (Dust Protected Enclosure)
ATEX Classification	Group II Category 2 GD
Area Classification	Zone 1 and 21 areas to EN 60079-10-1 and EN 60079-10-2 with installation to EN 60079-14
Certificate	EU Type Examination Certificate CML22ATEX1473X IECEx Certificate of Conformity IECEx CML 22.0070X UK Type Examination Certificate CML 22UKEX1474X
Coding	Ex db eb IIB+H2 T* Gb Ex tb IIIC T76°C Db IP6X - Refer to table for T rating and Ambient
Enclosure	LM6 Marine grade aluminium body with UV resistant Polycarbonate diffuser
Entry	4 x M20 cable entries (c/w 3x plastic Ex plugs & 1x travel plug)
Termination	3 core 4mm <sup>2</sup> max conductor with looping, Emergency 4 core 4mm <sup>2</sup> max conductor with looping
Installation	4 x M6 Mounting holes (supplied with flush mount brackets)
Control Gear	Electronic Driver
Optical Distribution	Wide beam
Colour Temperature (CCT)	5000K (Cool White) Other temperature and colour options are available.
Colour Rendering Index (Ra)	>80
Maintenance	Front access to gearbox lid with 4x M5 retained screws
LED Lifetime @ 55°C Ambient	L70 > 200,000hrs
System Life @ Ambient	120,000hrs @ 25°C. (100,000hrs for EM & EMI)
Battery	3 Cell, 3.6V, Ni-MH, 3.7Ah
Emergency Duration	3 Hour Duration (O1L - 32% output, O2L - 21% Output)
Impact Protection	IK10
Ingress Protection	IP66/67 to EN 60529
Surge Protection	6kV
Electrical Supply	110-277V AC, 50/60Hz. 127-250V DC 220-240V AC for EM

## Features

- ◆ Highly Energy Efficient >120lm/W up to 135lm/W (Non-Emergency)
- ◆ Available with asymmetric walkway optic, minimising light pollution
- ◆ Optional hot swap battery for more efficient maintenance
- ◆ 120,000 maintenance free hours at 25°C (100,000hrs for EM and EMI)
- ◆ Exit sign options
- ◆ Small footprint for areas of restricted space
- ◆ Lumen options from 1500-4300

Std. Cat No.	Delivered Output	Power Consumption	Tclass	T°C (Dust)	Ambient °C	Weight
<b>NOXB/01L/LE</b>	1550 lm	11.5W	T6	T76	-55 to +55	6kg
<b>NOXB/02L/LE</b>	2311 lm	17.5W	T6	T76	-55 to +55	6kg
<b>NOXB/04L/LE</b>	4363 lm	35W	T5	T76	-55 to +55	6kg
<b>NOXB/01L/LE/EMI</b>	1550 lm	15W	T5	T76	-25 to +55	7.0kg
<b>NOXB/02L/LE/EMI</b>	2311 lm	20.5W	T5	T76	-25 to +55	7.0kg

Options - Suffix to Catalogue No.

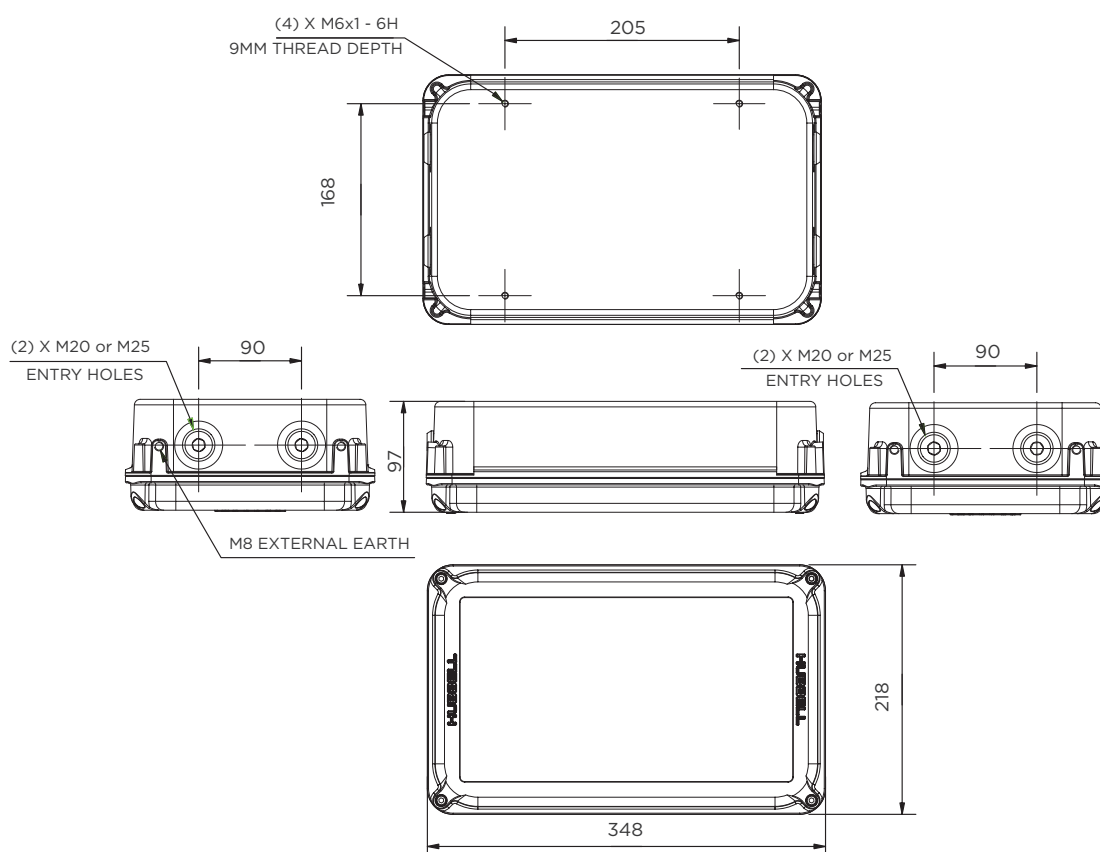
<b>/M25</b>	M25 Cable Entries
<b>/BP</b>	Nickel plated brass plugs (x3)
<b>/M</b>	Medium Beam Distribution (≈5% reduction in output)
<b>/ASL</b>	Asymmetric Beam along Length - Walkway Distribution (≈11% reduction in output)
<b>/DM</b>	DALI Dimmable driver (04L Non-Emergency Version only)
<b>/P</b>	Enclosure Epoxy Powder Painted (RAL 9005)
<b>/EM</b>	Hot Swap Battery (Only available with 01L & 02L versions)
<b>/BNI</b>	Battery Not Included (Not available with /EMI versions)
<b>/3K</b>	3000K (Warm White) LEDs *
<b>/4K</b>	4000K (Neutral White) LEDs *
<b>/SC</b>	6mm <sup>2</sup> max Conductor Looping
<b>/EL</b>	Extra live termination facility (to match emergency circuit)
<b>/RCG</b>	RCG (Rapid connection gland) single entry option, 4 pin Termination
<b>/RCGL</b>	RCG (Rapid connection gland) looping at one end option, 4 pin Termination

\* may be subject to minimum order quantity

Accessories *order separately*

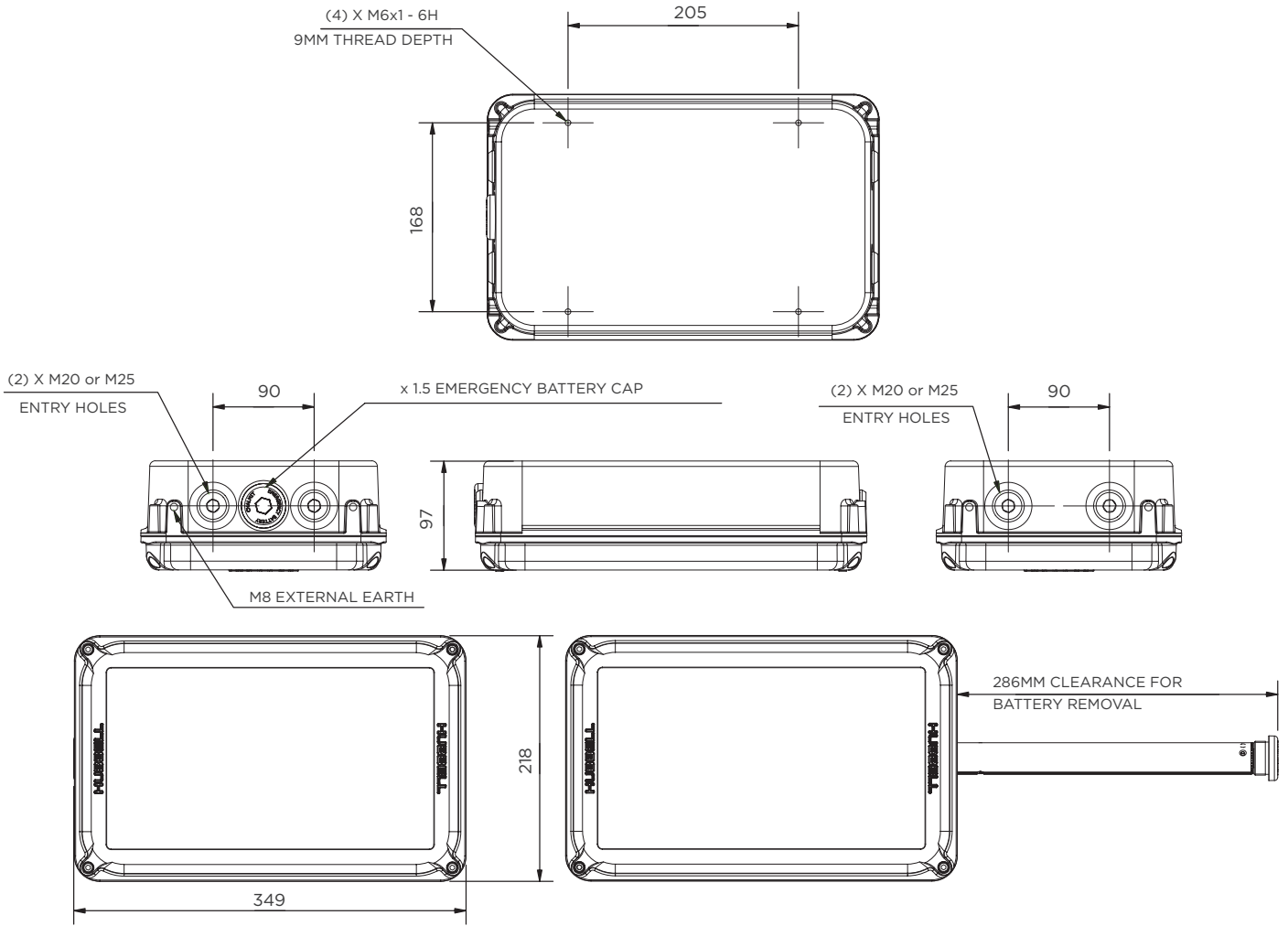
	Order Code
Up, Down, Left, Right & Running Man exit sign kit	<b>SNOXB1-0001</b>
“EXIT” text exit sign	<b>D9001-0035</b>
Hot Swappable Battery Assembly (not suitable for /EMI versions)	<b>SNOXB1-0002</b>
120 Degree Wall Mount Bracket Assembly	<b>SNOXB1-0004</b>

## Standard Version

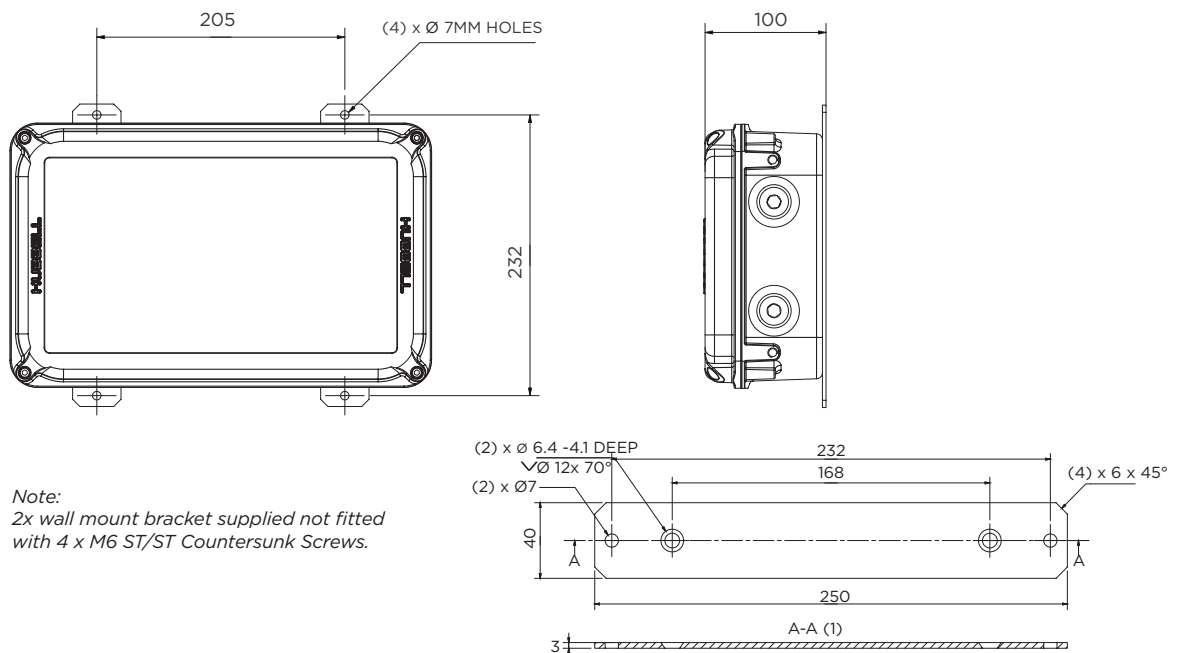




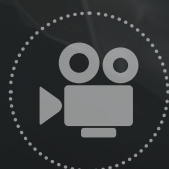
## Emergency Version



## Flush Mount Bracket



# NEO X NEO X NEO



For a truly interactive introduction to our revolutionary **NEO X** luminaire visit [www.hubbell.com/chalmit/en/NEO-X](http://www.hubbell.com/chalmit/en/NEO-X)





# SUSTAINABILITY

## At Hubbell

At Hubbell we are committed to reducing the environmental impact of our operations.

We are continually developing products and processes that support sustainability and offer energy efficient solutions for our customers and partners.

Our focus remains addressing and managing the risks associated with climate change and we are committed to facilitating a sustainable future.

For more information visit us at [www.hubbell.com/hubbell/en/sustainability](http://www.hubbell.com/hubbell/en/sustainability)

### Our ESG Goals



**10%**  
Reduction in  
GHG Emissions  
*By 2025*



**10%**  
Reduction in  
Water Consumption  
*By 2025*

Hubbell have been recognised as **one of the most ethical companies in the world**

2023 | WORLD'S MOST  
**ETHICAL**  
COMPANIES<sup>®</sup>  
ETHISPHERE  
3-TIME HONOREE



Follow us



## WHERE WE ARE

- Expanded public ESG disclosures, including alignment with leading sustainability frameworks
- Established goals for reducing greenhouse gas emissions and water consumptions
- Launched sustainability website and increased employee awareness of ESG topics
- Hired sustainability and diversity leaders to manage and drive ESG efforts
- Signed the Paradigm for Parity pledge and were recognized as one of the 2021 World's Most Ethical Companies
- Enhanced focus on products that enable sustainability for customers and value chain



## WHERE WE'RE HEADED

- Publishing an inaugural sustainability report and enhancing climate change disclosures
- Expanding and refining company wide sustainability strategy
- Formalizing Hubbell's sustainability governance and ESG policies
- Pursuing product stewardship and circular economy opportunities
- Promoting sustainability and managing risks in Hubbell's supply chain
- Developing new environmental and social targets
- Increasing supplier diversity and engaging with vendors on ESG topics w



### Social Responsibility

- Host two Employee Inclusion Groups: Women Advancing Their Careers At Hubbell (WATCH) and Multicultural Men (MCM)
- Hubbell Foundation donated over \$1 million in 2020
- Employee development formalized through Hubbell University



### Environmental Stewardship

- Track environmental performance including greenhouse gas emissions, water and waste
- Audited largest facilities for energy reduction opportunities and implementing efficiency initiatives
- Launched a Hubbell Sustainability and Infrastructure Management Handbook which provides guidelines on improving the efficiency and sustainability of our facilities



### Products With Impact

- Offer products that support renewable energy infrastructure
- LED lighting products allow for greater energy efficiency
- All products are designed with reliability and safety in mind



# The **X SERIES** Has Evolved

A DEDICATED ENERGY SAVING LED LUMINAIRE FOR EVERY APPLICATION



## Protecta **X**

ZONE 1 and Industrial Linear LED



## Evolution **X**

ZONE 1 LED Floodlight



## Arran **X**

ZONE 2 and Industrial LED Floodlight



## Eclipse **X**

ZONE 2 and Industrial LED Highbay



## NEO **X**

ZONE 1 LED Bulkhead

Safety, reliability, ease of installation and maintenance is at the heart of our X Series design philosophy. We utilise the latest LED chip technology, to enable us to guarantee optimum light output performance and increased service life. We understand the challenges of extreme environments and constantly push boundaries to provide real and innovative solutions.

Be the first to know about our latest X Series innovations at [www.chalmit.com](http://www.chalmit.com)



# **X SERIES**

**United Kingdom**

Hubbell UK, Ashton Rd, Bredbury Park Industrial Estate  
Bredbury, Stockport, SK6 2QN  
Tel: +44 (0)141 882 5555 Email: [getintouchuk@hubbell.com](mailto:getintouchuk@hubbell.com)

**U.S.A.**

Killark Electric, 2112 Fenton Logistics Park Blvd  
Fenton, MO 63026  
Tel: +1 (314) 531 0460 Email: [killarkinfo@hubbell.com](mailto:killarkinfo@hubbell.com)

**Middle East**

Building No. 5EA Office No. G03  
Dubai Airport Free Zone (DAFZ) PO Box 23529 Dubai UAE  
Tel: +971 (0)4 609 1222 Email: [middle-east@chalmit.com](mailto:middle-east@chalmit.com)

**Asia Pacific**

130 Joo Seng Road #03-02 Olivine Building Singapore 368357  
Tel: +65 6282 2242 Email: [asia-pacific@chalmit.com](mailto:asia-pacific@chalmit.com)

**Korea**

512 Hyosung Intellian 681-3 Deungchon Dong  
Kangseo-Ku Seoul 157-030 Korea  
Tel: +82-2-2063 3719 Email: [korea@chalmit.com](mailto:korea@chalmit.com)

**China**

Room H/1, 18F, No. 728 Pudong Avenue  
Shanghai International Ocean and Finance Building  
Shanghai 200120 P.R. China  
Tel: (86 21) 3392 6550 ext. 318 Email: [china@chalmit.com](mailto:china@chalmit.com)



A Hubbell brand

©2024 Chalmit. All rights reserved.  
Hubbell and the Hubbell logo are registered trademarks or trademarks of Hubbell Incorporated. All other trademarks are the property of their respective owners.  
Hubbell UK, Ashton Rd, Bredbury Park Industrial Estate, Bredbury SK6 2QN  
[www.hubbell.com/chalmit](http://www.hubbell.com/chalmit) | [getintouchuk@hubbell.com](mailto:getintouchuk@hubbell.com) | +44 (0)141 882 5555

HHI-CHL-CAT-UK-02341