

# Pro Control™ Class 69ES Pressure Switch for water systems

The Hubbell Pro Control pressure switch delivers rugged quality and reliable control for professional water well installers. Built for direct use on all types of pumps up to 5 HP or control circuit use for magnetic starters on larger pumps. Advanced features make Pro Control switches standard equipment on many pumps.

## Features

- 100% silver contacts resist corrosion to provide superior electrical connections
- Extra-wide diaphragm orifice reduces clogging
- Durable electroplated chassis is exceptionally corrosion resistant for longer life.
- Roomy wiring space
- Visible contacts for easy inspection
- Enclosed, modern switch mechanism
- Rugged, nonmetallic cover
- Two large ground screws
- Replaceable contact cartridge, refer to page 3
- UL Listed, file #14861
- CSA Certified, file #LR36854
- Contact cartridge replacement kit can be replaced with the switch in place



**Hubbell's Pro Control pressure switch delivers rugged quality and reliable control**

## 69ES Water Systems

Min. Close Cut-in	Max. Open Cut-out	Differential Range	Pressure Setting Adjustment	Horsepower			Factory Settings	NEMA 1 General Purpose Cat. No.
				1 Phase		3 Phase		
				120V	240V	240V		
10 psi	80 psi	15-25 psi	See table (below)	1.5	2.0	3.0	30-50	69ES1

## 69ES Modifications

Description	Catalog Number Suffix - Add Suffixes in Order shown.
1/4" quick connects (load terminal only)	A
Pulsation orifice	B
Two rubber grommets for 1/2" conduit hole	G
Pipe Fittings:	
1/4" male NPT	2A
3/8" male NPT	2J
Straight mini barb for 1/4" plastic tube	2M
Special pressure settings: Suffix "Z" is followed by setting Example: 69ES1Z2040	Z

\* See Instruction Sheet included with switch for manual adjusting instructions.

# PRO CONTROL™ CLASS 69ES PRESSURE SWITCH

## Pressure Adjustment Settings

Nut A-Turn clockwise to increase and counterclockwise to decrease pressure range (both cut-in and cut-out).

## Differential adjustment

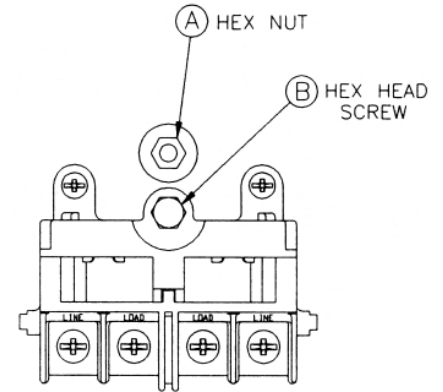
Screw B-Turn clockwise to increase and counterclockwise to decrease cut-out pressure.

NOTE: Differentials shown on the 69ES Water Systems table (page 1) are averages only.

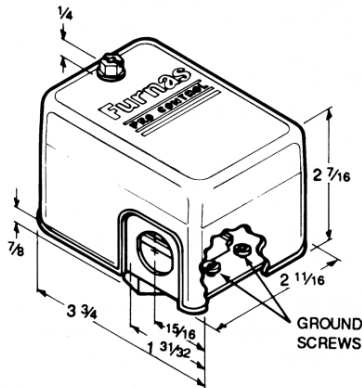


## PSI Table

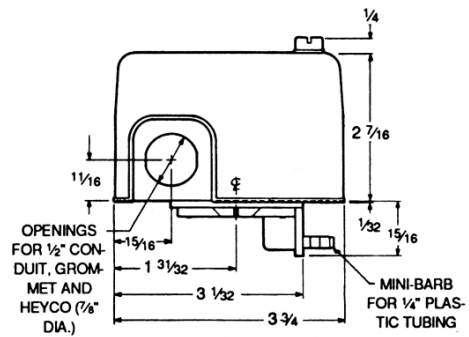
Cut-in A	Cut-Out B	
	Min.	Max.
10	25	35
15	30	40
20	35	45
30	45	55
40	55	65
50	65	75
60	75	80
65	80	80



## 69ES Dimensions

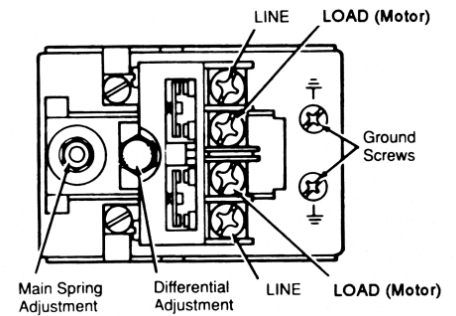


## 69ES Dimensions with 90°



## Electrical Ratings

Cat No.	Control Circuit	Horsepower			
		1 Phase		3 Phase	DC
		112V	240V	240V	32V-230V
69ES1	A600	1.5	2.0	3.0	1/4
69ES2	A600	2.0	3.0	5.0	1/2



## Connection Diagram

## Replacement Parts

Description	Catalog No.
Contact cartridge complete with contacts	<b>75ES1</b> (for 69ES1) <b>75ES2</b> (for 69ES2)
Grommets for 1/2" conduit hole	<b>D00492001</b>
Plastic pulsation plug	<b>D20909001</b>



### Replacement contact cartridge kit

Replaceable contact cartridge swaps out quickly. Complete with contacts. Unique design allows replacement without removing the switch from the pump to reduce maintenance costs.