

Brief introduction of switchgear

Reliable-40.5kV SF6-insulated compact switchgear

Application place

Reliable-40.5kV SF6-insulated Ring Main Unit is designed and manufactured in accordance with GB and IEC standard. It adopts a fully insulated and sealed structure and suitable for severe environments such as dirt, salt spray, humidity, and high altitude. A variety of solutions could meet more demanding requirements.

Safety features

The cabinet is equipped with high quality mechanical locking and electrical interlocking .

The structure of gas compartment and cable compartment meets the requirements of 20kA/1s arcing.

The cabinet has good grounding continuity.

Protection level of stainless-steel gas compartment:IP67。

No need gas supplement if no faulty during life cycle.



Brief introduction of switchgear

Reliable-40.5kV SF6-insulated compact switchgear

Flexible combination

Could use independent unit scheme combination , and share cabinet combination also can be realized.

Load switch, circuit breaker, combined electrical appliance and PT can be freely combined.

Coil, Auxiliary contacts can be flexibly prepared according to the customers requirements.

Operating condition

Altitude: ≤5000m (special note is required when operating altitude of equipment exceeds 2000m).

Ambient temperature : Highest temperature +50°C, lowest temperature -50°C, Average value within 24h ≤35°C. Ambient humidity: 24h relative humidity average ≤95%, monthly relative humidity average ≤90%.

Electromagnetic interference : The amplitude of electromagnetic interference induced in the secondary System is less than or equal to 1.6kV.

Installation condition

There is no explosive and corrosive gas in the surrounding air, and there is no frequent severe vibration or impact in site.

Note : Please consult with our company for customization when the environment conditions above are exceeded.

Technical Parameters

Reliable-40.5kV SF6-insulated compact switchgear

Technical Specification	Unit	C Module	F Module	V Module
		Load Switch	Fuse Combination	Vacuum Circuit Breaker
Rated Voltage	kV	36/40.5	36/40.5	36/40.5
Power Frequency Withstand Voltage	kV	70/95	70/95	70/95
Isolating Fracture	kV	80/118	80/118	80/118
Lightning Impulse Withstand Voltage	kV	185/215	185/215	185/215
Rated Current	A	2500/2000/1250	63	2500/2000/1250
Short-circuit Breaking Current	kA		20	20/20
Rated Closing Capability	kA			50/50
3S Short-time Withstand Current	kA	20/20		20/20
Mechanical Life	times	5000	5000	10000

Application of switchgear



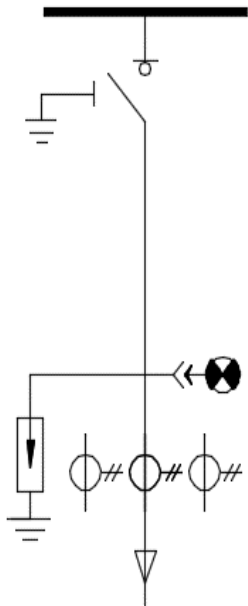
Reliable-40.5kV SF6-insulated compact switchgear



Function Unit Description

Reliable-40.5kV SF6-insulated compact switchgear

C-Load switch module

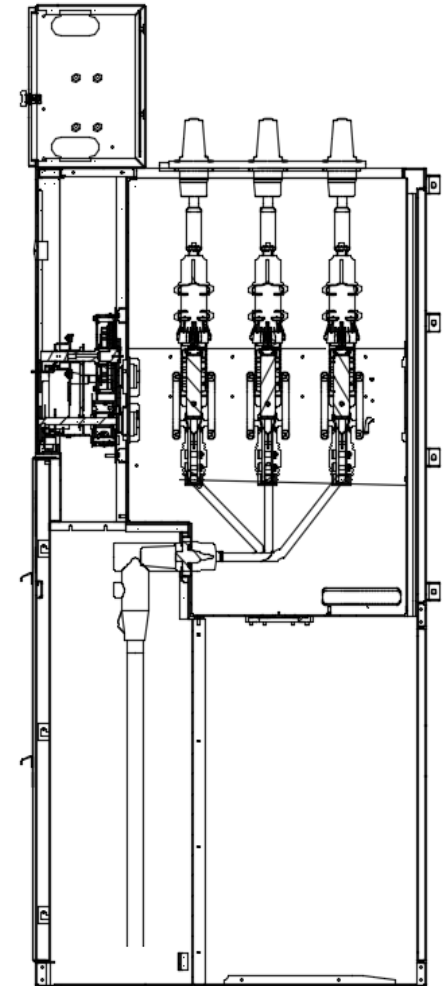
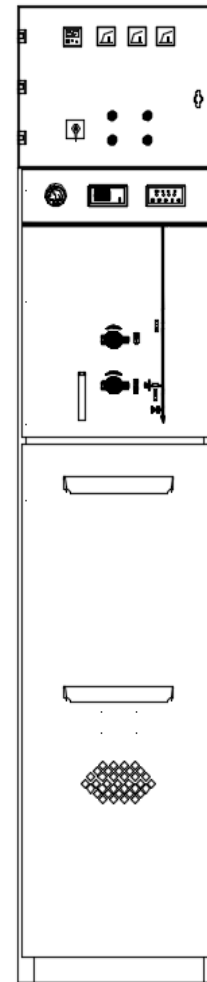


Standard configuration

- Gas tank
- Three-station load switch
- Three-station load switch operating mechanism
- Density meter with alarm contact
- Potential indicator
- 630A Internal bus
- Cable room with interlock with ground switch
- Low voltage chamber

Optional accessories

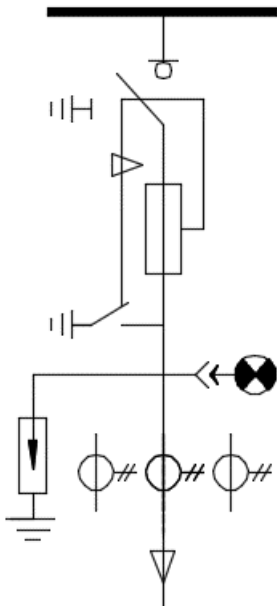
- Incoming line arrester
- Front cable accessories
- Short circuit and ground fault indicator
- Current transformer



Function Unit Description

Reliable-40.5kV SF6-insulated compact switchgear

F-Fuse combination module

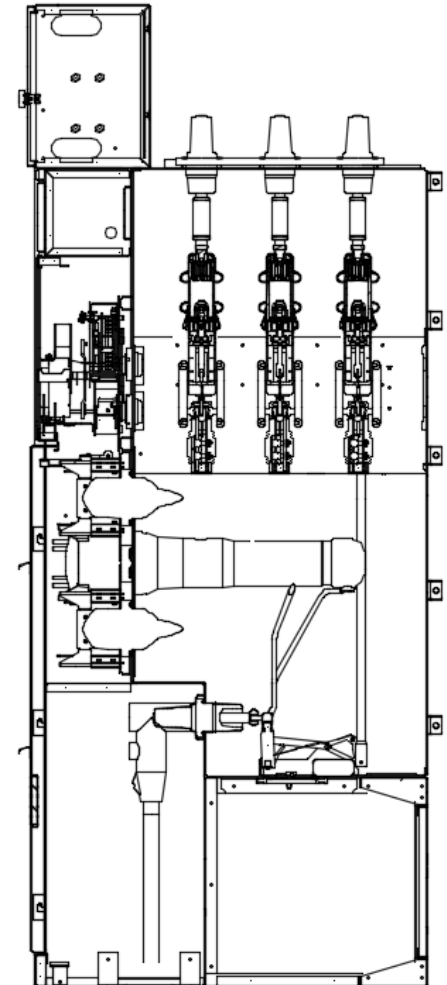
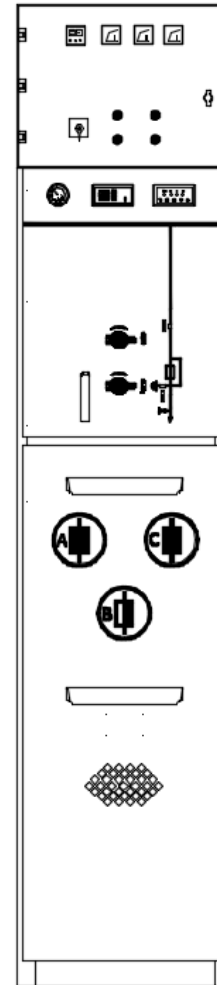


Standard configuration

- Gas tank
- Three-station load switch
- Three-station load switch operating mechanism
- Density meter with alarm contact
- Potential indicator
- 630A Internal bus
- Cable room with interlock with ground switch
- Low voltage chamber

Optional accessories

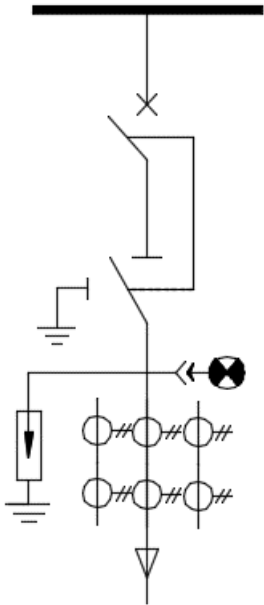
- Incoming line arrester
- Front cable accessories
- Short circuit and ground fault indicator
- Current transformer
- Fuse



Function Unit Description

Reliable-40.5kV SF6-insulated compact switchgear

V-Circuit breaker module



Standard configuration

- Gas tank
- 630A vacuum circuit breaker
- Vacuum circuit breaker with manual operation mechanism
- Three-station isolated ground switch
- Three-station isolated ground switch with manual operation mechanism
- Microcomputer integrated protection device
- Density meter with alarm contact
- Potential indicator
- 630A Internal bus
- Cable room with interlock with ground switch
- Low voltage chamber

Optional accessories

- Incoming line arrester
- Front cable accessories
- Short circuit and ground fault indicator
- Current transformer

