



Hubbell Industrial Controls, Inc.

Specification

**4225**

February 2006  
Repl.: Nov. 1986  
Schedule E5

## QUICK BREAK POWER LIMIT SWITCH

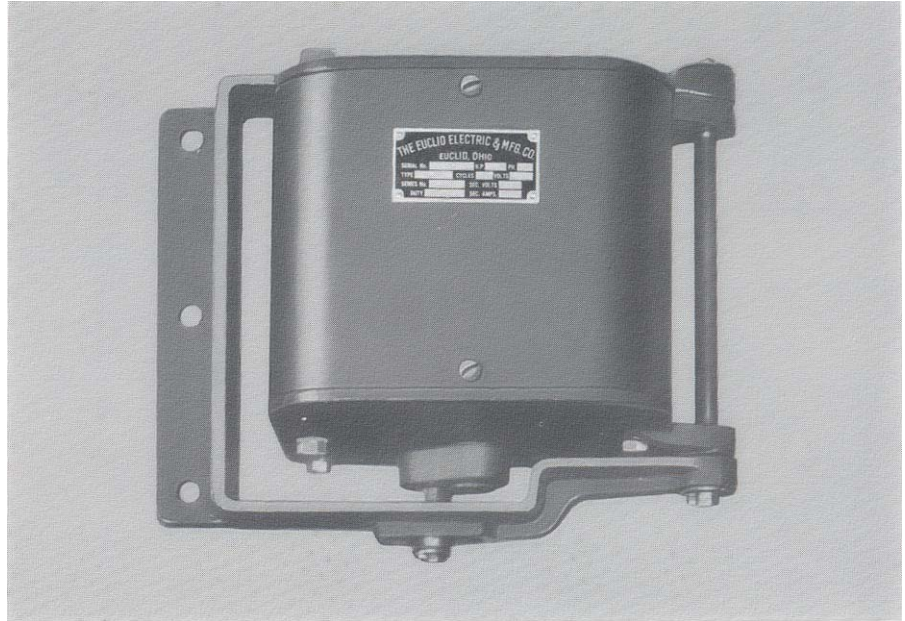
### General Information

Euclid quick break limit switches for hoists are normally closed by the weight of the striking lever. The movement of the lever on its upward travel, when engaged by the hoist hook block on its upward travel, causes the switch to quickly break the circuit to the motor with very little upward movement of the crane hook. The switch is automatically reset by the weight of the striking lever when the hook is lowered.

- ◆ NEMA & CEMA ratings 1, 3, 4, 9 general purpose, weather proof, watertight, explosion-proof enclosures.
- ◆ Mill duty construction.
- ◆ Reversible finger tips and segments for longer life.
- ◆ Easy maintenance and access to fingers, contact tips, drum segments and tension springs.
- ◆ Moving and stationary contacts are made from hard drawn copper.
- ◆ Automatic reset.

### Application

Euclid quick break hoist limit switches are used with reversing drum and magnetic controllers on cranes and hoists, either as a main line limit switch or as a pilot circuit limit switch to operate magnetic contactors in main line motor circuits.



### Description

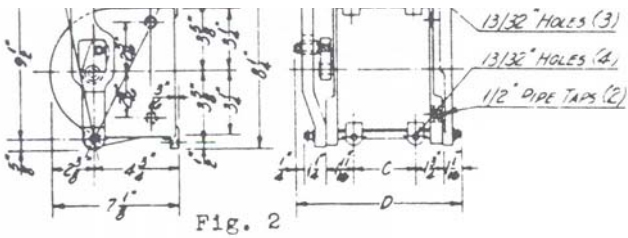
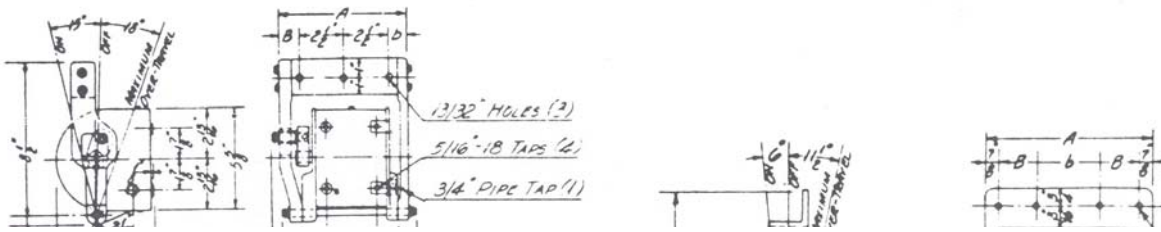
There are two general types of main line limit switches - - the standard and the plugging type. The plugging limit switch utilizes the motor to stop the upward travel by plugging the motor when the limit switch is tripped. This is accomplished by the switch quickly reversing two lines of the motor, plugging it to a stop and then lowering the hook until the limit switch resets. Some motors require plugging resistors when such a limit switch is

used. Consult our representative or the factory for recommendations on such applications.

All switches in the line are furnished with reversible finger tips that can be easily replaced. The drum segments are easily replaced. Both the finger tips and segments are made of hard-drawn copper. Tension is maintained on the fingers by means of high quality tension springs that are easily replaced.

AC & DC HOIST MOTOR APPLICATIONS					
CATALOG NUMBER	MAXIMUM HORSEPOWER RATINGS				NO. OF POLES
	AC		DC		
	220 VOLTS	440-550 VOLTS	115 VOLTS	230 VOLTS	
NON-PLUGGING DUTY					
4225-LS-900	3	3	1	2	3
4225-LS-1950B	10	10	2.5	5	3
4225-LS-312	25	25	5	10	3

**APPROXIMATE DIMENSIONS  
(NEMA 1 ENCLOSED)\***



**Three Pole Non-Plugging Type – A.C.**

4225-LS-900	1	8-7/16"	1-13/16"	1-5/8"	3-15/16"	9-1/8"	-----	-----	-----	2 Pounds	20
4225-LS-1950B	2	9-3/4"	2-3/8"	-----	4-1/2"	10-1/4"	-----	-----	-----	5 Pounds	34
4225-LS-312 •	3	11-3/4"	3"	4"	6-1/4"	13"	4-1/4"	4-1/4"	8-1/2"	30 Pounds	60

- Purchaser to provide striking plate & additional weight at 12" radius to reset.
- \* NEMA 3, 4, 9 enclosure dimensions available upon request.



**Hubbell Industrial Controls, Inc.**  
 a subsidiary of Hubbell Inc.  
 4301 Cheyenne Dr., Archdale, NC 27263  
 Telephone (336) 434-2800 • FAX (336) 434-2803  
<http://www.hubbell-icd.com>  
[sales@hubbell-icd.com](mailto:sales@hubbell-icd.com)