

Class 53 Master Switch

Catalog & Price List • January 2021, Replaces May 2020



Class 53

Class 53 Master Switches are used to provide single handle pilot control of hoists, cranes, oven pushers, car movers and other equipment requiring speed steps of wound rotor or direct current motors.

A special duplex control accessory is available to provide single handle control of two master controls to provide diagonal motion.

They satisfy applications requiring a definite sequence of opening and closing multiple pilot contacts.

Class 53 Master Switch Standard Features Include:

- Double Break Contacts
- Compact Design
- Momentary or Maintained Contacts
- UL Listed
- CSA Certified

Maintained Contacts - Class 53

DISCOUNT CODE FP

Speeds	Contacts NO (poles)	Contacts Closed Forward	Contacts Closed Reverse	NEMA 1 Enclosure	
				Catalog No.	Price
1	2	1	1	HCC2542	\$4,208
2	3	2	2	HCC2374	\$4,392
3	4	3	3	HCC3331	\$4,532
4	5	4	4	HCC3330	\$4,716
5	6	5	5	HCC1950	\$4,856

Momentary Contacts - Class 53

DISCOUNT CODE FP

Speeds	Contacts NO (poles)	Contacts Closed Forward	Contacts Closed Reverse	NEMA 1 Enclosure	
				Catalog No.	Price
1	2	1	1	HCC2123	\$4,580
2	3	2	2	HCC2268	\$4,764
3	4	3	3	HCC2060	\$4,904
4	5	4	4	HCC4130	\$5,084
5	6	5	5	HCC1188	\$5,228

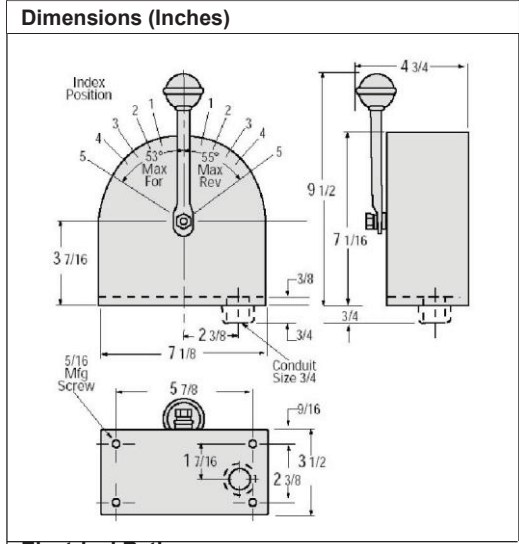
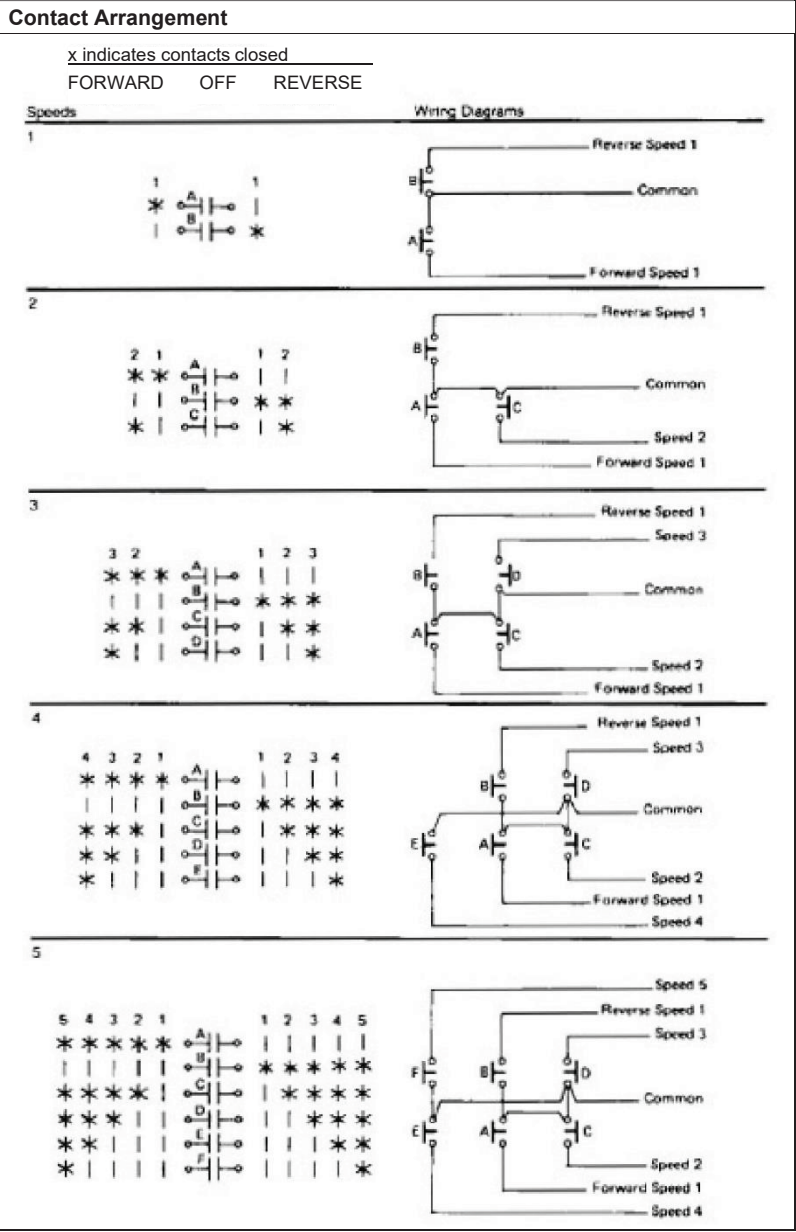
Replacement Parts - Class 53

DISCOUNT CODE FS

Description	Catalog No.	Price
Contact Board Contacts Included	HCL14112	\$274



Wiring



Electrical Ratings

Volts	Make	Break
NEMA A600 10 Continuous Amps (AC)		
120	60	6.0
240	30	3.0
480	15	1.5
600	12	1.2
VA	7200	720.0
NEMA P600 5 Continuous Amps (DC)		
125	1.10	1.10
250	0.55	0.55
301-600	0.20	0.20
VA (300V or less)	138.00	138.00



Hubbell Industrial Controls, Inc.
 a subsidiary of Hubbell Incorporated
 4301 Cheyenne Drive, Archdale, NC 27263
 Phone (336) 434-2800 | Fax (336) 434-2801
 www.hubbell.com/hubbellindustrialcontrols/en
 sales@hubbell-icd.com

Special Master Switches - Class 53 Discount Code FP

5 speed with LV (NC) circuit

NEMA 1 Enclosure

Catalog No.	Type of Operation	Price
HCC3258	Spring Return	\$5,640
HCC2138	Maintained	\$5,316

5 speed with LV & M (NC & NO) circuit

NEMA 1 Enclosure

Catalog No.	Type of Operation	Price
HCC1953	Spring Return	\$5,970
HCC1968	Maintained	\$5,646

Consult Factory for Wiring Diagrams

