

Class 6820 & Class 6823 Lifting Magnet Disconnects

Catalog

20



CONTENTS

Descriptions.....	Page
General Information.....	2
Technical Specification.....	2-3
Ordering Information.....	2-3
Application Data.....	4-7



The Electric Controller and
Manufacturing Company

A Hubbell ICD Brand



Industrial Controls Division

**Class 6820 & 6823
Lifting Magnetic Disconnects**

Class 6820 DC Manual-Magnetic Disconnect Switch

GENERAL INFORMATION

The Class 6820 Manual-Magnetic disconnects are used to isolate and protect lifting magnet circuits. The disconnect switches meet OSHA requirements for lifting magnet disconnect switches.

The standard Magnet Manual-Magnetic Disconnect Switch consists of:

- Two class 7004 Type M, Form Y781 (with silver faced power contact tips), SPNO Contactors. The contactors are mechanically tied. (M)
- One normally open and one normally closed electrical interlocks are included for indicating lights.
- One normally CLOSED power pole for magnet discharge
- One set of Discharge Resistors
- Two Pole Fused, control circuit knife switch (CSW)
- A Control Relay (CR)
- A Transient Suppressor (AI)

Contactors can be operated remotely or by enclosure handle
Cam operator prevents contractor from closing when handle is in the OFF position.



DC Manual-Magnetic Disconnect Selection Table

Volts	NEMA Contactor Size	Continuous Ampere Rating	Enclosure	
			NEMA Type 1 Gasketed General Purpose	NEMA Type 12 Dust tight NEMA Type 3 Outdoor
			Type	Type
230 VDC	4	150	MFS13	MFA13
	5	300	MGS13	MGA13

DC Manual-Magnetic Disconnect Modifications

Form	Description
A	Start-Stop Pushbuttons
A3	On-Off Pushbuttons
P1	Pilot Light Red – “ON”
P2	Pilot Light Green – “OFF”
X11	Additional Control Circuit Interlocks, 1NO / 1NC

Ordering Information Required:

For DC Manual-Magnetic Disconnect

- a. Class
- b. Type
- c. Form



The Electric Controller and
Manufacturing Company

A Hubbell ICD Brand

Class 6823 DC Manual Disconnect Switch

The standard disconnect switch consists of:

- Two pole, quick break switch, manually operated
- Normally Closed power pole for magnet discharge circuit
- Set of discharge resistors
- Set of fuse clips, suitable for fuses 250VDC rated, 200A max



DC Manual Disconnect Selection Table

Volts	Continuous Ampere Rating	General Purpose NEMA Type 1 Enclosure		General Purpose NEMA Type 1 Gasketed Enclosure	
		Type	FG11	Type	FS11
230 VDC	200	Type	FG11	Type	FS11

Modifications

Form	Description
X22	2-N.O. and 2-N.C. control circuit interlocks

Ordering Information Required:

For Manual Disconnect

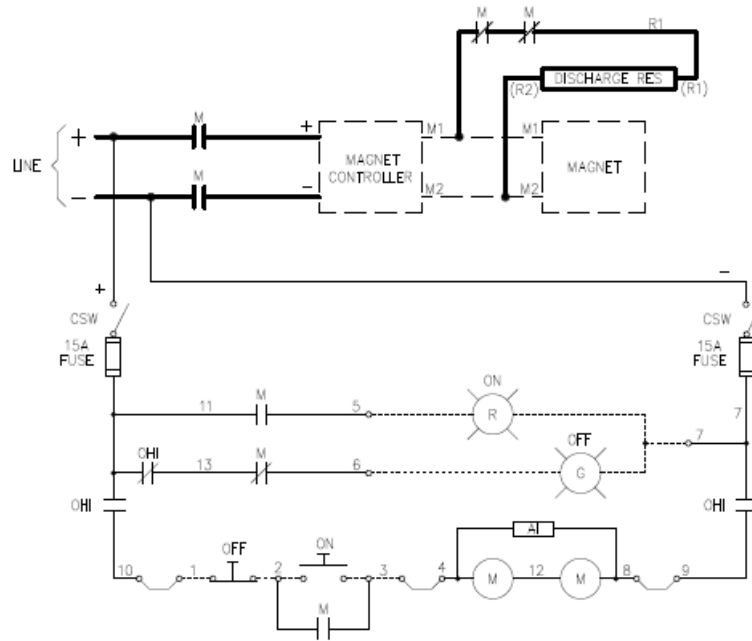
- a. Class
- b. Type
- c. Form



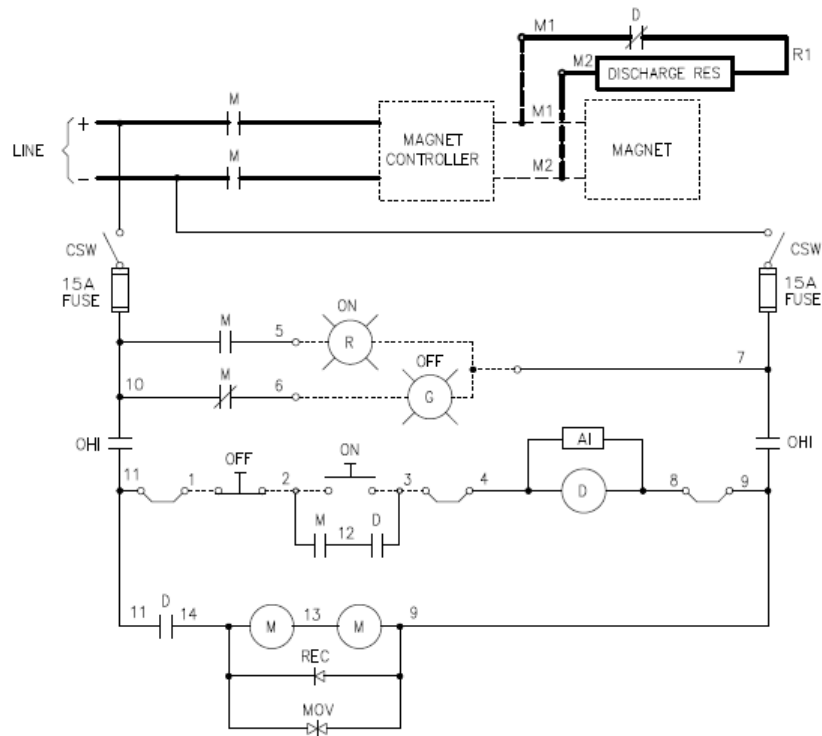
Class 6820 & 6823 Lifting Magnetic Disconnects

APPLICATION DATA

Class 6820 Type MFS13 / MFA13 ELEMENTARY DIAGRAM

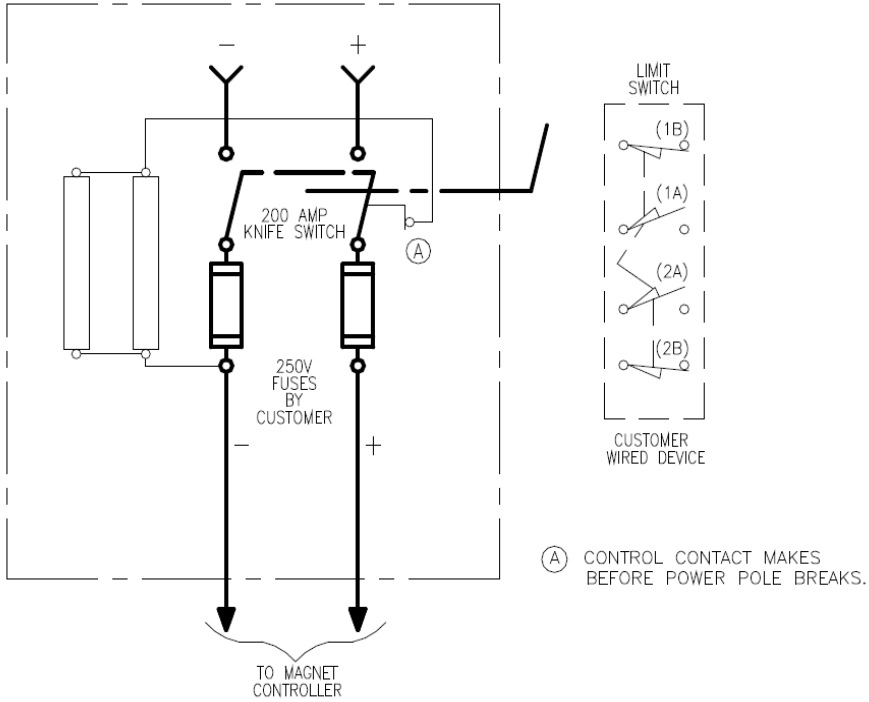


Class 6820 Type MGS13 / MGA13 ELEMENTARY DIAGRAM



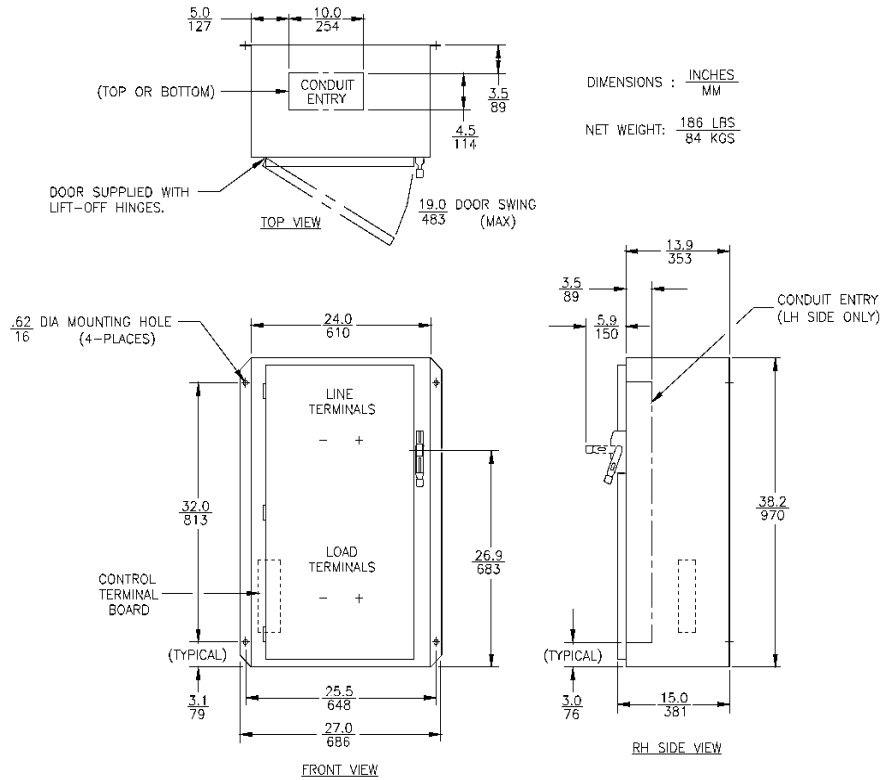
Crane Control Class 6820 & 6823 Lifting Magnetic Disconnects

Class 6823 Type FS11 / FS11 Form X122 DC Manual Disconnect ELEMENTARY DIAGRAM

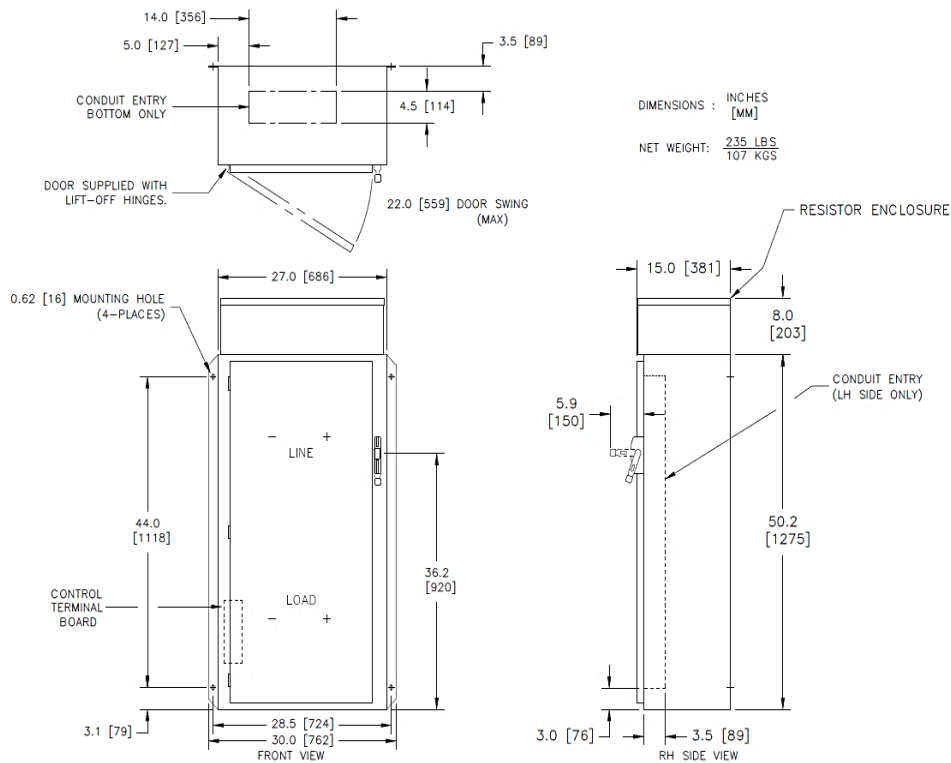


Class 6820 & 6823
Lifting Magnetic Disconnects

Class 6820 Type MFS13 / MFA13
Approximate Dimensions



Class 6820 Type MGS13 / MGA13
Approximate Dimensions



**Class 6823 Type FS11 / FG11
Approximate Dimensions**

