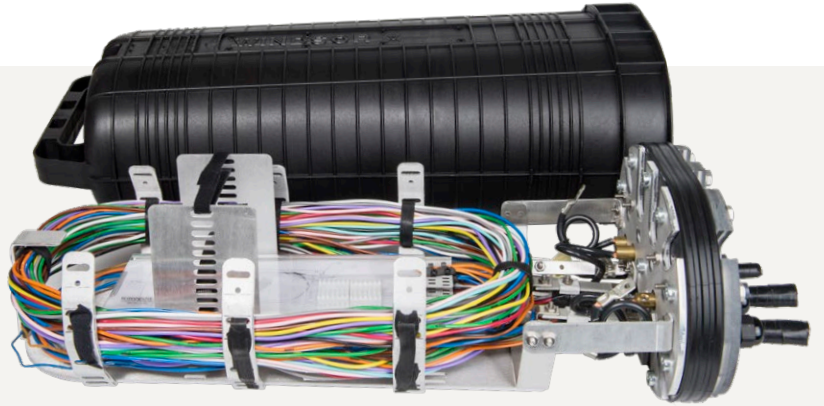


# OSP Fiber Solutions



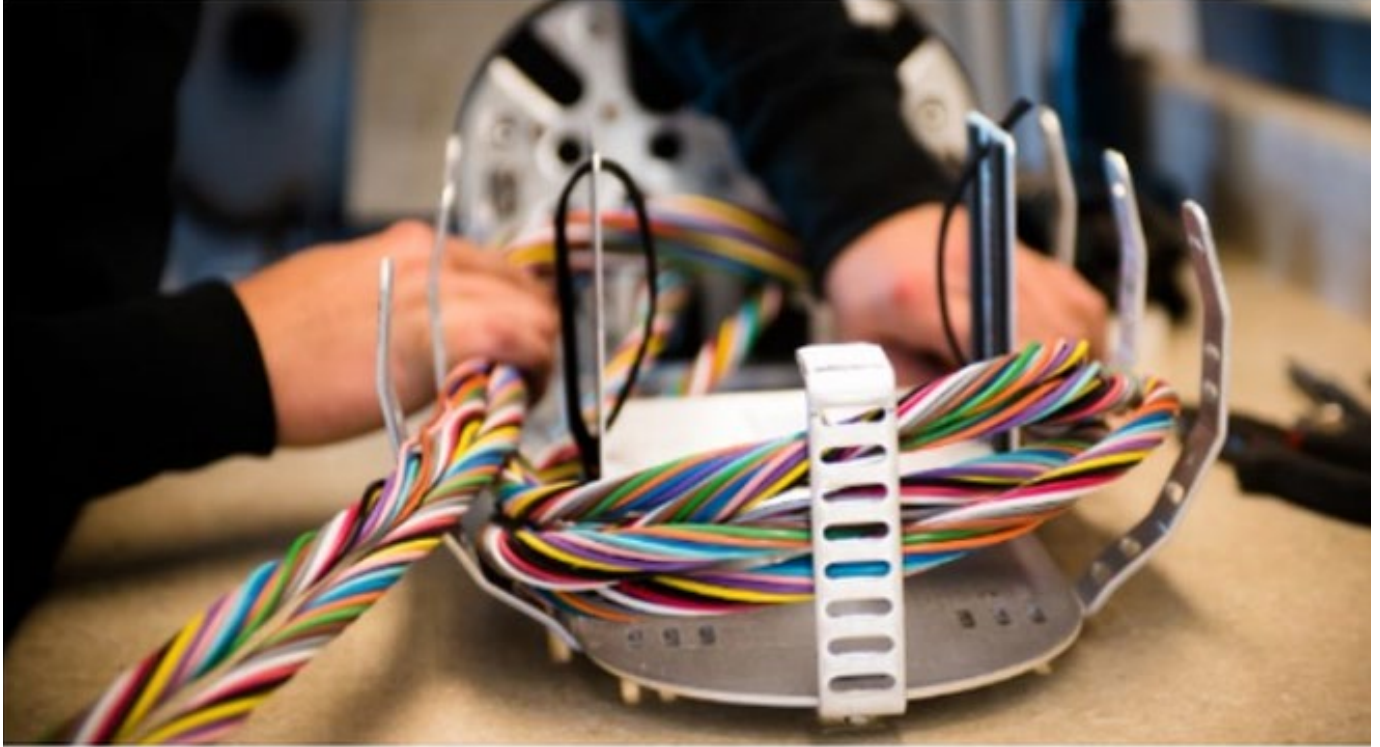
**JULY 2024**

# Table of Contents

---

<b>Overview</b>	3
<b>Fiber Demarcation Box</b>	4
<b>Fiber Splice Closures</b>	
Dielectric Closures	5
Grounded Closures	6
Isolated Ground Closures	7
OPGW Closures	8
Splice Trays	10
Grommets	11
<b>Closure Mounts</b>	12
<b>Coil Brackets</b>	13
<b>Downlead Clamps</b>	14
<b>Notes</b>	15

With the global demand for faster and more reliable connections ever-increasing, outside plant (OSP) fiber is more crucial than ever. OSP encompasses the fiber network infrastructure outside of buildings which is essential for the seamless, high-speed data transmission that connects our modern world. Developed alongside former technicians to prioritize flexibility and ease of workmanship, Hubbell OSP Fiber Solutions are rooted in decades of manufacturing expertise and proven field performance.



### **Focusing In: Last Mile Connectivity**

As the network extends to the user's doorstep, the 'last mile' becomes a critical frontier in achieving high-speed connectivity. We focus on the unique demands of last mile connectivity by developing products that facilitate resilient transitions, both above and below ground, throughout your network. Hubbell OSP Fiber Solutions adeptly handle the diverse challenges of dense urban settings and expansive rural areas, ensuring a robust and uninterrupted link, fulfilling the promise of connectivity with efficiency and reliability for every end user.

HPS has a policy of continuous product improvement. For current product design specifications and terms and conditions, please visit [hubbellpowersystems.com](http://hubbellpowersystems.com).

# Fiber Demarcation Box

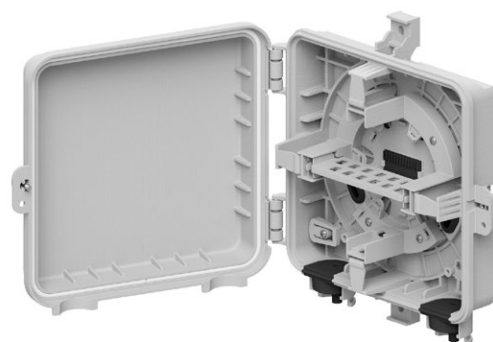
## Key Features

- Suitable for single-family and smaller MDU applications
- Housing constructed of UV-resistant, UL 94-5VB rated thermoplastic with full perimeter door seal
- Incorporates a cable storage hub with retention tabs to store excess length of fiber cable
- Supports up to 12 single-fusion splice capacity and 12 SC adapters
- Includes lower and thru-wall grommeted entry/exit ports
- Accepts up to 1" PVC conduit in lower grommet ports
- Assembled with captive door hardware
- Optional external ground available



## Base Models

- FDB12 - Fiber Demarcation Box (no adapters or external ground)
- FDB12G - Fiber Demarcation Box w/ external ground (no adapters)
- FDB12101 - Fiber Demarcation Box w/ one SC/APC adapter (no external ground)
- FDB12101G - Fiber Demarcation Box w/ one SC/APC adapter and external ground



## Specifications

<b>Material</b>	UV resistant thermoplastic
<b>Operating Temperature</b>	-40°F (-40°C) to 140°F (60°C)
<b>Flammability</b>	Enclosure: UL 94-5VB
<b>Weather Resistance</b>	10psi (34 kPa) water pressure, all directions - 24h, IPX5 rated
<b>Chemical Resistance</b>	Resistant to water displacement lubricant, wasp & ant spray, oil based paint, sulfuric acid, muriatic acid.
<b>Fungal Resistance</b>	ASTM G-21 Rating: 1 (polycarbonate)
<b>Impact Testing</b>	5 lb-ft (6.8Nm) at -22°F (-30°C) & 70°F (25°C)
<b>Drop Testing</b>	5ft at -22°F (-30°C) & 70°F (25°C)

## Ordering Information

FDB12	A - Adapter Type	BB - Adapter Qty	C - Additional Options	Dimensions IN (MM)	Weight LBS (KG)	Carton Qty
Fiber Demarcation Box, 12 Port	Omit = None	Omit = None	Omit = None	11.350 x 12.150 x 3.170 (288.29 x 308.61 x 80.52)	2.830 (1.28)	5
	1 - SC/APC	01 = 1	G = External Ground			
		02 = 2				
		04 = 4				
		06 = 6				
		12 = 12				

Example: Order FDB12106G for Fiber Demarcation Box w/ six SC/APC adapters and external ground.

NOTE: For options other than those listed, consult factory

## Key Features

- Shipped Fully Assembled
- Peel-out, EPDM rubber compression seal for PSCA570S and PSCA790SEB closures
- Urethane compression seal with grommets for PSCA350S and PSCA570SG closures
- All ports slotted to eliminate trapped cables
- Unsurpassed buffer tube storage capacity

## Available Models

- PSCA350S is factory equipped for butt splice applications in a compact size
- PSCA570S is factory equipped to support 2 backbone and 2 lateral cables in a mid-size dome
- PSCA570SG is factory equipped for butt splice applications in a mid-size dome
- PSCA790SEB is factory equipped to support 2 backbone and 2 lateral cables in a large dome
- Cable Build Out kits available for additional port capacity



PSCA570S

## Ordering Information

Catalog Number	Tray Width Compatibility	Splice Capacity (Single/Ribbon)	Qty of Ports (Available/Factory Equipped)	Port Application Range In (MM)		Seal Type	Dimensions L x W x H IN (MM)	Weight LBS (KG)
				Backbone	Lateral			
PSCA350S	STANDARD	96 / 288	4 / 2	0.250-0.625 (6.35-15.88)		Grommet	21.608 x 8.575 x 5.963 (548.8 x 217.8 x 151.5)	6.730 (3.05)
PSCA570S	STANDARD / WIDE*	432 / 1152	6 / 4	0.375-0.875 (9.53-22.23)	0.375-0.750 (9.53-19.05)	Peel-out	24.550 x 10.726 x 7.160 (622.3 x 272.4 x 182.9)	12.000 (5.44)
PSCA570SG	STANDARD / WIDE*	432 / 1152	6 / 2	0.375-0.750 (9.53-19.05)	0.375-0.625 (9.53-15.88)	Grommet		11.770 (5.34)
PSCA790SEB	STANDARD / WIDE*	576 / 1728	8 / 4	0.375-1.250 (9.53-31.75)	0.375-0.875 (9.53-22.23)	Peel-out	26.542 x 12.716 x 9.300 (674.2 x 323.0 x 236.2)	17.280 (7.84)

\* 570 and 790 series closures incorporate an adjustable tray holder that accepts both standard and wide splice trays.

## PSCA Closure Accessories

PSC350ADCBO	350 Closure Cable Build Out kit for 2 additional dielectric cables
PSC570ADCBO	570 Closure Cable Build Out kit for 2 additional dielectric cables
PSC570GADCBO	570G Closure Cable Build Out kit for 2 additional dielectric cables (Backbone Ports)
PSC570GADCBOBP	570G Closure Cable Build Out kit for 2 additional dielectric cables (Lateral Ports)
PSC790ADCBO	790 Closure Cable Build Out kit for 4 additional dielectric cables
PSC4040463P	350 Closure threaded stud bonding point
PSC4040462P	570 and 790 closure threaded stud bonding point

# Grounded Closures

## Key Features

- Shipped Fully Assembled
- Peel-out, EPDM rubber compression seal for PSCG790SEB closures
- Urethane compression seal with grommets for PSCG350S and PSCG570SG closures
- All ports slotted to eliminate trapped cables
- Unsurpassed buffer tube storage capacity
- Dedicated grounding point for each cable port

## Available Models

- PSCG350S is factory equipped for butt splice applications in a compact size
- PSCG570SG is factory equipped for butt splice applications in a mid-size dome
- PSCG790SEB is factory equipped to support 2 backbone and 2 lateral cables in a large dome
- Cable Build Out kits available for additional port capacity
- Cable Build Out kits available for additional port capacity



PSCG570SG

## Ordering Information

Catalog Number	Tray Width Compatibility	Splice Capacity (Single/Ribbon)	Qty of Ports (Available/Factory Equipped)	Port Application Range In (MM)		Seal Type	Dimensions L x W x H IN (MM)	Weight LBS (KG)
				Backbone	Lateral			
PSCG350S	STANDARD	96 / 288	4 / 2	0.250-0.625 (6.35-15.88)		Grommet	22.608 x 8.575 x 5.963 (572.2 x 217.8 x 151.5)	7.190 (3.26)
PSCG570SG	STANDARD / WIDE*	432 / 1152	6 / 2	0.375-0.750 (9.53-19.05)	0.375-0.625 (9.53-15.88)	Grommet	25.602 x 10.726 x 7.160 (650.3 x 272.4 x 182.9)	12.23 (5.55)
PSCG790SEB	STANDARD / WIDE*	648 / 1728	8 / 4	0.375-1.250 (9.53-31.75)	0.375-0.875 (9.53-22.23)	Peel-out	27.550 x 12.716 x 9.300 (674.2 x 323.0 x 236.2)	18.200 (8.26)

\* 570 and 790 series closures incorporate an adjustable tray holder that accepts both standard and wide splice trays.

## PSCG Closure Accessories

<b>PSC350ADCBO</b>	350 Closure Cable Build Out kit for 2 additional cables (bonding point not included; if required, see PSC4040463P below)
<b>PSC570GADCBO</b>	570G Closure Cable Build Out kit for 2 additional dielectric cables (Backbone Ports; bonding point not included; if required, see PSC4040462P below)
<b>PSC570GADCBOBP</b>	570G Closure Cable Build Out kit for 2 additional dielectric cables (Lateral Ports; bonding point not included; if required, see PSC4040462P below)
<b>PSC790ADCBO</b>	790 Closure Cable Build Out kit for 4 additional dielectric cables (bonding point not included; if required, see PSC4040462P below)
<b>PSC4040463P</b>	350 Closure threaded stud bonding point
<b>PSC4040462P</b>	570 and 790 closure threaded stud bonding point

## Key Features

- Shipped Fully Assembled
- Peel-out, EPDM rubber compression seal for PSCI570S and PSCI790SEB closures
- Urethane compression seal with grommets for PSCI350S and PSCI570SG closures
- All ports slotted to eliminate trapped cables
- Unsurpassed buffer tube storage capacity
- Dedicated isolated ground point for each cable port

## Available Models

- PSCI350S is factory equipped for butt splice applications in a compact size
- PSCI570S is factory equipped to support 2 backbone and 2 lateral cables in a mid-size dome
- PSCI570SG is factory equipped for butt splice applications in a mid-size dome
- PSCI790SEB is factory equipped to support 2 backbone and 2 lateral cables in a large dome
- Cable build out kits available for additional port capacity
- Cable Build Out kits available for additional port capacity



PSCI570S

## Ordering Information

Catalog Number	Tray Width Compatibility	Splice Capacity (Single/Ribbon)	Qty of Ports (Available/Factory Equipped)	Port Application Range In (MM)		Seal Type	Dimensions L x W x H IN (MM)	Weight LBS (KG)
				Backbone	Lateral			
PSCI350S	STANDARD	96 / 288	4 / 2	0.250-0.625 (6.35-15.88)		Grommet	22.377 x 8.575 x 5.963 (568.4 x 217.8 x 151.5)	7.650 (3.47)
PSCI570S	STANDARD / WIDE*	432 / 1152	6 / 4	0.375-0.875 (9.53-22.23)	0.375-0.750 (9.53-19.05)	Peel-out	25.570 x 10.726 x 7.160 (649.5 x 272.4 x 182.9)	13.000 (5.90)
PSCI570SG	STANDARD / WIDE*	432 / 1152	6 / 2	0.375-0.750 (9.53-19.05)	0.375-0.625 (9.53-15.88)	Grommet		12.270 (5.57)
PSCI790SEB	STANDARD / WIDE*	648 / 1728	8 / 4	0.375-1.250 (9.53-31.75)	0.375-0.875 (9.53-22.23)	Peel-out	27.529 x 12.716 x 9.300 (699.2 x 323.0 x 236.2)	19.120 (8.67)

\* 570 and 790 series closures incorporate an adjustable tray holder that accepts both standard and wide splice trays.

## PSCI Closure Accessories

PSC350IGCBO	350 Closure Cable Build Out kit for 2 additional armored cables w/ grounds
PSC570IGCBO	570 Closure Cable Build Out kit for 2 additional armored cables w/ grounds
PSC570GIGCBO	570G Closure Cable Build Out kit for 2 additional armored cables w/ grounds (Backbone Ports)
PSC570GIGCBOLP	570G Closure Cable Build Out kit for 2 additional armored cables w/ grounds (Lateral Ports)
PSC790IGCBO	790 Closure Cable Build Out kit for 4 additional armored cables w/ grounds



# OPGW Closures

## Key Features

- Shipped Fully Assembled
- Peel-out, EPDM rubber compression seal
- All ports slotted to eliminate trapped cables
- OPGW clamping system has substantial torque resistance and 1000 lbs pull out strength
- Accommodates central core and stainless-steel buffer tubes
- Unsurpassed buffer tube storage capacity

## Available Models

- PSCO570\*S is factory equipped to support 2 backbone OPGW and 2 lateral black jacket cables in a mid-size dome
- PSCO790\*SEB is factory equipped to support 2 backbone OPGW and 2 lateral black jacket cables in a large dome
- Cable Build Out Kits available for additional port capacity



PSCO570\*S

\*See "OPGW Closure Catalog Number Builder" below to complete catalog number for ordering

## Ordering Information

Catalog Number	Tray Width Compatibility	Splice Capacity (Single/Ribbon)	Qty of Ports (Available/Factory Equipped)	Port Application Range In (MM)			Seal Type	Dimensions L x W x H IN (MM)	Weight LBS (KG)
				OPGW	Backbone	Lateral			
PSCO570*S	STANDARD / WIDE*	432 / 1152	OPGW - 4 / 2 BLACK JACKET - 4 / 2	0.250-0.688 (6.35-17.48)	0.375-0.875 (9.53-22.23)	0.375-0.750 (9.53-19.05)	Peel-out	22.377 x 8.575 x 5.963 (568.4 x 217.8 x 151.5)	7.650 (3.47)
PSCO790*SEB	STANDARD / WIDE*	432 / 1152	OPGW - 4 / 2 BLACK JACKET - 6 / 2	0.375-1.125 (9.53-28.58)	0.375-1.250 (9.53-31.75)	0.375-0.875 (9.53-22.23)	Peel-out	25.570 x 10.726 x 7.160 (649.5 x 272.4 x 182.9)	13.000 (5.90)

\* 570 and 790 series closures incorporate an adjustable tray holder that accepts both standard and wide width splice trays.

## OPGW Closure Catalog Number Build

Closure Size \_\_\_\_\_ PSCO \_\_\_\_ \_

• See chart

Number of OPGW Ports \_\_\_\_\_

• 2 Ports Standard; 4 Ports Maximum

Outside Cable Diameter \_\_\_\_\_

• Decimal inches

Diameter of Al Tube \_\_\_\_\_

• Decimal inches ("000" if: SS Tubes; 570 application with diameter < 0.250"; or, 790 application with diameter < 0.375")

Tray Width \_\_\_\_\_

• 570 and 790 series closures accept both standard and wide width splice trays

Express Bracket \_\_\_\_\_

• 570 - Omit

• 790 - Standard; add EB



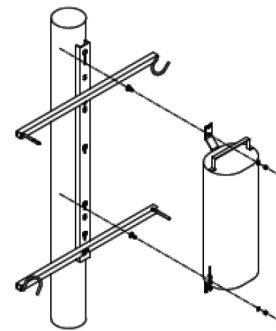
<b>PSC0570CBOXXXXYY</b>	570 OPGW Cable Build Out kit including set of OPGW clamps (replace XXX with the OD of the OPGW cable and YYY with the OD of the central Al tube; for YYY, enter "000" if: SS Tubes or diameter < 0.250")
<b>PSC0790CBOXXXXYY</b>	790 OPGW Cable Build Out kit including set of OPGW clamps (replace XXX with the OD of the OPGW cable and YYY with the OD of the central Al tube; for YYY, enter "000" if: SS Tubes or diameter < 0.375")
<b>PSC570ADCBO</b>	570 Closure Cable Build Out kit for 2 additional dielectric cables
<b>PSC790ADCBO</b>	790 Closure Cable Build Out kit for 4 additional dielectric cables
<b>PSC730PKS4</b>	OPGW Potting kit for up to 4 trays (Includes: two large potting kit molds for cable > 0.750" OD; two small potting kit molds for cable < 0.750" OD; eight 48" nylon tubes; six 8" poly tubes)
<b>PSC730PKS8</b>	OPGW Potting kit for up to 8 trays (Includes: two large potting kit molds for cable > 0.750" OD; two small potting kit molds for cable < 0.750" OD; sixteen 48" nylon tubes; six 8" poly tubes)
<b>PSC570BRC</b>	570 Closure 14ga stainless steel bullet resistant canister
<b>PSC790BRC</b>	790 Closure 14ga stainless steel bullet resistant canister

For BRC: Mounting hardware to attach to coil bracket included; can be tower mounted using PSC730TPMB, sold separately; can be bolted or banded to wooden pole or steel monopole, hardware not included

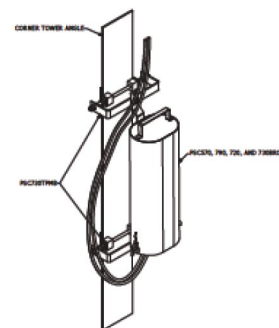


**PSC570BRC/ PSC790BRC**

## BRC Mounting Options



**Coil Bracket**

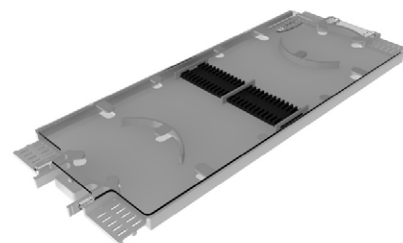


**Tower (using PSC730TPMB)**

# Splice Trays

## Key Features

- Plastic Splice Trays include an ABS plastic tray base with integrated fiber routing and splice chip retention tabs and recessed buffer tube tie-wrap slots
- Metal Splice Trays include a durable formed aluminum tray base



## Ordering Information

Catalog No.	Description	Tray Kit Contents						
		Tray Base	Clear LID	Single Fiber Splice Chips		Mass Fusion Splice Chips		Zip Ties & Felt
				6 POS.	12 POS.	6 POS.	12 POS.	
Plastic Trays								
PSCSTPS24	24 Single-Fiber Splice Capacity, Standard Width	•	•		2			•
PSCSTPS24T	24 Single-Fiber Splice Capacity, Standard Width Tall	•	•		1 Stkd.*			•
PSCSTPS48	48 Single-Fiber Splice Capacity, Wide Width	•	•		4			•
PSCSTPS72	72 Single-Fiber Splice Capacity, Wide Width	•	•		3 Stkd.*			•
PSCSTPR144	144 Mass Fusion Splice Capacity, Standard Width	•	•				1	•
PSCSTPR288	288 Mass Fusion Splice Capacity, Wide Width	•	•				2	•
PSCSTPTT	Transition Tray, Standard Width	•	•					•
PSCSTPTTW	Transition Tray, Wide Width	•	•					•
Metal Trays								
PSC20512	12 Single-Fiber Splice Capacity, Standard Width	•	•		1			
PSC20524	24 Single-Fiber Splice Capacity, Standard Width	•	•	4				
PSC20536	36 Single-Fiber Splice Capacity, Wide Width	•	Metal		3			
PSC20548	48 Single-Fiber Splice Capacity, Wide Width	•	Metal		4			
PSC20554	54 Single-Fiber Splice Capacity, Wide Width	•	Metal	4	1			
PSC205144	144 Mass Fusion Splice Capacity, Standard Width	•	Metal			2		
PSC205288	288 Mass Fusion Splice Capacity, Wide Width	•	Metal			4		
PSC20514TT	Transition Tray, Standard Width	•	Metal					
PSC205WTT	Transition Tray, Wide Width	•	Metal					

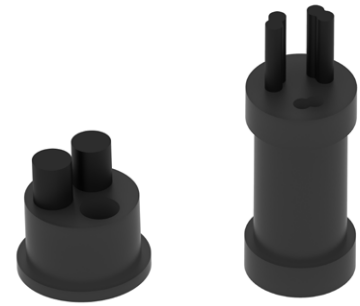
## Tray Accessories

**PSC10002P50** Heat Shrink Sleeve Single Fusion 2.375" (60 mm) Length (Sold as bag of 50 pieces)

**PSC10002FP50** Heat Shrink Sleeve Mass Fusion 1.575" (40 mm) Length (Sold as bag of 50 pieces)

## Key Features

- Drop cable grommet kits available for Flat, Round and ROC™ cable applications including inserts and RTV for simple drop cable installation
- Peel-out grommets (350 series) and replacement grommet kits (350 and 570G series) also available
- Compatible closures indicated in the chart below



## Ordering Information









Catalog No.	Description	Closure Compatibility				Grommet Kit Contents		
		350	570	570G	790	Grommet	Insert	RTV
Flat Drop								
PSC4040351	4 Port Flat Drop Grommet	•				•	3	•
PSC4040352	3 Port Flat Drop Grommet		•	•	•	•	2	•
PSC4040353	4 Port Flat Drop Grommet		•	•	•	•	3	•
Round Drop								
PSC4040387	9 Port x 0.125" Round Drop Grommet	•				•	8	•
PSC4040388	7 Port x 0.188" Round Drop Grommet	•				•	6	•
PSC4040389	4 Port x 0.250" Round Drop Grommet	•				•	3	•
PSC4040390	3 Port x 0.313" Round Drop Grommet	•				•	2	•
PSC4040391	2 Port x 0.375" Round Drop Grommet	•				•	1	•
PSC4040510	1 port x 0.313" Round Drop Grommet		•	•	•	•		•
PSC4040511	3 Port x 0.313" Round Drop Grommet		•	•	•	•	2	•
PSC4040512	5 Port x 0.313" Round Drop Grommet				•	•	4	•
ROC™ Drop								
PSC4040464	4 Port ROC™ Drop Grommet	•				•	3	•
PSC4040465	3 Port ROC™ Drop Grommet		•	•	•	•	2	•
PSC4040466	4 Port ROC™ Drop Grommet		•	•	•	•	3	•
Replacement Grommet Kit								
PSE4040300P	350 Closure Grommet Kit (8 pcs; 0.250-0.625")	•				•		
PSE4040323P	570G Closure Backbone Port Grommet Kit (7 pcs; 0.375-0.750")		•	•	•	•		
PSE4040328P	570G Closure Lateral Port Grommet Kit (3 pcs; 0.375-0.625")		•	•	•	•		

# Closure Mounts

## Key Features

- Stationary brackets for coil bracket, pole and tower applications
- Aerial brackets for lashed cable and ADSS applications

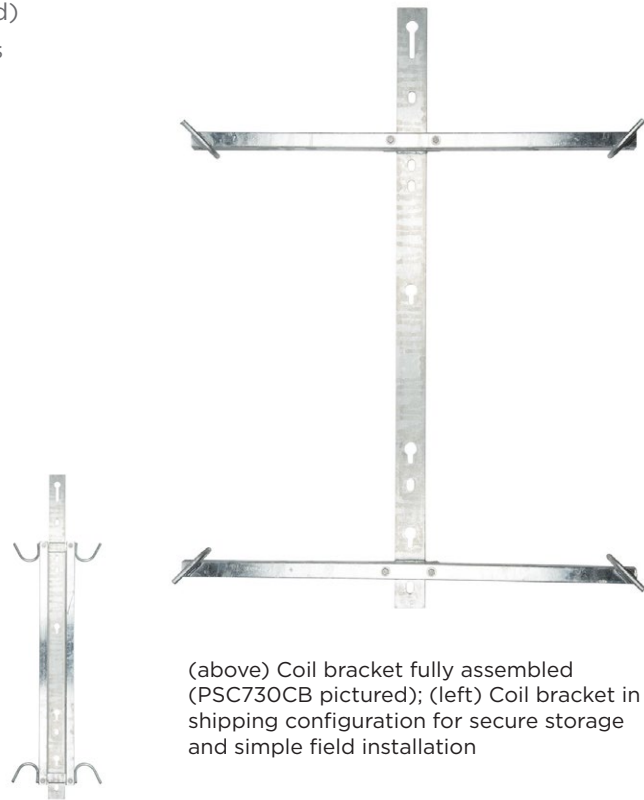
## Ordering Information

Catalog No.	Description	Closure Compatibility				Product Image
		350	570	570G	790	Grommet
Stationary brackets						
PSC700VCB	Vertical Closure Bracket, Stainless Steel <ul style="list-style-type: none"><li>For use in conjunction with coil bracket (mounting hardware included)</li><li>Can band or bolt to wood poles or steel monopoles (hardware not included)</li></ul>	•	•	•	•	
PSC4040392	Vertical Closure Standoff Bracket, Aluminum <ul style="list-style-type: none"><li>For use in conjunction with coil bracket (mounting hardware included)</li><li>Can band or bolt to wood poles or steel monopoles (hardware not included)</li></ul>	•				
PSC4040395	<ul style="list-style-type: none"><li>Universal design supports various Hubbell and competitor closures</li></ul>		•	•	•	
PSC730TPMB	Tower Post Mounting Bracket <ul style="list-style-type: none"><li>For attaching Bullet Resistant Canister or PSC700VCB Vertical Closure Bracket to self-supporting towers (max 8"/200mm angle steel)</li><li>Sold as a pair</li></ul>		•	•	•	
Aerial brackets						
PSC570AB	Aerial Hanging Bracket, Adjustable <ul style="list-style-type: none"><li>For mounting splice closure to horizontal messenger strand</li><li>1.250" of height adjustability</li></ul>	•	•	•	•	
UBKTMK	Aerial Hanging Bracket, Non-adjustable <ul style="list-style-type: none"><li>For mounting splice closure to horizontal messenger strand</li><li>Non-adjustable design</li></ul>	•	•	•	•	
UBK	ADSS Deadend Aerial Hanging Bracket <ul style="list-style-type: none"><li>For mounting splice closure to deadend, armor rod, or fiberglass extension arm using universal bands</li></ul>	•	•	•	•	
UBKADSS	ADSS Direct Attach Aerial Hanging Bracket <ul style="list-style-type: none"><li>For mounting splice closure directly to the ADSS cable using direct attach banding bracket and peel-away grommet</li></ul> <i>Note: Consult cable manufacturer before using this mounting method</i>	•	•	•	•	
UB1	ADSS Deadend Aerial Hanging Bracket, Messenger Hardware Adaptor <ul style="list-style-type: none"><li>Adapts deadend, armor rod, or fiberglass extension arm for use with standard splice closure manufacturer's messenger mounting hardware</li></ul>	•	•	•	•	

## Key Features

- Supports splice closure and holds extra lengths of OPGW or ADSS cable
- For use with Hubbell, AFL\*, PLP and other fiber splice closures
- Three-piece bolted design requires less storage space and allows small parcel shipment. (PSC730CB3 ships fully assembled)
- Can band or bolt to wood poles or steel monopoles (Hardware not included)

\*PSC4040132 w/ standoffs required for some AFL closures



(above) Coil bracket fully assembled (PSC730CB pictured); (left) Coil bracket in shipping configuration for secure storage and simple field installation

## Ordering Information

Catalog No.	Description	Cable Application		Assembled Dimensions L x W x H IN (MM)	Weight LBS (KG)
		ADSS	OPGW		
PSC730CB3	Galvanized Steel Coil Bracket, 150' approx. capacity (2 x 75' cables)	•	•	33.000 x 26.000 x 8.000 (832.2 x 660.4 x 203.2)	25.500 (11.57)
PSC730CB	Galvanized Steel Coil Bracket, 300' approx. capacity (2 x 150' cables)	•	•	60.000 x 44.000 x 8.062 (1524.0 x 1117.6 x 204.8)	35.000 (15.88)
PSC730CB300	Galvanized Steel Coil Bracket, 600' approx. capacity (2 x 300' cables)	•	•	60.000 x 44.000 x 8.750 (1524.0 x 1117.6 x 222.3)	47.100 (21.36)
PSC730CB1000	Galvanized Steel Coil Bracket, 2000' approx. capacity (2 x 1000' cables)	•	•	60.000 x 58.750 x 9.750 (1524.0 x 1492.3 x 247.7)	50.000 (22.68)
PSC4040198	Aluminum Coil Bracket, 300' approx. capacity (2 x 150' cables)	•	•	60.000 x 44.000 x 10.438 (1524.0 x 1117.6 x 265.1)	44.000 (19.96)
PSC4040132	Aluminum Coil Bracket w/ Standoffs, 300' approx. capacity (2 x 150' cables)	•	•		45.000 (20.41)

# Downlead Clamps

## Key Features

- Downlead clamp with urethane rubber halves secures cables to structure without damaging fiber
- Clamp bodies designed for curved or flat surface mounting and accept up to 5/8" diameter bolt
- Clamps available for cable diameters from 0.375" (9.5mm) to 1.200" (30.5mm)
- Available as clamp blocks only, clamp blocks with mounting hardware, or mounting hardware sold separately



Figure 1



Figure 2



Figure 3



Figure 4



Figure 5

## Ordering Information

Catalog Number (Clamp Body Only; Figure 1)	Cable Application Range In (MM)	Carton Qty		Attachment Type	
		Units	Weight LBS (KG)	Description	Suffix
PSCDLCU375500	.375-.500 (9.53-12.70)	10	4.375 (1.98)	Lag Bolt (Figure 2)	L
PSCDLCU500625	.500-.625 (12.70-15.88)			Stainless Steel Banding Mount (Figure 3)	S
PSCDLCU625750	.625-.750 (15.88-19.05)			Bolt Kit (Figure 4)	B
PSCDLCU750875	.750-.875 (19.05-22.23)			Tower Angle Mount (Figure 5)	T
PSCDLCU875100	.875-1.000 (22.23-25.40)				
PSCDLCU100120	1.000-1.200 (25.40-30.48)				

## Hardware Kits Sold Separately

- PSE4040212P** Lag Screw Kit (L) (Contents: 4" x 1/2" lag screw, round flat washer, and 2" x 2" square washer)
- PSE4040213P** Stainless Steel Banding Kit (S) (Contents: banding bracket, 5/8-11 x 3-1/2" bolt, 2" x 2" square washer, lockwasher, and hex nut)
- PSE4040214P** Tower Mounting Kit (T) (Contents: tower mount, 1/2-13 x 6" bolt, three lockwashers, two 2" x 2" square washers, and two hex nuts)
- PSE4040215P** Bolt Kit (B) (Contents: 1/2-13 x 3" bolt, lockwasher, round flat washer, and hex nut)





[www.hubbell.com/hubbellpowersystems](http://www.hubbell.com/hubbellpowersystems)



A Hubbell brand

©2025 Hubbell Power Systems. All rights reserved.  
Hubbell and the Hubbell logo are registered trademarks or trademarks of Hubbell  
Incorporated. All other trademarks are the property of their respective owners.

LEEDS-CONN-CAT-EN-02247 | 02/2025