

Type GLE Enclosures

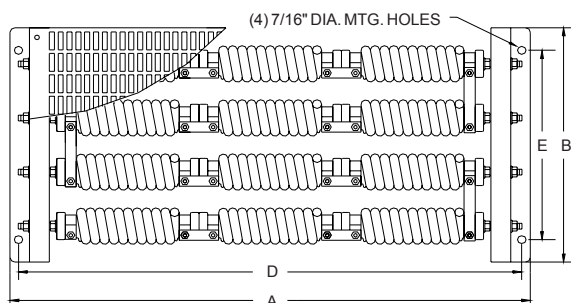
The Type GLE enclosure is our most common and economical means for housing wirewound and edgewound resistor coils. These units consist of heavy gage endframes supporting the resistor coils with a removable cover and open bottom. The 3-sided screened covers are CNC punched producing a burr free edge and professional aesthetics. Resistor coils are interconnected using hardware and stainless steel bus bars, insuring a corrosion resistant current path to withstand nearly any harsh industrial environment. The standard finish is galvanized, but an optional powder coated, yellow zinc, aluminum or stainless steel finish is available upon request.

The GLE enclosures are designed for easy installation and wiring. The bottom mounting flanges are bent outward, allowing the units to be quickly installed with a ratchet or screwdriver. Endframes come complete with removable 1/2 inch conduit knockouts for easy wiring. Remember to use only 150°C rated silicone or teflon wire when attaching directly to resistor terminals. Our wide selection of Type GLE enclosures are available with a louvered cover; add "-L" to the part number.

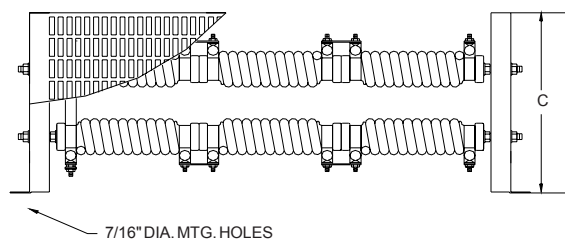
GLE ENCLOSURE DIMENSIONS AND COIL OPTIONS

PART NUMBER	MAX. NO. WR COILS	MAX. NO. SXR,VR or ER	DIMENSIONS IN INCHES				
			A	B	C	D	E
GLE11	1	(1) SIZE 2	12	5	4	11-1/8	—
GLE12	2	(2) SIZE 2	12	7	5	11-1/8	4-1/2
GLE13	3	(3) SIZE 2	12	10	5	11-1/8	7-1/2
GLE14	4	(4) SIZE 2	12	13	5	11-1/8	10-1/2
GLE15	5	(5) SIZE 2	12	16	5	11-1/8	13-1/2
GLE23	6	(3) SIZE 5	19	10	5	18-1/8	7-1/2
GLE24	8	(4) SIZE 5	19	13	5	18-1/8	10-1/2
GLE25	10	(5) SIZE 5	19	16	5	18-1/8	13-1/2
GLE26	12	(6) SIZE 5	19	10	10	18-1/8	7-1/2
GLE28	16	(8) SIZE 5	19	13	10	18-1/8	10-1/2
GLE33	9	(3) SIZE 7	26-1/2	10	5	25-3/8	7-1/2
GLE34	12	(4) SIZE 7	26-1/2	13	5	25-3/8	10-1/2
GLE35	15	(5) SIZE 7	26-1/2	16	5	25-3/8	13-1/2
GLE36	18	(6) SIZE 7	26-1/2	10	10	25-3/8	7-1/2
GLE38	24	(8) SIZE 7	26-1/2	13	10	25-3/8	10-1/2
GLE310	30	(10) SIZE 7	26-1/2	16	10	25-3/8	13-1/2
GLE312	36	(12) SIZE 7	26-1/2	13	15	25-3/8	10-1/2
GLE315	45	(15) SIZE 7	26-1/2	16	15	25-3/8	13-1/2

TOP VIEW



FRONT VIEW



Typical GLE Enclosure containing (24) WR Type Resistors - Part No. GLE38

Type GCE Enclosures

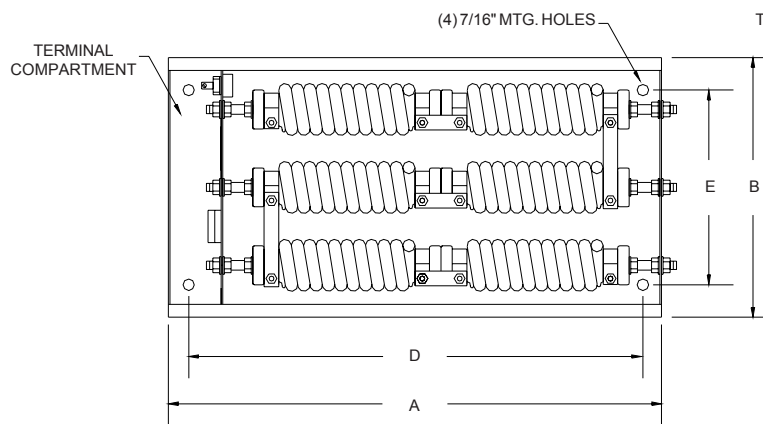
The Type GCE compartment enclosure offers several additional features and options for simplifying an installation. These heavy gage screened enclosures feature a solid bottom and a built-in compartment separated from the resistor assembly. The resistors are factory wired to a terminal block mounted in this compartment using high temperature teflon or silicone wire. During installation, standard 90°C rated wire is routed into the compartment through the removable 1/2 inch conduit knockouts and connected to the factory wired terminal block. The terminal compartment wall is pre-punched for an optional thermal switch for sensing an over-temperature condition.

Our standard unit includes a screened cover which is CNC punched to obtain maximum cooling and professional aesthetics. Mounting holes are located inside the enclosure and can be easily accessed by removing the cover. Resistor coils are interconnected using stainless steel bus bars, producing a corrosion resistant current path to withstand nearly any harsh industrial environment. The standard finish is galvanized, but an optional powder coated, yellow zinc, aluminum or stainless steel finish is available upon request. As shown in the table below, the size of the enclosure will vary depending on the number of resistor coils required for your application. Please do not hesitate to call the factory if you need assistance. Units are available with a louvered cover; add "-L" to the part number and note that the 'A' and 'B' dimensions will increase by an inch.

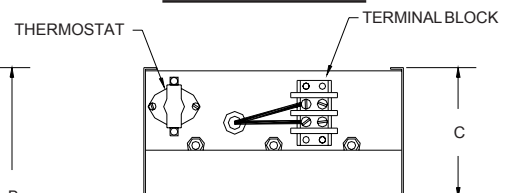
GCE ENCLOSURE DIMENSIONS AND COIL OPTIONS

PART NUMBER	MAX. NO. WR COILS	MAX. NO. SXR, VR or ER	DIMENSIONS IN INCHES				
			A	B	C	D	E
GCE1	1	(1) SIZE 2	12	5	5	10-1/2	—
GCE2	2	(2) SIZE 2	12	7	5	10-1/2	4-1/2
GCE3	3	(3) SIZE 2	12	10	5	10-1/2	7-1/2
GCE4	4	(4) SIZE 2	12	13	5	10-1/2	10-1/2
GCE5	5	(5) SIZE 2	12	16	5	10-1/2	13-1/2
GCE6	6	(3) SIZE 5	19	10	5	17-1/2	7-1/2
GCE8	8	(4) SIZE 5	19	13	5	17-1/2	10-1/2
GCE9	9	(3) SIZE 7	26-1/2	10	5	25	7-1/2
GCE10	10	(5) SIZE 5	19	16	5	17-1/2	13-1/2
GCE12	12	(4) SIZE 7	26-1/2	13	5	25	10-1/2
GCE15	15	(5) SIZE 7	26-1/2	16	5	25	13-1/2
GCE18	18	(6) SIZE 7	28	10	10	26-1/2	7-1/2
GCE24	24	(8) SIZE 7	28	13	10	26-1/2	10-1/2
GCE30	30	(10) SIZE 7	28	16	10	26-1/2	13-1/2

TOP VIEW



LEFT SIDE VIEW



Typical GCE Enclosure containing (6) WR Type Resistors - Part No. GCE6

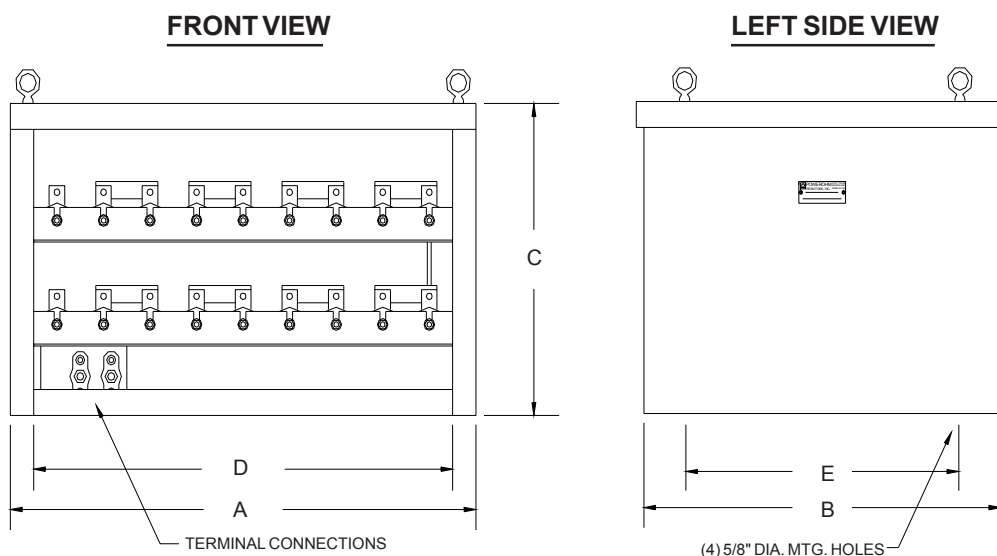
Type EE Enclosures

The Type EE enclosure is designed for applications requiring a large number of Type SXR, WR, VR and/or ER resistor coils. In addition to the large capacity, these units are available with several options to simplify installation. We offer optional terminal connections up to 400 amps continuous located on a terminal plate in the bottom of the enclosure. These factory wired connections allow standard 90°C rated wire to be used if routed along the enclosure bottom. If installing without the optional terminal connections, always use 150°C rated silicone or teflon wire when attaching directly to resistors.

These rigid enclosures include a screened top and removable front and back screened covers. The enclosure sides and bottom are solid and furnished with two lifting eyes. Mounting holes are located inside the enclosure and can be easily accessed by removing the front or back cover. Resistor coils are interconnected using stainless steel bus bars, producing a corrosion resistant current path to withstand nearly any harsh industrial environment. The standard finish is galvanized, but an optional powder coated, hot dipped galvanized, aluminum or stainless steel finish is available upon request. As shown in the table below, the size of the enclosure will vary depending on the number of resistor coils required for your application. Units are available with louvered covers; add "-L" to the part number. Please do not hesitate to call the factory if you need assistance.

EE ENCLOSURE DIMENSIONS AND COIL OPTIONS

PART NUMBER	MAX. NO. WR COILS	MAX. NO. SXR, VR OR ER	DIMENSIONS IN INCHES				
			A	B	C	D	E
EE1	18	(9) SIZE 5	30	23	12	26-1/2	18
EE2	36	(18) SIZE 5	30	23	18	26-1/2	18
EE3	54	(27) SIZE 5	30	23	24	26-1/2	18
EE4	72	(36) SIZE 5	30	23	30	26-1/2	18
EE5	90	(45) SIZE 5	30	23	36	26-1/2	18
EE6	108	(54) SIZE 5	30	23	48	26-1/2	18
EE7	126	(63) SIZE 5	30	23	60	26-1/2	18
EE8	144	(72) SIZE 5	30	23	72	26-1/2	18
EE9	162	(81) SIZE 5	30	23	84	26-1/2	18



Type EE2 Enclosure shown with optional terminal connections.

Type EG Enclosures

The Type EG enclosure is specifically designed to house our Type GL, GM and RH resistor banks. The enclosure is designed with shelves so individual banks can be easily installed or replaced. Assemblies come complete with all necessary bank-to-bank connections consisting of either high temperature insulated wire or copper bus bars. These rigid, free standing enclosures include a screened top and removable front and back screened covers. The enclosure sides and bottom are solid and the unit is furnished with two lifting eyes. The mounting holes are located inside the enclosure and can be easily accessed by removing the front or back cover.

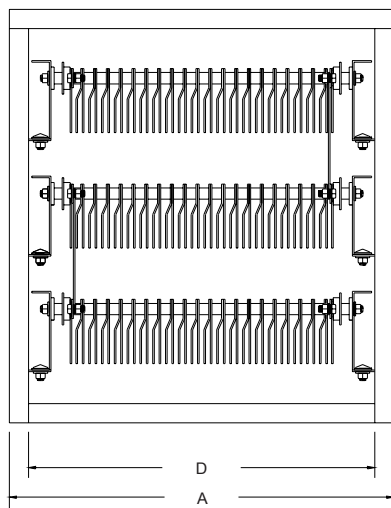
The Type EG enclosure also has the capability of housing Type SXR, WR, VR and ER resistor coils. Resistor coils are installed on endframes and interconnected with stainless steel bus bars producing a corrosion resistant current path to assure long life in nearly any industrial environment.

The standard finish is galvanized, but an optional powder coated, hot dipped galvanized, aluminum, or stainless steel finish is available upon request. As shown in the table below, the size of the enclosure will vary depending on the number of resistors required for your application. Units are available with a louvered cover; add "-L" to the part number. Always use 150°C rated silicone or teflon wire when attaching directly to resistor terminals. Please call the factory if you need assistance.

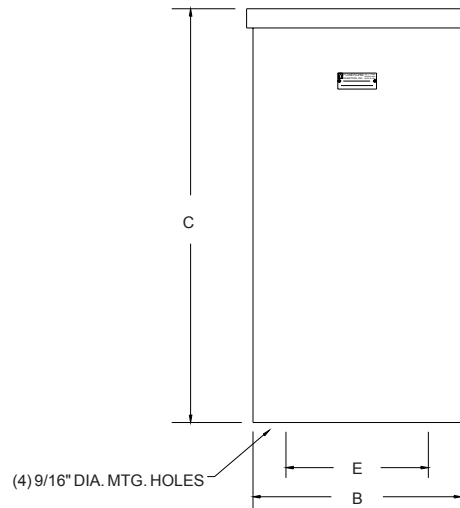
EG ENCLOSURE DIMENSIONS AND RESISTOR OPTIONS

PART NUMBER	NO. OF GRID BANKS	MAX. NO. SXR, VR, ER	MAX. NO. WR COILS	DIMENSIONS IN INCHES				
				A	B	C	D	E
EG1	1	(4) SIZE 7	12	30	17	14	26-1/2	12
EG2	2	(8) SIZE 7	24	30	17	23	26-1/2	12
EG3	3	(12) SIZE 7	36	30	17	32	26-1/2	12
EG4	4	(16) SIZE 7	48	30	17	41	26-1/2	12
EG5	5	(20) SIZE 7	60	30	17	50	26-1/2	12
EG6	6	(24) SIZE 7	72	30	17	59	26-1/2	12
EG7	7	(28) SIZE 7	84	30	17	68	26-1/2	12
EG8	8	(32) SIZE 7	96	30	17	77	26-1/2	12
EG9	9	(36) SIZE 7	108	30	17	86	26-1/2	12

FRONT VIEW



LEFT SIDE VIEW



Type EG3 Enclosure shown containing (3) Grid Banks.

24 HOUR EMERGENCY SERVICE (800) 838-4694