



BUS SUPPORTS

BOLTED/ALUMINUM

ACS	CABLE TO INSULATOR.....	SD-1
ADCS.....	TWO CABLE OR TUBES TO INSULATOR.....	SD-3
ASR.....	CABLE OR TUBE TO INSULATOR.....	SD-2
ATSF	TUBE TO INSULATOR.....	SD-5
AUDE	VERTICAL, TUBE TO INSULATOR.....	SD-7
AUR.....	TUBE TO INSULATOR.....	SD-4
AURC	TUBE TO INSULATOR (COUPLER).....	SD-6
AURF.....	EXPANSION, TUBE TO INSULATOR.....	SD-8

BOLTED/BRONZE

BHX.....	FLAT BAR TO INSULATOR.....	SD-15
BVX.....	VERTICAL RIGID, FLAT BAR TO INSULATOR.....	SD-17
BVXA.....	VERTICAL SLIP TYPE, FLAT BAR TO INSULATOR.....	SD-16
CDSB.....	TWO CABLES OR TUBES TO INSULATOR.....	SD-12
CSSB.....	CABLE OR TUBE TO INSULATOR.....	SD-11
ICA.....	CABLE OR TUBE TO INSULATOR.....	SD-10
UDE.....	VERTICAL, TUBE TO INSULATOR.....	SD-14
UP	TUBE TO INSULATOR.....	SD-13

WELDMENT/ALUMINUM

WTH	TUBE TO INSULATOR.....	SD-20
WUDE.....	TUBE TO INSULATOR.....	SD-23
WURE.....	TUBE TO INSULATOR.....	SD-19
WURF	EXPANSION, TUBE TO INSULATOR.....	SD-22



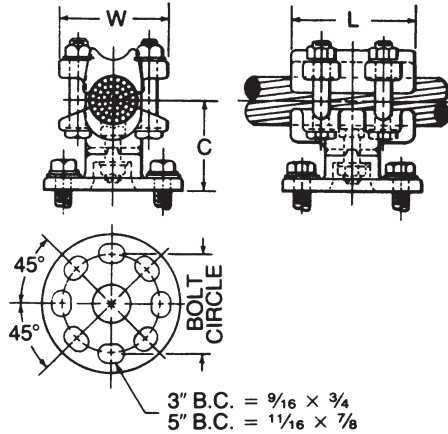
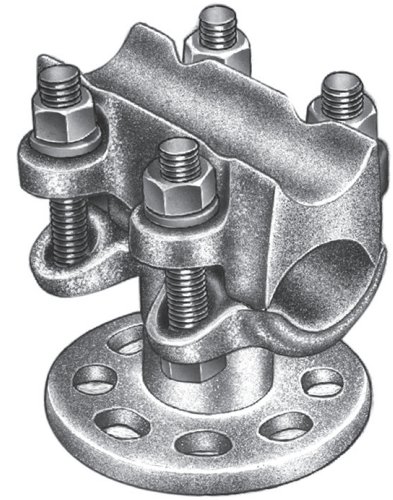
BUS SUPPORTS ALUMINUM CABLE TO INSULATOR

ALUMINUM
ACS

Aluminum alloy bus support for aluminum cable. Clamping bolts have hex-stops for one-wrench installation.

Cap screws are supplied for upright mounting.

- Material:** Castings—356-T6 aluminum alloy
- Clamping hardware—aluminum alloy
- Mounting hardware—galvanized steel



Product Data & Conductor Size

CATALOG NUMBER	CABLE RANGE		CABLE DIAMETER (MM)		BOLT CIRCLE DIA.	DIMENSIONS INCHES (MM)			APPROX. WT. EACH LBS. (KG)
	AAC	ACSR	SMALL GROOVE	LARGE GROOVE		L	C	W	
ACS63	#4-250 MCM	#4-4/0	.232-.500 (5.9)-(12.7)	.500-.575 (12.5)-(14.6)	3	3 (76.2)	2-5/8 (69.9)	2-7/16 (61.9)	1.9 (.86)
ACS65	#4-250 MCM	#4-4/0			5	3 (76.2)	2-5/8 (69.9)	2-7/16 (61.9)	2.8 (1.27)
ACS93	4/0-600 MCM	4/0-477	.522-.656 (13.3)-(16.7)	.656-.893 (16.7)-(22.7)	3	3-1/4 (82.6)	2-3/4 (69.9)	2-11/16 (68.2)	2.2 (1.0)
ACS95	4/0-600 MCM	4/0-477			5	3-1/2 (88.9)	2-3/4 (69.9)	2-11/16 (68.2)	3.1 (1.41)
ACS133	600-1250 MCM	556.5-1113	.870-1.125 (21.1)-(28.6)	1.125-1.293 (28.6)-(32.8)	3	3-3/4 (95.3)	3 (76.2)	3-3/16 (80.9)	2.5 (1.14)
ACS135	600-1250 MCM	556.5-1113			5	3-3/4 (95.3)	3 (76.2)	3-3/16 (80.9)	3.4 (1.55)
ACS163	1250-2000 MCM	1113-1780	1.289-1.379 (32.0)-(35.0)	1.345-1.632 (34.2)-(41.5)	3	4-1/2 (114.3)	3-1/8 (79.4)	3-9/16 (80.9)	3.1 (1.41)
ACS165	1250-2000 MCM	1113-1780			5	4-1/2 (114.3)	3-1/8 (79.4)	3-9/16 (80.9)	3.9 (1.77)
*ACS183	2000-2500 MCM	2167-2500 MCM	1.632-1.824 (41.5)-(46.3)		3	4-3/4 (120.6)	3-1/4 (82.6)	3-5/8 (92.1)	4.3 (1.95)
*ACS185	2000-2500 MCM	2167-2500 MCM			5	4-3/4 (120.6)	3-1/4 (82.6)	3-5/8 (92.1)	4.5 (2.05)
+*ACS215	2500-3000 MCM	—	1.824-2.00 (46.3)-(50.8)		5	2-3/4 (69.9)	3 (76.2)	3-7/8 (98.4)	3.8 (1.72)
ACS225	3500	—	2.00-2.20 (50.8)-(55.88)		5	5 (127)	4 (101.6)	4-11/16 (119.1)	6.8 (3.08)

* Do not have reversible cable caps.
† Furnished with one-piece body.



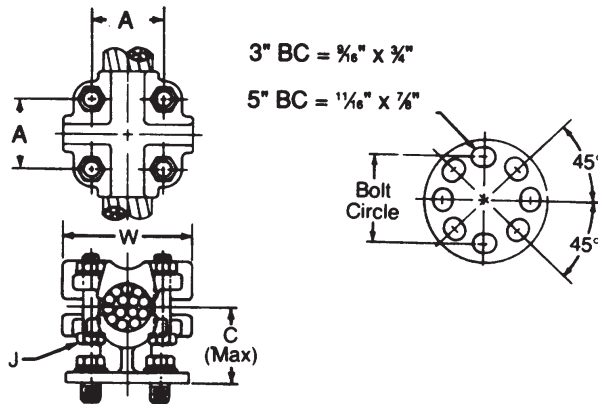
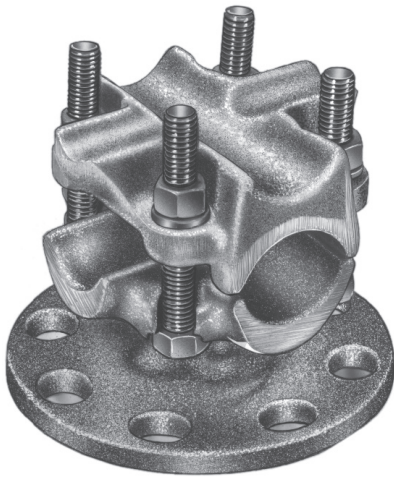
BUS SUPPORTS ALUMINUM CABLE OR TUBE TO INSULATOR

ALUMINUM
ASR

Aluminum alloy bus support for aluminum cable or tubing.

Cap screws are supplied for upright mounting.

Material: Castings—356-T6 aluminum alloy
Clamping hardware—aluminum alloy
Mounting hardware—galvanized steel



SD
2

Product Data & Conductor Size

CATALOG NUMBER	CONDUCTOR RANGE				BOLT CIRCLE DIA.	DIMENSIONS INCHES (MM)				APPROX. WT. EACH LBS. (KG)
	CABLE			TUBING IPS		A	C	W	W	
	AAC	ACSR	DIA.							
ASR2003	4/0-2000 MCM	134.6-1780 MCM	.522-1.632 (13.26-41.45)	1/4-1	3	2-1/2 (63.5)	3-1/8 (79.4)	4-1/2 (114.3)	1/2 (12.7)	4.2 (1.9)
ASR2005	4/0-2000 MCM	134.6-1780 MCM	.522-1.632 (13.26-41.45)	1/4-1	5	2-1/2 (63.5)	3-1/8 (79.4)	4-1/2 (114.3)	1/2 (12.7)	4.8 (2.18)
ASR3003	600-3000 MCM	556.5-2156 MCM	.891-1.998 (22.63-50.75)	1/2-1-1/2	3	2-3/4 (69.9)	3-1/4 (82.6)	4-3/4 (120.7)	1/2 (12.7)	4.9 (2.2)
ASR3005	600-3000 MCM	556.5-2156 MCM	.891-1.998 (22.63-50.75)	1/2-1-1/2	5	2-3/4 (69.9)	3-1/4 (82.6)	4-3/4 (120.7)	1/2 (12.7)	5.5 (2.5)



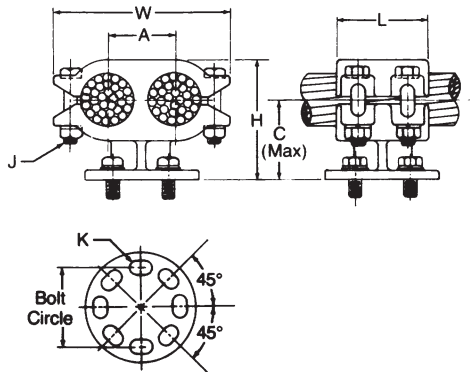
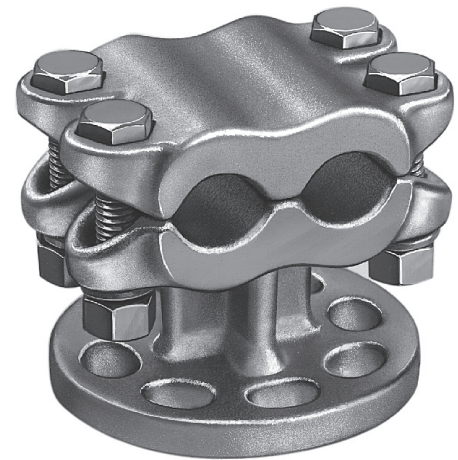
BUS SUPPORTS ALUMINUM TWO CABLES OR TUBES TO INSULATOR

ALUMINUM
ADCS

Aluminum alloy bus support for two parallel aluminum cables or tubes. Clamping bolts have hex-stops for one-wrench installation.

Cap screws are supplied for upright mounting.

Material: **Castings**—356-T6 aluminum alloy
Clamping hardware—aluminum alloy
Mounting hardware—galvanized steel



Product Data & Conductor Size

CATALOG NUMBER	CONDUCTOR RANGE				BOLT CIRCLE DIA.	DIMENSIONS INCHES (MM)							AP-PROX. WT. EACH LBS. (KG)
	CABLE			TUBING IPS		L	H	C	W	A	J	K	
	AAC	ACSR	DIA.										
ADCS503	250-556.5 MCM	159-477 MCM	.574-.875 (14.58-22.22)	3/8 -1/2	3	2-1/2 (63.5)	3-1/8 (79.4)	2-1/2 (63.5)	4 (101.6)	1-1/4 (31.75)	1/2 (12.7)	9/16 x 3/4	2.6 (1.2)
ADCS505	250-556.5 MCM	159-477 MCM	.574-.875 (14.58-22.22)	3/8 -1/2	5	2-1/2 (63.5)	3-1/8 (79.4)	2-1/2 (63.5)	4 (101.6)	1-1/4 (31.75)	1/2 (12.7)	11/16 x 7/8	2.9 (1.3)
ADCS753	550-900 MCM	556.5-795 MCM	.853-1.108 (21.67-28.14)	1/2	3	3 (76.2)	3-1/4 (82.6)	2-3/4 (69.85)	4-1/2 (114.3)	1-1/2 (38.1)	1/2 (12.7)	9/16 x 3/4	2.7 (1.2)
ADCS755	550-900 MCM	556.5-795 MCM	.853-1.108 (21.67-28.14)	1/2	5	3 (76.2)	3-1/4 (82.6)	2-3/4 (69.85)	4-9/16 (115.9)	1-1/2 (38.1)	1/2 (12.7)	11/16 x 7/8	2.8 (1.27)
ADCS1003	800-1113 MCM	795-1033.5 MCM	1.031-1.250 (26.19-31.75)	3/4-1	3	3-1/2 (88.9)	4-1/8 (104.78)	3 (76.2)	4-7/8 (123.82)	1-3/4 (44.45)	1/2 (12.7)	9/16 x 3/4	4.3 (2.0)
ADCS1005	800-1113 MCM	795-1033.5 MCM	1.031-1.250 (26.19-31.75)	3/4-1	5	3-1/2 (88.9)	4-1/4 (107.95)	3 (76.2)	4-7/8 (123.82)	1-3/4 (44.45)	1/2 (12.7)	11/16 x 7/8	4.8 (2.2)
ADCS1503	1192.5-1510.5 MCM	1113-1431 MCM	1.258-1.427 (31.95-36.24)	1	3	2-1/2 (63.5)	3-7/8 (98.42)	2-3/4 (69.85)	4-7/8 (123.82)	1-7/8 (47.62)	3/8 (9.52)	9/16 x 3/4	3.9 (1.8)
ADCS1505	1192.5-1510.5 MCM	1113-1431 MCM	1.258-1.427 (31.95-36.24)	1	5	3-1/2 (88.9)	4-3/4 (120.65)	3-3/8 (85.72)	5-1/4 (133.35)	1-7/8 (47.62)	1/2 (12.7)	11/16 x 7/8	4.9 (2.2)
ADCS2003	1300-2000 MCM	1272-1780 MCM	1.314-1.632 (33.38-41.45)	1-1/4	3	4-1/2 (114.3)	5 (127.0)	3-1/4 (82.55)	6-1/4 (158.75)	2-1/4 (57.15)	5/8 (15.88)	9/16 x 3/4	5.6 (2.6)
ADCS2005	1300-2000 MCM	1272-1780 MCM	1.314-1.632 (33.38-41.45)	1-1/4	5	4-1/2 (114.3)	5 (127.0)	3-1/4 (82.55)	6-1/4 (158.75)	2-1/4 (57.15)	5/8 (15.88)	11/16 x 7/8	6.2 (2.8)
ADCS2505	2000-2500 MCM	2034.5-2312 MCM	1.630-1.824 (41.4-46.33)	1-1/4	5	3-1/2 (88.9)	5-5/8 (142.88)	4 (101.6)	5-3/4 (146.05)	2-1/8 (53.98)	1/2 (12.7)	11/16 x 7/8	7.1 (3.2)
ADCS3005	3000 MCM	—	1.998 (50.75)	1-1/2	5	3-3/8 (92.08)	5 (127.0)	3-1/4 (82.55)	7 (177.8)	2-1/2 (63.5)	5/8 (15.88)	11/16 x 7/8	8.0 (3.6)



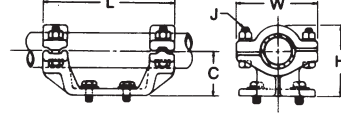
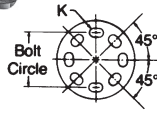
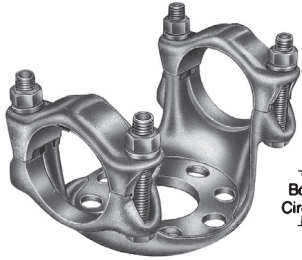
BUS SUPPORTS

ALUMINUM TUBE TO INSULATOR

ALUMINUM
AUR

Aluminum alloy bus support for aluminum tubing. Caps may be rotated to provide slip-free or rigid clamping. Stainless steel static eliminator springs are standard. Clamping bolts have hex-stops for one-wrench installation.

Cap screws are supplied for upright mounting.



Material: Castings—356-T6 aluminum alloy
Clamping hardware—aluminum alloy
Mounting hardware—galvanized steel

Product Data & Conductor Size

CATALOG NUMBER	CONDUCTOR SIZE IPS/EHIPS	BOLT CIRCLE DIA.	DIMENSIONS INCHES (MM)						APPROX. WT. EACH LBS. (KG)
			L	H	C	W	J	K	
AUR063	3/4	3	7-3/8 (187.32)	2-7/8 (73.02)	2 (50.8)	3-3/8 (85.72)	3/8 (9.52)	9/16 x 3/4	2.2 (1.0)
AUR065	3/4	5	9-3/8 (238.12)	3-1/8 (79.38)	2-1/4 (57.15)	3-3/8 (85.72)	1/2 (12.7)	11/16 x 7/8	3.1 (1.4)
AUR103	1	3	7-3/8 (187.32)	3 (76.2)	2 (50.8)	3-5/8 (92.08)	1/2 (12.7)	9/16 x 3/4	2.4 (1.1)
AUR105	1	5	9-3/8 (238.12)	3-1/4 (82.55)	2-1/4 (57.15)	3-5/8 (92.08)	1/2 (12.7)	11/16 x 7/8	3.2 (1.4)
AUR123	1-1/4	3	7-3/8 (187.32)	3-1/2 (88.9)	2-1/4 (57.15)	4 (101.6)	1/2 (12.7)	9/16 x 3/4	2.6 (1.2)
AUR125	1-1/4	5	9-3/8 (238.12)	2 (50.8)	2-3/8 (60.32)	4 (101.6)	1/2 (12.7)	11/16 x 7/8	3.2 (1.5)
AUR143	1-1/2	3	7-3/8 (187.32)	3-7/8 (98.42)	2-1/2 (63.5)	4-1/8 (104.78)	1/2 (12.7)	9/16 x 3/4	3.3 (1.5)
AUR145	1-1/2	5	9-3/8 (238.12)	4 (101.6)	2-1/2 (63.5)	4-1/8 (104.78)	1/2 (12.7)	11/16 x 7/8	3.4 (1.5)
AUR203	2	3	7-1/2 (190.5)	4-3/8 (111.12)	2-3/4 (69.85)	4-3/4 (120.65)	1/2 (12.7)	9/16 x 3/4	3.2 (1.4)
AUR205	2	5	9-1/2 (241.3)	4-3/8 (111.12)	2-3/4 (69.85)	4-3/4 (120.65)	1/2 (12.7)	11/16 x 7/8	4.4 (2.0)
AUR243	2-1/2	3	8-1/4 (209.55)	5 (127.0)	3-1/8 (79.38)	5-5/8 (142.88)	1/2 (12.7)	9/16 x 3/4	3.9 (1.8)
AUR245	2-1/2	5	10-1/4 (260.35)	5-1/8 (130.18)	3-1/8 (79.38)	5-5/8 (142.88)	1/2 (12.7)	11/16 x 7/8	5.6 (2.5)
AUR303	3	3	8-3/8 (212.72)	5-7/8 (149.22)	3-5/8 (92.08)	6-1/4 (158.75)	5/8 (15.88)	9/16 x 3/4	5.2 (2.4)
AUR305	3	5	10 (254.0)	6 (152.4)	3-5/8 (92.08)	6-1/4 (158.75)	5/8 (15.88)	11/16 x 7/8	5.9 (2.7)
AUR343	3-1/2	3	8-3/8 (212.72)	6-1/2 (165.1)	4 (101.6)	6-7/8 (174.62)	5/8 (15.88)	9/16 x 3/4	5.8 (2.6)
AUR345	3-1/2	5	10-3/8 (263.52)	6-7/8 (174.62)	4 (101.6)	6-7/8 (174.62)	5/8 (15.88)	11/16 x 7/8	6.2 (2.8)
AUR403	4	3	8-1/4 (209.55)	7-1/4 (184.15)	4-1/2 (114.3)	7-3/8 (187.32)	5/8 (15.88)	9/16 x 3/4	6.4 (2.9)
AUR405	4	5	10-1/4 (260.35)	7-1/4 (184.15)	4-1/2 (114.3)	7-3/8 (187.32)	5/8 (15.88)	11/16 x 7/8	7.4 (3.3)
AUR503	5	3	10 (254.0)	8-1/4 (209.55)	4-7/8 (123.82)	8-1/4 (209.55)	5/8 (15.88)	9/16 x 3/4	8.1 (3.7)
AUR505	5	5	10-5/8 (269.88)	8-1/4 (209.55)	4-7/8 (123.82)	8-1/4 (209.55)	5/8 (15.88)	11/16 x 7/8	9.5 (4.3)
AUR603	6	3	9-3/8 (238.12)	9-1/4 (234.95)	5-3/8 (136.52)	9-3/8 (238.12)	5/8 (15.88)	9/16 x 3/4	9.8 (4.4)
AUR605	6	5	11-1/2 (292.1)	9-1/4 (234.95)	5-3/8 (136.52)	9-3/8 (238.12)	5/8 (15.88)	11/16 x 7/8	10.9 (4.9)

SD
4



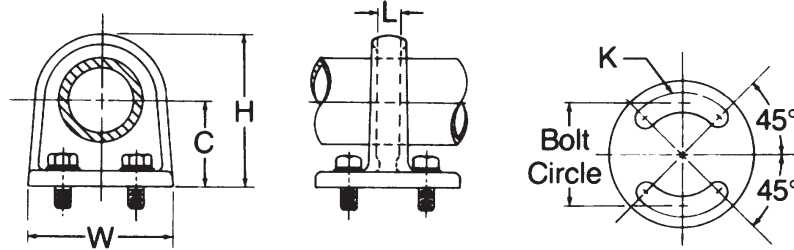
BUS SUPPORTS ALUMINUM TUBE TO INSULATOR

ALUMINUM
ATSF

Aluminum alloy, slip fit bus support for aluminum tubing. The adjustable base slots permit rotation up to 90 degrees for alignment.

Cap screws are supplied for upright mounting.

Material: Castings—356-T6 aluminum alloy
Mounting hardware—galvanized steel



Product Data & Conductor Size

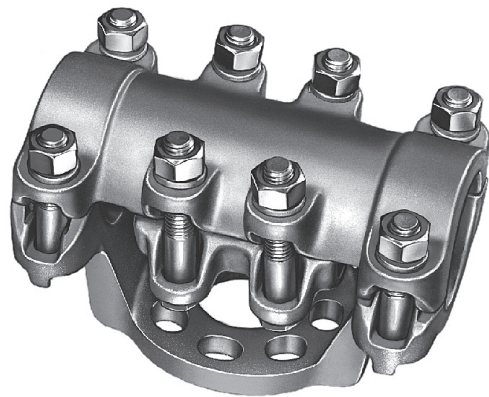
CATALOG NUMBER	CONDUCTOR SIZE IPS/EHIPS	BOLT CIRCLE DIA.	DIMENSIONS INCHES (MM)					APPROX. WT. EACH LBS. (KG)
			L	H	C	W	K	
ATSF103	1	3	1/2 (12.7)	3-3/8 (85.72)	2 (50.8)	4-1/4 (107.95)	9/16	1.5 (.68)
ATSF105	1	5	1/2 (12.7)	3-1/2 (88.9)	2-1/4 (57.15)	6-1/4 (158.75)	11/16	1.7 (.77)
ATSF143	1-1/2	3	1/2 (12.7)	4-1/8 (104.78)	2-1/2 (63.5)	4-1/4 (107.95)	9/16	1.7 (.77)
ATSF145	1-1/2	5	1/2 (12.7)	4-1/8 (104.78)	2-1/2 (63.5)	6-1/4 (158.75)	11/16	2.3 (1.0)
ATSF203	2	3	5/8 (15.88)	4-5/8 (117.48)	2-3/4 (69.85)	4-1/4 (107.95)	9/16	1.9 (.86)
ATSF205	2	5	5/8 (15.88)	4-5/8 (117.48)	2-3/4 (69.85)	6-1/4 (158.75)	11/16	2.8 (1.3)
ATSF243	2-1/2	3	3/4 (19.05)	5-3/8 (136.52)	3-1/8 (79.38)	4-1/4 (107.95)	9/16	2.2 (1.0)
ATSF245	2-1/2	5	3/4 (19.05)	5-3/8 (136.52)	3-1/8 (79.38)	6-1/4 (158.75)	11/16	3.5 (1.6)
ATSF303	3	3	1 (25.4)	6-1/4 (158.75)	3-5/8 (92.08)	4-1/4 (107.95)	9/16	3.2 (1.5)
ATSF305	3	5	1 (25.4)	6-1/8 (155.58)	3-5/8 (92.08)	6-1/4 (158.75)	11/16	3.7 (1.7)
ATSF343	3-1/2	3	1 (25.4)	7-1/8 (180.98)	4 (101.6)	4-1/4 (107.95)	9/16	3.9 (1.8)
ATSF345	3-1/2	5	1 (25.4)	6-7/8 (174.62)	4 (101.6)	6-1/4 (158.75)	11/16	4.3 (1.9)
ATSF403	4	3	1-1/8 (28.58)	7-5/8 (193.68)	4-1/2 (114.3)	4-1/4 (107.95)	9/16	4.1 (1.9)
ATSF405	4	5	1-1/8 (28.58)	7-5/8 (193.68)	4-1/2 (114.3)	6-1/4 (158.75)	11/16	4.6 (2.1)
ATSF505	5	5	1-1/8 (28.58)	8-3/4 (222.25)	4-7/8 (123.83)	6-1/4 (158.75)	11/16	5.3 (2.4)
ATSF605	6	5	1-1/8 (28.58)	9-5/8 (244.48)	5-3/8 (136.53)	6-1/4 (158.75)	11/16	6.1 (2.8)

SD
5



BUS SUPPORTS ALUMINUM TUBE TO INSULATOR (COUPLER)

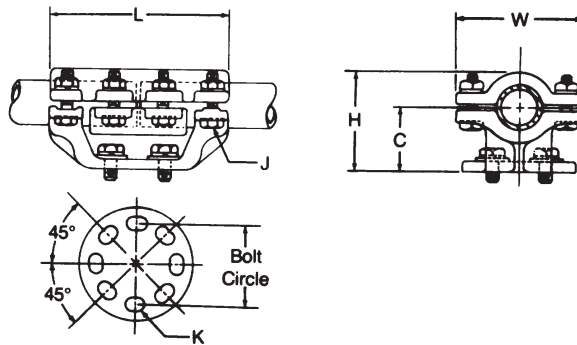
ALUMINUM
AURC



Aluminum alloy, rigid clamping bus support-coupler for aluminum tubing. Clamping bolts have hex-stops for onewrench installation.

Cap screws are supplied for upright mounting.

Material: Castings—356-T6 aluminum alloy
Clamping hardware—aluminum alloy
Mounting hardware—galvanized steel



SD
6

Product Data & Conductor Size

CATALOG NUMBER	CONDUCTOR SIZE IPS/EHIPS	BOLT CIRCLE DIA.	DIMENSIONS INCHES (MM)						APPROX. WT. EACH LBS. (KG)
			L	C	H	W	J	K	
AURC143	1-1/2	3	7-3/8 (187.32)	2-1/2 (63.5)	3-7/8 (98.42)	4-1/8 (104.78)	1/2 (12.7)	9/16 x 3/4	4.9 (2.2)
AURC145	1-1/2	5	9-3/8 (238.12)	2-1/2 (63.5)	4 (101.6)	4-1/8 (104.78)	1/2 (12.7)	11/16 x 7/8	5.2 (2.4)
AURC203	2	3	7-1/2 (190.5)	2-3/4 (69.85)	4-3/8 (111.12)	4-3/4 (120.65)	1/2 (12.7)	9/16 x 3/4	5.1 (2.3)
AURC205	2	5	9-1/2 (241.3)	2-3/4 (69.85)	4-3/8 (111.12)	4-3/4 (120.65)	1/2 (12.7)	11/16 x 7/8	6.2 (2.8)
AURC243	2-1/2	3	8-1/4 (209.55)	3-1/8 (79.38)	5 (127.0)	5-5/8 (142.88)	1/2 (12.7)	9/16 x 3/4	6.6 (3.0)
AURC245	2-1/2	5	10-1/4 (260.35)	3-1/8 (79.38)	5-1/8 (130.18)	5-5/8 (142.88)	5/8 (15.88)	11/16 x 7/8	7.5 (3.4)
AURC303	3	3	8-3/8 (212.72)	3-5/8 (92.08)	5-7/8 (149.22)	6-1/4 (158.75)	5/8 (15.88)	9/16 x 3/4	9.0 (4.1)
AURC305	3	5	10 (254.0)	3-5/8 (92.08)	6 (152.4)	6-1/4 (158.75)	5/8 (15.88)	11/16 x 7/8	10.1 (4.6)
AURC343	3-1/2	3	8-3/8 (212.72)	4 (101.6)	6-1/2 (165.1)	6-7/8 (174.62)	5/8 (15.88)	9/16 x 3/4	9.6 (4.4)
AURC345	3-1/2	5	10-3/8 (263.52)	4 (101.6)	6-7/8 (174.62)	6-7/8 (174.62)	5/8 (15.88)	11/16 x 7/8	10.4 (4.7)
AURC403	4	3	8-1/4 (209.55)	4-1/2 (114.3)	7-1/4 (184.15)	7-3/8 (187.32)	5/8 (15.88)	9/16 x 3/4	10.8 (4.9)
AURC405	4	5	10-1/4 (260.35)	4-1/2 (114.3)	7-1/4 (184.15)	7-3/8 (187.32)	5/8 (15.88)	11/16 x 7/8	12.5 (5.7)



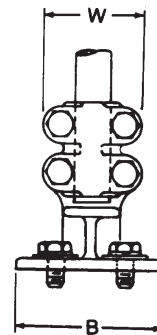
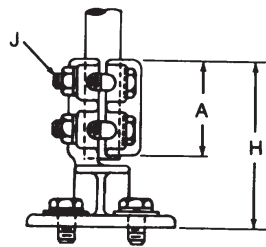
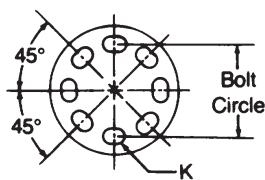
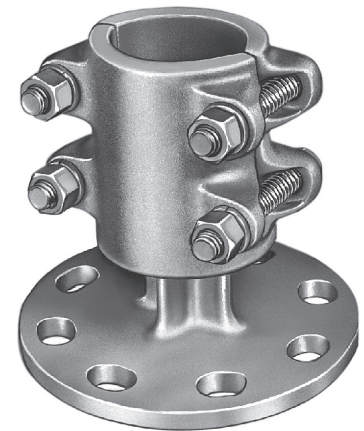
BUS SUPPORTS ALUMINUM VERTICAL TUBE TO INSULATOR

ALUMINUM
AUDE

Aluminum alloy bus support for vertical deadending aluminum tubing. Clamping bolts have hex-stops for one-wrench installation.

Cap screws are supplied for upright mounting.

Material: **Castings**—356-T6 aluminum alloy
Clamping hardware—aluminum alloy
Mounting hardware—galvanized steel



Product Data & Conductor Size

CATALOG NUMBER	CONDUCTOR SIZE IPS/EHIPS	BOLT CIRCLE DIA.	DIMENSIONS INCHES (MM)						APPROX. WT. EACH LBS. (KG)
			H	A	W	B	J	K	
AUDE103	1	3	5-1/8 (130.18)	2-3/4 (69.85)	3-1/4 (82.55)	4-1/4 (107.95)	1/2 (12.7)	9/16 x 3/4	2.3 (1.0)
AUDE105	1	5	5-1/8 (130.18)	2-3/4 (69.85)	3-1/4 (82.55)	6-1/4 (158.75)	1/2 (12.7)	11/16 x 7/8	2.8 (1.3)
AUDE123	1-1/4	3	5-1/2 (139.7)	3 (76.2)	3-5/8 (92.08)	4-1/4 (107.95)	1/2 (12.7)	9/16 x 3/4	2.7 (1.2)
AUDE125	1-1/4	5	5-1/2 (139.7)	3 (76.2)	3-5/8 (92.08)	6-1/4 (158.75)	1/2 (12.7)	11/16 x 7/8	3.2 (1.5)
AUDE143	1-1/2	3	5-3/4 (146.05)	3-1/4 (82.55)	3-7/8 (98.42)	4-1/4 (107.95)	1/2 (12.7)	9/16 x 3/4	3.1 (1.4)
AUDE145	1-1/2	5	5-3/4 (146.05)	3-1/4 (82.55)	3-7/8 (98.42)	6-1/4 (158.75)	1/2 (12.7)	11/16 x 7/8	3.6 (1.6)
AUDE203	2	3	5-7/8 (149.22)	3-1/2 (88.9)	4-3/8 (111.12)	4-1/4 (107.95)	1/2 (12.7)	9/16 x 3/4	3.2 (1.5)
AUDE205	2	5	5-7/8 (149.22)	3-1/2 (88.9)	4-3/8 (111.12)	6-1/4 (158.75)	1/2 (12.7)	11/16 x 7/8	3.9 (1.8)
AUDE243	2-1/2	3	6-5/8 (168.28)	3-3/4 (95.25)	5-1/4 (133.35)	4-1/4 (107.95)	5/8 (15.88)	9/16 x 3/4	4.0 (1.8)
AUDE245	2-1/2	5	6-5/8 (168.28)	3-3/4 (95.25)	5-1/4 (133.35)	6-1/4 (158.75)	5/8 (15.88)	11/16 x 7/8	4.6 (2.1)
AUDE303	3	3	6-5/8 (168.28)	(101.6)	5-7/8 (149.22)	4-1/4 (107.95)	5/8 (15.88)	9/16 x 3/4	5.3 (2.4)
AUDE305	3	5	6-5/8 (168.28)	(101.6)	5-7/8 (149.22)	6-1/4 (158.75)	5/8 (15.88)	11/16 x 7/8	5.8 (2.6)
AUDE403	4	3	6-3/4 (171.45)	4-1/4 (107.95)	7 (177.8)	4-1/4 (107.95)	5/8 (15.88)	9/16 x 3/4	6.3 (2.9)
AUDE405	4	5	6-5/8 (168.28)	4-1/4 (107.95)	7 (177.8)	6-1/4 (158.75)	5/8 (15.88)	11/16 x 7/8	7.0 (3.2)



BUS SUPPORTS ALUMINUM EXPANSION TUBE TO INSULATOR

ALUMINUM
AURF



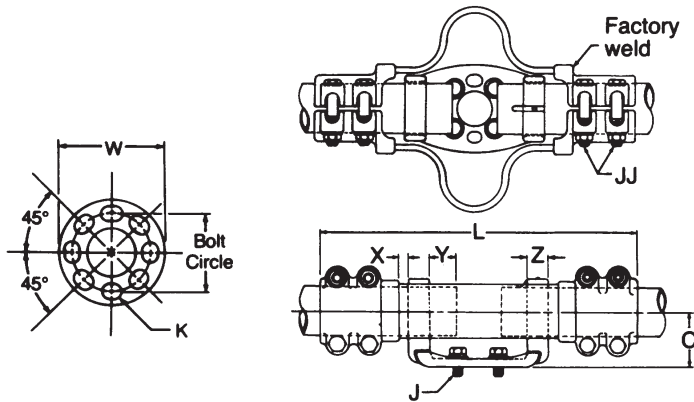
Aluminum alloy expansion bus support for aluminum tubing. Clamping bolts have hex-stops for one-wrench installation.

Cap screws are supplied for upright mounting. Contact sealant is recommended.

Material: Castings—356-T6 aluminum alloy
Factory formed laminated shunt—aluminum
Clamping hardware—aluminum alloy
Mounting hardware—galvanized steel

Note: To specify extra heavy (schedule 80 EHIPS) tubing, add "H" to catalog number; Example: AURFH405.

Refer to chart DC-6536 on page SD-9 for installation instructions.



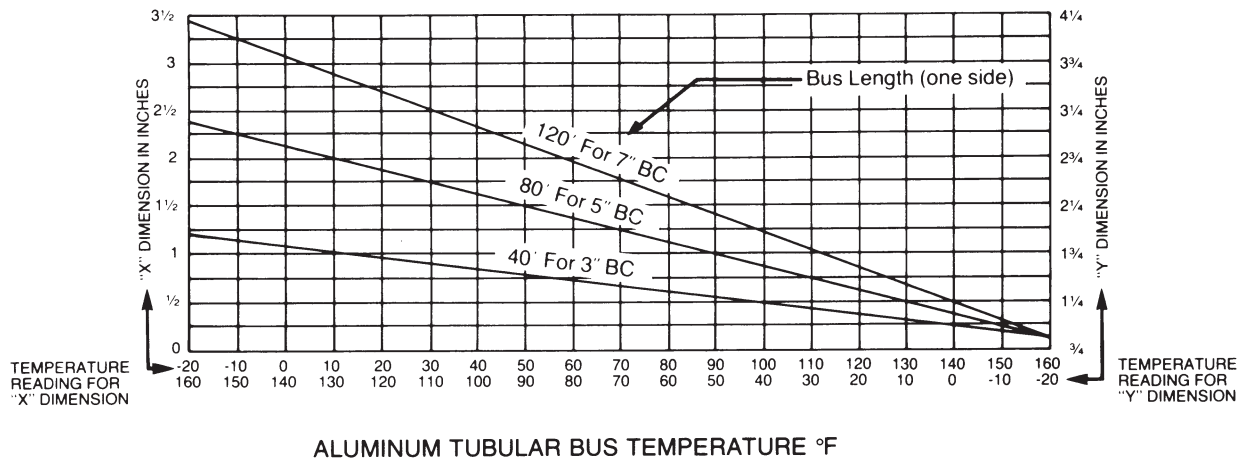
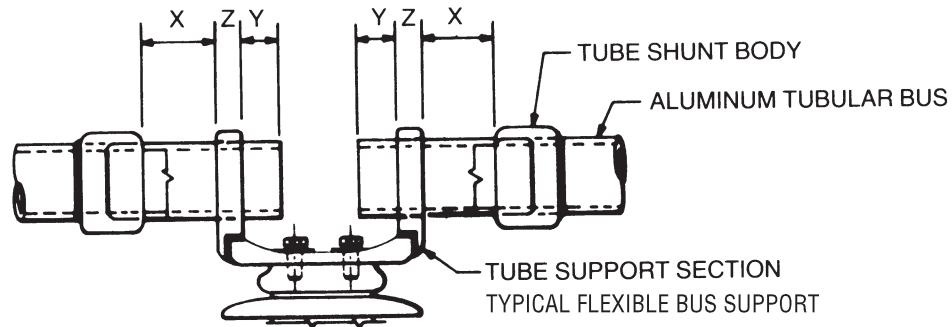
SD
8

Product Data & Conductor Size

CATALOG NUMBER	CONDUCTOR SIZE IPS/EHIPS	BOLT CIRCLE DIA.	DIMENSIONS INCHES (MM)							APPROX. WT. EACH LBS. (KG)
			L	C	W	Z	J	JJ	K	
AURF203	2	3∅	16-7/8 (428.62)	2-3/4 (69.85)	4-1/4 (107.95)	3/4 (19.05)	1/2 (12.7)	1/2 (12.7)	9/16 x 3/4	11.0 (5.0)
AURF205	2	5∅	19-7/8 (504.82)	2-3/4 (69.85)	6-1/4 (158.75)	3/4 (19.05)	5/8 (15.88)	1/2 (12.7)	11/16 x 7/8	11.8 (5.4)
AURF243	2-1/2	3∅	17-1/2 (444.5)	3-1/8 (79.38)	4-1/4 (107.95)	3/4 (19.05)	1/2 (12.7)	5/8 (15.88)	9/16 x 3/4	12.8 (5.8)
AURF245	2-1/2	5∅	20-5/8 (523.88)	3-1/8 (79.38)	6-1/4 (158.75)	3/4 (19.05)	5/8 (15.88)	5/8 (15.88)	11/16 x 7/8	13.7 (6.2)
AURF303	3	3∅	17-3/4 (450.85)	3-5/8 (92.08)	4-1/4 (107.95)	13/16 (20.64)	1/2 (12.7)	5/8 (15.88)	9/16 x 3/4	15.2 (6.9)
AURF305	3	5∅	20-7/8 (530.22)	1/2 (101.6)	6-1/4 (158.75)	13/16 (20.64)	5/8 (15.88)	5/8 (15.88)	11/16 x 7/8	16.3 (7.4)
AURF343	3-1/2	3∅	18-1/4 (463.55)	4 (101.6)	1/2-1/4 (107.95)	1 (25.4)	1/2 (12.7)	5/8 (15.88)	9/16 x 3/4	23.7 (10.8)
AURF345	3-1/2	5∅	21-3/8 (542.92)	4-1/2 (114.3)	6-1/4 (158.75)	1 (25.4)	5/8 (15.88)	5/8 (15.88)	11/16 x 7/8	25.3 (11.5)
AURF403	4	3∅	18-1/4 (463.55)	4-1/2 (114.3)	4-1/4 (107.95)	1 (25.4)	1/2 (12.7)	5/8 (15.88)	9/16 x 3/4	24.8 (11.3)
AURF405	4	5∅	21-5/8 (549.28)	4 (101.6)	6-1/4 (158.75)	1-1/4 (31.75)	5/8 (15.88)	5/8 (15.88)	11/16 x 7/8	24.6 (11.2)
AURF505	5	5∅	23-5/8 (600.08)	4-7/8 (123.82)	6-1/4 (158.75)	1-1/4 (31.75)	5/8 (15.88)	5/8 (15.88)	11/16 x 7/8	25.8 (11.7)
AURF605	6	5∅	26-1/8 (663.58)	5-3/8 (136.52)	6-1/4 (158.75)	1-1/2 (38.1)	5/8 (15.88)	5/8 (15.88)	11/16 x 7/8	26.3 (11.9)

Designed for: ∅ 3 1-1/8" expansion, 80 ft. total maximum bus length (both sides), ∅∅ 3 2-1/8" expansion, 160 ft. total maximum bus length (both sides).

INSTALLATION CHART DC-6536



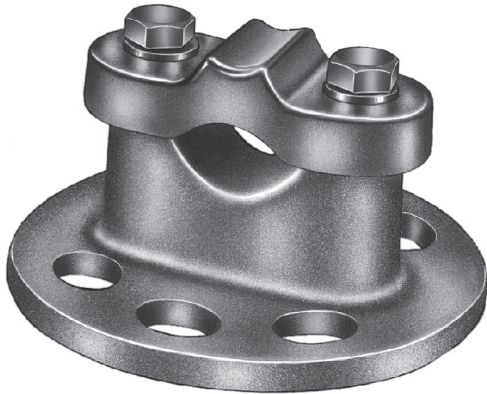
HOW TO USE CHART

1. Determine tubular bus temperature and locate this temperature on the "Temperature Reading for 'X' Dimension" scale.
2. Locate the intersection of the given bus length and the temperature reading.
3. Read "X" dimension setting from this intersection point.
4. Determine "Y" dimension in a similar manner.
5. Determine "Z" dimension from applicable ANDERSON connector assembly. The location of the tube-shunt body from the end of the tube may be determined by adding $X + Y + Z$.
6. Repeat this procedure for the tubular bus on the other side of the connector.
7. Do not exceed given bus length for each particular bolt circle.



BUS SUPPORTS BRONZE CABLE OR TUBE TO INSULATOR

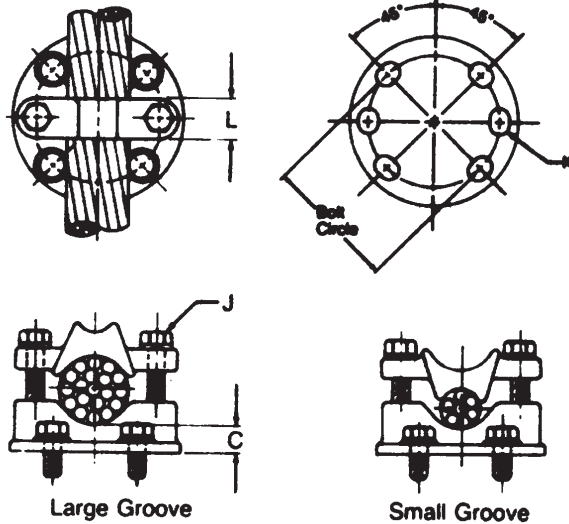
BRONZE
ICA



Bronze alloy bus support for copper cable or tubing.

Cap screws are supplied for upright mounting.

Material: Castings—bronze alloy
Clamping hardware—silicon bronze or stainless steel
Mounting hardware—galvanized steel



Large Groove

Small Groove

SD
10

Product Data & Conductor Size

CATALOG NUMBER	COPPER CONDUCTOR RANGE			BOLT CIRCLE DIA.	DIMENSIONS INCHES (MM)				APPROX. WT. EACH LBS. (KG)
	CABLE	CABLE DIA.	TUBING IPS		L	C	J	K	
ICA0253	#8 — 250 MCM	.128- .575 (3.25- 14.60)	1/8-1/4	3	1 (25.4)	5/8 (15.88)	3/8 (9.52)	9/16 x 3/4	2.0 (.91)
ICA0255	#8 — 250 MCM	.128- .575 (3.25- 14.60)	1/8-1/4	5	1 (25.4)	1-1/8 (28.58)	3/8 (9.52)	11/16 x 7/8	3.8 (1.72)
ICA1003	4/0 — 1000 MCM	.460- 1.152 (11.68- 29.26)	1/4-3/4	3	1 (25.4)	1 (25.4)	3/8 (9.52)	9/16 x 3/4	2.5 (1.13)
ICA1005	4/0 — 1000 MCM	.460- 1.152 (11.68- 29.26)	1/4-3/4	5	1 (25.4)	1 (25.4)	3/8 (9.52)	11/16 x 7/8	4.7 (2.13)
ICA2003	500 — 2000 MCM	.811- 1.632 (20.60- 41.45)	1/2-1-1/4	3	1 (25.4)	1 (25.4)	1/2 (12.7)	9/16 x 3/4	2.9 (1.32)
ICA2005	500 — 2000 MCM	.811- 1.632 (20.60- 41.45)	1/2-1-1/4	5	1-1/4 (31.75)	1 (25.4)	1/2 (12.7)	11/16 x 7/8	4.5 (2.04)
ICA3003	1000 — 3000 MCM	1.152- 1.998 (29.26- 50.75)	1-2	3	1-1/4 (31.75)	1-1/4 (31.75)	1/2 (12.7)	9/16 x 3/4	3.4 (1.54)
ICA3005	1000 — 3000 MCM	1.152- 1.998 (29.26- 50.75)	1-2	5	1-1/4 (31.75)	1-1/4 (31.75)	1/2 (12.7)	11/16 x 7/8	5.4 (2.45)



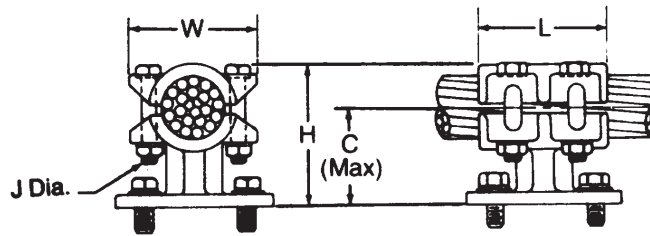
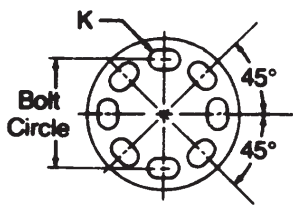
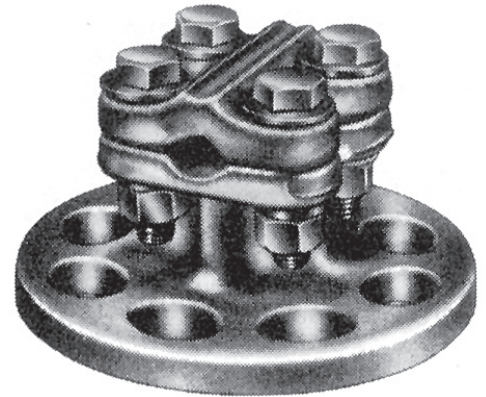
BUS SUPPORTS BRONZE CABLE OR TUBE TO INSULATOR

BRONZE
CSSB

Heavy duty, bronze alloy bus support for copper cable or tubing.

Cap screws are supplied for upright mounting.

Material: **Castings**—bronze alloy
Clamping hardware—silicon bronze or stainless steel
Mounting hardware—galvanized steel



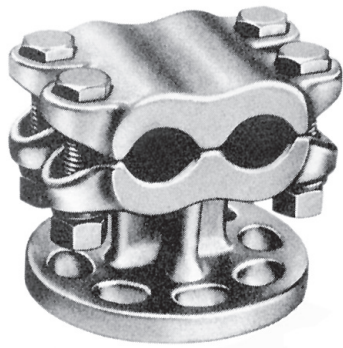
Product Data & Conductor Size

CATALOG NUMBER	COPPER CONDUCTOR RANGE			BOLT CIRCLE DIA.	DIMENSIONS INCHES (MM)						APPROX. WT. EACH LBS. (KG)
	CABLE	CABLE DIA.	TUBING IPS		L	H	C	W	J	K	
CSSB403	#8 — 4/0 Str.	.128- .528 (3.25- 13.41)	1/4	3	2-1/4 (57.15)	2-1/2 (63.5)	1-3/4 (44.45)	2-1/4 (57.15)	3/8 (9.52)	9/16 x 3/4	1.2 (.54)
CSSB405	#8 — 4/0 Str.	.128- .528 (3.25- 13.41)	1/4	5	2-1/4 (57.15)	2-1/2 (63.5)	1-3/4 (44.45)	2-1/4 (57.15)	3/8 (9.52)	11/16 x 7/8	3.0 (1.36)
CSSB503	250 — 500 MCM	.574- .813 (14.58- 20.65)	3/8 -1/2	3	2-1/4 (57.15)	2-7/8 (73.02)	2 (50.8)	2-1/4 (57.15)	3/8 (9.52)	9/16 x 3/4	1.8 (.82)
CSSB505	250 — 500 MCM	.574- .813 (14.58- 20.65)	3/8 -1/2	5	2-1/4 (57.15)	2-7/8 (73.02)	2 (50.8)	2-1/4 (57.15)	3/8 (9.52)	11/16 x 7/8	3.3 (1.50)
CSSB753	550 — 750 MCM	.853- .998 (21.67- 25.35)	1/2	3	2-1/2 (63.5)	3 (76.2)	2-1/8 (53.98)	2-5/8 (66.68)	3/8 (9.52)	9/16 x 3/4	2.9 (1.32)
CSSB755	550 — 750 MCM	.853- .998 (21.67- 25.35)	1/2	5	2-1/2 (63.5)	3 (76.2)	2-1/8 (53.98)	2-5/8 (66.68)	3/8 (9.52)	11/16 x 7/8	3.8 (1.72)
CSSB1003	800 — 1000 MCM	1.031- 1.152 (26.19- 29.26)	3/4	3	2-1/2 (63.5)	3-3/8 (85.72)	2-3/8 (60.32)	2-3/4 (69.85)	3/8 (9.52)	9/16 x 3/4	4.1 (1.86)
CSSB1005	800 — 1000 MCM	1.031- 1.152 (26.19- 29.26)	3/4	5	2-1/2 (63.5)	3-3/8 (85.72)	2-3/8 (60.32)	2-3/4 (69.85)	3/8 (9.52)	11/16 x 7/8	6.1 (2.77)
CSSB1503	1250 — 1500 MCM	1.288- 1.412 (32.72- 35.86)	1	3	2-1/2 (63.5)	3-3/4 (95.25)	2-5/8 (66.68)	2-7/8 (73.02)	3/8 (9.52)	9/16 x 3/4	6.4 (2.90)
CSSB1505	1250 — 1500 MCM	1.288- 1.412 (32.72- 35.86)	1	5	2-1/2 (63.5)	3-3/4 (95.25)	2-5/8 (66.68)	2-7/8 (73.02)	3/8 (9.52)	11/16 x 7/8	6.7 (3.04)
CSSB2003	1500 — 2000 MCM	1.411- 1.632 (35.84- 41.45)	1	3	2-1/2 (63.5)	4 (101.6)	2-3/4 (69.85)	3 (76.2)	3/8 (9.52)	9/16 x 3/4	4.7 (2.13)
CSSB2005	1500 — 2000 MCM	1.411- 1.632 (35.84- 41.45)	1	5	2-1/2 (63.5)	4 (101.6)	2-3/4 (69.85)	3 (76.2)	3/8 (9.52)	11/16 x 7/8	6.7 (3.04)
CSSB2503	2000 — 2500 MCM	1.630- 1.824 (41.40- 46.33)	1-1/4	3	2-1/2 (63.5)	4-1/4 (107.95)	2-7/8 (73.02)	3-3/8 (85.72)	3/8 (9.52)	9/16 x 3/4	4.7 (2.13)
CSSB2505	2000 — 2500 MCM	1.630- 1.824 (41.40- 46.33)	1-1/4	5	2-1/2 (63.5)	4-1/4 (107.95)	2-7/8 (73.02)	3-3/8 (85.72)	3/8 (9.52)	11/16 x 7/8	6.5 (2.95)



BUS SUPPORTS BRONZE TWO CABLES OR TUBES TO INSULATOR

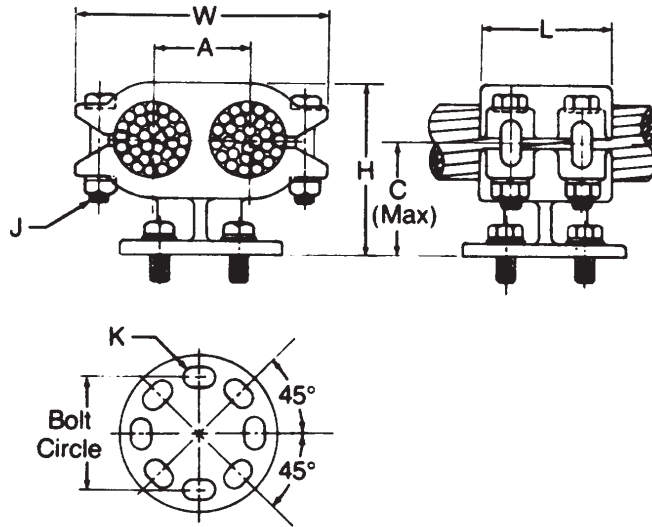
BRONZE
CDSB



Heavy duty, bronze alloy bus support for two copper cables or tubes.

Cap screws are supplied for upright mounting.

Material: Castings—bronze alloy
Clamping hardware—silicon bronze or stainless steel
Mounting hardware—galvanized steel



SD
12

Product Data & Conductor Size

CATALOG NUMBER	COPPER CONDUCTOR RANGE		BOLT CIRCLE DIA.	DIMENSIONS INCHES (MM)							APPROX. WT. EACH LBS. (KG)
	CABLE	TUBING IPS		L	H	C	W	A	J	K	
CDSB403	#8 – 4/0 Str.	1/8-1/4	3	2-1/4 (57.15)	3-1/4 (82.55)	2-1/4 (57.15)	3-3/4 (95.25)	1 (25.4)	3/8 (9.52)	9/16 x 3/4	4.6 (2.09)
CDSB405	#8 – 4/0 Str.	1/8-1/4	5	2-1/4 (57.15)	3-1/4 (82.55)	2-1/4 (57.15)	3-3/4 (95.25)	1 (25.4)	3/8 (9.52)	11/16 x 7/8	5.0 (2.27)
CDSB503	250 – 500 MCM	3/8 -1/2	3	2-1/4 (57.15)	3-1/4 (82.55)	2-3/8 (60.32)	3-5/8 (92.08)	1-1/4 (31.75)	3/8 (9.52)	9/16 x 3/4	4.0 (1.81)
CDSB505	250 – 500 MCM	3/8 -1/2	5	2-1/4 (57.15)	3-1/4 (82.55)	2-3/8 (60.32)	3-5/8 (92.08)	1-1/4 (31.75)	3/8 (9.52)	11/16 x 7/8	5.8 (2.63)
CDSB753	550 – 750 MCM	1/2	3	3 (76.2)	3-7/8 (98.42)	2-3/4 (69.85)	4-1/2 (114.3)	1-1/2 (38.1)	1/2 (12.7)	9/16 x 3/4	7.8 (3.54)
CDSB755	550 – 750 MCM	1/2	5	3 (76.2)	3-7/8 (98.42)	2-3/4 (69.85)	4-1/2 (114.3)	1-1/2 (38.1)	1/2 (12.7)	11/16 x 7/8	10.3 (4.67)
CDSB1003	800 – 1000 MCM	3/4	3	2-1/2 (63.5)	3-5/8 (92.08)	2-5/8 (66.68)	4-1/2 (114.3)	1-3/4 (44.45)	3/8 (9.52)	9/16 x 3/4	5.1 (2.31)
CDSB1005	800 – 1000 MCM	3/4	5	2-1/2 (63.5)	3-5/8 (92.08)	2-5/8 (66.68)	4-1/2 (114.3)	1-3/4 (44.45)	3/8 (9.52)	11/16 x 7/8	7.2 (3.26)
CDSB1503	1250 – 1500 MCM	1	3	2-1/2 (63.5)	3-7/8 (98.42)	2-3/4 (69.85)	4-7/8 (123.82)	1-7/8 (47.62)	3/8 (9.52)	9/16 x 3/4	5.1 (2.31)
CDSB1505	1250 – 1500 MCM	1	5	2-1/2 (63.5)	3-7/8 (98.42)	2-3/4 (69.85)	4-7/8 (123.82)	1-7/8 (47.62)	3/8 (9.52)	11/16 x 7/8	7.1 (3.22)



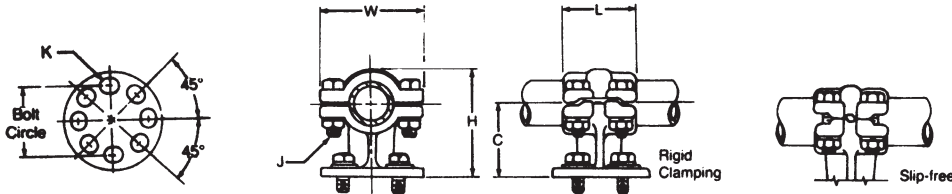
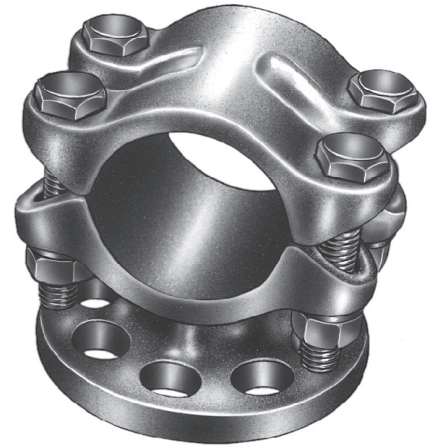
BUS SUPPORTS BRONZE TUBE TO INSULATOR

BRONZE
UP

Bronze alloy bus support for copper tubing. Slip-free or rigid clamping can be obtained by rotating cap 180 degrees. Static eliminator springs are standard.

Cap screws are supplied for upright mounting.

- Material:**
- Castings**—bronze alloy
 - Clamping hardware**—silicon bronze or stainless steel
 - Mounting hardware**—galvanized steel
 - Spring**—stainless steel



Product Data & Conductor Size

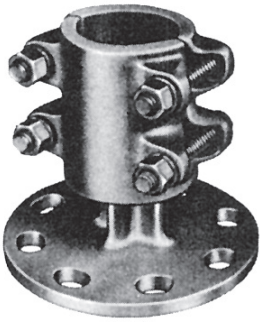
CATALOG NUMBER	CONDUCTOR SIZE IPS	BOLT CIRCLE DIA.	DIMENSIONS INCHES (MM)						APPROX. WT. EACH LBS. (KG)
			L	H	C	W	J	K	
UP063	3/4	3	2 (50.8)	2-7/8 (73.02)	2 (50.8)	3 (76.2)	3/8 (9.52)	9/16 x 3/4	3.7 (1.68)
UP065	3/4	5	2 (50.8)	3-1/8 (79.38)	2-1/4 (57.15)	3 (76.2)	3/8 (9.52)	11/16 x 7/8	6.3 (2.86)
UP103	1	3	2 (50.8)	3 (76.2)	2 (50.8)	3-1/4 (82.55)	3/8 (9.52)	9/16 x 3/4	3.8 (1.72)
UP105	1	5	2 (50.8)	3-1/4 (82.55)	2-1/4 (57.15)	3-1/4 (82.55)	3/8 (9.52)	11/16 x 7/8	6.4 (2.90)
UP123	1-1/4	3	2-3/4 (69.85)	3-1/2 (88.9)	2-1/4 (57.15)	4 (101.6)	1/2 (12.7)	9/16 x 3/4	5.4 (2.45)
UP125	1-1/4	5	2-3/4 (69.85)	3-5/8 (92.08)	2-3/8 (60.32)	4 (101.6)	1/2 (12.7)	11/16 x 7/8	7.9 (3.58)
UP143	1-1/2	3	3 (76.2)	4 (101.6)	2-1/2 (63.5)	4-1/4 (107.95)	1/2 (12.7)	9/16 x 3/4	6.3 (2.86)
UP145	1-1/2	5	3 (76.2)	4 (101.6)	2-1/2 (63.5)	4-1/4 (107.95)	1/2 (12.7)	11/16 x 7/8	8.5 (3.86)
UP203	2	3	3 (76.2)	4-3/8 (111.12)	2-3/4 (69.85)	4-7/8 (123.82)	1/2 (12.7)	9/16 x 3/4	6.4 (2.90)
UP205	2	5	3 (76.2)	4-3/8 (111.12)	2-3/4 (69.85)	4-7/8 (123.82)	1/2 (12.7)	11/16 x 7/8	9.0 (4.08)
UP243	2-1/2	3	3 (76.2)	5 (127.0)	3-1/8 (79.38)	5-5/8 (142.88)	1/2 (12.7)	9/16 x 3/4	7.8 (3.54)
UP245	2-1/2	5	3 (76.2)	5 (127.0)	3-1/8 (79.38)	5-5/8 (142.88)	1/2 (12.7)	11/16 x 7/8	9.9 (4.49)
UP303	3	3	3 (76.2)	5-7/8 (149.22)	3-5/8 (92.08)	6-3/4 (171.45)	5/8 (15.88)	9/16 x 3/4	9.9 (4.49)
UP305	3	5	3 (76.2)	5-7/8 (149.22)	3-5/8 (92.08)	6-3/4 (171.45)	5/8 (15.88)	11/16 x 7/8	12.1 (5.49)
UP343	3-1/2	3	3-1/4 (82.55)	6-1/2 (165.1)	4 (101.6)	7-1/2 (190.5)	5/8 (15.88)	9/16 x 3/4	12.2 (5.53)
UP345	3-1/2	5	3-1/4 (82.55)	6-1/2 (165.1)	4 (101.6)	7-1/2 (190.5)	5/8 (15.88)	11/16 x 7/8	14.6 (6.62)
UP403	4	3	3-1/2 (88.9)	7-1/4 (184.15)	4-1/2 (114.3)	8 (203.2)	5/8 (15.88)	9/16 x 3/4	14.7 (6.68)
UP405	4	5	3-1/2 (88.9)	7-1/4 (184.15)	4-1/2 (114.3)	8 (203.2)	5/8 (15.88)	11/16 x 7/8	17.5 (7.85)

SD
13



BUS SUPPORTS BRONZE VERTICAL TUBE TO INSULATOR

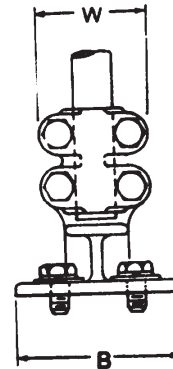
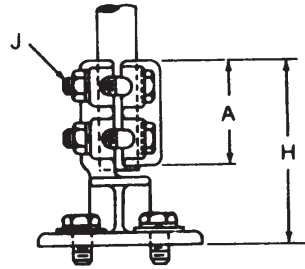
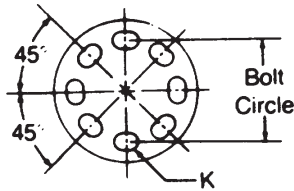
BRONZE
UDE



Bronze alloy bus support for vertical deadending copper tubing. Clamping bolts have hex-stops for one-wrench installation.

Cap screws are supplied for upright mounting.

Material: **Castings**—bronze alloy
Clamping hardware—silicon bronze or stainless steel
Mounting hardware—galvanized steel



SD
14

Product Data & Conductor Size

CATALOG NUMBER	CONDUCTOR SIZE IPS	BOLT CIRCLE DIA.	DIMENSIONS INCHES (MM)					APPROX. WT. EACH LBS. (KG)
			H	A	W	J	K	
UDE063	3/4	3	5 (127.0)	3-1/8 (79.38)	2-1/2 (63.5)	3/8 (9.52)	9/16 x 3/4	4.6 (2.09)
UDE103	1	3	5 (127.0)	3-1/8 (79.38)	2-7/8 (73.02)	3/8 (9.52)	9/16 x 3/4	5.3 (2.40)
UDE105	1	5	5 (127.0)	3-1/8 (79.38)	2-7/8 (73.02)	3/8 (9.52)	11/16 x 7/8	6.1 (2.77)
UDE123	1-1/4	3	4-3/4 (120.65)	2-7/8 (73.02)	3-5/8 (92.08)	1/2 (12.7)	9/16 x 3/4	5.8 (2.63)
UDE125	1-1/4	5	4-3/4 (120.65)	2-7/8 (73.02)	3-5/8 (92.08)	1/2 (12.7)	11/16 x 7/8	6.5 (2.95)
UDE143	1-1/2	3	5-1/4 (133.35)	3-1/8 (79.38)	3-3/4 (95.25)	1/2 (12.7)	9/16 x 3/4	6.3 (2.86)
UDE145	1-1/2	5	5-1/4 (133.35)	3-1/8 (79.38)	3-3/4 (95.25)	1/2 (12.7)	11/16 x 7/8	9.0 (4.08)
UDE203	2	3	5-7/8 (149.22)	3-5/8 (92.08)	4-3/8 (111.12)	1/2 (12.7)	9/16 x 3/4	9.5 (4.31)
UDE205	2	5	5-7/8 (149.22)	3-5/8 (92.08)	4-3/8 (111.12)	1/2 (12.7)	11/16 x 7/8	9.8 (4.44)



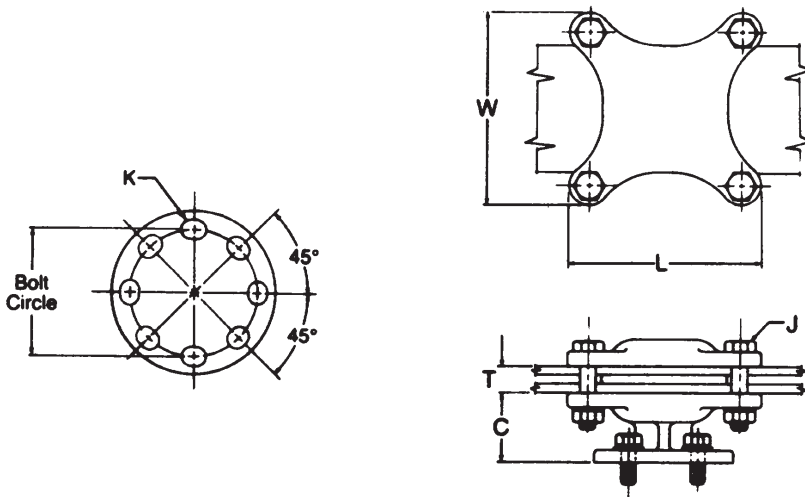
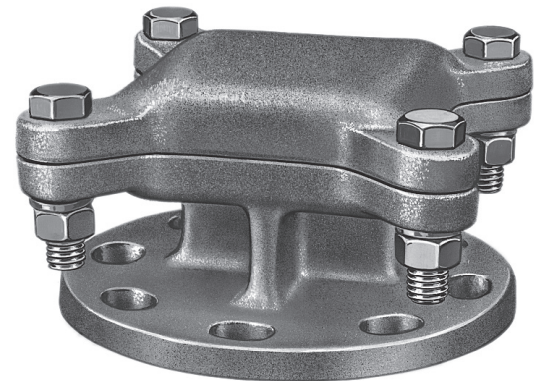
BUS SUPPORTS BRONZE FLAT BAR TO INSULATOR

BRONZE
BHX

Bronze alloy bus support for copper flat bar.

Cap screws are supplied for upright mounting.

Material: **Castings**—bronze alloy
Clamping hardware—silicon bronze or stainless steel
Mounting hardware—galvanized steel



SD
15

Product Data & Conductor Size

CATALOG NUMBER	FLAT BAR SIZE INCHES	BOLT CIRCLE DIA.	DIMENSIONS INCHES (MM)						APPROX. WT. EACH LBS. (KG)
			L	C	T	W	J	K	
BHX403T	4	3	5-7/8 (149.22)	2-1/2 (63.5)	*	5-7/8 (149.22)	1/2 (12.7)	9/16 x 3/4	8.0 (3.63)
BHX405T	4	5	5-7/8 (149.22)	2-1/2 (63.5)	*	5-7/8 (149.22)	1/2 (12.7)	11/16 x 7/8	10.5 (4.76)
BHX503T	5	3	6-7/8 (174.62)	2-1/2 (63.5)	*	6-7/8 (174.62)	1/2 (12.7)	9/16 x 3/4	10.9 (4.94)
BHX603T	6	3	8-1/4 (209.55)	2-1/2 (63.5)	*	8-1/4 (209.55)	5/8 (15.88)	9/16 x 3/4	14.9 (6.76)
BHX605T	6	5	8-1/4 (209.55)	2-1/2 (63.5)	*	8-1/4 (209.55)	5/8 (15.88)	11/16 x 7/8	17.3 (7.85)

* Total thickness of bars and spacers to be specified. Example: BHX20334



BUS SUPPORTS BRONZE VERTICAL SLIP TYPE FLAT BAR TO INSULATOR

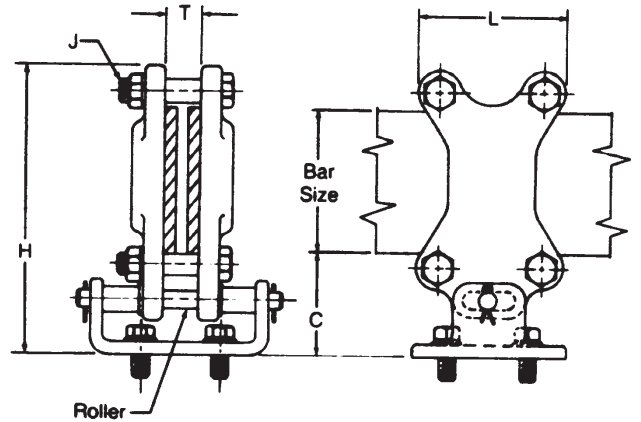
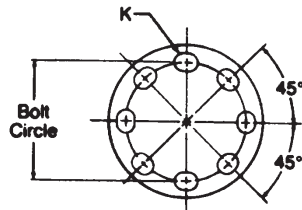
BRONZE
BVXA



Bronze alloy, slide type bus support for copper flat bar. Roller allows 3 5/8" bus expansion.

Cap screws are supplied for upright mounting.

- Material:** Castings—bronze alloy
Clamping hardware—silicon bronze or stainless steel
Mounting hardware—galvanized steel
Roller—stainless steel



SD
16

Product Data & Conductor Size

CATALOG NUMBER	FLAT BAR SIZE INCHES	BOLT CIRCLE DIA.	DIMENSIONS INCHES (MM)						APPROX. WT. EACH LBS. (KG)
			L	H	C	T	J	K	
BVXA403T	4	3	3-7/8 (98.42)	8 (203.2)	3 (76.2)	*	1/2 (12.7)	9/16 x 3/4	8.9 (4.04)
BVXA503T	5	3	4-7/8 (123.82)	9 (228.6)	3 (76.2)	*	1/2 (12.7)	9/16 x 3/4	9.7 (4.40)
BVXA505T	5	5	4-7/8 (123.82)	9 (228.6)	3 (76.2)	*	1/2 (12.7)	11/16 x 7/8	12.9 (5.85)
BVXA603T	6	3	6-1/4 (158.75)	10-3/8 (263.52)	3 (76.2)	*	5/8 (15.88)	9/16 x 3/4	18.3 (8.30)

* Total thickness of bars and spacers to be specified. Example: BVXA403112



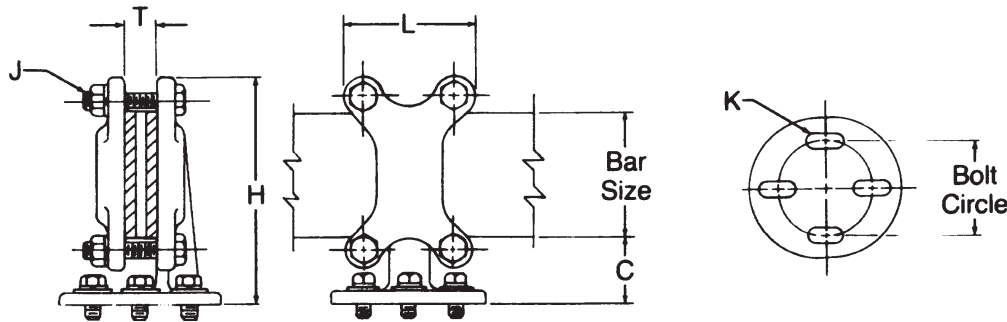
BUS SUPPORTS BRONZE VERTICAL RIGID FLAT BAR TO INSULATOR

BRONZE
BVX

Bronze alloy bus support for copper flat bar.

Cap screws are supplied for upright mounting.

- Material:** **Castings**—bronze alloy
Clamping hardware—silicon bronze or stainless steel
Mounting hardware—galvanized steel



SD
17

Product Data & Conductor Size

CATALOG NUMBER	FLAT BAR SIZE		BOLT CIRCLE DIA.	DIMENSIONS INCHES (MM)						APPROX. WT. EACH LBS. (KG)
	MAIN	TAP		L	H	C	T	J	K	
BVX403T	4	2	3	3-7/8 (98.42)	8 (203.2)	3 (76.2)	*	1/2 (12.7)	9/16 x 3/4	8.8 (3.99)
BVX405T	4	2	5	5-3/4 (146.05)	7-7/8 (200.02)	3 (76.2)	*	1/2 (12.7)	11/16 x 7/8	10.1 (4.58)
BVX503T	5	3	3	4-3/4 (120.65)	8-7/8 (225.42)	3 (76.2)	*	1/2 (12.7)	9/16 x 3/4	9.4 (4.26)
BVX603T	6	4	3	6-1/4 (158.75)	10-1/4 (260.35)	3-1/8 (79.38)	*	5/8 (15.88)	9/16 x 3/4	16.3 (7.39)
BVX605T	6	4	5	6 (152.4)	10-3/8 (263.52)	3-1/8 (79.38)	*	5/8 (15.88)	11/16 x 7/8	17.6 (7.98)

* Total thickness of bars and spacers to be specified; example: BVX403T



ALUMINUM WELDMENT CONNECTORS

INTRODUCTION

Welded joints of aluminum conductors offer advantages over bolted and compression fittings in performance and economy for certain applications. This is especially true when the proper welding method (MIG or TIG) and the proper weldment connectors are selected.

The best electrical joints are obtained when quality connectors of proven performance, that are backed by a reputable connector manufacturer, are installed with the proper welding methods.

Electric arc welding, with an inert gas shield, provides electrically and mechanically sound joints that require no special surface preparation other than cleaning of the joint to be welded. There is no contact resistance in a properly welded joint. The resulting connection is highly efficient and adds very little bulk to the conductors.

From an economic standpoint, welded joints are more feasible in larger substations that can justify the services of experienced welders and the use of the proper welding apparatus. Practically all types of joints for joining aluminum angle bar, sheet and tubular bus are possible through the use of proper welding accessories. It is also practical to weld tubular bus to cable and cable terminal joints through proper welding techniques and cable connectors. Of course, proper provision must be made to free the cable of high stresses in the vicinity of the weld because of the annealed conductor strands.

Many techniques have been developed for the welded assembly of aluminum conductors in substations, but certain ones have been found to offer more advantages than others. Accessories in the form of cast aluminum weldment connectors have been developed to facilitate the joining and supporting of aluminum conductors. These connectors, as developed by Anderson, have been designed to provide:

1. Rigid support and proper alignment.
2. Fast assembly without need for tedious forming and fitting of bus.
3. Continuous welds of regular contours that provide a weld area equivalent to 1-10% of the cross sectional area of the connector.
4. Neat appearance without bulky additions beyond the size and shape of the conductors.
5. Smooth contours suitable for high voltage applications where corona and R.I.V. level are of concern.
6. Flexible couplers to compensate for expansion and contraction of bus.
7. Many other features available for specific applications.

Anderson supplies cast weldment fittings of 356 aluminum alloy which are heat treated to T6 condition for applications requiring high strength and good electrical conductivity. It is wise to choose the filler alloy on the basis of the parent metal alloys to be joined. A poor choice can cause various difficulties, i.e.,

1. Low strength.
2. Weld cracking.
3. Poor corrosion resistance.
4. Poor color matching.
5. Difficulty in welding.

The filler rod material recommended by Anderson for joining 356-T6 cast aluminum fittings to EC grade aluminum conductor materials is 4043 alloy. This filler material has a typical conductivity of 40 per cent (IACS). Although it would appear that a purer material should be used for welding aluminum castings and the EC grades of conductor materials, the resulting joint usually has a lower resistance than an equivalent length of conductor. Also, a further point for consideration is that 4043 alloy is considerably easier to weld than the higher purity filler materials.

For more information on Welding Methods and Apparatus, see reference section ST.



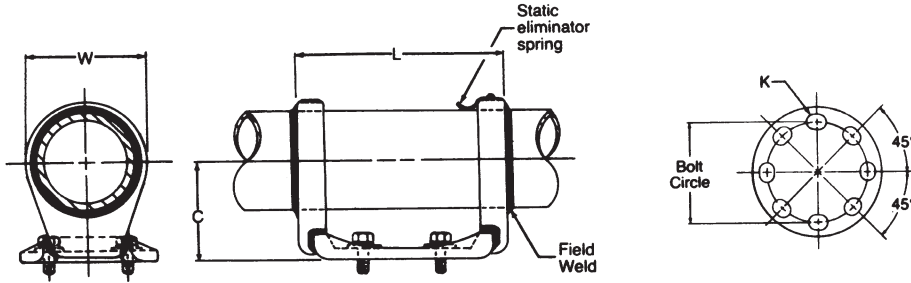
BUS SUPPORTS ALUMINUM WELDMENT TUBE TO INSULATOR

ALUMINUM
WURE

Aluminum alloy horizontal weldment bus support for aluminum tubing. Designed for slip-fit or rigid applications.

Cap screws are supplied for upright mounting. Static eliminator spring furnished as standard.

Material: Castings—356-T6 aluminum alloy
Mounting hardware—galvanized steel
Static spring—stainless steel



Product Data & Conductor Size

CATALOG NUMBER	ALUMINUM CONDUCTOR SIZE IPS /EHIPS	BOLT CIRCLE DIA.	DIMENSIONS INCHES (MM)				APPROX. WT. EACH LBS. (KG)
			L	C	W	K	
WURE103	1	3	6-1/2 (165.1)	2 (50.8)	3 (76.2)	9/16 x 3/4	1.5 (.68)
WURE123	1-1/4	3	6-1/2 (165.1)	2-1/2 (63.5)	3 (76.2)	9/16 x 3/4	1.7 (.77)
WURE143	1-1/2	3	6-1/2 (165.1)	2-1/2 (63.5)	3 (76.2)	9/16 x 3/4	1.7 (.77)
WURE145	1-1/2	5	9-1/8 (231.78)	2-1/2 (63.5)	3 (76.2)	11/16 x 7/8	2.3 (1.04)
WURE203	2	3	6-1/2 (165.1)	2-3/4 (69.85)	3-1/4 (82.55)	9/16 x 3/4	2.5 (1.13)
WURE205	2	5	9-1/8 (231.78)	2-3/4 (69.85)	3-1/4 (82.55)	11/16 x 7/8	3.0 (1.36)
WURE243	2-1/2	3	6-1/2 (165.1)	3-1/8 (79.38)	3-3/4 (95.25)	9/16 x 3/4	2.8 (1.27)
WURE245	2-1/2	5	9-1/8 (231.78)	3-1/8 (79.38)	3-3/4 (95.25)	11/16 x 7/8	3.2 (1.45)
WURE303	3	3	6-1/2 (165.1)	3-5/8 (92.08)	4-1/2 (114.3)	9/16 x 3/4	2.7 (1.22)
WURE305	3	5	9-1/8 (231.78)	3-5/8 (92.08)	4-1/2 (114.3)	11/16 x 7/8	3.4 (1.54)
WURE343	3-1/2	3	6-1/2 (165.1)	4 (101.6)	5-1/4 (133.35)	9/16 x 3/4	4.2 (1.90)
WURE345	3-1/2	5	9-1/8 (231.78)	4 (101.6)	5-1/4 (133.35)	11/16 x 7/8	4.7 (2.13)
WURE403	4	3	6-1/2 (165.1)	4-1/2 (114.3)	5- 5/8 (142.88)	9/16 x 3/4	3.9 (1.77)
WURE405	4	5	9-3/8 (238.12)	4-1/2 (114.3)	5- 5/8 (142.88)	11/16 x 7/8	5.7 (2.58)
WURE505	5	5	9-3/8 (238.12)	4-7/8 (123.82)	6-3/4 (171.45)	11/16 x 7/8	6.1 (2.77)
WURE605	6	5	9-7/8 (250.82)	5- 3/8 (136.52)	7-3/4 (196.85)	11/16 x 7/8	6.9 (3.13)

SD
19



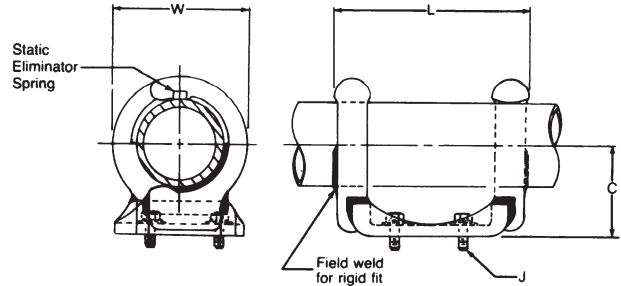
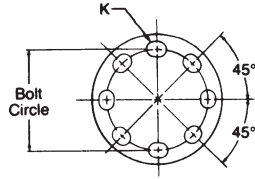
BUS SUPPORTS ALUMINUM WELDMENT TUBE TO INSULATOR

ALUMINUM
WTH

Aluminum alloy horizontal weldment bus support for aluminum tubing. Designed for slip-fit or rigid applications.

Cap screws are supplied for upright mounting. Static eliminator spring furnished as standard.

Material: Castings—356-T6 aluminum alloy
Mounting hardware—galvanized steel
Static spring—stainless steel



Product Data & Conductor Size

CATALOG NUMBER	ALUMINUM CONDUCTOR SIZE IPS /EHIPS	BOLT CIRCLE DIA.	DIMENSIONS INCHES (MM)					APPROX. WT. EACH LBS. (KG)
			L	C	W	J	K	
WTH103	1	3	6-3/4 (171.45)	2 (50.8)	3 (76.2)	1/2 (12.7)	9/16 x 3/4	2.2 (2.0)
WTH105	1	5	9-3/8 (238.12)	2-1/4 (57.15)	3 (76.2)	5/8 (15.88)	11/16 x 7/8	2.7 (1.22)
WTH123	1-1/4	3	6-3/4 (171.45)	2-1/4 (57.15)	3-1/4 (82.55)	1/2 (12.7)	9/16 x 3/4	2.0 (.91)
WTH125	1-1/4	5	9-3/8 (238.12)	2-3/8 (60.32)	3-1/4 (82.55)	5/8 (15.88)	11/16 x 7/8	2.3 (1.04)
WTH143	1-1/2	3	6-3/4 (171.45)	2-1/2 (63.5)	3-1/2 (88.9)	1/2 (12.7)	9/16 x 3/4	2.04 (1.09)
WTH145	1-1/2	5	9-3/8 (238.12)	2-1/2 (63.5)	3-1/2 (88.9)	5/8 (15.88)	11/16 x 7/8	3.2 (1.45)
WTH203	2	3	6-3/4 (171.45)	2-3/4 (69.85)	4 (101.6)	1/2 (12.7)	9/16 x 3/4	2.5 (1.13)
WTH205	2	5	9-3/8 (238.12)	2-3/4 (69.85)	4 (101.6)	5/8 (15.88)	11/16 x 7/8	3.7 (1.68)
WTH243	2-1/2	3	6-3/4 (171.45)	3-1/8 (79.38)	4-1/2 (114.3)	1/2 (12.7)	9/16 x 3/4	2.6 (1.18)
WTH245	2-1/2	5	9-3/8 (238.12)	3-1/8 (79.38)	4-1/2 (114.3)	5/8 (15.88)	11/16 x 7/8	3.8 (1.72)
WTH303	3	3	6-3/4 (171.45)	3-5/8 (92.08)	5-1/2 (139.7)	1/2 (12.7)	9/16 x 3/4	3.0 (1.36)
WTH305	3	5	9-3/8 (238.12)	3-5/8 (92.08)	5-1/2 (139.7)	5/8 (15.88)	11/16 x 7/8	4.1 (1.86)
WTH343	3-1/2	3	6-3/4 (171.45)	4 (101.6)	5-7/8 (149.22)	1/2 (12.7)	9/16 x 3/4	2.7 (1.22)
WTH345	3-1/2	5	9-3/8 (238.12)	4 (101.6)	5-7/8 (149.22)	5/8 (15.88)	11/16 x 7/8	3.6 (1.63)
WTH403	4	3	9-1/8 (231.78)	4-1/2 (114.3)	6-1/2 (165.1)	1/2 (12.7)	9/16 x 3/4	3.9 (1.77)
WTH405	4	5	9-3/8 (238.12)	4-1/2 (114.3)	6-1/2 (165.1)	5/8 (15.88)	11/16 x 7/8	4.8 (2.18)
WTH407	4	7	11-3/4 (298.45)	4-1/2 (114.3)	6-1/2 (165.1)	5/8 (15.88)	13/16 x 1	5.5 (10.6)

Continued on next page.

SD
20



BUS SUPPORTS ALUMINUM WELDMENT TUBE TO INSULATOR (CONTINUED)

Product Data & Conductor Size								
CATALOG NUMBER	ALUMINUM CONDUCTOR SIZE IPS /EHIPS	BOLT CIRCLE DIA.	DIMENSIONS INCHES (MM)					APPROX. WT. EACH LBS. (KG)
			L	C	W	J	K	
WTH503	5	3	9-3/8 (238.12)	4-7/8 (123.82)	7-7/8 (200.02)	1/2 (12.7)	9/16 x 3/4	4.6 (2.09)
WTH505	5	5	9-3/8 (238.12)	4-7/8 (123.82)	7-7/8 (200.02)	5/8 (15.88)	11/16 x 7/8	5.0 (2.27)
WTH507	5	7	11-3/4 (298.42)	4-7/8 (123.82)	7-7/8 (200.02)	3/4 (19.05)	13/16 x 1	5.7 (2.58)
WTH603	6	3	9-3/8 (238.12)	5-3/8 (136.52)	9-1/8 (231.78)	1/2 (12.7)	9/16 x 3/4	4.9 (2.22)
WTH605	6	5	9-3/8 (238.12)	5-3/8 (136.52)	9-1/8 (231.78)	5/8 (15.88)	11/16 x 7/8	5.7 (2.58)
WTH607	6	7	11-3/4 (298.42)	5-3/8 (136.52)	9-1/8 (231.78)	3/4 (19.05)	13/16 x 1	6.9 (3.13)

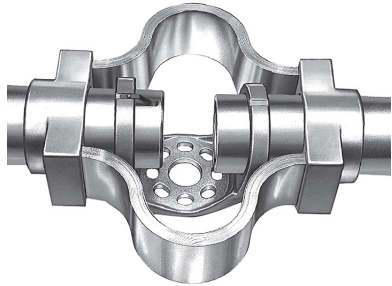
SD
21



BUS SUPPORTS

ALUMINUM WELDMENT EXPANSION TUBE TO INSULATOR

ALUMINUM
WURF

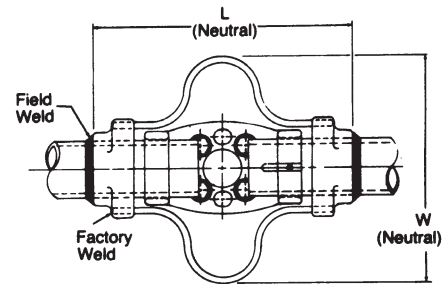
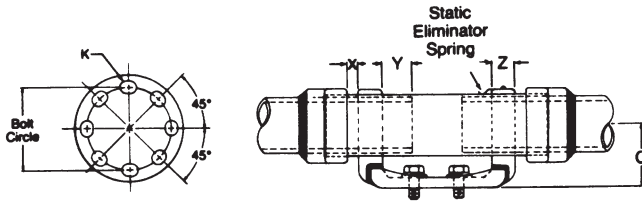


Aluminum alloy, horizontal weldment, expansion bus support for aluminum tubing. Add "H" to catalog number (WURFH) if schedule 80 EHIPS tubing is to be used. Static eliminator spring is furnished as standard.

Cap screws are supplied for upright mounting.

Material: Castings—356-T6 aluminum alloy
 Factory formed laminated shunt—aluminum
 Hardware—galvanized steel
 Static spring—stainless steel

Refer to chart DC-6536 on page SD-9 for installation instructions.



Product Data & Conductor Size

CATALOG NUMBER	ALUMINUM CONDUCTOR SIZE IPS	BOLT CIRCLE DIA.	DIMENSIONS INCHES (MM)					APPROX. WT. EACH LBS. (KG)
			L	C	Z	W	K	
WURF203	2	3 ∅	11 (279.4)	2-3/4 (69.85)	3/4 (19.05)	12-3/8 (314.32)	9/16 x 3/4	7.7 (3.49)
WURF205	2	5 ∅	14-1/8 (358.78)	2-3/4 (69.85)	3/4 (19.05)	13 (330.2)	11/16 x 7/8	9.1 (4.13)
WURF243	2-1/2	3 ∅	11 (279.4)	3-1/8 (79.38)	3/4 (19.05)	10-5/8 (269.88)	9/16 x 3/4	7.8 (3.54)
WURF245	2-1/2	5 ∅	14-1/8 (358.78)	3-1/8 (79.38)	3/4 (19.05)	12-7/8 (327.02)	11/16 x 7/8	9.9 (4.49)
WURF303	3	3 ∅	11 (279.4)	3-5/8 (92.08)	13/16 (20.64)	13-3/8 (339.72)	9/16 x 3/4	11.2 (5.08)
WURF305	3	5 ∅	14-1/8 (358.78)	3-5/8 (92.08)	13/16 (20.64)	15-7/8 (403.22)	11/16 x 7/8	12.6 (5.72)
WURF343	3-1/2	3 ∅	11 (279.4)	4 (101.6)	1 (25.4)	14 (355.6)	9/16 x 3/4	18.4 (8.35)
WURF345	3-1/2	5 ∅	14-1/8 (358.78)	4 (101.6)	1 (25.4)	14-3/8 (365.12)	11/16 x 7/8	21.9 (9.93)
WURF403	4	3 ∅	11 (279.4)	4-1/2 (114.3)	1 (25.4)	14-3/4 (374.65)	9/16 x 3/4	20.8 (9.43)
WURF405	4	5 ∅	14-3/8 (365.12)	4-1/2 (114.3)	1-1/4 (31.75)	17 (431.8)	11/16 x 7/8	19.8 (8.98)
WURF503	5	3 ∅	11-1/2 (292.1)	4-7/8 (123.82)	1-1/4 (31.75)	17 (431.8)	9/16 x 3/4	27.4 (12.43)
WURF505	5	5 ∅	14-3/8 (365.12)	4-7/8 (123.82)	1-1/4 (31.75)	18-1/8 (460.38)	11/16 x 7/8	23.1 (10.48)
WURF605	6	5 ∅	14-7/8 (377.82)	5-3/8 (136.52)	1-1/2 (38.1)	19-1/4 (488.95)	11/16 x 7/8	32.7 (14.83)

Designed for ∅ 3 1-1/8" expansion, 80 ft. maximum total bus length (both sides)
 ∅ 3 2-1/8" expansion, 160 ft. maximum total bus length (both sides)

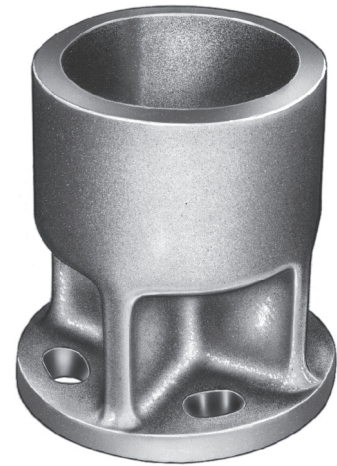
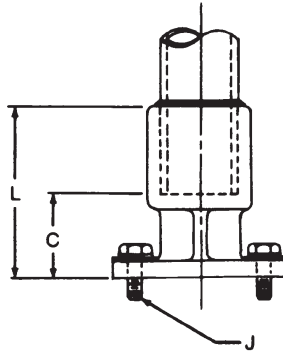
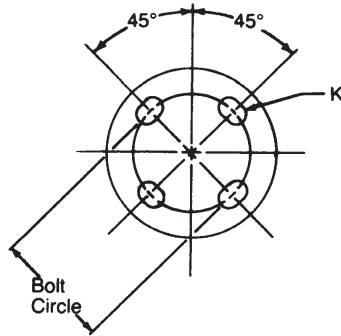


BUS SUPPORTS ALUMINUM WELDMENT TUBE TO INSULATOR

ALUMINUM
WUDE

Aluminum alloy, vertical weldment bus support for tubing. Cap screws are supplied for upright mounting.

Material: **Castings**—356-T6 aluminum alloy
Hardware—galvanized steel



Product Data & Conductor Size

CATALOG NUMBER	ALUMINUM CONDUCTOR SIZE IPS/EHIPS	BOLT CIRCLE DIA.	DIMENSIONS INCHES (MM)				APPROX. WT. EACH LBS. (KG)
			L	C	J	K	
WUDE123	1-1/4	3	2-7/8 (73.02)	1-7/8 (47.62)	1/2 (12.7)	9/16 x 3/4	1.6 (.72)
WUDE143	1-1/2	3	3-3/8 (85.72)	2-1/8 (53.98)	1/2 (12.7)	9/16 x 3/4	1.9 (.86)
WUDE203	2	3	4 (101.6)	2-1/4 (57.15)	1/2 (12.7)	9/16 x 3/4	2.1 (.95)
WUDE205	2	5	4 (101.6)	2-1/4 (57.15)	5/8 (15.88)	11/16 x 7/8	3.2 (1.45)
WUDE243	2-1/2	3	4-1/2 (115.4)	2-1/2 (63.5)	1/2 (12.7)	9/16 x 3/4	2.5 (1.13)
WUDE245	2-1/2	5	4-1/2 (115.4)	2-1/2 (63.5)	5/8 (15.88)	11/16 x 7/8	3.4 (1.54)
WUDE303	3	3	5 (127.0)	2-1/2 (63.5)	1/2 (12.7)	9/16 x 3/4	2.7 (1.22)
WUDE305	3	5	5 (127.0)	2-1/2 (63.5)	5/8 (15.88)	11/16 x 7/8	3.8 (1.72)
WUDE343	3-1/2	3	4-3/4 (120.65)	2-3/4 (69.85)	1/2 (12.7)	9/16 x 3/4	3.5 (1.59)
WUDE345	3-1/2	5	4-3/4 (120.65)	2-3/4 (69.85)	5/8 (15.88)	11/16 x 7/8	4.5 (2.04)
WUDE403	4	3	5 (127.0)	2-3/4 (69.85)	1/2 (12.7)	9/16 x 3/4	3.9 (1.77)
WUDE405	4	5	5 (127.0)	2-3/4 (69.85)	5/8 (15.88)	11/16 x 7/8	5.0 (2.27)
WUDE505	5	5	5-1/4 (133.35)	2-3/4 (69.85)	5/8 (15.88)	11/16 x 7/8	6.5 (2.95)

SD
23