

DBCT

DRY-TYPE BUSHING CURRENT TRANSFORMER

APPLICATION:

The internally mounted Dry-type BCT is designed to be mounted onto the high voltage bushing of a dead-tank power circuit breaker along the ground collar, protected by an external cover. It can also be installed inside a weather-tight cabinet or inside an MC switchgear compartment. When properly installed, the Dry-type BCT can be used on higher system voltage levels while maintaining its own mere 600 Volt class rating. Its simple construction provides a low leakage product with extremely high short circuit capabilities.

OFFERINGS:

- Inner diameter: 3.5" [89mm] to 36" [915mm]
- Outer diameter: 5" [127mm] to 40" [1016mm]
- Primary currents: 25 – 8,000 Amps
- Secondary current: 1 and 5 Amps typ, others available
- Frequency: 50 and 60 Hz
- Rating Factors: Up to 5.0 @ 55°C Ambient
- Relaying class: Up to C800 / 5P20-200VA standard, up to C1200 and higher as non-standard
- Metering class: 0.15S thru 2.4 / 0.2S thru 5.0
- Burdens: B0.1 thru B1.8 / 2.5 – 45 VA
- Available in a variety of winding arrangement, Single Ratio (SR), Dual Ratio (DR) or Multi Ratio (MR)
- NOTE: Sizes and accuracy class depend on current ratio

OPTIONS:

- Designs can be made to match existing CT characteristics.
- Primary currents greater than 8,000 Amps.
- Secondary terminals or leads.
- Gapped cores for remanence control and transient response.
- Air core linear couplers.



Scan the QR Code or visit
MeramecUSA.com
for more information.



hubbellpowersystems.com



For product inquiries, please contact your Hubbell sales representative or customer service at InstrumentTransformers@Hubbell.com or (573) 885-2521.

©2021 Hubbell Incorporated.
Because Hubbell has a policy of continuous product improvement,
we reserve the right to change design and specifications without notice.
Printed in the U.S.A. | SF_02_53E

OBCT

OIL-TYPE BUSHING CURRENT TRANSFORMER

APPLICATION:

The internally mounted Oil-type BCT is designed to be mounted onto a high voltage bushing shank along the ground collar, inside the tank of a power transformer, power circuit breaker or voltage regulator, that uses oil as the insulating medium. When properly installed, the Oil-type BCT can be used on higher system voltage levels while maintaining its own mere 600 Volt class rating. Its simple construction provides a low leakage product with extremely high short circuit capabilities.

OFFERINGS:

- Inner diameter: 3.5" [89mm] to 36" [915mm]
- Outer diameter: 5" [127mm] to 40" [1016mm]
- Primary currents: 25 – 8,000 Amps
- Secondary current: 1 & 5 Amps typ, others available
- Frequency: 50 and 60 Hz
- Rating Factors: Up to 2.0 @ 95°C Ambient
- Relaying class: Up to C800 / 5P20-200VA standard, up to C1200 and higher as non-standard.
- Metering class: 0.1S thru 2.4 / 0.2S thru 5.0
- Burdens: B0.1 thru B1.8 / 2.5 – 45 VA
- Available in a variety of winding arrangement, Single Ratio (SR), Dual Ratio (DR) or Multi Ratio (MR)
- NOTE: Sizes and accuracy class depend on current ratio

OPTIONS:

- Designs can be engineered to match existing CT characteristics.
- Primary currents greater than 8,000 Amps.
- Higher temperature class rating of 155°C.
- Gapped cores for remanence control and transient response.
- Air core linear couplers.



Scan the QR Code or visit
MeramecUSA.com
for more information.



hubbelpowersystems.com



For product inquiries, please contact your Hubbell sales representative or customer service at InstrumentTransformers@Hubbell.com or (573) 885-2521.

©2021 Hubbell Incorporated.
Because Hubbell has a policy of continuous product improvement,
we reserve the right to change design and specifications without notice.
Printed in the U.S.A. | SF_02_51E

SLIP-OVER BUSHING CURRENT TRANSFORMER

APPLICATION:

The outdoor mounted slip-over BCT is self contained and designed to be mounted externally over the high voltage terminal bushing of power transformers, power circuit breakers and cable terminators (potheads). In most cases the slip-over BCT, with its ease of installation, is a reliable and economical solution when upgrading system protection and adding additional metering points. When properly installed, the slip-over BCT can be used on higher system voltage levels while maintaining its own mere 600 Volt class rating. Its simple construction provides a low leakage product with virtually unlimited short circuit capabilities, far surpassing its stand alone wound-type counterpart.

OFFERINGS:

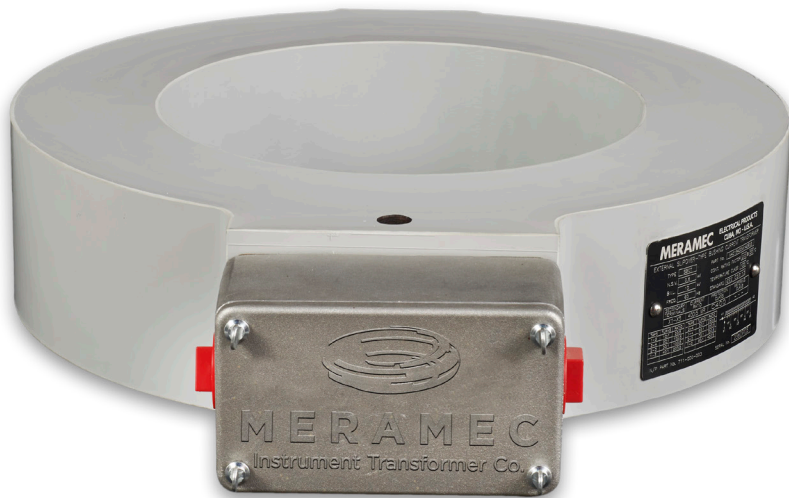
- Inner diameter: 4" [102mm] to 36" [915mm]
- Outer diameter: 10" [254mm] to 46" [1168mm]
- Primary currents: 25 – 8,000 Amps
- Secondary current: 1 and 5 Amps typ, others available.
- Frequency: 50 and 60 Hz
- Rating Factors: Up to 5.0 @ 30°C Ambient.
- Relaying class: Up to C800 / 5P20-200VA standard, up to C1200 and higher as non-standard.
- Metering class: 0.15S thru 2.4 / 0.2S thru 5.0
- Burdens: B0.1 thru B1.8 / 2.5 – 45 VA
- Available in a variety of winding arrangement, Single Ratio (SR), Dual Ratio (DR) or Multi Ratio (MR).
- NOTE: Sizes and accuracy class depend on current ratio.

OPTIONS:

- Dual-core configurations may be possible, same ratings or mixed, with 3kV isolation between coils.
- Other conduit openings are available - threaded up to 1.5" NPT or non-threaded holes up to 52mm.
- Designs can be engineered to match existing CT characteristics.
- Gapped cores for remanence control and transient response.
- Air core linear couplers.



Scan the QR Code or visit
MeramecUSA.com
for more information.



hubbelpowersystems.com



For product inquiries, please contact your Hubbell sales representative or customer service at InstrumentTransformers@Hubbell.com or (573) 885-2521.

©2021 Hubbell Incorporated.
Because Hubbell has a policy of continuous product improvement,
we reserve the right to change design and specifications without notice.
Printed in the U.S.A. | SF_02_55E

NEW

Rectangular Current Transformers

Now available for your revenue metering and general production needs in ground leakage and ground fault applications

Features and Benefits

- High accuracy and extended range capable
- Made of Meramec's proprietary high-grade material and epoxy encapsulated
- Domestically produced then fully tested, proven, and certified
- Built to specifications of Meramec's industry-leading 99.98% quality rating
- Rated for indoor service (0.72kV/10kV BIL)
- Custom-engineered units available



RELV-CT General Technical Data

Application	Relaying
Inner Diameter	13.38" x 44.25" [340 x 1124 mm]
Perimeter Dimensions	19.50" [495 mm] x 50.38" [1280 mm]
Depth	3.50" [89 mm]
Primary Currents	From 50 amps
Secondary Current	5/1 amps
Rated Frequency	60/50Hz
Standards*	IEEE C57.13/CSA 60044-1/IEC 61869
Basic Insulation Level	0.6kV, 10kV BIL
Approximate Weight	160 lbs

*Multiple accuracy classes available upon request

Catalog Info

Catalog Number	Ratio	Accuracy		
		Metering	Relaying	
Single-Ratio		CSA/IEEE	CSA/IEC	IEEE
RELV-500-1344	50:5			50:5



Learn more about Meramec.
Contact your Hubbell sales representative or visit
www.meramecusa.com

SPECIFIC APPLICATION SLIP-OVER CURRENT TRANSFORMER

APPLICATION:

The eSP is a special application version of our outdoor mounted slip-over BCT, developed specifically for the SP/SPS power circuit breaker. This circuit breaker is one of the most popular in its class up to 72kV and has been in existence since 1980 when it was first manufactured. We are offering this self contained model as a solution to add additional Current Transformers (CTs) when originally supplied with only one per pole, to change out older CTs for system upgrades or to replace aged and failing CTs when retiring the breaker is not an option.

CONSTRUCTION:

The toroidal core is continuously tape wound using cold rolled grain oriented electrical grade silicon steel, which receives a full stress relief anneal after it is wound to its specified dimensions. The secondary winding is then wound of insulated copper magnet wire over the insulated core with the turns equally spaced around the core periphery. When taps are pulled, they are wound in a manner that assures a fully distributed winding between any connections. The coil is then fully encapsulated in an ANSI 70 (sky grey) resin system that has been developed and tested for outdoor use. The potting compound is U.V. stabilized, is flexible to allow for expansions caused by temperature variations from -50°C to +65°C, has good chemical resistance, high dielectric strength, rugged physical properties to endure mechanical shock, and overall excellent weather resistance. The eSP is cast with aluminum mounting hubs which are used to transfer the mounting forces away from the potting compound, and are fixed to align with the existing bolt pattern.

OPTIONS:

- Other ratios and accuracies available
- Can be designed to IEC and CSA standards
- Can be designed for 50Hz power frequencies
- Conduit box can be supplied with hub sizes up to 1.5" NPT
- In some cases dual-core units may be possible

To learn more about these options, please consult factory with your requirements.



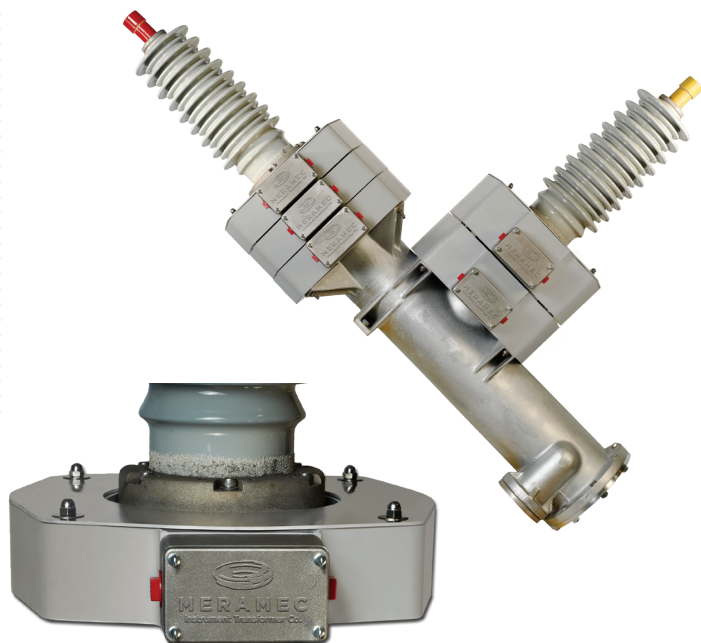
Scan the QR Code or visit
MeramecUSA.com
for more information.

INSTALLATION:

The eSP is custom designed to fit over the existing bushing (without removal) directly onto the interrupter frame, or onto an existing CT if present. Due to the angle at which the bushings are oriented, the CTs must be carefully lowered to avoid any damage. Typically, due to the height restriction, only two CTs can be mounted per pole. If replacing existing CTs, usually the same hardware can be used. If the new stack height exceeds the existing stack, or if adding an additional CT over an existing CT, then a hardware kit will be required. In some instances a third CT may be installed provided the stack height does not exceed the bushing flange height. The top most CT of the stack shall be covered with a custom fitted ground shield.

CONNECTIONS:

The primary polarity H1/P1 is identified on its surface by an embossed colored dot. The secondary terminals are 1/4-20 silicone bronze studs provided with hex nuts and cupped washers. Terminal identification is permanently embossed with dual designations "X" and "S" for compatibility in the global market. The X1/S1 terminal represents the instantaneous polarity reference with respect to H1/P1 and is identified by an embossed colored dot. A cast aluminum conduit box with (2) 1" NPT hubs and blanking plugs is provided with a removable cover.



hubbelpowersystems.com



For product inquiries, please contact your Hubbell sales representative or customer service at InstrumentTransformers@Hubbell.com or (573) 885-2521.

©2021 Hubbell Incorporated.
Because Hubbell has a policy of continuous product improvement,
we reserve the right to change design and specifications without notice.
Printed in the U.S.A. | SF_02_56E

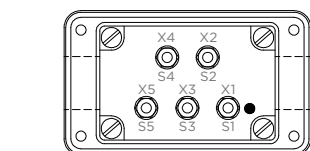
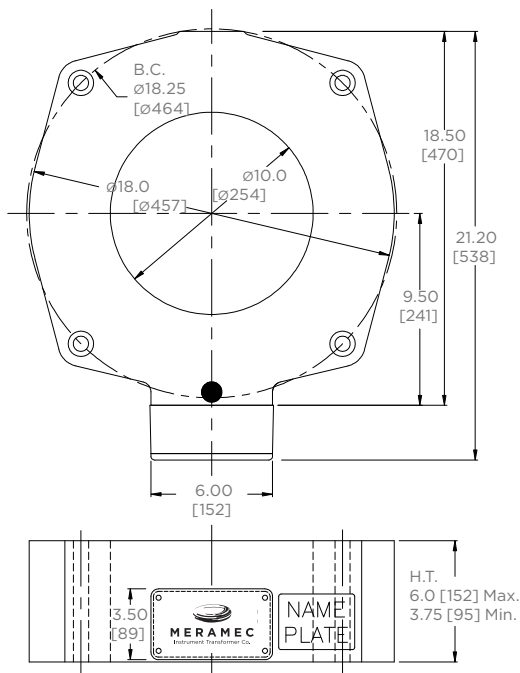
Current Ratio	Accuracy @ 60Hz	R.F. @30°C	FIN. HT inches	WEIGHT lbs	MERAMEC PART NO.	EQUIVALENT TO SIEMENS PART NO. **		
						2D51888	72-280-480-	72-281-598-
600:5 MR	C100	3.0	4.00	75	M6015100M1018SP	H10		
	C200		4.00*	100	M6015200M1018SP			
	C400 / 0.3B1.8		6.00	175	M6015409M1018SP	H64	051,095	012
1200:5 MR	C200 / 0.3B1.8	3.0	3.75	80	M1225209M1018SP	H07		057
	C400 / 0.3B1.8		4.25	110	M1225409M1018SP	H01, H63, H68	050	001, 035
	C800 / 0.3B1.8		6.00	180	M1225809M1018SP	H81	014, 039	005
2000:5 MR	C400 / 0.3B1.8	3.0	3.75	90	M2025409M1018SP	H05, H69, H72	033	003, 007, 084
	C800 / 0.3B1.8		5.50	140	M2025809M1018SP			
	C1200 (C800 @ 1200:5)		6.00	185	M2025129M1018SP			
3000:5 MR	C400 / 0.3B1.8	2.0	3.75*	65	M3025409M1018SP	H11	066	053
	C800 / 0.3B1.8		4.50	115	M3025809M1018SP			
	C1200 (C800 @ 2000:5)		5.75	145	M3025129M1018SP			
4000:5 MR	C800 / 0.3B1.8	2.0	4.00	95	M4025809M1018SP	H61, H73		023

* UNIT HAS 12" I.D.

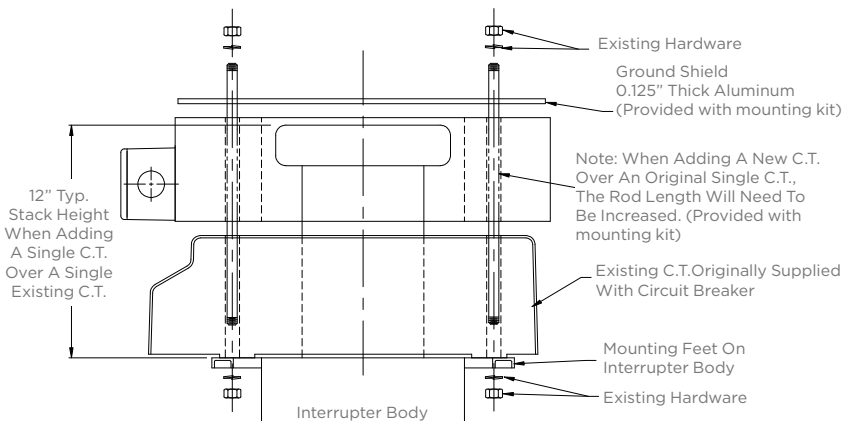
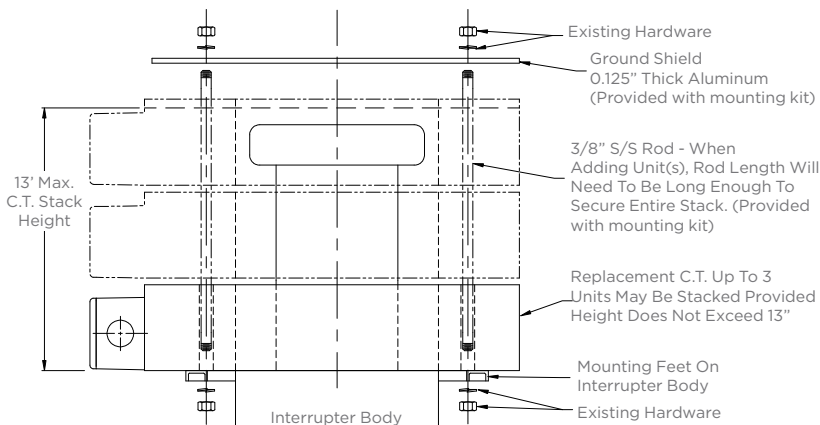
**PARTIAL CROSS-REFERENCE LIST, CONSULT FACTORY FOR OTHER RATINGS

APPLICATION NOTE:

The maximum CT stack height is based on the physical distance from the live portion at the top of the bushing to the closest ground plane, which may either be the bushing flange or CT ground shield, whichever is higher. There is adequate air space to satisfy Table 3 of IEEE Standard 1427 – IEEE Guide for Recommended Electrical Clearances and Insulation Levels in Air Insulated Electrical Power Substations, for 350kV BIL and lower.



View Inside Conduit Box W/Cover Removed



BOARD-MOUNTED BUSHING-TYPE GENERATOR CT

APPLICATION:

The Bushing-type Generator current transformer is designed to be mounted over the high voltage terminal bushing of power generators. The Bushing-type GCT may also be used on Isolated Phase Bus (IPB) on higher system voltage levels while maintaining its own mere 600 Volt class rating. Its simple construction provides a low leakage product with extremely high short circuit capabilities. Because of its open construction it can easily be designed to suit any custom mounting footprint and offers a lightweight alternative to bulky cast units. A major benefit this design offers is a quick turnaround during a forced emergency outage.

OFFERINGS:

- Insulation Class: 0.6kV / 10kV BIL / 155°C
- Inner diameter: 4" [102mm] to 36" [915mm]
- Outer diameter: 8" [203mm] to 48" [1220mm]
- Primary currents: up to 50,000 Amps
- Secondary current: 1 & 5 Amps typ, others available
- Frequency: 50 and 60 Hz
- Rating Factors: Up to 1.0 @ 55°C Ambient
- Temperature Rise: 75°C max. for 130°C total temperature
- Relaying class: Up to C800 (IEEE) / 5P20-200VA (IEC) standard. Higher ratings available, also transient classes TPS, TPX and TPY
- Metering class: 0.15S thru 0.6 (IEEE) / 0.2S thru 0.5 (IEC)
- Burdens: B0.1 thru B1.8 / 2.5 – 45 VA
- NOTE: Sizes and accuracy class are dependent on current ratio. Available in Single Ratio (SR) only

OPTIONS:

- Pre-assembled multi-core stacks available.
- Other conduit openings are available – threaded up to 1.5" NPT or non-threaded holes up to 52mm.
- Designs can be made to match existing CT characteristics.
- Gapped cores for remanence control and transient response.
- Windings may be provided with special test taps.
- Coils may be provided alone (no board) with terminals or flexible leads.



Scan the QR Code or visit
MeramecUSA.com
for more information.



hubbelpowersystems.com



For product inquiries, please contact your Hubbell sales representative or customer service at InstrumentTransformers@Hubbell.com or (573) 885-2521.

©2021 Hubbell Incorporated.
Because Hubbell has a policy of continuous product improvement,
we reserve the right to change design and specifications without notice.
Printed in the U.S.A. | SF_02_52E

EGCT

ENCAPSULATED BUSHING-TYPE GENERATOR CT

APPLICATION:

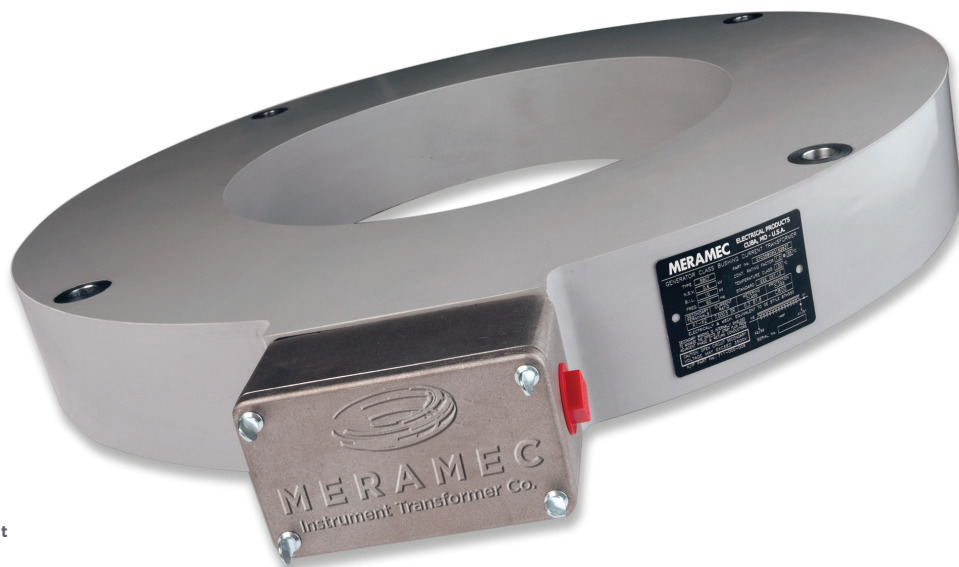
The Encapsulated Bushing-type Generator Current Transformer is designed to be mounted over the high voltage terminal bushing of power generators. When properly installed, the EGCT can be used in Isolated Phase Bus (IPB) enclosures on higher system voltage levels while maintaining its own mere 600 Volt class rating. Its simple construction provides a low leakage product with extremely high short circuit capabilities. Because the coil is totally encapsulated it is ideal for harsh and heavy duty environments.

OFFERINGS:

- Insulation Class: 0.6kV / 10kV BIL / 130°C
- Inner diameter: 6" [152mm] to 36" [915mm]
- Outer diameter: 10" [254mm] to 48" [1220mm]
- Primary currents: up to 50,000 Amps
- Secondary current: 1 and 5 Amps typ, others available
- Frequency: 50 and 60 Hz
- Rating Factors: Up to 1.0 @ 55°C Ambient
- Temperature Rise: 75°C max. for 130°C total temperature
- Relaying class: Up to C800 (IEEE) / 5P20-200VA (IEC) standard. Higher ratings available, also transient classes TPS, TPX & TPY
- Metering class: 0.15S thru 0.6 (IEEE) / 0.2S thru 0.5 (IEC)
- Burdens: B0.1 thru B1.8 / 2.5 – 45 VA
- NOTE: Sizes and accuracy class are dependent on current ratio. Available in Single Ratio (SR) only

OPTIONS:

- Other conduit openings are available – threaded up to 1.5" NPT or non-threaded holes up to 52mm.
- Designs can be made to match existing CT characteristics.
- Gapped cores for remanence control and transient response.
- Windings may be provided with special test taps.



Scan the QR Code or visit
MeramecUSA.com
for more information.



hubbellpowersystems.com



For product inquiries, please contact your Hubbell sales representative or customer service at InstrumentTransformers@Hubbell.com or (573) 885-2521.

©2021 Hubbell Incorporated.
Because Hubbell has a policy of continuous product improvement,
we reserve the right to change design and specifications without notice.
Printed in the U.S.A. | SF_02_54E

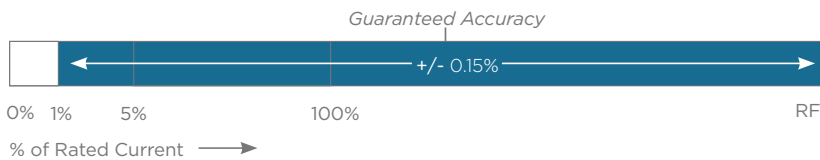
CRT-15E

MERAMEC® METERING CURRENT TRANSFORMERS

NEW FROM MERAMEC - LV METERING CTs FOR OUTDOOR AND INDOOR APPLICATIONS

HIGH ACCURACY, EXTENDED RANGE CLASS 0.15

+/- 0.15% accurate from 1% of Nameplate Rating to Rating Factor.



FEATURES AND BENEFITS

- **0.15 High Accuracy Class with Extended Range**
- **Every unit** is fully tested and compliant to IEEE 57.13 with certified test reports provided.
- Meramec's industry leading **99.98% quality rating**
- Large window, **indoor/outdoor** usage
- Typical excitation curves available upon request

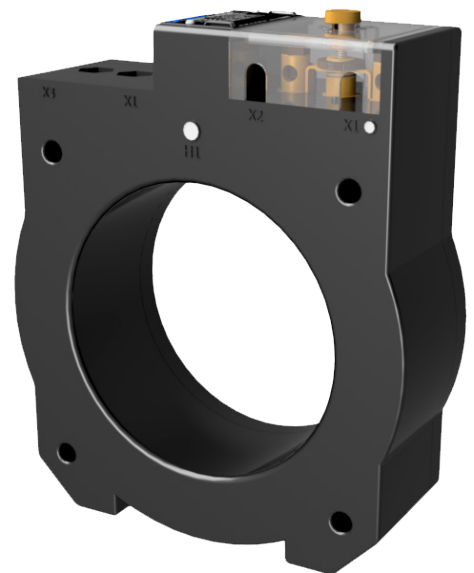
CRT-15E General Technical Data

APPLICATION	Metering, Outdoor/Indoor
INNER DIAMETER	5.5" [140 mm]
PERIMETER DIMENSIONS	8.25" [210 mm] W. x 9.84" (250 mm) H.
DEPTH	2.88" [73 mm]
PRIMARY CURRENTS	600-3000 amps
SECONDARY CURRENT	5 amps
RATED FREQUENCY	60Hz
METERING ACCURACY*	0.15 High Accuracy Class with Extended Range
BASIC INSULATION LEVEL	0.6kV, 10kV BIL full wave
MECHANICAL RATING	180x Rated Current
THERMAL RATING	80x Rated Current
APPROXIMATE WEIGHT	13 lbs [5.4 kg]

*CUSTOMIZABLE

Also available in IEC version

Reference document SF02061E for Optional accessories



Scan the QR code or visit
meramecusa.com
for more information



hubbelpowersystems.com

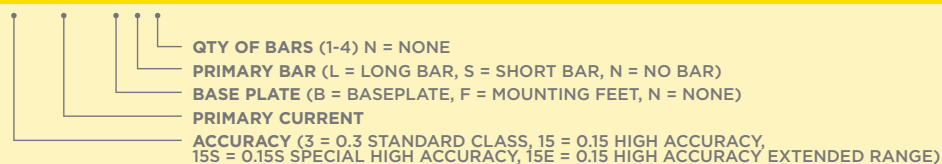


For product inquiries, please contact your local sales representative, customer service or email us at
www.MeramecUSA.com | InstrumentTransformers@Hubbell.com
573-885-2521

©2021 Hubbell Incorporated.
Because Hubbell has a policy of continuous product improvement,
we reserve the right to change design and specifications without notice.
Printed in the U.S.A. | SF_02_061E

SELECTION GUIDE

CRT-X-XXX-XXX



Single-Ratio	Ratio	Metering Accuracy							Cont. Thermal Rating Factor	
Catalog Number		E-0.04	E-0.2	B-0.1	B-0.2	B-0.5	B-0.9	B-1.8	20C Ambient	55C Ambient
CRT-15E-601-XXX	600:5	0.15E	0.15E	0.15E	0.15E	-	-	-	3.0	2.0
CRT-15E-801-XXX	800:5	0.15E	0.15E	0.15E	0.15E	0.15E	-	-	3.0	2.0
CRT-15E-122-XXX	1200:5	0.15E	0.15E	0.15E	0.15E	0.15E	0.15E	-	2.0	1.5
CRT-15E-152-XXX	1500:5	0.15E	0.15E	0.15E	0.15E	0.15E	0.15E	-	3.0	2.5
CRT-15E-202-XXX	2000:5	0.15E	0.15E	0.15E	0.15E	0.15E	0.15E	-	2.5	1.8
CRT-15E-302-XXX	3000:5	0.15E	0.15E	0.15E	0.15E	0.15E	0.15E	-	1.5	1.0

OPTIONAL ACCESSORIES		PRIMARY BAR KIT	BARS ARE .250" THICK BY 4" WIDE. WITH MULTI-BAR ASSEMBLIES, THERE IS .250" SPACING BETWEEN BARS. ASSEMBLY CAN BE MOUNTED WITH BARS HORIZONTAL OR VERTICAL.		
ACCESSORY	PART NUMBER	RATIO	11.88"	14.50"	
ONE-PIECE MOUNTING BASE	MTG-CRT-BS1	200:5-400:5A	1 BAR	PBK-CRT-S1	PBK-CRT-L1
MOUNTING FEET (SET OF 4 WITH HARDWARE)	MTG-CRT-FT4	200:5-400:5A	2 BARS	PBK-CRT-S2	PBK-CRT-L2
WINDOW PLATE (SINGLE-BAR)	WP-CRT-SB	1500:5-3000:5A	3 BARS	PBK-CRT-S3	PBK-CRT-L3
WINDOW PLATE (MULTI-BAR)	WP-CRT-MB	4000:5A	4 BARS	PBK-CRT-S4	PBK-CRT-L4



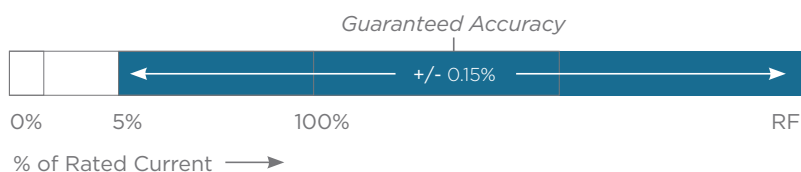
CRT-15S

MERAMEC[®] METERING CURRENT TRANSFORMERS

NEW FROM MERAMEC - LV METERING CTs FOR OUTDOOR AND INDOOR APPLICATIONS

HIGH ACCURACY CLASS 0.15S

+/- 0.15% accurate from 5% of Nameplate Rating to Rating Factor.



FEATURES AND BENEFITS

- **0.15S Special High Accuracy Class**
- **Every unit** is fully tested and compliant to IEEE 57.13 with certified test reports provided.
- Meramec's industry leading **99.98% quality rating**
- Large window, **indoor/outdoor** usage
- Typical excitation curves available upon request

CRT-15S General Technical Data

APPLICATION	Metering, Outdoor/Indoor
INNER DIAMETER	5.5" [140 mm]
PERIMETER DIMENSIONS	8.25" [210 mm] W. x 9.84" (250 mm) H.
DEPTH	2.88" [73 mm]
PRIMARY CURRENTS	600-3000 amps
SECONDARY CURRENT	5 amps
RATED FREQUENCY	60Hz
METERING ACCURACY*	0.15S Special High Accuracy Class
BASIC INSULATION LEVEL	0.6kV, 10kV BIL full wave
MECHANICAL RATING	180x Rated Current
THERMAL RATING	80x Rated Current
APPROXIMATE WEIGHT	13 lbs [5.4 kg]

*CUSTOMIZABLE

Also available in IEC version

Reference document SF02060E for Optional accessories



Scan the QR code or visit
meramecusa.com
for more information



hubbellpowersystems.com

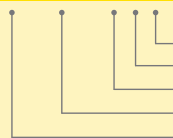


For product inquiries, please contact your local sales representative, customer service or email us at InstrumentTransformers@Hubbell.com

©2021 Hubbell Incorporated.
Because Hubbell has a policy of continuous product improvement,
we reserve the right to change design and specifications without notice.
Printed in the U.S.A. | SF_02_060E

SELECTION GUIDE

CRT-X-XXX-XXX



QTY OF BARS (1-4) N = NONE
 PRIMARY BAR (L = LONG BAR, S = SHORT BAR, N = NO BAR)
 BASE PLATE (B = BASEPLATE, F = MOUNTING FEET, N = NONE)
 PRIMARY CURRENT
 ACCURACY (3 = 0.3 STANDARD CLASS, 15 = 0.15 HIGH ACCURACY,
 15S = 0.15S SPECIAL HIGH ACCURACY, 15E = 0.15 HIGH ACCURACY EXTENDED RANGE)

Single-Ratio	Ratio	IEEE Metering Accuracy							Cont. Thermal Rating Factor	
Catalog Number		E-0.04	E-0.2	B-0.1	B-0.2	B-0.5	B-0.9	B-1.8	20C Ambient	55C Ambient
CRT-15S-601-XXX	600:5	0.15S	0.15S	0.15S	0.15S	-	-	-	3.0	2.0
CRT-15S-801-XXX	800:5	0.15S	0.15S	0.15S	0.15S	0.15S	-	-	3.0	2.0
CRT-15S-102-XXX	1000:5	0.15S	0.15S	0.15S	0.15S	0.15S	0.15S	-	2.0	1.5
CRT-15S-122-XXX	1200:5	0.15S	0.15S	0.15S	0.15S	0.15S	0.15S	-	2.0	1.5
CRT-15S-152-XXX	1500:5	0.15S	0.15S	0.15S	0.15S	0.15S	0.15S	-	3.0	2.5
CRT-15S-202-XXX	2000:5	0.15S	0.15S	0.15S	0.15S	0.15S	0.15S	-	2.5	1.75
CRT-15S-302-XXX	3000:5	0.15S	0.15S	0.15S	0.15S	0.15S	0.15S	-	1.5	1.0

OPTIONAL ACCESSORIES		PRIMARY BAR KIT	BARS ARE .250" THICK BY 4" WIDE. WITH MULTI-BAR ASSEMBLIES, THERE IS .250" SPACING BETWEEN BARS. ASSEMBLY CAN BE MOUNTED WITH BARS HORIZONTAL OR VERTICAL.		
ACCESSORY	PART NUMBER	RATIO	11.88"	14.50"	
ONE-PIECE MOUNTING BASE	MTG-CRT-BS1	200:5-400:5A	1 BAR	PBK-CRT-S1	PBK-CRT-L1
MOUNTING FEET (SET OF 4 WITH HARDWARE)	MTG-CRT-FT4	200:5-400:5A	2 BARS	PBK-CRT-S2	PBK-CRT-L2
WINDOW PLATE (SINGLE-BAR)	WP-CRT-SB	1500:5-3000:5A	3 BARS	PBK-CRT-S3	PBK-CRT-L3
WINDOW PLATE (MULTI-BAR)	WP-CRT-MB	4000:5A	4 BARS	PBK-CRT-S4	PBK-CRT-L4

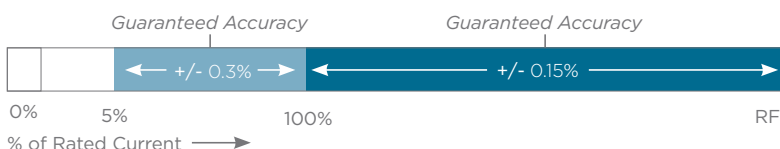


MERAMEC[®] METERING CURRENT TRANSFORMERS

NEW FROM MERAMEC - LV METERING CTs FOR OUTDOOR AND INDOOR APPLICATIONS

HIGH ACCURACY CLASS 0.15

+/- 0.15% accurate from Nameplate Rating to Rating Factor and +/- 0.3% accurate from below 100% Nameplate Rating to 5% of Nameplate Rating.



FEATURES AND BENEFITS

- **0.15 High Accuracy Class**
- **Every unit** is fully tested and compliant to IEEE 57.13 with certified test reports provided.
- Meramec's industry leading **99.98% quality rating**
- Large window, **indoor/outdoor** usage
- Typical excitation curves available upon request

CRT-15 General Technical Data

APPLICATION	Metering, Outdoor/Indoor
INNER DIAMETER	5.5" [140 mm]
PERIMETER DIMENSIONS	8.25" [210 mm] W. x 9.84" (250 mm) H.
DEPTH	2.88" [73 mm]
PRIMARY CURRENTS	600-4000 amps
SECONDARY CURRENT	5 amps
RATED FREQUENCY	60Hz
METERING ACCURACY*	0.15 High Accuracy Class
BASIC INSULATION LEVEL	0.6kV, 10kV BIL full wave
MECHANICAL RATING	180x Rated Current
THERMAL RATING	80x Rated Current
APPROXIMATE WEIGHT	13 lbs [5.4 kg]

*CUSTOMIZABLE

Also available in IEC version

Reference document SF02059E for Optional accessories



Scan the QR code or visit
meramecusa.com
for more information



hubbelpowersystems.com

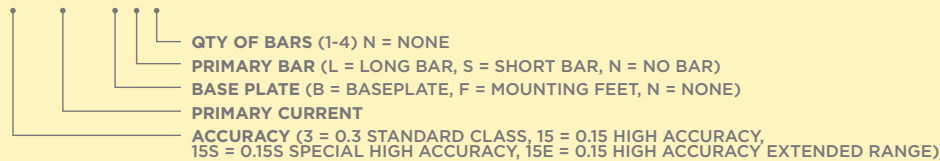


For product inquiries, please contact your local sales representative, customer service or email us at InstrumentTransformers@Hubbell.com

©2022 Hubbell Incorporated.
Because Hubbell has a policy of continuous product improvement, we reserve the right to change design and specifications without notice.
Printed in the U.S.A. | SF_02_059E REV 2/2022

SELECTION GUIDE

CRT-X-XXX-XXX



Single-Ratio	Ratio	IEEE Metering Accuracy							Cont. Thermal Rating Factor	
Catalog Number		E-0.04	E-0.2	B-0.1	B-0.2	B-0.5	B-0.9	B-1.8	20C Ambient	55C Ambient
CRT-15-601-XXX	600:5	0.15	0.15	0.15	0.15	-	-	-	3.0	2.0
CRT-15-801-XXX	800:5	0.15	0.15	0.15	0.15	0.15	-	-	3.0	2.0
CRT-15-102-XXX	1000:5	0.15	0.15	0.15	0.15	0.15	0.15	-	2.0	1.5
CRT-15-122-XXX	1200:5	0.15	0.15	0.15	0.15	0.15	0.15	0.15	2.0	1.5
CRT-15-152-XXX	1500:5	0.15	0.15	0.15	0.15	0.15	0.15	0.15	2.0	1.5
CRT-15-202-XXX	2000:5	0.15	0.15	0.15	0.15	0.15	0.15	0.15	2.0	1.5
CRT-15-302-XXX	3000:5	0.15	0.15	0.15	0.15	0.15	0.15	0.15	1.5	1.0
CRT-15-402-XXX	4000:5	0.15	0.15	0.15	0.15	0.15	0.15	0.15	1.5	1.0

OPTIONAL ACCESSORIES		PRIMARY BAR KIT	BARS ARE .250" THICK BY 4" WIDE. WITH MULTI-BAR ASSEMBLIES, THERE IS .250" SPACING BETWEEN BARS. ASSEMBLY CAN BE MOUNTED WITH BARS HORIZONTAL OR VERTICAL.		
ACCESSORY	PART NUMBER	RATIO	11.88"	14.50"	
ONE-PIECE MOUNTING BASE	MTG-CRT-BS1	200:5-400:5A	1 BAR	PBK-CRT-S1	PBK-CRT-L1
MOUNTING FEET (SET OF 4 WITH HARDWARE)	MTG-CRT-FT4	200:5-400:5A	2 BARS	PBK-CRT-S2	PBK-CRT-L2
WINDOW PLATE (SINGLE-BAR)	WP-CRT-SB	1500:5-3000:5A	3 BARS	PBK-CRT-S3	PBK-CRT-L3
WINDOW PLATE (MULTI-BAR)	WP-CRT-MB	4000:5A	4 BARS	PBK-CRT-S4	PBK-CRT-L4

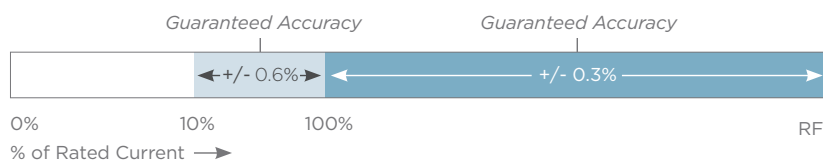


MERAMEC® METERING CURRENT TRANSFORMERS

NEW FROM MERAMEC - LV METERING CTs
FOR OUTDOOR AND INDOOR APPLICATIONS

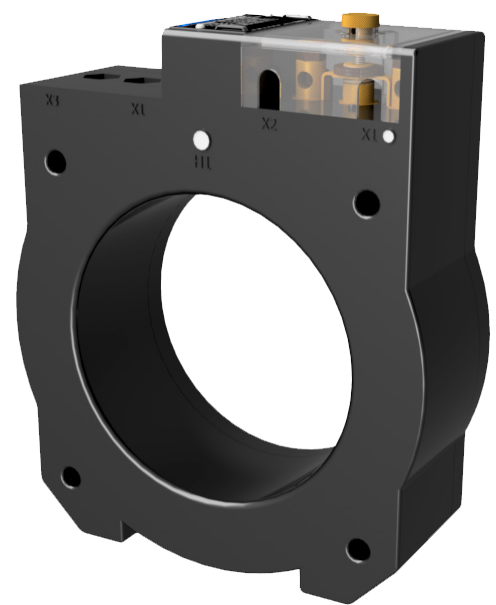
STANDARD ACCURACY CLASS 0.3

+/- 0.3% accurate from Nameplate Rating to Rating Factor and
+/- 0.6% accurate from below 100% Nameplate Rating to 10%
of Nameplate Rating.



FEATURES AND BENEFITS

- **0.3 Standard Accuracy Class**
- **Every unit** is fully tested and compliant to IEEE 57.13 with certified test reports provided.
- Meramec's industry leading **99.98% quality rating**
- Large window, **indoor/outdoor** usage
- Typical excitation curves available upon request



CRT-3 General Technical Data

APPLICATION	Metering, Outdoor/Indoor
INNER DIAMETER	5.5" [140 mm]
PERIMETER DIMENSIONS	8.25" [210 mm] W. x 9.84" (250 mm) H.
DEPTH	2.88" [73 mm]
PRIMARY CURRENTS	200-4000 amps
SECONDARY CURRENT	5 amps
RATED FREQUENCY	60Hz
METERING ACCURACY*	0.3 Standard Accuracy Class
BASIC INSULATION LEVEL	0.6kV, 10kV BIL full wave
MECHANICAL RATING	180x Rated Current
THERMAL RATING	80x Rated Current
APPROXIMATE WEIGHT	13 lbs [5.4 kg]

*CUSTOMIZABLE
Also available in IEC version
Reference document SF02044E for Optional accessories



Scan the QR code or visit
meramecusa.com
for more information



hubbelpowersystems.com



For product inquiries, please contact your local sales representative,
customer service or email us at InstrumentTransformers@Hubbell.com

©2022 Hubbell Incorporated.
Because Hubbell has a policy of continuous product improvement,
we reserve the right to change design and specifications without notice.
Printed in the U.S.A. | SF_02_044E REV 2/2022

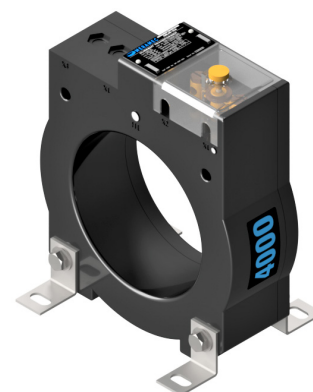
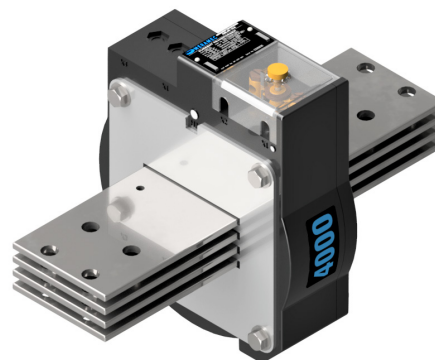
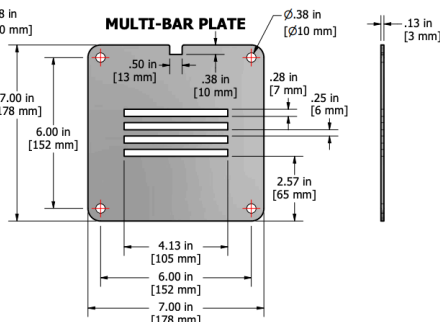
Single-Ratio	Ratio	IEEE Metering Accuracy					Cont. Thermal Rating Factor	
Catalog Number		B-0.1	B-0.2	B-0.5	B-0.9	B-1.8	20C Ambient	55C Ambient
CRT-3-201-XXX	200:5	0.6	1.2	-	-	-	4.0	3.0
CRT-3-301-XXX	300:5	0.3	0.6	1.2	-	-	4.0	3.0
CRT-3-401-XXX	400:5	0.3	0.3	0.6	1.2	-	4.0	3.0
CRT-3-501-XXX	500:5	0.3	0.3	0.3	0.6	-	4.0	3.0
CRT-3-601-XXX	600:5	0.3	0.3	0.3	0.6	1.2	3.0	2.0
CRT-3-801-XXX	800:5	0.3	0.3	0.3	0.3	0.6	3.0	2.0
CRT-3-102-XXX	1000:5	0.3	0.3	0.3	0.3	0.3	2.0	1.5
CRT-3-122-XXX	1200:5	0.3	0.3	0.3	0.3	0.3	2.0	1.5
CRT-3-152-XXX	1500:5	0.3	0.3	0.3	0.3	0.3	3.0	2.0
CRT-3-202-XXX	2000:5	0.3	0.3	0.3	0.3	0.3	2.0	1.5
CRT-3-252-XXX	2500:5	0.3	0.3	0.3	0.3	0.3	1.5	1.0
CRT-3-302-XXX	3000:5	0.3	0.3	0.3	0.3	0.3	1.5	1.0
CRT-3-402-XXX	4000:5	0.3	0.3	0.3	0.3	0.3	1.5	1.0

Dual-Ratio								
CRT-3-601122-XXX	600: 5	0.3	0.3	0.6	1.2	1.2	3.0	2.0
	1200:5	0.3	0.3	0.3	0.3	0.6	2.0	1.5
CRT-3-801162-XXX	800:5	0.3	0.3	0.3	0.6	0.6	3.0	2.0
	1600:5	0.3	0.3	0.3	0.3	0.3	2.0	1.5
CRT-3-102202-XXX	1000:5	0.3	0.3	0.3	0.3	0.6	3.0	2.0
	2000:5	0.3	0.3	0.3	0.3	0.3	2.0	1.5
CRT-3-152302-XXX	1500:5	0.3	0.3	0.3	0.3	0.6	2.0	1.5
	3000:5	0.3	0.3	0.3	0.3	0.3	1.5	1.0
CRT-3-202402-XXX	2000:5	0.3	0.3	0.3	0.3	0.3	2.0	1.5
	4000:5	0.3	0.3	0.3	0.3	0.3	1.5	1.0

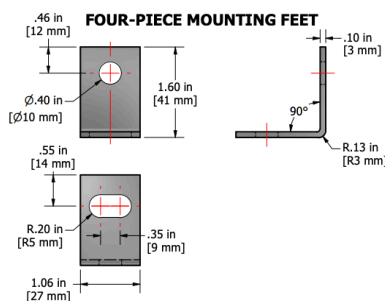
OPTIONAL ACCESSORIES		PRIMARY BAR KIT	BARS ARE .250" THICK BY 4" WIDE. WITH MULTI-BAR ASSEMBLIES, THERE IS .250" SPACING BETWEEN BARS. ASSEMBLY CAN BE MOUNTED WITH BARS HORIZONTAL OR VERTICAL.		
ACCESSORY	PART NUMBER	RATIO		11.88"	14.50"
ONE-PIECE MOUNTING BASE	MTG-CRT-BS1	200:5-400:5A	1 BAR	PBK-CRT-S1	PBK-CRT-L1
MOUNTING FEET (SET OF 4 WITH HARDWARE)	MTG-CRT-FT4	200:5-400:5A	2 BARS	PBK-CRT-S2	PBK-CRT-L2
WINDOW PLATE (SINGLE-BAR)	WP-CRT-SB	1500:5-3000:5A	3 BARS	PBK-CRT-S3	PBK-CRT-L3
WINDOW PLATE (MULTI-BAR)	WP-CRT-MB	4000:5A	4 BARS	PBK-CRT-S4	PBK-CRT-L4



MERAMEC® METERING CURRENT TRANSFORMERS ACCESSORIES



RATIO		11.88"	14.50"
200:5-400:5A	1 BAR	PBK-CRT-S1	PBK-CRT-L1
200:5-400:5A	2 BARS	PBK-CRT-S2	PBK-CRT-L2
1500:5-3000:5A	3 BARS	PBK-CRT-S3	PBK-CRT-L3
4000:5A	4 BARS	PBK-CRT-S4	PBK-CRT-L4



MERAMEC® VOLTAGE TRANSFORMERS

NEW FROM MERAMEC - LV VTS FOR INDOOR/OUTDOOR UTILITY APPLICATIONS

MODEL VTO-120

FEATURES AND BENEFITS

- **Every VT** is fully tested and compliant to IEEE 57.13 - Test card provided
- Meramec's industry leading **99.98% quality rating**
- We offer **ON-TIME** and **WHEN-NEEDED** delivery performance to drive down inventory needs
- **Custom-engineered** units available
- **Safety** terminal covers

VTO-120 General Technical Data

INSULATION CLASS	0.6kV, 10kV BIL. FULL WAVE
STANDARD SECONDARY VOLTAGE	120V
ACCURACY CLASS	0.3W, 0.6X @ 60Hz
RATED FREQUENCY	60Hz
THERMAL BURDEN RATING	300VA @ 30°C AMBIENT 200VA @ 55°C AMBIENT
APPROXIMATE NET WEIGHT	9.5 LBS [4.31 kg]

PRODUCT INFORMATION

1. Core & coil assembly is housed in a plastic case made from valox and filled with a polyurethane resin compound.
2. Terminals are 10-32 brass studs with one flat & lock washer between two regular nuts, provided with a removable & sealable plastic cover.
3. Nameplate is laser engraved aluminum, mounted on the to the transformer. Provision is made for attaching the user's identifying tag.
4. Also available in IEC version



Scan the QR code or visit
meramecusa.com
for more information

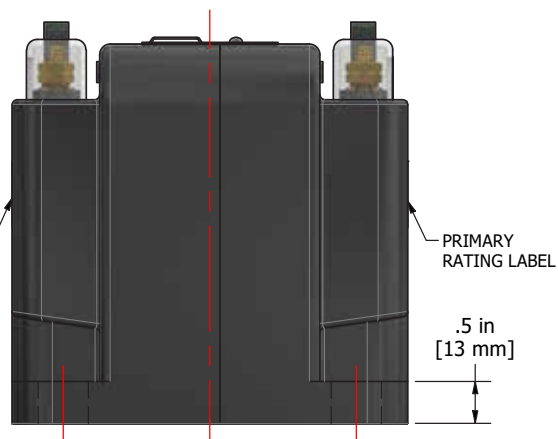
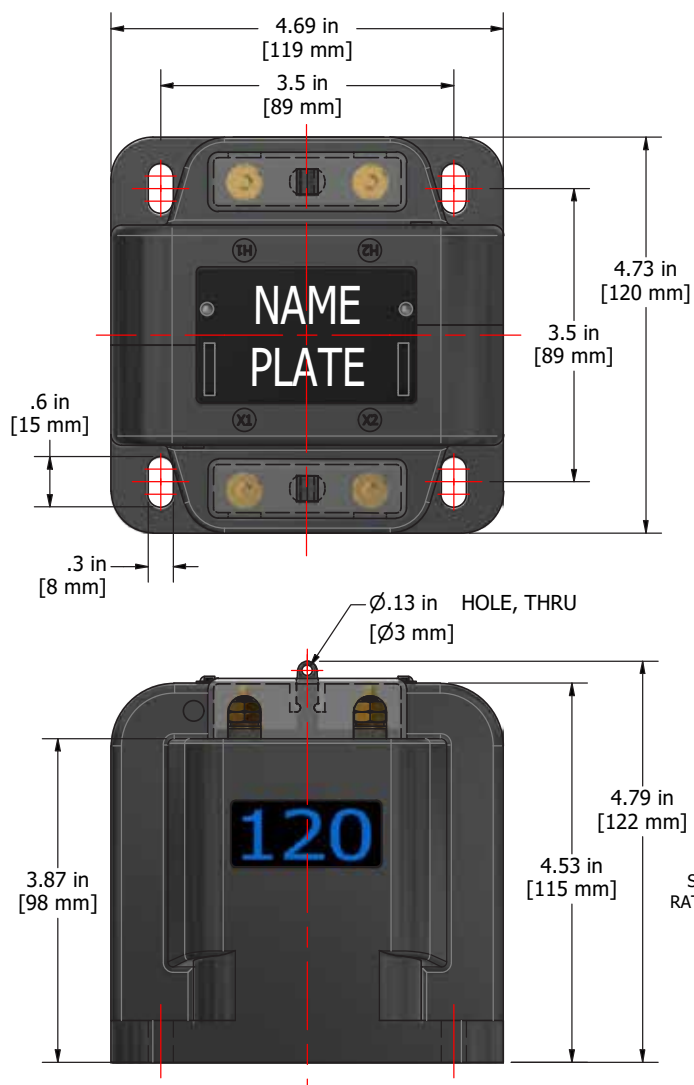


hubbelpowersystems.com



For product inquiries, please contact your local sales representative, customer service or email us at InstrumentTransformers@Hubbell.com

©2019 Hubbell Incorporated.
Because Hubbell has a policy of continuous product improvement, we reserve the right to change design and specifications without notice.
Printed in the U.S.A. | SF_02_046E



Model Information

MODEL #	VOLTAGE RATING	RATIO
VTO-120-120	120:120	1:1
VTO-120-240	240:120	2:1
VTO-120-288	288:120	2.4:1
VTO-120-300	300:120	2.5:1
VTO-120-480	480:120	4:1
VTO-120-600	600:120	5:1



hubbelpowersystems.com



For product inquiries, please contact your local sales representative, customer service or email us at InstrumentTransformers@Hubbell.com

©2019 Hubbell Incorporated.
Because Hubbell has a policy of continuous product improvement, we reserve the right to change design and specifications without notice.
Printed in the U.S.A. | SF_02_046E

MERAMEC® VOLTAGE TRANSFORMERS

NEW FROM MERAMEC - LV VTs
FOR SWITCHGEAR APPLICATIONS

MODEL VTI-460

FEATURES AND BENEFITS

- **Every VT** is fully tested and compliant to IEEE 57.13 - Test card provided
- Meramec's industry leading **99.98% quality rating**
- We offer **ON-TIME** and **WHEN-NEEDED** delivery performance to drive down inventory needs
- **Custom-engineered** units available
- **Safety** terminal covers

VTI-460 General Technical Data

INSULATION CLASS	0.6kV, 10kV BIL. FULL WAVE
STANDARD SECONDARY VOLTAGE	120V
ACCURACY CLASS	0.6W, 1.2X @60Hz
RATED FREQUENCY	60Hz
THERMAL BURDEN RATING	150VA @ 30°C AMBIENT 100VA @ 55°C AMBIENT
APPROXIMATE NET WEIGHT	7.8 LBS [3.54 kg]

PRODUCT INFORMATION

1. Core & coil assembly is housed in a plastic case and filled with a polyurethane resin compound.
2. Terminals are 10-32 brass studs with one flat and lock washer between two regular nuts, provided with a removable plastic cover.
3. These transformers are designed for line-to-line operation but may also be used line-to-ground or line-to-neutral configuration at 58% of rated voltage.
4. Also available in IEC version.



Scan the QR code or visit
meramecusa.com
for more information

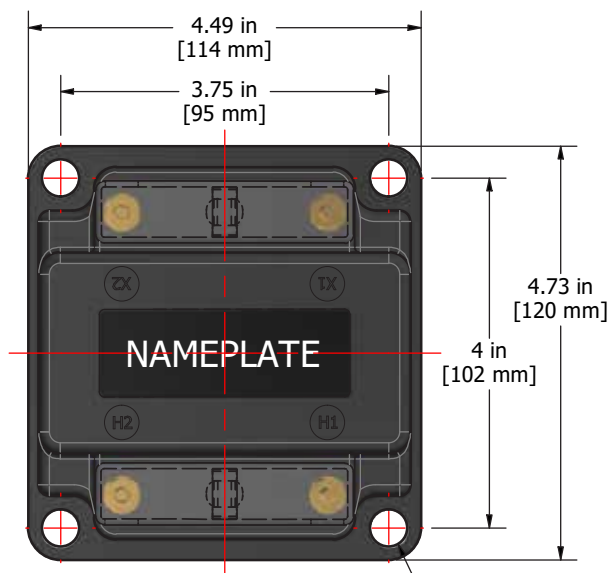


hubbelpowersystems.com

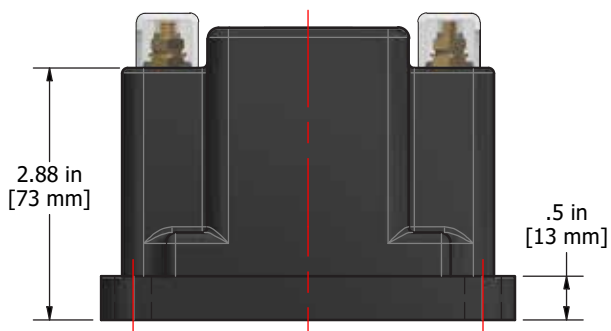
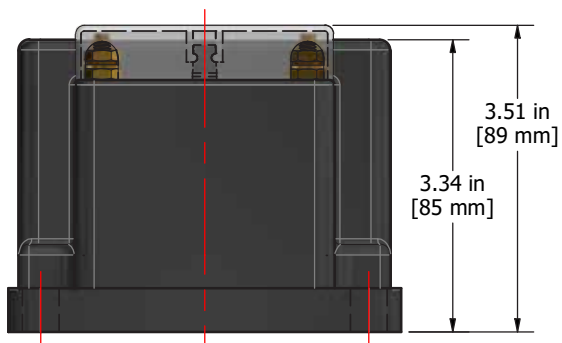


For product inquiries, please contact your local sales representative,
customer service or email us at InstrumentTransformers@hubbell.com

©2019 Hubbell Incorporated.
Because Hubbell has a policy of continuous product improvement,
we reserve the right to change design and specifications without notice.
Printed in the U.S.A. | SF_02_047E



(4) MOUNTING HOLES 0.42 in [11 mm] DIA.



MODEL #	VOLTAGE RATING	RATIO
VTI-460-069	69.3:120	0.58:1
VTI-460-120	120:120	1:1
VTI-460-208	208:120	1.73:1
VTI-460-240	240:120	2:1
VTI-460-277	277:120	2.31:1
VTI-460-288	288:120	2.4:1
VTI-460-300	300:120	2.5:1
VTI-460-346	346:120	2.88:1
VTI-460-480	(*)480:120	4:1
VTI-460-600	(*)600:120	5:1

WITH TWO EXCEPTIONS THESE TRANSFORMERS MEET ANSI C57.13 (GROUP 1). THOSE MARKED (*) ARE GROUP 2.



hubbelpowersystems.com



For product inquiries, please contact your local sales representative, customer service or email us at InstrumentTransformers@hubbell.com

©2019 Hubbell Incorporated.
Because Hubbell has a policy of continuous product improvement, we reserve the right to change design and specifications without notice.
Printed in the U.S.A. | SF_02_047E

MERAMEC[®] AUTOTRANSFORMERS

NEW FROM MERAMEC - LV AUTOTRANSFORMERS
FOR SWITCHGEAR APPLICATIONS

MODEL AVT-120

FEATURES AND BENEFITS

- **Every Autotransformer** is fully tested and compliant to IEEE 57.13 - Test Card provided
- Meramec's industry leading **99.98% quality rating**
- We offer **ON-TIME** and **WHEN-NEEDED** delivery performance to drive down inventory needs
- **Custom-engineered** units available
- **Safety** Terminal Covers

AVT-120 General Technical Data

INSULATION CLASS	0.6kV, 10kV BIL.
THERMAL BURDEN RATING	150VA @ 30°C AMBIENT

PRODUCT INFORMATION

1. Construction: core & coil assembly is housed in a plastic case and filled with a polyurethane resin compound, case color: black
2. Terminals are 10-32 brass studs. With one flat and lock washer between two regular nuts, provided with a removable plastic cover.
3. Fuse clip for type 3ag fuse with 5 amp fuse.
4. Also available in IEC version.



Scan the QR code or visit
meramecusa.com
for more information

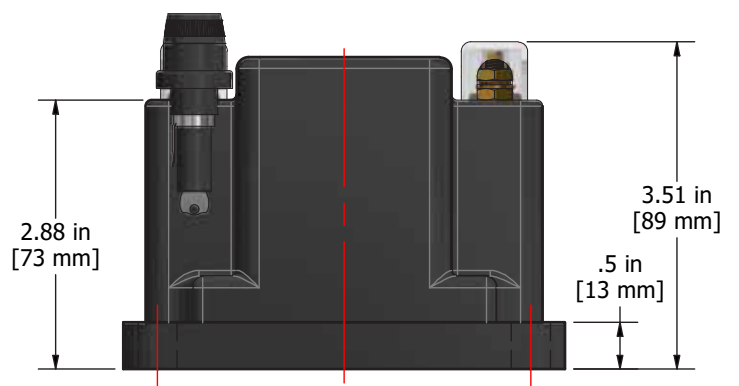
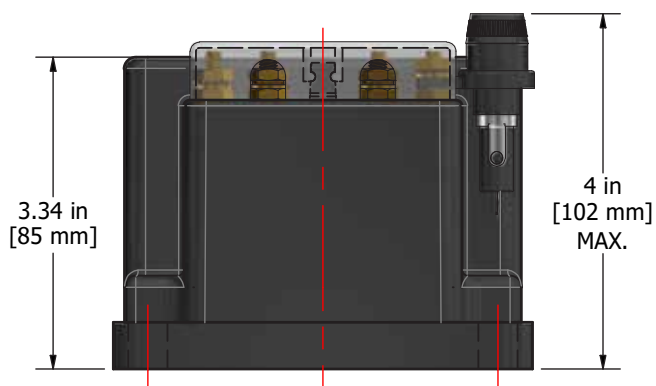
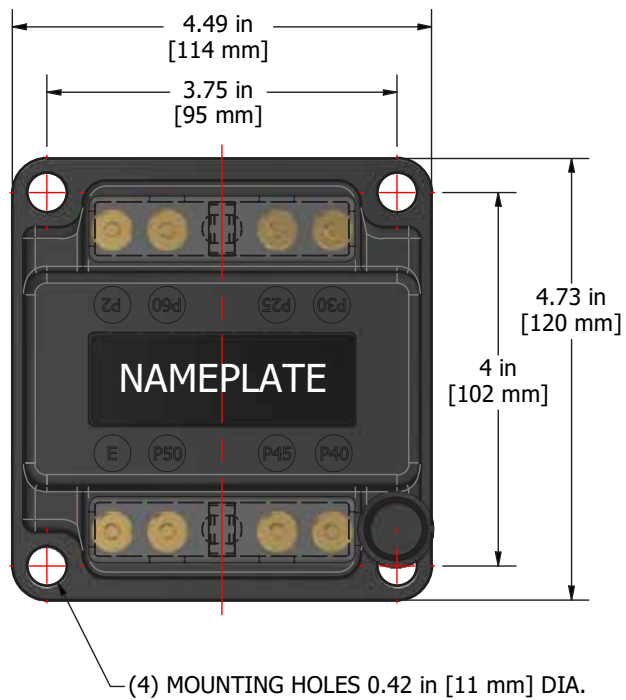


hubbellpowersystems.com



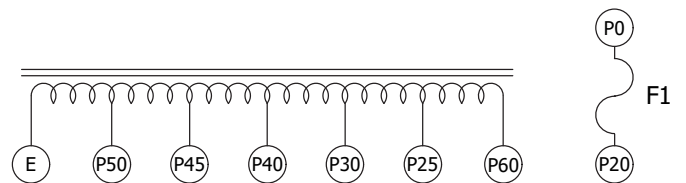
For product inquiries, please contact your local sales representative,
customer service or email us at InstrumentTransformers@hubbell.com

©2019 Hubbell Incorporated.
Because Hubbell has a policy of continuous product improvement,
we reserve the right to change design and specifications without notice.
Printed in the U.S.A. | SF_02_045E



Voltage Taps

Vinput (V)		Voutput (V)		Voutput/Vin Tolerances
E-P50	39.4	E-P60	127.5	± 0.0152
E-P45	62.5	E-P60	127.0	± 0.0096
E-P40	68.2	E-P60	125.1	± 0.0088
E-P30	78.75	E-P60	125.7	± 0.0077
E-P25	108.2	E-P60	125.8	± 0.0056



TERMINAL DIAGRAM



hubbelpowersystems.com



For product inquiries, please contact your local sales representative, customer service or email us at InstrumentTransformers@hubbell.com

©2019 Hubbell Incorporated.
Because Hubbell has a policy of continuous product improvement, we reserve the right to change design and specifications without notice.
Printed in the U.S.A. | SF_02_045E