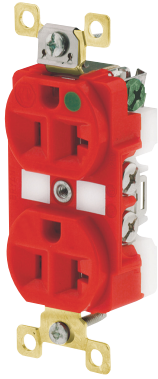


# Straight Blade Devices

## Hospital Grade • Self-Grounding Receptacles



- Heavy duty, copper-alloy self-grounding system (tin plated)
- Double-wipe, copper-alloy grounding contacts
- ID surface for marking identification of circuits
- Heavy duty, brass over nickel plated wrap-around steel yoke locked in for maximum strength and security

### Why Hospital Grade?

Bryant hospital grade receptacles are specifically designed to provide maximum safety and withstand severe abuse in hospitals and heavy duty industrial applications. The green dot • signifying UL hospital grade listing is more than just a symbol of compliance. It is your assurance that each device has passed the most stringent requirements for grounding reliability, security of assembly, strength and durability.

### 15A and 20A 125V and 20A 250V Receptacles

#### TECH-SPEC®



Wiring		Back and Side Wired			Stranded Wire Leads		Back and Side Wired	
Face		Duplex			Duplex		Single	
Rating	Color	Standard	Weather Resistant	Lighted Face	Tamper-Resistant	Standard	Weather Resistant	
NEMA 5-15, 15A 125V 	Brown	<b>BRY8200</b>	<b>BRY8200WR</b>	—	<b>BRY8200TR</b>	<b>8210</b>	<b>8210WR</b>	
	Gray	<b>BRY8200GRY</b>	<b>BRY8200GRYWR</b>	<b>BRY8200GRYL</b>	<b>BRY8200GTR</b>	<b>8210GRY</b>	<b>8210GRYWR</b>	
	Ivory	<b>BRY8200I</b>	<b>BRY8200IWR</b>	<b>BRY8200IIL</b>	<b>BRY8200ITR</b>	<b>8210I</b>	<b>8210IWR</b>	
	Red	<b>BRY8200RED</b>	<b>BRY8200REDWR</b>	<b>BRY8200REDL</b>	<b>BRY8200RTR</b>	<b>8210RED</b>	<b>8210REDWR</b>	
	White	<b>BRY8200W</b>	<b>BRY8200WWR</b>	<b>BRY8200WL</b>	<b>BRY8200WTR</b>	<b>8210W</b>	<b>8210WWR</b>	
Orange*	<b>BRY8200IG</b>	—	—	—	—	<b>8210IG</b>	—	
NEMA 5-20, 20A 125V 	Brown	<b>BRY8300</b>	<b>BRY8300WR</b>	—	<b>BRY8300TR</b>	<b>8310</b>	<b>8310WR</b>	
	Gray	<b>BRY8300GRY</b>	<b>BRY8300GRYWR</b>	<b>BRY8300GRYL</b>	<b>BRY8300GTR</b>	<b>8310GRY</b>	<b>8310GRYWR</b>	
	Ivory	<b>BRY8300I</b>	<b>BRY8300IWR</b>	<b>BRY8300IIL</b>	<b>BRY8300ITR</b>	<b>8310I</b>	<b>8310IWR</b>	
	Red	<b>BRY8300RED</b>	<b>BRY8300REDWR</b>	<b>BRY8300REDL</b>	<b>BRY8300RTR</b>	<b>8310RED</b>	<b>8310REDWR</b>	
	White	<b>BRY8300W</b>	<b>BRY8300WWR</b>	<b>BRY8300WL</b>	<b>BRY8300WTR</b>	<b>8310W</b>	<b>8310WWR</b>	
Orange*	<b>BRY8300IG</b>	—	—	—	—	<b>8310IG</b>	—	
NEMA 6-20, 20A 250V 	Brown	—	—	—	—	<b>8410BRN</b>	—	
	Gray	—	—	—	—	<b>8410GRY</b>	—	
	Ivory	—	—	—	—	<b>8410I</b>	—	
	Red	—	—	—	—	<b>8410RED</b>	—	
	White	—	—	—	—	<b>8410W</b>	—	
Orange*	—	—	—	—	<b>8410IG</b>	—		

Note: \*Orange is Isolated Ground. See Section C for isolated ground products.  
See page R-6 for tamper-resistant and weather resistant descriptions.  
See page A-28 for technical specifications.

### Product Dimensions Inches (mm)

	Duplex Standard, Weather Resistant and Lighted Face	Duplex, Tamper-Resistant	Single Standard and Weather Resistant
A	4.06" (103.1)	4.06" (103.1)	4.06" (103.1)
B	3.28" (83.3)	3.28" (83.3)	3.28" (83.3)
C	1.54" (39.1)	1.65" (41.9)	2.38" (60.5)
D	1.16" (29.5)	2.75" (69.9)	1.38" (35.1)
E	2.69" (68.3)	1.30" (33.0)	0.91" (23.1)
F	—	—	1.78" (45.2)

