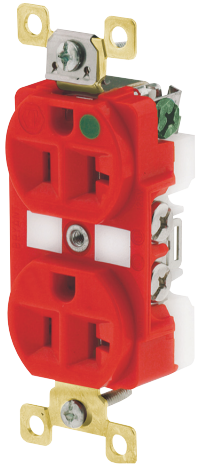


Heavy Duty Self-Grounding Receptacles



- Heavy duty, copper-alloy self-grounding system (tin plated)
- Double-wipe, copper-alloy grounding contacts
- ID surface for marking identification of circuits
- Heavy duty, brass over nickel plated wrap-around steel yoke locked in for maximum strength and security

Why Hospital Grade?

Bryant hospital grade receptacles are specifically designed to provide maximum safety and withstand severe abuse in hospitals and heavy duty industrial applications. The green dot • signifying UL hospital grade listing is more than just a symbol of compliance. It is your assurance that each device has passed the most stringent requirements for grounding reliability, security of assembly, strength and durability.

15A and 20A 125V and 20A 250V Receptacles

TECH-SPEC®



Wiring Face		Back and Side Wired Duplex			Stranded Wire Leads Duplex	Back and Side Wired Single	
Rating	Color	Standard	Weather Resistant	Lighted Face	Tamper-Resistant	Standard	Weather Resistant
NEMA 5-15, 15A 125V 	Brown	BRY8200	BRY8200WR	—	BRY8200TR	8210	8210WR
	Gray	BRY8200GRY	BRY8200GRYWR	BRY8200GRYL	BRY8200GTR	8210GRY	8210GRYWR
	Ivory	BRY8200I	BRY8200IWR	BRY8200IL	BRY8200ITR	8210I	8210IWR
	Red	BRY8200RED	BRY8200REDWR	BRY8200REDL	BRY8200RTR	8210RED	8210REDWR
	White	BRY8200W	BRY8200WWR	BRY8200WL	BRY8200WTR	8210W	8210WWR
Orange*		BRY8200IG	—	—	—	8210IG	—
NEMA 5-20, 20A 125V 	Brown	BRY8300	BRY8300WR	—	BRY8300TR	8310	8310WR
	Gray	BRY8300GRY	BRY8300GRYWR	BRY8300GRYL	BRY8300GTR	8310GRY	8310GRYWR
	Ivory	BRY8300I	BRY8300IWR	BRY8300IL	BRY8300ITR	8310I	8310IWR
	Red	BRY8300RED	BRY8300REDWR	BRY8300REDL	BRY8300RTR	8310RED	8310REDWR
	White	BRY8300W	BRY8300WWR	BRY8300WL	BRY8300WTR	8310W	8310WWR
Orange*		BRY8300IG	—	—	—	8310IG	—
NEMA 6-20, 20A 250V 	Brown	—	—	—	—	8410BRN	—
	Gray	—	—	—	—	8410GRY	—
	Ivory	—	—	—	—	8410I	—
	Red	—	—	—	—	8410RED	—
	White	—	—	—	—	8410W	—
Orange*	—	—	—	—	8410IG	—	

Note: *Orange is Isolated Ground. See Section C for isolated ground products.
See page R-6 for tamper-resistant and weather resistant descriptions.
See page A-28 for technical specifications.

Product Dimensions Inches (mm)

	Duplex Standard, Weather Resistant and Lighted Face	Duplex, Tamper-Resistant	Single Standard and Weather Resistant
A	4.06" (103.1)	4.06" (103.1)	4.06" (103.1)
B	3.28" (83.3)	3.28" (83.3)	3.28" (83.3)
C	1.54" (39.1)	1.65" (41.9)	2.38" (60.5)
D	1.16" (29.5)	2.75" (69.9)	1.38" (35.1)
E	2.69" (68.3)	1.30" (33.0)	0.91" (23.1)
F	—	—	1.78" (45.2)

