

Surge and Isolated Ground Devices

Portable Surge Protection Devices (SPD)



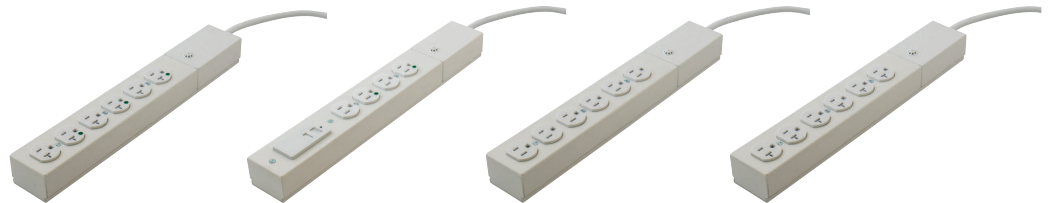
- Metallic and non-metallic units
- Six, seven and eight outlet units
- No surge, 350 joule, 1050 joule and 2100 joule protection units
- Transformer spaced outlets available on some units
- 15A resettable ON/OFF circuit breaker switch and power and ground indicating LEDs
- Available with fax/modem, cable TV and satellite protection on some units



- Hospital Grade ● Tamper-Resistant Receptacles with a Hospital Grade Plug
- Heavy Duty Metal Housing
- Available with a 2-Port USB Charging Outlet
- Tamper-Resistant Receptacles with a Heavy Duty Plug
- Heavy Duty Metal Housing

UL US
Listed to UL1449
and UL1363

Surge Protection Plug Strips



		SPD with Hospital Grade ● Tamper-Resistant Receptacles		SPD with Industrial Grade Tamper-Resistant Receptacles	
Number of Outlets		Six		Six	
Joule Rating				1100	
Peak AMP Rating				30 kA	
Down Line Warranty		\$2,500		\$10,000	\$25,000
Length		6 Foot	15 Foot	6 Foot	15 Foot
UL Type 3 SPD, Heavy Duty Metal Housing, White	15A	BRY6HG6	BRY6HG15	BRY6SS6	BRY6SS15
	20A	BRY6HG620	BRY6HG1520	BRY6SS620	BRY6SS1520
UL Type 3 SPD, Heavy Duty Metal Housing with 2-Port USB, White	15A	BRY6HGUSB6	—	—	—



	SPD		SPD with Fax/Modem	SPD with Fax/Modem/CATV/Satellite	Power Strip (No surge protection)
Number of Outlets	Six		Seven	Eight	Six
Joule Rating	350 (Non-Metallic) 1050 (Metallic)		1050	2100	N/A
Peak AMP Rating	6.5 kA (Non-Metallic) 19.5 kA (Metallic)		19.5 kA	39 kA	N/A
Down Line Warranty	\$2,500		\$10,000	\$25,000	N/A
Length	6 Foot	15 Foot	6 Foot	6 Foot	6 Foot
Non-Metallic, Office White	BRY6PS350	BRY6PS35015	BRY7PS1050M	BRY8PS2100D	BRY6PPS
Metallic, Office White	BRY6MPS1050	—	—	—	BRY6MPS

Note: See page D-8 for technical information on plug strips.

Product Dimensions Inches (mm)

	SPD and Power Strip	Non-Metallic Strips		Metallic Strips
		SPD with Fax Modem	SPD with Fax/Modem CATV/Satellite	SPD and Power Strip
A	11.2" (284.5)	14.75" (374.7)	10.4" (264.2)	12.25" (311.2)
B	2.36" (59.9)	2.36" (59.9)	3.8" (96.5)	2.5" (63.5)
C	1.85" (47.0)	1.85" (47.0)	1.44" (36.6)	1.5" (38.1)

