

Surge and Isolated Ground Devices

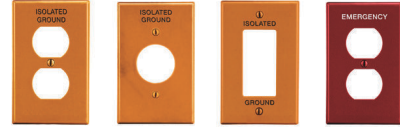


Isolated Ground Straight Blade Receptacles



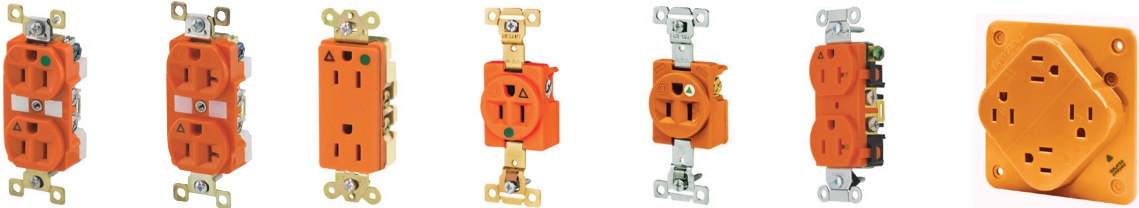
- Limits electrical noise on the equipment grounding circuit by providing two grounding paths for the installation
- Nylon deep face design
- Triple-wipe brass line contacts
- Ground contacts and ground termination
- Nickel and brass plated wrap-around steel yoke

Pre-Marked Wallplates

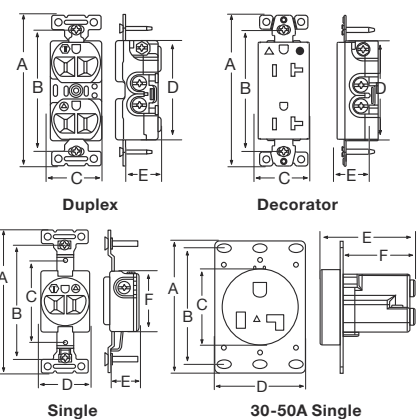


Opening	Color	"Isolated Ground"	"Emergency"
Duplex	Orange	P80IG	—
Duplex	Red	—	PJ8RMEV
Single receptacle	Orange	P70IG	—
Decorator type	Orange	P260IG	—
Locking 1.60" (40.6) ID	Orange	P720IG	—

Extra Heavy Duty Industrial, Hospital Grade and Specification Grade Receptacles

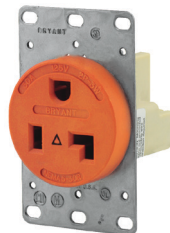


		Extra Heavy Duty					Specification Grade		
		Nylon Face					Nylon	Lexan®	
		Back and Side					Back and Side	Terminal Screws	Wire Leads
Style		Duplex		Decorator	Single		Duplex		
Rating	Color	Hospital Grade	Industrial Grade	Hospital Grade	Hospital Grade	Industrial Grade	Commercial Grade	QUADPLEX®	
NEMA 5-15, 15A 125V	Gray Ivory Orange Red White	— — BRY8200IG — —	BRY5262IGGRY BRY5262IGI BRY5262IG — BRY5262IGW	9200IGGRY 9200IGI 9200IG 9200IGRED 9200IGW	— — 8210IG — —	5261IGGRY 5261IGI 5261IG — 5261IGW	CR15IGRY CR15IGI CR15IG — CR15IGW	— — 1254IGO — —	— — — — —
NEMA 5-20, 20A 125V	Gray Ivory Lt. Almond Orange Red White	— — — BRY8300IG — —	BRY5362IGGRY BRY5362IGI — BRY5362IG — BRY5362IGW	9300IGGRY 9300IGI — 9300IG 9300IGRED 9300IGW	— — — 8310IG — —	5361IGGRY 5361IGI — 5361IG — 5361IGW	CR20IGRY CR20IGI CR20IGLA CR20IG — CR20IGW	— — — 21254IGO — —	— — — 21254IGOL — —
NEMA 6-15, 15A 250V	Orange	—	BRY5662IG	—	—	—	—	—	—
NEMA 6-20, 20A 250V	Orange	—	BRY5462IG	—	—	8410IG	—	—	—



30 and 50 Amp Straight Blade Receptacles

Rating	Color	RTP Nylon Face, 2-Pole 3-Wire		
NEMA 5-30, 30A 125V	Orange	9530IG	NEMA 6-30, 30A 250V	9630IG
NEMA 5-50, 50A 125V	Orange	9550IG	NEMA 6-50, 50A 250V	9650IG



Product Dimensions Inches (mm)

	Duplex	Decorator	Single 15/20A	30-50A
A	4.06" (103.1)	3.81" (96.8)	4.06" (103.1)	3.68" (93.5)
B	3.28" (83.3)	3.28" (83.3)	3.28" (83.3)	2.37" (60.3)
C	1.38" (35.1)	1.38" (35.1)	2.38" (60.5)	2.12" (54.0)
D	2.68" (68.1)	2.69" (68.3)	1.38" (35.1)	2.25" (57.2)
E	0.92" (23.4)	0.93" (23.6)	1.78" (45.2)	2.35" (59.9)
F	—	—	0.91" (23.1)	1.79" (45.6)

Lexan® is a registered trademark of Sabic Innovative Plastics.