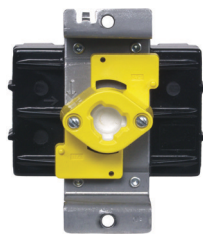




- Ideal motor controller suitable as a disconnect
- Rotary controllers can be built into equipment and enclosures for either box or panel-mount installation
- Provides high resistance to electrical arc tracking
- Thermoset body withstands high temperatures
- Superior dielectric strength
- #10 brass terminal screw and clamping plate for secure back or side wiring
- Optional side guard, for close wall applications and finger safe environments

Rotary AC Manual Motor Controllers/Disconnects



| Poles | HP Rating |         |         |         | 30A                 | 40A           | 60A           |
|-------|-----------|---------|---------|---------|---------------------|---------------|---------------|
|       | 120V AC   | 240V AC | 480V AC | 600V AC | Back and Side Wired | Side Wired    | Back Wired    |
| 2     | 2         | 5       | 10      | 15      | <b>66032D</b>       | <b>66042D</b> | —             |
| 3     | 3         | 7.5     | 15      | 20      | <b>66033D</b>       | <b>66043D</b> | —             |
| 2     | —         | 10      | 15      | 20      | —                   | —             | <b>66062D</b> |
| 3     | —         | 10      | 25      | 30      | —                   | —             | <b>66063D</b> |

Accessories



| Accessory      | Finger Guards                           | Handle Kit   | Weatherproofing Kit   | Auxiliary Contact  |
|----------------|---|--|---|--|
| Description    | For use with 30-50A switches (set of 2) | For rotary switch, includes handle, shaft, mounting brackets and required screws | For rotary switch, includes 4 seals, neoprene bushing and 3 "O" rings | NO/NC, includes 1 contact for use with push-on terminals |
| Catalog Number | <b>30003FG</b>                          | <b>6610MK</b>  | <b>664XWP</b>   | <b>660AC</b>   |

Product Dimensions Inches (mm)

|   | 66032D, 66033D, 66042D, 66043D with Handle Kit 6610MK | 66062D, 66063D with Handle Kit 6610MK |
|---|---|---------------------------------------|
| A | 3.78" (96.0)  | 3.78" (96.0)                          |
| B | 3.40" (86.4)  | 3.40" (86.4)                          |
| C | 3.09" (78.5)  | 3.56" (90.3)                          |
| D | 1.50" (38.1)  | 1.50" (38.1)                          |
| E | 1.56" R. (36.6 R.)                                    | 1.56" R. (36.6 R.)                    |
| F | 2.81" (71.4)  | 2.81" (71.4)                          |
| G | 2.44" (61.9)  | 2.96" (75.2)                          |
| H | —   | 2.31" (58.7)                          |

