

# Locking Devices

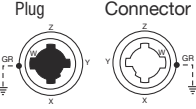
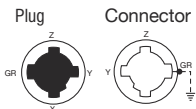
## 30 Amp Power Interrupting Devices



30A 600V AC and 250V DC, 3-Pole 4-Wire and 4-Pole 5-Wire Grounding Inches (mm)



Rating	Poles/ Wires	Cord Diameter	Description	Plug	Connector	Flanged Devices Cast Aluminum		Single Receptacle
						Male	Female	
30A 600V AC, 20A 250V DC	3-Pole	.700"-1.20"	Black nylon with cord grip	<b>21415</b>	<b>21414</b>	—	—	—
	4-Wire	(17.8-30.5)	For F.S. and F.D. boxes	—	—	<b>20418</b>	—	<b>20403</b>
			Cast aluminum angle housing with in. NPT hub	—	—	<b>21447</b>	<b>21420</b>	—
30A 600V AC, 20A 250V DC	4-Pole	.700"-1.20"	Black nylon with cord grip	<b>25415</b>	<b>25414</b>	—	—	—
	5-Wire	(17.8-30.5)	Metal housing for F.S. and F.D. boxes, Blue finish	—	—	—	—	<b>25403</b>
			Aluminum weather protective housing/cover for F.S. and F.D. boxes, Blue finish	—	—	—	—	<b>25250</b>

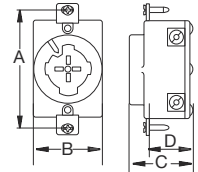
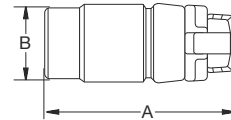
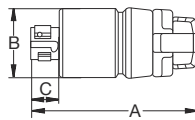


Note: See page H-27 for weather protective boots and accessories.

## Product Dimensions Inches (mm)

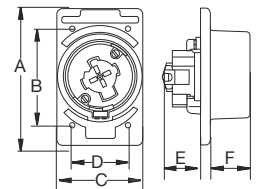
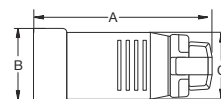
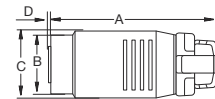
### 3-Pole 4-Wire Devices

	Plug	Connector	Single Receptacle
A	5.62" (142.7)	6.00" (152.4)	3.28" (83.3)
B	2.33" (59.2)	2.44" (62.0)	1.94" (49.3)
C	0.94" (23.9)	—	1.75" (44.5)
D	—	—	1.22" (31.0)



### 4-Pole 5-Wire Devices

	Plug	Connector	Single Receptacle
A	6.56" (166.6)	6.78" (172.2)	4.56" (115.8)
B	2.25" (57.2)	2.69" (68.3)	3.25" (82.6)
C	2.50" (63.5)	2.50" (63.5)	2.84" (72.1)
D	0.05" (1.3)	—	1.88" (47.8)
E	—	—	1.25" (31.8)
F	—	—	1.69" (42.9)



### Flanged Inlets

	Male	Angled Housing
A	4.56" (115.8)	5.94" (151.0)
B	3.25" (82.6)	3.25" (82.6)
C	2.84" (72.1)	5.09" (129.3)
D	1.88" (47.8)	1.50" (38.1)
E	2.41" (61.2)	2.19" (55.6)
F	1.81" (46.0)	3.25" (82.6)
G	—	3.06" (77.7)
H	—	2.25" (57.2)

