

# Lampholders, Starters and Adapters

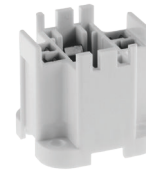
## Fluorescent Starters and Technical Information



### Fluorescent Starters, Standard Type



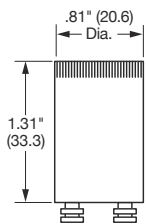
Catalog Number	FS2A	FS4A	FS5A	FS25A
Number of Pins	2	2	2	2
Lamp Watts	14, 15 and 20	13, 30 and 40	4, 6 and 8	25



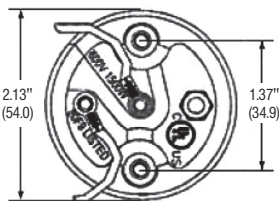
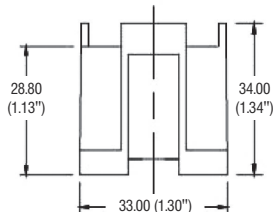
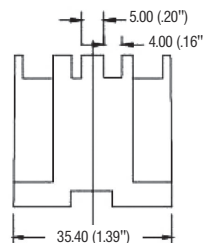
### Technical Information

Specification	Specification
Rating 1500W 600V Max, 5KV Pulse	Rating 26-32W lamp type, 75W 600V
<b>Mechanical</b>	<b>Mechanical</b>
Material Glazed porcelain body with ceramic arc shield Screw shell: Brass with nickel plate	Material High Strength Polycarbonate
<b>Terminal Accommodation</b>	<b>Terminal Accommodation</b>
Wire leads: #14 AWG SF-2 (SEW-2) 200°C, 600V glass braid, 12 inch long, stripped 1/8 inch wire. Mogul Base EX39 lampholder used with ANSI type "o" metal halide lamps, open-rated protected lamps, for use in open or enclosed luminaires. "EX" style exclusionary base designed specifically for operation with protected sockets.	Suitable as G24Q-3 or GX24Q4 type base, horizontal mount, screw down. Push-in wire terminals for #18 AWG solid or twist and tin stripped 7/16 inch wire. Maximum 6.5 inch lbs conductor insertion force. Wiring port accepts 2 wires for harness wiring.

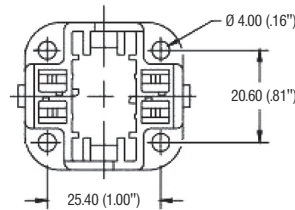
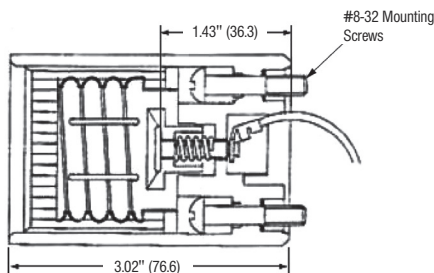
### Product Dimensions Inches (mm)



Fluorescent Starters



RL5221



RL426G24