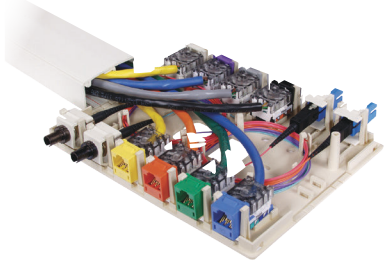
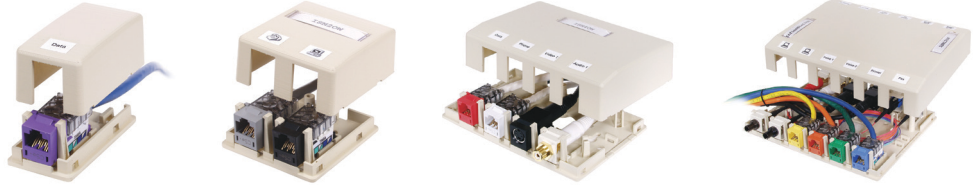


Network Wiring

Modular Connectors



- Low-profile design
- Accepts XJ jacks, audio video and fiber connectors
- Provided with double-sided tape and mounting screws for easy installation
- Constructed with a high-impact resistant, flame-retardant polymer



HISB Surface Mount Boxes

Color	1-Port	2-Port	4-Port	6-Port	12-Port
Black	HSB1BK	HSB2BK	HSB4BK	HSB6BK	HSB12BK
Ivory	HSB1EI	HSB2EI	HSB4EI	HSB6EI	HSB12EI
Gray	HSB1GY	HSB2GY	HSB4GY	HSB6GY	HSB12GY
Office White	HSB1OW	HSB2OW	HSB4OW	HSB6OW	HSB12OW
White	HSB1W	HSB2W	HSB4W	HSB6W	HSB12W



- The sliding cover provides protection and longer life
- Staggered, angled openings provide proper cable exit and bend radius
- Two methods to secure cover: screw, latch or both
- Indoor or NEMA 3R weatherproof grade



Secure-IT Plates, Tamper-Resistant

Color	Face Plate 1-Gang/4-Port	Cable-Thru Plate 1-Gang
Black	TPF1BK	TPCP1BK
Gray	TPF1GY	TPCP1GY
Office White	TPF1OW	TPCP1OW
White	TPF1W	TPCP1W

Secure-IT Plates, Weatherproof

Color	Face Plate 1-Gang/4-Port
Gray	TWPF1GY

Stainless Steel Wall Mount Phone Plates, Single Gang

Description	Color	Flush Jack	Recessed Jack
USOC jack, RJ25, 6-position	Gray	SPUF	SPUR
Category 5e jack, RJ45, 8-position	Gray	SP5EF	SP5ER
Category 6 jack, RJ45, 8-position	Gray	SP6F	SP6R
10 Gig jack, RJ45, 8-position	Gray	SP10GF	SP10GR