

Table of Contents

thermOweld® Exothermic Process.....	E-118	thermOweld® Accessories	
Making a thermOweld® Exothermic Connection.....	E-119	Cable Clamp.....	E-148
thermOweld® EZ Lite® Battery Ignition System.....	E-120	Cable Cleaning and Card Cloth Brush.....	E-148
thermOweld® Weld Metal and Steel Discs.....	E-121	Mold Cleaners.....	E-148
thermOweld® Molds		Packing Material.....	E-148
Type CC-1 Horizontal End to End.....	E-122	Tool Kit.....	E-149
Type CC-2 Horizontal Cable Tap to Horizontal Cable Run.....	E-123	Tools (separately).....	E-149
Type CC-4 Horizontal to Horizontal Cable Cross.....	E-124	Rasp.....	E-149
Type CC-11 Horizontal to Horizontal Cable Cross.....	E-125	Flint Ignitor.....	E-149
Type CC-6 Horizontal Parallel Tap.....	E-126	thermOweld® Ground Rod Driving Sleeves.....	E-150
Type CC-14 Horizontal Parallel Through Cables.....	E-126	thermOweld® Shim Stock and Adapter Sleeves.....	E-150
Type CC-7 Horizontal Parallel Through Cables.....	E-127	thermOweld® Cathodic Protection.....	E-151
Type CR-1 Horizontal Cable Terminal to Ground Rod.....	E-128		
Type CR-2 Horizontal Cable to Ground Rod.....	E-129		
Type CR-3 Horizontal Through Cable to Ground Rod.....	E-130		
Type CR-17 Horizontal Run and Tap Cables to Ground Rod.....	E-131		
Type CR-24 Horizontal Parallel Run Cables to Ground Rod.....	E-132		
Type CS-1 Horizontal Cable to Horizontal Steel Surface.....	E-133		
Type CS-8 Horizontal Cable to Horizontal Steel Surface.....	E-133		
Type CS-2 Horizontal Through Cable to Horizontal Steel Surface.....	E-134		
Type CS-9 Horizontal Through Cable to Horizontal Steel Surface.....	E-134		
Type CS-3 Angular Cable Drop to Vertical Steel Surface.....	E-135		
Type CS-23 Vertical Cable Drop to Vertical Steel Surface.....	E-136		
Type CS-4 Vertical Through Cable to Vertical Steel Surface.....	E-136		
Type CS-6 Horizontal Through Cable to Vertical Steel Surface.....	E-137		
Type CS-7 Overhead Vertical Tap Cable to Vertical Steel Surface.....	E-137		
Type CS-18 Horizontal Tap Cable to Vertical Steel Surface.....	E-138		
Type CS-5 Horizontal Cable Tap to Horizontal Cast Iron Surface.....	E-138		
Type CRE-1 Horizontal Parallel Tap to Rebar.....	E-139		
Type CRE-2 Horizontal Cable Tap to Horizontal Rebar Run.....	E-140		
Type CRE-3 Horizontal Through Cable to Vertical Rebar.....	E-141		
Type CRE-4 Horizontal Through Cable to Horizontal Rebar.....	E-142		
Type CRE-6 Horizontal Cable Tap to Vertical Rebar.....	E-143		
thermOweld® Contact - GF.....	E-144		
thermOweld® Handle Clamps.....	E-146		
thermOweld® Handle Attachment.....	E-146		
thermOweld® Mold Support Clamp.....	E-146		
thermOweld® Vertical Magnetic Clamps.....	E-147		
thermOweld® Horizontal and Vertical Chain Clamps.....	E-147		

Most frequently ordered catalog numbers are highlighted in BLUE

thermOweld® Exothermic Process

thermOweld® Exothermic Process

The thermOweld® connection process is a simple, efficient method of welding copper to copper or copper to steel. One advantage is that NO outside power is required when using the thermOweld® exothermic process. The thermOweld® process uses high temperature reaction of powdered copper oxide and aluminum. The reaction takes place in a semi-permanent graphite mold. These molds will last for fifty or more welds if proper care is given. The reaction takes place very rapidly, therefore the total amount of heat applied to the conductors or surfaces is considerably less than that of brazing or soldering. It is important to remember this when welding to insulated cable or thin wall pipe.

This system is very field friendly, since it is light and portable and requires no outside power source. It requires very little time or skill to obtain an efficient, maintenance free connection when using the thermOweld® process.

For more information, visit our website at:

www.burndy.com.

The thermOweld® process has been used to weld materials other than copper for electrical purposes. Materials welded include:

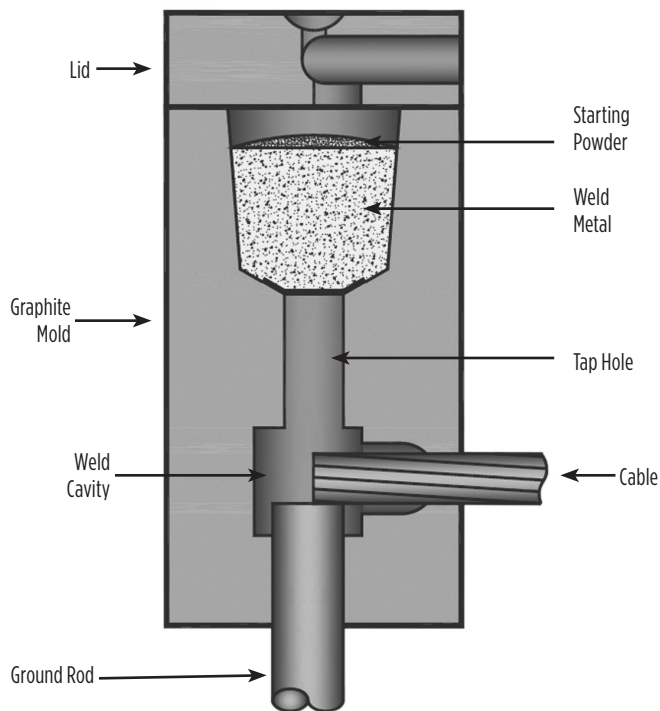
Stainless Steel
 Copperweld®
 Nichrome V
 Galvanized Steel
 Silicon Bronze
 Copper Clad Steel
 Columbium
 Plain Steel
 Everdur®
 Kama
 Stell Rail
 Cor-Ten®
 Brass
 Bronze
 Niobium
 Chromax
 Cast Iron
 Monel

When welding to galvanized steel it is recommended to resurface exposed bare steel.

The thermOweld® connection is a molecular weld. The weld metal has the same melting point as copper. These factors along with the increased cross section of the connection, thermOweld® connections:



1. Will not be affected by a high current surge. Tests have shown that the electrical conductor will melt before the thermOweld® connection when subjected to high short circuit current. Consult IEEE Standard 837-1989.
2. Will not loosen or corrode at the point of weld. There are no contact surfaces or mechanical pressures involved. A thermOweld® connection becomes an integral part of the conductor.
3. Have a current-carrying capacity equal to or greater than that of the conductors.



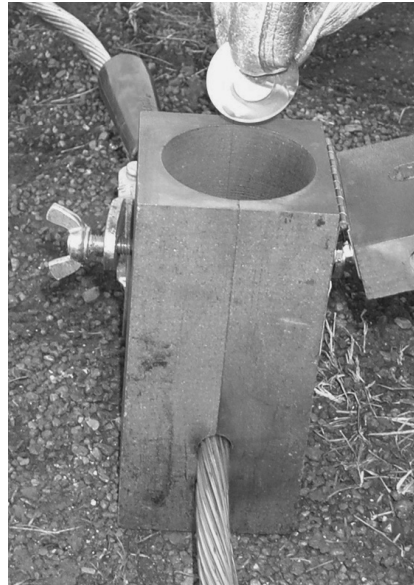
Making a thermOweld® Connection

Making a thermOweld® Connection



Step 1

Position cleaned conductors in mold after make sure mold is dry, by pre-heating or making a test joint.



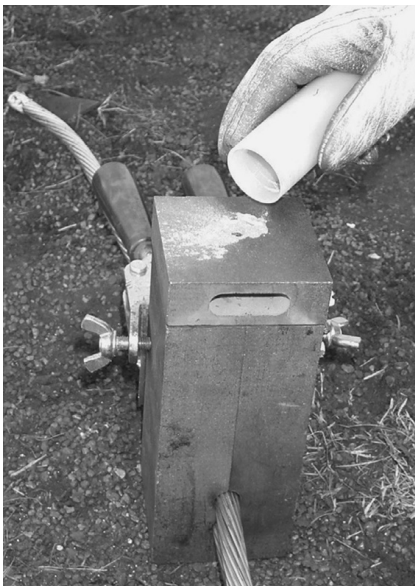
Step 2

Place metal disc in bottom of mold crucible.



Step 3

Dump powder into crucible, being careful not to loosen all the starting powder.



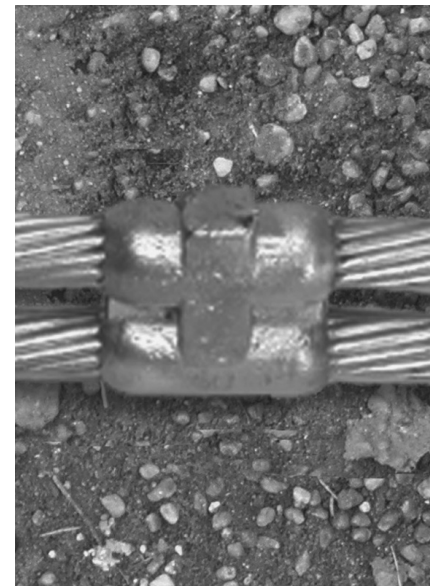
Step 4

Close lid and place a small amount of starting powder in the ignition pocket.



Step 5

Ignite the starting powder with the Flint Ignitor.



Step 6

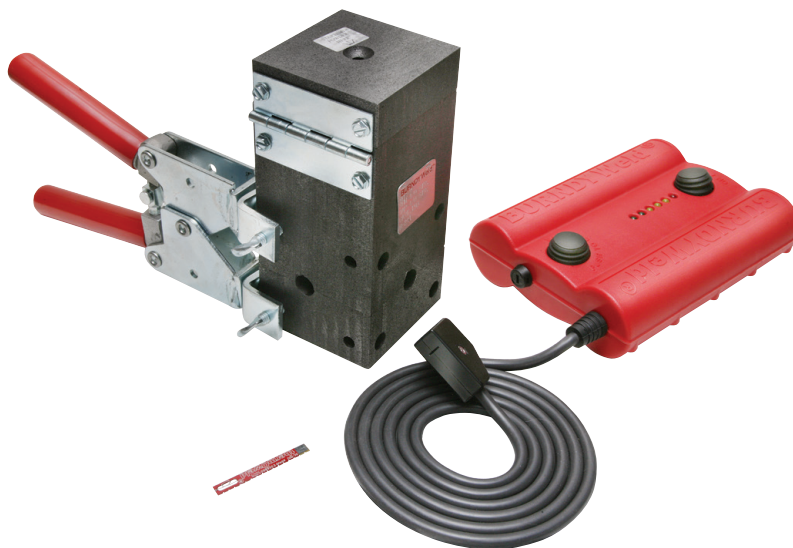
Wait 15 seconds, then remove weld and clean mold before making next connection.

thermOweld® QIKLITE® Battery Ignition System; Weld Metal

thermOweld® EZ Lite® Battery Ignition System

The self-contained unit offers a built-in battery life indicator, 6' ignitor cord and separate buttons for power and ignition. Also, no starting powder is used with this system so emissions are greatly reduced. EZ Lite® works with “off-the-shelf” molds and weld metal, so contractors and installers can continue to use the same quality thermOweld® products.

Since the unit operates with standard weld metal and molds, installers also have the option of using a traditional flint ignitor or the new EZ Lite® system. Another feature is the speed of ignition, with virtually no delay between depressing the “push to operate” button and ignition of the weld metal. This instant ignition feature offers quick reassurance to the installer, without the delay.



Features & Benefits

- The EZ Lite® system allows installers to make exothermic connections remotely
- Uses standard exothermic molds and weld metal
- Use the thermOweld® EZ Lite® battery ignition system or use a flint ignitor, making this the most versatile system available
- Installers have virtually 100% confidence that the connection can be completed with no wasted material or weld metal shots
- No starting material required which greatly reduces the amount of emissions generated
- Power is supplied by 4 standard “D” size batteries
- Built-in battery life indicator
- Virtually no delay in ignition after depressing the “push to operate” button
- Separate ON/OFF and Operate buttons
- Comes complete with durable 6 foot heat resistant cord
- Durable, long-lasting design
- EZ Lite® ignitor sticks (38EZLITIG) are conveniently packaged and available separately or packaged complete with standard weld metal

Catalog Number	Description
38EZLTRU	Battery Ignition System
38EZLTSK	EZ Lite® Battery Ignition System and 20 38EZLITIG Ignitor Sticks

Catalog Number Standard Cartridge Size with Ignitor	Cartridges/ Ignitors Per Box
TW15EZ	20
TW25EZ	20
TW32EZ	10
TW45EZ	20
TW65EZ	20
TW90EZ	10
TW115EZ	10
TW150EZ	10
TW200EZ	10
TW250EZ	10
TW500EZ	10
38EZLITIG*	10

* Ignitor stick only.

thermOweld® Weld Metal and Steel Discs

thermOweld® Weld Metal

thermOweld® Weld Metal is packed in moisture-resistant plastic cartridges that have tight fitting caps. These cartridges, along with the necessary steel discs, are then packed in boxes that are hermetically sealed. This ensures the powder arriving in good condition, always dry and ready for fast positive ignition. thermOweld® Weld Metal comes in several types; one for welding copper to copper, copper to steel, copper to cast iron and one for welding copper to steel for cathodic protection. The size and weight (in grams) of the cartridge are marked on each individual cartridge.

Weld metal and steel discs are sold only in standard box quantities.



Features & Benefits

- Packed in moisture-resistant plastic cartridges with tight fitting caps
- Cartridges, along with necessary steel discs, are packed in boxes that are hermetically sealed ensuring the powder arrives in good condition, dry and ready for fast, positive ignition

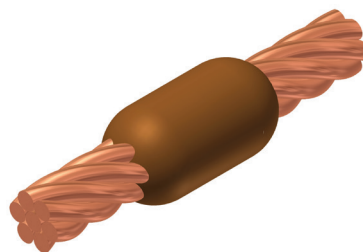
Weld Metal Size	Catalog Number Steel Discs Only	Package Quantity
15 to 65	37-0320-01	20
90 to 115	37-0320-02	10
150 to 500	37-0320-03	10

Catalog Number	Description	Cartridges Per Box
15	Standard Cartridge	20
25	Standard Cartridge	20
32	Standard Cartridge	10
45	Standard Cartridge	20
65	Standard Cartridge	20
90	Standard Cartridge	10
115	Standard Cartridge	10
150	Standard Cartridge	10
200	Standard Cartridge	10
250	Standard Cartridge	10
500	Standard Cartridge	10

Molds: Horizontal End to End

Type CC-1 Molds Horizontal End to End

Type CC-1 Molds are used for horizontal end to end cable connections. Size range from #6 through 1000 kcmil solid or concentric stranded copper conductors. Contact BURNDY® for information on molds for use with conductors not listed.



Cable		Mold Number	Price Key	Weld Metal	Handle Clamps
Run	Tap				
#4	#4	M-5623	18 ①	25	Incl.
#3	#3	M-5624	18 ①	32	Incl.
#2	#2	M-5625	18 ①	32	Incl.
#1	#1	M-5626	18 ①	32	Incl.
1/0	1/0	M-205	4	45	B-106
2/0	2/0	M-206	4	65	B-106
3/0	3/0	M-207	4	90	B-106
4/0	4/0	M-208	4	90	B-106
250 kcmil	250 kcmil	M-209	4	115	B-106
300 kcmil	300 kcmil	M-210	4	115	B-106
350 kcmil	350 kcmil	M-211	4	150	B-106
500 kcmil	500 kcmil	M-213	4	200	B-107
750 kcmil	750 kcmil	M-214	5	2-150	B-107
1000 kcmil	1000 kcmil	M-215	5	2-200	B-107

① 38-0309-00 Flint ignitor included

NOTES:

For sizes not listed, contact BURNDY®

Molds listed are for concentric stranded cable; add suffix "-S" to mold number for solid conductors

For heavy duty molds, molds with wear plates or molds for Copperweld® cable, contact BURNDY®

For expedited service, contact BURNDY®

Required Tools:

Handle Clamps - see chart for correct handle catalog number

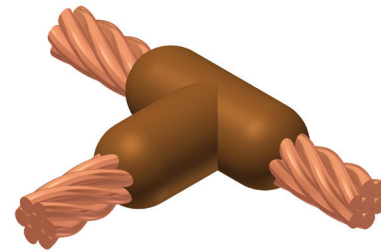
Recommended Accessories:

38-0309-00 Flint Ignitor
 38-3922-00 Mold Cleaning Brush
 38-0135-00 Cable Cleaning Brush
 38-0330-00 Cable Clamp

Molds: Horizontal Cable Tap to Horizontal Cable Run

Type CC-2 Molds Horizontal Cable Tap to Horizontal Cable Run

Type CC-2 Molds are used to join horizontal cable tap to a horizontal run cable. Size range is #6 through 750 kcmil solid or concentric stranded copper conductors. Contact BURNDY® for information on molds for conductors not listed below.



Cable		Mold Number	Price Key	Weld Metal	Handle Clamps
Run	Tap				
#4	#4	M-221	4	32	B-106
#2	#2	M-223	4	45	B-106
	#4	M-224	4	45	B-106
#1	#1	M-225	4	45	B-106
	#2	M-226	4	45	B-106
	#4	M-227	4	45	B-106
1/0	1/0	M-228	4	90	B-106
	#1	M-229	4	45	B-106
	#2	M-230	4	45	B-106
	#4	M-231	4	45	B-106
2/0	2/0	M-232	4	90	B-106
	1/0	M-333	4	90	B-106
	#1	M-234	4	45	B-106
	#2	M-235	4	45	B-106
	#4	M-5475	4	45	B-106
3/0	3/0	M-236	4	115	B-106
	2/0	M-237	4	90	B-106
	1/0	M-238	4	90	B-106
	#1	M-239	4	45	B-106
	#2	M-240	4	45	B-106
	#4	M-5574	4	45	B-106
4/0	4/0	M-241	4	150	B-106
	3/0	M-242	4	115	B-106
	2/0	M-243	4	90	B-106
	1/0	M-244	4	90	B-106
	#1	M-245	4	90	B-106
	#2	M-246	4	90	B-106
	#4	M-5021	4	90	B-106
	#4	M-5021	4	90	B-106
250 kcmil	250 kcmil	M-247	4	150	B-106
	4/0	M-248	4	150	B-106
	3/0	M-249	4	150	B-106
	2/0	M-250	4	90	B-106
	1/0	M-251	4	90	B-106
	#1	M-252	4	90	B-106
	#2	M-253	4	90	B-106
	#2	M-253	4	90	B-106

Cable		Mold Number	Price Key	Weld Metal	Handle Clamps	
Run	Tap					
300 kcmil	300 kcmil	M-254	4	200	B-106	
	250 kcmil	M-255	4	150	B-106	
	4/0	M-256	4	150	B-106	
	3/0	M-257	4	150	B-106	
	2/0	M-258	4	90	B-106	
	1/0	M-259	4	90	B-106	
	#1	M-260	4	90	B-106	
	#2	M-261	4	90	B-106	
	350 kcmil	350 kcmil	M-262	4	200	B-106
		300 kcmil	M-263	4	200	B-106
250 kcmil		M-264	4	200	B-106	
4/0		M-265	4	150	B-106	
3/0		M-266	4	150	B-106	
2/0		M-267	4	90	B-106	
1/0		M-268	4	90	B-106	
#1		M-269	4	90	B-106	
#2		M-270	4	90	B-106	
500 kcmil		500 kcmil	M-280	4	2-150	B-106
	350 kcmil	M-282	4	200	B-106	
	300 kcmil	M-283	4	200	B-106	
	250 kcmil	M-284	4	200	B-106	
	4/0	M-285	4	150	B-106	
	2/0	M-286	4	90	B-106	
	1/0	M-287	4	90	B-106	
	#1	M-288	4	90	B-106	
	#2	M-289	4	90	B-106	
	750 kcmil	750 kcmil	M-290	5	500	B-107
500 kcmil		M-291	5	2-200	B-107	
350 kcmil		M-293	4	250	B-106	
300 kcmil		M-294	4	200	B-106	
250 kcmil		M-295	4	200	B-106	
4/0		M-296	4	150	B-106	
2/0		M-297	4	150	B-106	
1/0		M-298	4	150	B-106	
1/0		M-298	4	150	B-106	

NOTES:

For sizes not listed, contact BURNDY®
 Molds listed are for concentric stranded cable; add suffix "-S" to mold number for solid conductors
 For heavy duty molds, molds with wear plates or molds for Copperweld® cable, contact BURNDY®
 For expedited service, contact BURNDY®

Required Tools:

Handle Clamps - see chart for correct handle catalog number

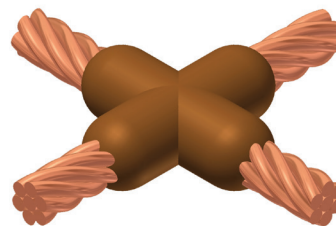
Recommended Accessories:

- 38-0309-00 Flint Ignitor;
- 38-3922-00 Mold Cleaning Brush;
- 38-0135-00 Cable Cleaning Brush;
- 38-0330-00 Cable Clamp

Molds: Horizontal to Horizontal Cable Cross

Type CC-4 Molds Horizontal to Horizontal Cable Cross

Type CC-4 Molds are used to join two horizontal cables at right angles. One cable is cut and the other is a through run. Size range is #6 through 500 kcmil solid or concentric stranded copper conductors. Contact BURNDY® for information on molds for conductors not listed below.



Cable		Mold Number	Price Key	Weld Metal	Handle Clamps
Run	Tap				
#4	#4	M-423	4	45	B-106
#3	#3	M-424	4	45	B-106
#2	#2	M-425	4	65	B-106
	#4	M-426	4	65	B-106
#1	#1	M-427	4	65	B-106
	#2	M-428	4	65	B-106
	#4	M-429	4	65	B-106
1/0	1/0	M-430	4	90	B-106
	#1	M-431	4	90	B-106
	#2	M-432	4	90	B-106
	#4	M-433	4	90	B-106
2/0	2/0	M-434	4	115	B-106
	1/0	M-435	4	115	B-106
	#1	M-436	4	115	B-106
	#2	M-437	4	115	B-106
3/0	3/0	M-438	4	150	B-106
	2/0	M-439	4	150	B-106
	1/0	M-440	4	115	B-106
	#1	M-441	4	115	B-106
	#2	M-442	4	115	B-106
4/0	4/0	M-443	4	200	B-106
	3/0	M-444	4	200	B-106
	2/0	M-445	4	150	B-106
	1/0	M-446	4	150	B-106
	#1	M-447	4	115	B-106
	#2	M-448	4	115	B-106
	#4	M-449	4	115	B-106
250 kcmil	250 kcmil	M-449	4	200	B-106
	4/0	M-450	4	200	B-106
	3/0	M-451	4	200	B-106
	2/0	M-452	4	150	B-106
250 kcmil	1/0	M-453	4	150	B-106
	#1	M-454	4	115	B-106
	#2	M-455	4	115	B-106

Cable		Mold Number	Price Key	Weld Metal	Handle Clamps
Run	Tap				
300 kcmil	300 kcmil	M-456	4	250	B-106
	250 kcmil	M-457	4	250	B-106
	4/0	M-458	4	200	B-106
	3/0	M-459	4	200	B-106
	2/0	M-460	4	150	B-106
	1/0	M-461	4	150	B-106
	#1	M-462	4	115	B-106
	#2	M-463	4	115	B-106
350 kcmil	350 kcmil	M-464	4	250	B-106
	300 kcmil	M-465	4	250	B-106
	250 kcmil	M-466	4	250	B-106
	4/0	M-467	4	200	B-106
	3/0	M-468	4	200	B-106
	2/0	M-469	4	200	B-106
	1/0	M-470	4	200	B-106
	#1	M-471	4	150	B-106
	#2	M-472	4	150	B-106
	500 kcmil	500 kcmil	M-483	5	500
350 kcmil		M-485	5	2-200	B-107
300 kcmil		M-486	5	2-200	B-107
250 kcmil		M-487	5	2-150	B-107
4/0		M-488	5	2-150	B-107
3/0		M-489	5	2-150	B-107
2/0		M-490	4	250	B-106
1/0		M-491	4	250	B-106
#1		M-492	4	200	B-106
#2		M-493	4	200	B-106

NOTES:
 For sizes not listed, contact BURNDY®
 Molds listed are for concentric stranded cable; add suffix "-S" to mold number for solid conductors
 For heavy duty molds, molds with wear plates or molds for Copperweld® cable, contact BURNDY®
 For expedited service, contact BURNDY®

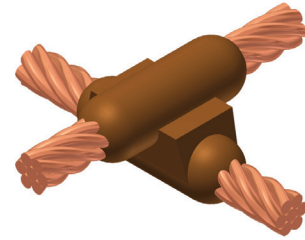
Required Tools:
 Handle Clamps - see chart for correct handle catalog number

Recommended Accessories:
38-0309-00 Flint Ignitor;
38-3922-00 Mold Cleaning Brush;
38-0135-00 Cable Cleaning Brush;
38-0330-00 Cable Clamp

Molds: Horizontal to Horizontal Cable Cross

Type CC-11 Molds Horizontal to Horizontal Cable Cross

Type CC-11 Molds are used to join uncut horizontal cables at right angles to each other. Size range is #6 through 500 kcmil solid or concentric stranded copper conductors. Contact BURNDY® for information on molds for conductors not listed below.



Cable		Mold Number	Price Key	Weld Metal	Handle Clamps
Run	Tap				
#6	#6	M-5432	19	45	Incl.
#4	#4	M-2687	4	65	B-106
#2	#2	M-2689	4	90	B-106
	#4	M-2690	4	65	B-106
#1	#1	M-2691	4	115	B-106
	#2	M-2692	4	90	B-106
	#4	M-2693	4	90	B-106
1/0	1/0	M-2694	22	150	B-106
	#1	M-2695	22	150	B-106
	#2	M-2696	22	115	B-106
	#4	M-2697	22	115	B-106
2/0	2/0	M-2698	22	200	B-106
	1/0	M-2699	22	200	B-106
	#1	M-2700	22	150	B-106
	#2	M-2701	22	150	B-106
3/0	3/0	M-2702	22	250	B-106
	2/0	M-2703	22	200	B-106
	1/0	M-2704	22	200	B-106
	#1	M-2705	22	150	B-106
	#2	M-2706	22	150	B-106
4/0	4/0	M-2707	22	250	B-106
	3/0	M-2708	22	250	B-106
	2/0	M-2709	22	200	B-106
	1/0	M-2710	22	200	B-106
	#1	M-2711	22	150	B-106
	#2	M-2712	22	150	B-106
250 kcmil	250 kcmil	M-2713	22	2-150	B-106
	4/0	M-2714	22	2-150	B-106
	3/0	M-2715	22	2-150	B-106
	2/0	M-2716	22	250	B-106
	1/0	M-2717	22	150	B-106
	#1	M-2718	22	200	B-106
	#2	M-2719	22	150	B-106

Cable		Mold Number	Price Key	Weld Metal	Handle Clamps
Run	Tap				
500 kcmil	500 kcmil	M-2747	23	3-250	B-107
	250 kcmil	M-2751	23	500	B-107
	4/0	M-2752	23	500	B-107
	3/0	M-2753	23	500	B-107
	2/0	M-2754	23	2-200	B-107
	1/0	M-2755	22	2-150	B-106
	#1	M-2756	22	250	B-106
	#2	M-2757	22	250	B-106

NOTES:

For sizes not listed, contact BURNDY®
 Molds listed are for concentric stranded cable; add suffix “-S” to mold number for solid conductors
 For heavy duty molds, molds with wear plates or molds for Copperweld® cable, contact BURNDY®
 For expedited service, contact BURNDY®

Required Tools:

Handle Clamps - see chart for correct handle catalog number

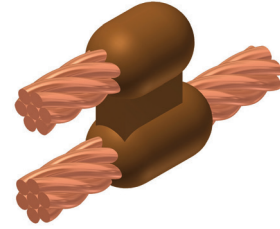
Recommended Accessories:

- 38-0309-00** Flint Ignitor;
- 38-3922-00** Mold Cleaning Brush;
- 38-0135-00** Cable Cleaning Brush;
- 38-0330-00** Cable Clamp

Molds: Horizontal Parallel Tap; Horizontal Parallel through Cables

Type CC-6 Molds Horizontal Parallel Tap

Type CC-6 Molds are used to join horizontal parallel tap to run connections. The tap cable is over the run cable. Size range is #6 through 4/0 solid or concentric stranded copper conductors. Contact BURNDY® for information on molds for conductors not listed below.



Cable		Mold Number	Price Key	Weld Metal	Handle Clamps
Run	Tap				
#6 Sol	#6 Sol	M-1270	4	25	B-106
#6	#6	M-1271	4	25	B-106
#4	#4	M-1272	4	32	B-106
	#6	M-1273	4	32	B-106
	#6 Sol	M-1274	4	32	B-106
	#8 Sol	M-1275	4	32	B-106
#2	#2	M-1276	4	65	B-106
	#4	M-1277	4	45	B-106
	#6	M-1278	4	32	B-106
	#6 Sol	M-1279	4	32	B-106
	#8 Sol	M-1280	4	32	B-106
#1	#1	M-1281	4	65	B-106
	#2	M-1282	4	65	B-106
	#4	M-1283	4	45	B-106
	#6	M-1284	4	45	B-106
	#6 Sol	M-1285	4	45	B-106
	#8 Sol	M-1286	4	45	B-106
	1/0	1/0	M-1287	4	90
#1		M-1288	4	90	B-106
#2		M-1289	4	65	B-106
#4		M-1290	4	65	B-106
#6		M-1291	4	45	B-106
#6 Sol		M-1292	4	45	B-106
#8 Sol		M-1293	4	45	B-106

Cable		Mold Number	Price Key	Weld Metal	Handle Clamps
Run	Tap				
2/0	2/0	M-1294	4	115	B-106
	1/0	M-1295	4	115	B-106
	#1	M-1296	4	90	B-106
	#2	M-1297	4	90	B-106
	#4	M-1298	4	65	B-106
	#6	M-1299	4	65	B-106
	#6 Sol	M-1300	4	65	B-106
	#8 Sol	M-1301	4	65	B-106
	4/0	4/0	M-1302	4	150
2/0		M-1303	4	115	B-106
1/0		M-1304	4	115	B-106
#1		M-1305	4	115	B-106
#2		M-1306	4	115	B-106
#4		M-1307	4	90	B-106
#6		M-1308	4	90	B-106
#6 Sol		M-1309	4	90	B-106
#8 Sol		M-1310	4	90	B-106

NOTES:

For sizes not listed, contact BURNDY®
 Molds listed are for concentric stranded cable; add suffix "-S" to mold number for solid conductors
 For heavy duty molds, molds with wear plates or molds for Copperweld® cable, contact BURNDY®
 For expedited service, contact BURNDY®

Required Tools:

Handle Clamps - see chart for correct handle catalog number

Recommended Accessories:

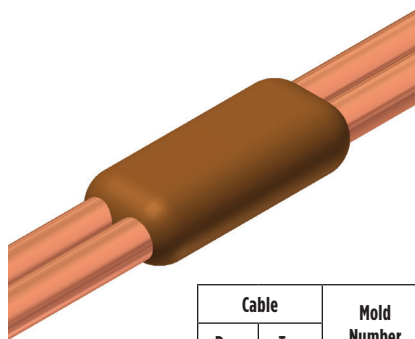
38-0309-00 Flint Ignitor; **38-3922-00** Mold Cleaning Brush; **38-0135-00** Cable Cleaning Brush; **38-0330-00** Cable Clamp

Type CC-14 Molds Horizontal Parallel through Cables

Type CC-14 Molds are used to join horizontal parallel through run cables. Cables run side by side in the mold. Size range is #8 through #6 solid or concentric stranded copper conductors. Contact BURNDY® for information on molds for conductors not listed.

NOTES:

For sizes not listed, contact BURNDY®
 Molds listed are for concentric stranded cable; add suffix "-S" to mold number for solid conductors
 For heavy duty molds, molds with wear plates or molds for Copperweld® cable, contact BURNDY®
 For expedited service, contact BURNDY®
 Sold complete with handles

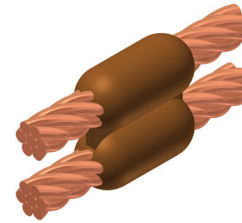


Cable		Mold Number	Price Key	Weld Metal
Run	Tap			
#8	#8	M-5709	18	15
#6	#6	M-5618	18	25

Molds: Horizontal Parallel through Cables

Type CC-7 Molds Horizontal Parallel through Cables

Type CC-7 Type Molds are used to join horizontal parallel through run cables. One cable runs above the other cable in the mold. Size range is #6 through 4/0 solid or concentric stranded copper conductors. Contact BURNDY® for information on molds for conductors not listed below.



Cable		Mold Number	Price Key	Weld Metal	Handle Clamps
Run	Tap				
#4	#4	M-1311	4	32	B-106
	#6	M-5627	4	32	B-106
	#6 Sol	M-8882	4	32	B-106
	#8	M-5629	4	32	B-106
	#8 Sol	M-5630	4	32	B-106
#2	#2	M-1313	4	65	B-106
	#4	M-1314	4	65	B-106
	#6	M-5631	4	45	B-106
	#6 Sol	M-5632	4	45	B-106
	#8	M-5634	4	45	B-106
	#8 Sol	M-5635	4	45	B-106
#1	#1	M-1315	4	65	B-106
	#2	M-1316	4	65	B-106
	#4	M-1317	4	65	B-106
	#6	M-5636	4	65	B-106
	#6 Sol	M-5637	4	65	B-106
	#8	M-5638	4	45	B-106
	#8 Sol	M-5639	4	45	B-106
1/0	1/0	M-1318	4	90	B-106
	#1	M-1319	4	65	B-106
	#2	M-1320	4	65	B-106
	#4	M-1321	4	65	B-106
	#6	M-5642	4	65	B-106
	#6 Sol	M-1208	4	65	B-106
	#8	M-5644	4	65	B-106
	#8 Sol	M-5645	4	65	B-106

Cable		Mold Number	Price Key	Weld Metal	Handle Clamps
Run	Tap				
2/0	2/0	M-1322	4	115	B-106
	1/0	M-1323	4	115	B-106
	#1	M-1324	4	90	B-106
	#2	M-1325	4	90	B-106
	#4	M-5659	4	90	B-106
	#6	M-5342	4	90	B-106
	#6 Sol	M-5652	4	90	B-106
	#8	M-5668	4	65	B-106
3/0	#8 Sol	M-5943	4	65	B-106
	3/0	M-1326	4	150	B-106
	2/0	M-1327	4	150	B-106
	1/0	M-1328	4	115	B-106
	#1	M-1329	4	115	B-106
	#2	M-1330	4	115	B-106
	#4	M-6046	4	115	B-106
	#6	M-5676	4	90	B-106
	#6 Sol	M-5679	4	90	B-106
	#8	M-5680	4	90	B-106
4/0	#8 Sol	M-5682	4	90	B-106
	4/0	M-1331	4	200	B-106
	3/0	M-1332	4	200	B-106
	2/0	M-1333	4	150	B-106
	1/0	M-1334	4	150	B-106
	#1	M-1335	4	150	B-106
	#2	M-1336	4	150	B-106
	#4	M-5340	4	150	B-106
	#6	M-5684	4	90	B-106
	#6 Sol	M-6552	4	90	B-106
	#8	M-5686	4	90	B-106
	#8 Sol	M-5688	4	90	B-106

NOTES:

For sizes not listed, contact BURNDY®
 Molds listed are for concentric stranded cable; add suffix "-S" to mold number for solid conductors
 For heavy duty molds, molds with wear plates or molds for Copperweld® cable, contact BURNDY®
 For expedited service, contact BURNDY®

Required Tools:

Handle Clamps - see chart for correct handle catalog number

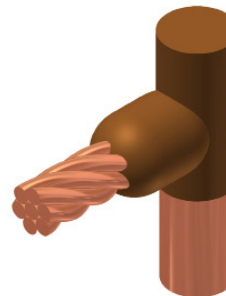
Recommended Accessories:

- 38-0309-00** Flint Ignitor;
- 38-3922-00** Mold Cleaning Brush;
- 38-0135-00** Cable Cleaning Brush;
- 38-0330-00** Cable Clamp

Molds: Horizontal Cable Terminal to Ground Rod

Type CR-1 Molds Horizontal Cable Terminal to Ground Rod

Type CR-1 Molds are used to terminate horizontal copper cable at the top of a vertical ground rod. Size range is #6 through 1000 kcmil solid or concentric stranded copper conductors; 1/2" through 1" for the ground rod. Contact BURNDY® for information on molds for conductors not listed below.



Cable		Mold Number	Price Key	Weld Metal	Handle Clamps
Grd Rod	Tap				
1/2"	#6	M-8402	18 ①	25	Incl.
	#4	M-8403	18 ①	25	Incl.
	#2	M-495	4	65	B-106
	#1	M-496	4	65	B-106
	1/0	M-497	4	90	B-106
	2/0	M-498	4	90	B-106
	3/0	M-499	4	90	B-106
	4/0	M-500	4	90	B-106
	250 kcmil	M-501	4	90	B-106
	300 kcmil	M-502	4	90	B-106
5/8"	#6	M-8414	18 ①	32	Incl.
	#4	M-8415	18 ①	32	Incl.
	#2	M-503	4	65	B-106
	#1	M-504	4	65	B-106
	1/0	M-505	4	90	B-106
	2/0	M-506	4	90	B-106
	3/0	M-507	4	90	B-106
	4/0	M-508	4	90	B-106
	250 kcmil	M-509	4	90	B-106
	300 kcmil	M-510	4	115	B-106
	350 kcmil	M-511	4	115	B-106
	500 kcmil	M-513	4	150	B-106

① **38-0309-00** Flint ignitor included

NOTES:

For sizes not listed, contact BURNDY®
 Molds listed are for concentric stranded cable; add suffix "-S" to mold number for solid conductors
 For heavy duty molds, molds with wear plates or molds for Copperweld® cable, contact BURNDY®
 For expedited service, contact BURNDY®

Cable		Mold Number	Price Key	Weld Metal	Handle Clamps
Grd Rod	Tap				
3/4"	#6	M-8422	18 ①	32	Incl.
	#4	M-8426	19 ①	45	Incl.
	#2	M-5781	4	90	B-106
	#1	M-514	4	90	B-106
	1/0	M-515	4	90	B-106
	2/0	M-516	4	90	B-106
	3/0	M-517	4	90	B-106
	4/0	M-518	4	90	B-106
	250 kcmil	M-519	4	90	B-106
	300 kcmil	M-520	4	115	B-106
	350 kcmil	M-521	4	115	B-106
	500 kcmil	M-523	4	150	B-106
	750 kcmil	M-524	4	250	B-106
	1"	1/0	M-525	4	150
2/0		M-526	4	150	B-106
3/0		M-527	4	150	B-106
4/0		M-528	4	150	B-106
250 kcmil		M-529	4	150	B-106
300 kcmil		M-530	4	200	B-106
350 kcmil		M-531	4	200	B-106
500 kcmil		M-533	4	200	B-106
750 kcmil		M-534	4	250	B-106
1000 kcmil		M-535	5	2-150	B-106

Required Tools:

Handle Clamps - see chart for correct handle catalog number

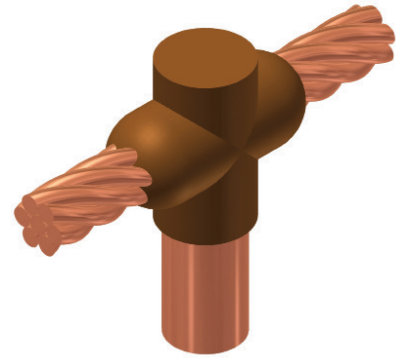
Recommended Accessories:

- 38-0309-00** Flint Ignitor;
- 38-3922-00** Mold Cleaning Brush;
- 38-0135-00** Cable Cleaning Brush;
- 38-0330-00** Cable Clamp

Molds: Horizontal Cable to Ground Rod

Type CR-2 Molds Horizontal Cable to Ground Rod

Type CR-2 Molds are used to join horizontal through copper cable to the top of a vertical ground rod. Size range is #6 through 1000 kcmil solid or concentric stranded copper conductors; 1/2" through 1" for the ground rod. Contact BURNDY® for information on molds for conductors not listed below.



Cable		Mold Number	Price Key	Weld Metal	Handle Clamps	
Grd Rod	Tap					
1/2"	#6	M-8434	18 ①	32	Incl.	
	#4	M-8435	18 ①	32	Incl.	
	#2	M-537	4	90	B-106	
	#1	M-538	4	90	B-106	
	1/0	M-539	4	90	B-106	
	2/0	M-540	4	90	B-106	
	3/0	M-541	4	115	B-106	
	4/0	M-542	4	115	B-106	
	250 kcmil	M-543	4	150	B-106	
	300 kcmil	M-544	4	200	B-106	
	5/8"	#6	M-8441	18	32	Incl.
		#4	M-8442	18	32	Incl.
#2		M-545	4	90	B-106	
#1		M-546	4	90	B-106	
1/0		M-547	4	90	B-106	
2/0		M-548	4	115	B-106	
3/0		M-549	4	115	B-106	
4/0		M-550	4	115	B-106	
250 kcmil		M-551	4	150	B-106	
300 kcmil		M-552	4	200	B-106	
350 kcmil		M-553	4	200	B-106	
500 kcmil		M-555	4	250	B-106	

Cable		Mold Number	Price Key	Weld Metal	Handle Clamps	
Grd Rod	Tap					
3/4"	#6	M-8452	19 ①	45	Incl.	
	#4	M-8454	19 ①	65	Incl.	
	#2	M-556	4	90	B-106	
	#1	M-557	4	90	B-106	
	1/0	M-558	4	115	B-106	
	2/0	M-559	4	115	B-106	
	3/0	M-560	4	115	B-106	
	4/0	M-561	4	115	B-106	
	250 kcmil	M-562	4	150	B-106	
	300 kcmil	M-563	4	200	B-106	
	350 kcmil	M-564	4	200	B-106	
	500 kcmil	M-566	4	250	B-106	
	750 kcmil	M-567	5	2-200	B-107	
	1"	1/0	M-569	4	150	B-106
		2/0	M-570	4	150	B-106
		3/0	M-571	4	150	B-106
4/0		M-572	4	150	B-106	
250 kcmil		M-573	4	200	B-106	
300 kcmil		M-574	4	200	B-106	
350 kcmil		M-575	4	200	B-106	
500 kcmil		M-577	4	250	B-106	
750 kcmil		M-578	5	2-200	B-107	
1000 kcmil		M-579	5	500	B-107	

① 38-0309-00 Flint ignitor included

NOTES:

For sizes not listed, contact BURNDY®
 Molds listed are for concentric stranded cable; add suffix "-S" to mold number for solid conductors
 For heavy duty molds, molds with wear plates or molds for Copperweld® cable, contact BURNDY®
 For expedited service, contact BURNDY®

Required Tools:

Handle Clamps - see chart for correct handle catalog number

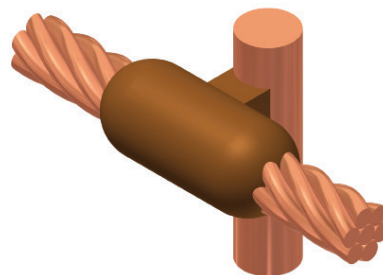
Recommended Accessories:

- 38-0309-00** Flint Ignitor;
- 38-3922-00** Mold Cleaning Brush;
- 38-0135-00** Cable Cleaning Brush;
- 38-0330-00** Cable Clamp

Molds: Horizontal Through Cable to Ground Rod

Type CR-3 Molds Horizontal Through Cable to Ground Rod

Type CR-3 Molds are used to join horizontal through run cable to the side of a vertical ground rod. Size range is #6 through 1000 kcmil solid or concentric stranded copper conductors; 1/2" through 1" for the ground rod. Contact BURNDY® for information on molds for conductors not listed below.



Cable		Mold Number	Price Key	Weld Metal	Handle Clamps
Grd Rod	Tap				
1/2"	#6	M-5321	24	65	B-106
	#4	M-2154	24	90	B-106
	#2	M-2155	24	90	B-106
	#1	M-2156	24	115	B-106
	1/0	M-1581	24	115	B-106
	2/0	M-1582	24	115	B-106
	4/0	M-1583	24	150	B-106
	250 kcmil	M-1584	24	150	B-106
5/8"	#6	M-5660	24	65	B-106
	#4	M-2157	24	90	B-106
	#2	M-2158	24	90	B-106
	#1	M-2159	24	115	B-106
	1/0	M-1586	24	115	B-106
	2/0	M-1587	24	115	B-106
	4/0	M-1588	24	150	B-106
	250 kcmil	M-1589	24	150	B-106
500 kcmil	M-1593	13	2-200	B-107	

Cable		Mold Number	Price Key	Weld Metal	Handle Clamps
Grd Rod	Tap				
3/4"	#6	M-6630	24	65	B-106
	#4	M-2160	24	90	B-106
	#2	M-2161	24	90	B-106
	#1	M-2162	24	115	B-106
	1/0	M-1594	24	115	B-106
	2/0	M-1595	24	115	B-106
	4/0	M-1596	24	150	B-106
	250 kcmil	M-1597	24	200	B-106
	500 kcmil	M-1601	13	500	B-107
	750 kcmil	M-1602	13	3-250	B-107
1"	#6	M-6906	24	90	B-106
	#4	M-2163	24	90	B-106
	#2	M-2164	24	90	B-106
	#1	M-2165	24	115	B-106
	1/0	M-1603	24	115	B-106
	2/0	M-1604	24	115	B-106
	4/0	M-1605	24	150	B-106
	250 kcmil	M-1606	24	200	B-106
	500 kcmil	M-1610	13	500	B-107
	750 kcmil	M-1611	13	3-250	B-107

NOTES:

For sizes not listed, contact BURNDY®
 Molds listed are for concentric stranded cable; add suffix "-S" to mold number for solid conductors
 For heavy duty molds, molds with wear plates or molds for Copperweld® cable, contact BURNDY®
 For expedited service, contact BURNDY®

Required Tools:

Handle Clamps - see chart for correct handle catalog number

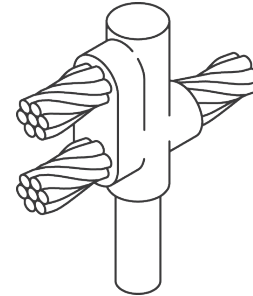
Recommended Accessories:

- 38-0309-00** Flint Ignitor;
- 38-3922-00** Mold Cleaning Brush;
- 38-0135-00** Cable Cleaning Brush;
- 38-0330-00** Cable Clamp

Molds: Horizontal Run and Tap Cables to Ground Rod

Type CR-17 Molds Horizontal Run and Tap Cables to Ground Rod

Type CR-17 Molds are used to join horizontal run and tap cables to the top of a vertical ground rod. Size range is #4 through 750 kcmil solid or concentric stranded copper conductors; 1/2" through 1" for the ground rod. Contact BURNDY® for information on molds for conductors not listed below.



Cable		Mold Number	Price Key	Weld Metal	Handle Clamps
Grd Rod	Tap				
1/2"	#4	M-5416	4	90	B-106
	#2	M-6165	4	90	B-106
	#1	M-5830	4	90	B-106
	1/0	M-5940	4	115	B-106
	2/0	M-5850	4	150	B-106
	3/0	M-5833	4	200	B-106
	4/0	M-5380	4	200	B-106
5/8"	#4	M-5972	4	90	B-106
	#2	M-5935	4	115	B-106
	#1	M-5699	4	115	B-106
	1/0	M-5746	4	150	B-106
	2/0	M-5963	4	200	B-106
	3/0	M-5734	4	250	B-106
	4/0	M-5732	4	250	B-106
	250 kcmil	M-5722	5	2-150	B-107
3/4"	#4	M-5698	4	90	B-106
	#2	M-5294	4	115	B-106
	#1	M-5390	4	115	B-106
	1/0	M-6025	4	150	B-106
	2/0	M-5738	4	200	B-106
	3/0	M-6003	4	250	B-106
	4/0	M-2566	4	250	B-106
	250 kcmil	M-5904	5	2-150	B-107
	300 kcmil	M-5857	5	2-200	B-107
	350 kcmil	M-5777	5	2-200	B-107
	500 kcmil	M-5961	5	3-200	B-107

Cable		Mold Number	Price Key	Weld Metal	Handle Clamps
Grd Rod	Tap				
1"	#4	M-5556	4	115	B-106
	#2	M-5555	4	150	B-106
	#1	M-6048	4	150	B-106
	1/0	M-5992	4	200	B-106
	2/0	M-5877	4	250	B-106
	3/0	M-5821	5	2-150	B-107
	4/0	M-5820	5	2-150	B-107
	250 kcmil	M-5807	5	2-200	B-107
	300 kcmil	M-5803	5	500	B-107
	350 kcmil	M-5561	5	500	B-107
	500 kcmil	M-5515	6	3-250	B-107
	750 kcmil	M-5513	6	2-500	B-107

NOTES:

For sizes not listed, contact BURNDY®
 Molds listed are for concentric stranded cable; add suffix "-S" to mold number for solid conductors
 For heavy duty molds, molds with wear plates or molds for Copperweld® cable, contact BURNDY®
 For expedited service, contact BURNDY®

Required Tools:

Handle Clamps - see chart for correct handle catalog number

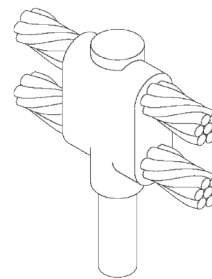
Recommended Accessories:

- 38-0309-00** Flint Ignitor;
- 38-3922-00** Mold Cleaning Brush;
- 38-0135-00** Cable Cleaning Brush;
- 38-0330-00** Cable Clamp

Molds: Horizontal Parallel Run Cables to Ground Rod

Type CR-24 Molds Horizontal Parallel Run Cables to Ground Rod

Type CR-24 Molds are used to join horizontal parallel cables to the top of a vertical ground rod. Size range is #4 through 750 kcmil solid or concentric stranded copper conductors; 1/2" through 1" for the ground rod. Contact BURNDY® for information on molds for conductors not listed below.



Cable		Mold Number	Price Key	Weld Metal	Handle Clamps
Grd Rod Size	Tap				
1/2"	#4	M-5640	4	115	B-106
	#2	M-5667	4	115	B-106
	#1	M-6002	4	115	B-106
	1/0	M-5767	4	150	B-106
	2/0	M-5604	4	200	B-106
	3/0	M-5560	4	250	B-106
	4/0	M-6766	4	250	B-106
5/8"	#4	M-6208	4	115	B-106
	#2	M-5702	4	150	B-106
	#1	M-5517	4	150	B-106
	1/0	M-5573	4	200	B-106
	2/0	M-8451	4	250	B-106
	3/0	M-2510	5	2-150	B-107
	4/0	M-5428	5	2-150	B-107
	250 kcmil	M-1212	5	2-200	B-107
	300 kcmil	M-2084	5	500	B-107
	350 kcmil	M-2558	5	500	B-107
	500 kcmil	M-2450	5	3-250	B-107
3/4"	#4	M-8011	4	115	B-106
	#2	M-2320	4	150	B-106
	#1	M-2235	4	150	B-106
	1/0	M-6051	4	200	B-106
	2/0	M-8802	4	250	B-106
	3/0	M-8726	5	2-150	B-107
	4/0	M-5677	5	2-150	B-107
	250 kcmil	M-8461	5	2-200	B-107
	300 kcmil	M-8428	5	500	B-107
	350 kcmil	M-8294	5	500	B-107
	500 kcmil	M-8214	5	3-250	B-107
	750 kcmil	M-8027	6	2-500	B-107

Cable		Mold Number	Price Key	Weld Metal	Handle Clamps
Grd Rod Size	Tap				
1"	#4	M-5330	4	150	B-106
	#2	M-5332	4	200	B-106
	#1	M-5333	4	200	B-106
	1/0	M-5334	4	250	B-106
	2/0	M-5335	5	2-150	B-107
	3/0	M-5336	5	2-200	B-107
	4/0	M-5337	5	2-200	B-107
	250 kcmil	M-5338	5	500	B-107
	300 kcmil	M-5341	5	3-200	B-107
	350 kcmil	M-5351	5	3-200	B-107
	500 kcmil	M-5352	6	2-500	B-107
	750 kcmil	M-5353	6	5-250	B-107

NOTES:

For sizes not listed, contact BURNDY®
 Molds listed are for concentric stranded cable; add suffix "-S" to mold number for solid conductors
 For heavy duty molds, molds with wear plates or molds for Copperweld® cable, contact BURNDY®
 For expedited service, contact BURNDY®

Required Tools:

Handle Clamps - see chart for correct handle catalog number

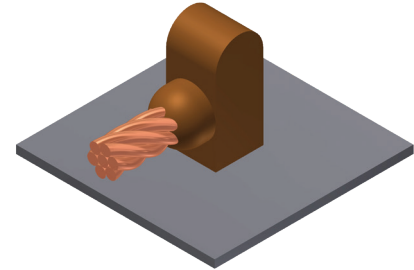
Recommended Accessories:

- 38-0309-00** Flint Ignitor;
- 38-3922-00** Mold Cleaning Brush;
- 38-0135-00** Cable Cleaning Brush;
- 38-0330-00** Cable Clamp

Molds: Horizontal Cable to Horizontal Steel

Type CS-1 Molds Horizontal Cable to Horizontal Steel Surface

Type CS-1 Molds are used to terminate a horizontal copper cable to any horizontal steel surface. Note that the cable is OFF the surface. Size range is 1/0 through 1000 kcmil solid or concentric stranded copper conductors. Contact BURNDY® for information on molds for conductors not listed below.



Cable Size	Mold Number	Price Key	Weld Metal	Handle Clamps
1/0	M-644	4	90	B-106
2/0	M-645	4	90	B-106
3/0	M-646	4	115	B-106
4/0	M-647	4	115	B-106
250 kcmil	M-648	4	115	B-106
300 kcmil	M-649	4	150	B-106
350 kcmil	M-650	4	200	B-106
500 kcmil	M-652	4	200	B-106
750 kcmil	M-653	5	2-150	B-106
1000 kcmil	M-654	5	2-200	B-107

NOTES:

For sizes not listed, contact BURNDY®
Molds listed are for concentric stranded cable; add suffix "-S" to mold number for solid conductors

For heavy duty molds, molds with wear plates or molds for Copperweld® cable, contact BURNDY®
For expedited service, contact BURNDY®

Required Tools:

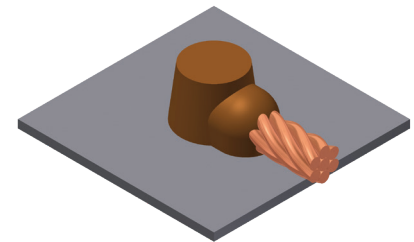
Handle Clamps - see chart for correct handle catalog number

Recommended Accessories:

38-0309-00 Flint Ignitor;
38-3922-00 Mold Cleaning Brush;
38-0135-00 Cable Cleaning Brush;
38-0330-00 Cable Clamp

Type CS-8 Molds Horizontal Cable to Horizontal Steel Surface

Type CS-8 Molds are used to terminate a horizontal copper cable to any horizontal steel surface. Note that the cable is ON the surface. Size range is #6 through 1000 kcmil solid or concentric stranded copper conductors. Contact BURNDY® for information on molds for conductors not listed below.



Cable Size	Mold Number	Price Key	Weld Metal	Handle Clamps
#6	M-628	3 ①	45	Incl.
#4	M-629	3 ①	45	Incl.
#2	M-630	3 ①	45	Incl.
#1	M-631	3 ①	65	Incl.
1/0	M-7146	4	90	B-106
2/0	M-7075	4	90	B-106
3/0	M-2199	4	115	B-106
4/0	M-6114	4	115	B-106
250 kcmil	M-2200	4	115	B-106
300 kcmil	M-2506	4	150	B-106
350 kcmil	M-2507	4	200	B-106
500 kcmil	M-2509	4	200	B-106
750 kcmil	M-2542	5	2-150	B-107
1000 kcmil	M-2511	5	2-200	B-107

NOTES:

For sizes not listed, contact BURNDY®
Molds listed are for concentric stranded cable; add suffix "-S" to mold number for solid conductors

For heavy duty molds, molds with wear plates or molds for Copperweld® cable, contact BURNDY®
For expedited service, contact BURNDY®

Required Tools:

Handle Clamps - see chart for correct handle catalog number

Recommended Accessories:

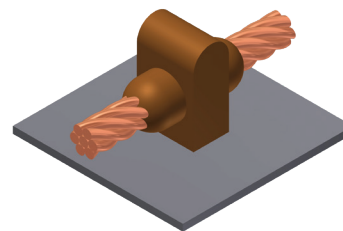
38-0309-00 Flint Ignitor;
38-3922-00 Mold Cleaning Brush;
38-0135-00 Cable Cleaning Brush;
38-0330-00 Cable Clamp

① **38-0309-00** Flint ignitor included

Molds: Horizontal Through Cable to Horizontal Steel

Type CS-2 Molds Horizontal Through Cable to Horizontal Steel Surface

Type CS-2 Molds are used to join horizontal through copper cable to any horizontal steel surface. Note the cable is OFF the surface. Size range is 1/0 through 1000 kcmil solid or concentric stranded copper conductors. Contact BURNDY® for information on molds for conductors not listed below.



Cable Size	Mold Number	Price Key	Weld Metal	Handle Clamps
1/0	M-616	4	90	B-106
2/0	M-617	4	115	B-106
3/0	M-618	4	115	B-106
4/0	M-619	4	150	B-106
250 kcmil	M-620	4	150	B-106
300 kcmil	M-621	4	200	B-106
350 kcmil	M-622	4	250	B-106
500 kcmil	M-624	5	2-150	B-107
750 kcmil	M-625-H	5	3-250	B-107
1000 kcmil	M-626-H	5	2-500	B-107

NOTES:

For sizes not listed, contact BURNDY®
 Molds listed are for concentric stranded cable; add suffix “-S” to mold number for solid conductors
 For heavy duty molds, molds with wear plates or molds for Copperweld® cable, contact BURNDY®
 For expedited service, contact BURNDY®

Required Tools:

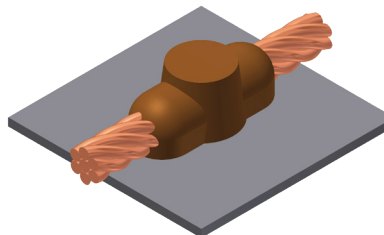
Handle Clamps - see chart for correct handle catalog number

Recommended Accessories:

- 38-0309-00** Flint Ignitor;
- 38-3922-00** Mold Cleaning Brush;
- 38-0135-00** Cable Cleaning Brush;
- 38-0330-00** Cable Clamp

Type CS-9 Molds Horizontal Through Cable to Horizontal Steel Surface

Type CS-9 Molds are used to join horizontal through copper cable to any horizontal steel surface. Note the cable is ON the surface. Size range is #6 through 500 kcmil solid or concentric stranded copper conductors. Contact BURNDY® for information on molds for conductors not listed below.



Cable Size	Mold Number	Price Key	Weld Metal	Handle Clamps
#6	M-602	3 ①	45	Incl.
#4	M-603	3 ①	45	Incl.
#2	M-604	3 ①	45	Incl.
#1	M-605	3 ①	65	Incl.
1/0	M-8379	4	90	B-106
2/0	M-5331	4	115	B-106
3/0	M-8381	4	115	B-106
4/0	M-7192	4	150	B-106
250 kcmil	M-8413	4	150	B-106
300 kcmil	M-8423	4	200	B-106
350 kcmil	M-8410	4	250	B-106
500 kcmil	M-5065	5	2-150	B-107

NOTES:

For sizes not listed, contact BURNDY®
 Molds listed are for concentric stranded cable; add suffix “-S” to mold number for solid conductors
 For heavy duty molds, molds with wear plates or molds for Copperweld® cable, contact BURNDY®
 For expedited service, contact BURNDY®

Required Tools:

Handle Clamps - see chart for correct handle catalog number

Recommended Accessories:

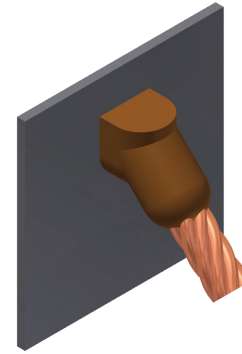
- 38-0309-00** Flint Ignitor;
- 38-3922-00** Mold Cleaning Brush;
- 38-0135-00** Cable Cleaning Brush;
- 38-0330-00** Cable Clamp

① **38-0309-00** Flint ignitor included

Molds: Angular Cable Drop to Vertical Steel

Type CS-3 Molds Angular Cable Drop to Vertical Steel Surface

Type CS-3 Molds are used to join the end of a copper cable at a 45° angle to a vertical steel surface. Size range is #6 through 1000 kcmil solid or concentric stranded copper conductors. Contact BURNDY® for information on molds for conductors not listed below.



Cable Size	Pipe Size	Mold Number	Price Key	Weld Metal	Handle Clamps
#6	Flat Steel Only	M-585	4	45	B-106
#4	12" & up	M-586 ①	4	45	B-106
#3	Flat Steel Only	M-587	4	45	B-106
#2	12" & up	M-588 ①	4	45	B-106
#1	12" & up	M-589 ①	4	65	B-106
1/0	12" & up	M-590 ①	4	90	B-106
2/0	12" & up	M-591 ①	4	90	B-106
3/0	12" & up	M-592 ①	4	115	B-106
4/0	12" & up	M-593 ①	4	115	B-106
250 kcmil	Flat Steel Only	M-594	4	115	B-106
300 kcmil	Flat Steel Only	M-595	4	150	B-106
350 kcmil	Flat Steel Only	M-596	4	200	B-106
500 kcmil	Flat Steel Only	M-598	4	200	B-106
750 kcmil	Flat Steel Only	M-599	5	2-150	B-106
1000 kcmil	Flat Steel Only	M-600	5	2-200	B-106
#4	1-1/4" to 4"	M-2476	4	45	B-106
#4	4" to 6"	M-2477	4	45	B-106
#4	6" to 10"	M-2478	4	45	B-106
#2 Sol	1-1/4" to 4"	M-9233-S	4	45	B-106
#2 Sol	4" to 6"	M-2480-S	4	45	B-106
#2 Sol	6" to 10"	M-2583-S	4	45	B-106
#2 Sol	12" & up	M-588-S ①	4	45	B-106
#2	1-1/4" to 4"	M-9233	4	45	B-106
#2	4" to 6"	M-2480	4	45	B-106
#2	6" to 10"	M-2583	4	45	B-106
#1	1-1/4" to 4"	M-2482	4	65	B-106
#1	4" to 6"	M-2483	4	65	B-106
#1	6" to 10"	M-2484	4	65	B-106
1/0	1-1/4" to 4"	M-2486	4	90	B-106
1/0	4" to 6"	M-2487	4	90	B-106
1/0	6" to 10"	M-2488	4	90	B-106

Cable Size	Pipe Size	Mold Number	Price Key	Weld Metal	Handle Clamps
2/0	1-1/4" to 4"	M-8833	4	90	B-106
2/0	4" to 6"	M-2490	4	90	B-106
2/0	6" to 10"	M-2491	4	90	B-106
3/0	1-1/4" to 4"	M-2493	4	115	B-106
3/0	4" to 6"	M-2494	4	115	B-106
3/0	6" to 10"	M-2495	4	115	B-106
4/0	1-1/4" to 4"	M-9021	4	115	B-106
4/0	4" to 6"	M-2497	4	115	B-106
4/0	6" to 10"	M-2498	4	115	B-106

① Flat Surface Mold; These items can be used to Flat Steel or to Pipe

NOTES:

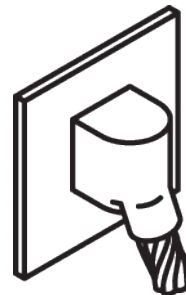
For sizes not listed, contact BURNDY®
 Molds listed are for concentric stranded cable; add suffix "-S" to mold number for solid conductors
 For heavy duty molds, molds with wear plates or molds for Copperweld® cable, contact BURNDY®
 For expedited service, contact BURNDY®

Required Tools:

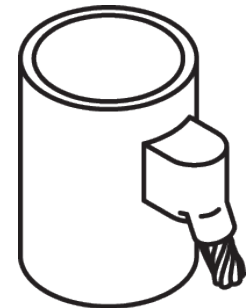
Handle Clamps - see chart for correct handle catalog number

Recommended Accessories:

- 38-0309-00** Flint Ignitor
- 38-3922-00** Mold Cleaning Brush
- 38-0135-00** Cable Cleaning Brush
- 38-0330-00** Cable Clamp



Cable to Flat Steel

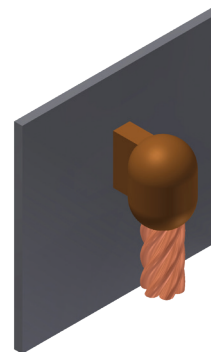


Cable to Pipe

Molds: Vert. Cable to Vert. Steel; Vert. through Cable to Vert. Steel

Type CS-23 Molds Vertical Cable Drop to Vertical Steel Surface

Type CS-23 Molds are used to join vertical cable down to a vertical steel surface. Note that the cable is OFF the surface. Size range is #6 through 500 kcmil solid or concentric stranded copper conductors. Contact BURNDY® for information on molds for conductors not listed below.



Cable Size	Mold Number	Price Key	Weld Metal	Handle Clamps
#6	M-5389	4	45	B-106
#4	M-5359	4	65	B-106
#2	M-2781	4	65	B-106
#1	M-5361	4	90	B-106
1/0	M-2189	4	115	B-106
2/0	M-2540	4	115	B-106
3/0	M-5362	4	150	B-106
4/0	M-8718	4	150	B-106
250 kcmil	M-8165	4	200	B-106
300 kcmil	M-5363	4	200	B-106
350 kcmil	M-9029	4	250	B-106
500 kcmil	M-8512	17	2-150	B-106

NOTES:

For sizes not listed, contact BURNDY®
Molds listed are for concentric stranded cable; add suffix "-S" to mold number for solid conductors
For heavy duty molds, molds with wear plates or molds for Copperweld® cable, contact BURNDY®
For expedited service, contact BURNDY®

Required Tools:

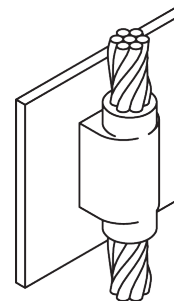
Handle Clamps - see chart for correct handle catalog number

Recommended Accessories:

38-0309-00 Flint Ignitor;
38-3922-00 Mold Cleaning Brush;
38-0135-00 Cable Cleaning Brush;
38-0330-00 Cable Clamp

Type CS-4 Molds Vertical Through Cable to Vertical Steel Surface

Type CS-4 Molds are used to join a vertical through copper cable to a vertical steel surface. Note that the cable is OFF the surface. For molds with the cable on the surface, contact BURNDY®. Size range is #6 through 500 kcmil solid or concentric stranded copper conductors. Contact BURNDY® for information on molds for conductors not listed.



Cable Size	Mold Number	Price Key	Weld Metal	Handle Clamps
#6	M-1215	4	90	B-106
#4	M-1216	4	90	B-106
#2	M-1218	4	115	B-106
#1	M-1219	4	115	B-106
1/0	M-1220	17	200	B-106
2/0	M-1221	17	200	B-106
3/0	M-1222	17	250	B-106
4/0	M-1223	17	250	B-106
250 kcmil	M-1224	17	250	B-106
300 kcmil	M-1225-H	6	500	B-107
350 kcmil	M-1226-H	6	3-200	B-107
500 kcmil	M-1228-H	6	3-250	B-107

NOTES:

For sizes not listed, contact BURNDY®
Molds listed are for concentric stranded cable; add suffix "-S" to mold number for solid conductors
For heavy duty molds, molds with wear plates or molds for Copperweld® cable, contact BURNDY®
For expedited service, contact BURNDY®

Required Tools:

Handle Clamps - see chart for correct handle catalog number

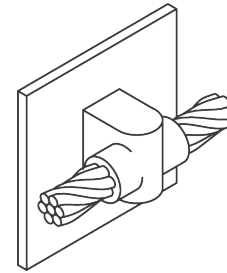
Recommended Accessories:

38-0309-00 Flint Ignitor;
38-3922-00 Mold Cleaning Brush;
38-0135-00 Cable Cleaning Brush;
38-0330-00 Cable Clamp

Molds: Horizontal Through Cable to Vertical Steel; Overhead Vertical Tap Cable to Vertical Steel

Type CS-6 Molds Horizontal Through Cable to Vertical Steel Surface

Type CS-6 Molds are used to join horizontal through copper cable to a vertical steel surface. Note that the cable is OFF the surface. Size range is #6 through 250 kcmil solid or concentric stranded copper conductors. Contact BURNDY® for information on molds for conductors not listed below.



Cable Size	Mold Number	Price Key	Weld Metal	Handle Clamps
#6	M-1626	4	65	B-106
#4	M-1627	4	65	B-106
#2	M-1628	4	65	B-106
#1	M-1629	4	90	B-106
1/0	M-1630	4	115	B-106
2/0	M-1631	4	115	B-106
3/0	M-1632	4	150	B-106
4/0	M-1633	4	150	B-106
250 kcmil	M-1634	4	150	B-106

NOTES:

For sizes not listed, contact BURNDY®
Molds listed are for concentric stranded cable; add suffix "-S" to mold number for solid conductors
For heavy duty molds, molds with wear plates or molds for Copperweld™ cable, contact BURNDY®
For expedited service, contact BURNDY®

Required Tools:

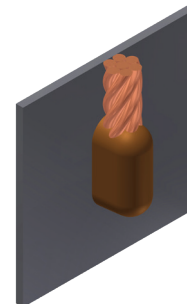
Handle Clamps - see chart for correct handle catalog number

Recommended Accessories:

38-0309-00 Flint Ignitor
38-3922-00 Mold Cleaning Brush
38-0135-00 Cable Cleaning Brush
38-0330-00 Cable Clamp

Type CS-7 Molds Overhead Vertical Tap Cable to Vertical Steel Surface

Type CS-7 Molds are used to join an overhead vertical copper conductor drop tap to a vertical steel surface. Size range is #6 through 1000 kcmil solid or concentric stranded copper conductors. Contact BURNDY® for information on molds for conductors not listed below.



Cable Size	Mold Number	Price Key	Weld Metal	Handle Clamps
#6	M-1635	4	65	B-106
#4	M-1636	4	65	B-106
#3	M-1637	4	65	B-106
#2	M-1638	4	65	B-106
#1	M-1639	4	90	B-106
1/0	M-1640	4	150	B-106
2/0	M-1641	4	150	B-106
3/0	M-1642	17	200	B-106
4/0	M1643	17	200	B-106
250 kcmil	M-1644	17	200	B-106
300 kcmil	M-1645	17	250	B-106
350 kcmil	M-1646	6	2-150	B-107
500 kcmil	M-1648	6	2-200	B-107
750 kcmil	M-1649	6	500	B-107
1000 kcmil	M-1650	6	3-200	B-107

NOTES:

For sizes not listed, contact BURNDY®
Molds listed are for concentric stranded cable; add suffix "-S" to mold number for solid conductors
For heavy duty molds, molds with wear plates or molds for Copperweld™ cable, contact BURNDY®
For expedited service, contact BURNDY®

Required Tools:

Handle Clamps - see chart for correct handle catalog number

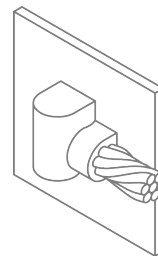
Recommended Accessories:

38-0309-00 Flint Ignitor
38-3922-00 Mold Cleaning Brush
38-0135-00 Cable Cleaning Brush
38-0330-00 Cable Clamp

Molds: Horiz. Tap Cable - Vert. Steel; Horiz. Cable Tap - Horiz. Cast Iron

Type CS-18 Molds Horizontal Tap Cable to Vertical Steel Surface

Type CS-18 Molds are used to connect a horizontal conductor to a vertical steel surface. Note that the cable is ON the surface. Size range is #6 through 500 kcmil solid or concentric stranded copper conductors. Contact BURNDY® for information on molds for conductors not listed below.



Cable Size	Mold Number	Price Key	Weld Metal	Handle Clamps
#6	M-5910	4	45	B-106
#4	M-2761	4	45	B-106
#1	M-6060	4	65	B-106
1/0	M-5419	4	90	B-106
2/0	M-2567	4	90	B-106
3/0	M-6072	4	115	B-106
4/0	M-9253	4	115	B-106
250 kcmil	M-2568	4	115	B-106
300 kcmil	M-6061	4	150	B-106
350 kcmil	M-6067	4	200	B-106
500 kcmil	M-8359	4	200	B-106

NOTES:

For sizes not listed, contact BURNDY®
 Molds listed are for concentric stranded cable; add suffix “-S” to mold number for solid conductors
 For heavy duty molds, molds with wear plates or molds for Copperweld™ cable, contact BURNDY®
 For expedited service, contact BURNDY®

Required Tools:

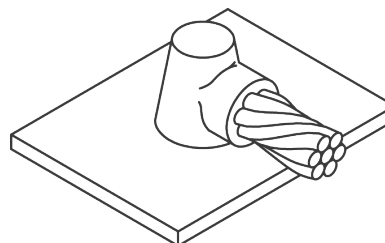
Handle Clamps - see chart for correct handle catalog number

Recommended Accessories:

- 38-0309-00** Flint Ignitor;
- 38-3922-00** Mold Cleaning Brush;
- 38-0135-00** Cable Cleaning Brush;
- 38-0330-00** Cable Clamp

Type CS-5 Molds Horizontal Cable Tap to Horizontal Cast Iron Surface

Type CS-5 Molds are used to join horizontal cable taps to horizontal cast iron surfaces. Note that the cable is ON the surface. Size range is #6 through #1 solid or concentric stranded copper conductors. Contact BURNDY® for information on molds for conductors not listed below.



Cable Size	Mold Number	Price Key	Weld Metal	Handle Clamps
#6 Sol	M-1613	3 ①	25Cl	Incl.
#6	M-1614	3 ①	25Cl	Incl.
#4 Sol	M-1615	3 ①	45Cl	Incl.
#4	M-1616	3 ①	45Cl	Incl.
#2 Sol	M-1617	3 ①	45Cl	Incl.
#2	M-1618	3 ①	45Cl	Incl.
#1 Sol	M-1619	3 ①	65Cl	Incl.
#1	M-1620	3 ①	65Cl	Incl.

DO NOT use Type CS-5 molds on Soil Pipe (ASTM A74-82). A test weld should be made on a section of pipe being used to determine the possibility of detrimental metallurgical effects.

① **38-0309-00** Flint ignitor included

NOTES:

For sizes not listed, contact BURNDY®
 Molds listed are for concentric stranded cable; add suffix “-S” to mold number for solid conductors
 For heavy duty molds, molds with wear plates or molds for Copperweld™ cable, contact BURNDY®
 For expedited service, contact BURNDY®

Required Tools:

Handle Clamps - see chart for correct handle catalog number

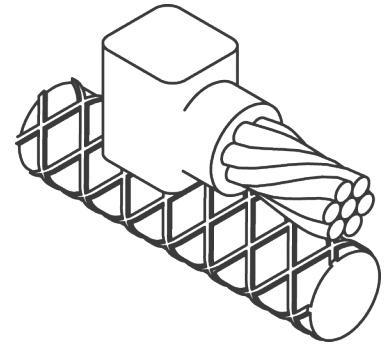
Recommended Accessories:

- 38-0309-00** Flint Ignitor
- 38-3922-00** Mold Cleaning Brush
- 38-0135-00** Cable Cleaning Brush
- 38-0330-00** Cable Clamp

Molds: Horizontal Parallel Tap to Rebar

Type CRE-1 Molds Horizontal Parallel Tap to Rebar

Type CRE-1 Molds are recommended for parallel, horizontal connections for solid or concentric stranded conductors #6 through 4/0 joined to reinforcing bars #3 through #6 and larger. The high copper content joint has a higher current carrying capacity than the conductors being joined and is impervious to vibration and moisture. Contact BURNDY® for information on molds for conductors not listed below.



Rebar Size	Cable Size	Mold Number	Packing Material	Price Key	Weld Metal	Handle Clamps
3	#6	M-7500	38-0329-00	4	25	B-106
	#4	M-7501	38-0329-00	4	32	B-106
	#2	M-7502	38-0329-00	4	45	B-106
	#1	M-7503	38-0329-00	4	65	B-106
	1/0	M-7504	38-0329-00	4	90	B-106
	2/0	M-7505	380-329-00	4	90	B-106
	3/0	M-7506	38-0329-00	4	115	B-106
4 & Larger	#6	M-7508	38-4061-00	3 ①	25	Incl.
	#4	M-7509	38-4061-00	3 ①	32	Incl.
	#2	M-7510	38-4061-00	3 ①	45	Incl.
	#1	M-7511	38-4061-00	3 ①	65	Incl.
4	1/0	M-7512	38-0329-00	4	90	B-106
	2/0	M-7513	38-0329-00	4	90	B-106
	3/0	M-7514	38-0329-00	4	115	B-106
	4/0	M-7515	38-0329-00	4	115	B-106
5	1/0	M-7520	38-0329-00	4	90	B-106
	2/0	M-7521	38-0329-00	4	90	B-106
	3/0	M-7522	38-0329-00	4	115	B-106
	4/0	M-7523	38-0329-00	4	115	B-106
6 & Larger	1/0	M-7528	38-4062-00	14+	90	Incl.
	2/0	M-7529	38-4062-00	14+	90	Incl.
	3/0	M-7530	38-4062-00	14+	115	Incl.
	4/0	M-7531	38-4062-00	14+	115	Incl.

PACKING MATERIAL NOTE

A packing pad is necessary when making thermOweld® connections to rebar. Packing material 38-032900 is copper shim stock. Packing material numbers 38-4061-00, 38-4062-00 and 38-4063-00 are a ceramic fiber material and can be used for one connection only. Be sure to specify packing material catalog number when ordering mold and weld metal.

NOTES:

For sizes not listed, contact BURNDY®
Molds listed are for concentric stranded cable; add suffix "-S" to mold number for solid conductors
For heavy duty molds, molds with wear plates or molds for Copperweld® cable, contact BURNDY®
For expedited service, contact BURNDY®

Required Tools:

Handle Clamps - see chart for correct handle catalog number

Recommended Accessories:

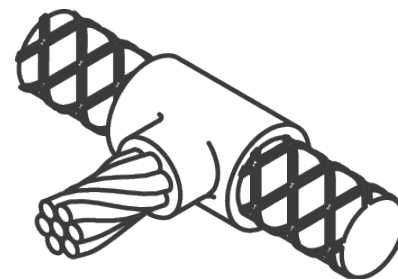
38-0309-00 Flint Ignitor
38-3922-00 Mold Cleaning Brush
38-0135-00 Cable Cleaning Brush
38-0330-00 Cable Clamp

① **38-0309-00** Flint ignitor included

Molds: Horizontal Cable Tap to Horizontal Rebar Run

Type CRE-2 Molds Horizontal Cable Tap to Horizontal Rebar Run

Type CRE-2 Molds are recommended for right angle, horizontal connections for solid or concentric stranded conductors #6 through 4/0 joined to reinforcing bars #3 through #6. The high copper content joint has a higher current carrying capacity than the conductors being joined and is impervious to vibration and moisture.



Rebar Size	Cable Size	Mold Number	Packing Material	Price Key	Weld Metal	Handle Clamps
3	#6	M-7588	38-0329-00	4	45	B-106
	#4	M-7589	38-0329-00	4	45	B-106
	#2	M-7590	38-0329-00	4	65	B-106
	#1	M-7591	38-0329-00	4	65	B-106
	1/0	M-7592	38-0329-00	4	90	B-106
	2/0	M-7593	38-0329-00	4	90	B-106
	3/0	M-7594	38-0329-00	4	115	B-106
	4/0	M-7595	38-0329-00	4	115	B-106
4	#6	M-7596	38-0329-00	4	45	B-106
	#4	M-7597	38-0329-00	4	45	B-106
	#2	M-7598	38-0329-00	4	65	B-106
	#1	M-7599	38-0329-00	4	65	B-106
	1/0	M-7600	38-0329-00	4	90	B-106
	2/0	M-7601	38-0329-00	4	90	B-106
	3/0	M-7602	38-0329-00	4	115	B-106
	4/0	M-7603	38-0329-00	4	115	B-106
5	#6	M-7604	38-0329-00	4	90	B-106
	#4	M-7605	38-0329-00	4	90	B-106
	#2	M-7606	38-0329-00	4	90	B-106
	#1	M-7607	38-0329-00	4	90	B-106
	1/0	M-7608	38-0329-00	4	115	B-106
	2/0	M-7609	38-0329-00	4	115	B-106
	3/0	M-7610	38-0329-00	4	150	B-106
	4/0	M-7611	38-0329-00	4	150	B-106
6	#6	M-7612	38-0329-00	4	90	B-106
	#4	M-7613	38-0329-00	4	90	B-106
	#2	M-7614	38-0329-00	4	90	B-106
	#1	M-7615	38-0329-00	4	90	B-106
	1/0	M-7616	38-0329-00	4	115	B-106
	2/0	M-7617	38-0329-00	4	115	B-106
	3/0	M-7618	38-0329-00	4	150	B-106
	4/0	M-7619	38-0329-00	4	150	B-106

PACKING MATERIAL NOTE

A packing pad is necessary when making thermoweld® connections to rebar. Packing material 38-0329-00 is copper shim stock. Packing material numbers 38-4061-00, 38-4062-00 and 38-4063-00 are a ceramic fiber material and can be used for one connection only. Be sure to specify packing material catalog number when ordering mold and weld metal.

NOTES:

For sizes not listed, contact BURNDY®
Molds listed are for concentric stranded cable; add suffix "-S" to mold number for solid conductors

For heavy duty molds, molds with wear plates or molds for Copperweld® cable, contact BURNDY®

For expedited service, contact BURNDY®

Required Tools:

Handle Clamps - see chart for correct handle catalog number

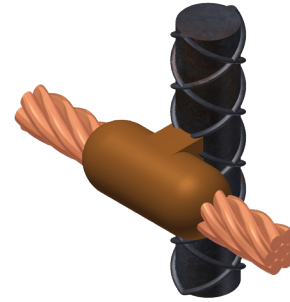
Recommended Accessories:

38-0309-00 Flint Ignitor
38-3922-00 Mold Cleaning Brush
38-0135-00 Cable Cleaning Brush
38-0330-00 Cable Clamp

Molds: Horizontal through Cable to Vertical Rebar

Type CRE-3 Molds Horizontal through Cable to Vertical Rebar

Type CRE-3 Molds are recommended for horizontal conductors to vertical rebar connections for solid or concentric stranded conductors #6 through 4/0 joined to reinforcing bars #3 through #7 & larger. The high copper content joint has a higher current carrying capacity than the conductors being joined and is impervious to vibration and moisture. Contact BURNDY® for information on molds for conductors not listed below.



Rebar Size	Cable Size	Mold Number	Packing Material	Price Key	Weld Metal	Handle Clamps
3	#6	M-7620	38-0329-00	24	90	B-106
	#4	M-7621	38-0329-00	24	90	B-106
	#2	M-7622	38-0329-00	24	90	B-106
	#1	M-7623	38-0329-00	24	115	B-106
	1/0	M-7624	38-0329-00	24	115	B-106
	2/0	M-7625	38-0329-00	24	115	B-106
	3/0	M-7626	38-0329-00	24	150	B-106
4	4/0	M-7627	38-0329-00	24	150	B-106
	#6	M-7628	38-0329-00	24	90	B-106
	#4	M-7629	38-0329-00	24	90	B-106
	#2	M-7630	38-0329-00	24	90	B-106
	#1	M-7631	38-0329-00	24	115	B-106
	1/0	M-7632	38-0329-00	24	115	B-106
	2/0	M-7633	38-0329-00	24	115	B-106
5	3/0	M-7634	38-0329-00	24	150	B-106
	4/0	M-7635	38-0329-00	24	150	B-106
	#6	M-7636	38-0329-00	24	90	B-106
	#4	M-7637	38-0329-00	24	90	B-106
	#2	M-7638	38-0329-00	24	90	B-106
	#1	M-7639	38-0329-00	24	115	B-106
	1/0	M-7640	38-0329-00	24	115	B-106
6	2/0	M-7641	38-0329-00	24	115	B-106
	3/0	M-7642	38-0329-00	24	150	B-106
	4/0	M-7643	38-0329-00	24	150	B-106
	#6	M-7644	38-0329-00	24	90	B-106
	#4	M-7645	38-0329-00	24	90	B-106
	#2	M-7646	38-0329-00	24	90	B-106
	#1	M-7647	38-0329-00	24	115	B-106
7 & Larger	1/0	M-7648	38-0329-00	24	115	B-106
	2/0	M-7649	38-0329-00	24	115	B-106
	3/0	M-7650	38-0329-00	24	150	B-106
	4/0	M-7651	38-0329-00	24	150	B-106
	#6	M-7652	38-4063-00	4	90	B-106-41
	#4	M-7653	38-4063-00	4	90	B-106-41
	#2	M-7654	38-4063-00	4	90	B-106-41
7 & Larger	#1	M-7655	38-4063-00	4	115	B-106-41
	1/0	M-7656	38-4063-00	4	115	B-106-41
	2/0	M-7657	38-4063-00	4	115	B-106-41
	3/0	M-7658	38-4063-00	4	150	B-106-41
	4/0	M-7659	38-4063-00	4	150	B-106-41

PACKING MATERIAL NOTE

A packing pad is necessary when making thermOweld® connections to rebar. Packing material 38-0329-00 is copper shim stock. Packing material numbers 38-4061-00, 38-4062-00 and 38-4063-00 are a ceramic fiber material and can be used for one connection only. Be sure to specify packing material catalog number when ordering mold and weld metal.

Rebar Size	Cable Size	Mold Number	Packing Material	Price Key	Weld Metal	Handle Clamps
6	#6	M-7644	38-0329-00	24	90	B-106
	#4	M-7645	38-0329-00	24	90	B-106
	#2	M-7646	38-0329-00	24	90	B-106
	#1	M-7647	38-0329-00	24	115	B-106
	1/0	M-7648	38-0329-00	24	115	B-106
	2/0	M-7649	38-0329-00	24	115	B-106
	3/0	M-7650	38-0329-00	24	150	B-106
7 & Larger	4/0	M-7651	38-0329-00	24	150	B-106
	#6	M-7652	38-4063-00	4	90	B-106-41
	#4	M-7653	38-4063-00	4	90	B-106-41
	#2	M-7654	38-4063-00	4	90	B-106-41
	#1	M-7655	38-4063-00	4	115	B-106-41
	1/0	M-7656	38-4063-00	4	115	B-106-41
	2/0	M-7657	38-4063-00	4	115	B-106-41
7 & Larger	3/0	M-7658	38-4063-00	4	150	B-106-41
	4/0	M-7659	38-4063-00	4	150	B-106-41

NOTES:

For sizes not listed, contact BURNDY®
 Molds listed are for concentric stranded cable; add suffix "-S" to mold number for solid conductors
 For heavy duty molds, molds with wear plates or molds for Copperweld® cable, contact BURNDY®
 For expedited service, contact BURNDY®

Required Tools:

Handle Clamps - see chart for correct handle catalog number

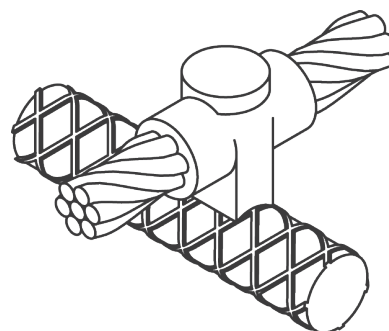
Recommended Accessories:

- 38-0309-00** Flint Ignitor
- 38-3922-00** Mold Cleaning Brush
- 38-0135-00** Cable Cleaning Brush
- 38-0330-00** Cable Clamp

Molds: Horizontal through Cable to Horizontal Rebar

Type CRE-4 Molds Horizontal through Cable to Horizontal Rebar

Type CRE-4 Molds are recommended for horizontal through conductors to horizontal rebar at right angle connections for solid or concentric stranded conductors #6 through 4/0 joined to reinforcing bars #3 through #6 & larger. The high copper content joint has a higher current carrying capacity than the conductors being joined and is impervious to vibration and moisture. Contact BURNDY® for information on molds for conductors not listed below.



Rebar Size	Cable Size	Mold Number	Packing Material	Price Key	Weld Metal	Handle Clamps
3	#6	M-7708	38-0329-00	4	65	B-106
	#4	M-7709	38-0329-00	4	65	B-106
	#2	M-7710	38-0329-00	4	90	B-106
	#1	M-7711	38-0329-00	4	90	B-106
	1/0	M-7712	38-0329-00	22	115	B-106
	2/0	M-7713	38-0329-00	22	115	B-106
	3/0	M-7714	38-0329-00	22	150	B-106
	4/0	M-7715	38-0329-00	22	150	B-106
4	#6	M-7716	38-0329-00	4	65	B-106
	#4	M-7717	38-0329-00	4	65	B-106
	#2	M-7718	38-0329-00	4	90	B-106
	#1	M-7719	38-0329-00	22	90	B-106
	1/0	M-7720	38-0329-00	22	115	B-106
	2/0	M-7721	38-0329-00	22	115	B-106
	3/0	M-7722	38-0329-00	22	150	B-106
	4/0	M-7723	38-0329-00	22	150	B-106
5	#6	M-7724	38-0329-00	4	65	B-106
	#4	M-7725	38-0329-00	4	65	B-106
	#2	M-7726	38-0329-00	4	90	B-106
	#1	M-7727	38-0329-00	22	90	B-106
	1/0	M-7728	38-0329-00	22	115	B-106
	2/0	M-7729	38-0329-00	22	115	B-106
	3/0	M-7730	38-0329-00	22	150	B-106
	4/0	M-7731	38-0329-00	22	150	B-106
6 & Larger	#6	M-7732	38-4061-00	14 ①	65	Incl.
	#4	M-7733	38-4061-00	14 ①	65	Incl.
	#2	M-7734	38-4061-00	14 ①	90	Incl.
	#1	M-7735	38-4061-00	14 ①	90	Incl.
	1/0	M-7736	38-4062-00	14 ①	115	Incl.
	2/0	M-7737	38-4062-00	14 ①	115	Incl.
	3/0	M-7738	38-4062-00	14 ①	150	Incl.
	4/0	M-7739	38-4062-00	14 ①	150	Incl.

PACKING MATERIAL NOTE

A packing pad is necessary when making thermOweld® connections to rebar. Packing material 38-0329-00 is copper shim stock. Packing material numbers 38-4061-00, 38-4062-00 and 38-4063-00 are a ceramic fiber material and can be used for one connection only. Be sure to specify packing material catalog number when ordering mold and weld metal.

NOTES:

For sizes not listed, contact BURNDY®
 Molds listed are for concentric stranded cable; add suffix "-S" to mold number for solid conductors
 For heavy duty molds, molds with wear plates or molds for Copperweld® cable, contact BURNDY®
 For expedited service, contact BURNDY®

Required Tools:

Handle Clamps - see chart for correct handle catalog number

Recommended Accessories:

38-0309-00 Flint Ignitor
38-3922-00 Mold Cleaning Brush
38-0135-00 Cable Cleaning Brush
38-0330-00 Cable Clamp

① 38-0309-00 Flint ignitor included

Molds: Horizontal Cable Tap to Vertical Rebar

Type CRE-6 Molds Horizontal Cable Tap to Vertical Rebar

Type CRE-6 Molds are recommended for horizontal conductors terminating at right angles to vertical rebar connections for solid or concentric stranded conductors #6 through 4/0 joined to reinforcing bars #3 through #7 and larger. The high copper content joint has a higher current carrying capacity than the conductors being joined and is impervious to vibration and moisture.

Contact BURNDY® for information on molds for conductors not listed below.



PACKING MATERIAL NOTE

A packing pad is necessary when making thermOweld® connections to rebar. Packing material 38-0329-00 is copper shim stock. Packing material numbers 38-4061-00, 38-4062-00 and 38-4063-00 are a ceramic fiber material and can be used for one connection only. Be sure to specify packing material catalog number when ordering mold and weld metal.

Rebar Size	Cable Size	Mold Number	Packing Material	Price Key	Weld Metal	Handle Clamps
3	#6	M-7884	38-0329-00	4	45	B-106
	#4	M-7885	38-0329-00	4	45	B-106
	#2	M-7886	38-0329-00	4	65	B-106
	#1	M-7887	38-0329-00	4	90	B-106
	1/0	M-7888	38-0329-00	4	115	B-106
	2/0	M-7889	38-0329-00	4	115	B-106
	3/0	M-7890	38-0329-00	4	150	B-106
4	4/0	M-7891	38-0329-00	4	150	B-106
	#6	M-7892	38-0329-00	4	45	B-106
	#4	M-7893	38-0329-00	4	65	B-106
	#2	M-7894	38-0329-00	4	65	B-106
	#1	M-7895	38-0329-00	4	90	B-106
	1/0	M-7896	38-0329-00	4	115	B-106
	2/0	M-7897	38-0329-00	4	115	B-106
	3/0	M-7898	38-0329-00	4	150	B-106
	4/0	M-7899	38-0329-00	4	150	B-106
5	#6	M-7900	38-0329-00	4	45	B-106
	#4	M-7901	38-0329-00	4	65	B-106
	#2	M-7902	38-0329-00	4	65	B-106
	#1	M-7903	38-0329-00	4	90	B-106
	1/0	M-7904	38-0329-00	4	115	B-106
	2/0	M-7905	38-0329-00	4	115	B-106
	3/0	M-7906	38-0329-00	4	150	B-106
	4/0	M-7907	38-0329-00	4	150	B-106

NOTES:

For sizes not listed, contact BURNDY®
 Molds listed are for concentric stranded cable; add suffix “-S” to mold number for solid conductors
 For heavy duty molds, molds with wear plates or molds for Copperweld® cable, contact BURNDY®
 For expedited service, contact BURNDY®

Required Tools:

Handle Clamps - see chart for correct handle catalog number

Rebar Size	Cable Size	Mold Number	Packing Material	Price Key	Weld Metal	Handle Clamps
6	#6	M-7908	38-0329-00	4	45	B-106
	#4	M-7909	38-0329-00	4	65	B-106
	#2	M-7910	38-0329-00	4	65	B-106
	#1	M-7911	38-0329-00	4	90	B-106
	1/0	M-7912	38-0329-00	4	115	B-106
	2/0	M-7913	38-0329-00	4	115	B-106
	3/0	M-7914	38-0329-00	4	150	B-106
	4/0	M-7915	38-0329-00	4	150	B-106
7 & Larger	#6	M-7916	38-4063-00	4	45	B-106-32 ①
	#4	M-7917	38-4063-00	4	65	B-106-32 ①
	#2	M-7918	38-4063-00	4	65	B-106-32 ①
	#1	M-7919	38-4063-00	4	90	B-106-32 ①
	1/0	M-7920	38-4063-00	4	115	B-106-32 ①
	2/0	M-7921	38-4063-00	4	115	B-106-32 ①
	3/0	M-7922	38-4063-00	4	150	B-106-32 ①
	4/0	M-7923	38-4063-00	4	150	B-106-32 ①

① The **B106-32** comes complete with a **B-106** handle clamp and **40-0106-76** vertical chain clamp. Although good for use on all sizes of rebar, vertical chain clamps are strongly recommended on large size rebar as they hold the mold to the rebar securely. If you already have a B-106 handle clamp, you can purchase the vertical chain clamps separately.

Recommended Accessories:

- 38-0309-00** Flint Ignitor
- 38-3922-00** Mold Cleaning Brush
- 38-0135-00** Cable Cleaning Brush
- 38-0330-00** Cable Clamp

thermOweld® Contact - GF No tamping or special tools required

thermOweld® Contact - GF

Contact - GF is an economical solution for areas with very difficult grounding issues. Contact - GF is highly conductive in a wet or dry application and does not require moisture to lower the resistance of your grounding system. Contact - GF contains a corrosion inhibitor which forms a film on copper, creating a barrier against corrosion. Contact - GF can be poured in dry or pumped in slurry form. No tamping required. It is very contractor friendly. No special tools required.

thermOweld® Contact - GF Advantages:

- Easy to install
- Electrically conductive
- Environmentally friendly
- Will not leach into the ground
- Positive low resistance, electrical connection to earth
- Does not contain any hazardous chemicals
- Compatible with all copper grounding systems
- Contains a corrosion inhibitor to protect copper
- Will not expand or shrink
- Not affected by freezing
- Excellent shelf life
- Typical resistivity <10 Ohm-cm

Catalog Number	Description
38-6501-25	Contact - GF 25 lb
38-6501-50	Contact - GF 50 lb

Material Required per Linear Foot of Trench Width of Trench (inches)												
		4	6	8	10	12	14	16	18	20	22	24
Thickness of thermOweld® Contact - GF (Inches)	2	4.10	6.20	8.10	10.10	12.10	14.10	16.20	18.20	20.20	22.20	24.20
	3	6.20	9.30	12.10	15.20	18.20	21.20	24.20	27.30	30.30	33.30	36.40
	4	8.20	12.30	16.20	20.20	24.20	28.30	32.30	36.40	40.40	44.50	48.50
	5	10.30	15.40	20.20	25.30	30.30	35.40	40.40	45.50	50.60	55.60	60.60
	6	12.30	18.50	24.20	30.30	36.40	42.40	48.50	54.60	60.60	66.70	72.70
	7	14.40	21.60	28.30	35.40	42.40	49.50	56.60	63.70	70.70	77.80	84.90
	8	16.40	24.70	32.30	40.40	48.50	56.00	64.70	72.70	80.80	88.90	97.00
	9	18.50	27.80	36.40	45.50	54.60	63.70	72.70	81.80	90.90	100.00	109.10
	10	20.60	30.80	40.40	50.50	60.60	70.70	80.80	90.90	101.00	111.10	121.20

To calculate the pounds of material required to fill a trench:

- Determine desired thickness
- Move to the right on the chart above until you are under the known width of the trench - this number will be the weight of the material in lbs/linear ft
- Take this number and multiply by the length of the trench in feet; your answer will be the amount of Contact - GF material required to fill the trench to the desired level in pounds

Example:

Thickness = 6 inches
 Width of trench = 18 inches
 Answer = 54.6 lbs per linear ft (see table above)
 = 54.6 lbs per linear ft x 25 ft trench = 1,365 lbs of thermOweld® Contact - GF
 = Quantity of 28 50-lb bags of Contact - GF

Application Information for Vertical, Horizontal or Grid Construction

thermOweld® Contact - GF

Application Information

Vertical Installation

Drill or bore a hole the desired diameter and depth. Suspend ground electrode in center of hole to be filled. Pour Contact - GF until desired level is obtained. No tamping is required.

Dry Volume of thermOweld® Contact - GF vs. Hole Size		Ground Resistance Comparison of Bare Rod vs.	
Hole Size	Lbs. of Contact - GF Per Ft.	Hole Size with 5/8" x 10' Rod in Center of 15' Hole	Percent Resistance Compared to Rod Only (100%)
4"	6.5	4"	52%
6"	14.5	6"	47%
8"	25.8	8"	44%
10"	40.4	10"	42%
12"	58.1	12"	40%

Horizontal or Grid Construction ①

Pour into horizontal trench until level of ground wire is reached. Place ground wire. Pour additional Contact - GF until wire is covered to desired height. Cover with fill. No tamping required.

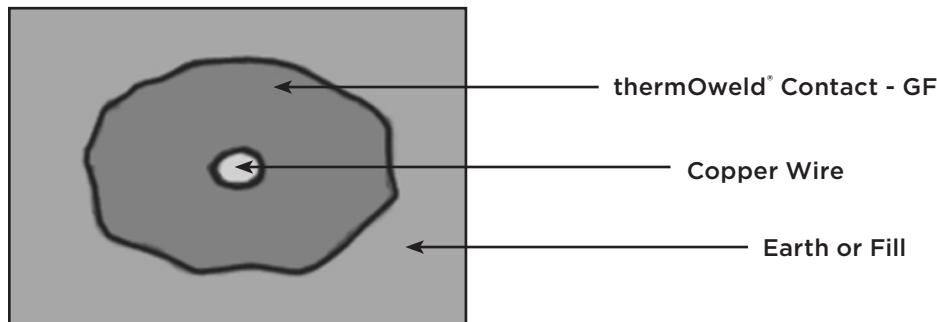
For grid construction, pour thermOweld® Contact - GF and spread over ground grid until desired thickness is achieved. Cover with fill.

Steady State Leakage Resistance ② Using 4/0 Copper Wire vs. thermOweld® Contact - GF					
Length	0.457" Diameter Wire Only	Percentage of Resistance with 0.457" Wire Plus Contact - GF in Various Diameters Compared to Wire Only (100%)			
		2"	3"	4"	6"
25'	100%	83%	78%	74%	69%
50'	100%	85%	81%	77%	73%
75'	100%	86%	82%	79%	75%
100'	100%	87%	83%	80%	77%
150'	100%	88%	84%	82%	78%
200'	100%	88%	85%	83%	79%
250'	100%	89%	85%	83%	80%
300'	100%	89%	86%	84%	80%

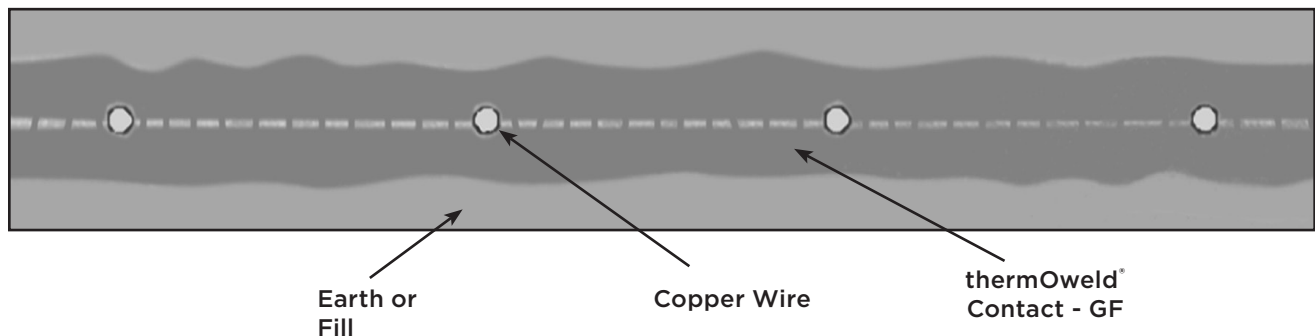
①Entire grounding system should be surrounded by thermOweld® Contact - GF. Conductors should be insulated as they exit Contact - GF column.

②The use of Contact - GF around the grounding system will also reduce surge impedance by increasing the effective contact area of the electrode to soil.

Horizontal Construction



Grid Construction

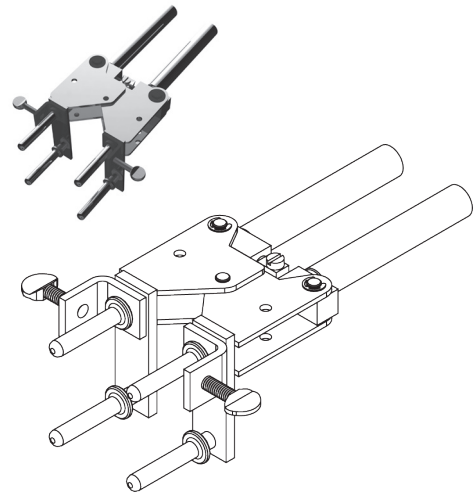


thermOweld® Handle Clamps, Handle Attachment, Mold Support Clamp

Handle Clamps

thermOweld® Handle Clamps make possible the use of many different sizes and types of molds with only two different clamps. The two handle clamps are catalog numbers **B-106** & **B-107**. These will fit 95% of all standard thermOweld® molds.

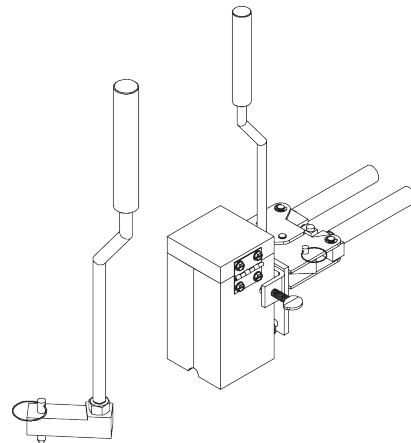
1. Use B-106 clamps for all molds having a price key 4, 7, 17, 22 or 24. These molds are a nominal 3 1/8" x 3 1/8" square.
2. Use B-107 clamps for all molds having a price key 5, 6, 8 or 23. These molds are a nominal 4" x 4" square.
3. All molds having a price key 2, 3, 9, 10, 11, 12, 14, 15 or 16 have an attached frame; separate handles are not required.



Handle Attachment

This Handle Attachment is used to hold Price Key 14 molds in position. It easily attaches to the B-106 Handle Clamp. This Handle Attachment can be used with weld types CRE-1 and CRE-4.

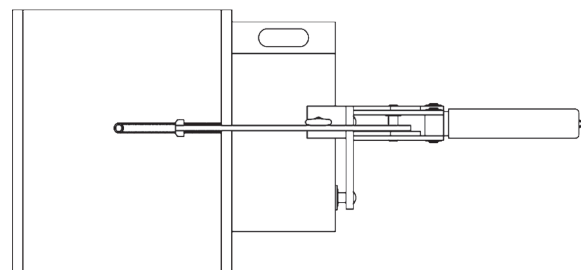
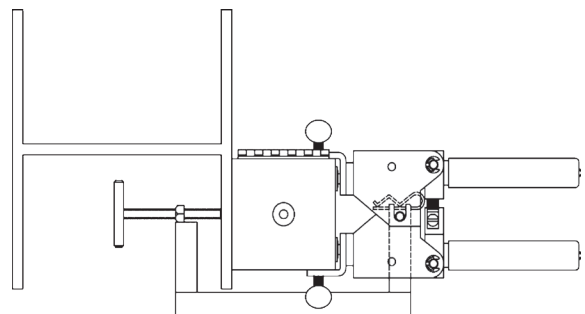
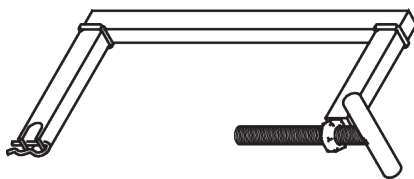
Catalog Number: 40-0106-75



Mold Support Clamp

Mold Support Clamp is used to hold a mold in position on a vertical steel column or angle. It is easily attached to the Handle Clamps. The Mold Support Clamp can be used with weld types CS-3, CS-18, CS-23 and CS-27.

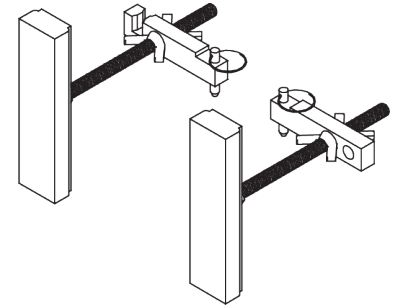
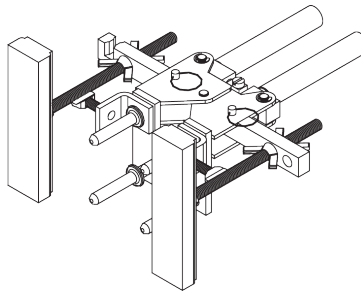
Catalog Number: 40-3657-00



Vertical Magnetic Clamps, Horizontal and Vertical Chain Clamps

Vertical Magnetic Clamps

Magnetic Clamps are used to hold a mold in position on a vertical steel surface. The magnetic clamp can be purchased complete with B-106 Handle Clamps or if you already have a set of handle clamps, you can order just the magnetic mounting assembly. The mounting assembly can easily be mounted on the prongs of your existing B-106 handle clamps. A minimum of 10" is required.

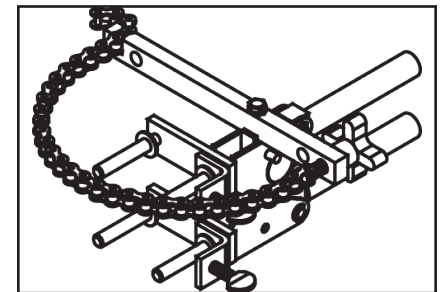
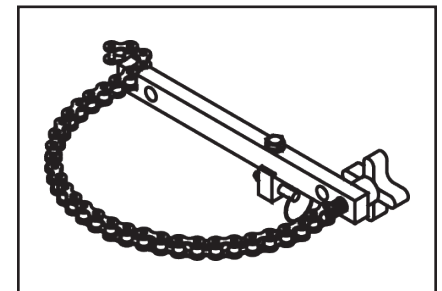
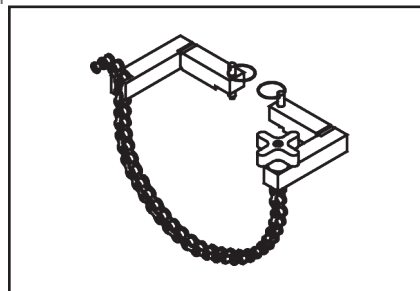
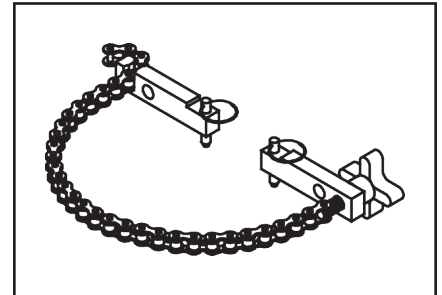
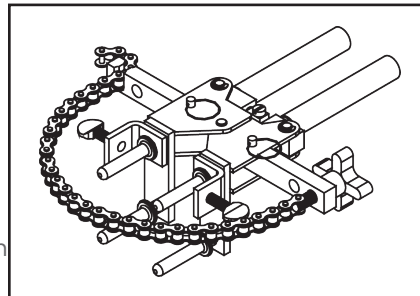


Magnetic Clamps with B-106 Handle		
Catalog Number	Fits Molds w/ Price Key	For Use with Weld Types
40-4431-00	4 & 17	CS-3, 4, 7 & 23

Magnetic Clamp Only		
Catalog Number	Fits Handle Clamps	For Use with Weld Types
40-4431-01	B-106 & B-107	CS-3, 4, 7 & 23

Horizontal and Vertical Chain Clamps

Chain Clamps are used to hold a mold in position on horizontal or vertical pipe up to 4" in diameter. For larger pipe a 20" chain extension is available to allow the chain clamps to be used on pipe up to 10" in diameter. The chain clamp can be purchased complete with B-106 or B-107 Handle Clamps or if you already have a set of handle clamps, you can order just the chain clamp and mounting assembly. The mounting assembly can easily be attached to your existing handle clamps.



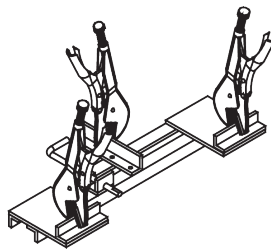
Chain Clamps			
Catalog Number	Fits Molds W/Price Key	For Use With Weld Types	Pipe Position
40-0106-32	4, 17, 22 & 24	CS-3, 4, 7, 23 & CRE-6	Vertical
40-0107-32	5, 6 & 23	CS-3, 4, 7 & 23	Vertical
40-0106-37	4, 17, 22 & 24	CS-1, 2, 5, 8 & 9	Horizontal
40-0106-41	4, 17	CS-6, 18 & CRE-3	Vertical

Chain Clamp Only (Handle Clamps Not Included)			
Catalog Number	Fits Handle Clamp	For Use With Weld Types	Pipe Position
40-0106-76	B-106 & B-107	CS-3, 4, 7, 23 & CRE-6	Vertical
40-0106-78	B-106 & B-107	CS-1, 2, 5, 8 & 9	Horizontal
40-0106-77	B-106 & B-107	CS-6, 18 & CRE-3	Vertical

thermOweld® Accessories

Cable Clamp

The thermOweld® Cable Clamp is recommended for holding a wide range of cables properly in place in molds when welding cables that are under tension. This prevents the cables from pulling out of the mold when the weld is made.



Cable Clamp: 38-0330-00

Cable Cleaning, Card Cloth Brush

The Cable Cleaning Brush is recommended for cleaning heavily oxidized cables. The V-shape brushes permit their use over a wide range of cable sizes. Brush assembly consists of a handle with two stiff wire bristle brushes that are rotatable, for longer life and are replaceable.



The Card Cloth Brush is used for cleaning large conductors and bus bar. It has short stiff bristles. These brushes are for cleaning cable only, not molds.

The Mold Cleaning Brush 38-3922-00 is used to clean the graphite mold without scratching the mold.

Description	Catalog Number
Cable Cleaning Brush	38-0305-00
Replacement Brush	38-0135-01
Card Cloth Brush	38-0306-00
Mold Cleaning Brush	38-3922-00



Mold Cleaners

Mold Cleaners are used to clean the slag from molds that are not split through the crucible.

40-0319-01 for cartridge sizes #15 through #65

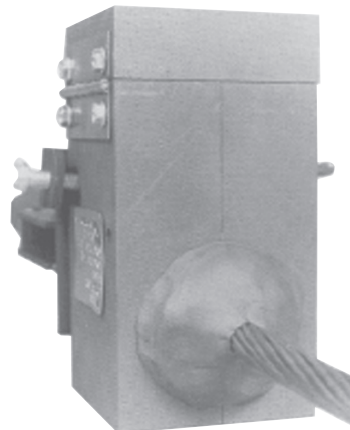
40-0319-03 for cartridge sizes #90 through #500



Packing Material

Packing material is used to prevent the molten weld metal from leaking out of the mold. When the cable opening becomes worn from heavy use, the packing material may be used to prolong mold use. It is also used around 7 strand cable to prevent leaking. Packing material comes in a 1 lb. or 5 lb. package.

Description	Catalog Number
1 lb. package	38-4129-00
5 lb. package	38-4129-05



Tool Kit



- 38-0302-00** Tool Kit with Tools Shown except Rasp
- 38-0302-02** Tool Kit with Tools Shown and Rasp
- 38-0303-00** Tool Box only



thermOweld® Tools

The **38-0309-00** Flint Ignitor is used to ignite the starting powder. Each mold that is sold with a frame has a Flint Ignitor included.

For added safety a Flint Ignitor extension is available, catalog number **38-0904-00**, that attaches to the **B38-0309-00** Flint Ignitor. This allows installers to stay approximately 36" away from the mold.

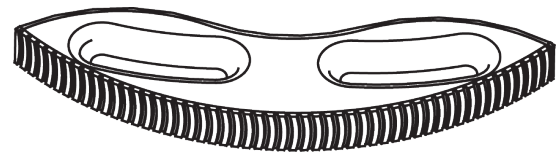
To order replacement flints, specify part number **38-0309-01**.

- 38-0309-00** Flint Ignitor
- 38-0304-00** 8" File
- 38-0307-00** Crimping Tool
- 38-3922-00** Mold Cleaning Brush
- 38-0308-00** 6" Screwdriver
- 38-0305-00** Wire Brush
- 38-0101-00** Rasp
- 38-0306-00** Card Cloth Brush

38-0101-00 Rasp

This tempered steel, curved rasp is recommended for removing rust and mill scale from steel and cast iron surfaces. The blade is replaceable. To order replacement rasp blade, specify catalog number **38-0101-01**.

Not recommended for use on galvanized surfaces.



38-0309-00 Flint Ignitor

The **38-0309-00** Flint Ignitor is used to ignite the starting powder. Each mold that is sold with a frame has a Flint Ignitor included. For added safety a Flint Ignitor extension is available, catalog number **38-0904-00**, that attaches to the **38-0309-00** Flint Ignitor. This allows installers to stay approximately 36" away from the mold.

To order replacement flints, specify part number **38-0309-01**



Ground Rod Driving Sleeves; Shim Stock and Adapter Sleeves

Ground Rod Driving Sleeves

Ground Rod Driving Sleeves are placed over the top of a ground rod while driving it into the ground. This prevents the top from mushrooming or flaring out. Ground rod driving sleeves are available in sizes to fit all standard unthreaded ground rods.

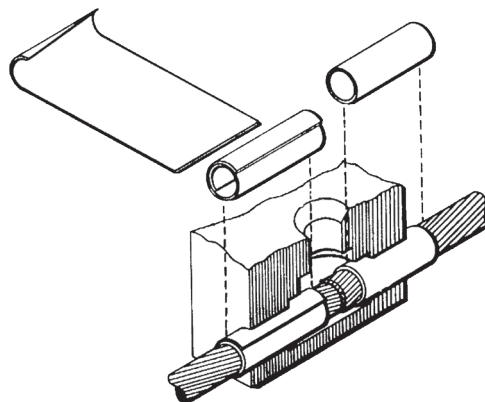


Catalog Number	For Use On
38-3662-01	1/2" Copper Clad or Steel Ground Rod
38-3662-02	5/8" Copper Clad Ground Rod
38-3662-05	5/8" Steel Ground Rod
38-3662-03	3/4" Copper Clad Ground Rod
38-3662-06	3/4" Steel Ground Rod
38-3662-04	1" Copper Clad Ground Rod

Shim Stock and Adapter Sleeves

thermOweld® molds designed for larger cable sizes can be used on smaller diameter cables if copper adapter sleeves or shim stock are utilized. The copper shim stock, .0108" x 1-1/2" x 3", is normally wrapped around cable until the diameter is about equal to the cable opening. A tight fit is not necessary as the shim stock will unwrap slightly and prevent leakage of weld metal.

To order shim stock use part number **38-0329-00**. Shim stock comes 100 pieces per box.



For Use on Cable Size		Part Number	Use in Mold Size	Sleeve Dimensions		
Stranded	Solid			O.D. Size	I.D.	Length
#12, #14	#10, #12, #14	38-0200-00	#6 Str. & Sol.	0.15	0.11	1.00
#9, #10	#8, #9, #10	38-0208-00	#4 Sol.	0.20	0.14	1.00
#7, #8, #10	#6, #8	38-0201-00	#4	0.22	0.17	1.00
#6	#5	38-0202-00	#2	0.29	0.19	1.00
#4, #5	#3, #4	38-0207-00	#2	0.30	0.24	1.00
#4	#2	38-0204-00	#1	0.34	0.24	1.00
#2	#1	38-0203-00	1/0	0.37	0.30	1.00
#1	1/0	38-0209-00	2/0	0.42	0.35	1.00
1/0, #1	2/0	38-0205-00	3/0 & 4/0 Sol.	0.46	0.38	1.00
2/0, 1/0	3/0	38-0240-00	4/0	0.52	0.43	1.50
4/0	—	38-0211-00	300 kcmil	0.62	0.54	1.25
250 kcmil	—	38-0212-00	350 kcmil	0.67	0.59	1.25
350, 400 kcmil	—	38-0213-00	500 kcmil	0.81	0.76	1.50
250, 300, 350 kcmil	—	38-0214-00	500 kcmil	0.81	0.70	1.50
750, 800 kcmil	—	38-0215-00	1000 kcmil	1.15	1.05	1.50

Cathodic Protection Horiz. Cable to Horiz. Steel Surface for AWG

Type CS-32 Cathodic Protection Molds

Horizontal Cable to Horizontal Steel Surface for AWG Conductors

NOTE: When Welding to Ductile Iron Pipe, use weld metal and molds specifically designed for cast iron.

Contact BURNDY® for information on molds for conductors not listed below.



Cable Size	Surface	Mold Number	Price Key	Weld Metal	Handle Clamps
#6 Sol †	Flat (4" & Larger Pipe)	M-100	3‡	15CP	Included
	3/4" to 3-1/2" Pipe	M-101	3‡	15CP	Included
#6	Flat (4" & Larger Pipe)	M-102	3‡	15CP	Included
	3/4" to 3-1/2" Pipe	M-103	3‡	15CP	Included
#4 Sol	Flat (6" & Larger Pipe)	M-104	3‡	15CP	Included
	3/4" to 3-1/2" Pipe	M-105	3‡	15CP	Included
	4" to 5" Pipe	M-130	3‡	15CP	Included
#4	Flat (6" & Larger Pipe)	M-106	3‡	15CP	Included
	3/4" to 3-1/2" Pipe	M-107	3‡	15CP	Included
	4" to 5" Pipe	M-108	3‡	15CP	Included
#2 Sol	Flat (10" & Larger Pipe)	M-109	3‡	25CP	Included
	1" to 3-1/2" Pipe	M-110	3‡	25CP	Included
	4" to 8" Pipe	M-111	3‡	25CP	Included
#2	Flat (10" & Larger Pipe)	M-112	3‡	32CP	Included
	1" to 3-1/2" Pipe	M-113	3‡	32CP	Included
	4" to 8" Pipe	M-114	3‡	32CP	Included
	10" to 14" Pipe	M-115	3‡	32CP	Included
#1	Flat (16" & Larger Pipe)	M-116	3‡	45CP	Included
	1-1/2" to 3-1/2" Pipe	M-117	3‡	45CP	Included
	4" to 8" Pipe	M-118	3‡	45CP	Included
	10" to 14" Pipe	M-119	3‡	45CP	Included
1/0	Flat (20" & Larger Pipe)	M-120	3‡	65CP	Included
	2-1/2" to 3-1/2" Pipe	M-121	3‡	65CP	Included
	4" to 8" Pipe	M-122	3‡	65CP	Included
	10" to 18" Pipe	M-123	3‡	65CP	Included
2/0	Flat (20" & Larger Pipe)	M-124	3‡	65CP	Included
	2-1/2" to 3-1/2" Pipe	M-125	3‡	65CP	Included
	4" to 8" Pipe	M-126	3‡	65CP	Included
	10" to 18" Pipe	M-127	3‡	65CP	Included

† - Sold complete with frame If frame not required, specify MOLD NUMBER followed by suffix "-G"

‡ - For Wire Size #14 to #10 Solid, 38-0200-00 Sleeve/Weld Required

Optional: Magnetic Mold Support, Catalog Number **40-7202-00**

NOTES:

For sizes not listed, contact BURNDY®

Molds listed are for concentric stranded cable; add suffix "-S" to mold number for solid conductors

For expedited service, contact BURNDY®

To order weld metal for use with EZ Lite Remote® insert TW before and EZ after weld metal number

Required Tools:

Handle Clamps - Included
38-0309-00 Flint Ignitor
38-EZLT-RU EZ Lite Remote®

Recommended Accessories:

40-0319-01 Mold Cleaner for cartridge sizes #15-#65
 (Price Key 3 Molds Only)
38-3922-00 Mold Cleaning Brush
38-0135-00 Cable Cleaning Brush
38-0101-00 Rasp
38-4129-00 Packing Material for 1/0 & Larger Molds

Optional:

40-7202-00 Magnetic Mold Support

Cathodic Protection Horiz. Cable to Horiz. Steel Pipe for Metric

Type CS-32 Cathodic Protection Molds

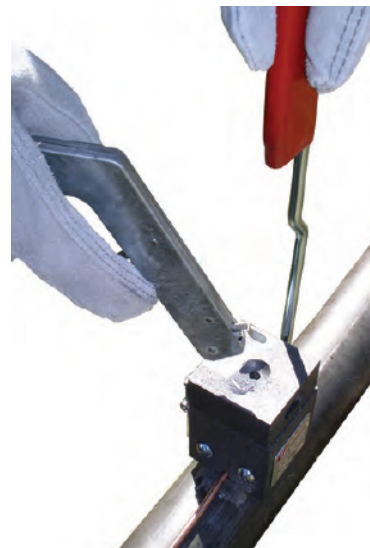
Horizontal Cable to Horizontal Steel Surface for Metric Conductors

APPLICATION NOTES: When specifying and applying thermOweld® products for cathodic protection of buried piping systems, it is the specifier and buyer's responsibility to respect the following ASME guidelines in conjunction with ASTM, NACE, and applicable country, state, municipality and local guidelines:

ASME B31.8-2000: "Gas Transmission and Distribution Piping Systems" 862.115 Para (b) 1 (steel pipe) 15 grams maximum weld metal cartridge

ASME B31.8-2000: "Gas Transmission and Distribution Piping Systems: 862.223 Para (a) (ductile / cast iron pipe) 32 grams maximum weld metal cartridge

Contact BURNDY® for information on molds for conductors not listed below.



Cable Size (mm2)	Pipe Dia. (mm2)	Mold Number	Price Key	Weld Metal	Handle Clamps
2.5, 4 & 6	up to 125	M-4146‡	3†	15CP	Included
	over 125	M-4147‡	3†	15CP	Included
10	up to 125	M-4148	3†	15CP	Included
	over 125	M-4149	3†	15CP	Included
16	up to 125	M-4146	3†	15CP	Included
	over 125	M-4147	3†	15CP	Included
25	up to 70	M-4152	3†	25CP	Included
	70 to 165	M-4153	3†	25CP	Included
	over 165	M-4154	3†	25CP	Included
30	up to 70	M-2833	3†	32CP	Included
	70 to 165	M-2834	3†	32CP	Included
	165 to 250	M-2835	3†	32CP	Included
	over 250	M-2836	3†	32CP	Included
35	up to 70	M-4155	3†	32CP	Included
	70 to 165	M-4156	3†	32CP	Included
	165 to 250	M-4157	3†	32CP	Included
	over 250	M-4158	3†	32CP	Included
50	up to 70	M-4159	3†	45CP	Included
	70 to 165	M-4160	3†	45CP	Included
	165 to 250	M-4161	3†	45CP	Included
	over 250	M-4162	3†	45CP	Included
70	up to 70	M-4163	3†	65CP	Included
	70 to 165	M-4164	3†	65CP	Included
	165 to 250	M-4165	3†	65CP	Included
	over 250	M-4166	3†	65CP	Included

NOTES:

For sizes not listed, contact BURNDY®

For expedited service, contact BURNDY®

To order weld metal for use with EZ Lite Remote® insert TW before and EZ after weld metal number

Required Tools:

- Handle Clamps - Included
- 38-0309-00** Flint Ignitor
- 38-EZLT-RU** EZ Lite Remote®

Recommended Accessories:

- 40-0319-01** Mold Cleaner for cartridge sizes #15-#65 (Price Key 3 Molds Only)
- 38-3922-00** Mold Cleaning Brush
- 38-0135-00** Cable Cleaning Brush
- 38-0101-00** Rasp
- 38-4129-00** Packing Material for 1/0 (50mm²) & Larger Molds

Optional:

- 40-7202-00** Magnetic Mold Support

† - Sold complete with frame If frame not required, specify MOLD NUMBER followed by suffix "-G"

‡ - 38-4590 Sleeve/Weld Required

Cathodic Protection Horiz. Cable to Horiz. Cast Iron AWG / Metric

Type CS-33 Cathodic Protection Molds

Horizontal Cable to Horizontal Cast Iron Surface for AWG Conductors

Welding to Horizontal Pipe: To weld to 4" to 24" horizontal pipe, add pipe size to mold number. Example: To weld #1 Str cable to 6" horizontal pipe, the mold number would be: M-163-6. To weld pipe 30" and larger, use flat surface mold.

Contact BURNDY® for information on molds for conductors not listed below.

DO NOT use Type CS-33 molds on Soil Pipe (ASTM A74-82). A test weld should be made on a section of the pipe being used to determine the possibility of detrimental metallurgical effects.



Cable Size	Surface	Mold Number	Price Key	Weld Metal	Handle Clamps
#6 Sol †	Flat (30" & Larger Pipe)	M-156	3†	25Cl	Included
#6	Flat (30" & Larger Pipe)	M-157	3†	45Cl	Included
#4 Sol	Flat (30" & Larger Pipe)	M-158	3†	45Cl	Included
#4	Flat (30" & Larger Pipe)	M-159	3†	45Cl	Included
#2 Sol	Flat (30" & Larger Pipe)	M-160	3†	45Cl	Included
#2	Flat (30" & Larger Pipe)	M-161	3†	45Cl	Included
#1	Flat (30" & Larger Pipe)	M-163	3†	65Cl	Included

† - Sold complete with frame If frame not required, specify MOLD NUMBER followed by suffix "-G"
 ‡ - For Wire Size #14 to #10 Solid, 38-0200-00 Sleeve/Weld Required

Required Tools:

- Handle Clamps - Included
- 38-0309-00** Flint Ignitor
- 38-EZLT-RU** EZ Lite Remote*

Recommended Accessories:

- 40-0319-01** Mold Cleaner for cartridge sizes #15-#65 (Price Key 3 Molds Only)
- 38-3922-00** Mold Cleaning Brush
- 38-0135-00** Cable Cleaning Brush
- 38-0101-00** Rasp
- 38-4129-00** Packing Material for 1/0 (50mm²) & Larger Molds

Optional:

- 40-7202-00** Magnetic Mold Support

Type CS-33 Cathodic Protection Molds

Horizontal Cable to Horizontal Cast Iron Surface for Metric Conductors

Welding to Horizontal Pipe: To weld to 4" to 24" horizontal pipe, add pipe size to mold number. Example: To weld #1 Str cable to 6" horizontal pipe, the mold number would be: M-163-6. To weld pipe 30" and larger, use flat surface mold.

Contact BURNDY® for information on molds for conductors not listed below.

DO NOT use Type CS-33 molds on Soil Pipe (ASTM A74-82). A test weld should be made on a section of the pipe being used to determine the possibility of detrimental metallurgical effects.

Cable Size (mm ²)	Pipe Dia (mm ²)	Mold Number	Price Key	Weld Metal	Handle Clamps
2.5, 4 & 6	Flat Surface or 750 mm ² and above pipe	M-4188‡	3†	25Cl	Included
10		M-10024	3†	25Cl	Included
16		M-10805	3†	45Cl	Included
25		M-4191	3†	45Cl	Included
35		M-4192	3†	45Cl	Included
50		M-4193	3†	45Cl	Included
70		M-2868	3†	65Cl	Included

† - Sold complete with frame If frame not required, specify MOLD NUMBER followed by suffix "-G"
 ‡ - 38-0200-00 Sleeve/Weld Required

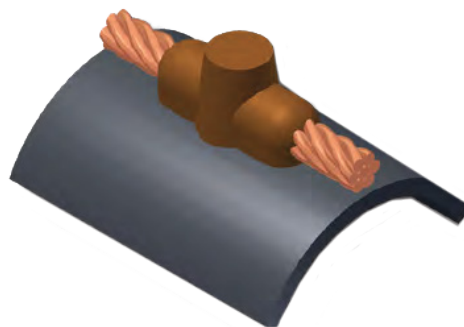
Cathodic Protection Horiz. Thru Cable to Horiz. Steel Surface for AWG

Type CS-34 Cathodic Protection Molds

Horizontal through Cable to Horizontal Steel Surface for AWG Conductors

NOTE: When Welding to Ductile Iron Pipe, use weld metal and molds specifically designed for cast iron.

Contact BURNDY® for information on molds for conductors not listed below.



Cable Size	Surface	Mold Number	Price Key	Weld Metal	Handle Clamps
#6 Sol †	Flat (12" & Larger Pipe)	M-1955	3	25CP	Included
	3/4" to 2" Pipe	M-5666	3	25CP	Included
	2-1/2" to 5" Pipe	M-3097	3	25CP	Included
	6" to 10" Pipe	M-3141	3	25CP	Included
#6	Flat (12" & Larger Pipe)	M-5661	3	25CP	Included
	3/4" to 2" Pipe	M-5662	3	25CP	Included
	2-1/2" to 5" Pipe	M-5663	3	25CP	Included
	6" to 10" Pipe	M-5664	3	25CP	Included
#4 Sol	Flat (12" & Larger Pipe)	M-1956	3	25CP	Included
	3/4" to 2" Pipe	M-1957	3	25CP	Included
	2-1/2" to 5" Pipe	M-1958	3	25CP	Included
	6" to 10" Pipe	M-1966	3	25CP	Included
#4	Flat (12" & Larger Pipe)	M-6000	3	25CP	Included
	3/4" to 2" Pipe	M-1967	3	25CP	Included
	2-1/2" to 5" Pipe	M-5501	3	25CP	Included
	6" to 10" Pipe	M-5503	3	25CP	Included
#2 Sol	Flat (14" & Larger Pipe)	M-5505	3	32CP	Included
	2" to 3-1/2" Pipe	M-5507	3	32CP	Included
	4" to 8" Pipe	M-5510	3	32CP	Included
	10" to 16" Pipe	M-5514	3	32CP	Included
#2	Flat (14" & Larger Pipe)	M-5518	3	45CP	Included
	2" to 3-1/2" Pipe	M-5986	3	45CP	Included
	4" to 8" Pipe	M-5605	3	45CP	Included
	10" to 16" Pipe	M-5988	3	45CP	Included
#1	Flat (18" & Larger Pipe)	M-5519	3	45CP	Included
	2" to 3-1/2" Pipe	M-5520	3	45CP	Included
	4" to 8" Pipe	M-5521	3	45CP	Included
	10" to 16" Pipe	M-5523	3	45CP	Included
1/0	Flat (30" & Larger Pipe)	M-5524	3	65CP	Included
	3" to 4" Pipe	M-5525	3	65CP	Included
	5" to 6" Pipe	M-5526	3	65CP	Included
	8" to 10" Pipe	M-5527	3	65CP	Included
	12" to 28" Pipe	M-5529	3	65CP	Included

Cable Size	Surface	Mold Number	Price Key	Weld Metal	Handle Clamps
2/0	Flat (30" & Larger Pipe)	M-6251	3	65CP	Included
	3" to 4" Pipe	M-5530	3	65CP	Included
	5" to 6" Pipe	M-5531	3	65CP	Included
	8" to 10" Pipe	M-5532	3	65CP	Included
	12" to 28" Pipe	M-5533	3	65CP	Included

† - For Wire Size #14 to #10 Solid (2) 38-4590 Sleeve/Weld Required

NOTES:

For sizes not listed, contact BURNDY®

For expedited service, contact BURNDY®

To order weld metal for use with EZ Lite Remote® insert TW before and EZ after weld metal number

Required Tools:

- Handle Clamps - Included
- 38-0309-00** Flint Ignitor
- 38-EZLT-RU** EZ Lite Remote®

Recommended Accessories:

- 40-0319-01** Mold Cleaner for cartridge sizes #15-#65 (Price Key 3 Molds Only)
- 38-3922-00** Mold Cleaning Brush
- 38-0135-00** Cable Cleaning Brush
- 38-0101-00** Rasp
- 38-4129-00** Packing Material for 1/0 (50mm²) & Larger Molds

Optional:

- 40-7202-00** Magnetic Mold Support



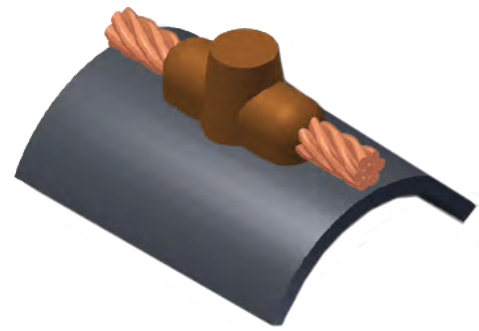
Cathodic Protection Horiz. Thru Cable to Horiz. Steel Surface for Metric

Type CS-34 Cathodic Protection Molds

Horizontal through Cable to Horizontal Steel Surface for Metric Conductors

NOTE: When Welding to Ductile Iron Pipe, use weld metal and molds specifically designed for cast iron.

Contact BURNDY® for information on molds for conductors not listed below.



Cable Size (mm ²)	Pipe Dia (mm ²)	Mold Number	Price Key	Weld Metal	Handle Clamps
2.5, 4 & 6	up to 105	M-4167 ‡	3 [†]	25CP	Included
	over 105	M-4168 ‡	3 [†]	25CP	Included
10	up to 105	M-10806	3 [†]	25CP	Included
	over 105	M-10807	3 [†]	25CP	Included
16	up to 105	M-10808	3 [†]	25CP	Included
	over 105	M-10809	3 [†]	25CP	Included
25	up to 70	M-4173	3 [†]	32CP	Included
	70 to 165	M-4174	3 [†]	32CP	Included
	over 165	M-4175	3 [†]	32CP	Included
35	up to 70	M-4176	3 [†]	45CP	Included
	70 to 165	M-4177	3 [†]	45CP	Included
	165 to 250	M-4178	3 [†]	45CP	Included
	over 250	M-4179	3 [†]	45CP	Included
50	up to 70	M-4180	3 [†]	65CP	Included
	70 to 165	M-4181	3 [†]	65CP	Included
	165 to 250	M-4182	3 [†]	65CP	Included
	over 250	M-4183	3 [†]	65CP	Included

[†] - Sold complete with frame If frame not required, specify MOLD NUMBER followed by suffix "-G"

[‡] - (2) 38-4590 Sleeve/Weld Required

Required Tools:

Handle Clamps - Included
38-0309-00 Flint Ignitor
38-EZLT-RU EZ Lite Remote*

Recommended Accessories:

40-0319-01 Mold Cleaner for cartridge sizes #15-#65
 (Price Key 3 Molds Only)
38-3922-00 Mold Cleaning Brush
38-0135-00 Cable Cleaning Brush
38-0101-00 Rasp
38-4129-00 Packing Material for 1/0 (50mm²) & Larger Molds

Optional:

40-7202-00 Magnetic Mold Support

Cathodic Protection Horiz. Thru Cable to Horiz. Cast Iron Pipe AWG/Metric

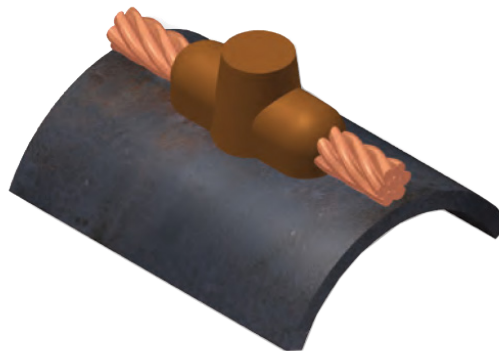
Type CS-35 Cathodic Protection Molds

Horizontal Through Cable to Horizontal Cast Iron Pipe for AWG Conductors

Welding to Horizontal Pipe: To weld to 4" to 24" horizontal pipe, add pipe size to mold number.
 Example: To weld #1 Str cable to 6" horizontal pipe, the mold number would be: M-163-6. To weld pipe 30" and larger, use flat surface mold.

Contact BURNDY® for information on molds for conductors not listed below.

DO NOT use Type CS-35 molds on Soil Pipe (ASTM A74-82). A test weld should be made on a section of the pipe being used to determine the possibility of detrimental metallurgical effects.



Cable Size	Surface	Mold Number	Price Key	Weld Metal	Handle Clamps
#6 Sol †	Flat (30" & Larger Pipe)	M-5316	3	32CI	Included
#6	Flat (30" & Larger Pipe)	M-5535	3	32CI	Included
#4 Sol	Flat (30" & Larger Pipe)	M-5536	3	45CI	Included
#4	Flat (30" & Larger Pipe)	M-5537	3	45CI	Included
#2 Sol	Flat (30" & Larger Pipe)	M-5538	3	45CI	Included
#2	Flat (30" & Larger Pipe)	M-5540	3	45CI	Included
#1	Flat (30" & Larger Pipe)	M-5542	3	65CI	Included

† - For Wire Size #14 to #10 Solid, (2) 38-0200-00 Sleeve/Weld Required

Required Tools:

Handle Clamps - Included
38-0309-00 Flint Ignitor
38-EZLT-RU EZ Lite Remote*

Recommended Accessories:

40-0319-01 Mold Cleaner for cartridge sizes #15-#65 (Price Key 3 Molds Only)
38-3922-00 Mold Cleaning Brush
38-0135-00 Cable Cleaning Brush
38-0101-00 Rasp
38-4129-00 Packing Material for 1/0 (50mm²) & Larger Molds

Optional:

40-7202-00 Magnetic Mold Support

Type CS-35 Cathodic Protection Molds

Horizontal Through Cable to Horizontal Cast Iron Pipe for Metric Conductors

Welding to Horizontal Pipe: To weld to 4" to 24" horizontal pipe, add pipe size to mold number.
 Example: To weld #1 Str cable to 6" horizontal pipe, the mold number would be: M-163-6. To weld pipe 30" and larger, use flat surface mold.

Contact BURNDY® for information on molds for conductors not listed below.

DO NOT use Type CS-35 molds on Soil Pipe (ASTM A74-82). A test weld should be made on a section of the pipe being used to determine the possibility of detrimental metallurgical effects.

Cable Size (mm ²)	Pipe Dia (mm ²)	Mold Number	Price Key	Weld Metal	Handle Clamps
2.5, 4 & 6	Flat Surface or 750 mm ² and larger pipe	M-2876‡	3†	32CI	Included
10		M-10810	3†	32CI	Included
16		M-10811	3†	45CI	Included
25		M-2884	3†	45CI	Included
35		M-2887	3†	45CI	Included
50		M-2889	3†	65CI	Included
70		M-2890	3†	65CI	Included

† - Sold complete with frame If frame not required, specify MOLD NUMBER followed by suffix "-G"
 ‡ - (2) 38-0200-00 Sleeve/Weld Required

C. P. Cable to Vert. Steel AWG / Angular to Vert. Steel Metric

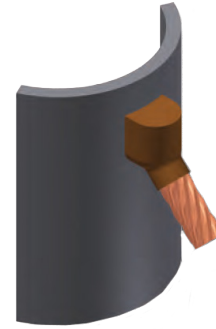
Type CS-36 Cathodic Protection Molds

Cable to Vertical Steel Surface for AWG Conductors

Welding to Horizontal Pipe: To weld to 4" to 24" horizontal pipe, add pipe size to mold number.
 Example: To weld #1 Str cable to 6" horizontal pipe, the mold number would be: M-163-6. To weld pipe 30" and larger, use flat surface mold.

Contact BURNDY® for information on molds for conductors not listed below.

Note: When Welding to Ductile Iron Pipe, use weld metal and molds designed for cast iron.



Required Tools:
 40-4565-00 Handle Clamps
 38-0309-00 Flint Ignitor or 38-EZLT-RU EZ Lite Remote*

Cable Size	Surface	Mold Number	Price Key	Weld Metal	Handle Clamps
#6 Sol ‡	Flat (12" & Larger Pipe)	M-142	18 †	15CP	40-4565-00
	3/4" to 3-1/2" Pipe	M-150	18 †	15CP	40-4565-00
	4" to 10" Pipe	M-151	18 †	15CP	40-4565-00
#6	Flat (12" & Larger Pipe)	M-144	18 †	15CP	40-4565-00
	3/4" to 3-1/2" Pipe	M-152	18 †	15CP	40-4565-00
	4" to 10" Pipe	M-153	18 †	15CP	40-4565-00
#4 Sol	Flat (12" & Larger Pipe)	M-145	18 †	15CP	40-4565-00
	3/4" to 1-1/2" Pipe	M-186	18 †	25CP	40-4565-00
	2" to 4" Pipe	M-187	18 †	25CP	40-4565-00
	5" to 10" Pipe	M-188	18 †	25CP	40-4565-00
#4	Flat (12" & Larger Pipe)	M-146	18 †	25CP	40-4565-00
	3/4" to 1-1/2" Pipe	M-189	18 †	25CP	40-4565-00
	2" to 4" Pipe	M-190	18 †	25CP	40-4565-00
	5" to 10" Pipe	M-191	18 †	25CP	40-4565-00
#2 Sol	Flat (14" & Larger Pipe)	M-147	18 †	25CP	40-4565-00
	1" to 1-1/2" Pipe	M-192	18 †	25CP	40-4565-00
	2" to 4" Pipe	M-193	18 †	25CP	40-4565-00
	5" to 12" Pipe	M-194	18 †	25CP	40-4565-00
#2	Flat (14" & Larger Pipe)	M-148	18 †	32CP	40-4565-00
	1" to 1-1/2" Pipe	M-195	18 †	32CP	40-4565-00
	2" to 3" Pipe	M-196	18 †	32CP	40-4565-00
	4" to 6" Pipe	M-197	18 †	32CP	40-4565-00
	8" to 12" Pipe	M-198	18 †	32CP	40-4565-00
#1	Flat (18" & Larger Pipe)	M-6117	19 †	45CP	40-4565-00
	1-1/2" to 2-1/2" Pipe	M-6118	19 †	45CP	40-4565-00
	3" to 4" Pipe	M-6119	19 †	45CP	40-4565-00
	5" to 10" Pipe	M-6120	19 †	45CP	40-4565-00
	12" to 16" Pipe	M-6121	19 †	45CP	40-4565-00

† - Sold complete with frame If frame not required, specify MOLD NUMBER followed by suffix "-G"

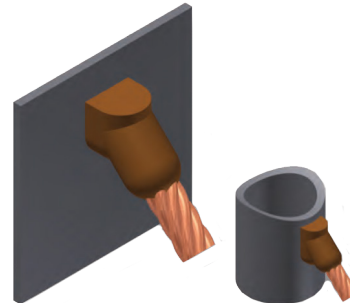
‡ - For Wire Size #14 to #10 Solid, 38-0200-00 Sleeve/Weld Required

Type CS-36 Cathodic Protection Molds

Angular Cable Drop to Vertical Steel Surface for Metric Conductors

Note: For connections to Pipe contact BURNDY®

Contact BURNDY® for information on molds for conductors not listed below.



Note: For connections to Pipe contact BURNDY®

Cable Size (mm²)	Mold Number	Price Key	Weld Metal	Handle Clamps
10	M-10721	18 †	15CP	40-4565-00
16	M-10722	18 †	25CP	40-4565-00
25	M-4274	18 †	32CP	40-4565-00
30	M-10723	18 †	32CP	40-4565-00
35	M-9878	18 †	32CP	40-4565-00
50	M-10724	18 †	65CP	40-4565-00
70	M-10725	18 †	65CP	40-4565-00

† - Sold complete with frame If frame not required, specify MOLD NUMBER followed by suffix "-G"

Required Tools:
 40-4565-00 Handle Clamps
 38-0309-00 Flint Ignitor or 38-EZLT-RU EZ Lite Remote*

C.P. Cable Vert. Cast Iron Pipe AWG / Ang. Cable Vert. Cast Iron Metric

Type CS-37 Cathodic Protection Molds

Cable to Vertical Cast Iron Pipe for AWG Conductors

Welding to Vertical Pipe (CS-37 Only): To weld to 4" to 24" vertical pipe, add pipe size to mold number.
 Example: To weld #1 Str cable to 6" horizontal pipe, the mold number would be: M-2597-V6. To weld pipe 30" and larger, use flat surface mold.

Contact BURNDY® for information on molds for conductors not listed below.

DO NOT use Type CS-37 molds on Soil Pipe (ASTM A74-82). A test weld should be made on a section of the pipe being used to determine the possibility of detrimental metallurgical effects.



Cable Size	Surface	Mold Number	Price Key	Weld Metal	Handle Clamps
#6 Sol †	Flat (30" & Larger Pipe)	M-2594-S	18 †	25Cl	40-4565-00
#6	Flat (30" & Larger Pipe)	M-2594	18 †	32Cl	40-4565-00
#4 Sol	Flat (30" & Larger Pipe)	M-2595-S	18 †	45Cl	40-4565-00
#4	Flat (30" & Larger Pipe)	M-2595	18 †	45Cl	40-4565-00
#2 Sol	Flat (30" & Larger Pipe)	M-2596-S	19 †	45Cl	40-4565-00
#2	Flat (30" & Larger Pipe)	M-2596	19 †	45Cl	40-4565-00
#1	Flat (30" & Larger Pipe)	M-2597	19 †	65Cl	40-4565-00

† - For Wire Size #14 to #10 Solid, 38-0200-00 Sleeve/Weld Required

Required Tools:

- 40-4565-00 Handle Clamps
- 38-0309-00 Flint Ignitor or 38-EZLT-RU EZ Lite Remote*

Recommended Accessories:

- 40-0319-01 Mold Cleaner for cartridge sizes #15-#65 (Price Key 3 Molds Only)
- 38-3922-00 Mold Cleaning Brush
- 38-0135-00 Cable Cleaning Brush
- 38-0101-00 Rasp
- 38-4129-00 Packing Material for 1/0 & Larger Molds

Optional:

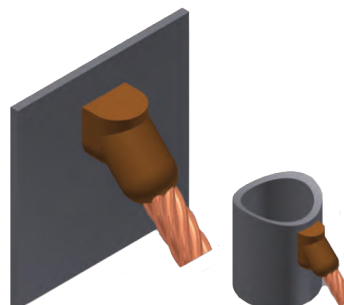
- 40-7202-00 Magnetic Mold Support

Type CS-36 Cathodic Protection Molds

Angular Cable Drop to Vertical Steel Surface for Metric Conductors

Note: For connections to Pipe contact BURNDY®

Contact BURNDY® for information on molds for conductors not listed below.



Note: For connections to Pipe contact BURNDY®

Cable Size (mm²)	Mold Number	Price Key	Weld Metal	Handle Clamps
10	M-10726	18	45Cl	40-4565-00
16	M-10727	18	45Cl	40-4565-00
25	M-10728	18	45Cl	40-4565-00
30	M-10729	18	45Cl	40-4565-00
35	M-10730	18	45Cl	40-4565-00
8 mm Ø	M-10731	18	65Cl	40-4565-00
50	M-10732	18	65Cl	40-4565-00
10 mm Ø	M-10733	18	65Cl	40-4565-00
70	M-10734	18	(2) 45Cl	40-4565-00

DO NOT use Type CS-37 molds on Soil Pipe (ASTM A74-82). A test weld should be made on a section of the pipe being used to determine the possibility of detrimental metallurgical effects.

Required Tools:

- 40-4565-00 Handle Clamps
- 38-0309-00 Flint Ignitor or 38-EZLT-RU EZ Lite Remote*

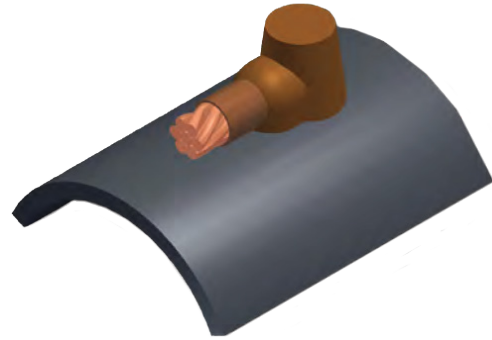
Cathodic Protection Field-Made Bond to Horiz. Steel Surface - AWG

Type CS-48 Cathodic Protection Molds

Field-Made Bond to Horizontal Steel Surface for AWG Conductors

DO NOT use Type CS-49 molds on Soil Pipe (ASTM A74-82). A test weld should be made on a section of the pipe being used to determine the possibility of detrimental metallurgical effects.

Contact BURNDY® for information on molds for conductors not listed below.



Cable Size	Surface - Steel Pipe	Mold Number	Price Key	Weld Metal	Copper Adapter Sleeves	Hammer Die	Handle Clamps
#8	4" Pipe	M-11379	3 [†]	15CP	38-0201-00	38-6019-00	Included
	6" to 8" Pipe	M-11380	3 [†]	15CP			Included
	10" & Large Pipe	M-7339	3 [†]	15CP			Included
#6	4" Pipe	M-7343	3 [†]	15CP	38-0202-00	38-6020-00	Included
	6" to 8" Pipe	M-7344	3 [†]	15CP			Included
	10" & Large Pipe	M-7342	3 [†]	15CP			Included
#4	4" Pipe	M-7346	3 [†]	25CP	38-0204-00	38-4859-00	Included
	6" to 8" Pipe	M-7347	3 [†]	25CP			Included
	10" & Large Pipe	M-7345	3 [†]	25CP			Included
#2	4" Pipe	M-7336	3 [†]	25CP	38-0203-00	38-0310-00	Included
	6" to 8" Pipe	M-131	3 [†]	25CP			Included
	10" & Large Pipe	M-129	3 [†]	25CP			Included
#1	4" Pipe	M-7349	3 [†]	32CP	38-0209-00	38-0392-00	Included
	6" to 8" Pipe	M-7350	3 [†]	32CP			Included
	10" & Large Pipe	M-7348	3 [†]	32CP			Included
1/0	4" Pipe	M-7337	3 [†]	32CP	38-0205-00	38-0311-00	Included
	6" to 8" Pipe	M-134	3 [†]	32CP			Included
	10" & Large Pipe	M-132	3 [†]	32CP			Included
2/0	4" Pipe	M-7338	3 [†]	45CP	38-0240-00	38-0312-00	Included
	6" to 8" Pipe	M-137	3 [†]	45CP			Included
	10" & Large Pipe	M-135	3 [†]	45CP			Included

Required Tools:

Handle Clamps - Included
38-0309-00 Flint Ignitor
38-EZLT-RU EZ Lite Remote*

Recommended Accessories:

40-0319-01 Mold Cleaner for cartridge sizes #15-#65 (Price Key 3 Molds Only)
38-3922-00 Mold Cleaning Brush
38-0135-00 Cable Cleaning Brush
38-0101-00 Rasp
38-4129-00 Packing Material for 1/0 (50mm²) & Larger Molds

Optional:

40-7202-00 Magnetic Mold Support

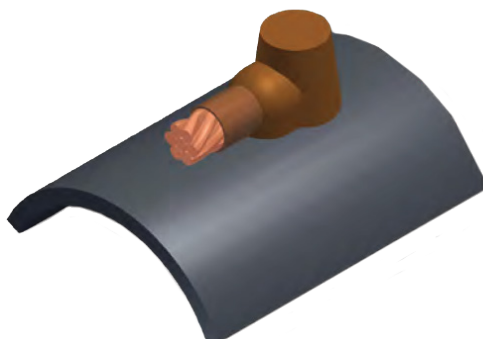
Cathodic Protection Field-Made Bond to Cast Iron Surface - AWG

Type CS-49 Cathodic Protection Molds

Field-Made Bond to Cast Iron Surface for AWG Conductors

DO NOT use Type CS-49 molds on Soil Pipe (ASTM A74-82). A test weld should be made on a section of the pipe being used to determine the possibility of detrimental metallurgical effects.

Contact BURNDY for information on molds for conductors not listed below.



Cable Size	Surface - Steel Pipe	Mold Number	Price Key	Weld Metal	Copper Adapter Sleeves	Hammer Die	Handle Clamps
#8	4" to 24" Pipe: Replace P.S. with Pipe Size (Ex. M-7351-4 for 4" Pipe)	M-7351-PS.	3 †	25Cl	38-0201-00	38-6019-00	Included
	30" & Larger Pipe	M-7351	3 †	25Cl			Included
#6	4" to 24" Pipe: Replace P.S. with Pipe Size (Ex. M-7351-4 for 4" Pipe)	M-7352-PS.	3 †	25Cl	38-0202-00	38-6020-00	Included
	30" & Larger Pipe	M-7352	3 †	25Cl			Included
#4	4" to 24" Pipe: Replace P.S. with Pipe Size (Ex. M-7351-4 for 4" Pipe)	M-154-PS.	3 †	32Cl	38-0204-00	38-4859-00	Included
	30" & Larger Pipe	M-154	3 †	32Cl			Included
#2	4" to 24" Pipe: Replace P.S. with Pipe Size (Ex. M-7351-4 for 4" Pipe)	M-175-PS.	3 †	32Cl	38-0203-00	38-0310-00	Included
	30" & Larger Pipe	M-175	3 †	32Cl			Included
#1	4" to 24" Pipe: Replace P.S. with Pipe Size (Ex. M-7351-4 for 4" Pipe)	M-7354-PS.	3 †	45Cl	38-0209-00	38-0392-00	Included
	30" & Larger Pipe	M-7354	3 †	45Cl			Included
1/0	4" to 24" Pipe: Replace P.S. with Pipe Size (Ex. M-7351-4 for 4" Pipe)	M-5809-PS.	3 †	45Cl	38-0205-00	38-0311-00	Included
	30" & Larger Pipe	M-5908	3 †	45Cl			Included
2/0	4" to 24" Pipe: Replace P.S. with Pipe Size (Ex. M-7351-4 for 4" Pipe)	M-7355-PS.	3 †	45Cl	38-0240-00	38-0312-00	Included
	30" & Larger Pipe	M-7355	3 †	45Cl			Included

Required Tools:

Handle Clamps - Included
38-0309-00 Flint Ignitor
38-EZLT-RU EZ Lite Remote™

Recommended Accessories:

40-0319-01 Mold Cleaner for cartridge sizes #15-#65
(Price Key 3 Molds Only)
38-3922-00 Mold Cleaning Brush
38-0135-00 Cable Cleaning Brush
38-0101-00 Rasp
38-4129-00 Packing Material for 1/0 (50mm²) &
Larger Molds

Optional:

40-7202-00 Magnetic Mold Support

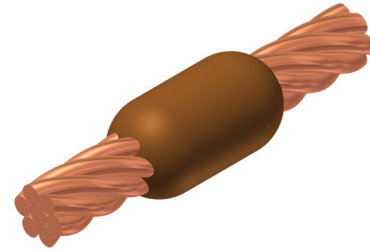
C.P. Horiz. End to End - AWG / Horiz. Tap to Horiz. Run - AWG

Type CC-1 Cathodic Protection Molds

Horizontal End to End for AWG Conductors

Contact BURNDY® for information on molds for conductors not listed below.

Cable Size	Mold Number	Price Key	Weld Metal	Handle Clamps
#12 Sol	M-8224-S	18	15	40-4565-00
#10 Sol	M-8225-S	18	15	40-4565-00
#8 Sol	M-8228-S	18	15	40-4565-00
#6 Sol	M-2229-S	18	25	40-4565-00
#6	M-2229	18	25	40-4565-00
#4 Sol	M-8232-S	18	25	40-4565-00
#4	M-8232	18	25	40-4565-00
#2 Sol	M-8235-S	18	32	40-4565-00
#2	M-8235	18	32	40-4565-00
#1	M-8239	18	32	40-4565-00
1/0	M-8242	18	45	40-4565-00
2/0	M-8244	18	65	40-4565-00



Notes:

To order weld metal for use with EZ Lite Remote® insert "TW" before and "EZ" after weld metal number

Required Tools:

40-4565-00 Handle Clamps - Included
38-0309-00 Flint Ignitor or **38-EZLT-RU** EZ Lite Remote®

Recommended Accessories:

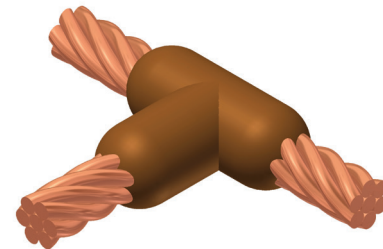
40-0319-01 Mold Cleaner for cartridge sizes #15-#65
40-0319-03 Mold Cleaner for cartridge sizes #90-#500
38-3922-00 Mold Cleaning Brush
38-0135-00 Cable Cleaning Brush
38-0101-00 Rasp
38-0330-00 Cable Clamp

Type CC-2 Cathodic Protection Molds

Horizontal Cable Tap to Horizontal Cable Run for AWG Conductors

Contact BURNDY® for information on molds for conductors not listed below.

Cable Size		Mold Number	Price Key	Weld Metal	Handle Clamps
Run	Tap				
#2	#2	M-8245	20	45	40-4565-00
	#4	M-8246	20	45	40-4565-00
#1	#1	M-8247	20	45	40-4565-00
	#2	M-8248	20	45	40-4565-00
	#4	M-8249	20	45	40-4565-00
1/0	#1	M-8250	20	45	40-4565-00
	#2	M-8251	20	45	40-4565-00
	#4	M-8252	20	45	40-4565-00
2/0	#1	M-8253	20	45	40-4565-00
	#2	M-8256	20	45	40-4565-00
	#4	M-8260	20	45	40-4565-00



Notes:

Molds listed are for concentric stranded cable. Add suffix "-S" to mold number for solid conductors

To order weld metal for use with EZ Lite Remote® insert "TW" before and "EZ" after weld metal number

Required Tools:

40-4565-00 Handle Clamps - Included
38-0309-00 Flint Ignitor or **38-EZLT-RU** EZ Lite Remote®

Recommended Accessories:

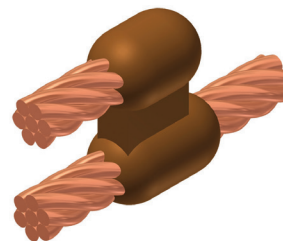
40-0319-01 Mold Cleaner for cartridge sizes #15-#65
40-0319-03 Mold Cleaner for cartridge sizes #90-#500
38-3922-00 Mold Cleaning Brush
38-0135-00 Cable Cleaning Brush
38-0101-00 Rasp
38-0330-00 Cable Clamp

thermOweld® Cathodic Protection Horiz. Parallel Tap - AWG

Type CC-6 Cathodic Protection Molds

Horizontal Parallel Tap for AWG Conductors

Contact BURNDY® for information on molds for conductors not listed below.



Cable Size		Mold Number	Price Key	Weld Metal	Handle Clamps	
Run	Tap					
#6	#6	M-8261	18	25	40-4565-00	
	#6 Sol	M-8264	18	25	40-4565-00	
	#8	M-8265	18	25	40-4565-00	
	#8 Sol	M-8266	18	25	40-4565-00	
#4	#4	M-8267	18	32	40-4565-00	
	#6	M-8268	18	32	40-4565-00	
	#6 Sol	M-8269	18	32	40-4565-00	
	#8	M-8274	18	32	40-4565-00	
#8 Sol	#8 Sol	M-8275	18	32	40-4565-00	
	#2	#2	M-8276	18	65	40-4565-00
		#4	M-8280	18	45	40-4565-00
		#6	M-8281	18	32	40-4565-00
#6 Sol		M-8283	18	32	40-4565-00	
#8		M-8284	18	32	40-4565-00	
#8 Sol		M-8285	18	32	40-4565-00	
#1	#2	M-8286	19	65	40-4565-00	
	#4	M-8287	19	45	40-4565-00	
	#6	M-8288	19	45	40-4565-00	
	#6 Sol	M-8291	19	45	40-4565-00	
	#8	M-8292	19	45	40-4565-00	
	#8 Sol	M-8293	19	45	40-4565-00	
1/0	#2	M-8295	19	65	40-4565-00	
	#4	M-8297	19	65	40-4565-00	
	#6	M-8299	19	45	40-4565-00	
	#6 Sol	M-8300	19	45	40-4565-00	
	#8	M-8301	19	45	40-4565-00	
	#8 Sol	M-8304	19	45	40-4565-00	
2/0	#2	M-8306	19	(2) 45	40-4565-00	
	#4	M-8307	19	65	40-4565-00	
	#6	M-8310	19	65	40-4565-00	
	#6 Sol	M-8311	19	65	40-4565-00	
	#8	M-8313	19	65	40-4565-00	
	#8 Sol	M-8316	19	65	40-4565-00	

Notes:

To order weld metal for use with EZ Lite Remote® insert "TW" before and "EZ" after weld metal number

Required Tools:

40-4565-00 Handle Clamps - Included

38-0309-00 Flint Ignitor or **38-EZLT-RU** EZ Lite Remote®

Recommended Accessories:

38-3922-00 Mold Cleaning Brush

38-0135-00 Cable Cleaning Brush

38-0330-00 Cable Clamp

thermOweld® Cathodic Protection Cable to Lug - AWG

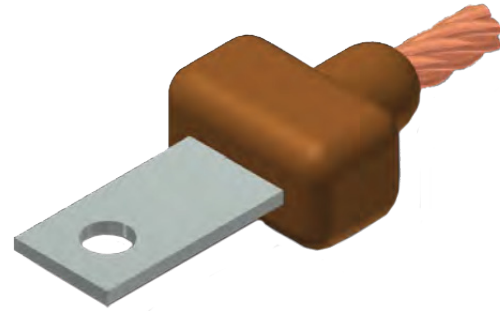
Type CB-1 Cathodic Protection Molds

Cable to Lug for AWG Conductors

Contact BURNDY® for information on molds for conductors not listed below.

Notes:

To order weld metal for use with EZ Lite Remote® insert "TW" before and "EZ" after weld metal number



Cable Size	Lug Size	Lug Part Number	Mold Number	Price Key	Weld Metal	Handle Clamps
#6 Sol †	1/16" x 1/2"	38-4709-00	M-8391-S	18 †	25	40-4565-00
#6	1/16" x 1/2"	38-4709-00	M-8391	18 †	25	40-4565-00
#4 Sol	1/16" x 1/2"	38-4709-00	M-8393-S	18 †	25	40-4565-00
#4	1/16" x 1/2"	38-4709-00	M-8393	18 †	25	40-4565-00
#2 Sol	1/16" x 1/2"	38-4709-00	M-8395-S	18 †	32	40-4565-00
#2	1/16" x 1/2"	38-4709-00	M-8395	18 †	32	40-4565-00
#1	1/16" x 1/2"	38-4709-00	M-8397	18 †	32	40-4565-00
1/0	1/16" x 1/2"	38-4709-00	M-8398	19 †	45	40-4565-00
2/0	1/8" x 1"	38-4200-00	M-8399	19 †	45	40-4565-00

† - Sold complete with frame If frame not required, specify MOLD NUMBER followed by suffix "-G"

‡ - For Wire Size #14 to #10 Solid, 38-0200-00 Sleeve/Weld Required

Required Tools:

40-4565-00 Handle Clamps - Included

38-0309-00 Flint Ignitor or **38-EZLT-RU** EZ Lite Remote®

Recommended Accessories:

38-3922-00 Mold Cleaning Brush

38-0135-00 Cable Cleaning Brush

thermOweld® Cathodic Protection Horiz. Cable to Ground Rod - AWG

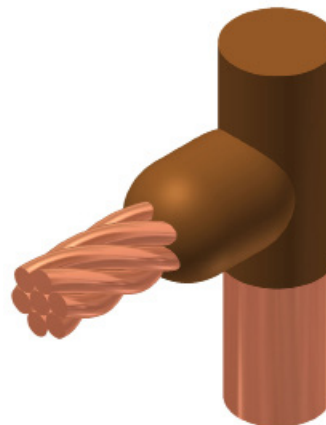
Type CR-1 Cathodic Protection Molds

Horizontal Cable to Ground Rod for AWG Conductors

Contact BURNDY® for information on molds for conductors not listed below.

Notes:

- .475" actual diameter. For full 1/2" (.500) ground rod and roll-threaded rod, add suffix "-N" to mold number (i.e. M-1965-N is a full 1/2" diameter ground rod or roll-threaded rod to 2/0 Str cable)
- .563" actual diameter. For full 5/8" (.625) ground rod and roll-threaded rod, add suffix "-N" to mold number (i.e. M-1973-N is full diameter 5/8" diameter ground rod or roll-threaded rod to 2/0 Str cable)
- .682" actual diameter. For full 3/4" (.750) ground rod and roll-threaded rod, add suffix "-N" to mold number (i.e. M-1981-N is full 3/4" diameter ground rod or roll-threaded rod to 2/0 Str cable)



Ground Rod Size	Cable Size	CR-1 Molds			
		Mold #	Price Key	Weld Metal	Handle Clamps
1/2"	#6 Sol ‡	M-1960-S	18	25	40-4565-00
	#6	M-1960	18	25	40-4565-00
	#4 Sol	M-1961-S	18	25	40-4565-00
	#4	M-1961	18	25	40-4565-00
	#2 Sol	M-1962-S	18	32	40-4565-00
	#2	M-1962	18	32	40-4565-00
	#1	M-1963	19	45	40-4565-00
	1/0	M-1964	19	65	40-4565-00
5/8"	#6 Sol ‡	M-1968-S	18	32	40-4565-00
	#6	M-1968	18	32	40-4565-00
	#4 Sol	M-1969-S	18	32	40-4565-00
	#4	M-1969	18	32	40-4565-00
	#2 Sol	M-1970-S	19	45	40-4565-00
	#2	M-1970	19	45	40-4565-00
	#1	M-1971	19	45	40-4565-00
	1/0	M-1972	19	65	40-4565-00
3/4"	#6 Sol ‡	M-1976-S	18	32	40-4565-00
	#6	M-1976	18	32	40-4565-00
	#4 Sol	M-1977-S	19	45	40-4565-00
	#4	M-1977	19	45	40-4565-00
	#2 Sol	M-1978-S	19	45	40-4565-00
	#2	M-1978	19	45	40-4565-00
	#1	M-1979	19	45	40-4565-00
	1/0	M-1980	19	65	40-4565-00
2/0	M-1981	19	65	40-4565-00	

Notes:

Molds listed are for copper clad ground rods

For welding to steel, stainless steel or galvanized steel ground rods add suffix "-N" to mold number

To order weld metal for use with EZ Lite Remote® insert "TW" before and "EZ" after weld metal number

Required Tools:

- 40-4565-00 Handle Clamps
- 38-0309-00 Flint Ignitor or 38-EZLT-RU EZ Lite Remote®

Recommended Accessories:

- 38-3922-00 Mold Cleaning Brush
- 38-0135-00 Cable Cleaning Brush
- 38-0304-00 File
- 38-0330-00 Cable Clamp

‡ - For Wire Size #14 to #10 Solid, (1) 38-0200-00 Sleeves Required

thermOweld® Cathodic Protection Horiz. Cable to Ground Rod - AWG

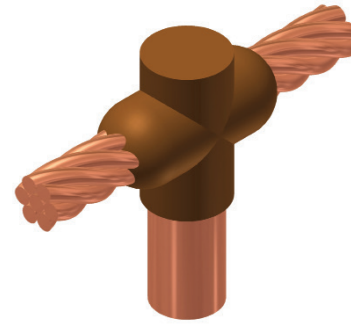
Type CR-2 Cathodic Protection Molds

Horizontal Cable to Ground Rod for AWG Conductors

Contact BURNDY® for information on molds for conductors not listed below.

Notes:

- .475" actual diameter. For full 1/2" (.500) ground rod and roll-threaded rod, add suffix "-N" to mold number (i.e. M-1965-N is a full 1/2" diameter ground rod or roll-threaded rod to 2/0 Str cable)
- .563" actual diameter. For full 5/8" (.625) ground rod and roll-threaded rod, add suffix "-N" to mold number (i.e. M-1973-N is full diameter 5/8" diameter ground rod or roll-threaded rod to 2/0 Str cable)
- .682" actual diameter. For full 3/4" (.750) ground rod and roll-threaded rod, add suffix "-N" to mold number (i.e. M-1981-N is full 3/4" diameter ground rod or roll-threaded rod to 2/0 Str cable)



Ground Rod Size	Cable Size	CR-2 Molds			
		Mold #	Price Key	Weld Metal	Handle Clamps
1/2"	#6 Sol †	M-1984-S	18	32	40-4565-00
	#6	M-1984	18	32	40-4565-00
	#4 Sol	M1985-S	18	32	40-4565-00
	#4	M-1985	18	32	40-4565-00
	#2 Sol	M1986-S	19	45	40-4565-00
	#2	M-1986	19	45	40-4565-00
	#1	M1987	19	65	40-4565-00
	1/0	M-1988	19	65	40-4565-00
5/8"	2/0	M-1989	19	65	40-4565-00
	#6 Sol †	M-1992-S	19	45	40-4565-00
	#6	M-1992	19	45	40-4565-00
	#4 Sol	M-1993-S	19	65	40-4565-00
	#4	M-1993	19	65	40-4565-00
	#2 Sol	M-1994-S	19	65	40-4565-00
	#2	M-1994	19	65	40-4565-00
	#1	M-1995	19	65	40-4565-00
3/4"	1/0	M-1996	20	(2) 45	40-4565-00
	2/0	M-1997	20	(2) 45	40-4565-00
	#6 Sol †	M-2000-S	19	45	40-4565-00
	#6	M-2000	19	45	40-4565-00
	#4 Sol	M-2001-S	19	65	40-4565-00
	#4	M-2001	19	65	40-4565-00
	#2 Sol	M-2002-S	19	65	40-4565-00
	#2	M-2002	19	65	40-4565-00
	#1	M-2003	19	65	40-4565-00
	1/0	M-2004	20	(2) 45	40-4565-00
	2/0	M-2005	20	(2) 45	40-4565-00

Notes:

- Molds listed are for copper clad ground rods
- For welding to steel, stainless steel or galvanized steel ground rods add suffix "-N" to mold number
- To order weld metal for use with EZ Lite Remote® insert "TW" before and "EZ" after weld metal number

† - For Wire Size #14 to #10 Solid, (2) 38-0200-00 Sleeves Required

Required Tools:

40-4565-00 Handle Clamps
38-0309-00 Flint Ignitor or **38-EZLT-RU** EZ Lite Remote®

Recommended Accessories:

38-3922-00 Mold Cleaning Brush
38-0135-00 Cable Cleaning Brush
38-0304-00 File
38-0330-00 Cable Clamp

thermOweld® Cathodic Protection CP Kit / Hammer Dies

CP KIT Cathodic Protection

Specialty kits are available for other infrastructure applications and unique contractor needs. Our trained staff is ready to help you with your cathodic protection project.



Each CP Kit Contains:				
Flat to 4" & Larger Pipe	3/4" to 3-1/2" & Larger Pipe	Flat 4" & Larger Pipe	Flat to 125mm ² & Larger Pipe	Flat to 125mm ² & Larger Pipe
(1) M-100 Mold	(1) M-101 Mold	(1) M-102 Mold	(1) M-4147 Mold	(1) M-4149 Mold
(80) 15CPS Cartridges*	(80) 15CPS Cartridges*	(80) 15CPS Cartridges*	(80) 15CPS Cartridges*	(80) 15CPS Cartridges*
Flint Ignitor	Flint Ignitor	Flint Ignitor	Flint Ignitor	Flint Ignitor
Mold Cleaner	Mold Cleaner	Mold Cleaner	Mold Cleaner	Mold Cleaner
Part #	Part #	Part #	Part #	Part #
38-4350-00	38-4351-00	38-7280-00	38-4518-00	38-8589-00

* - Sleeves are included in weld metal

Hammer Dies

Bonds can be made in the field using your own cable, a copper adapter sleeve and a hammer die.



Hammer Die Catalog Number	For Use On (Cable Size)	Adapter Sleeve Catalog Number
38-7292-00	#10 Str	38-0208-00
38-6019-00	#8 Str	38-0201-00
38-6020-00	#6 Str	38-0202-00
38-4859-00	#4 Str	38-0204-00
38-0310-00	#2 Str	38-0203-00
38-0392-00	#1 Str	38-0209-00
38-0311-00	1/0 Str	38-0205-00
38-0312-00	2/0 Str	38-0240-00

Cathodic Protection thermOcap PC®

thermOcap PC®

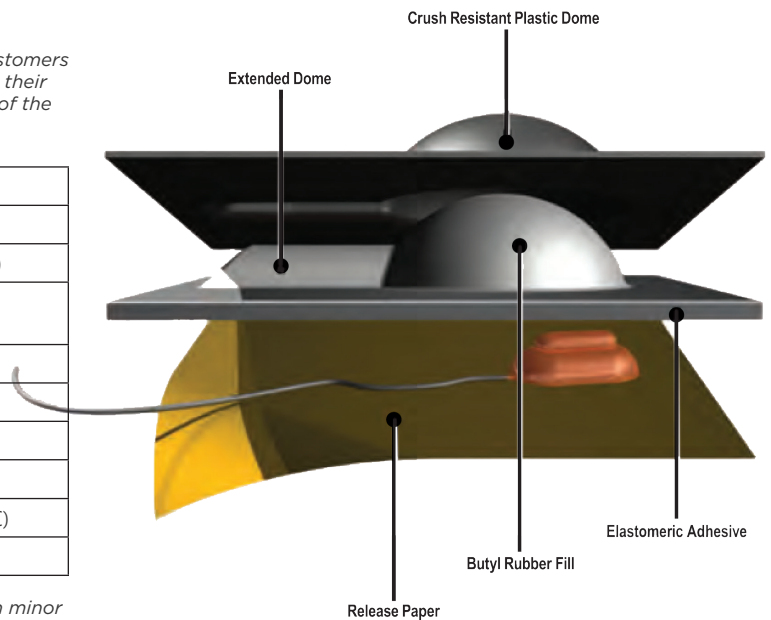
thermOcap PC® is designed to cover your cathodic protection wire connections on metal pipe and tanks.

- Thick outer shell designed to resist puncture
- Folds in plastic allow the cap to conform easier to the pipe
- Butyl rubber filled dome for added corrosion protection for the weld
- Superior resistance to aging shown through accelerated aging testing
- Adheres to Ductile Iron, Steel, Stainless Steel, Copper, Aluminum, PVC, PP, PE, FBE powder coating, natural and synthetic rubbers and Epoxy
- Outstanding shelf life, resistant to dry rot and cracking
- Packaged in boxes of 20
- Works with exothermic and brazed connections
- **Simply peel and stick!** - thermOcap PC® is designed to adhere without spray primer

Information contained in this document is for reference only. Customers are responsible for determination of this product's suitability for their application. No liability for any loss related to the use or misuse of the material contained herein is accepted.

Properties		thermOcap PC®
Part Number		38-6687-02
Dimensions	Overall	4" x 4" (102 mm x 102 mm)
	Dome	1.75" Dia. 0.75" tall (44.5 mm Dia. 19mm)
	Elastomeric Adhesive	0.125" thick (3.2mm)
	Plastic Backing	0.021" thick (0.5mm)
Primer Required?		No
Application Temperature		35°F to 150°F (2°C to 66°C)
Service Temperature		-20°F to 180°F (-29°C to 82°C)
*Adhesion to Steel		15 lb/in (26 N/cm)

* Determined per ASTM D1000/IEC 6045-2, testing method with minor deviations



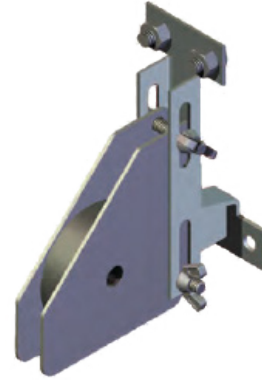
thermOweld® Cathodic Protection Magnetic Mold Support Assembly

Cathodic Protection Molds

with Magnetic Mold Support

New magnetic mold support is adaptable to all Price Key 3 molds.

- Designed for remote welding use with the EZ Lite Remote® ignition system
- Strong, 48 lb magnet holds mold in place and prevents leakage
- Adjustable height
- Works on both cast iron and steel pipe as well as flat surfaces
- Available as an accessory which can be attached to any existing Price Key 3 mold in your stock, on your truck, or at the jobsite



Catalog Number	Description
40-7202-00	Price Key 3 Mold Magnet Assembly
To order molds complete with Magnet Assembly, add suffix "-M" to mold number. Example: M-100-M	

