

# Straight Blade Devices



## Industrial Grade Extra Heavy Duty, Specification Grade Duplex Receptacles

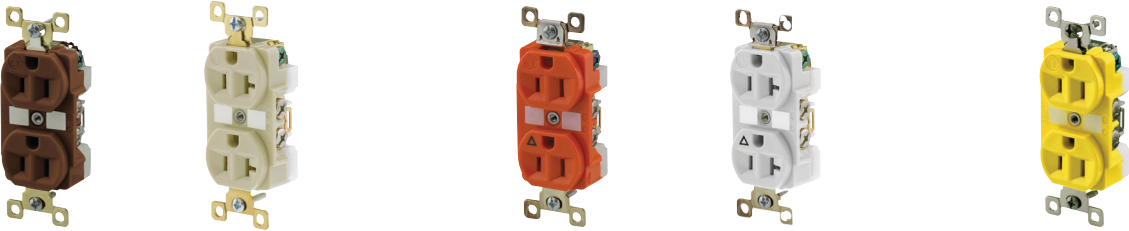


- Nylon construction with Circuit ID marking area
- Heavy duty nickel and brass plated steel wrap-around yoke
- Heavy duty, copper-alloy self-grounding system
- UL Listed, CSA Certified, Complies with NEMA® Standards WD-1 and WD-6, Listed to UL 498, Verified under Federal Specification WC596

### The BRY5362 Design

The one-piece ground system provides a more reliable continuity to ground than riveted designs. Triple-wipe brass line contacts deliver excellent conductivity for low resistance, low heat rise. Superior spring properties provide reliable, long-life blade retention. All nylon, wrap-around, full-face design provides secure assembly, even under stress.

### 15A and 20A 125V and 250V Receptacles, Back and Side Wired



Rating	Color	Duplex		Color	Isolated Ground		Color	Corrosion Resistant
		Standard	Weather Resistant		Standard	Weather Resistant		Standard
NEMA 5-15, 15A 125V 	Black	<b>BRY5262BLK</b>	<b>BRY5262BLKWR</b>	Brown Gray Ivory Orange White	<b>BRY5262IGB</b>	—	Brown Yellow	<b>BRY5262BCR</b>
	Blue	<b>BRY5262BU</b>	<b>BRY5262BUWR</b>		<b>BRY5262IGGRY</b>	<b>BRY5262IGGRYWR</b>		<b>BRY5262CR</b>
	Brown	<b>BRY5262</b>	<b>BRY5262WR</b>		<b>BRY5262IGI</b>	<b>BRY5262IGIWR</b>		
	Gray	<b>BRY5262GRY</b>	<b>BRY5262GRYWR</b>		<b>BRY5262IG</b>	<b>BRY5262IGWR</b>		
	Ivory	<b>BRY5262I</b>	<b>BRY5262IWR</b>		<b>BRY5262IGW</b>	<b>BRY5262IGWWR</b>		
	Red	<b>BRY5262RED</b>	<b>BRY5262REDWR</b>					
NEMA 5-20, 20A 125V 	Black	<b>BRY5362BLK</b>	<b>BRY5362BLKWR</b>	Brown Gray Ivory Orange White	<b>BRY5362IGB</b>	—	Yellow	<b>BRY5362CR</b>
	Blue	<b>BRY5362BU</b>	<b>BRY5362BUWR</b>		<b>BRY5362IGGRY</b>	<b>BRY5362IGGRYWR</b>		
	Brown	<b>BRY5362</b>	<b>BRY5362WR</b>		<b>BRY5362IGI</b>	<b>BRY5362IGIWR</b>		
	Gray	<b>BRY5362GRY</b>	<b>BRY5362GRYWR</b>		<b>BRY5362IG</b>	<b>BRY5362IGWR</b>		
	Ivory	<b>BRY5362I</b>	<b>BRY5362IWR</b>		<b>BRY5362IGW</b>	<b>BRY5362IGWWR</b>		
	Red	<b>BRY5362RED</b>	<b>BRY5362REDWR</b>					
NEMA 6-15, 15A 250V 	Black	<b>BRY5662BLK</b>	—	Orange	<b>BRY5662IG</b>	—	Yellow	<b>BRY5662CR</b>
	Brown	<b>BRY5662</b>	—					
	Gray	<b>BRY5662GRY</b>	—					
	Ivory	<b>BRY5662I</b>	—					
	Red	<b>BRY5662RED</b>	—					
	White	<b>BRY5662W</b>	—					
NEMA 6-20, 20A 250V 	Black	<b>BRY5462BLK</b>	—	Orange	<b>BRY5462IG</b>	—	Yellow	<b>BRY5462CR</b>
	Brown	<b>BRY5462</b>	—					
	Gray	<b>BRY5462GRY</b>	—					
	Ivory	<b>BRY5462I</b>	—					
	Red	<b>BRY5462RED</b>	—					
	White	<b>BRY5462W</b>	—					

Note: See page R-6 for weather resistant description.  
See page A-28 for technical specifications.

See Section C for isolated ground products.  
See page R-6 for weather resistant description.

See Section I for corrosion-resistant products.

### 15A and 20A 125V Specialty Receptacles

Inches (mm)

Rating	Description	Color	Catalog Number
NEMA 5-15, 15A 125V	BRY5262 on 4.0" (101.6) round metal box cover	Brown	<b>BRY5282</b>
NEMA 5-20, 20A 125V	BRY5362 on 4.0" (101.6) round metal box cover	Brown	<b>BRY5382</b>

NEMA® is a registered trademark of the National Electrical Manufacturers Association.



### Product Dimensions

Inches (mm)

A	4.06" (103.1)
B	3.28" (83.3)
C	1.54" (39.1)
D	1.16" (29.5)

