

# Locking Devices

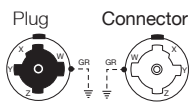
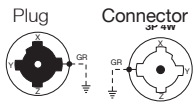


## 60 Amp Power Interrupting Devices

60A 600V AC, 3-Pole 4-Wire and 4-Pole 5-Wire Grounding Inches (mm)

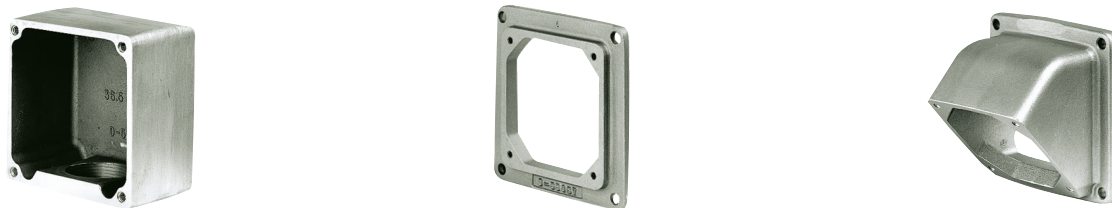


Rating	Poles/ Wires	Cord Diameter	Description	Plug	Connector	Flanged Devices Cast Aluminum		Receptacle*
						Male	Female	
60A 600V AC, Grounding	3-Pole 4-Wire	.920"-1.450" (23.4-36.8)	Yellow polycarbonate outer cover and adjustable cord grip	<b>26419</b>	<b>26418</b>	—	—	—
			Black phenolic with short aluminum housing and lift cover	—	—	—	—	<b>26410</b>
			Steel housing	—	—	<b>26422</b>	<b>26421</b>	—
60A 600V AC, Grounding	4-Pole 5-Wire	.920"-1.450" (23.4-36.8)	Blue polycarbonate outer cover and adjustable cord grip	<b>26519</b>	<b>26516</b>	—	—	—
			Black phenolic with long blue aluminum housing and lift cover	—	—	—	—	<b>26520</b>
			Steel housing	—	—	<b>26522</b>	<b>26521</b>	—



Note: \*For receptacles, use box and adapters below.  
See page H-27 for weather protective boots and accessories.

## 60A Power Interrupting Accessories



Single Receptacle Accessories Box and Adapters (Box requires one adapter), Cast Aluminum

Box	Straight Adapter Plate	45° Angle Adapter Plate
<b>26401</b>	<b>26402</b>	<b>26404</b>

## Product Dimensions Inches (mm)

	Plug	Connector	Single Receptacle	Flanged Inlets	
				Male	Female
A	3.56" (90.4)	5.43" (137.9)	4.62" (116.8)	4.12" (104.6)	4.12" (104.6)
B	3.03" (76.9)	3.18" (80.8)	2.87" (72.8)	2.70" (68.6)	2.88" (73.0)
C	1.09" (27.6)	1.09" (27.6)	3.50" (88.9)	1.20" (30.5)	1.20" (30.5)
D	—	—	3.57" (90.6)	2.75" (69.9)	3.33" (84.5)
E	—	—	1.84" (46.7)	90°	90°
F	—	—	3.26" (82.8)	0.19" (4.8)	0.19" (4.8)
G	—	—	2.56" (65.0)		

