



ECLIPSE JUNIOR LED

..... For Zone II and Industrial Applications



LED SOLUTIONS

..... For Harsh & Hazardous Locations



Quality, Reliability and Low Maintenance

Our LED Product Range

Chalmit has over a century's worth of experience in providing cutting edge lighting solutions to hazardous and marine markets. We understand the unique characteristics of LED technology and have a proven track record, pioneering the world's first Zone 1 LED luminaire; the NexLED back in 2005.

As a business we have invested in the development of solid state lighting technologies to provide solutions that meet the exacting requirements of the Oil, Gas, Renewables & Petrochemical industries.

The result is a proven, reliable and complete range of LED luminaires that compliment and enhance our fluorescent and HID products.

At the heart of each new design is our underlying philosophy - **Quality, Reliability and Low Maintenance.**



Made in Britain

Chalmit® products are designed and manufactured in the UK. We are proud to endorse and sustain a great tradition in engineering and innovation.



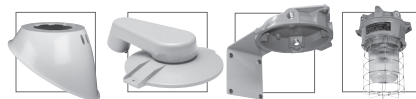
Follow us

ECLIPSE JUNIOR

A Compact LED Wellglass for Zone II and Industrial Areas



DESIGNED
IN BRITAIN



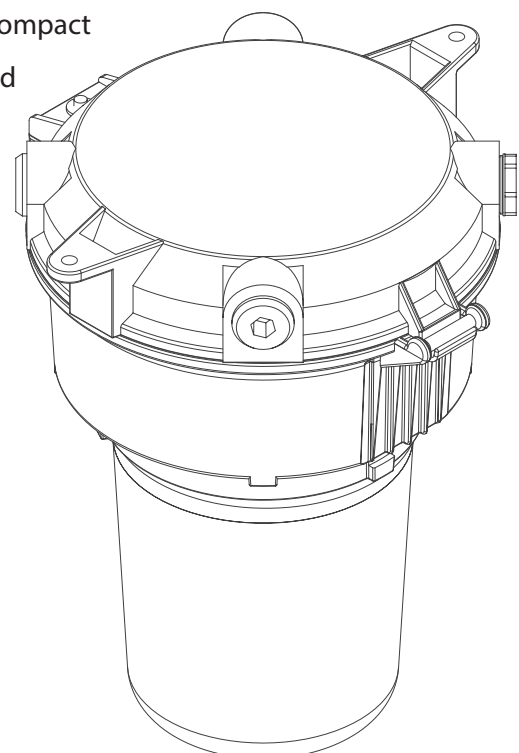
Compact, Low Maintenance, Reliable

The Eclipse Junior LED wellglass offers versatile, compact and low maintenance features for both Zone II and also Industrial applications. Its low profile design and range of mounting options provides an all round lighting solution in areas of limited space.

Features

The Eclipse Jr LED combines the low maintenance features of the popular Eclipse II wellglass with a compact design.

- Compact size and low weight
- Easy access for wiring and control gear
- Corrosion resistant
- Highly Energy Efficient





ECLIPSE JUNIOR

LED Lowbay

The **Eclipse Junior LED** offers all of the power of our popular Eclipse II Wellglass with a 40% reduction in weight. Featuring the latest in LED optics, the Eclipse Jr is a highly energy efficient luminaire for use in Zones 2 and 22.



Mounting Options

Pendant. Pole/Column. Medium Bay. Low Bay.

Standard Specification

Eclipse Junior LED Lowbay

Type of Protection	Ex ec (Increased Safety) Ex tc (Dust Protected Enclosure)
ATEX Classification	Group II Category 3 GD
Area Classification	Zone 2 and Zone 22 areas to EN 60079-10-1 and EN 60079-10-2 with installation to EN60079-14
Certificate	Type Examination Certificates Baseefa18ATEX0062X IECEX Certificate of Conformity IECEX BAS 18.0043X
Coding	Ex ec IIC Gc Ex tc IIIC Dc Refer to table for T Rating and Ambient
Enclosure	Painted aluminium body with glass globe
Entry	2 x M20 cable entries
Termination	3 core 6mm ² max. conductor with looping
Installation	Surface mounted
Control Gear	Electronic Driver
Colour Temperature (CCT)	5000K (Cool White)
Colour Rendering Index (Ra)	≥70
Maintenance	Barrel nut fastener
Ingress Protection	IP66
Surge Protection	4kV line to line, 6kV line to earth
Electrical Supply	110-277V AC 50/60Hz

Features

- ◆ Highly **Energy Efficient**
- ◆ **40% power savings** compared to equivalent 70W HPS lamps
- ◆ **Unique LED optic** providing uplight
- ◆ **40% more lightweight** than our Eclipse II alternative
- ◆ **Easy one bolt access** for installation
- ◆ **>100,000 maintenance free hours** at 25°C

Std. Cat No.	Delivered Output	Power Consumption	TClass	T°C (Dust)	Ambient °C	Weight
ECJN/05L/LE	4841 lm	45W	T5 T6	90	-40 to +40 -40 to +55	5.0kg

Options - Suffix to Catalogue No.

/PE	Pendant mounted version	/WM	Wall mount version
/ST	Stanchion mount version (to suit pole threaded 1¼ NPT)		

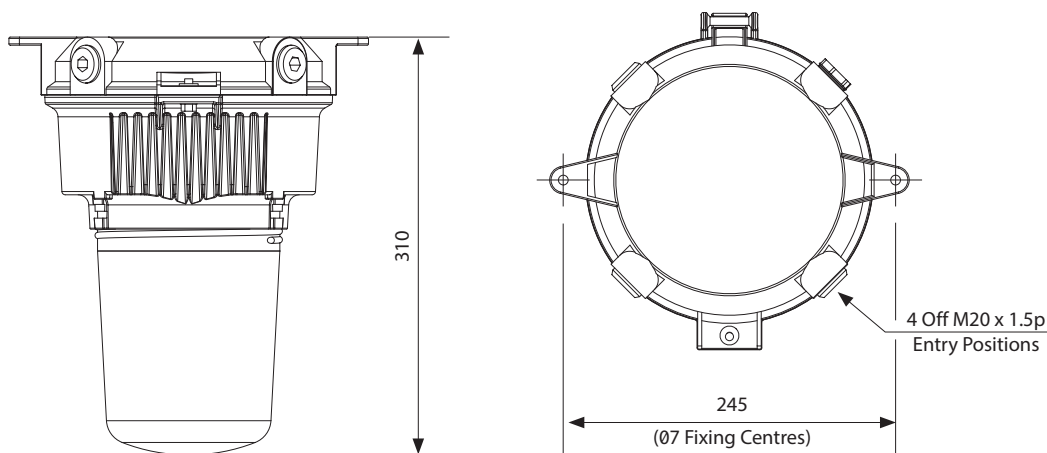
Accessories *Accessories should be ordered separately*

	Order Code
Wire guard (can be used with reflectors)	E0850-0048
Dome reflector	SECL0-0001
30° angled reflector	SECL0-0002



Dome Reflector • Angled Reflector • Stanchion Mount • Wall Mount • Wire Guard

For all sales and product enquiries please contact Chalmit Sales
T: +44 (0) 141 882 5555 E: sales@chalmit.com





ECLIPSE JUNIOR

LED Lowbay

A compact, highly energy efficient luminaire. Ideal for Industrial Applications.



Mounting Options

Pendant. Pole/Column. Medium Bay. Low Bay.

Standard Specification

Eclipse Junior LED Lowbay

Enclosure	Painted aluminium body with glass globe
Entry	2 x M20 cable entries
Termination	3 core 6mm ² max. conductor with looping
Installation	Surface mounted
Control Gear	Electronic Driver
Colour Temperature (CCT)	5000K (Cool White)
Colour Rendering Index (Ra)	≥70
Maintenance	Barrel nut fastener
Ingress Protection	IP66
Surge Protection	4kV line to line, 6kV line to earth
Electrical Supply	110-277V AC 50/60Hz

Features

- ◆ Highly **Energy Efficient**
- ◆ **Easy one bolt access** for installation
- ◆ Low temperature applications to **-40°C**
- ◆ **40% power savings** compared to equivalent 70W HPS lamps
- ◆ **40% more lightweight** than our Eclipse II alternative
- ◆ **>100,000 maintenance free hours** at 25°C

Std. Cat No.	Delivered Output	Power Consumption	Ambient °C	Weight
ECJI/05L/LE	4841 lm	45W	-40 to +55	5.0kg

Options - Suffix to Catalogue No.

/PE	Pendant mounted version	/WM	Wall mount version
/ST	Stanchion mount version (to suit pole threaded 1¼ NPT)		

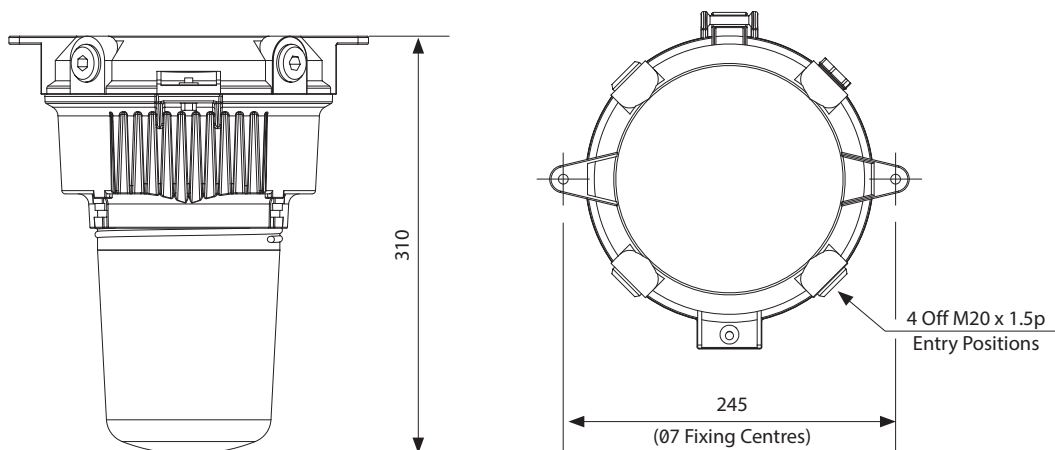
Accessories *Accessories should be ordered separately*

	Order Code
Wire guard (can be used with reflectors)	E0850-0048
Dome reflector	SECL0-0001
30° angled reflector	SECL0-0002



Dome Reflector • Angled Reflector • Stanchion Mount • Wall Mount • Wire Guard

For all sales and product enquiries please contact Chalmit Sales
T: +44 (0) 141 882 5555 E: sales@chalmit.com





Harsh & Hazardous

Hubbell Harsh & Hazardous

Extreme environments demand superior performance, which is why you will find Hubbell products and systems installed in some of the most arduous and safety critical locations worldwide.

The Hubbell Harsh & Hazardous group combines dedicated, market leading brands within the Hubbell portfolio to provide a complete package for companies operating in some of the toughest environments on the planet.

We are committed to providing quality products and services that will meet and exceed your expectations. Our principal activities include the design and manufacture of rugged and hard wearing products. These include telephones and communication products, lighting, control gear and electrical connection products, all designed to operate primarily in extreme outdoor, hazardous and corrosive areas.

Our Brands

All of our brands are long established and well respected businesses within each of their industries. Our primary industry sectors include: Oil & Gas, Petrochemical, Industrial, Marine, Military, Transport and Commercial.



Corporate Information

Hubbell Incorporated HQ is based in Connecticut, U.S.A. and you can find out more information about the Hubbell Group on our corporate website at www.hubbell.com



Contact Details

United Kingdom

Chalmit PO Box 5575 Glasgow G52 9AP UK
Tel: +44 (0) 141 882 5555 Email: info@chalmit.com

Middle East

Building No. 5EA Office No. G03
Dubai Airport Free Zone (DAFZ) PO Box 23529 Dubai UAE
Tel: +971 (0)4 609 1222 Email: middle-east@chalmit.com

Asia Pacific

130 Joo Seng Road #03-02 Olivine Building Singapore 368357
Tel: +65 6282 2242 Fax: +65 6284 4244 Email: asia-pacific@chalmit.com

Korea

512 Hyosung Intellian 681-3 Deungchon Dong
Kangseo-Ku Seoul 157-030 Korea
Tel: +82 2 2063 3719 Fax: +82 2 2603 7386
Mob: +82 10 9977 6349 Email: korea@chalmit.com

China

Room H/I 18F No. 728 Pudong Avenue
Shanghai International Ocean and Finance Building Shanghai 200120 P.R. China
Tel: (86 21) 3392 6550 ext. 318 Fax: (86 21) 3392 6551
Mob: +(86 139) 1829 4175 6349 Email: china@chalmit.com