



HDL 106

LED LUMINAIRES

..... *For Harsh & Hazardous Environments*



LED SOLUTIONS

----- For Harsh & Hazardous Locations -----



Our LED Product Range

Chalmit has over a century's worth of experience in providing cutting edge lighting solutions to harsh, hazardous and marine markets.

As a pioneer of the world's first Zone 1 LED luminaire; the NexLED back in 2005; Chalmit has continued to invest in the unique characteristics of solid state lighting technologies to develop a proven track record in this field.

Our in-house research & development facility has benefited from this investment to help us successfully develop products with the unique characteristics required from our customers.

The result is a complete, proven and reliable range of LED luminaires with our underlying design philosophy at its heart -

Quality, Reliability and Low Maintenance.



Made in Britain

Chalmit® products are designed and manufactured in the UK. We are proud to endorse and sustain a great tradition in engineering and innovation.



Follow us



HDL106

Lightweight, Compact & Versatile.

This versatile range of luminaires is a truly global lighting solution with versions available and specific to Zone 1, Zone 2 and Industrial applications.

When the HDL106 was introduced in 2009 it was hailed as 'the future of hazardous area lighting' due to its weight and power savings. With Chalmit's reputation for quality, reliability and safety the HDL106 continues to be as impressive then as it is now.

LED technology has revolutionised the market allowing up to 50% power savings compared against conventional HID luminaires. These power savings increase the lifespan of the HDL106 too, with over 150,000 maintenance free hours @ 25°C (L70) alongside a robust marine grade construction.

The HDL106N has been fitted with a new diffuser, ensuring that impact and IP requirements are satisfied throughout the range. Rigorous in-house and third party testing ensures that each luminaire not only meets, but exceeds certification authorities, Chalmit's and our customers' expectations.

Find Out More

For all order enquiries contact our Sales Team

T: +44 (0)141 882 5555 E: getintouchuk@hubbell.com



HDL106N

Ex e LED Floodlight

The **HDL106N** is a lightweight and compact Zone 1 floodlight which can be interlinked to provide an effective LED alternative to traditional HID floodlights, up to 250W.

With a variety of beam options, extensive ambient range and marine grade construction, this is a global lighting solution to suit any harsh and hazardous application.



Mounting Options

Floodlight. Pendant. Bulkhead. High Bay. Pole/Column. Road Lighting.

Standard Specification

HDL106N Ex e LED Floodlight

Type of Protection	Ex e mb (Increased Safety, Encapsulation) Ex tb (Dust Protected Enclosure)
ATEX Classification	Group II Category 2 GD
Area Classification	Zone 1 and 21 areas to EN 60079-10-1 and EN 60079-10-2 with installation to EN 60079-14
Certificate	EU Type Examination Certificate Sira 09ATEX5159X IECEX Certificate of Conformity IECEX SIR 09.0064X
Coding	Ex e mb IIC T4/T3 Gb Ex tb IIIC T103°C Db
Ambient °C	-20 to +50 (T4) / +59.5 (T3)
Enclosure	LM6 Aluminium with epoxy powder finish (RAL 7035) and Polycarbonate diffuser
Entry	2 x M20 cable entries
Termination	3 core 4mm ² max. conductor with looping
Installation	Stirrup mounting bracket
Control Gear	Electronic Driver
Colour Temperature (CCT)	Refer to Ordering Matrix
Colour Rendering Index (Ra)	>70
Maintenance	M8 Hex Head and M6 SKT Head
Ingress Protection	IP66/67 to EN 60529
Surge Protection	4kV line to line, 6kV line to earth
Electrical Supply	Refer to Ordering Matrix

Features

- ◆ Highly **Energy Efficient**
- ◆ **Instant on** crisp white light output
- ◆ **Modular design** allowing up to four interlinked luminaires, each providing a delivered output > 5500lm
- ◆ **Lower power consumption** than HID lamps
- ◆ **Lightweight** (6kg per module) lighting solution
- ◆ **>150,000 maintenance free hours** at 25°C (L70)

HDL106N							
Version ¹	Voltage	Beam Pattern ³	Mount	Light (CCT)	Cable Entries	Material & Paint	Options
0 – 24 LEDs [27W] 1 – 48 LEDs [53W] 2 – 96 LEDs [103W] 3 – 144 LEDs [155W] 4 – 192 LEDs [206W]	H – 100-254V AC L – 18-54V AC/DC ²	N – Narrow (6565lm) M – Medium (5882lm) W – Wide (5624lm) X – Extra Wide (5547lm)	H – Horizontal Mount [single unit] V – Vertical Mount [multiple units] C – Ceiling Mount	W – Cool White (5000K) X – Warm White (3000K)	0 – M20 5 – M25 OBP – M20 Brass Nickel Plated Plugs 5BP – M25 Brass Nickel Plated Plugs	04 – LM6 Aluminium RAL 7035 (Grey)	FG – Glass front cover ⁴ RCG – Rapid Connection Gland for single entry ⁵ RCGL – Rapid Connection Gland for looping ⁵

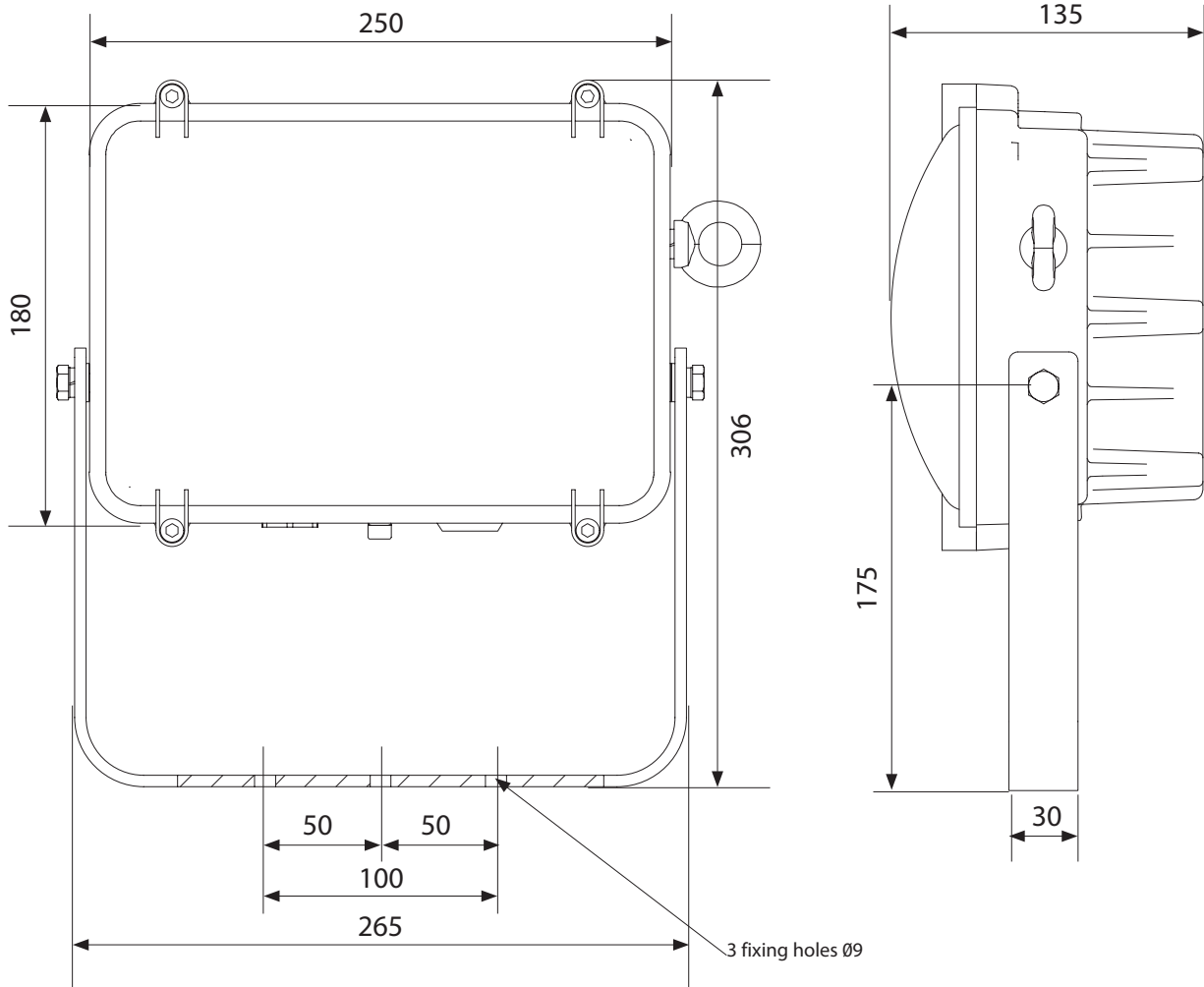
¹Power consumption provided in square brackets
²Upper ambient becomes +55°C. Coding becomes 'Ex e mb IIC T4 Gb; Ex tb IIIC T87°C Db'
³Delivered outputs based on single module 48LED version
⁴Standard Cover Front Clear Polycarbonate (No Abbreviation required)
⁵Factory fitted with 4pin Rapid Connection Gland entry only. Purchaser to supply appropriately sized RCG body as determined by site specific cable requirement.

Typical ordering reference: **HDL106N1HWHW004FG**

Accessories *Should be ordered separately*

	Order Code
Crane Damper Bracket (96 LEDs Twin Module)	SHDL1-000002
Crane Damper Bracket (144 LEDs Triple Module)	SHDL1-000003

Single unit (24/48 LEDs)





HDL106NE

Ex e LED Floodlight

The **HDL106NE** is a distinctive Emergency LED luminaire allowing up to three modules interlinked, providing an effective and efficient alternative to traditional battery-backed luminaires. With a variety of beam options available, and integral battery backup allowing for either 90 minutes or 3 hours battery duration, this is a flexible solution for any Emergency or Escape to Sea application.



Mounting Options

Floodlight. Pendant. Bulkhead. High Bay. Pole/Column. Road Lighting.

Standard Specification

HDL106NE Ex e LED Floodlight

Type of Protection	Ex e mb (Increased Safety, Encapsulation) Ex tb (Dust Protected Enclosure)
ATEX Classification	Group II Category 2 GD
Area Classification	Zone 1 and 21 areas to EN 60079-10-1 and EN 60079-10-2 with installation to EN 60079-14
Certificate	EU Type Examination Certificate Sira 09ATEX5159X IECEX Certificate of Conformity IECEx SIR 09.0064X
Coding	Ex e mb IIC T4 Gb Ex tb IIIC T103°C Db
Ambient °C	-20 to +50
Enclosure	LM6 Aluminium with epoxy powder finish (RAL 7035) and Polycarbonate diffuser
Entry	2 x M20 cable entries
Termination	4 core 4mm ² max. conductor with looping
Installation	Stirrup mounting bracket
Control Gear	Electronic Driver
Colour Temperature (CCT)	Refer to Ordering Matrix
Colour Rendering Index (Ra)	>70
Maintenance	M8 Hex Head and M6 SKT Head
Emergency Duration	90mins (75%) or 3hrs (37.5%)
Ingress Protection	IP66/67 to EN 60529
Surge Protection	4kV line to line, 6kV line to earth
Electrical Supply	100-254V AC 50/60Hz

Features

- ◆ Highly **Energy Efficient**
- ◆ **Instant on** crisp white light output
- ◆ **Modular design** allowing up to three interlinked luminaires, each providing a delivered output > 5500lm
- ◆ **Lower power consumption** than HID lamps
- ◆ **Lightweight** (9kg per module) lighting solution
- ◆ **>150,000 maintenance free hours** at 25°C (L70)

HDL106N					
Version ¹	Beam Pattern ²	Light (CCT)	Cable Entries	Material & Paint	Options
E – EM (48 LEDs) [62W]	N – Narrow (6565lm)	W – Cool White (5000K) X – Warm White (3000K)	0 – M20 5 – M25 OBP - M20 Brass Nickel Plated Plugs SBP - M25 Brass Nickel Plated Plugs	04 – LM6 Aluminium RAL 7035 (Grey)	FG – Glass front cover ³
ES – EM/Std (96 LEDs) [113W]	M – Medium (5882lm)				BNI – Batteries Not Included ⁴
EE – EM/EM (96 LEDs) [122W]	W – Wide (5624lm)				RCG – Rapid Connection Gland for single entry ⁵
SES – Std/EM/Std (144 LEDs) [165W]	X – Extra Wide (5547lm)				RCGL – Rapid Connection Glands for looping ⁵
ESE – EM/Std/EM (144 LEDs) [174W]					
EEE – EM/EM/EM (144 LEDs) [184W]					

¹ Power consumption provided in square brackets

² Delivered outputs based on single module 48LED version

³ Standard Cover Front Clear Polycarbonate (No Abbreviation required)

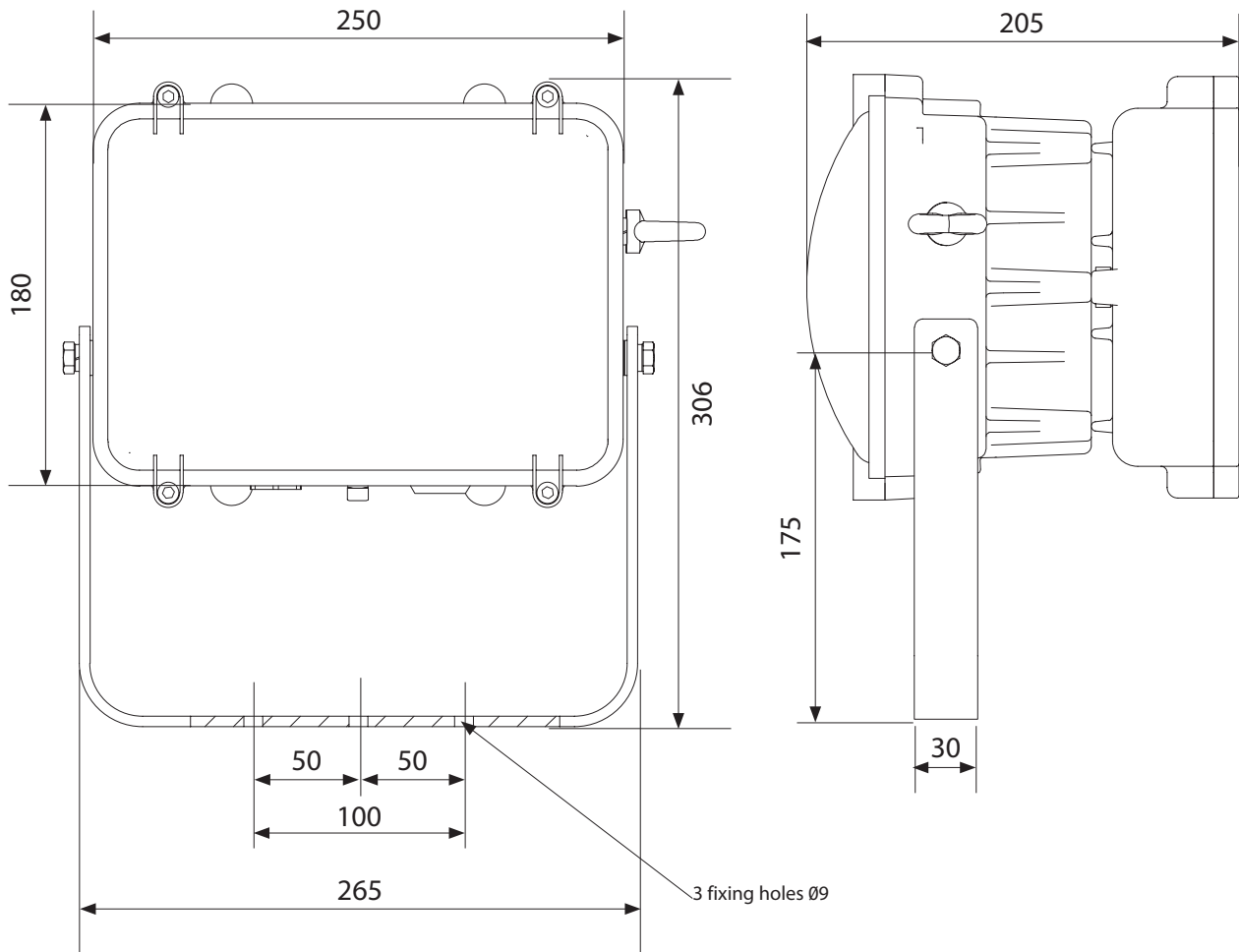
⁴ Battery assembly HDLAL11131S to be ordered separately when required by site. Qty 1 HDLAL11131S assembly per emergency unit

e.g. HDL106NESE*** requires Qty 2 HDLAL11131S.

⁵ Factory fitted with 4pin Rapid Connection Gland entry only. Purchaser to supply appropriately sized RCG body as determined by site specific cable requirement.

Typical ordering reference: **HDL106NESMW004FG**

Single unit (48 LEDs)





HDL206N

Ex e LED Floodlight

The **HDL206N** is an outstanding luminaire allowing up to four modules interlinked, providing an effective and efficient replacement for conventional high power HID floodlights, up to 250W.

With multiple beam options available, and a wide ambient range, this is a truly universal solution for all Zone 2 applications.



Mounting Options

Floodlight. Pendant. Bulkhead. High Bay. Pole/Column. Road Lighting.

Standard Specification

HDL206N Ex e LED Floodlight

Type of Protection	Ex e mb (Increased Safety, Encapsulation) Ex tb (Dust Protected Enclosure)
ATEX Classification	Group II Category 3 GD
Area Classification	Zone 2 and Zone 22 areas to EN 60079-10-1 and EN 60079-10-2 with installation to EN 60079-14
Certificate	Type Examination Certificate Sira 11ATEX4314X
Coding	Ex e mb IIC T4/T3 Gc Ex tb IIIC T103°C Dc
Ambient °C	-20 to +50 (T4) / +59.5 (T3)
Enclosure	LM6 Aluminium with epoxy powder finish (RAL 7035) and Polycarbonate diffuser
Entry	2 x M20 cable entries
Termination	3 core 4mm ² max. conductor with looping
Installation	Stirrup mounting bracket
Control Gear	Electronic Driver
Colour Temperature (CCT)	Refer to Ordering Matrix
Colour Rendering Index (Ra)	>70
Maintenance	M8 Hex Head and M6 SKT Head
Ingress Protection	IP66/67 to EN 60529
Surge Protection	4kV line to line, 6kV line to earth
Electrical Supply	Refer to Ordering Matrix

Features

- ◆ Highly **Energy Efficient**
- ◆ **Instant on** crisp white light output
- ◆ **Modular design** allowing up to four interlinked luminaires, each providing a delivered output > 5500lm
- ◆ **Lower power consumption** than HID lamps
- ◆ **Lightweight** (6kg per module) lighting solution
- ◆ **150,000 maintenance free hours at 25° (L70)**

HDL206N							
Version ¹	Voltage	Beam Pattern ³	Mount	Light (CCT)	Cable Entries	Material & Paint	Options
0 – 24 LEDs [27W] 1 – 48 LEDs [53W] 2 – 96 LEDs [103W] 3 – 144 LEDs [155W] 4 – 192 LEDs [206W]	H – 100-254V AC L – 18-54V AC/DC ²	N – Narrow (6565lm) M – Medium (5882lm) W – Wide (5624lm) X – Extra Wide (5547lm)	H – Horizontal Mount [single unit] V – Vertical Mount [multiple units] C – Ceiling Mount	W – Cool White (5000K) X – Warm White (3000K)	0 – M20 5 – M25 0BP – M20 Brass Nickel Plated Plugs 5BP – M25 Brass Nickel Plated Plugs	04 – RAL 7035 (Grey)	FG – Glass front cover ⁴ RCG – Rapid Connection Gland for single entry ⁵ RCGL – Rapid Connection Gland for looping ⁵

¹ Power consumption provided in square brackets

² Upper ambient becomes +55°C. Coding becomes 'Ex e mb IIC T4 Gb; Ex tb IIIC T87°C Db'

³ Delivered outputs based on single module 48LED version

⁴ Standard Cover Front Clear Polycarbonate (No Abbreviation required)

⁵ Factory fitted with 4pin Rapid Connection Gland entry only. Purchaser to supply appropriately sized RCG body as determined by site specific cable requirement.

Typical ordering reference: **HDL206N1HWHW004**

Accessories *Should be ordered separately*

Crane Damper Bracket (96 LEDs Twin Module)

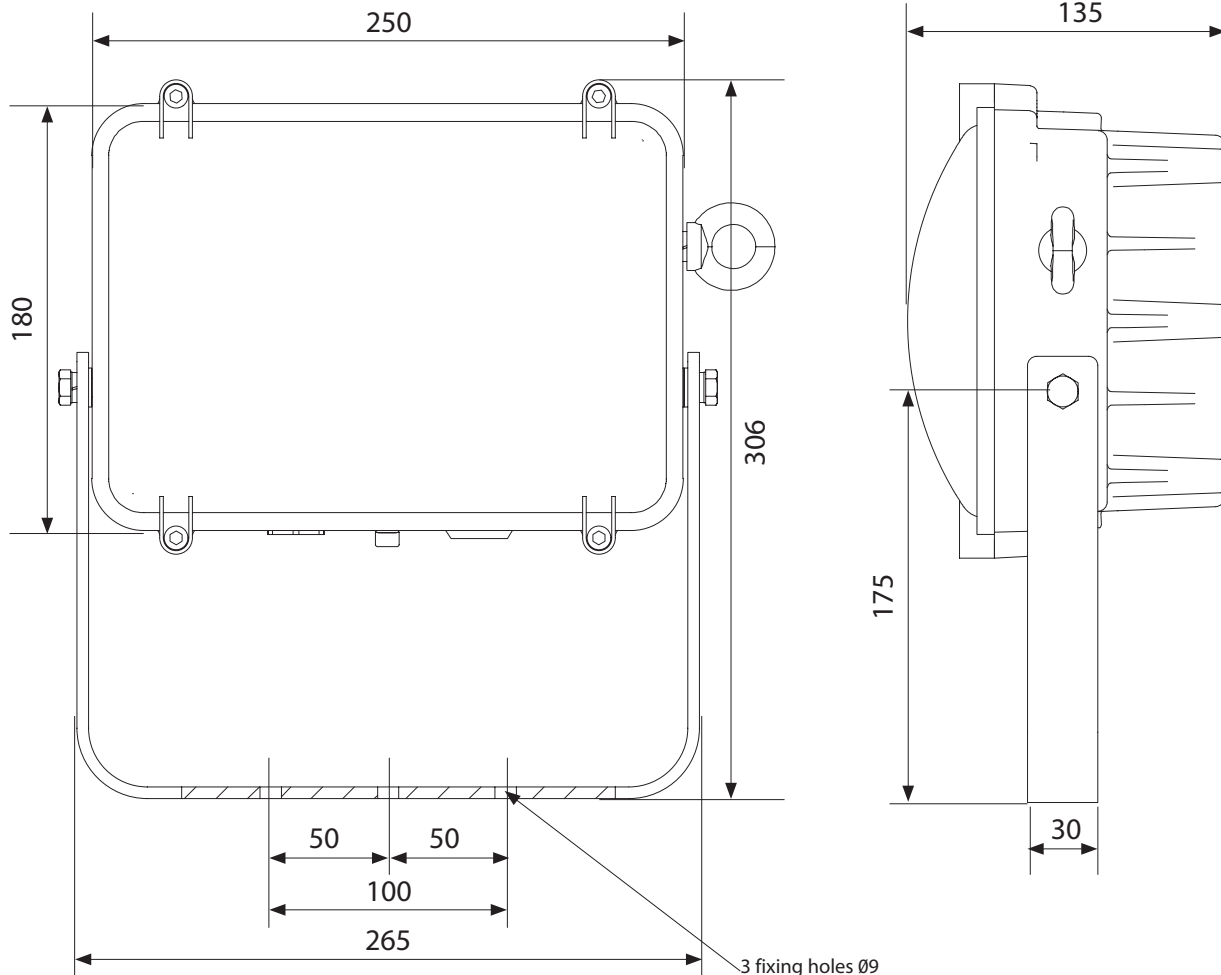
Order Code

SHDL1-000002

Crane Damper Bracket (144 LEDs Triple Module)

SHDL1-000003

Single unit (24/48 LEDs)





HDL206NE

Ex e LED Floodlight

The **HDL206NE** is a compact Emergency LED luminaire allowing up to three modules interlinked, providing an effective and efficient replacement to traditional battery-backed luminaires.

With its lightweight construction, and variety of beam options already available, the addition of an integral battery makes this is a global solution for any Zone 2 application.



Mounting Options

Floodlight. Pendant. Bulkhead. High Bay. Pole/Column. Road Lighting.

Standard Specification

HDL206NE Ex e LED Floodlight

Type of Protection	Ex e mb (Increased Safety, Encapsulation) Ex tb (Dust Protected Enclosure)
ATEX Classification	Group II Category 3 GD
Area Classification	Zone 2 and 22 areas to EN 60079-10-1 and EN 60079-10-2 with installation to EN 60079-14
Certificate	Type Examination Certificate Sira 11ATEX4314X
Coding	Ex e mb IICT4 Gb Ex tb IIIC T103°C Db
Ambient °C	-20 to +50
Enclosure	LM6 Aluminium with epoxy powder finish (RAL 7035) and Polycarbonate diffuser
Entry	2 x M20 cable entries
Termination	4 core 4mm ² max. conductor with looping
Installation	Stirrup mounting bracket
Control Gear	Electronic Driver
Colour Temperature (CCT)	Refer to Ordering Matrix
Colour Rendering Index (Ra)	>70
Maintenance	M8 Hex Head and M6 SKT Head
Emergency Duration	90mins (75%) or 3hrs (37.5%)
Ingress Protection	IP66/67 to EN 60529
Surge Protection	4kV line to line, 6kV line to earth
Electrical Supply	100-254V AC 50/60Hz

Features

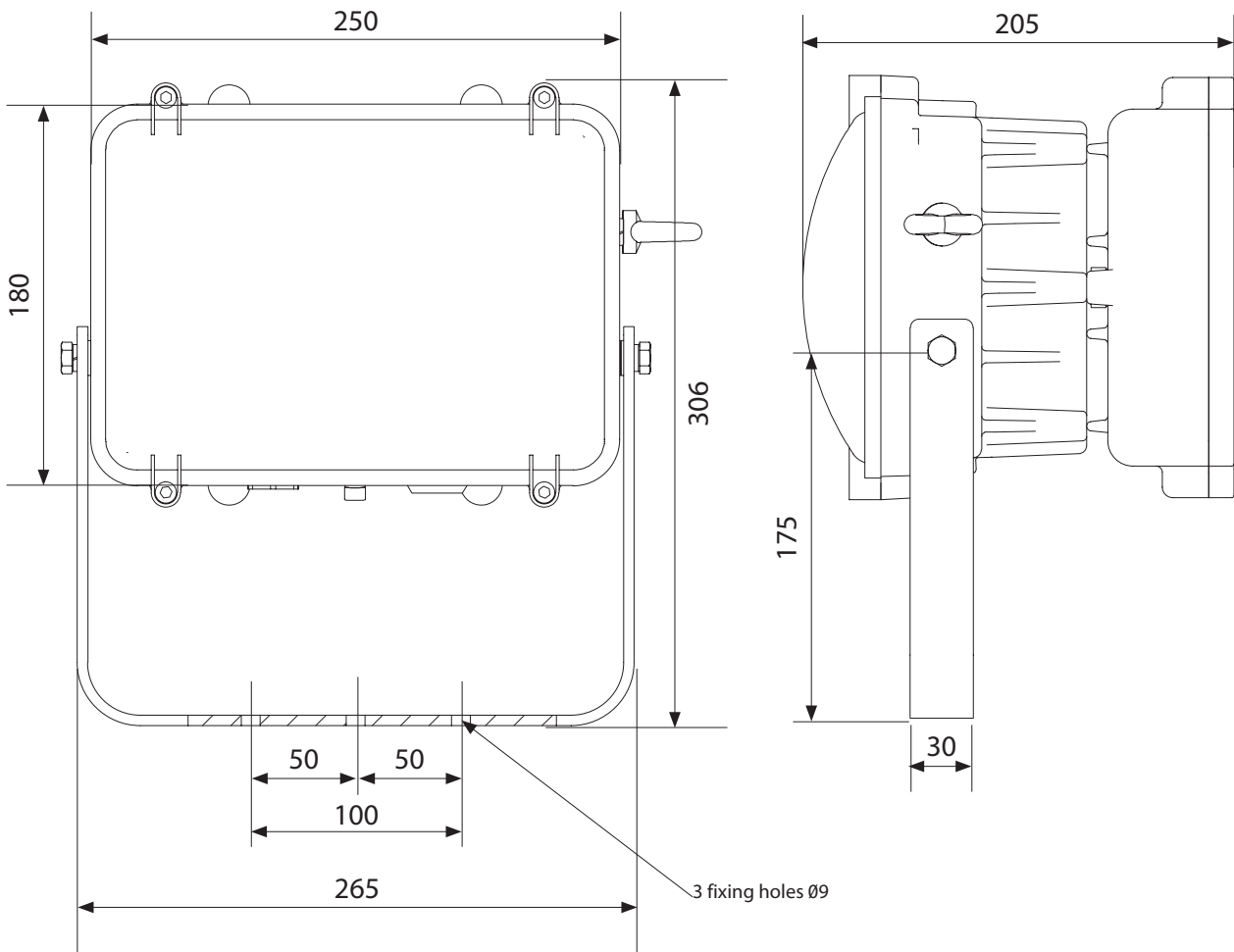
- ◆ Highly **Energy Efficient**
- ◆ **Instant on** crisp white light output
- ◆ **Modular design** allowing up to three interlinked luminaires, each providing a delivered output > 5500lm
- ◆ **Lower power consumption** than HID lamps
- ◆ **Lightweight** (9kg per module) lighting solution
- ◆ **>150,000 maintenance free hours** at 25°C (L70)

HDL206N					
Version ¹	Beam Pattern ²	Light (CCT)	Cable Entries	Material & Paint	Options
E – EM (48 LEDs) [62W] ES – EM/Std (96 LEDs) [113W] EE – EM/EM (96 LEDs) [122W] SES – Std/EM/Std (144 LEDs) [165W] ESE – EM/Std/EM (144 LEDs) [174W] EEE – EM/EM/EM (144 LEDs) [184W]	N – Narrow (6565lm) M – Medium (5882lm) W – Wide (5624lm) X – Extra Wide (5547lm)	W – Cool White (5000K) X – Warm White (3000K)	0 – M20 5 – M25 OBP - M20 Brass Nickel Plated Plugs SBP - M25 Brass Nickel Plated Plugs	04 – RAL 7035 (Grey)	FG – Glass front cover ³ BNI – Batteries Not Included ⁴ RCG – Rapid Connection Gland for single entry ⁵ RCGL – Rapid Connection Glands for looping ⁵

¹ Power consumption provided in square brackets
² Delivered outputs based on single module 48LED version
³ Standard Cover Front Clear Polycarbonate (No Abbreviation required)
⁴ Battery assembly HDLAL11131S to be ordered separately when required by site. Qty 1 HDLAL11131S assembly per emergency unit e.g. HDL106NESE*** requires Qty 2 HDLAL11131S.
⁵ Factory fitted with 4pin Rapid Connection Gland entry only. Purchaser to supply appropriately sized RCG body as determined by site specific cable requirement.

Typical ordering reference: HDL206NESMW004FG

Single unit (48 LEDs)





HDN106N

LED Floodlight

The **HDN106N** is an outstanding luminaire, with a variety of beam options to suit any industrial application.

Up to four modules can be interlinked to increase the output without impacting on the product performance, and provide an effective replacement for conventional HID floodlights, up to 250W.



Mounting Options

Floodlight. Pendant. Bulkhead. High Bay. Pole/Column. Road Lighting.

Standard Specification

HDN106N LED Floodlight

Ambient °C	-20 to +55
Enclosure	LM6 Aluminium with epoxy powder finish (RAL 7035) and Polycarbonate diffuser
Entry	2 x M20 cable entries
Termination	3 core 4mm ² max. conductor with looping
Installation	Stirrup mounting bracket
Control Gear	Electronic Driver
Colour Temperature (CCT)	Refer to Ordering Matrix
Colour Rendering Index (Ra)	>70
Maintenance	M8 Hex Head and M6 SKT Head
Ingress Protection	IP66/67 to EN 60529
Surge Protection	4kV line to line, 6kV line to earth
Electrical Supply	Refer to Ordering Matrix

Features

- ◆ Highly **Energy Efficient**
- ◆ **Instant on** crisp white light output
- ◆ **Modular design** allowing up to four interlinked luminaires, each providing a delivered output > 5500lm
- ◆ **Lower power consumption** than HID lamps
- ◆ **Lightweight** (6kg per module) lighting solution
- ◆ **>150,000 maintenance free hours** at 25°C (L70)

HDN106N							
Version ¹	Voltage	Beam Pattern ²	Mount	Light (CCT)	Cable Entries	Material & Paint	Options
0 – 24 LEDs [26W] 1 – 48 LEDs [43W] 2 – 96 LEDs [87W] 3 – 144 LEDs [129W] 4 – 192 LEDs [174W]	H – 100-254V AC L – 18-54V AC/DC	N – Narrow (6565lm) M – Medium (5882lm) W – Wide (5624lm) X – Extra Wide (5547lm)	H – Horizontal Mount [single unit] V – Vertical Mount [multiple units] C – Ceiling Mount	W – Cool White (5000K) X – Warm White (3000K)	0 – M20 5 – M25 0BP – M20 Brass Nickel Plated Plugs 5BP – M25 Brass Nickel Plated Plugs	04 – RAL 7035 (Grey)	FG – Glass front cover ³ RCG – Rapid Connection Gland for single entry ⁴ RCGL – Rapid Connection Glands for looping ⁴

¹Power consumption provided in square brackets

²Delivered outputs based on single module 48LED version

³Standard Cover Front Clear Polycarbonate (No Abbreviation required)

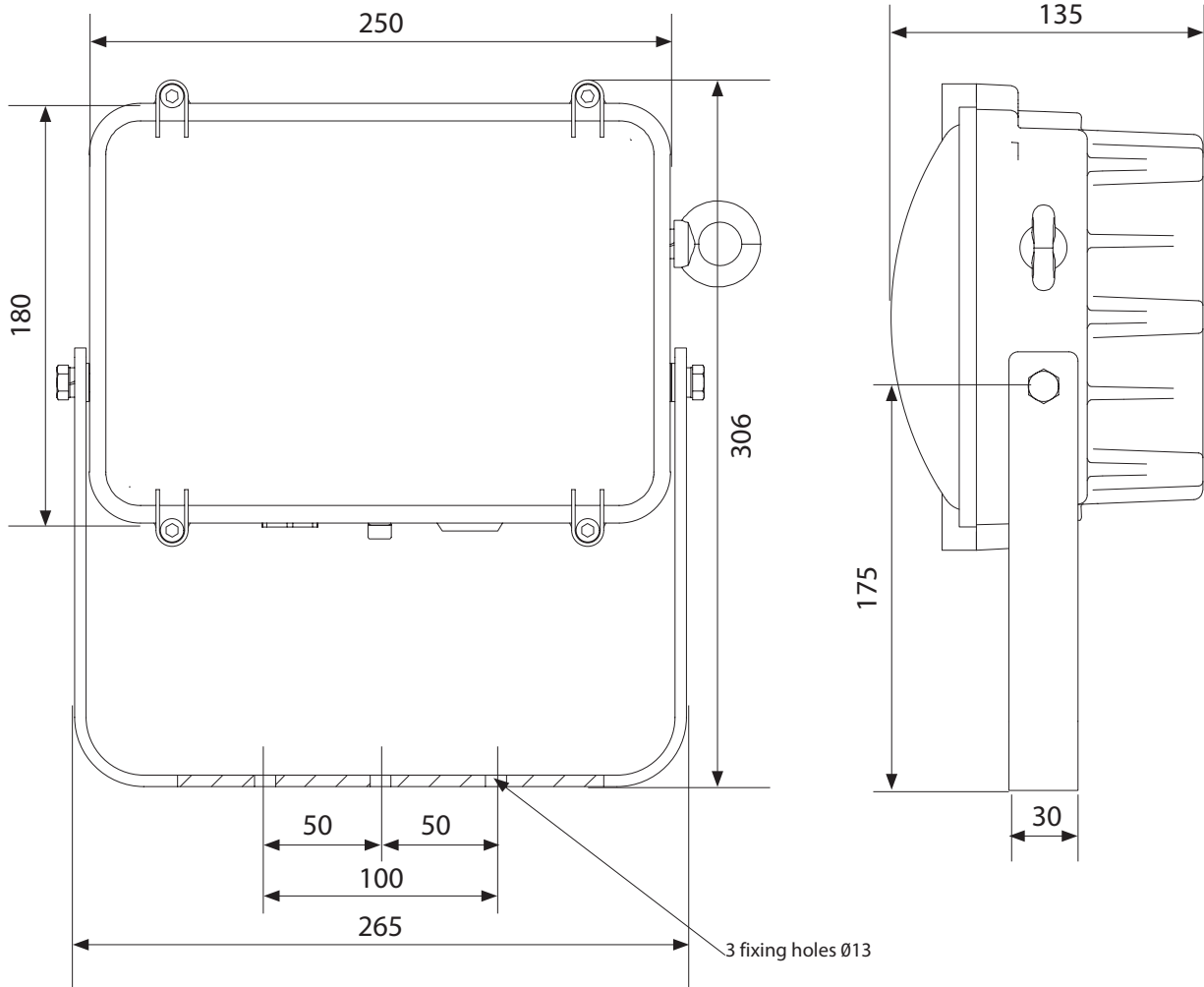
⁴Factory fitted with 4pin Rapid Connection Gland entry only. Purchaser to supply appropriately sized RCG body as determined by site specific cable requirement.

Typical ordering reference: **HDN106N1HWHW004FG**

Accessories *Should be ordered separately*

Crane Damper Bracket (96 LEDs Twin Module)	Order Code
Crane Damper Bracket (144 LEDs Triple Module)	SHDL1-000002
	SHDL1-000003

Single unit (24/48 LEDs)





HDN106NE

LED Floodlight

The **HDN106NE** is a distinctive Emergency LED luminaire allowing up to three modules interlinked, providing an effective and efficient replacement to traditional battery-backed luminaires.

With a wide ambient range and multiple beam options available, this is a truly global industrial solution for any application where Emergency lighting is required for a period of 90mins or 3hrs.



UK
CA CE

International Approvals

Mounting Options

Floodlight. Pendant. Bulkhead. High Bay. Pole/Column. Road Lighting.

Standard Specification

HDN106NE LED Floodlight

Ambient °C	-20 to +55
Enclosure	LM6 Aluminium with epoxy powder finish (RAL 7035) and Polycarbonate diffuser
Entry	2 x M20 cable entries
Termination	4 core 4mm ² max. conductor with looping
Installation	Stirrup mounting bracket
Control Gear	Electronic Driver
Colour Temperature (CCT)	Refer to Ordering Matrix
Colour Rendering Index (Ra)	>70
Maintenance	M8 Hex Head and M6 SKT Head
Emergency Duration	90mins (75%) or 3hrs (37.5%)
Ingress Protection	IP66/67 to EN 60529
Surge Protection	4kV line to line, 6kV line to earth
Electrical Supply	100-254V AC 50/60Hz

Features

- ◆ Highly **Energy Efficient**
- ◆ **Modular design** allowing up to three interlinked luminaires, each providing a delivered output > 5500lm
- ◆ **Instant on** crisp white light output
- ◆ **Lower power consumption** than HID lamps
- ◆ **Lightweight** (9kg per Emergency module) lighting solution
- ◆ **>150,000 maintenance free hours** at 25°C (L70)

HDN106N					
Version ¹	Beam Pattern ²	Light (CCT)	Cable Entries	Material & Paint	Options
E – EM (48 LEDs) [62W] ES – EM/Std (96 LEDs) [105W] EE – EM/EM (96 LEDs) [122W] SES – Std/EM/Std (144 LEDs) [149W] ESE – EM/Std/EM (144 LEDs) [165W] EEE – EM/EM/EM (144 LEDs) [184W]	N – Narrow (6565lm) M – Medium (5882lm) W – Wide (5624lm) X – Extra Wide (5547lm)	W – Cool White (5000K) X – Warm White (3000K)	0 – M20 5 – M25 OBP - M20 Brass Nickel Plated Plugs 5BP - M25 Brass Nickel Plated Plugs	04 – RAL 7035 (Grey)	FG – Glass front cover ³ BNI – Batteries Not Included ⁴ RCG – Rapid Connection Gland for single entry ⁵ RCGL – Rapid Connection Glands for looping ⁵

¹Power consumption provided in square brackets

²Delivered outputs based on single module 48LED version

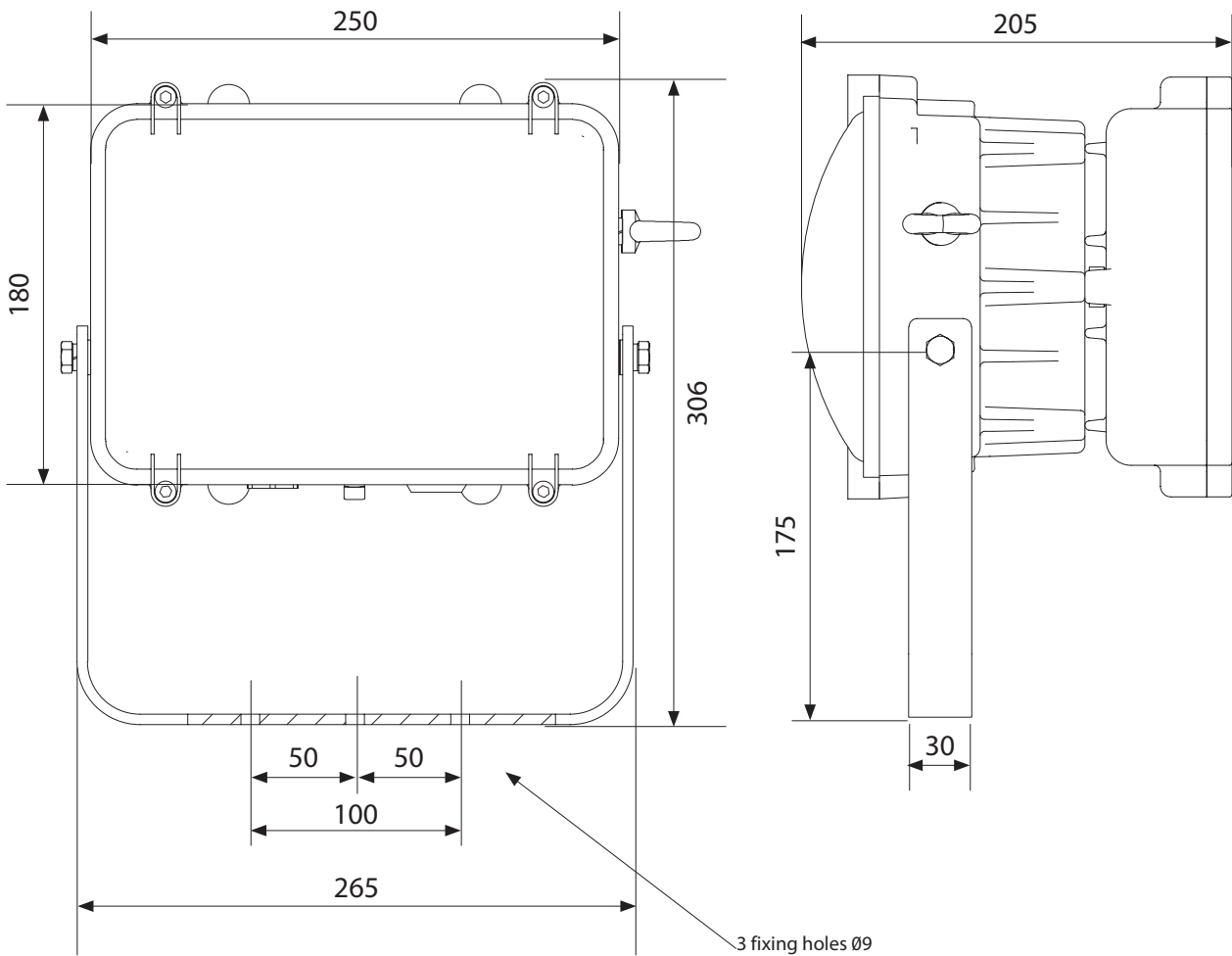
³Standard Cover Front Clear Polycarbonate (No Abbreviation required)

⁴Battery assembly HDLAL11131S to be ordered separately when required by site. Qty 1 HDLAL11131S assembly per emergency unit e.g. HDL106NESE*** requires Qty 2 HDLAL11131S.

⁵Factory fitted with 4pin Rapid Connection Gland entry only. Purchaser to supply appropriately sized RCG body as determined by site specific cable requirement.

Typical ordering reference: **HDN106NESMW004FG**

Single unit (48 LEDs)





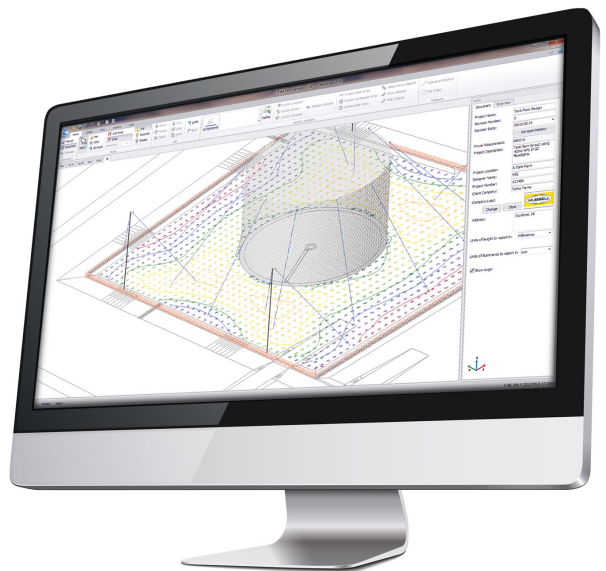
Lighting Design Software

Chalmit's Hazardous Area and Industrial Lighting Design Software **ChalmLite 6** has been developed specifically for the Harsh & Hazardous industry and is free to download.

CHALMLITE 6

With a simple Windows-based user interface and enhanced key features, the software allows users to create designs that range from simple to very complex layouts.


- Realistically rendered views
- Normal, escape and essential calculation facility
- Integrated CAD layer manager and CAD element tools
- Improved estimator, with single-page report option
- Luminaire selection by lumen range and hazardous classification



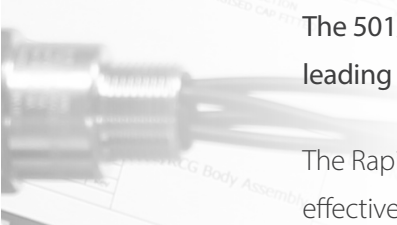
C6 ChalmLite 6 is free of charge

Download now at www.chalmit.com


More than a Cable Gland



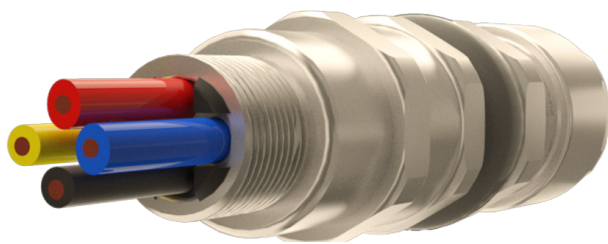
The ultimate hybrid of Cable Gland and Connector makes Hawke's RCG the perfect partner to Chalmit LED luminaires.



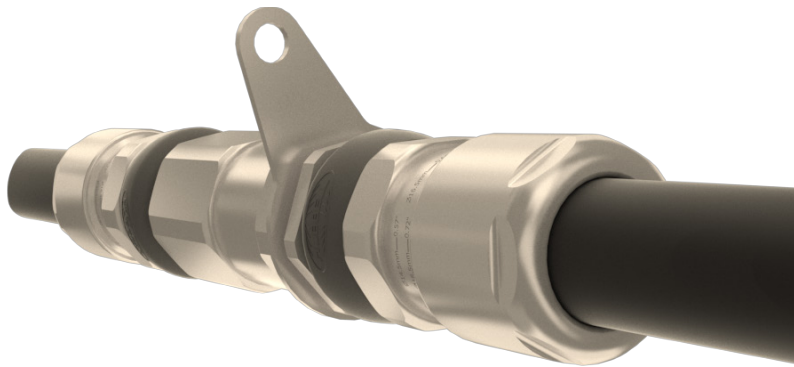
The 501/RCG (Rapid Connection Gland) combines the features of Hawke's market leading Cable Gland range with the plug and play benefits of a connector.



The Rapid Connection Gland provides rapid termination and disconnection in a cost-effective package, reducing ownership expenses by decreasing the time it takes to carry out essential inspection, maintenance and repair.



The **RCG Coupler** provides the means to extend an existing cable without the need to use a junction box, or a more permanent splice kit. **Combining two RCG cable glands and a simple termination system makes upgrading installations fast and easy.**



View Hawke's full range of products at
www.hubbell.com/hawke



SUSTAINABILITY

At Hubbell 

At Hubbell we are committed to reducing the environmental impact of our operations.

We are continually developing products and processes that support sustainability and offer energy efficient solutions for our customers and partners.

Our focus remains addressing and managing the risks associated with climate change and we are committed to facilitating a sustainable future.

For more information visit us at www.hubbell.com/hubbell/en/sustainability

Our ESG Goals



10%
Reduction in
GHG Emissions
By 2025



10%
Reduction in
Water Consumption
By 2025

Hubbell have been recognised as one of 2023's most ethical companies



WHERE WE ARE

- Expanded public ESG disclosures, including alignment with leading sustainability frameworks
- Established goals for reducing greenhouse gas emissions and water consumptions
- Launched sustainability website and increased employee awareness of ESG topics
- Hired sustainability and diversity leaders to manage and drive ESG efforts
- Signed the Paradigm for Parity pledge and were recognized as one of the 2021 World's Most Ethical Companies
- Enhanced focus on products that enable sustainability for customers and value chain



WHERE WE'RE HEADED

- Publishing an inaugural sustainability report and enhancing climate change disclosures
- Expanding and refining company wide sustainability strategy
- Formalizing Hubbell's sustainability governance and ESG policies
- Pursuing product stewardship and circular economy opportunities
- Promoting sustainability and managing risks in Hubbell's supply chain
- Developing new environmental and social targets
- Increasing supplier diversity and engaging with vendors on ESG topics



Social Responsibility

- Host two Employee Inclusion Groups: Women Advancing Their Careers At Hubbell (WATCH) and Multicultural Men (MCM)
- Hubbell Foundation donated over \$1 million in 2020
- Employee development formalized through Hubbell University



Environmental Stewardship

- Track environmental performance including greenhouse gas emissions, water and waste
- Audited largest facilities for energy reduction opportunities and implementing efficiency initiatives
- Launched a Hubbell Sustainability and Infrastructure Management Handbook which provides guidelines on improving the efficiency and sustainability of our facilities



Products With Impact

- Offer products that support renewable energy infrastructure
- LED lighting products allow for greater energy efficiency
- All products are designed with reliability and safety in mind

United Kingdom

Chalmit 388 Hillington Road Glasgow G52 4BL UK
Tel: +44 (0) 141 882 5555
Email: quoteuk@hubbell.com orderuk@hubbell.com getintouchuk@hubbell.com

Americas

Killark Electric, 2112 Fenton Logistics Park Blvd
Fenton, MO 63026
Tel: +1 (314) 531 0460 Email: killarkinfo@hubbell.com

Middle East

Building No. 5EA Office No. G03
Dubai Airport Free Zone (DAFZ) PO Box 23529 Dubai UAE
Tel: +971 (0)4 609 1222 Email: middle-east@chalmit.com

Asia Pacific

130 Joo Seng Road #03-02 Olivine Building Singapore 368357
Tel: +65 6282 2242 Email: asia-pacific@chalmit.com

Korea

512 Hyosung Intellian 681-3 Deungchon Dong
Kangseo-Ku Seoul 157-030 Korea
Tel: +82 2 2063 3719 Email: korea@chalmit.com

China

Room H/I 18F No. 728 Pudong Avenue
Shanghai International Ocean and Finance Building
Shanghai 200120 P.R. China
Tel: (86 21) 3392 6550 ext. 318 Email: china@chalmit.com



A proud member of the Hubbell family.

©2022 Hubbell Incorporated. Because Hubbell has a policy of continuous product improvement, we reserve the right to change design and specifications without notice.

HHi-CHL-Mult-HDL-LUMINAIRE-RANGE-CAT-UK-2022-00251

Chalmit[®]