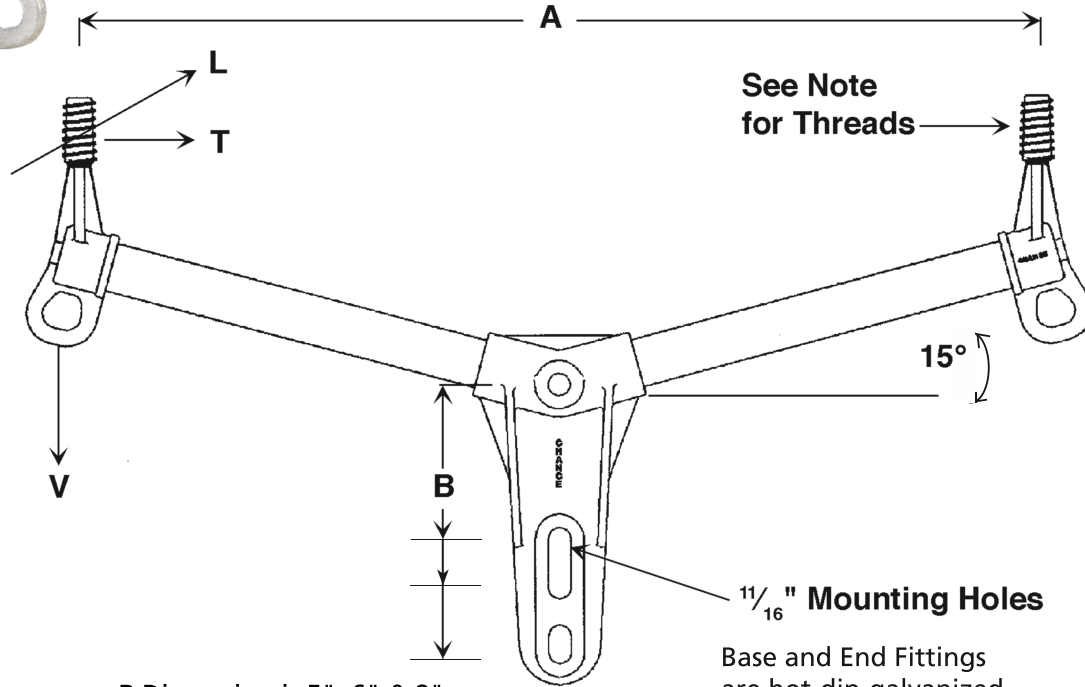




**NYLON  
THREAD  
OPTION**

# Two-Phase Vertical Pin Standoff Bracket (15°)



B Dimension is 5", 6" & 8"

Base and End Fittings are hot-dip-galvanized ductile iron.

Catalog Number	Length A	Minimum Ultimate*			Weight (Each)
		Vertical V	Longitudinal L	Transverse T	
<b>Medium Duty 1½" (38 mm) Dia. Fiberglass Rod</b>					
2SBM30VV1	30" (76.2 cm)	1800 lbs. (816 kg)	1100 lbs. (499 kg)	1500 lbs. (680 kg)	12.3 lbs. (5.5 kg)
2SBM36VV1	36" (91.4 cm)	1500 lbs. (680 kg)	900 lbs. (408 kg)	1500 lbs. (680 kg)	13.0 lbs. (5.9 kg)
2SBM40VV1	40" (101.6 cm)	1350 lbs. (612 kg)	800 lbs. (363 kg)	1500 lbs. (680 kg)	13.5 lbs. (6.1 kg)
2SBM44VV1	44" (111.8 cm)	1225 lbs. (556 kg)	725 lbs. (329 kg)	1500 lbs. (680 kg)	14.0 lbs. (6.3 kg)
2SBM48VV1	48" (121.9 cm)	1125 lbs. (510 kg)	675 lbs. (306 kg)	1500 lbs. (680 kg)	14.5 lbs. (6.5 kg)
<b>Heavy Duty 2" (51 mm) Dia. Fiberglass Rod</b>					
2SBH36VV1	36" (91.4 cm)	2550 lbs. (1157 kg)	2000 lbs. (907 kg)	2500 lbs. (1134 kg)	20.8 lbs. (9.4 kg)
2SBH42VV1	42" (106.7 cm)	2400 lbs. (1089 kg)	1700 lbs. (771 kg)	2500 lbs. (1134 kg)	22.1 lbs. (9.9 kg)
2SBH48VV1	48" (121.9 cm)	2250 lbs. (1021 kg)	1500 lbs. (680 kg)	2500 lbs. (1134 kg)	23.5 lbs. (10.6 kg)
2SBH60VV1	60" (152.4 cm)	1950 lbs. (885 kg)	1200 lbs. (544 kg)	2500 lbs. (1134 kg)	26.1 lbs. (11.7 kg)
2SBH72VV1	72" (182.9 cm)	1750 lbs. (794 kg)	1000 lbs. (454 kg)	2500 lbs. (1134 kg)	28.9 lbs. (13.0 kg)

\*Recommended maximum working load is 50% of minimum ultimate ratings listed.

2SB—VV1 series has 1" plastisol coated threads

For 1" Nylon threads, replace "VV1" in number with "VV2"

For 1" lead threads, replace "VV1" in number with "VV3"

For 1.375" lead threads, replace "VV1" in number with "VV4"

Consult factory for additional lengths.

Add "SC" suffix to the end of the catalog number to denote Silicone Coated rod

