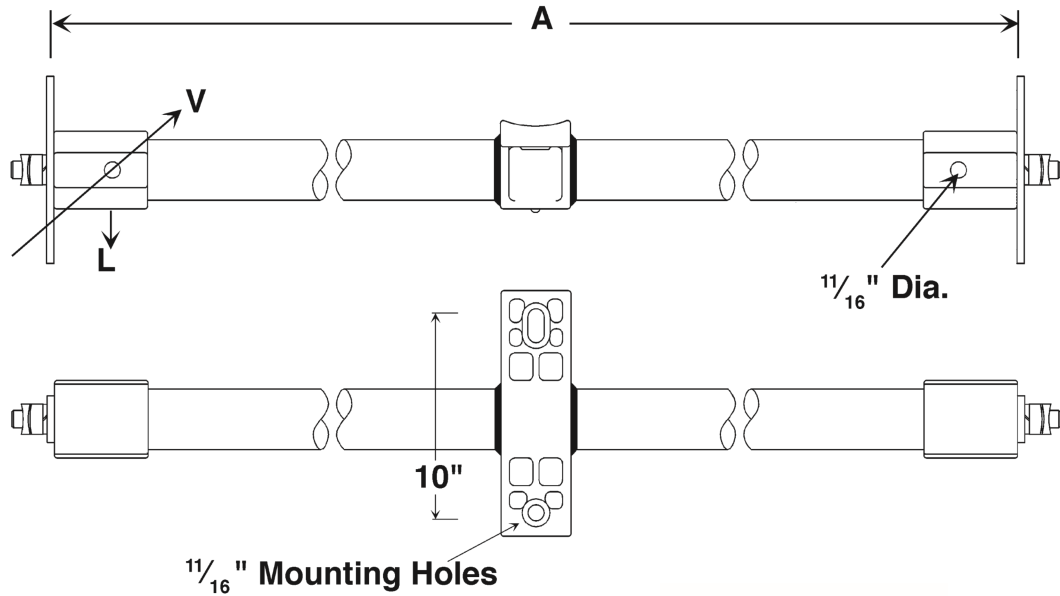
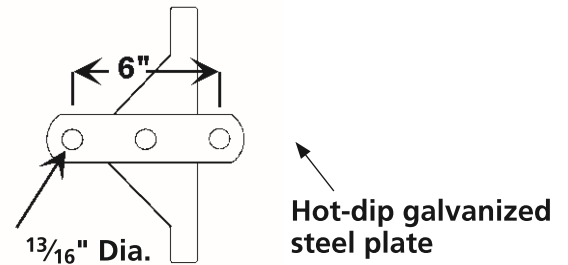


## Medium Duty Deadend Arms



Base and End Fittings are aluminum alloy.



Catalog Number	Length A	Minimum Ultimate* (Balanced)		Weight (Each)
		Vertical V	Longitudinal L	
<b>Medium Duty 2 1/2" (63.5 mm) Dia. Fiberglass Rod</b>				
DEM36DP	36" (91.4 cm)	6400 lbs. (2903 kg)	8000 lbs. (3629 kg)	20.1 lbs. (9.1 kg)
DEM42DP	42" (106.7 cm)	5200 lbs. (2359 kg)	6500 lbs. (2948 kg)	23.0 lbs. (10.4 kg)
DEM48DP	48" (121.9 cm)	4400 lbs. (1996 kg)	5500 lbs. (2495 kg)	24.1 lbs. (10.9 kg)
DEM54DP	54" (137.2 cm)	3400 lbs. (1542 kg)	4300 lbs. (1950 kg)	26.1 lbs. (11.8 kg)

\*Recommended maximum working load is 50% of minimum ultimate ratings listed.  
*Consult factory for additional lengths.*