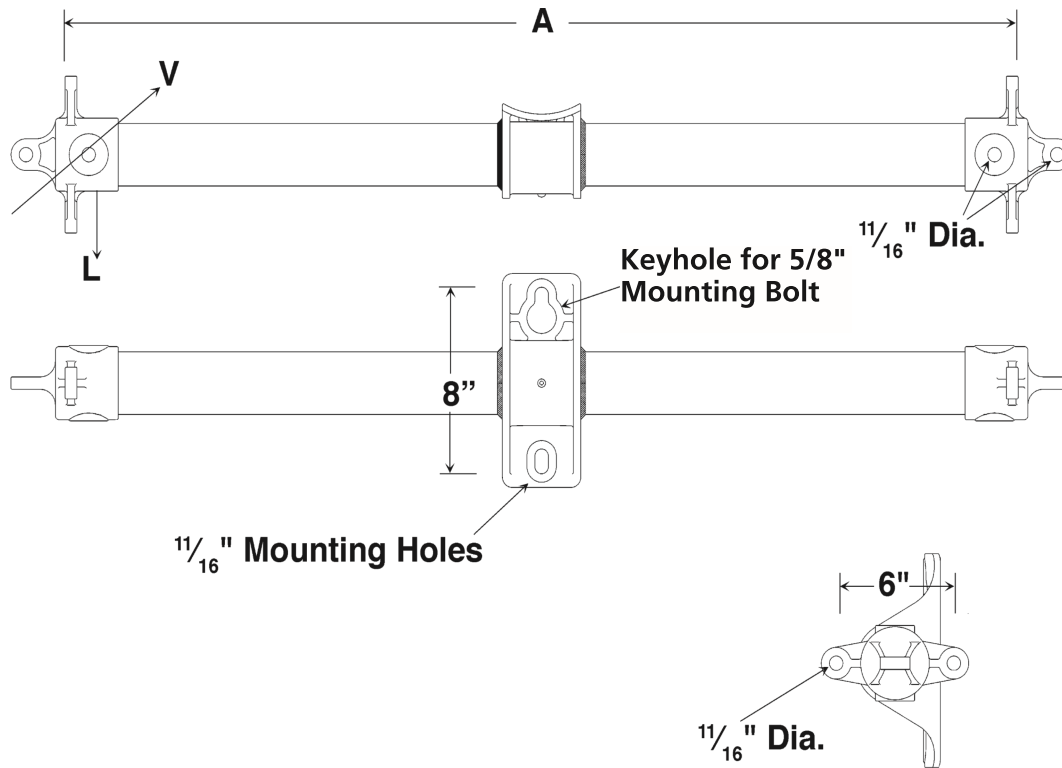


Heavy Duty Deadend Arms



Base and End Fittings are hot-dip galvanized ductile iron.

| Catalog Number | Length A | Minimum Ultimate* (Balanced) | | Weight (Each) |
|--|----------------|------------------------------|----------------------|---------------------|
| | | Vertical V | Longitudinal L | |
| Heavy Duty 3" (76 mm) Dia. Fiberglass Rod | | | | |
| DEH36DP | 36" (91.4 cm) | 9600 lbs. (4354 kg) | 12000 lbs. (5443 kg) | 34.5 lbs. (15.6 kg) |
| DEH42DP | 42" (106.7 cm) | 8400 lbs. (3810 kg) | 10500 lbs. (4763 kg) | 37.3 lbs. (16.9 kg) |
| DEH48DP | 48" (121.9 cm) | 7600 lbs. (3447 kg) | 9500 lbs. (4309 kg) | 41.0 lbs. (18.6 kg) |
| DEH54DP | 54" (137.2 cm) | 6800 lbs. (3084 kg) | 8500 lbs. (3856 kg) | 43.2 lbs. (19.6 kg) |
| DEH60DP | 60" (152.4 cm) | 6000 lbs. (2722 kg) | 7500 lbs. (3402 kg) | 46.2 lbs. (20.9 kg) |
| DEH72DP | 72" (182.9 cm) | 3400 lbs. (1542 kg) | 6500 lbs. (2948 kg) | 52.1 lbs. (23.6 kg) |

*Recommended maximum working load is 50% of minimum ultimate ratings listed.
Consult factory for additional lengths.

