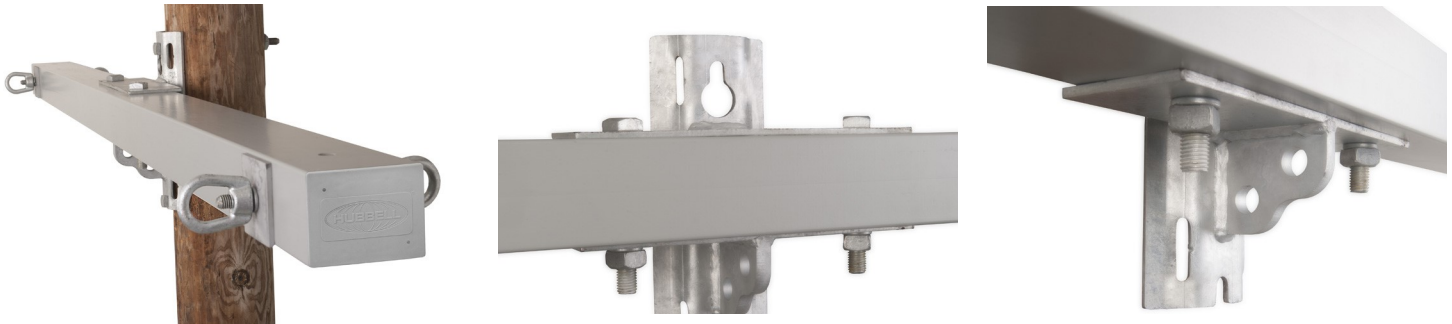


Composite Deadend Crossarms



Composite Deadend Crossarms are a lighter weight and stronger alternative to wood crossarms. They also have a longer life as they are not prone to environmental rotting, cracking and damage from insects and birds.

Features:

- Foam filled, nonconductive composite member
- UV resistant polyurethane protective coating over a veiled mat and UV inhibited composite resin
- Two-hole guy attachment on center mounting bracket
- Mounts with two 5/8" or 3/4" through bolts, or bands to pole
- Available with optional sleeves
- Standard color is grey, also available in brown

Material:

- Arm: Fiberglass reinforced composite
- Hardware: Galvanized steel per ASTM A-153

Series 25 Duty-Rating - 3 5/8" x 4 5/8" Tube O.D.

Catalog Number	Arm Length	Attachment Points	Minimum Ultimate Logitudinal Load per Attachment	Deflection per 1000 lbs. per attachment	Weight (Each)
CDA25G060D2000	5'	2	10000 lbs.	0.17"	50.0 lbs. (22.7 kg)
CDA25G096D2000	8'	2	10000 lbs.	0.45"	62.5 lbs. (28.3 kg)
CDA25G096D4000	8'	4	7500 lbs.	0.68"	71.0 lbs. (32.2 kg)
CDA25G120D2000	10'	2	7500 lbs.	0.82"	71.0 lbs. (32.2 kg)
CDA25G120D4000	10'	4	6000 lbs.	1.10"	79.5 lbs. (36.1 kg)
CDA25G144D2000	12'	2	6000 lbs.	1.46"	79.5 lbs. (36.1 kg)
CDA25G144D4000	12'	4	4200 lbs.	1.92"	88.0 lbs. (40.0 kg)

Above units are grey in color. For Brown substitute G with B.

Above units are for use with 5/8" mounting bolts. For use with 3/4" mounting bolts substitute A with F.

RUS approval pending

Custom hole locations available, consult factory

