



# HDL106

## LED LUMINAIRES

..... *For Harsh & Hazardous Environments* .....



# LED SOLUTIONS

..... For Harsh & Hazardous Locations .....



## Quality, Reliability and Low Maintenance

### Our LED Product Range

Chalmit has over a century's worth of experience in providing cutting edge lighting solutions to hazardous and marine markets. We understand the unique characteristics of LED technology and have a proven track record, pioneering the world's first Zone 1 LED luminaire; the NexLED back in 2005.

As a business we have invested in the development of solid state lighting technologies to provide solutions that meet the exacting requirements of the Oil, Gas, Renewables & Petrochemical industries.

The result is a proven, reliable and complete range of LED luminaires that compliment and enhance our fluorescent and HID products.

At the heart of each new design is our underlying philosophy -  
**Quality, Reliability and Low Maintenance.**



### Made in Britain

Chalmit® products are designed and manufactured in the UK. We are proud to endorse and sustain a great tradition in engineering and innovation.



Follow us

The future of hazardous area lighting is back...



## HDL106

Newly re-certified and re-tested.

When the HDL106 was introduced by Hadar in 2009 it was hailed the 'future of hazardous area lighting' due to its weight and power savings. Well now it's back, together with the added bonus of Chalmit's reputation for quality, reliability and safety.

LED technology has revolutionised the market allowing up to 50% power savings compared against conventional HID luminaires. These power savings increase the lifespan of the HDL106 too, it could last over 10 years, even if it was on for 24 hours a day. That's a whopping 87,600 hours of light!

The HDL106N has been fitted with a new diffuser, ensuring that impact and IP requirements are satisfied throughout the range. Rigorous in-house and third party testing ensures that each luminaire not only meets, but exceeds Hubbell's, CSA's and our customers' expectations.

Find Out More

Contact **Ken Eddleston**, Chalmit Lighting Product Manager  
E: [keddleston@hubbell.com](mailto:keddleston@hubbell.com) T: +44 (0)141 810 9668





# HDL106N

Ex e LED Floodlight

The **HDL106N** is a lightweight and compact Zone 1 floodlight which can be interlinked to provide an effective LED alternative to traditional HID floodlights, up to 250W.

With a variety of beam options, extensive ambient range and marine grade construction, this is a global lighting solution to suit any harsh and hazardous application.



International Approvals

## Mounting Options

Floodlight. Pendant. Bulkhead. High Bay. Pole/Column. Road Lighting.

## Standard Specification

HDL106N Ex e LED Floodlight

Type of Protection	Ex e mb (Increased Safety, Encapsulation) Ex tb (Dust Protected Enclosure)
ATEX Classification	Group II Category 2 GD
Area Classification	Zone 1 and Zone 21 areas to EN 60079-10-1 and EN 60079-10-2 with installation to EN 60079-14
Certificate	EU Type Examination Certificate - Sira 09ATEX5159X IECEx Certificate of Conformity - IECEx SIR 09.0064X
Coding	Ex e mb IIC T4/T3 Gb Ex tb IIIC T103°C Db
Ambient °C	-20 to +50 (T4) / +59.5 (T3)
Enclosure	LM6 Aluminium with epoxy powder finish (RAL 7035) and Polycarbonate diffuser
Entry	2 x M20 cable entries
Termination	3 core 4mm <sup>2</sup> max. conductor with looping
Installation	Stirrup mounting bracket
Control Gear	Electronic Driver
Colour Temperature (CCT)	Refer to Ordering Matrix
Maintenance	M8 Hex Head and M6 SKT Head
Ingress Protection	IP66/67 to EN 60529
Surge Protection	4kV line to line, 6kV line to earth
Electrical Supply	Refer to Ordering Matrix

## Features

- ◆ **Instant on** crisp white light output
- ◆ Highly **Energy Efficient**
- ◆ **Modular design** allowing up to four interlinked luminaires, each providing a delivered output > 5500lm
- ◆ **80,000** maintenance free hours at 25°C
- ◆ **Lower power consumption** than HID lamps
- ◆ **Lightweight** (6kg per module) lighting solution

HDL 106N						
Version	Voltage	Beam Pattern	Mount	Light (CCT)	Cable Entries	Other Options
0 – 24 LEDs	H – 100-254V AC L – 18-54V AC/DC*	N – Narrow	H – Horizontal Mount [single unit] V – Vertical Mount [multiple units] C – Ceiling Mount	W – Cool White (5700K)	0 – M20 5 – M25	04 – RAL 7035 (Grey)
1 – 48 LEDs		M – Medium		X – Warm White (3000K)		FG – Glass front cover
2 – 96 LEDs		W – Wide				
3 – 144 LEDs		X – Extra Wide				
4 – 192 LEDs						

\*Upper ambient becomes +55°C

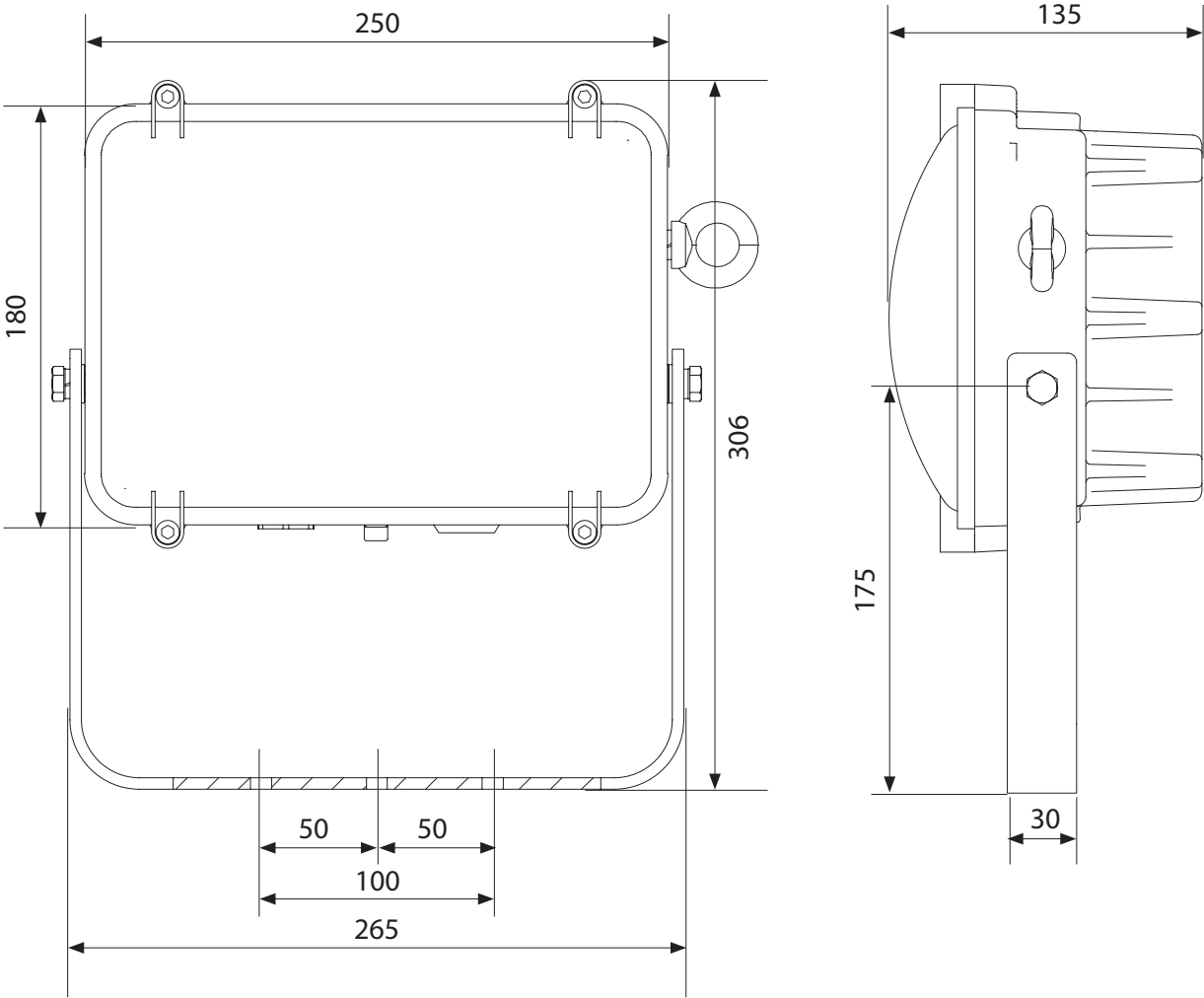
Typical ordering reference: HDL106N1HWHW004

Accessories *Accessories should be ordered separately*

Order Code

Crane Damper Bracket

SSC01-000009





# HDL106NE

Ex e LED Floodlight

The **HDL106NE** is a distinctive Emergency LED luminaire allowing up to four modules interlinked, providing an effective and efficient alternative to traditional battery-backed luminaires.

With a variety of beam options available, and integral battery backup allowing for either 90 minutes or 3 hours battery duration, this is a flexible solution for any Emergency or Escape to Sea application.



International Approvals

## Mounting Options

Floodlight. Pendant. Bulkhead. High Bay. Pole/Column. Road Lighting.

## Standard Specification

HDL106NE Ex e LED Floodlight

Type of Protection	Ex e mb (Increased Safety, Encapsulation) Ex tb (Dust Protected Enclosure)
ATEX Classification	Group II Category 2 GD
Area Classification	Zone 1 and 21 areas to EN 60079-10-1 and EN 60079-10-2 with installation to EN 60079-14
Certificate	EU Type Examination Certificate - Sira 09ATEX5159X IECEx Certificate of Conformity - IECEx SIR 09.0064X
Coding	Ex e mb IIC T4 Gb Ex tb IIIC T103°C Db
Ambient °C	-20 to +50
Enclosure	LM6 Aluminium with epoxy powder finish (RAL 7035) and Polycarbonate diffuser
Entry	2 x M20 cable entries
Termination	4 core 4mm <sup>2</sup> max. conductor with looping
Installation	Stirrup mounting bracket
Control Gear	Electronic Driver
Colour Temperature (CCT)	Refer to Ordering Matrix
Maintenance	M8 Hex Head and M6 SKT Head
Emergency Duration	90mins (100%) or 3hrs (50%)
Ingress Protection	IP66/67 to EN 60529
Surge Protection	4kV line to line, 6kV line to earth
Electrical Supply	100-254V AC 50/60Hz

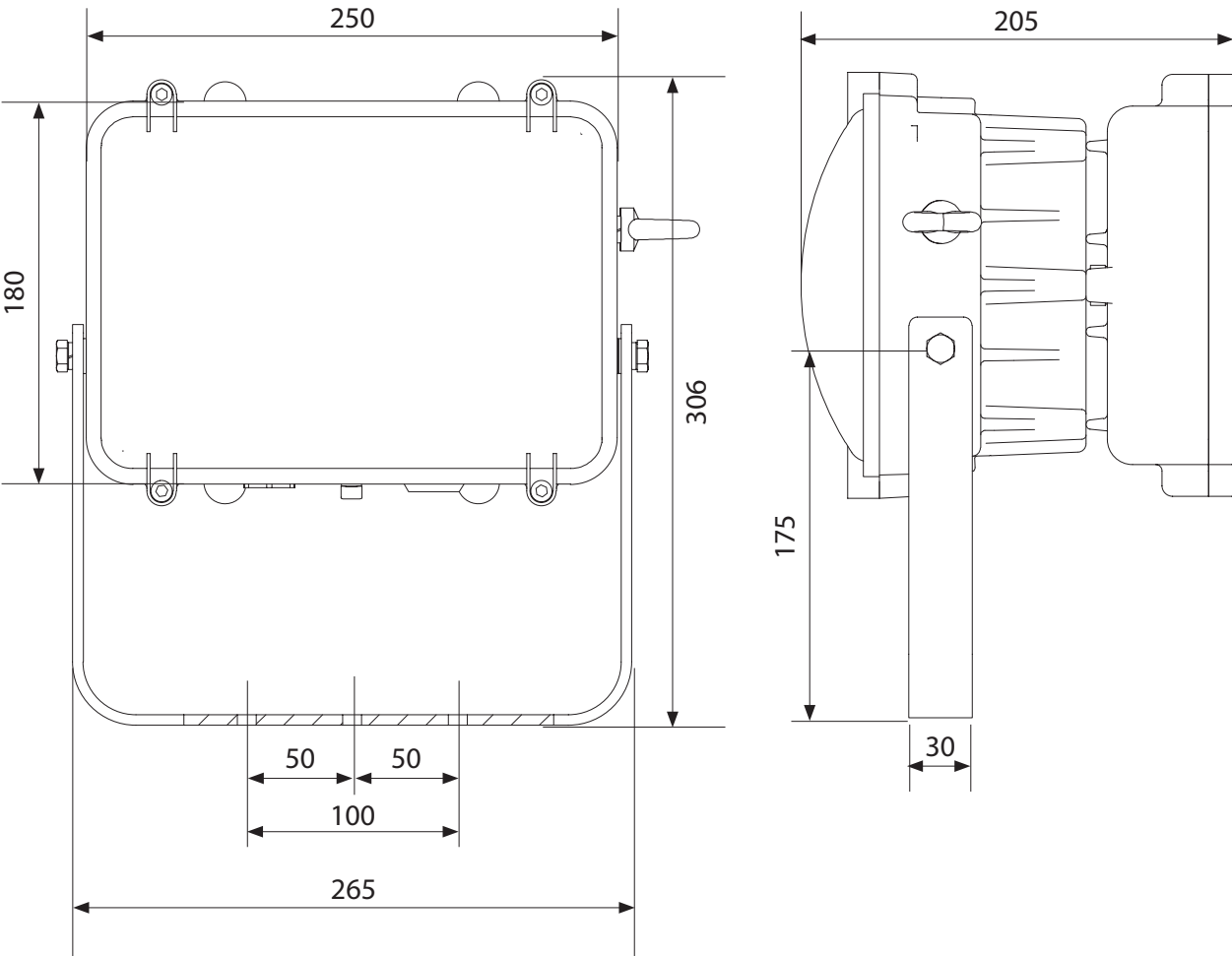
## Features

- ◆ Highly **Energy Efficient**
- ◆ **Instant on** crisp white light output
- ◆ **Modular design** allowing up to four interlinked luminaires, each providing a delivered output > 5500lm
- ◆ **80,000** maintenance free hours at 25°C
- ◆ **Lower power consumption** than HID lamps
- ◆ **Lightweight** (9kg per module) lighting solution

HDL 106N				
Version*	Beam Pattern	Light (CCT)	Cable Entries	Other Options
E – EM (48 LEDs)	N – Narrow	W – Cool White (5700K)	0 – M20	04 – RAL 7035 (Grey)
ES – EM/Std (96 LEDs)	M – Medium	X – Warm White (3000K)	5 – M25	FG – Glass front cover
SES – Std/EM/Std (144 LEDs)	W – Wide			
SEES – Std/EM/EM/Std (192 LEDs)	X – Extra Wide			

\*For alternative arrangements please contact Chalmit Internal Sales.

Typical ordering reference: HDL106NESWX004





# HDL206N

Ex e LED Floodlight

The **HDL206N** is an outstanding luminaire allowing up to four modules interlinked, providing an effective and efficient replacement for conventional high power HID floodlights, up to 250W.

With multiple beam options available, and a wide ambient range, this is a truly universal solution for all Zone 2 applications.



International Approvals

## Mounting Options

Floodlight. Pendant. Bulkhead. High Bay. Pole/Column. Road Lighting.

## Standard Specification

HDL206N Ex e LED Floodlight

Type of Protection	Ex e mb (Increased Safety, Encapsulation) Ex tb (Dust Protected Enclosure)
ATEX Classification	Group II Category 3 GD
Area Classification	Zone 2 and Zone 22 areas to EN 60079-10-1 and EN 60079-10-2 with installation to EN 60079-14
Certificate	Type Examination Certificate - Sira 11ATEX4314X
Coding	Ex e mb IIC T4/T3 Gc Ex tb IIIC T103°C Dc
Ambient °C	-20 to +50 (T4) / +59.5 (T3)
Enclosure	LM6 Aluminium with epoxy powder finish (RAL 7035) and Polycarbonate diffuser
Entry	2 x M20 cable entries
Termination	3 core 4mm <sup>2</sup> max. conductor with looping
Installation	Stirrup mounting bracket
Control Gear	Electronic Driver
Colour Temperature (CCT)	Refer to Ordering Matrix
Maintenance	M8 Hex Head and M6 SKT Head
Ingress Protection	IP66/67 to EN 60529
Surge Protection	4kV line to line, 6kV line to earth
Electrical Supply	Refer to Ordering Matrix

## Features

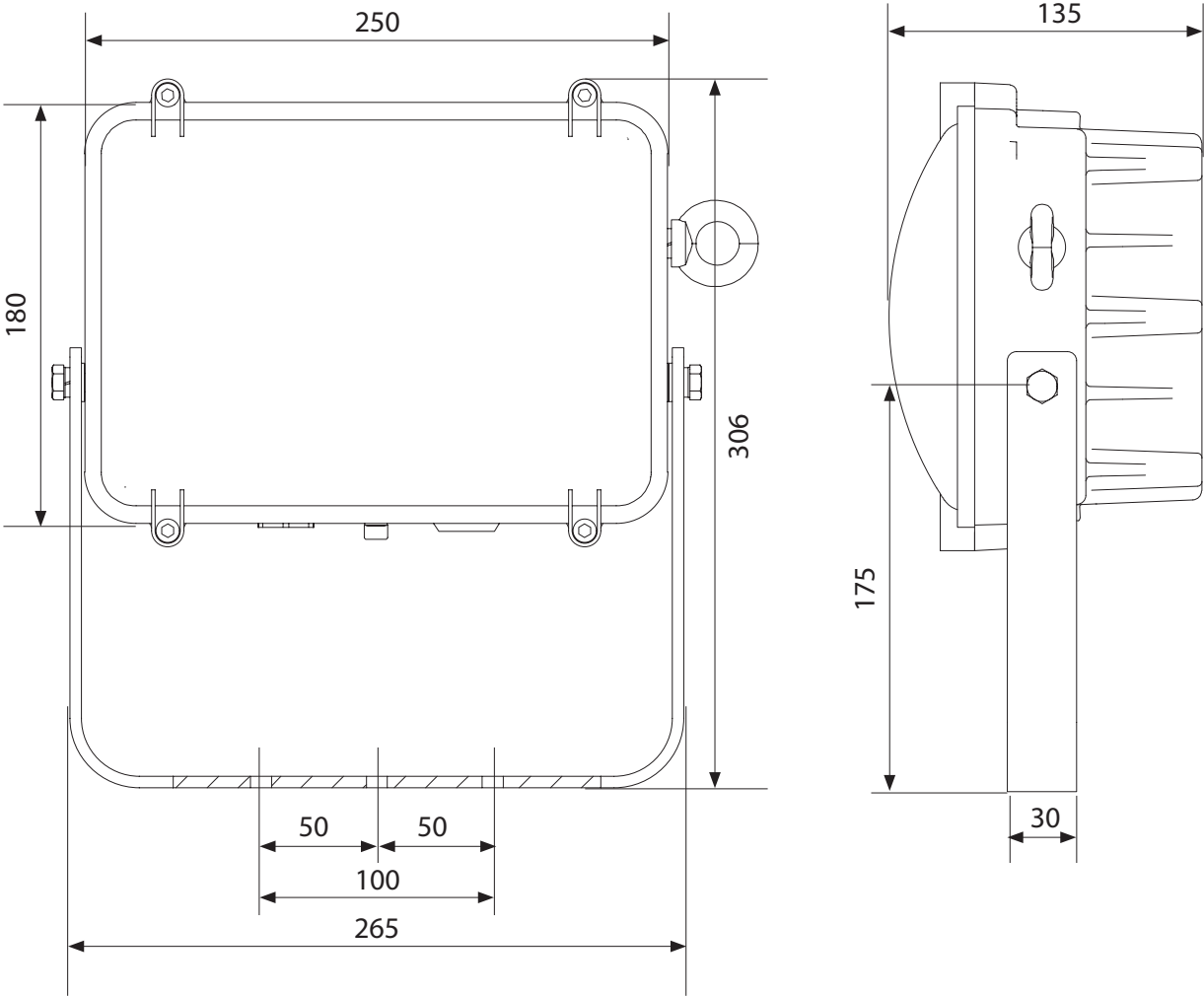
- ◆ Highly **Energy Efficient**
- ◆ **Instant on** crisp white light output
- ◆ **Modular design** allowing up to four interlinked luminaires, each providing a delivered output > 5500lm
- ◆ **80,000** maintenance free hours at 25°C
- ◆ **Lower power consumption** than HID lamps
- ◆ **Lightweight** (6kg per module) lighting solution



HDL 206N						
Version	Voltage	Beam Pattern	Mount	Light (CCT)	Cable Entries	Other Options
<div><div>0 – 24 LEDs</div><div>1 – 48 LEDs</div><div>2 – 96 LEDs</div><div>3 – 144 LEDs</div><div>4 – 192 LEDs</div></div>	<div>H – 100-254V AC</div> <div>L – 18-54V AC/DC*</div>	<div>N – Narrow</div> <div>M – Medium</div> <div>W – Wide</div> <div>X – Extra Wide</div>	<div>H – Horizontal Mount [single unit]</div> <div>V – Vertical Mount [multiple units]</div> <div>C – Ceiling Mount</div>	<div>W – Cool White (5700K)</div> <div>X – Warm White (3000K)</div>	<div>0 – M20</div> <div>5 – M25</div>	<div>04 – RAL 7035 (Grey)</div> <div>FG – Glass front cover</div>

\*Upper ambient becomes +55°C

Typical ordering reference: HDL206N1HWHW004





# HDL206NE

Ex e LED Floodlight

The **HDL206NE** is a compact Emergency LED luminaire allowing up to four modules interlinked, providing an effective and efficient replacement to traditional battery-backed luminaires.

With its lightweight construction, and variety of beam options already available, the addition of an integral battery makes this is a global solution for any Zone 2 application.



International Approvals

## Mounting Options

Floodlight. Pendant. Bulkhead. High Bay. Pole/Column. Road Lighting.

## Standard Specification

HDL206NE Ex e LED Floodlight

Type of Protection	Ex e mb (Increased Safety, Encapsulation) Ex tb (Dust Protected Enclosure)
ATEX Classification	Group II Category 3 GD
Area Classification	Zone 2 and 22 areas to EN 60079-10-1 and EN 60079-10-2 with installation to EN 60079-14
Certificate	EU Type Examination Certificate - Sira 09ATEX5159X
Coding	Ex e mb IIC T4 Gb Ex tb IIIC T103°C Db
Ambient °C	-20 to +50
Enclosure	LM6 Aluminium with epoxy powder finish (RAL 7035) and Polycarbonate diffuser
Entry	2 x M20 cable entries
Termination	3 core 4mm <sup>2</sup> max. conductor with looping
Installation	Stirrup mounting bracket
Control Gear	Electronic Driver
Colour Temperature (CCT)	Refer to Ordering Matrix
Maintenance	M8 Hex Head and M6 SKT Head
Emergency Duration	90mins (100%) or 3hrs (50%)
Ingress Protection	IP66/67 to EN60529
Surge Protection	4kV line to line, 6kV line to earth
Electrical Supply	100-254V AC 50/60Hz

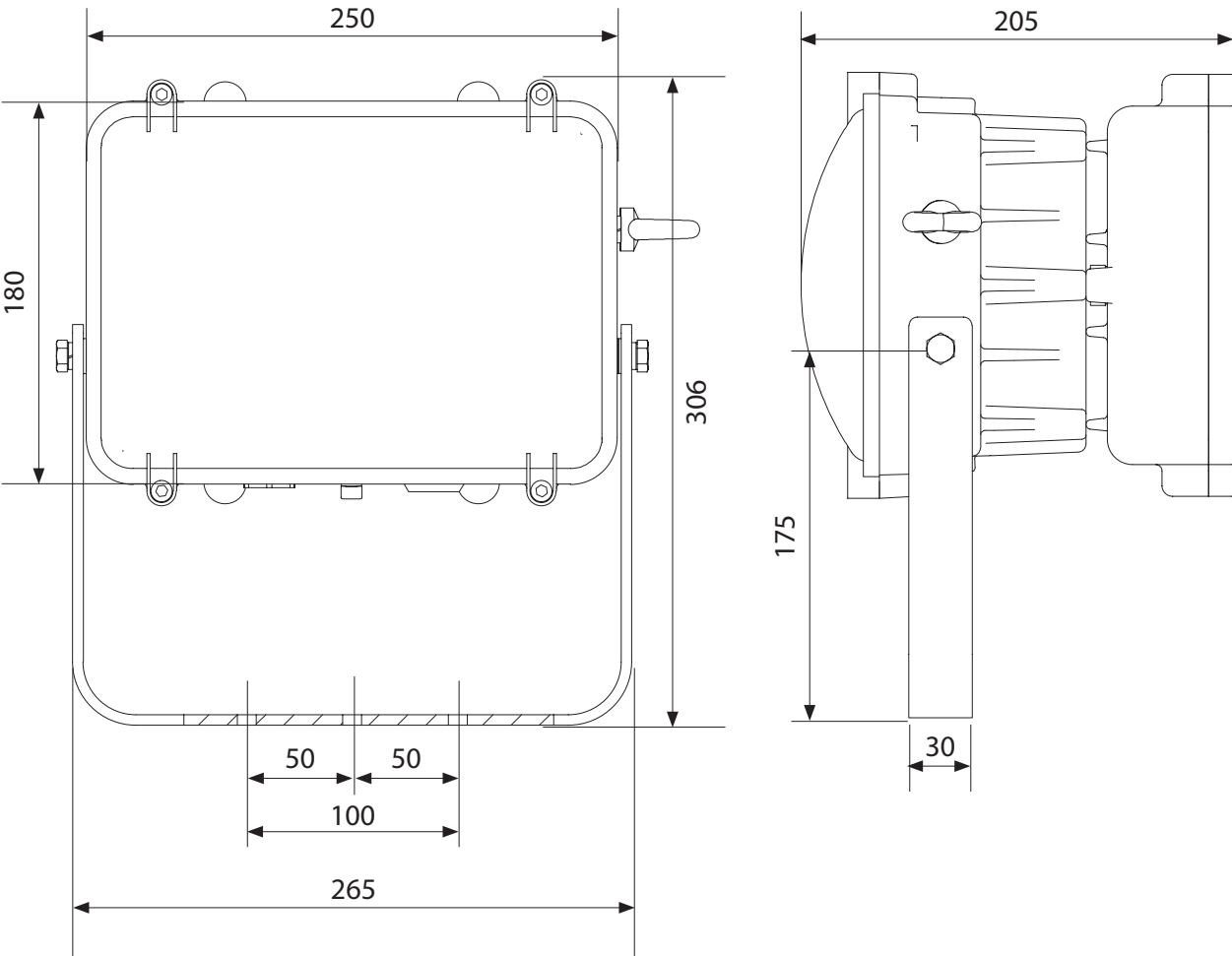
## Features

- ◆ Highly **Energy Efficient**
- ◆ **Instant on** crisp white light output
- ◆ **Modular design** allowing up to four interlinked luminaires, each providing a delivered output > 5500lm
- ◆ **80,000** maintenance free hours at 25°C
- ◆ **Lower power consumption** than HID lamps
- ◆ **Lightweight** (9kg per module) lighting solution

HDL 206N				
Version*	Beam Pattern	Light (CCT)	Cable Entries	Other Options
E – EM (48 LEDs)	N – Narrow	W – Cool White (5700K)	0 – M20	04 – RAL 7035 (Grey)
ES – EM/Std (96 LEDs)	M – Medium	X – Warm White (3000K)	5 – M25	FG – Glass front cover
SES – Std/EM/Std (144 LEDs)	W – Wide			
SEES – Std/EM/EM/Std (192 LEDs)	X – Extra Wide			

\*For alternative arrangements please contact Chalmit Internal Sales.

Typical ordering reference: HDL206NEMW004





# HDN106N

LED Floodlight

The **HDN106N** is an outstanding luminaire, with a variety of beam options to suit any industrial application.

Up to four modules can be interlinked to increase the output without impacting on the product performance, and provide an effective replacement for conventional HID floodlights, up to 250W.



CE

International Approvals

## Mounting Options

Floodlight. Pendant. Bulkhead. High Bay. Pole/Column. Road Lighting.

## Standard Specification

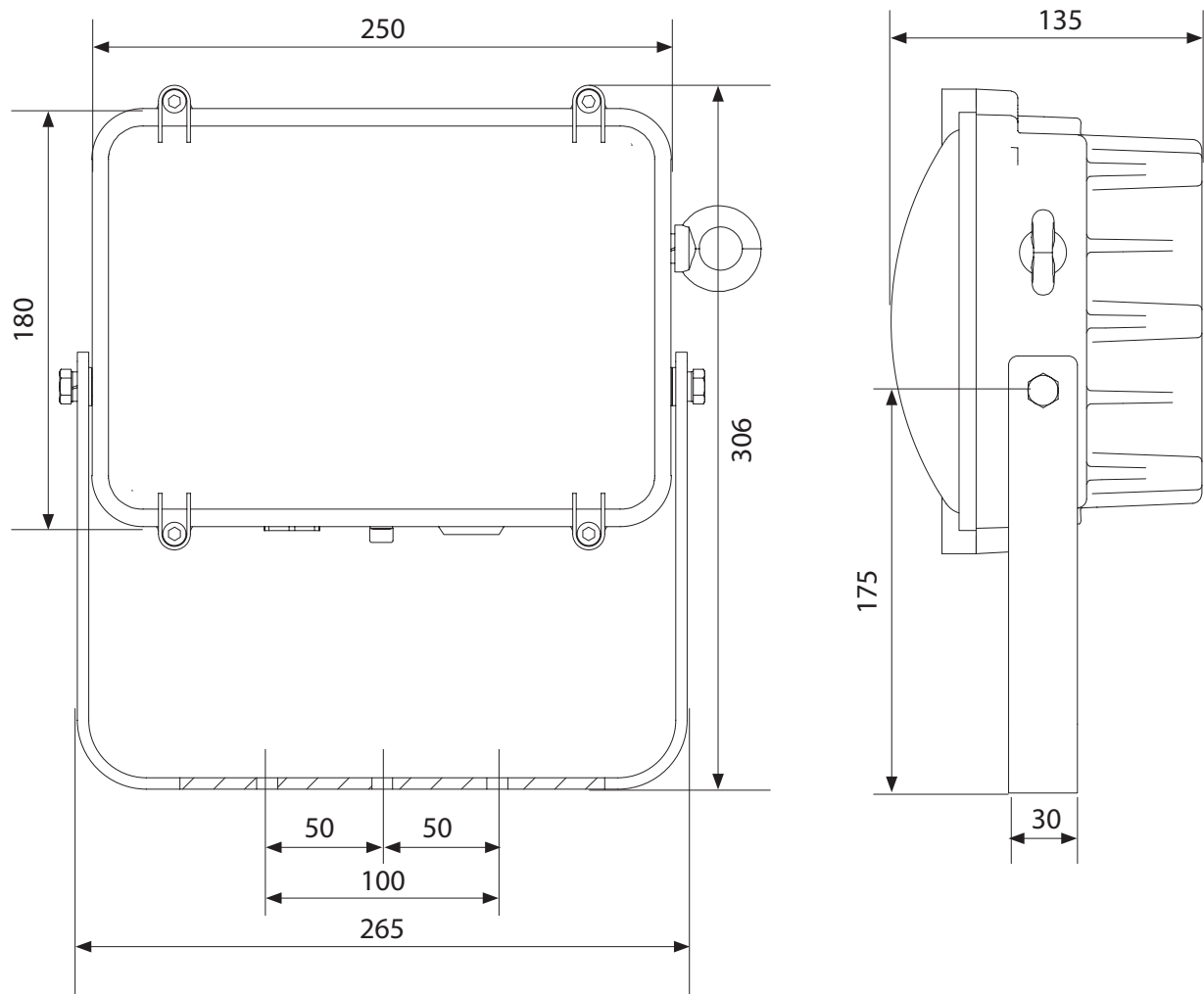
HDN106N LED Floodlight

Ambient °C	-20 to +55
Enclosure	LM6 Aluminium with epoxy powder finish (RAL 7035) and Polycarbonate diffuser
Entry	2 x M20 cable entries
Termination	3 core 4mm <sup>2</sup> max. conductor with looping
Installation	Stirrup mounting bracket
Control Gear	Electronic Driver
Colour Temperature (CCT)	Refer to Ordering Matrix
Maintenance	M8 Hex Head and M6 SKT Head
Ingress Protection	IP66/67 to EN 60529
Surge Protection	4kV line to line, 6kV line to earth
Electrical Supply	Refer to Ordering Matrix

## Features

- ◆ **Instant on** crisp white light output
- ◆ Highly **Energy Efficient**
- ◆ **Modular design** allowing up to four interlinked luminaires, each providing a delivered output > 5500lm
- ◆ **80,000** maintenance free hours at 25°C
- ◆ **Lower power consumption** than HID lamps
- ◆ **Lightweight** (6kg per module) lighting solution

HDN 106N						
Version	Voltage	Beam Pattern	Mount	Light (CCT)	Cable Entries	Other Options
<div>0 – 24 LEDs</div> <div>1 – 48 LEDs</div> <div>2 – 96 LEDs</div> <div>3 – 144 LEDs</div> <div>4 – 192 LEDs</div>	<div>H – 100-254V AC</div> <div>L – 18-54V AC/DC</div>	<div>N – Narrow</div> <div>M – Medium</div> <div>W – Wide</div> <div>X – Extra Wide</div>	<div>H – Horizontal Mount [single unit]</div> <div>V – Vertical Mount [multiple units]</div> <div>C – Ceiling Mount</div>	<div>W – Cool White (5700K)</div> <div>X – Warm White (3000K)</div>	<div>0 – M20</div> <div>5 – M25</div>	<div>04 – RAL 7035 (Grey)</div> <div>FG – Glass front cover</div>
Typical ordering reference:						HDN106N1HWHW004







# HDN106NE

LED Floodlight

The **HDN106NE** is a distinctive Emergency LED luminaire allowing up to four modules interlinked, providing an effective and efficient replacement to traditional battery-backed luminaires.

With a wide ambient range and multiple beam options available, this is a truly global industrial solution for any application where Emergency lighting is required for a period of 90mins or 3hrs.



CE

International Approvals

## Mounting Options

Floodlight. Pendant. Bulkhead. High Bay. Pole/Column. Road Lighting.

## Standard Specification

HDN106NE LED Floodlight

Ambient °C	-20 to +55
Enclosure	LM6 Aluminium with epoxy powder finish (RAL 7035) and Polycarbonate diffuser
Entry	2 x M20 cable entries
Termination	3 core 4mm <sup>2</sup> max. conductor with looping
Installation	Stirrup mounting bracket
Control Gear	Electronic Driver
Colour Temperature (CCT)	Refer to Ordering Matrix
Maintenance	M8 Hex Head and M6 SKT Head
Emergency Duration	90mins (100%) or 3hrs (50%)
Ingress Protection	IP66/67 to EN 60529
Surge Protection	4kV line to line, 6kV line to earth
Electrical Supply	100-254V AC 50/60Hz

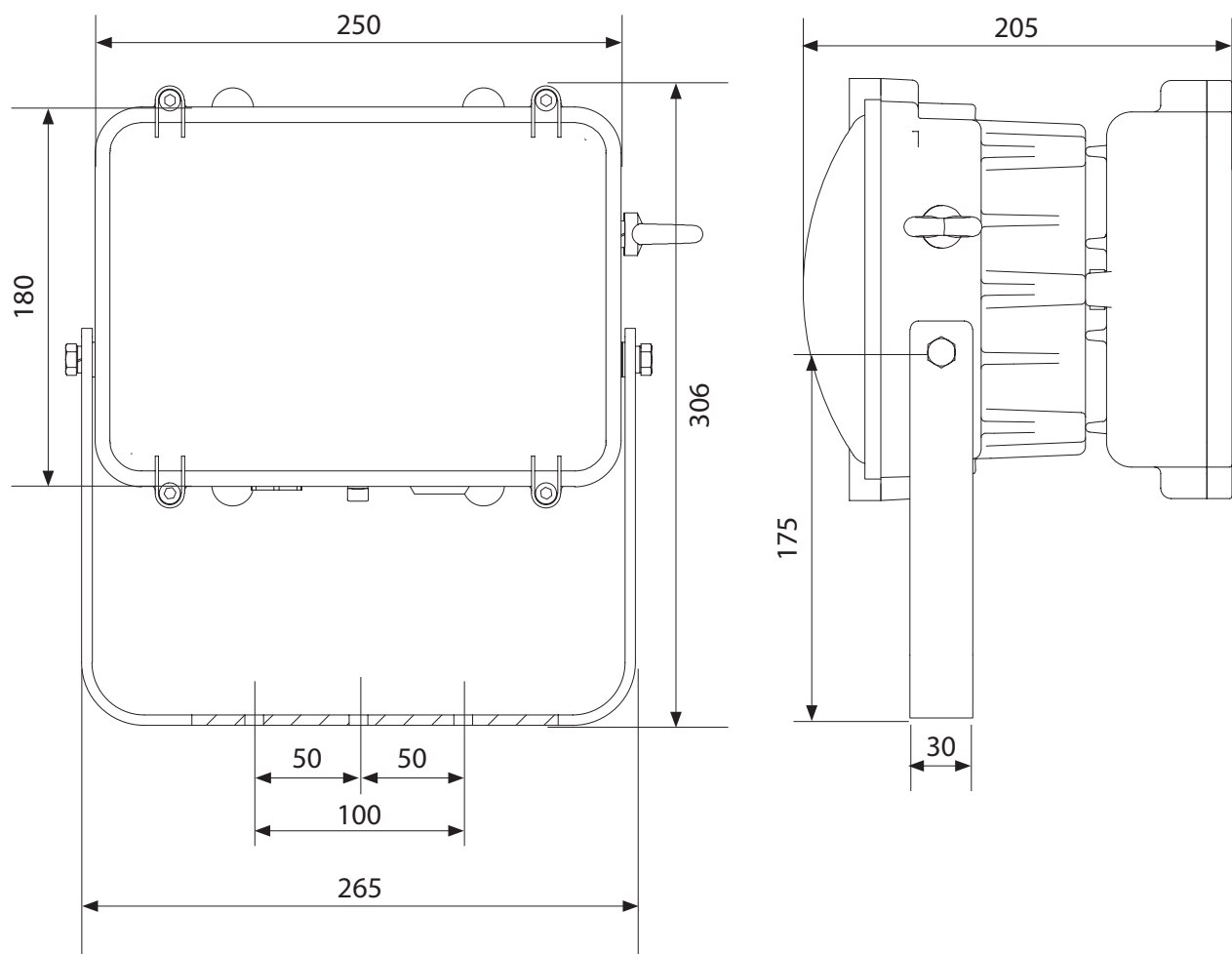
## Features

- ◆ Highly **Energy Efficient**
- ◆ **Instant on** crisp white light output
- ◆ **Modular design** allowing up to four interlinked luminaires, each providing a delivered output > 5500lm
- ◆ **80,000** maintenance free hours at 25°C
- ◆ **Lower power consumption** than HID lamps
- ◆ **Lightweight** (9kg per module) lighting solution

HDN 106N				
Version*	Beam Pattern	Light (CCT)	Cable Entries	Other Options
E – EM (48 LEDs)	N – Narrow	W – Cool White (5700K)	0 – M20	04 – RAL 7035 (Grey)
ES – EM/Std (96 LEDs)	M – Medium	X – Warm White (3000K)	5 – M25	FG – Glass front cover
SES – Std/EM/Std (144 LEDs)	W – Wide			
SEES – Std/EM/EM/Std (192 LEDs)	X – Extra Wide			

\*For alternative arrangements please contact Chalmit Internal Sales.

Typical ordering reference: HDN106NEMW004



## Our LED Product Range



### Over 30 individual products

Offering the full spectrum of product types for Zone 1, Zone 2 and Industrial applications from Floodlighting to Highbay, Bulkheads and Streetlighting; there really is no reason not to embrace the benefits of LED lighting fully.

With less energy required to power our impressive products you will enjoy both cost savings and environmental savings too with some of our LED products having the ability to last up to 10 times longer than their conventional counterpart. This has the welcome bonus of less maintenance down time associated with our products too.

Take a look at our impressive and rapidly growing range of LED lighting products today.

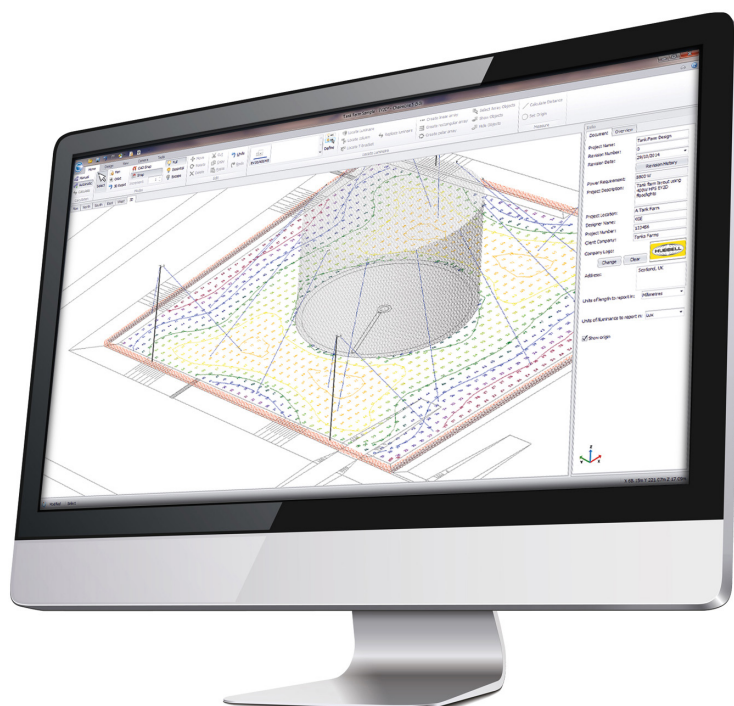
Download your free digital copy of our latest LED Solutions Catalogue at  
**[www.chalmit.com](http://www.chalmit.com)**

# Lighting Design Software

Chalmit's Hazardous Area and Industrial Lighting Design Software has been upgraded to **ChalmLite 5**.



- Free to download
- Familiar Windows based user interface
- Easily produce complex lighting design layouts accurately with ease
- Improved drawing format support minimises need for additional software
- Estimator calculators for Interior, Exterior and Walkway scenarios
- New comparison tool to compare up to 3 products and aid product selection



 ChalmLite 5 is free of charge



Scan here to find out more

**Go to [www.chalmit.com](http://www.chalmit.com) to download now**



Follow us

Product design and specifications are subject to change. Please check the Chalmit website for latest specifications.







Harsh & Hazardous

## Hubbell Harsh & Hazardous

Extreme environments demand superior performance, which is why you will find Hubbell products and systems installed in some of the most arduous and safety critical locations worldwide.

**The Hubbell Harsh & Hazardous group combines dedicated, market leading brands within the Hubbell portfolio to provide a complete package for companies operating in some of the toughest environments on the planet.**

We are committed to providing quality products and services that will meet and exceed your expectations. Our principal activities include the design and manufacture of rugged and hard wearing products. These include telephones and communication products, lighting, control gear and electrical connection products, all designed to operate primarily in extreme outdoor, hazardous and corrosive areas.

## Our Brands

All of our brands are long established and well respected businesses within each of their industries. Our primary industry sectors include: Oil & Gas, Petrochemical, Industrial, Marine, Military, Transport and Commercial.



## Corporate Information

Hubbell Incorporated HQ is based in Connecticut, U.S.A. and you can find out more information about the Hubbell Group on our corporate website at [www.hubbell.com](http://www.hubbell.com)





## Contact Details

### United Kingdom

Chalmit PO Box 5575 Glasgow G52 9AP UK  
Tel: +44 (0) 141 882 5555 Fax: +44 (0) 141 883 3704 Email: [info@chalmit.com](mailto:info@chalmit.com)

### Middle East

Building No. 5EA Office No. G03  
Dubai Airport Free Zone (DAFZ) PO Box 23529 Dubai UAE  
Tel: +971 (0)4 609 1222 Email: [middle-east@chalmit.com](mailto:middle-east@chalmit.com)

### Asia Pacific

130 Joo Seng Road #03-02 Olivine Building Singapore 368357  
Tel: +65 6282 2242 Fax: +65 6284 4244 Email: [asia-pacific@chalmit.com](mailto:asia-pacific@chalmit.com)

### Korea

512 Hyosung Intellian 681-3 Deungchon Dong  
Kangseo-Ku Seoul 157-030 Korea  
Tel: +82 2 2063 3719 Fax: +82 2 2603 7386  
Mob: +82 10 9977 6349 Email: [korea@chalmit.com](mailto:korea@chalmit.com)

### China

Room H/I 18F No. 728 Pudong Avenue  
Shanghai International Ocean and Finance Building Shanghai 200120 P.R. China  
Tel: (86 21) 3392 6550 ext. 318 Fax: (86 21) 3392 6551  
Mob: +(86 139) 1829 4175 6349 Email: [china@chalmit.com](mailto:china@chalmit.com)