

LC Adapters

LC Duplex; recommended cut out: 0.525" X 0.390"

Color	① Snap mount, clip installed (6-pack), zirconia ceramic sleeve	② Screw mount, clip installed, mounting screws included (6-pack), zirconia ceramic sleeve
Aqua	FANLCDSC6AQ	FANLCDSS6AQ
Beige	FANLCDSC6BE	FANLCDSS6BE
Black	FANLCDSC6BK	FANLCDSS6BK
Blue	FANLCDSC6B	FANLCDSS6B
Green	FANLCDSC6GN	FANLCDSS6GN
Orange	FANLCDSC6OR	FANLCDSS6OR
Red	FANLCDSC6R	FANLCDSS6R
Yellow	FANLCDSC6Y	FANLCDSS6Y



①



②

LC Quad; recommended cut out: 1.024" X 0.375"

Color	③ Snap mount, clip installed (6-pack), zirconia ceramic sleeve	④ Screw mount, clip installed, mounting screws included (6-pack), zirconia ceramic sleeve
Aqua	FANLCQSC6AQ	FANLCQSS6AQ
Beige	FANLCQSC6BE	FANLCQSS6BE
Black	FANLCQSC6BK	FANLCQSS6BK
Blue	FANLCQSC6B	FANLCQSS6B
Green	FANLCQSC6GN	FANLCQSS6GN
Orange	FANLCQSC6OR	FANLCQSS6OR
Red	FANLCQSC6R	FANLCQSS6R
Yellow	FANLCQSC6Y	FANLCQSS6Y



③



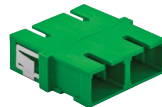
④

Note: Any green zirconia LC or SC adapter is suitable for APC applications. See color chart on page G02.

SC Adapters

SC Duplex; recommended cut out: 1.024" X 0.375"

Color	⑤ Snap mount, clip installed (6-pack), zirconia ceramic sleeve	⑥ Screw mount, clip installed, mounting screws included (6-pack), zirconia ceramic sleeve
Aqua	FANSCDSC6AQ	FANSCDSS6AQ
Beige	FANSCDSC6BE	FANSCDSS6BE
Black	FANSCDSC6BK	FANSCDSS6BK
Blue	FANSCDSC6B	FANSCDSS6B
Green	FANSCDSC6GN	FANSCDSS6GN
Orange	FANSCDSC6OR	FANSCDSS6OR
Red	FANSCDSC6R	FANSCDSS6R
Yellow	FANSCDSC6Y	FANSCDSS6Y



⑤



⑥

SC Simplex; recommended cut out: 0.525" X 0.390"

Color	⑦ Snap mount, clip installed (6-pack), zirconia ceramic sleeve	⑧ Screw mount, clip installed, mounting screws included (6-pack), zirconia ceramic sleeve
Aqua	FANSCSSC12AQ	FANSCSS12AQ
Beige	FANSCSSC12BE	FANSCSS12BE
Black	FANSCSSC12BK	FANSCSS12BK
Blue	FANSCSSC12B	FANSCSS12B
Green	FANSCSSC12GN	FANSCSS12GN
Orange	FANSCSSC12OR	FANSCSS12OR
Red	FANSCSSC12R	FANSCSS12R
Yellow	FANSCSSC12Y	FANSCSS12Y



⑦



⑧

Note: Any green zirconia LC or SC adapter is suitable for APC applications. See color chart on page G02.