



① ② ③



①



②



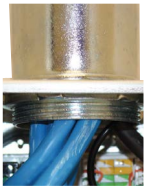
③

Gangable AV Wall Boxes, 2- and 3-Gang

| Box | Dimensions | Knockouts Top* | Knockouts Bottom* | Knockouts Back | Catalog No. |
|---|----------------------------------|---------------------------------|--|---------------------|-----------------|
| 2-Gang, 2" KO, 54in ³ capacity | H: 4 1/4" W: 4 1/16" D: 4" | (2) 1/2" (2) 1/2" - 3/4" TKO | (1) 1", 1 1/4", 1 1/2" and 2" | (2) 1/2" - 3/4" TKO | ① HBL985 |
| 3-Gang, 2" KO, 79in ³ capacity | H: 4 1/4" W: 5 7/8" D: 4" | (3) 1/2" (3) 1/2" - 3/4" TKO | (1) 1/2" (1) 1/2" - 3/4" TKO (1) 1", 1 1/4", 1 1/2" and 2" | (3) 1/2" - 3/4" TKO | ② HBL986 |

Low Voltage AV Wallbox Partitions

| Compatible With | Compatible Mud Ring Depth | Description | Quantity | Catalog No. |
|-------------------|---------------------------|---------------------------|----------|------------------|
| HBL985 and HBL986 | 1/2", 3/4" and 1 1/4" | Solid divider | 1 | ③ HBL989 |
| | | With pass-thru capability | 1 | HBL989AVD |



Front Back (Cutaway)

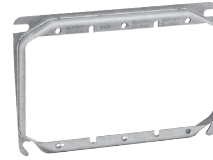
Cutaway images are for demonstration purposes only.



④



⑤



⑥



⑦

2-Gang Large Capacity Wall Box, 66.7 Cubic Inch Capacity

| Description | Dimensions | Knockouts Sides* | Knockouts Back* | Catalog No. |
|------------------------|---------------------------------------|--|-------------------------------|-----------------|
| Square 2-gang wall box | H: 4 1/16" W: 4 1/16" D: 3 1/4" | (2) 3/4" - 1" TKO; (2) 1" - 1 1/4" TKO; (2) 1" - 2" conc. KO | (2) 3/4" - 1" TKO (2) 1/2" | ④ HBL260 |

Note: Use with industry standard 4 1/16" square mud rings for 1- or 2-gang applications.

3-Gang Large Capacity Wall Box, 113.3 Cubic Inch Capacity

| Description | Dimensions | Knockouts Sides* | Knockouts Back* | Catalog No. |
|------------------------------|--------------------------------------|--|---|-----------------|
| Square 2- or 3-gang wall box | H: 4 1/16" W: 7 3/4" D: 3 1/4" | (4) 1/2" - 3/4" TKO, (4) 3/4" - 1" TKO, (2) 1" - 1 1/4" TKO, (2) 1" - 2" conc. KO | (2) 1/2" - 3/4" TKO, (2) 3/4" - 1" TKO, (2) 1" - 1 1/4" TKO | ⑤ HBL263 |

Note: Use with industry standard 4" square mudrings for 1- or 2-gang applications.

2-Gang Mud Rings (Compatible with HBL260)

| Description | Capacity | Catalog No. |
|---------------|---------------------|---------------|
| 5/8" height | 7.3in ³ | HBL818 |
| 3/4" height | 8.8in ³ | HBL840 |
| 1" height | 12.0in ³ | HBL819 |
| 1 1/4" height | 15.0in ³ | HBL820 |

3-Gang Mud Rings (Compatible with HBL263)

| Description | Capacity | Catalog No. |
|---------------|---------------------|-----------------|
| 1/2" height | 10.1in ³ | ⑥ HBL792 |
| 5/8" height | 12.3in ³ | HBL793 |
| 1 1/4" height | 24.3in ³ | HBL794 |

Low Voltage Partitions

| Compatible With | Compatible Mud Ring Depth | Description | Quantity | Catalog No. |
|-------------------|---------------------------|---------------------------|----------|------------------|
| HBL260 and HBL263 | 1/2", 3/4" and 1 1/4" | Solid divider | 1 | ⑦ HBL981 |
| | | With pass-thru capability | 1 | HBL981AVD |

*TKO (Tangential Knockout)