

# Step Lights LED

5w 3000K color temperature with 84+ CRI and a 120° beam spread. LED step/wall lights are available in a vertical or horizontal configuration for mounting into a single-gang wallbox.

## FEATURES

- Integral power supply module in a compact package.
- Consumes less than 5w of power per fixture.
- Beam spread: 120 degrees.
- cCSAus listed for wet locations.
- Warm white 3000K LED's included.
- 84+ CRI.

**P6827-0930K** Brushed Nickel  
**P6827-2030K** Antique Bronze  
**P6827-3030K** White  
**P6827-3130K** Black  
 Louvered horizontal step/wall light.  
 Wet location listed.  
 5-1/4" W. , 3-1/2" ht.  
 5w LED module included.



P6828-0930K



P6828-2030K

**P6828-0930K** Brushed Nickel  
**P6828-2030K** Antique Bronze  
**P6828-3030K** White  
**P6828-3130K** Black  
 Louvered vertical step/wall light.  
 Wet location listed.  
 3-1/2" W. , 5-1/4" ht.  
 5w LED module included.



P6828-3030K



P6828-3130K

**P6829-0930K** Brushed Nickel  
**P6829-2030K** Antique Bronze  
**P6829-3030K** White  
**P6829-3130K** Black  
 Vertical step/wall light.  
 Wet location listed.  
 2-7/8" W., 4-1/2" ht.  
 5w LED module included.



P6829-2030K



P6829-0930K

**P6832-0930K** Brushed Nickel  
**P6832-2030K** Antique Bronze  
**P6832-3030K** White  
**P6832-3130K** Black  
 Horizontal step/wall light.  
 Wet location listed.  
 2-7/8" ht., 4-1/2" W.  
 5w LED module included.



P6832-0930K



P6827-0930K

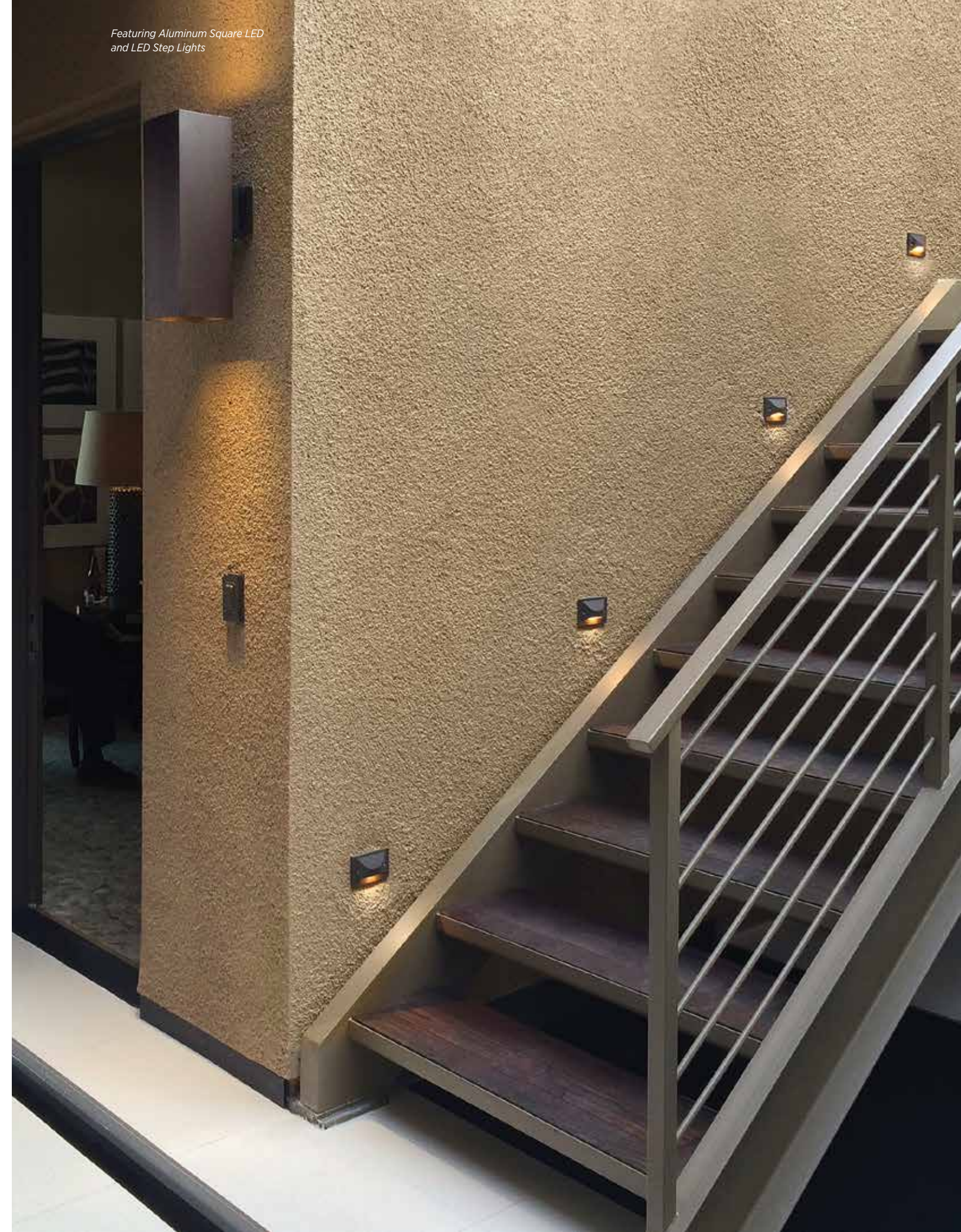


P6832-3130K



P6827-3030K

Featuring Aluminum Square LED  
 and LED Step Lights



# Steps, Corridors & Wall Lights

## Safe Light At Night.

## Indoor Step, Outdoor Step & Wall Lights **LED**

5w 3000K color temperature with 84+ CRI and a 120° beam spread. LED step/wall lights are available in a vertical or horizontal configuration for mounting into a single-gang wallbox.

### FEATURES

- Integral power supply module in a compact package.
- Consumes less than 5w of power per fixture.
- Beam spread: 120 degrees.
- cCSAus listed for wet locations.
- Warm white 3000K LED's included.
- 84+ CRI.

**P6827-0930K** Brushed Nickel  
**P6827-2030K** Antique Bronze  
**P6827-3030K** White  
**P6827-3130K** Black  
 Louvered horizontal  
 5-1/4" W., 3-1/2" ht.  
 5w LED module included.



**P6828-0930K** Brushed Nickel  
**P6828-2030K** Antique Bronze  
**P6828-3030K** White  
**P6828-3130K** Black  
 Louvered vertical  
 3-1/2" W., 5-1/4" ht.  
 5w LED module included.



**P6832-0930K** Brushed Nickel  
**P6832-2030K** Antique Bronze  
**P6832-3030K** White  
**P6832-3130K** Black  
 Horizontal step/wall light  
 4-1/2" W., 2-7/8" ht.  
 5w LED module included.



**P6829-0930K** Brushed Nickel  
**P6829-2030K** Antique Bronze  
**P6829-3030K** White  
**P6829-3130K** Black  
 Vertical step/wall light  
 2-7/8" W., 4-1/2" ht.  
 5w LED module included.



U.S. Patent #. 6357891, 5379199

## Indoor & Protected Outdoor

Spring-held white louver faceplate. Metal housing has 1/2" I.P. conduit entry. For indoor and protected outdoor use. UL listed for damp locations. Sheet rock or dry wall installations.

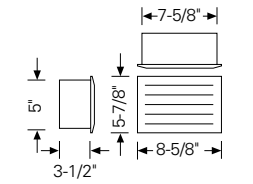
**P6820-30TG\*** White  
**P6820-31TG\*** Black  
 Non-IC  
 Therma-Gard protection.  
 Porcelain socket.  
 One medium base lamp,  
 60w max.



P6820-30TG



P6820-31TG



P6820-30 & P6826-30

\* Requires accessory bar hanger kit, P8716-01 for installation to wood studs.

## Indoor Steplights **LED**

The mini-steplights are ideal for indoor residential applications. Energy efficient steplights include both vertical and horizontal louvers and are available in four finishes.

**LED STEP LIGHT**  
**P660003-009-30K** Brushed Nickel  
**P660003-020-30K** Antique Bronze  
**P660003-028-30K** White  
**P660003-031-30K** Black  
 2-3/4" W., 4-1/2" ht.  
 1w LED, 3000K, 90CRI, 12 lumens.



P660003-009-30K

P660003-020-30K



P660003-028-30K

P660003-031-30K