

ALPHA TRAK®

Line Voltage Adjustable Track Heads

Track mounting hardware and fixture accessories appear on pages 810-813.

Brushed Nickel

Track heads in a brushed nickel finish add a level of aesthetic appeal to both residential and retail spaces.

P6112-09 Brushed Nickel
2-9/16" dia., 5-1/4" ht.
One MR16 lamp, 50w max., included. GU10 twist lock base.

P6115-09WB Brushed Nickel
Die-cast gimbal track head
2-7/8" dia., 5-1/4" ht.
One 120V MR16 lamp, 50w max., included. GU10 twist lock base.

P6117-09 Brushed Nickel
Die-cast gimbal track head
4-5/8" dia., 8-1/4" ht.
One PAR30, 75w max.



High Tech

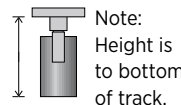
Excellent for residential and retail applications. Lampholder rotates 360° horizontal, 90° up from vertical.

P6325-28 Bright White
P6325-31 Black
2-3/4" dia., 5-1/4" ht.
One 75w PAR16.

P6326-28 Bright White
P6326-31 Black
2-3/4" dia., 5-1/2" ht.
One 50w PAR20.

P6327-28 Bright White
P6327-31 Black
4" dia., 6-1/8" ht.
One 75w PAR30 short neck.

P6369-28 Bright White
5" dia., 8" ht.
One 250w PAR38.



Note:
Height is to bottom of track.

See pages 810-813 for accessories and track.

Flair

White Flair Alpha Trak track head with 360° horizontal rotation and 90° vertical rotation and black baffle. Heads can be easily repositioned on the track to provide lighting in different areas of the room. Excellent for both residential and retail locations

P9200-28 Bright White
P9200-31 Black
Complete with black baffle.
3-1/2" dia., 7-5/8" ht.
One 50w PAR20, one 50w R 20, or one 75w PAR16.

P9201-28 Bright White
P9201-31 Black
Complete with black baffle.
4-3/8" dia., 8-3/4" ht.
One 75w PAR30 long neck or one 65w BR30.



Free Form

Clean design to accommodate the exposed portion of the PAR lamps. For retail and accent locations. Lampholder rotates 360° horizontal, 90° vertical.

P6328-28 Bright White
3-1/4" dia., 4-1/8" ht.
One 50w PAR20 or 75w PAR16.

P6329-28 Bright White
4-5/8" dia., 7-7/8" ht.
One 75w PAR30 short neck.



ALPHA TRAK®

Line Voltage Adjustable Track Heads

Track mounting hardware and fixture accessories appear on pages 810-813.

Universal

Simple design provides minimal obstruction into the visual space. Lampholder rotates 360° horizontal, 90° vertical.

P6280-28 Bright White
P6280-31 Black
 2" dia., 5-7/8" ht.
 Any medium base PAR or R lamp except PAR30 short neck up to 300w max.



Flatback

Flat Back Alpha Trak track head with 360° horizontal rotation and 90° vertical rotation and black baffle. Heads can be easily repositioned on the track to provide lighting in different areas of the room. Excellent for both residential and retail locations.

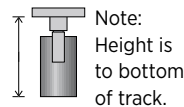
P9205-28 Bright White
P9205-31 Black
 Complete with black baffle.
 3-1/2" dia., 7-1/4" ht.
 One 50w PAR20, one 50w R 20, or one 75w PAR16.



P9206-28 Bright White
P9206-31 Black
 Complete with black baffle.
 4-3/8" dia., 9" ht.
 One 75w PAR30 long neck or one 65w BR30.



P9207-28 Bright White
P9207-31 Black
 Complete with black baffle.
 6" dia., 10-7/8" ht.
 One 250w PAR38, one 300w R 40, or one 250w BR40.



Note:
 Height is to bottom of track.

See pages 810-813 for accessories and track.

Roundback

Round Back Alpha Trak track head with 360° horizontal rotation and 90° vertical rotation and black baffle. Excellent for both residential and retail locations.

P9203-28 Bright White
P9203-31 Black
 Complete with black baffle.
 3-1/2" dia., 7-1/4" ht.
 One 50w PAR20, one 50w R 20, or one 75w PAR16.



P9204-28 Bright White
P9204-31 Black
 Complete with black baffle.
 4-3/8" dia., 8" ht.
 One 75w PAR30 long neck or one 65w BR30.

Shallow Profile

Non-metallic, architecturally-designed molded fitter. Designed for PAR20 and PAR30 lamps. Lampholder rotates 360° horizontally, 90° vertically.

P9219-28 Bright White
P9219-31 Black
 3-1/2" dia., 5-3/4" ht.
 One 50w PAR20.



P9220-28 Bright White
P9220-31 Black
 4-3/4" dia., 6" ht.
 One 75w PAR30.



Alpha Trak® Kits

All Alpha Trak® Kits come with three track heads, 4' track, canopy, dead end, feed and mounting hardware.

P9215-28 Bright White
 Track heads complete with black baffle.
 4-3/8" dia., 9" ht.
 Three 75w PAR30 long neck or three 65w BR30.



P9216-28 Bright White
 Track heads complete with black baffle.
 4-3/8" dia., 8-3/4" ht.
 Three 75w PAR30 or three 65w BR30.



ALPHA TRAK® Accessories

Alpha Trak® Sections

Alpha Trak single-circuit track sections are extruded aluminum with flat copper conductors for positive contact and can be field cut to required lengths. All have easy-guide polarity notch. Designed for 120-volt supply with 20 amp capacity (2,400 watts). Order power feeds and system hardware separately as required. All track sections include two dead ends and mounting hardware.

P9103-09 Brushed Nickel
P9103-28 Bright White
P9103-31 Black
 2' L., 1-1/8" W., 7/8" ht.



Brushed Nickel

P9104-09 Brushed Nickel
P9104-28 Bright White
P9104-31 Black
 4' L., 1-1/8" W., 7/8" ht.



Bright White

P9105-09 Brushed Nickel
P9105-28 Bright White
P9105-31 Black
 8' L., 1-1/8" W., 7/8" ht.



Black

P9106-09 Brushed Nickel
P9106-28 Bright White
P9106-31 Black
 12' L., 1-1/8" W., 7/8" ht.



Cross section of track

Alpha Trak® Power Feeds

FLOATING CANOPY

P9123-09 Brushed Nickel
P9123-28 Bright White
P9123-31 Black
 Floating canopy mounts anywhere on track, includes power feed and covers. Fits over standard outlet box. Includes one P8717 and P9122-28 dead end.



P9123-28

"ANYWHERE" POWER FEED

P8730-09 Brushed Nickel
P8730-31 Black
P9108-28 Bright White
 "Anywhere" power feed snaps into place at any point along the track. Canopy kit required P8753, P91007. Has 8" leads. Includes one P8717 dead end.*



P8730-09

T-BAR END FEED

P8760-09 Brushed Nickel
P8760-31 Black
P9109-28 Bright White
 T-bar end feed with canopy cover for suspended ceilings. (Use P8770-01 slotted outlet box.)



P8760-09

"ANYWHERE" POWER FEED

P8742-31 Black
P9121-28 Bright White
 "Anywhere" power feed with 3/8" Greenfield connector. Has 72" of wire. Includes one P8717 dead end.*



P8742-31
 P9121-28

END FEED

P8745-09 Brushed Nickel
P8745-28 Bright White
P8745-31 Black
 4 -1/2" sq.
 End feed with flush canopy.



P8745-31

TOP OR END FEED

P8746-09 Brushed Nickel
P8746-31 Black
P9110-28 Bright White
 Top or end feed for Romex, 3/8" Greenfield or 1/2" EMT.



P9110-28

Alpha Trak® System Hardware

CANOPY KIT - FLUSH MOUNT

P8753-09 Brushed Nickel
P8753-31 Black
P9107-28 Bright White
 Canopy Kit - Flush Mount. Mounting plate can be used anywhere along track. Slips between ceiling and track. Use with P8730, P9108 power feed.



P9107-28

SLOTTED OUTLET BOX

P8770-01
 4" slotted outlet box for suspended ceilings. For use with P8760 and P9109 T-bar end feed. Mounts into T-bar grid cross section.*



P8770-01

DEAD END

P8717-09 Brushed Nickel
P8717-31 Black
P9122-28 Bright White
 Dead end closes open end of track. Two dead ends already supplied with track sections.



P8717-28

SUSPENDED CEILING CLIPS

P8771-30 White
 Suspended ceiling clips. Use two for 2' or 4' track sections. Three for 8' track. Five for 12' track. For mounting track sections onto T-bar grid.



P8771-30

Alpha Trak® Connectors

For joining two or more track sections in straight runs, "L", "T", cross, square and "any angle" patterns. The connectors plug into track sections only one way to ensure positive polarization.

STRAIGHT CONNECTOR

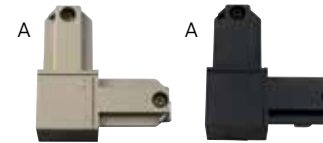
P8720-09 Brushed Nickel
P8720-31 Black
P9115-28 Bright White



P8720-09 P9115-28

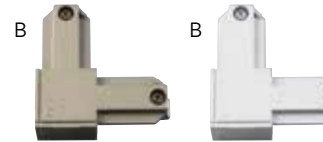
"L" CONNECTOR

A. Inside polarity
P8721-9109 Brushed Nickel
P8721-9131 Black
P9116-9128 Bright White



P8721-9109 P8721-9131

B. Outside polarity
P8721-8909 Brushed Nickel
P9116-8928 Bright White



P8721-8909 P9116-8928

"L" connector. Inside polarity type connector generally used. To identify polarity, orient connector to "L" shape and polarity grooves will intersect where indicated.

CROSS CONNECTOR

P8723-09 Brushed Nickel
P8723-28 Bright White
P8723-31 Black



P8723-31

"T" CONNECTOR

A. Inside-right polarity
P8722-9109 Brushed Nickel
P8722-9128 Bright White
P8722-9131 Black



B. Inside-left polarity

P8722-8909 Brushed Nickel
P8722-8928 Bright White
P8722-8931 Black



P8722-8928

"T" connector. Inside-right polarity type connector generally used. To identify polarity, orient connector to "T" shape and polarity grooves will intersect where indicated.

FLEX CONNECTOR

P8736-09 Brushed Nickel,
P8736-31 Black
P9117-28 Bright White
 Flex connector permits a variety of track layouts at almost any angle and variation of planes including wall-to-ceiling or on cathedral ceilings. Can flex to 90°.



P8736-09



P9117-28

*Not UL listed