



STARLINE II LED STREETLIGHT

..... *For Industrial Applications*



LED SOLUTIONS

..... For Harsh & Hazardous Locations



Quality, Reliability and Low Maintenance

Our LED Product Range

Chalmit has over a century's worth of experience in providing cutting edge lighting solutions to hazardous and marine markets. We understand the unique characteristics of LED technology and have a proven track record, pioneering the world's first Zone 1 LED luminaire; the NexLED back in 2005.

As a business we have invested in the development of solid state lighting technologies to provide solutions that meet the exacting requirements of the Oil, Gas, Renewables & Petrochemical industries.

The result is a proven, reliable and complete range of LED luminaires that compliment and enhance our fluorescent and HID products.

At the heart of each new design is our underlying philosophy - **Quality, Reliability and Low Maintenance.**



Elegant Design, Industrial Strength

Our Starline II LED street lights are designed to provide superior illumination for a wide range of industrial applications from roads to walkways. Featuring a lightweight and robust design, Starline II streetlights offer easy installation and maintenance – all in an elegant, cost effective package.



Mounting Options

The Starline II combines a low profile and lightweight design with multiple mounting options to provide a quick and easy way for customers to make the switch from HID to LED. The variety of mounting options includes; spigot, post-top (slip fitter) and wall mount.

Dark Sky Friendly

Efficiency is high on the agenda with the Starline II LED Streetlight. Designed to provide an asymmetric beam pattern, the Starline II provides efficient roadway illumination and minimises wasted upward light for less light pollution.

Built to Last

Combining a high grade aluminium alloy construction and an extensive ambient range of -40°C to $+55^{\circ}\text{C}$, our streetlight is built to withstand even the toughest industrial conditions. Plus, its very high LED lifetime of 130,000 hours means this light could last you over 14 years – even if on 24 hours a day.



STARLINE II

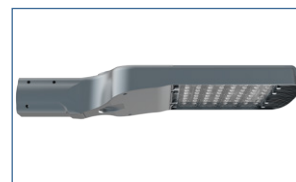
LED Streetlight

The **Starline II** LED perfectly combines innovations in heat management, optical performance and energy saving in a sleek exterior.

The ultimate solution to replace traditional HID sources with versatility and reliability. High power LEDs minimise energy and operating costs, while the low profile appearance and low weight allow the Starline II to be safely installed on new and existing infrastructure.

Mounting Options

Post Top/Slip Fitter. Side Entry Spigot. Wall Mount.



Standard Specification

Starline II LED Streetlight

Enclosure	Die cast aluminum alloy with RAL7030 grey polyester powder coat paint
Entry	Side entry as standard
Termination	Pre-installed flying leads
Installation	Spigot entry (48-60mm OD pole)
Control Gear	Electronic Driver
Colour Temperature (CCT)	5000K (Cool White)
Colour Rendering Index (Ra)	>70
Maintenance	Underside access, secured by socket heads
Ingress Protection	IP65 to EN 60529
Surge Protection	6kV
Electrical Supply	120-240V AC 50/60Hz

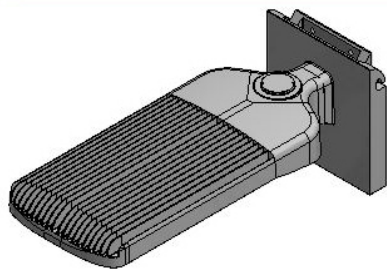
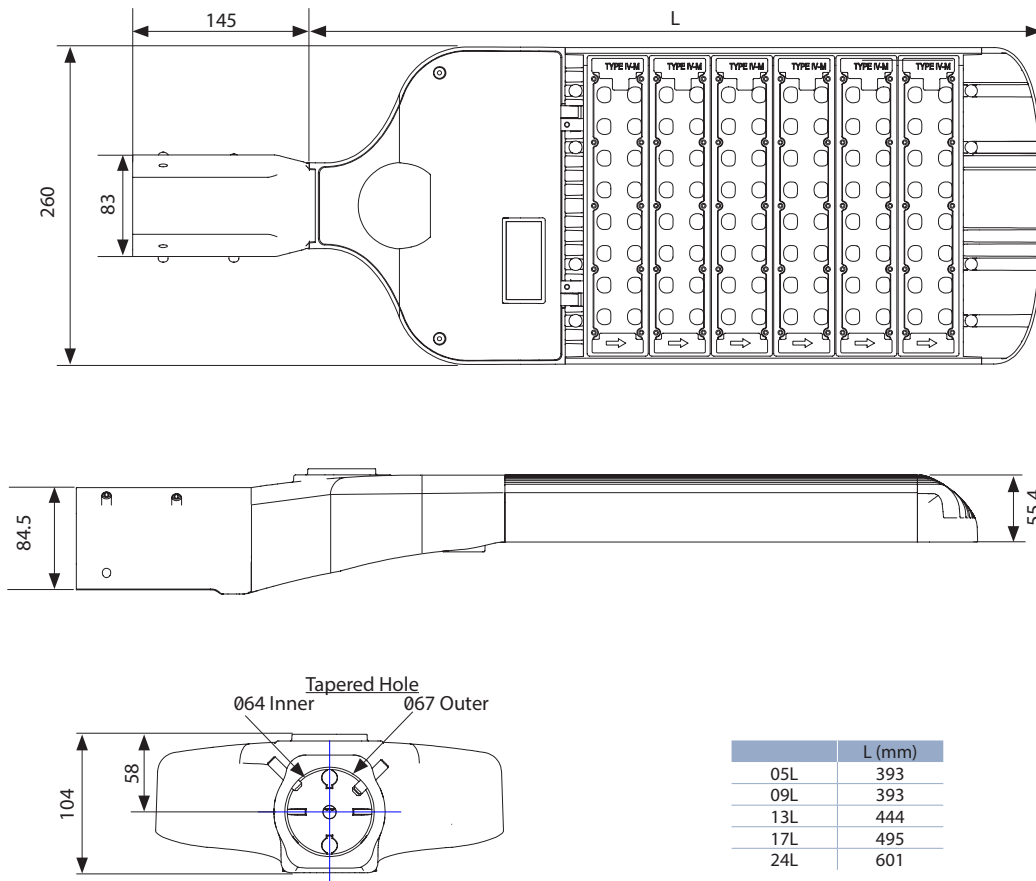
Features

- ◆ Highly **Energy Efficient**
- ◆ **Slim, elegant design**
- ◆ **Dark sky friendly**, no upward light
- ◆ **Lightweight** and low windage
- ◆ **130,000 maintenance free hours** at 25°C (L70)

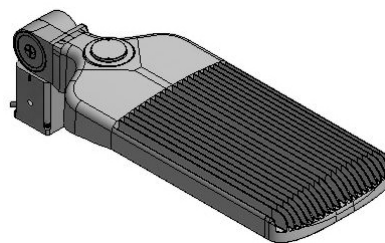
Std. Cat No.	Delivered Output	Power Consumption	Ambient °C	Weight
SL2I/05L/LE	4835 lm	40W	-40 to +55	5.0kg
SL2I/09L/LE	8923 lm	75W	-40 to +55	5.0kg
SL2I/13L/LE	13226 lm	120W	-40 to +55	6.0kg
SL2I/17L/LE	17355 lm	150W	-40 to +55	6.5kg
SL2I/24L/LE	24318 lm	200W	-40 to +55	8.0kg

Options - Suffix to Catalogue No

/SF	Slip Fitter mount (40-55mm OD column)	/WM	Wall mount
/10C	10m (3 core) cable - fitted for ease of installation [spigot entry only]		



Wall Mount



Slip Fitter (Post Top) Mount

Our LED Product Range



Over 30 individual products

Offering the full spectrum of product types for Zone 1, Zone 2 and Industrial applications from Floodlighting to Highbay, Bulkheads and Streetlighting; there really is no reason not to embrace the benefits of LED lighting fully.

With less energy required to power our impressive products you will enjoy both cost savings and environmental savings too with some of our LED products having the ability to last up to 10 times longer than their conventional counterpart. This has the welcome bonus of less maintenance down time associated with our products too.

Take a look at our impressive and rapidly growing range of LED lighting products today.

Download your free digital copy of our latest LED Solutions Catalogue at
www.chalmit.com

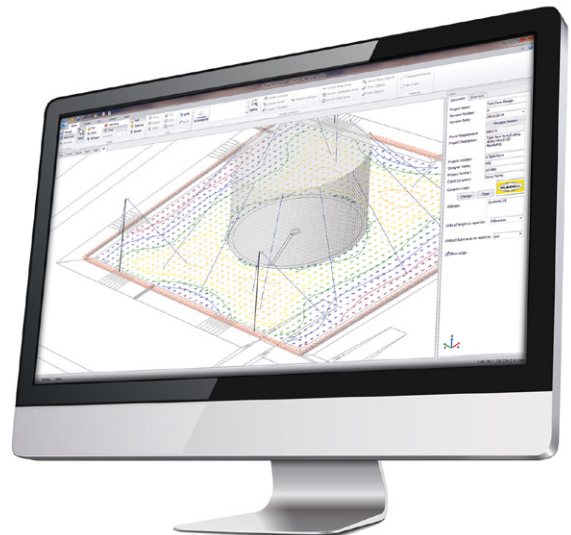
Lighting Design Software

Chalmit's Hazardous Area and Industrial Lighting Design Software **ChalmLite 6** has been developed specifically for the Harsh & Hazardous industry and is free to download.

CHALMLITE 6

With a simple Windows-based user interface and enhanced key features, the software allows users to create designs that range from simple to very complex layouts.

- Realistically rendered views
- Normal, escape and essential calculation facility
- Integrated CAD layer manager and CAD element tools
- Improved estimator, with single-page report option
- Luminaire selection by lumen range and hazardous classification



C6 ChalmLite 6 is free of charge

Go to www.chalmit.com to download now



Hubbell Harsh & Hazardous

Extreme environments demand superior performance, which is why you will find Hubbell products and systems installed in some of the most arduous and safety critical locations worldwide.

The Hubbell Harsh & Hazardous group combines dedicated, market leading brands within the Hubbell portfolio to provide a complete package for companies operating in some of the toughest environments on the planet.

We are committed to providing quality products and services that will meet and exceed your expectations. Our principal activities include the design and manufacture of rugged and hard wearing products. These include telephones and communication products, lighting, control gear and electrical connection products, all designed to operate primarily in extreme outdoor, hazardous and corrosive areas.

Our Brands

All of our brands are long established and well respected businesses within each of their industries. Our primary industry sectors include: Oil & Gas, Petrochemical, Industrial, Marine, Military, Transport and Commercial.



Corporate Information

Hubbell Incorporated HQ is based in Connecticut, U.S.A. and you can find out more information about the Hubbell Group on our corporate website at www.hubbell.com



Contact Details

United Kingdom

Chalmit PO Box 5575 Glasgow G52 9AP UK
Tel: +44 (0) 141 882 5555 Fax: +44 (0) 141 883 3704 Email: info@chalmit.com

Middle East

Building No. 5EA Office No. G03
Dubai Airport Free Zone (DAFZ) PO Box 23529 Dubai UAE
Tel: +971 (0)4 609 1222 Email: middle-east@chalmit.com

Asia Pacific

130 Joo Seng Road #03-02 Olivine Building Singapore 368357
Tel: +65 6282 2242 Fax: +65 6284 4244 Email: asia-pacific@chalmit.com

Korea

512 Hyosung Intellian 681-3 Deungchon Dong
Kangseo-Ku Seoul 157-030 Korea
Tel: +82 2 2063 3719 Fax: +82 2 2603 7386
Mob: +82 10 9977 6349 Email: korea@chalmit.com

China

Room H/I 18F No. 728 Pudong Avenue
Shanghai International Ocean and Finance Building Shanghai 200120 P.R. China
Tel: (86 21) 3392 6550 ext. 318 Fax: (86 21) 3392 6551
Mob: +(86 139) 1829 4175 6349 Email: china@chalmit.com