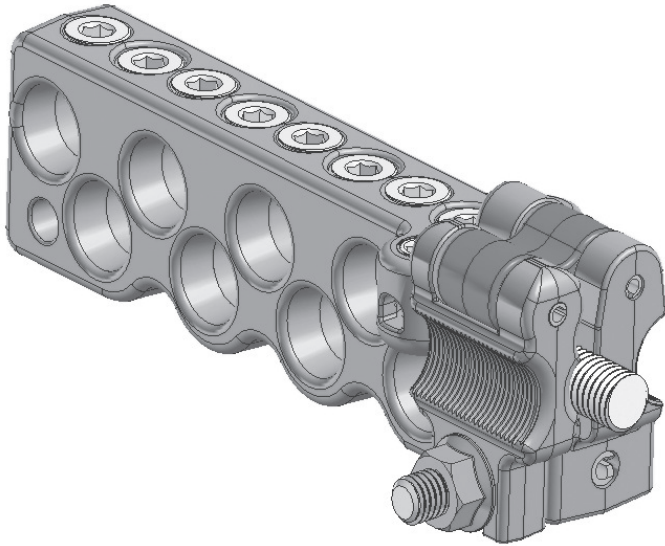




# SET SCREW BAR TRANSFORMER CONNECTORS TOGGLE LATCH

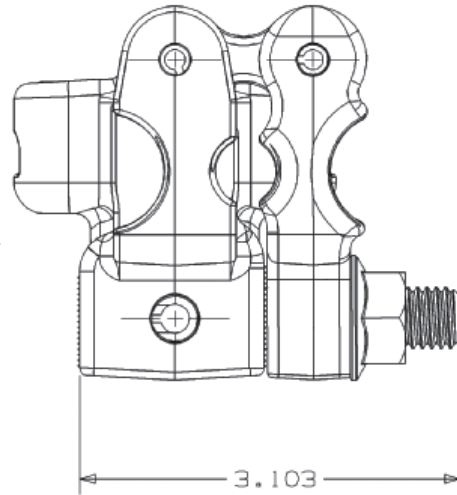
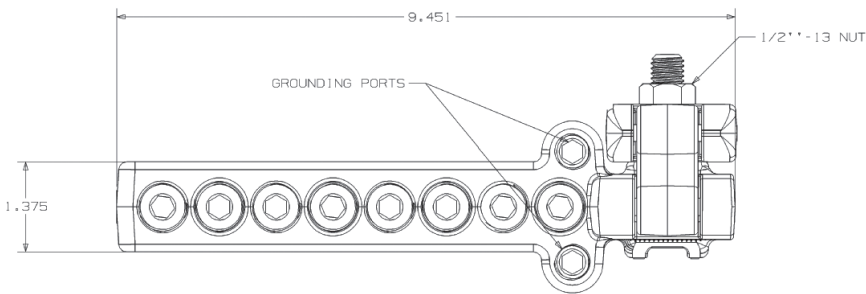
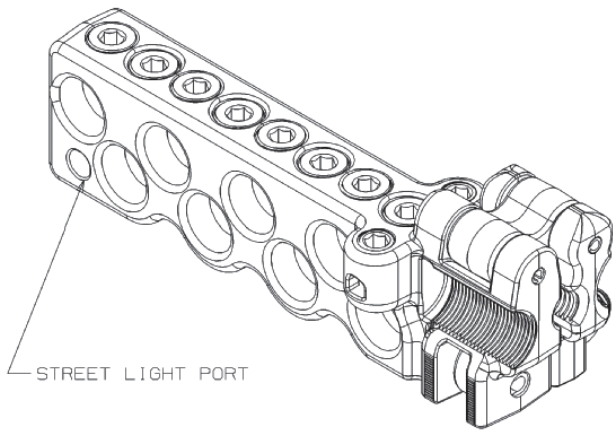
ALUMINUM  
UTSB



- For connecting secondary underground applications to transformer studs.
- Innovative “Toggle Latch” mechanism provides unmatched ease of installation, along with superior electrical performance.
- One part accepts both 5/8”-11 and 1”-14 threads.
- Reduced inventory; one part accepts both 5/8”-11 and 1”-14 thread transformer studs.
- Oxide Inhibiting Compound provided as standard in stud and tap holes.
- 5/16” allen set screws provide constant pressure on conductors.
- Testing meets or exceeds ANSI C119.6 Class “A” tests.
- Redundant ground ports provided for use on neutral phase connections.
- Toggle nut is 3/4” across flats, fits standard GP223 Speed Wrench.

**Material:** **Body** - Aluminum Alloy  
**Hardware** - High Strength Steel  
**Boot/Cover** - Poly-vinyl Chloride (PVC)

**Note:** Not suitable for submersible installations.



## Product Data & Conductor Size

CATALOG NUMBER	TRANSFORMER STUD SIZES	CONDUCTOR RANGE			MAIN PORTS	STREET LIGHT PORTS	GROUND PORTS	PACKAGING PER BOX	
		MAIN PORTS	STREET LIGHT PORT	REDUNDANT GROUND				UNITS	WEIGHT (LBS)
UTSB8500L	5/8”-11 & 1”-14”	#6 SOL - 500 MCM	#12 SOL - 1/0 SOL	#12 SOL - #2 SOL	8	1	2	12	36
		0.162” - 0.813”	0.081” - 0.325”	0.081” - 0.258”					

NOTE: Add suffix “C” for clear PVC cover included in package “UTSB8500CL. Factory applied inhibitor (HTJC) included standard.  
Cover Part Number: CTL8500

DD  
14