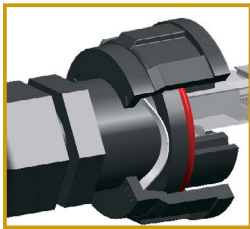
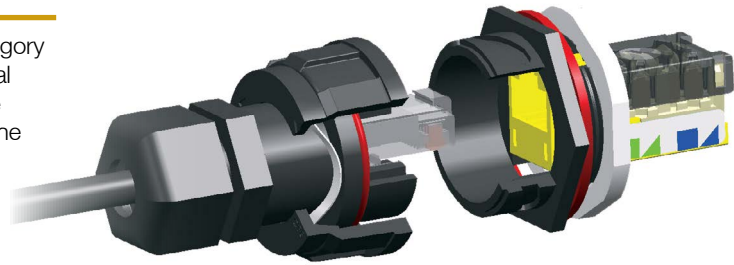


Features and Benefits

HI-Impact Industrial Ethernet Connectors

Hubbell's Industrial Ethernet System provides leading edge Category 5e and 6 network transmission performance suitable for industrial and other harsh environments. This system incorporates the use of our standard data connectivity jacks which feature our keystone latching mechanism, in a rugged sealed housing providing IP67 rated protection.

Extend your LAN to include automation equipment and manufacturing or process control equipment. Utilize the Hubbell system to provide added protection in harsh environments such as convention centers, food processing plants, outdoor billboards and display screens, medical and other environments which require added protection from moisture, corrosion, dust-debris, vibration and chemicals.



Housing Design

- Housing made from high impact polymer
- O-rings for moisture protection
- Sealed connection is IP67 rated



Internal Design

- Category 6 and 5e component connectors
- Standard Hubbell Keystone latching system



Industrial Ethernet Connectors

Description	Cat. 6	Cat. 6 Inline Coupler
Connector	HI6	HI6C



Industrial Ethernet Patch Cords and Plugs

Description	Catalog Number
HI-Impact RJ-45 to standard RJ-45.	HI603AE*
HI-Impact RJ-45 on both ends.	HI603EE*
Standard RJ-45 on both ends.	HI603AA*

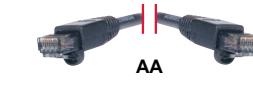
Note: *Additional lengths in feet: 05, 07, 10, 15, 20, 25, 30, 35, 40, 45, 50.



AE



EE



AA

Coupler Housing and Connector Cap

Description	Catalog Number
HI-Impact coupler housing is a perfect solution for temporary and flexible work areas where single port drops are needed. Add any HI-Impact connector to support your application.	HICH
Connector Cap	HIC



HICH



HIC

HISF11

HI-Impact Wallplates

Description	1-Gang 1-Port Opening	1-Gang 2-Port Openings	2-Gang 2-Port Openings	2-Gang 4-Port Openings
Stainless steel wallplate.	HISF11	HISF12	HISF22	HISF24

Valox® is a trademark of SABIC Innovative Plastics, acquired from General Electric Company.

Environmental Specifications

Ingress Protection:	NEMA TYPE 4X (connectors), IP67 and IP66 (dust/water), IP55 (plates).
Corrosion:	Resistant to most common chemicals, oils and cleaning agents.
HI-Impact Housing:	UV resistant.
Temperature Range:	TIA/EIA-568-B.2 -25°C to 70°C.

Material

HI-Impact Housing:	Valox®, UL 94V-0.
Nose Contacts:	Beryllium copper with a minimum of 50 micro-inch gold plating over nickel under plating.

Mechanical

Vibration	
Frequency Range:	10-500Hz.
Acceleration:	5g (operational).
Mating Cycles:	750 minimum.
UL 1863 compliant.	

Electrical

ANSI/TIA/EIA-568-B.2-1 (Cat. 6 and 5e).
Supports TIA-1005 Industrial Telecommunications Infrastructure.