

Typical Applications Include:

Power Generators, Spas, High Pressure Washers, Power Centers, Refineries and Mobile Power.



The sensing module functions interdependently with a magnetic branch circuit breaker. The module monitors the electrical circuit by use of an external differential current transformer. No direct load is present at the module. In the event of a ground fault, the load is interrupted by way of the hydraulic magnetic circuit breaker utilizing a shunt trip coil.

This line of Sensing Modules is rated from 1 to 50 Amps and circuit current-carrying conductors from 1 to 3 poles.

Product is available with an automatic or manual “safe start” reset feature. The enclosure, when mounted with the supplied gasket, achieves a UL NEMA Type 4X Rating. This module and breaker system is ideal for portable generator integration protecting all outlets on a generator. This system meets the proposed requirements for generators Underwriters Laboratory Standard 2201. UL/cUL 943 Listed, Class A 4-6mA trip level and UL1053 Compliant.



GFSMST120A

GFCI Sensing Module, 50A Maximum

Description	Catalog Number
120V AC Sensing Module Auto	GFSMST120A

GFCI Sensing Module Circuit Breakers

Catalog Number Configurator

Ground Fault Sensing Module Circuit Breaker	A/C Voltage	Amperage	Number of Poles	Sensing Module Required
GFSMCB	120	1 to 50	1	GFSMST120A
	120		2	
	120/240		2	
	120/240		3	

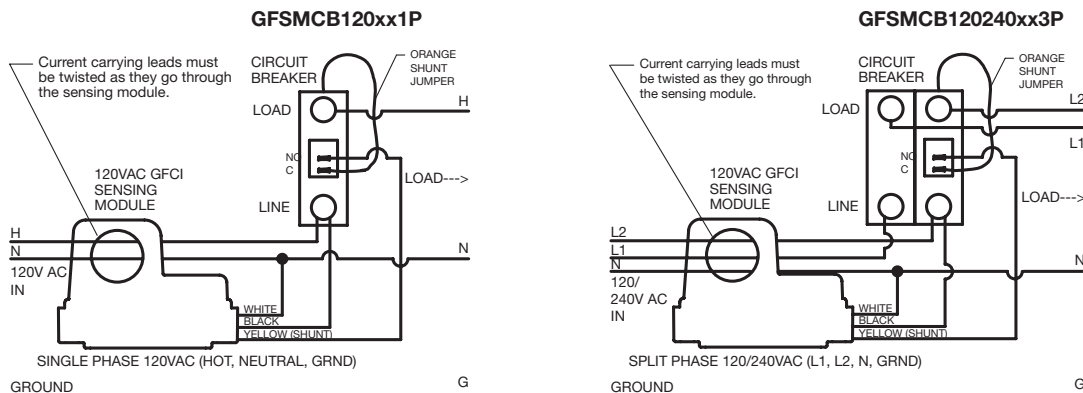


GFSMCB120401P

Example Catalog Numbers: **GFSMCB120401P:** 120V, 40A, 1 Pole
GFSMCB120240203P: 120/240V, 20A, 3 Pole

*Note: Voltage tolerance +10% / -15%.
 Consult factory for other available configurations.*

Wiring Schematics



Dimensions in Inches (mm)