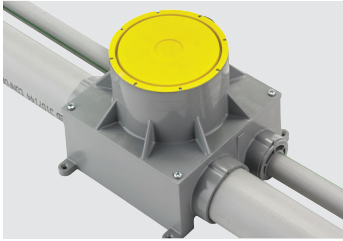
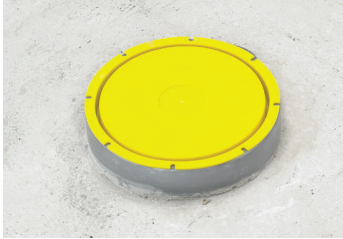


The Next Big Step In Innovation



Locate installation area and connect conduits



Pour concrete



Cut box top level with concrete



Install flooring



Install Adjustable Mounting Cup and level with finished flooring
CFBS1R4CUP



Wire devices into box



Finish with cover
CFBS1R4CVR

Installing the Fully Adjustable Mounting Cup and Level with Finished Flooring

During a concrete pour installation a floor box can become buried, other times the thickness of the floor covering can change. We have solved these issues with the integral, patented, adjustable mounting cup which adjusts the device mounting depth to 3 inches to accommodate any plug, no matter the floor thickness. Additionally, this is helpful for engineered flooring on the concrete; the adjustable mounting cup allows for post pour upwards adjustment of up to 1½ inches.

Recessed and Furniture Feed Activation is available with all 4 Inch Recessed Floorboxes by selecting the correct adjustable mounting cup for the application.



Recessed Activation



Non-Metallic Adjustable 4 inch Floor Box



Finish with cover **S1R4FFCVR**



Furniture Feed Activation