

Features and Benefits

SystemOne 6 inch Furniture Feed Floor Box, for Raised Access and Wood Floors

The AFBS1R6FF floor box is designed for use in raised access or wood floors. It installs easily into a 6 inch diameter hole and is retained by two pawl arms which swing outwards when tightened by a screw driver. Providing the lowest profile in the industry, the 1/8 inch flange thickness is ADA compliant. The box can also serve as a wiring chamber for power if needed.

Available in six architectural finishes, Hubbell SystemOne Floor Boxes harmonize aesthetics with function and safety.

- UL listed, scrubwater compliant
- Plenum rated box assembly
- Factory configurable with CONNEXION modular plug-n-play system



Pre-Wired Assemblies

- AFBS1R6 series boxes are available from our factory as pre-wired assemblies with CONNEXION modular plug-n-play system
- Contact Hubbell Territory Manager for details

6 inch Recessed Floor Boxes

Description	Catalog Number
Floor Box with Temporary Installation Cover	AFBS1R6BASE
Floor Box (AFBS1R6BASE) with Brushed Aluminum Finish Cover (AFBS1R6FFCVRALU)	AFBS1R6FFALU
Floor Box (AFBS1R6BASE) with Black Powder Coat Finish (AFBS1R6FFCVRBLK)	AFBS1R6FFBLK
Floor Box (AFBS1R6BASE) with Brushed Brass Plated Finish Cover (AFBS1R6FFCVRBRS)	AFBS1R6FFBRS
Floor Box (AFBS1R6BASE) with Antique Bronze Plated Finish Cover (AFBS1R6FFCVRBRZ)	AFBS1R6FFBRZ
Floor Box (AFBS1R6BASE) with Gray Powder Coat Finish Cover (AFBS1R6FFCVRGRY)	AFBS1R6FFGRY
Floor Box (AFBS1R6BASE) with Plated Satin Nickel Finish Cover (AFBS1R6FFCVRNKL)	AFBS1R6FFNKL

Note: UL File Number E31999.

6 Inch Round Covers

- Flange Diameter 7.5 inches
- Flange thickness is 1/8 inches thick and complies with ADA requirements
- Cover load rating is 1,000 lbs, for a static load applied through a 3 inch dia. mandrel with 2x safety factor*

Finish	Catalog Number
Brushed Aluminum	AFBS1R6FFCVRALU
Black Powder Coat	AFBS1R6FFCVRBLK
Brass Plated	AFBS1R6FFCVRBRS
Antique Bronze Plated	AFBS1R6FFCVRBRZ
Gray Powder Coat	AFBS1R6FFCVRGRY
Satin Nickel Plated	AFBS1R6FFCVRNKL

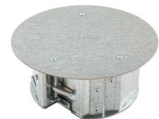
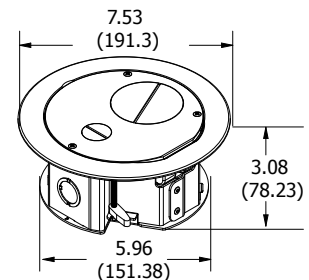
Note: *Load applied through a 3 in. (76mm) mandrel in center of the cover.

Replacement Parts

Description	Catalog Number
Low Voltage Divider	AFBS1R6DIV
Low Voltage Grommet	AFBS1R6GROM
Low Voltage Gate	AFBS1R6GATE

Installation

Hole Diameter	6 inch
Bottom low Voltage Knock out	2 inch
Side low voltage entry	Removable gate, area equal to 2 inch conduit
Bottom Power Knock out	¾" ½" concentric
Side Power knock out	¾" ½" concentric
Fastening	2 pawl arms



AFBS1R6BASE



AFBS1R6FFBLK



AFBS1R6FFCVRBRS



AFBS1R6DIV



AFBS1R6GROM



AFBS1R6GATE

Dimensions in Inches (mm)