

Brushed Aluminum Pedestal FRPT 3 Inch Core Hole Two-Piece Units, for Use In Concrete Floors

Through-Floor Fitting

Description
Large Capacity Multi-Service Pedestal Through-Floor Fitting with (1) 1 1/4 in. EMT stem for low voltage and (1) 1/2 in. EMT stem for power applications.

Catalog Number

PT7XC



Specifications:

- 1 – 4 hour fire rating (1 – 3 hour for steel floor units and concrete topping, D900 Series Design).
- For 2 1/4 in. to 7 in. floor thickness.
- Approved for use in the City of Chicago.

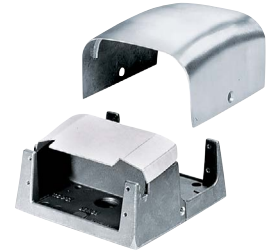
Pedestal Service Fitting

Description
2-Gang Pedestal Service Fitting
For use with PT7XC only.

Color/Material
Brushed Aluminum

Catalog Number

FR80AL



Specifications:

- Brushed aluminum housing with low voltage barrier. Plates and devices sold separately.

Note: See pages P-45 and P-46 for technical information.

Plates

| Description | Catalog Number | Description | Catalog Number |
|---------------------------------|----------------|----------------------------------------------------------------------------------------------------------------------------------------------------------------|-----------------|
| Duplex | SS309D | Furniture feed (3/4 in. KO) | SS309SF* |
| Style Line®/GFCl | SS309DS | Furniture feed, blank | SS309BF* |
| Single receptacle (1.39 in. OD) | SS309S | Bushed data opening (1 in. ID) | SS309T |
| Blank | SS309B | <ul style="list-style-type: none"> • 302/304 stainless steel plates (SS309SF and SS309BF are aluminum). • UL Listed and CSA Certified. | |

Note: *For furniture feed applications using **SS309SF**, a blank **SS309BF** must be used for second plate.

3 Inch Core Hole FRPT Accessories

| Description | Color | Catalog Number | Description | Color/Gang | Catalog Number |
|------------------------------------------------------------------------------------------------------------------------------------------------------------------------------------------------------------------------------------------------------------------------------------------|---------------|-----------------------------|----------------------------------------------------------------------------------------------------------------------------------------------------------------------------------|----------------------------------------|--------------------------------|
| Flush FRPT Abandonment Plate Use with PT7FSD, PT73SD or PT71SD only. Covers the opening when FRPT is abandoned. Service fitting is removed and through-floor fitting remains. | Gray Ivory | AP2GY AP2I | PT7XC Extension Kit Extends PT7XC FRPT to accommodate between 7 in. and 13 in. floor thickness. | — | EXT13 |
| Multi-Service Furniture Feed Replacement Inserts Use as a replacement cover for PT73FFSD series, or to convert installed PT7FSD series into furniture feed FRPTs. Includes (2) 1/2 in. threaded hubs for low voltage and (1) 3/4 in. threaded hub for power. (UL Listed only.) | Gray Ivory | FF3GY FF3I | Pedestal FRPT Abandonment Plate Use with PT27A or PT7XC only. Covers the opening when FRPT is abandoned. Service fitting is removed and through-floor fitting remains. | Gray/ 2-gang Gray/ 4-gang | AP22 AP42 |
| Replacement Low Voltage Barrier Use with FR280, FR480, and FR680 pedestal service fittings only when additional power/low voltage separation is required. | | FRBR1 | | | |