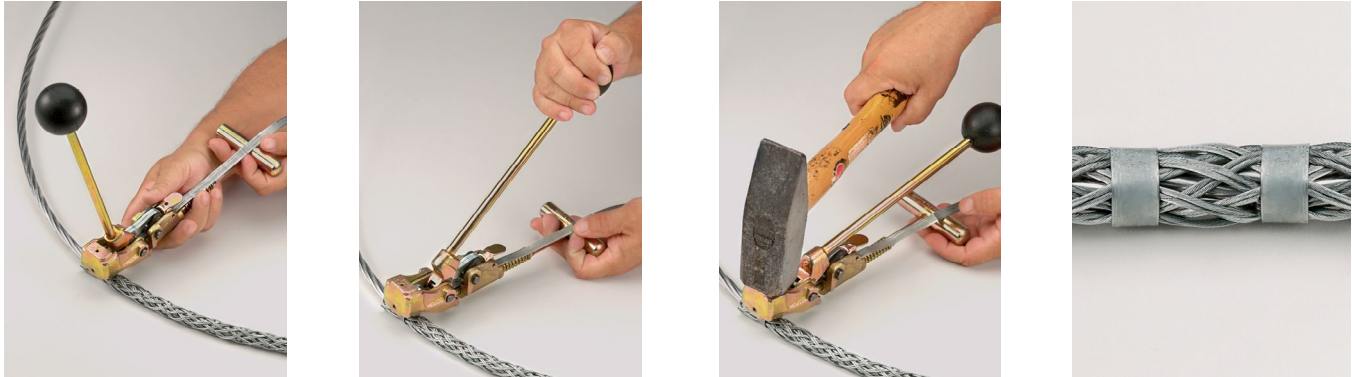


Punch-Lok® Bands

Punch-Lok Bands are applied over the tail of a grip to prevent the mesh from being tripped or pulled loose. Also, they assure full gripping action by locking the mesh of the tail in tight contact with the cable or rope.



When the tail of a grip is the leading end, the bands are particularly important to prevent accidental release caused by tripping on obstructions. A conductor-to-conductor (double-socking) pulling operation is a good example: where two grips connect two conductors to form a temporary splice. In all cases two Punch-Lok® Bands should be double wrapped approximately one inch to two inches (2.54cm to 5.08cm) from the grip's tail. Banding is required to ensure maximum reliability and guard against accidental release. It is also common practice to tape over the banded tail area to assure smooth passage through the sheaves. The conductor should be installed in the grip up to the elbows of the aluminum shoulders in order to assure full and complete gripping action as illustrated above.



Punch-Lok® Bands

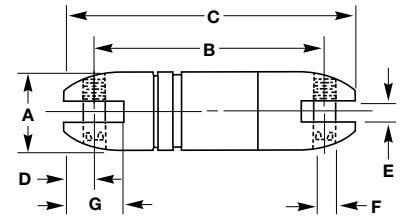
Grip Banding Range Inches (cm)	Band Width Inches (cm)	Band Inside Diameter Inches (cm)	Model	Catalog Number
.25"-1.13" (.63-2.86)	.38" (.95)	1.38" (3.49)	0-311	20320050
1.13"-1.63" (2.86-4.13)	.38" (.95)	2.00" (5.08)	0-316	20320051
1.63"-2.25" (4.13-5.71)	.63" (1.59)	2.50" (6.35)	0-10	20320052
2.25"-3.50" (5.71-8.89)	.63" (1.59)	4.00" (10.16)	0-16	20320053
3.50"-5.00" (8.89-12.70)	.63" (1.59)	6.00" (15.24)	0-24	20320054

Accessories

Punch-Lok Tools	Catalog Number
P-1000 for use with .63" width Banding tool.	20320048
P-38 for use with .38" and .63" width Banding tool for tight spaces.	20320047

Stainless Steel Swivels

Swivels are essential to the efficiency and safety of any high tension application. They are particularly important where continuous pulls develop higher and higher torque levels. Torque is intensified by the pull-resistance of the cable itself and the resistance of the high tension controlling equipment regulating line sag. Ball bearing swivels release torque and prevent it from reaching dangerous levels that can damage the cable and obstruct the lines.



Stainless Steel Swivels



Maximum Safe Working Load Lbs. (N)	Dimensions in Inches (cm)							Model	Catalog Number
	A	B	C	D	E	F	G		
2,250 (10,000)	.88" (2.22)	2.50" (6.35)	3.38" (8.57)	.44" (1.11)	.38" (0.95)	.31" (0.79)	.97" (2.46)	A-13L	20308001A
5,000 (22,240)	1.25" (3.17)	3.69" (9.37)	4.75" (12.06)	1.22" (1.35)	1.22" (1.35)	.41" (1.03)	1.28" (3.25)	BB-13L	20308002A
9,000 (40,030)	1.50" (3.81)	4.25" (10.79)	5.63" (14.29)	.69" (1.75)	1.28" (1.51)	.50" (1.27)	1.56" (3.97)	B-13L	20308003A
10,000 (44,480)	1.63" (4.13)	4.50" (11.43)	6.00" (15.24)	.75" (1.90)	.69" (1.75)	.63" (1.59)	1.72" (4.36)	C-13L	20308004A
30,000 (133,440)	2.38" (6.03)	7.63" (19.37)	10.00" (25.40)	1.19" (3.02)	1.03" (2.62)	.88" (2.22)	2.78" (7.06)	D-13L	20308005A

Punch-Lok® is a registered trademark of Punch-Lok Inc.