

Grand Slam Junction boxes

Large capacity home run boxes

Terminate home runs in commercial applications with the Grand Slam box. It offers both flexibility and space. Features built-in STAB-IT® connectors for jobsite labor savings as well as included ground bar.

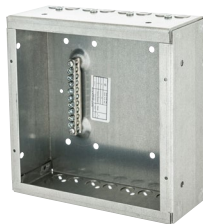
- With STAB-IT® clamps, has been tested at over 3X faster than traditional connectors
- Surface mount cover and ground bar included
- Two raised grounds for installation flexibility
- Available with concentric knockouts on side and back UL Listed



Grand Slam Junction Boxes

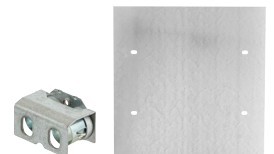
Box, surface covers and ground bar included.

| Dimensions | Concentric Knock Outs | STAB-IT Clamps | Capacity (In. ³) | Catalog Number |
|----------------|---|-------------------------------------|------------------------------|--------------------------|
| 8" X 8" X 3" | (12) ½" & ¾" (5) ¾" & 1" | (4) 14/2 to 10/3 Up to 8 Cables | 179 | HBLSC080803STRC |
| 8" X 8" X 3" | NA | (4) 14/2 to 10/3 Up to 8 Cables | 179 | HBLSC080803NKSTRC |
| 12" X 12" X 4" | (12) ½" & ¾" (9) ¾" & 1" (8) 1" & 1¼" | (6) 14/2 to 10/3 Up to 12 Cables | 546 | HBLSC121204STRC |
| 12" X 12" X 4" | NA | (6) 14/2 to 10/3 Up to 12 Cables | 546 | HBLSC121204NKSTRC |



Grand Slam Junction Box Accessories

| Description | For Use With | Dimensions | Catalog Number |
|---------------------------------------|----------------------------------|-------------------------|--|
| Flush Style Cover | 8" X 8" Boxes 12" X 12" Boxes | 10" x 10" 14" x 14" | HBLSCF0808RC HBLSCF1212RC |
| STAB-IT® Connector (accepts 2 cables) | All Grand Slam boxes | 1.032" x 1.75" x 0.983" | HBL989ST |



Dimensions in Inches (mm)